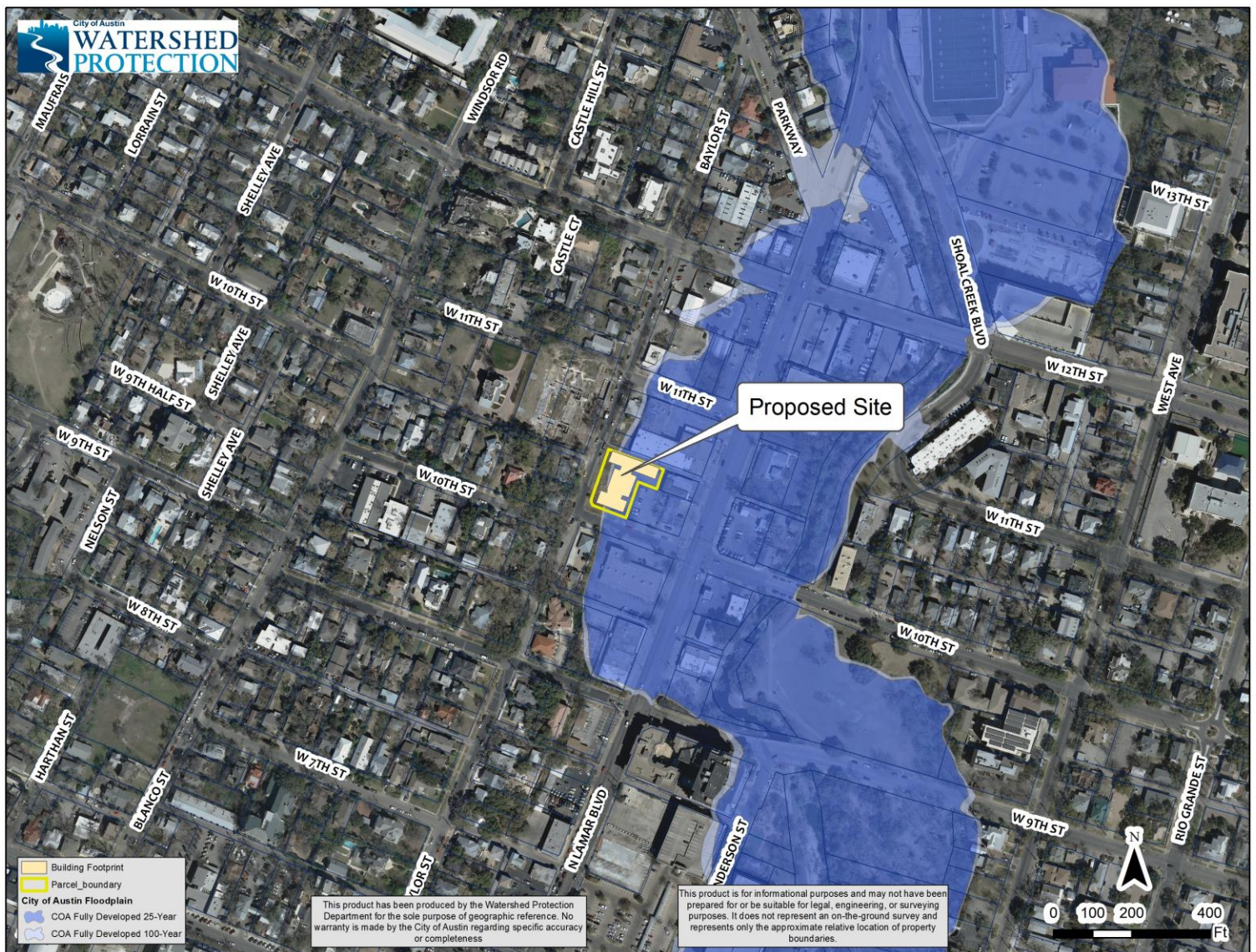


Backup Information Packet

Concerning a public hearing to consider an ordinance authorizing floodplain variances to construct the 1010 W. 10th Condos and related site work, which encroaches in the 25-year and the 100-year floodplains of Shoal Creek.

Site Location Map with Current Floodplains for 1010 W. 10th Condos



Zoomed in Site Location Map for 1010 W. 10th Condos

