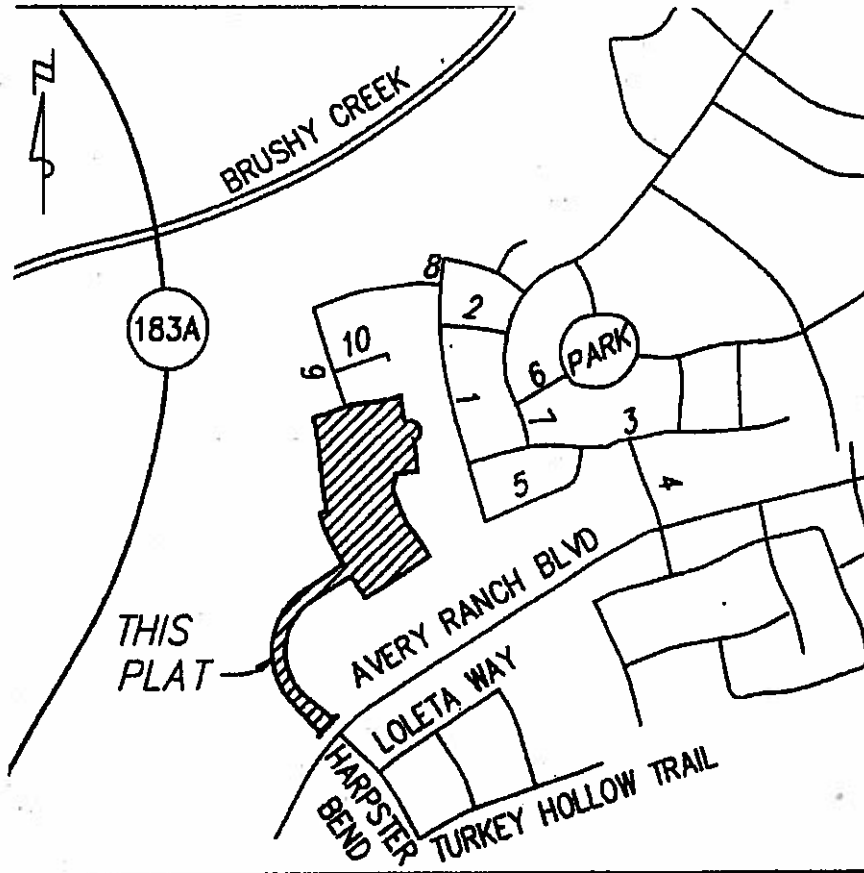


C13
2



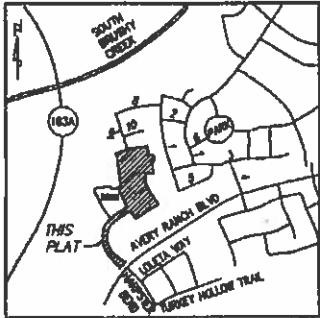
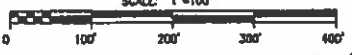
LOCATION MAP
SCALE: 1"=1000'

PLAT OF
AVERY RANCH FAR WEST PHASE THREE SECTION SIX
 SCALE: 1"=100'

C13/3

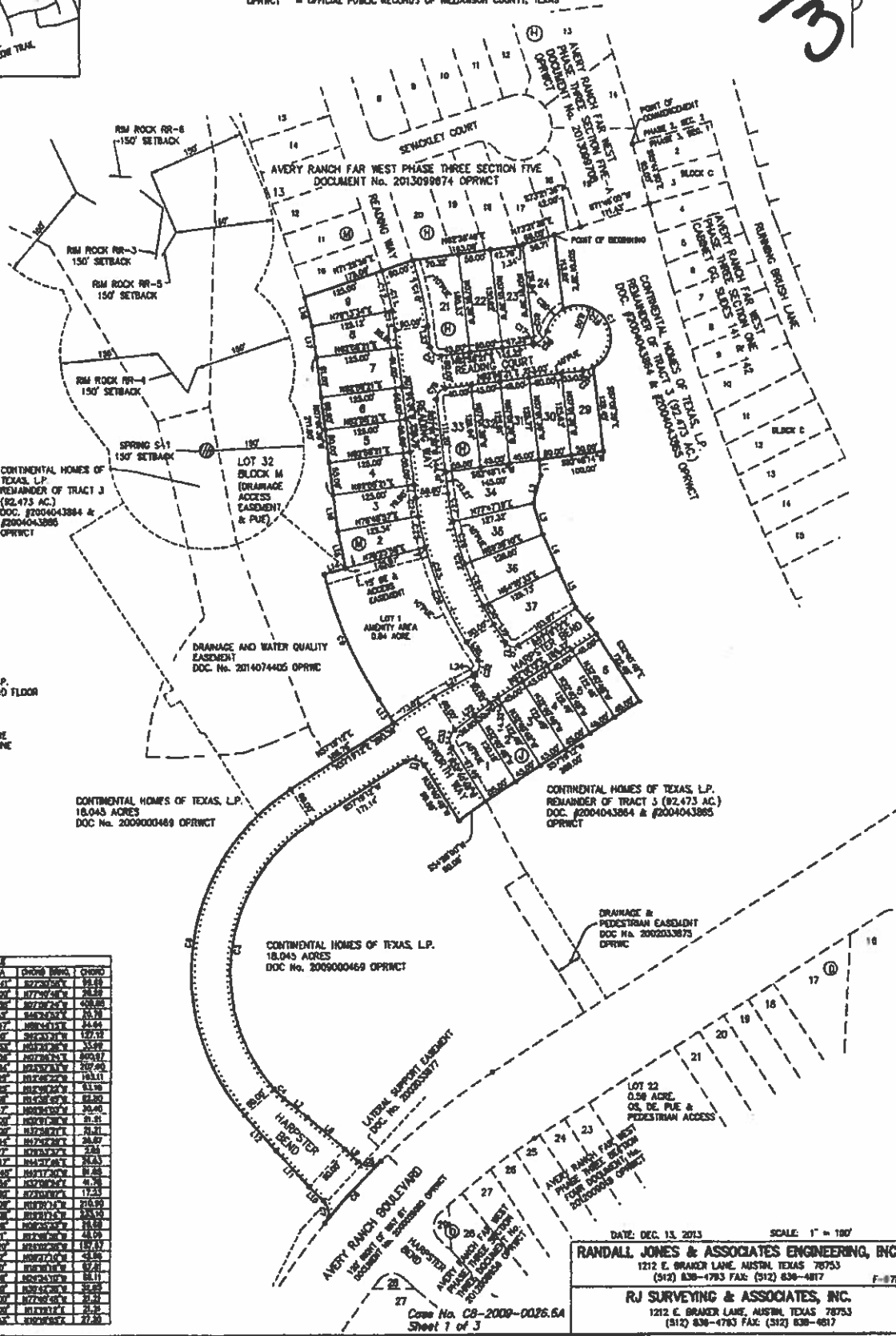
- 1 RUNNING BRUSH LANE
- 2 CHESOP TRAIL
- 3 ROUNDTREE RANCH LANE
- 4 NEARABOUT RD
- 5 BOQUILLAS CANYON DRIVE
- 6 HOMESTEAD MILLAGE TRAIL
- 7 STAKED PLAINS DRIVE
- 8 SANTA ELENA LANE
- 9 WEAINGO WAY
- 10 SEWICKLEY COURT

- LEGEND:
- = FOUND 1/2" IRON ROD
 - = SET 1/2" IRON ROD WITH RJ SURVEYING CAP
 - DC = DRAINAGE EASEMENT
 - OS = OPEN SPACE
 - PUE = PUBLIC UTILITY EASEMENT
 - ⊙ = BLOCK NAME
 - ⋯ = SIDEWALK REQUIRED
 - OPRWCT = OFFICIAL PUBLIC RECORDS OF WILLIAMSON COUNTY, TEXAS



LOCATION MAP
 SCALE 1"=1000'

LINE	LENGTH	BEARING
L1	23.77	S87°22'30"E
L2	44.88	S16°27'30"W
L3	48.88	S71°20'00"W
L4	49.24	S23°28'00"E
L5	49.24	S23°28'00"E
L6	49.24	S23°28'00"E
L7	49.24	S23°28'00"E
L8	49.24	S23°28'00"E
L9	49.24	S23°28'00"E
L10	49.24	S23°28'00"E
L11	49.24	S23°28'00"E
L12	49.24	S23°28'00"E
L13	49.24	S23°28'00"E
L14	49.24	S23°28'00"E
L15	49.24	S23°28'00"E
L16	49.24	S23°28'00"E
L17	49.24	S23°28'00"E
L18	49.24	S23°28'00"E
L19	49.24	S23°28'00"E
L20	49.24	S23°28'00"E
L21	49.24	S23°28'00"E
L22	49.24	S23°28'00"E
L23	49.24	S23°28'00"E
L24	49.24	S23°28'00"E



SITE DATA:
 27 SINGLE FAMILY LOTS
 1 AMENITY AREA LOT
 TOTAL AREA: 8,007 ACRES

PROPERTY OWNER:
 CONTINENTAL HOMES OF TEXAS, L.P.
 12554 RIATA VISTA CIRCLE, SECOND FLOOR
 AUSTIN, TEXAS 78727
 (512) 343-4883

BEARINGS ARE TEXAS STATE PLANE
 COORDINATE SYSTEM, CENTRAL ZONE

CONTINENTAL HOMES OF TEXAS, L.P.
 18,045 ACRES
 DOC No. 2009000469 OPRWCT

CONTINENTAL HOMES OF TEXAS, L.P.
 REMAINDER OF TRACT J (92.473 AC.)
 DOC. #2004043864 & #2004043865
 OPRWCT

CHORD	LENGTH	BEARING	CHORD BEARING	CHORD	CHORD BEARING
C1	196.21	S81.00	S81°17'41"	197.28	S81.00
C2	31.44	S81.00	S81°17'41"	177.28	S81.00
C3	468.48	S74.00	S73°58'00"	177.28	S81.00
C4	28.79	N76.74	N76°54'00"	177.28	S81.00
C5	34.38	S83.88	S83°52'00"	177.28	S81.00
C6	127.79	S89.00	S88°59'00"	177.28	S81.00
C7	57.27	S83.00	S82°52'00"	177.28	S81.00
C8	68.24	S83.00	S82°52'00"	177.28	S81.00
C9	108.42	S83.00	S82°52'00"	177.28	S81.00
C10	102.08	S83.00	S82°52'00"	177.28	S81.00
C11	81.28	S83.00	S82°52'00"	177.28	S81.00
C12	61.28	S83.00	S82°52'00"	177.28	S81.00
C13	41.28	S83.00	S82°52'00"	177.28	S81.00
C14	21.28	S83.00	S82°52'00"	177.28	S81.00
C15	1.28	S83.00	S82°52'00"	177.28	S81.00
C16	1.28	S83.00	S82°52'00"	177.28	S81.00
C17	1.28	S83.00	S82°52'00"	177.28	S81.00
C18	1.28	S83.00	S82°52'00"	177.28	S81.00
C19	1.28	S83.00	S82°52'00"	177.28	S81.00
C20	1.28	S83.00	S82°52'00"	177.28	S81.00
C21	1.28	S83.00	S82°52'00"	177.28	S81.00
C22	1.28	S83.00	S82°52'00"	177.28	S81.00
C23	1.28	S83.00	S82°52'00"	177.28	S81.00
C24	1.28	S83.00	S82°52'00"	177.28	S81.00
C25	1.28	S83.00	S82°52'00"	177.28	S81.00
C26	1.28	S83.00	S82°52'00"	177.28	S81.00
C27	1.28	S83.00	S82°52'00"	177.28	S81.00
C28	1.28	S83.00	S82°52'00"	177.28	S81.00
C29	1.28	S83.00	S82°52'00"	177.28	S81.00
C30	1.28	S83.00	S82°52'00"	177.28	S81.00
C31	1.28	S83.00	S82°52'00"	177.28	S81.00
C32	1.28	S83.00	S82°52'00"	177.28	S81.00
C33	1.28	S83.00	S82°52'00"	177.28	S81.00
C34	1.28	S83.00	S82°52'00"	177.28	S81.00
C35	1.28	S83.00	S82°52'00"	177.28	S81.00
C36	1.28	S83.00	S82°52'00"	177.28	S81.00
C37	1.28	S83.00	S82°52'00"	177.28	S81.00
C38	1.28	S83.00	S82°52'00"	177.28	S81.00
C39	1.28	S83.00	S82°52'00"	177.28	S81.00
C40	1.28	S83.00	S82°52'00"	177.28	S81.00
C41	1.28	S83.00	S82°52'00"	177.28	S81.00
C42	1.28	S83.00	S82°52'00"	177.28	S81.00
C43	1.28	S83.00	S82°52'00"	177.28	S81.00

DATE: DEC. 13, 2013 SCALE: 1" = 100'
RANDALL JONES & ASSOCIATES ENGINEERING, INC.
 1212 E. BRAKER LANE, AUSTIN, TEXAS 78753
 (512) 838-4793 FAX: (512) 838-4817 F-8784
RJ SURVEYING & ASSOCIATES, INC.
 1212 E. BRAKER LANE, AUSTIN, TEXAS 78753
 (512) 838-4793 FAX: (512) 838-4817