

All responsibility for the adequacy of these Plans rests with the engineer who prepared them. In approving these Plans, the City of Austin must rely upon the adequacy of the work of the design engineer.

Existing Shoreline Length = 50.64'  
 Allowable Dock Width = 20% of 50.64' = 10.13'  
 Proposed Dock Width = 14.0' = 27.69%  
 Proposed Dock Depth = 30'

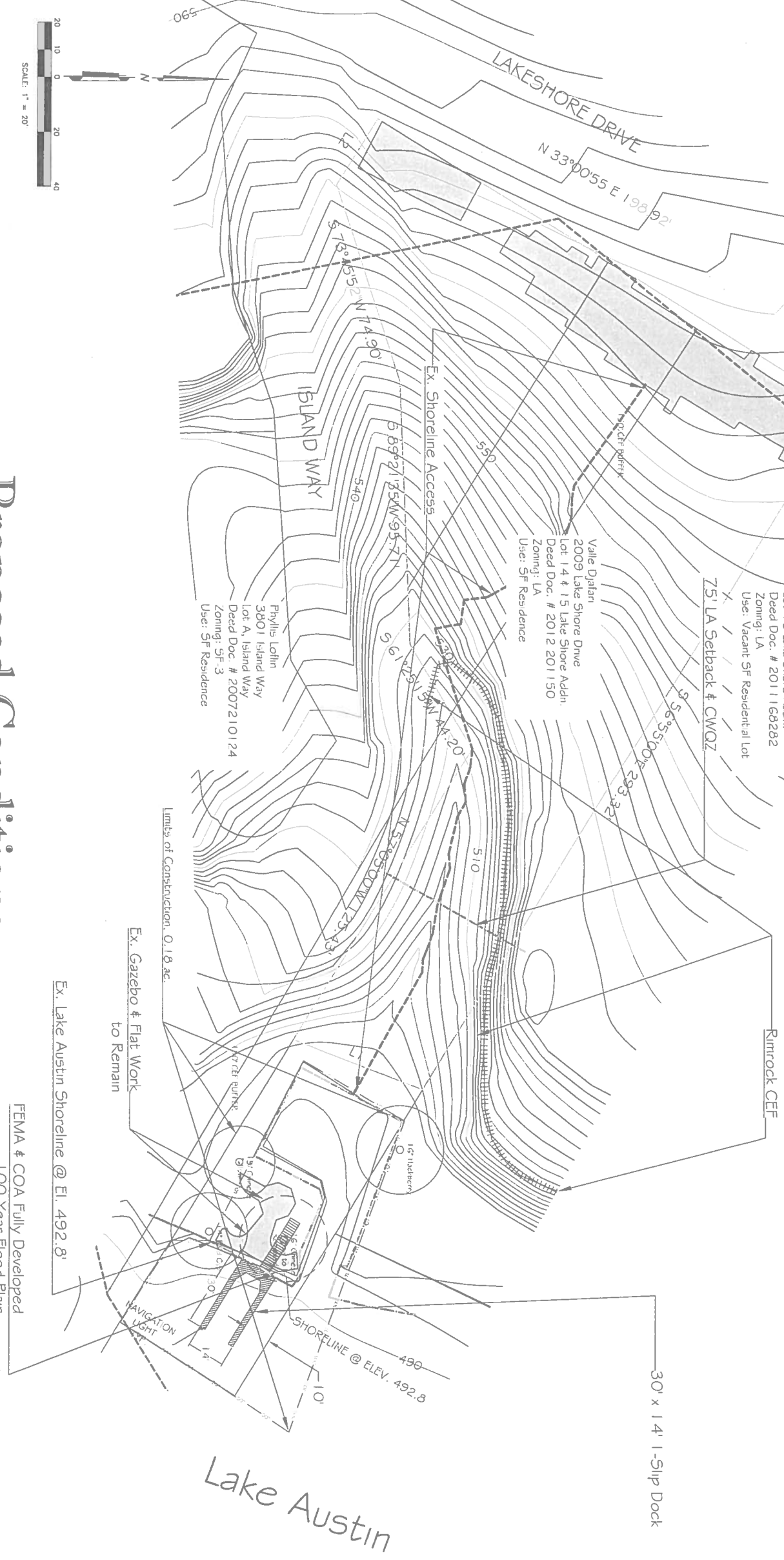
Source of Topography: City of Austin GIS

**DATE**

11/13/11	11/13/11	11/13/11	11/13/11
11/13/11	11/13/11	11/13/11	11/13/11
11/13/11	11/13/11	11/13/11	11/13/11
11/13/11	11/13/11	11/13/11	11/13/11

# 2009 Lake Shore Drive

## Proposed Conditions



**LINE TABLE**

L 1	5 21° 51' 48" W	50.64'
L 2	13 22° 14' 34" W	30.79'
	N 58° 55' 00" W	20.50'
	17 54° 33' W	28.33'

*Handwritten signature/initials*

