

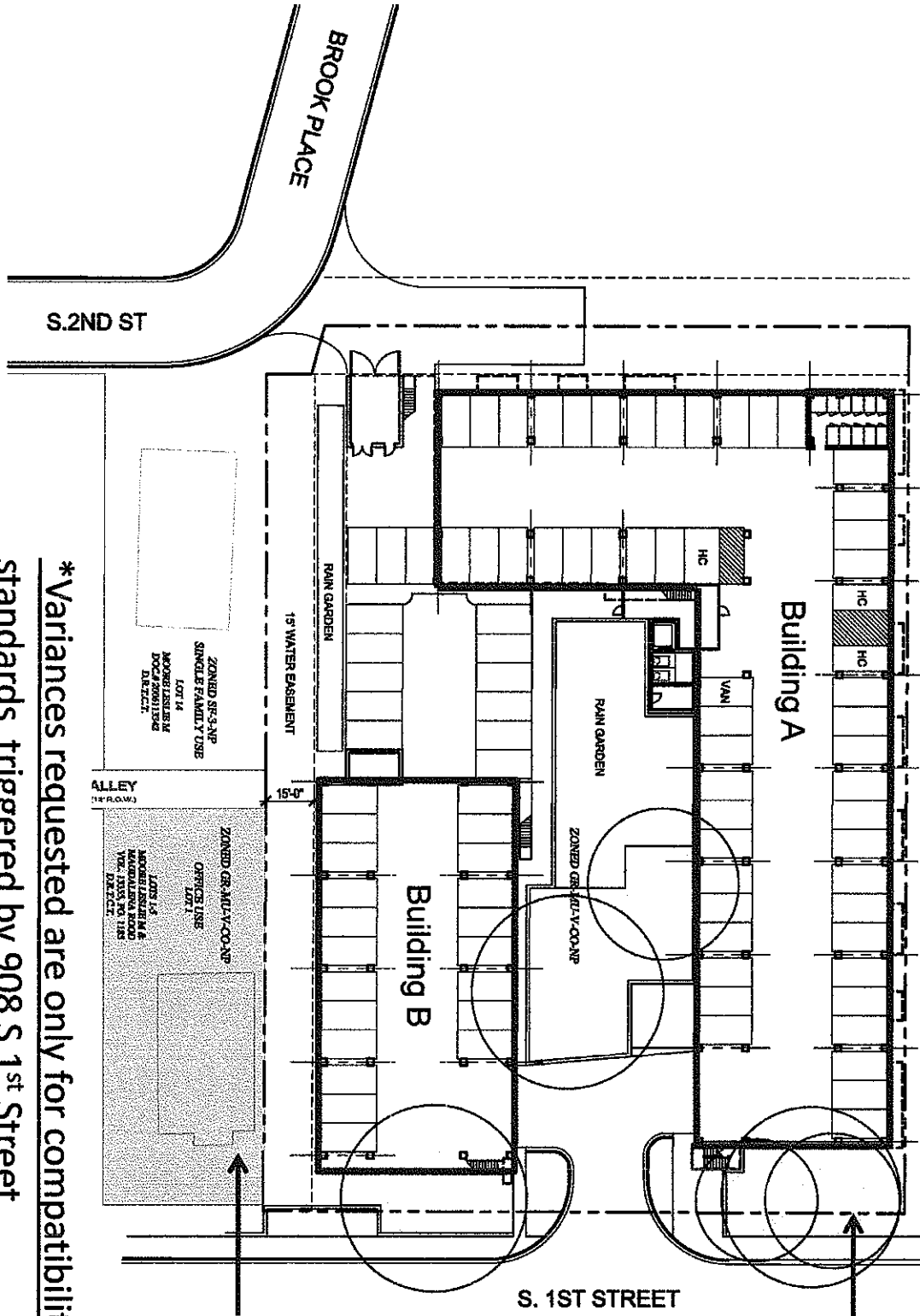
§ 25-1-21 DEFINITIONS.

Unless a different definition is expressly provided, in this title:

(123) USE means the conduct of an activity, or the performance of a function, on a site or in a structure.

ARTICLE 2. DEFINITIONS; MEASUREMENTS.

05-2014-0093



PSW PROJECT
 900 S 1ST ST.
 - Zoned GR-MU
 (allows for 0' interior side yard setback)

908 S 1ST ST.
 - Zoned GR-MU
 - SPELLBOUND STUDIO (tattoo shop)

*Variances requested are only for compatibility standards triggered by 908 S 1st Street

PROPOSED SITE PLAN WITH ADJACENT PROPERTY



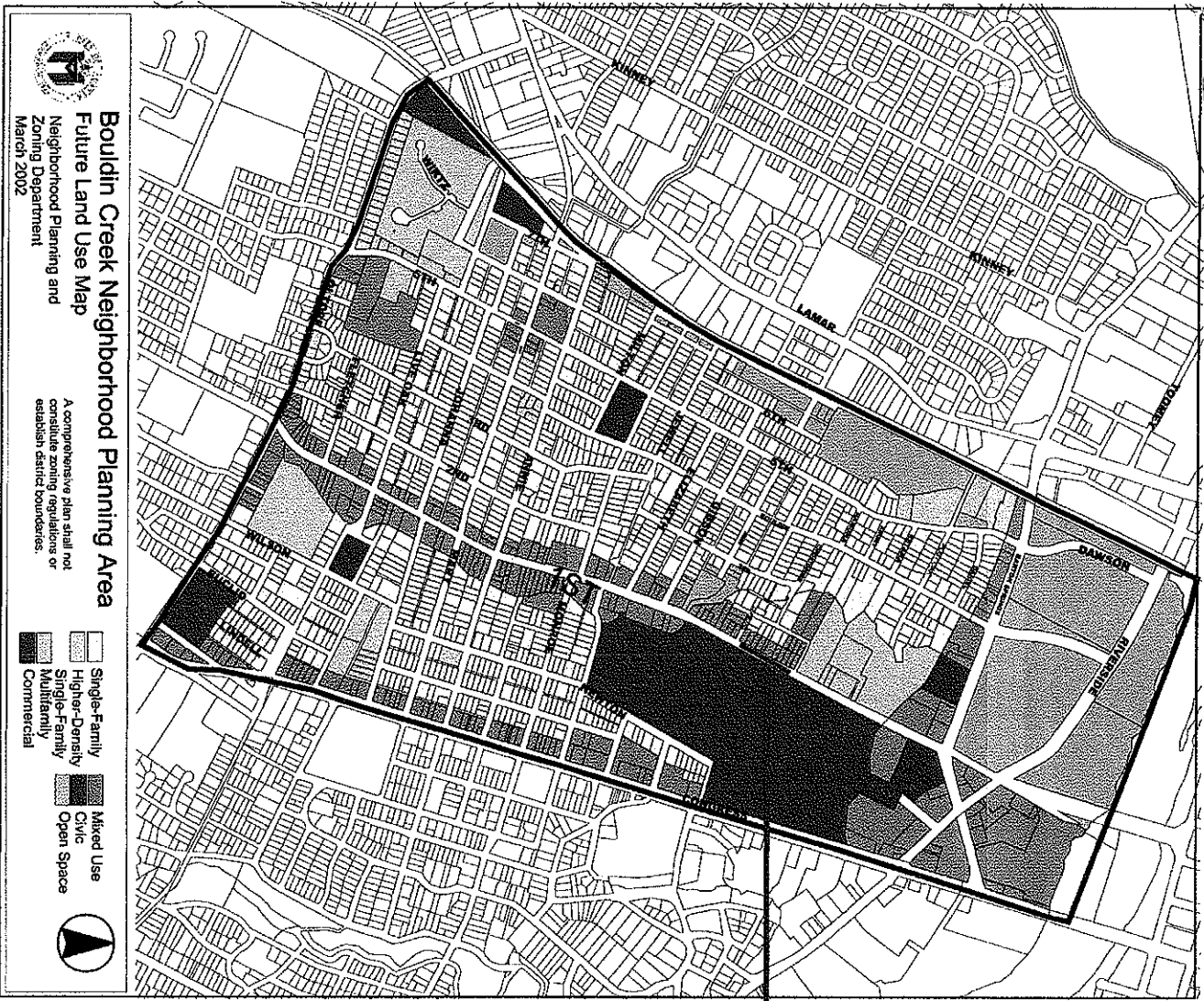
Bouldin Creek Neighborhood Plan

(Part 1, Objective 1.2, Action Item 8)

B) New structures on Tract 25 (Lots 1-8, Abe Williams Subdivision) should be permitted a height of 45 feet, a minimum setback of 10 feet, and the 30% community open space condition on these properties should be waived. Lead Implementer: NPZD

Mixed Use between
900 S. 1st St. and
Copeland St.

* Entire 1st Street corridor
calls for more intensive
use than single family res.



BCNA Neighborhood Plan
 908 S. 1st St. Labeled Office Use