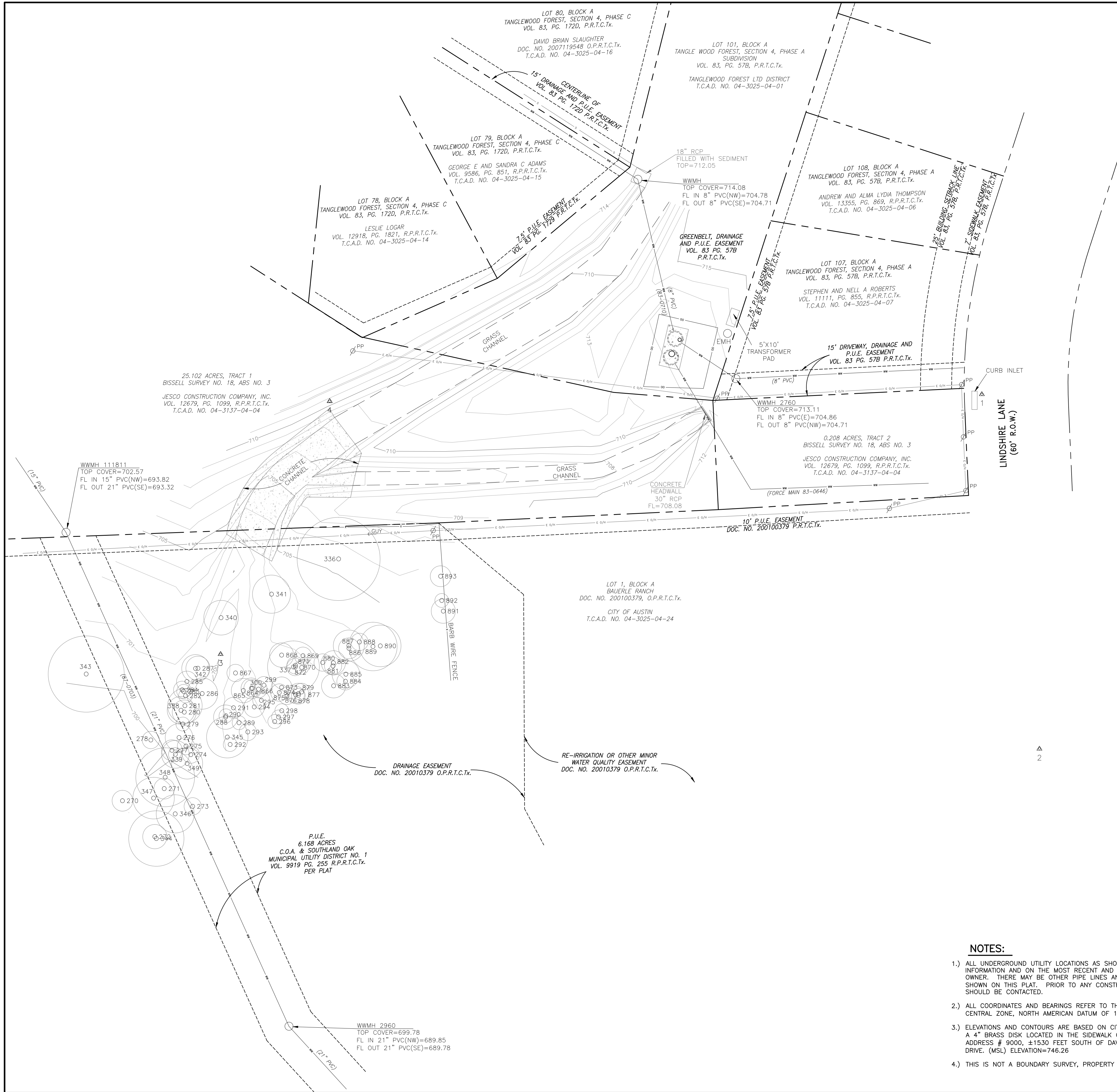
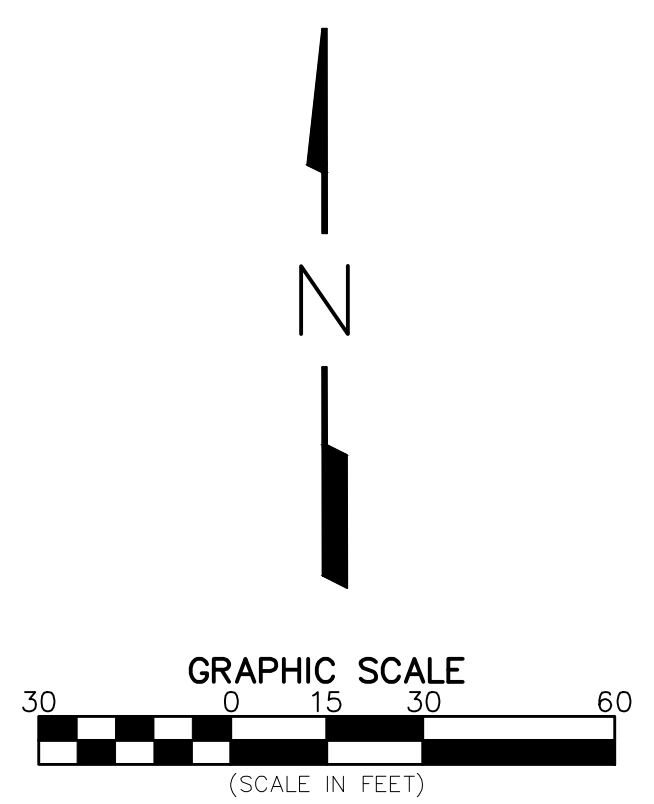


H:\City of Austin - Public Works Dept (06141)\2011 Small Diameter Pipeline Relocation List\06141.046.001 Lift Station Abandonment\9.00-003.dwg brown Plotted: June 28, 2013 - 3:25pm Layout: Layout1



TREE LIST

TAG NO.	SIZE/TYPER
270	6" CEDAR ELM
271	6" ASH
272	7" HACKBERRY
273	5" HACKBERRY
274	5" ASH
275	5" ASH
276	8" ASH DOUBLE-TRUNK (6",3")
277	6" ASH
278	5" MESQUITE DOUBLE-TRUNK (4",2")
279	4" ASH
280	7" ASH DOUBLE-TRUNK (5",4")
281	10" ASH DOUBLE-TRUNK (7",6")
282	4" ASH
283	4" AM ELM
284	5" ASH
285	6" ASH
286	9" ASH DOUBLE-TRUNK (6",5")
287	7" ASH
288	7" CEDAR ELM
289	4" CEDAR ELM
290	4" CEDAR ELM
291	6" CEDAR ELM
292	4" CEDAR ELM
293	5" CEDAR ELM
294	6" CEDAR ELM
295	5" CEDAR ELM
296	4" CEDAR ELM
297	4" CEDAR ELM
298	4" CEDAR ELM
299	5" CEDAR ELM
300	5" HACKBERRY
336	24" CEDAR ELM
337	15" CEDAR ELM MULTI-TRUNK (9",5",5")
338	8" ASH
339	8" ASH
340	10" ASH
341	11" MESQUITE DOUBLE-TRUNK (8",6")
342	8" ASH
343	22" CEDAR ELM
344	16" CEDAR ELM
345	12" CEDAR ELM DOUBLE-TRUNK (8",8")
346	11" ASH
347	12" ASH
348	17" ASH
349	9" ASH
864	6" CEDAR ELM
865	7" CEDAR ELM DOUBLE-TRUNK (5",3")
866	5" CEDAR ELM
867	5" CEDAR ELM
868	7" CEDAR ELM DOUBLE-TRUNK (5",3")
869	5" CEDAR ELM
870	4" HACKBERRY
871	5" CEDAR ELM
872	5" CEDAR ELM
873	6" CEDAR ELM
874	5" CEDAR ELM
875	5" CEDAR ELM
876	5" CEDAR ELM
877	6" CEDAR ELM
878	4" CEDAR ELM
879	5" CEDAR ELM
880	5" CEDAR ELM
881	5" CEDAR ELM
882	7" CEDAR ELM
883	7" CEDAR ELM
884	5" CEDAR ELM
885	8" CEDAR ELM DOUBLE-TRUNK (6",4")
886	6" CEDAR ELM DOUBLE-TRUNK (4",3")
887	9" HACKBERRY DOUBLE-TRUNK (6",6")
888	5" CEDAR ELM
889	14" MESQUITE MULTI-TRUNK (7",7",6")
890	12" PERSIMMON MULTI-TRUNK (4",4",4",4",4")
891	7" HACKBERRY
892	4" HACKBERRY
893	6" HACKBERRY



LEGEND

- ⊙ 1/2" IRON ROD WITH PLASTIC CAP FOUND
- 1/2" IRON ROD FOUND
- ⊙ 1" IRON PIPE FOUND
- WWMH WASTEWATER MANHOLE
- WW — WASTEWATER LINE
- X — WIRE FENCE
- S — STORM DRAIN
- PL — PROPERTY LINE
- EMH ELECTRIC MANHOLE
- E O/H — ELECTRIC LINE (OVERHEAD)
- ⊕ POWER POLE
- ← GUY WIRE
- R.O.W. RIGHT-OF-WAY
- VOL. PG. VOLUME, PAGE
- DOC. NO. DOCUMENT NUMBER
- P.R.T.C.TX. PLAT RECORDS OF TRAVIS COUNTY, TEXAS
- D.R.T.C.TX. DEED RECORDS OF TRAVIS COUNTY, TEXAS
- R.P.R.T.C.TX. REAL PROPERTY RECORDS OF TRAVIS COUNTY, TEXAS
- O.P.R.T.C.TX. OFFICIAL PUBLIC RECORDS OF TRAVIS COUNTY, TEXAS
- () RECORD INFORMATION
- 001 TREE WITH TAG NO.

NOTES:

- ALL UNDERGROUND UTILITY LOCATIONS AS SHOWN ON THIS SURVEY PLAT ARE BASED ON FIELD INFORMATION AND ON THE MOST RECENT AND CURRENT INFORMATION PROVIDED BY THE UTILITY OWNER. THERE MAY BE OTHER PIPE LINES AND INSTALLATIONS IN THE AREA THAT ARE NOT SHOWN ON THIS PLAT. PRIOR TO ANY CONSTRUCTION OR EXCAVATION THE "ONE-CALL" SYSTEM SHOULD BE CONTACTED.
- ALL COORDINATES AND BEARINGS REFER TO THE TEXAS STATE PLANE COORDINATE SYSTEM, CENTRAL ZONE, NORTH AMERICAN DATUM OF 1983/HARN.
- ELEVATIONS AND CONTOURS ARE BASED ON CITY OF AUSTIN BENCHMARK E-15-3001 WHICH IS A 4" BRASS DISK LOCATED IN THE SIDEWALK ON THE WEST SIDE OF MANCHACA ROAD, AT ADDRESS # 9000, ±1530 FEET SOUTH OF DAVIS LANE AND 0.2 MILES NORTH OF SEDGEMORE DRIVE. (MSL) ELEVATION=746.26
- THIS IS NOT A BOUNDARY SURVEY, PROPERTY LINES ARE FOR VISUAL PURPOSES ONLY.

BENCHMARK DESCRIPTIONS:

- #1 - MAG NAIL WITH WASHER SET IN ASPHALT ON THE WEST SIDE OF LINDSHIRE LANE, NEXT TO THE CURB INLET AT ADDRESS #10302 LINDSHIRE LANE. ELEVATION = 715.39 BENCHMARK
- #2 - MAG NAIL WITH WASHER SET IN ASPHALT ON THE WEST SIDE OF LINDSHIRE LANE. ± 160 FEET NORTH OF THE TRAFFIC CIRCLE AND ± 200 FEET SOUTH OF THE CURB INLET ON LINDSHIRE LANE AT ADDRESS #10302. ELEVATION = 712.46
- AUSTIN BENCHMARK E-15-3001 WHICH IS A 4" BRASS DISK LOCATED IN THE SIDEWALK ON THE WEST SIDE OF MANCHACA ROAD, AT ADDRESS # 9000, ±1530 FEET SOUTH OF DAVIS LANE AND 0.2 MILES NORTH OF SEDGEMORE DRIVE. (MSL) ELEVATION=746.26

SURVEY CONTROL POINTS (NAD83/HARN)(GRID-FEET)

PNT. NO.	NORTHING	EASTING	ELEV.	DESCRIPTION
1	10035703.20	3083956.92	715.39	MAG NAIL W/WASHER
2	10035498.38	3083990.24	712.46	MAG NAIL W/WASHER
3	10035553.05	3083516.95	700.45	60D NAIL
4	10035699.24	3083579.98	710.86	60D NAIL
E-15-3001	10038967.54	3091011.59	746.26	COA BRASS DISK



NO.	DATE	REVISION	BY

CITY OF AUSTIN
LINDSHIRE AND LOCKHEED LIFT STATION RELIEF
CIP # 3168.062
FIDU: XXXX-XXXX-XXXX

CITY OF AUSTIN
SURVEY INFORMATION FOR LINDSHIRE SITE

THIS DOCUMENT IS RELEASED FOR THE PURPOSE OF INTERIM REVIEW UNDER THE AUTHORITY OF
RYKER BROWN, P.E.
(#107176)
JULY, 2013
THIS DOCUMENT IS NOT INTENDED FOR BIDDING, PERMITTING AND/OR CONSTRUCTION PURPOSES

BAR IS ONE INCH ON ORIGINAL DRAWING.

ONE INCH

DESIGNED	RB
DRAWN	
CHECKED	BT
REVIEWED	AH

Seq. 3 of 34

Dwg. No. **G-03**

WON: 06141.046.001