

A vibrant sunset scene with a bridge and silhouettes of people. The sky is a mix of orange, red, and yellow, with a bright sun low on the right. A bridge with many silhouettes of people walking on it spans the middle ground. The water in the foreground is dark with some reflections.

Hispanic/Latino Trends in Austin

Special Called Meeting
Hispanic/Latino Quality of Life Advisory Commission
November 19, 2014

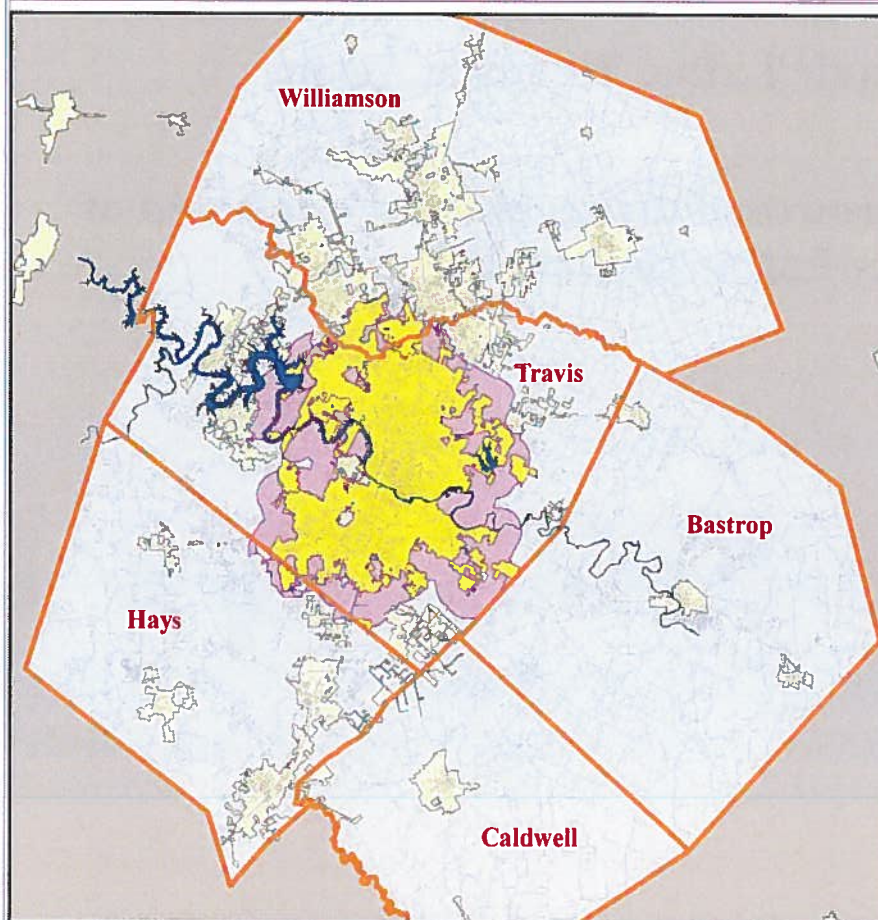
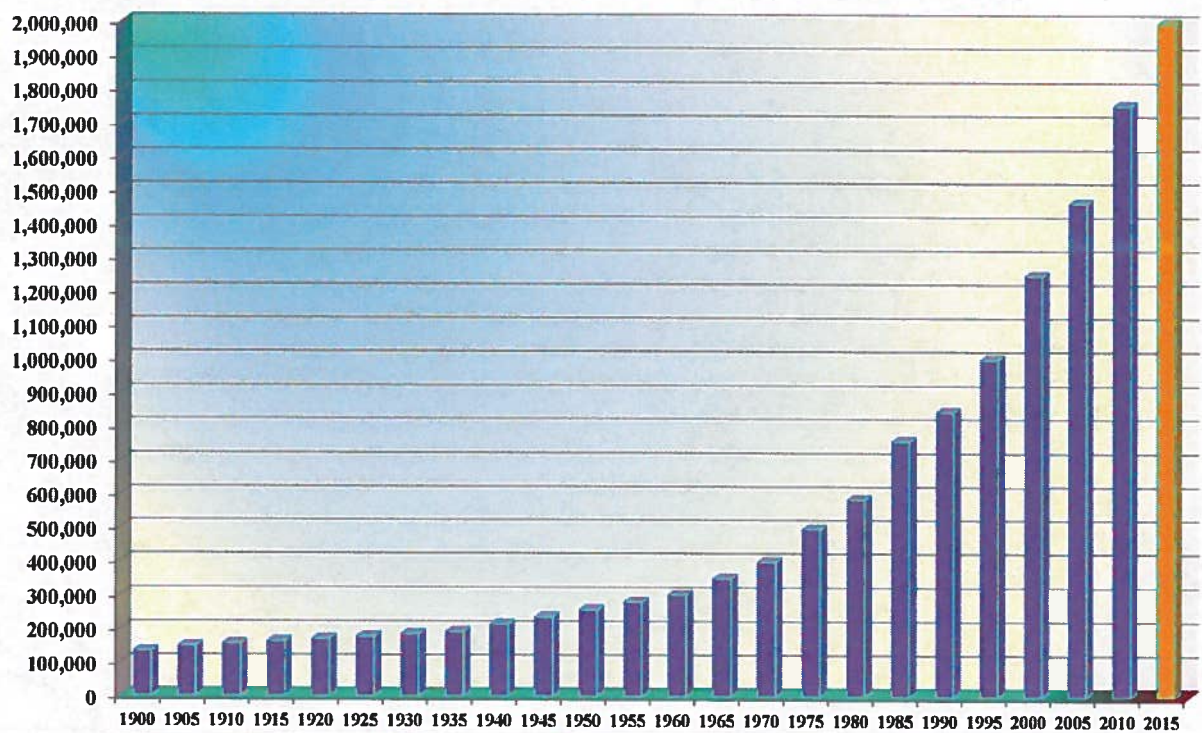
Ryan Robinson
City Demographer
Planning & Development Review Department

A faded background image of a park with people walking and a statue. The scene shows a paved path where several people are walking and one person is riding a bicycle. In the background, there's a statue of a person and some trees.

Hispanic/Latino Trends in Austin

- 1. Enormous growth of the region as a whole and of the Hispanic--Latino community.**

Austin MSA Population History: 1900 to 2015

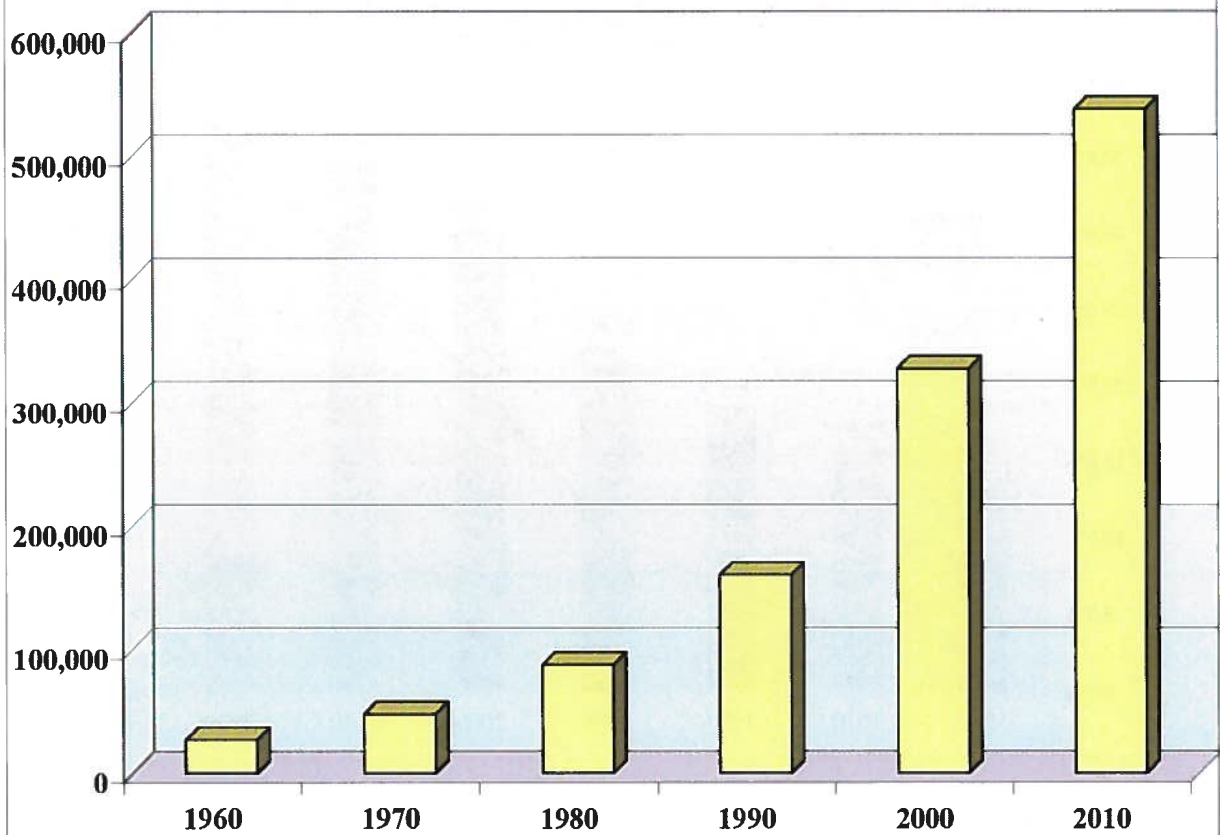


Austin-- Round Rock MSA Metropolitan Statistical Area

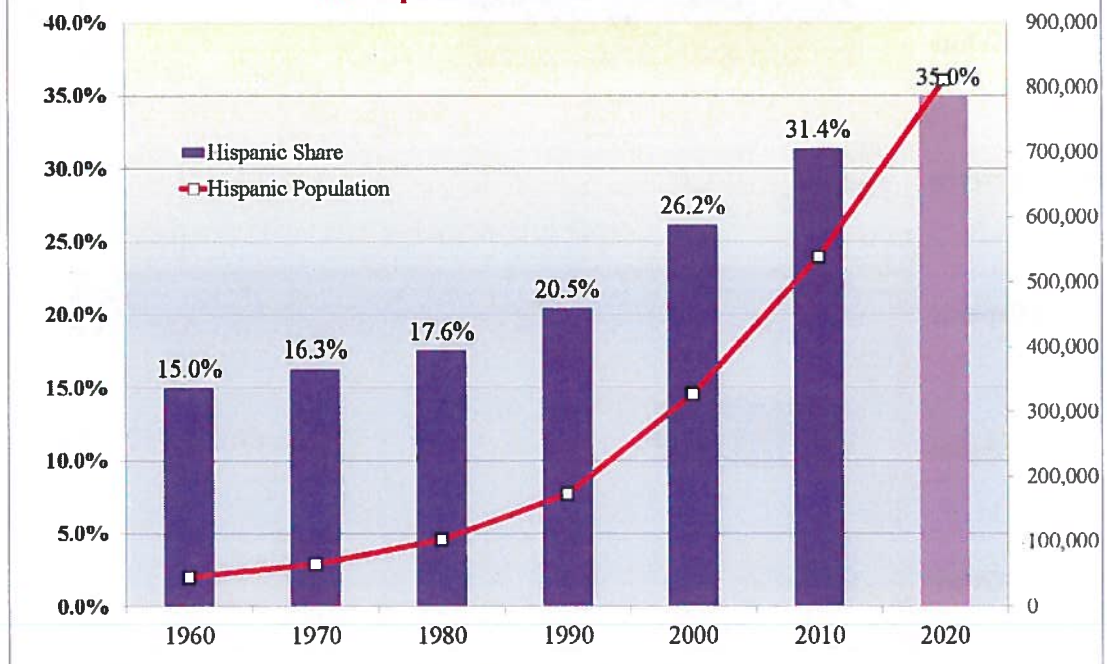
January 2013

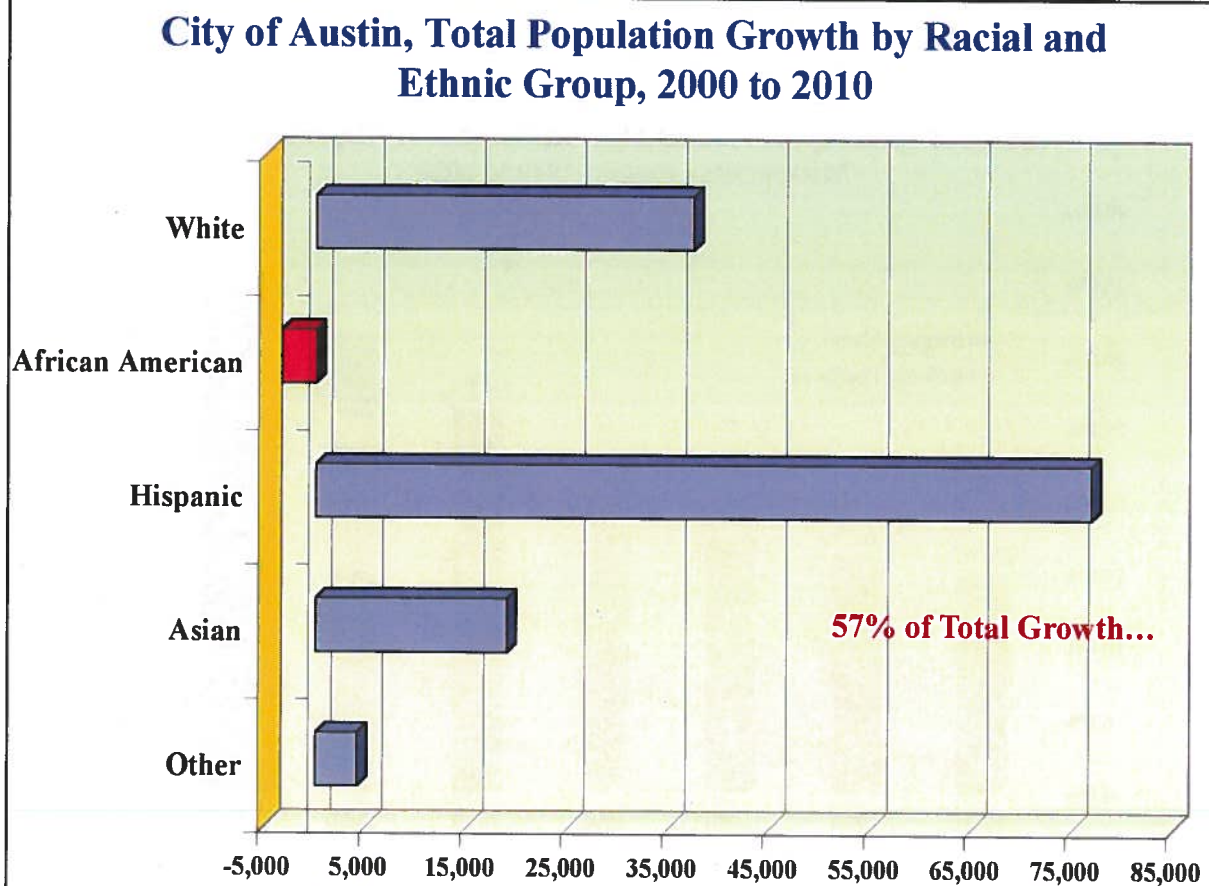
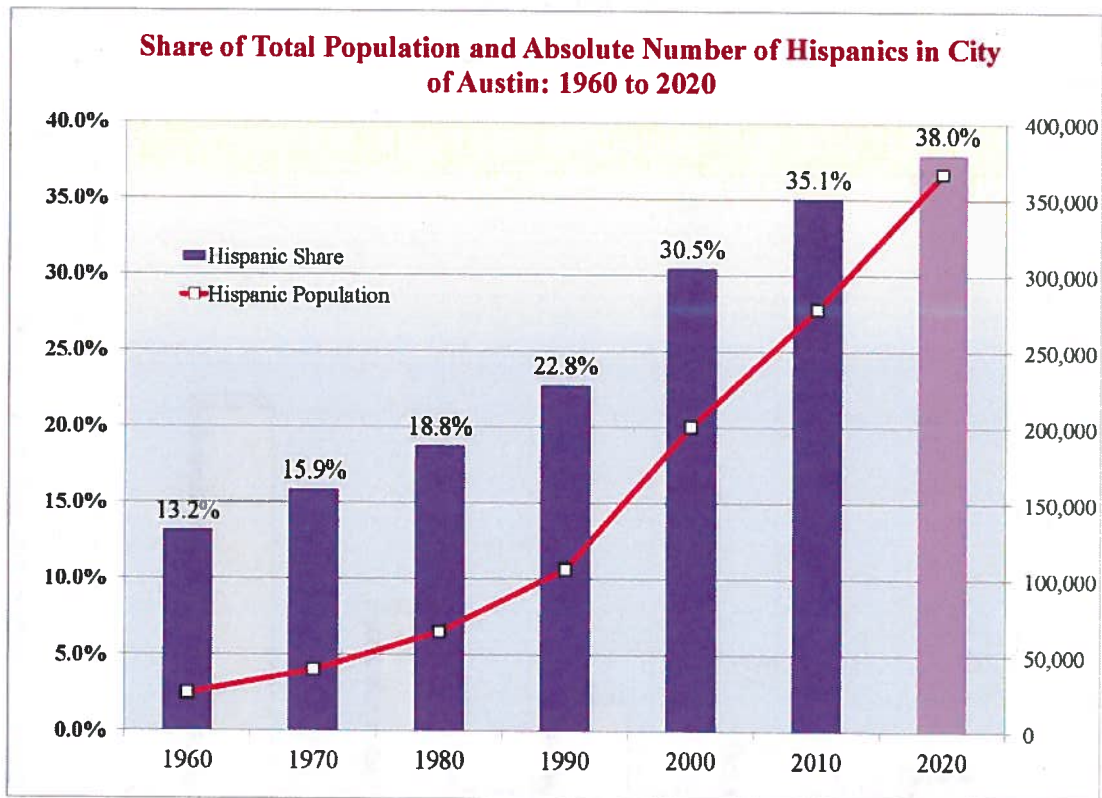
- City of Austin
Full and Limited
Jurisdiction
- City of Austin
Extra-Territorial
Jurisdiction

**Austin MSA Total Hispanic Population Over Time:
1960 to 2010**

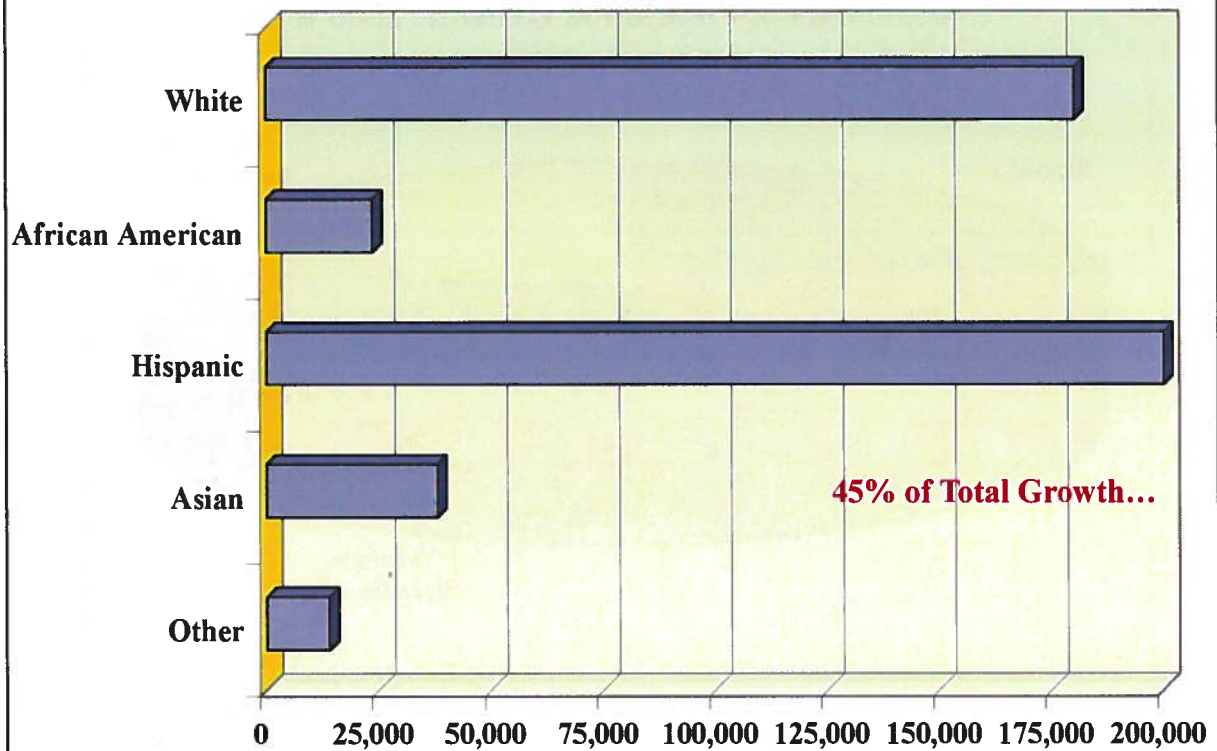


**Share of Total Population and Absolute Number of Hispanics in
Metropolitan Austin: 1960 to 2020**

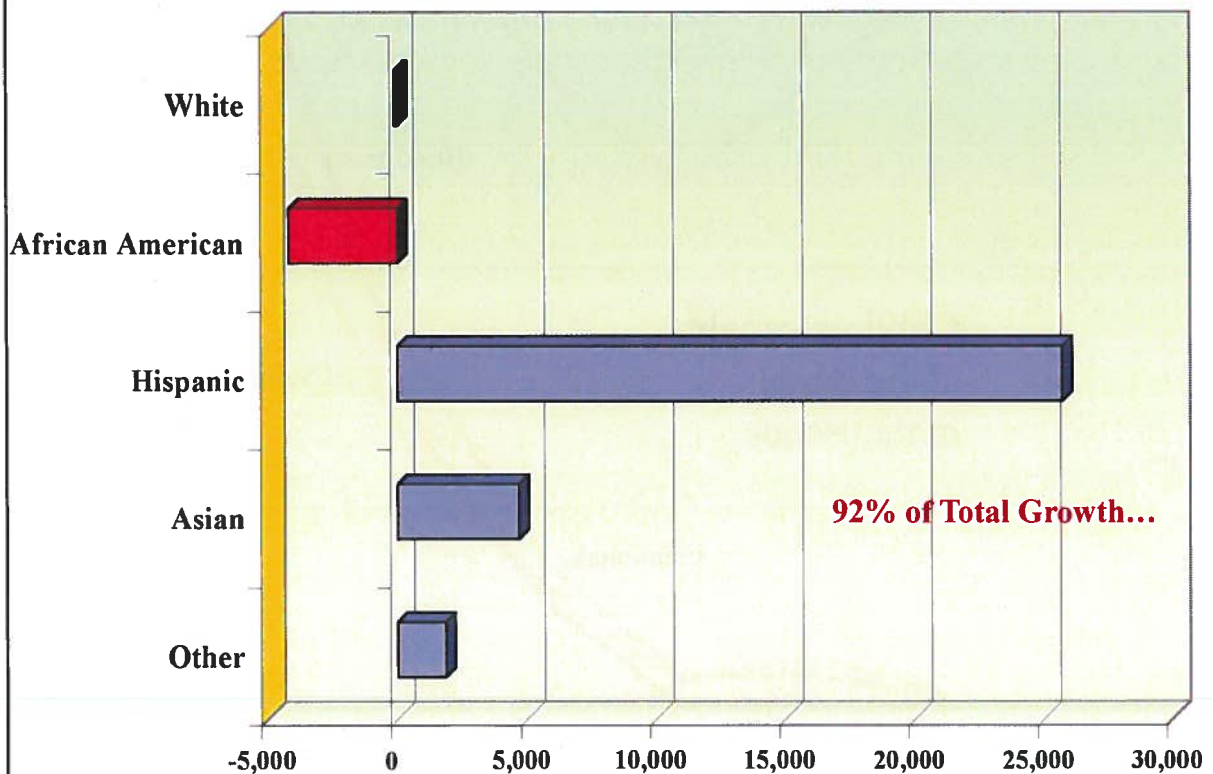




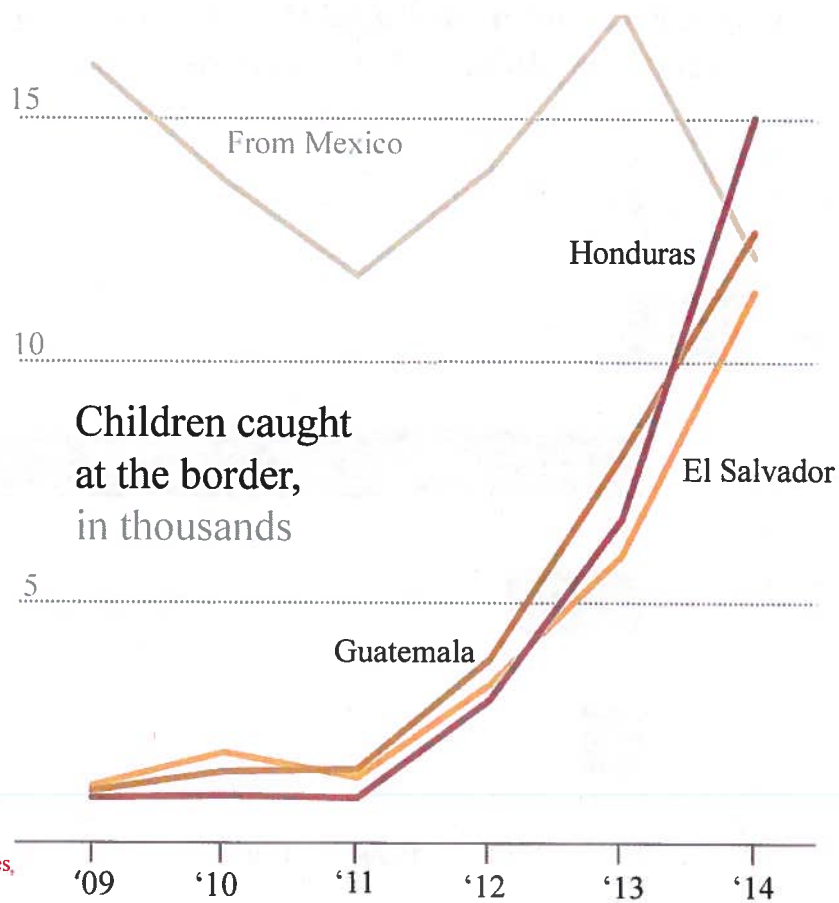
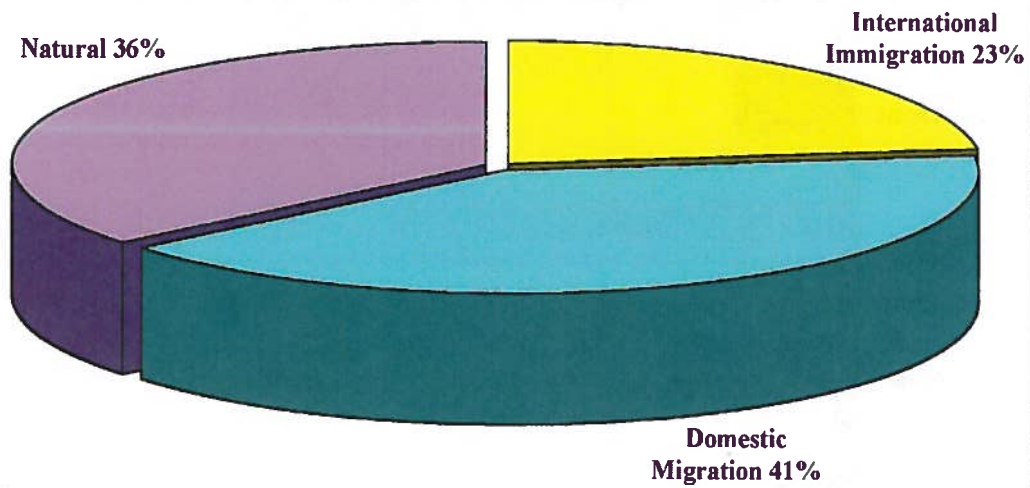
Austin MSA, Total Population Growth by Racial and Ethnic Group, 2000 to 2010



Change in Under 18 Population by Race and Ethnicity, 2000 to 2010, City of Austin

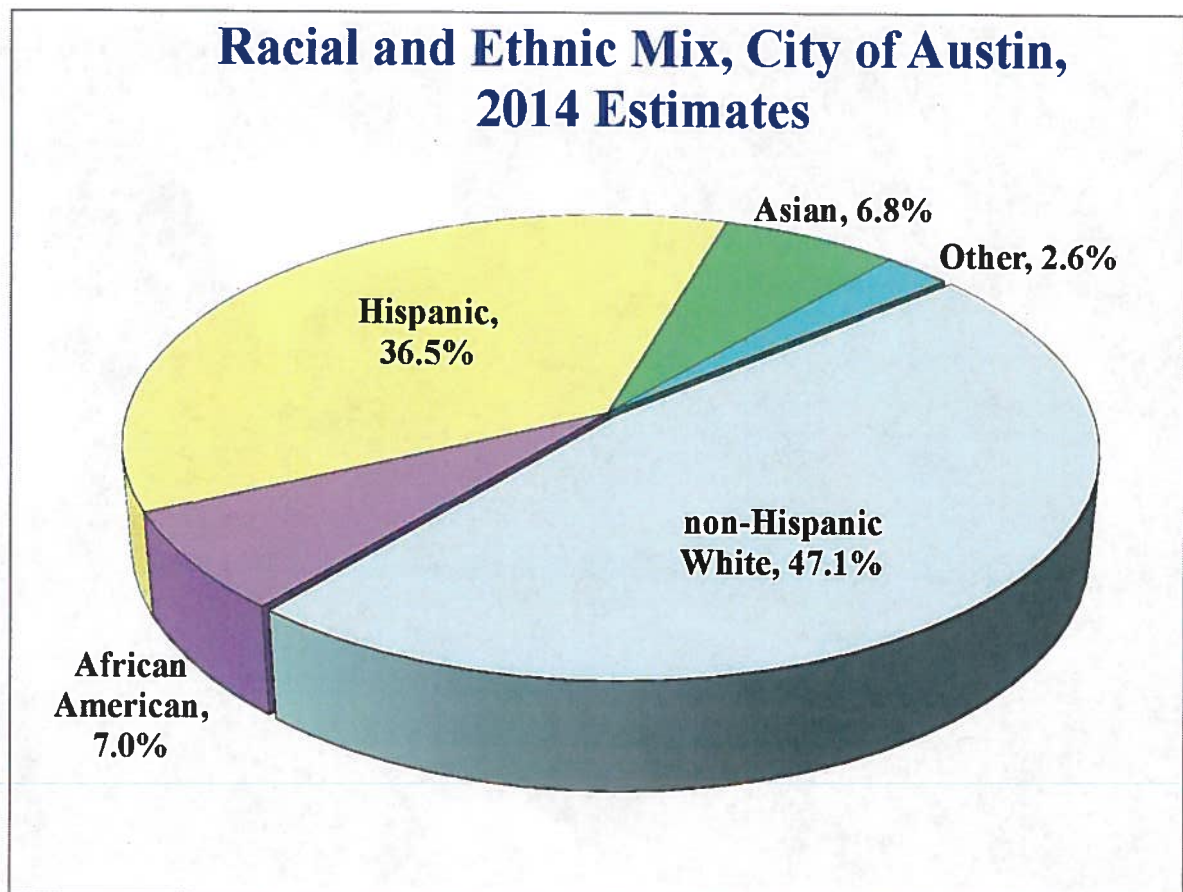
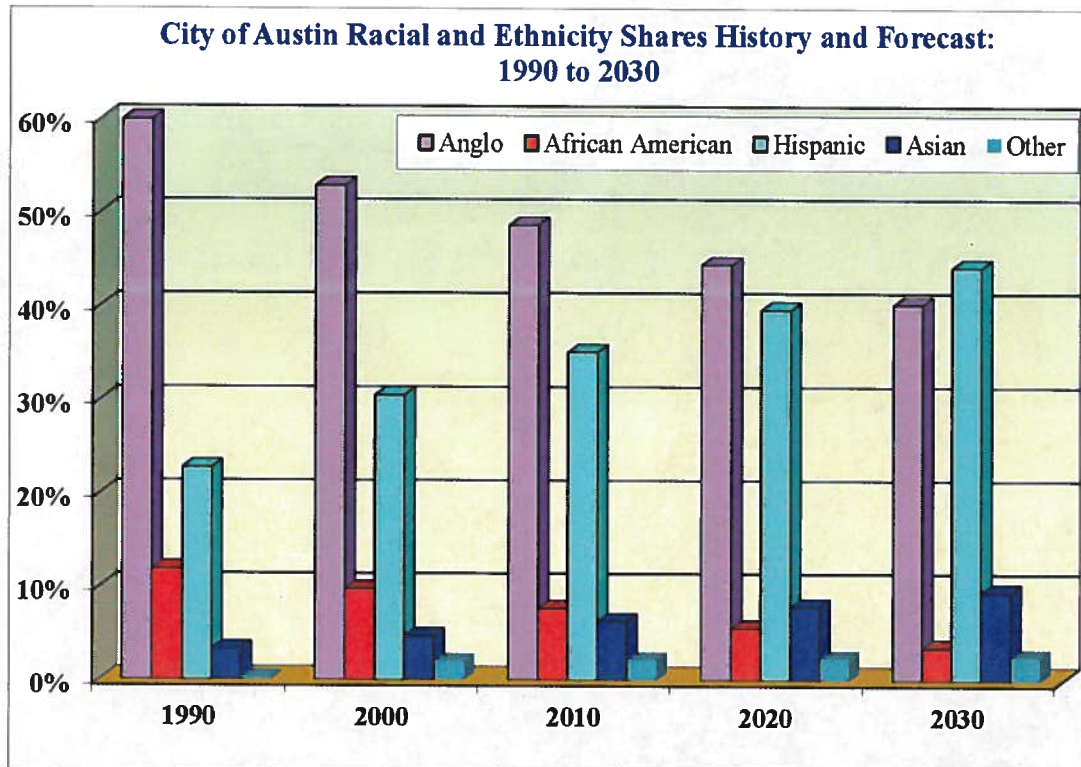


Components of Population Growth: 2000 to 2010, Austin MSA

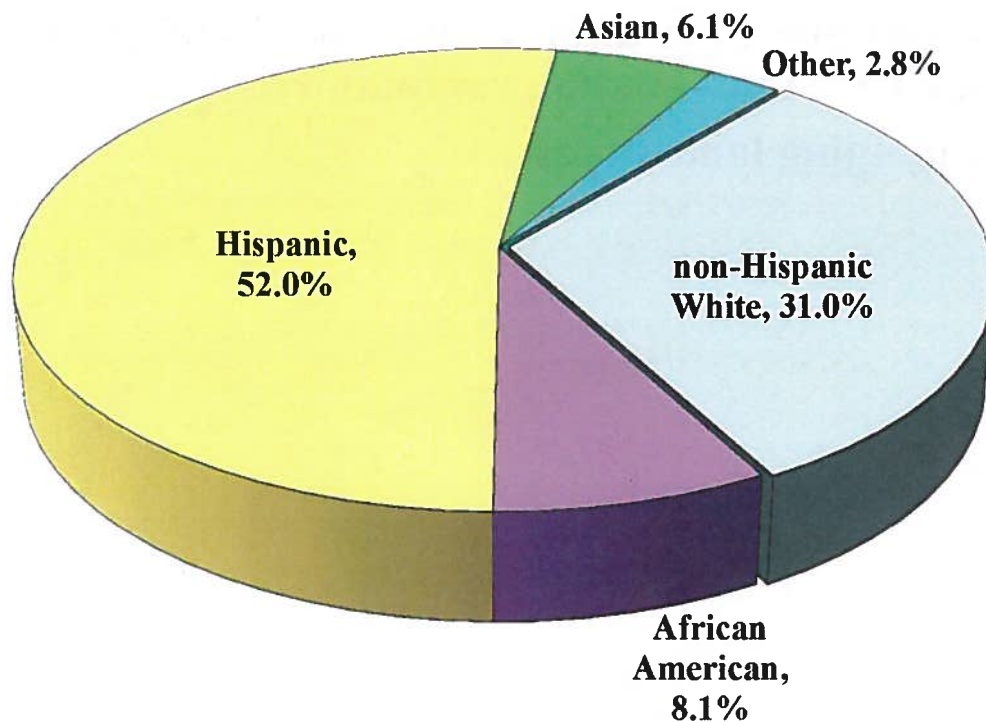


Source: New York Times,
Children at the Border,
July 28, 2014

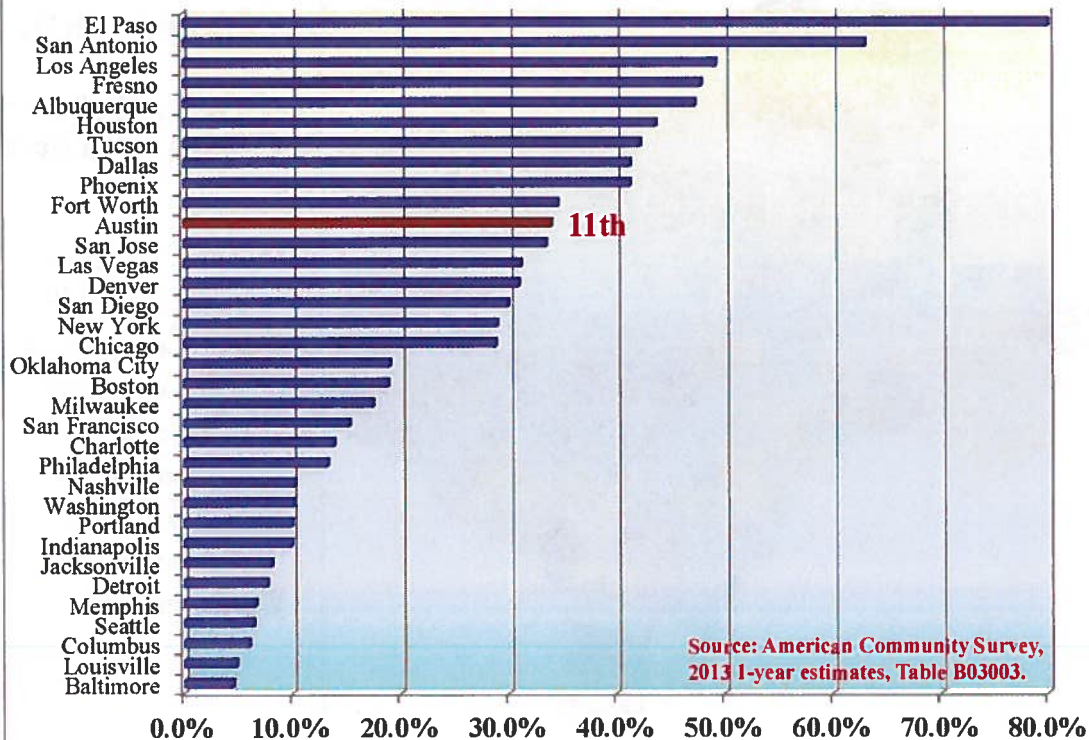




Racial and Ethnic Mix, City of Austin, Under Age 18, 2014 Estimates

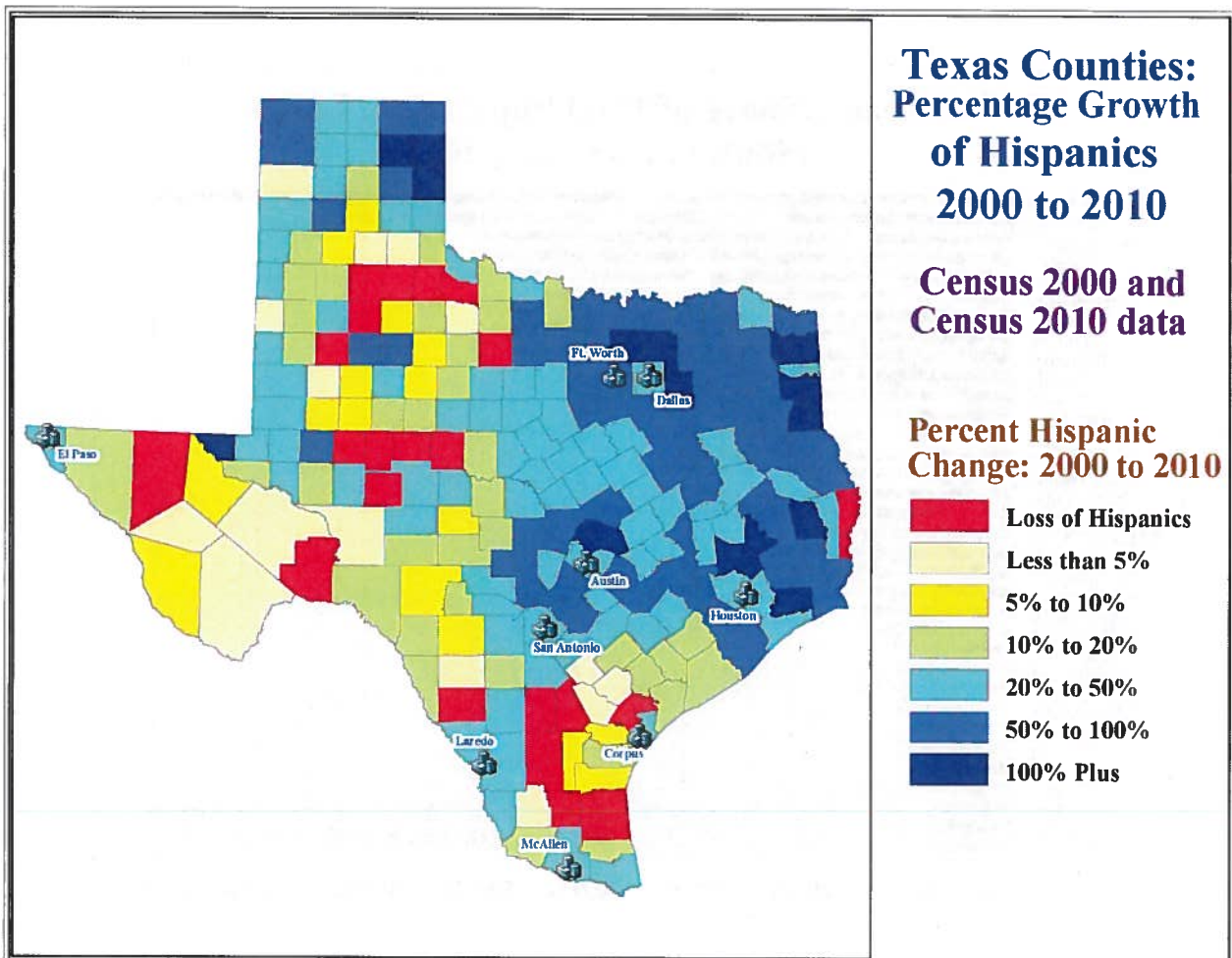


Hispanic Share of Total Population, Large (500K+) US Cities, 2013



Hispanic/Latino Trends in Austin

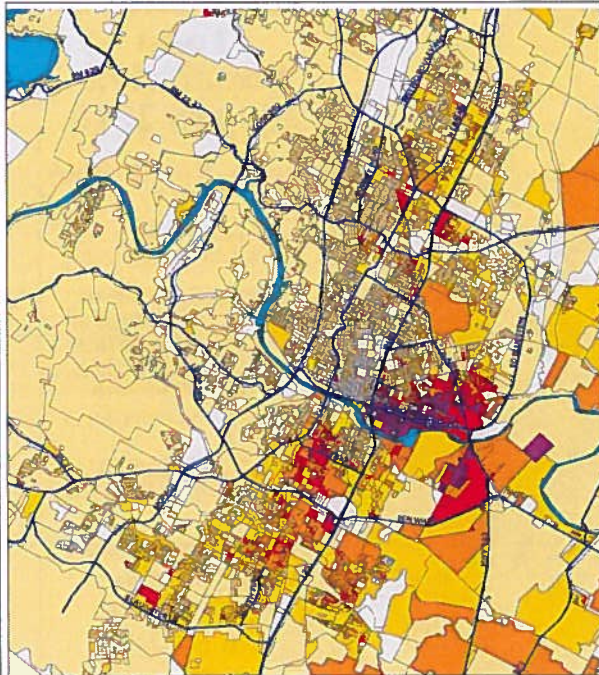
1. Enormous growth of the region as a whole and of the Hispanic—Latino community...
2. Changing landscapes...



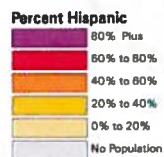
Changing Hispanic Landscape

Hispanic Population Concentrations, 1990 and 2000.

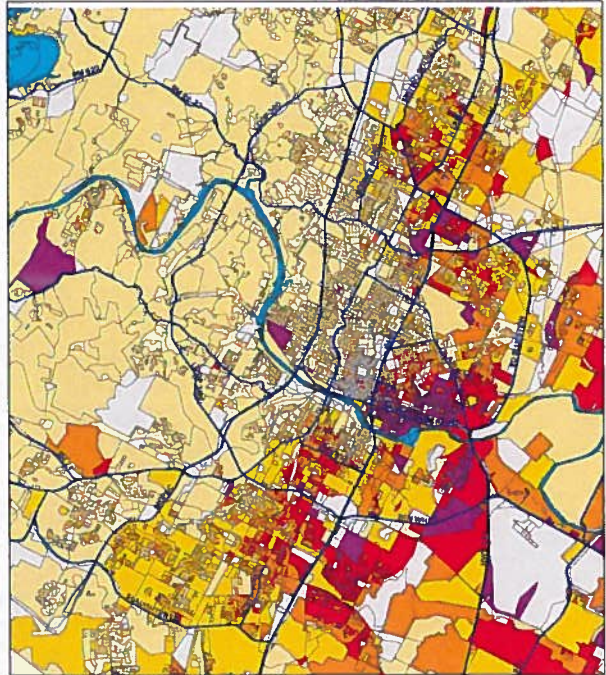
Austin, Texas. 1990 Census and Census 2000 Data.



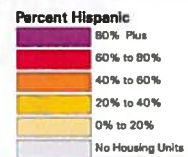
1990 Population



Map produced by The City Demographer, Department of Planning, City of Austin, October 2001

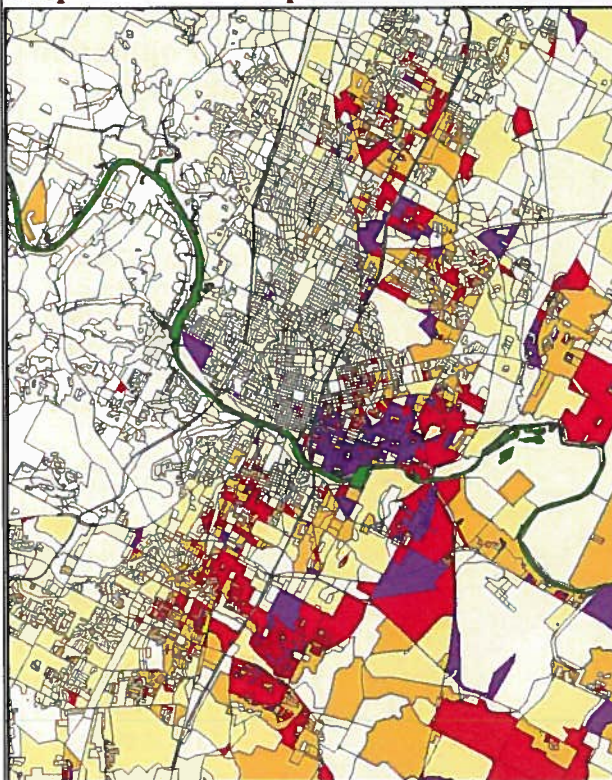


2000 Population

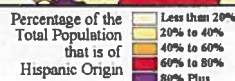


Changing Hispanic Landscape

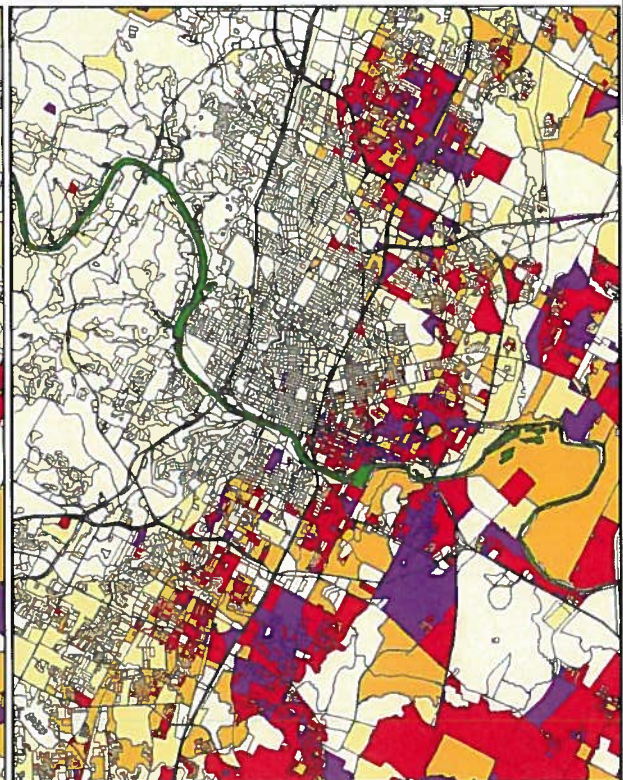
Hispanic-Latino Population Concentrations, 2000 and 2010



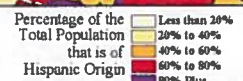
Census 2000 Data
Census Blocks

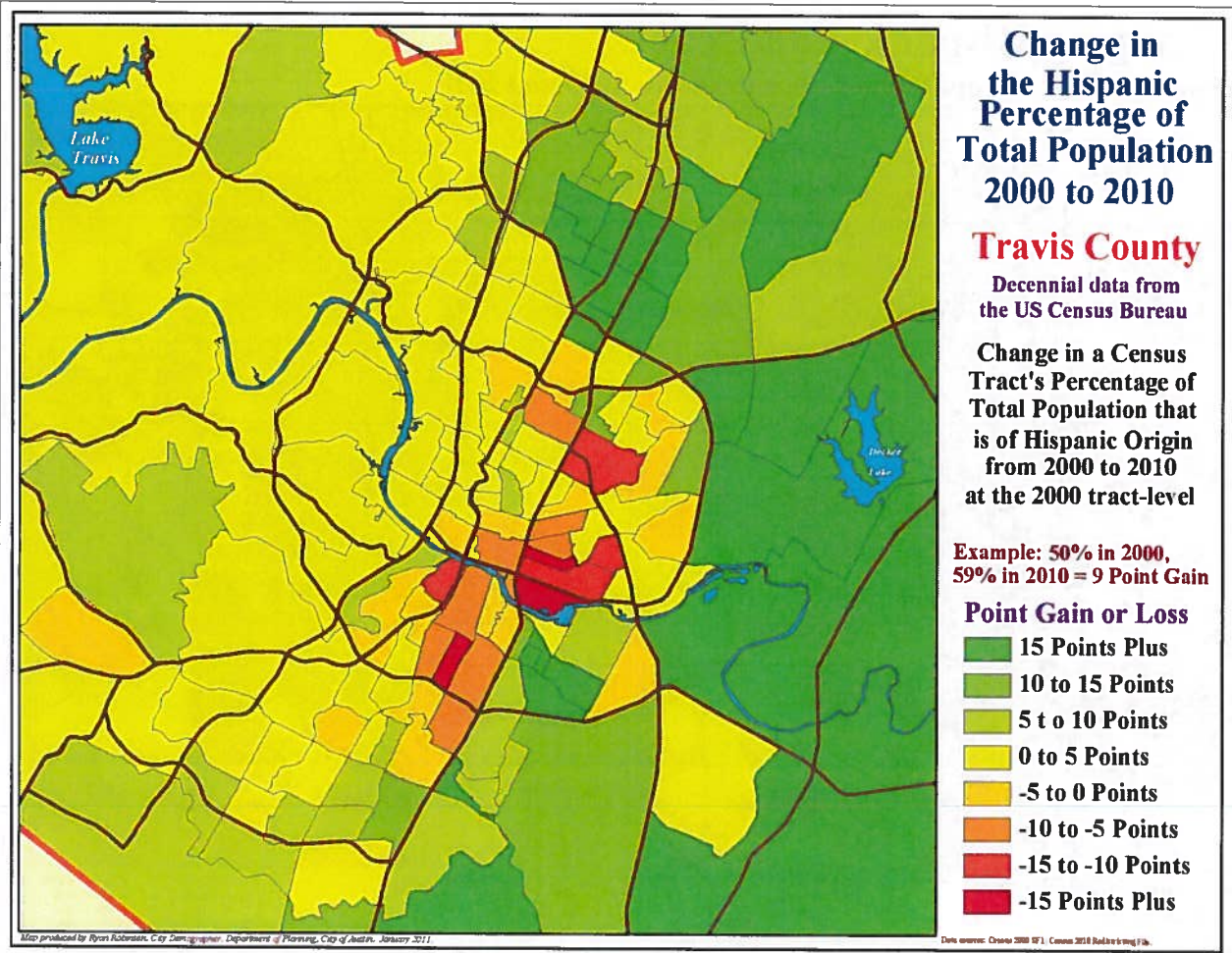
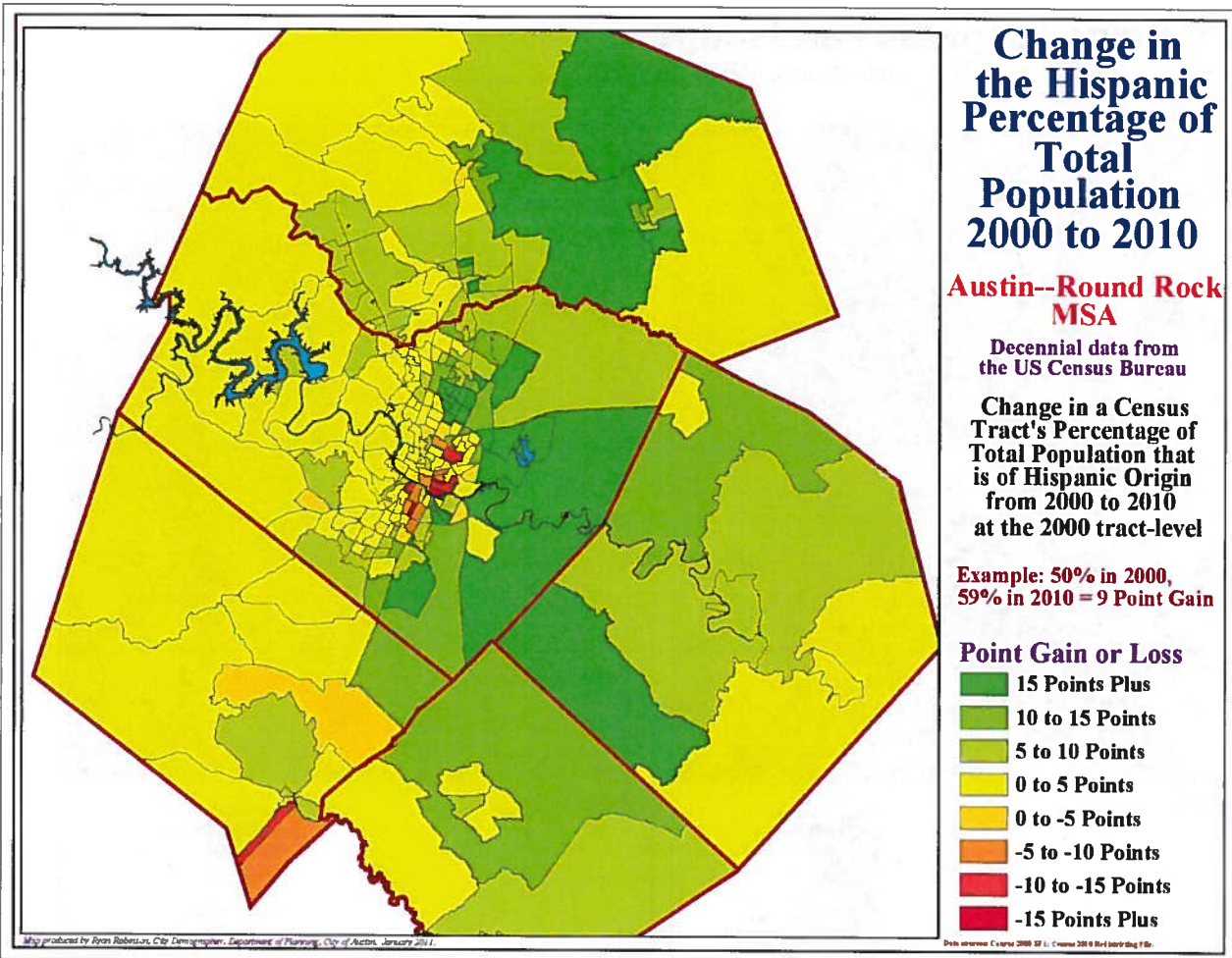


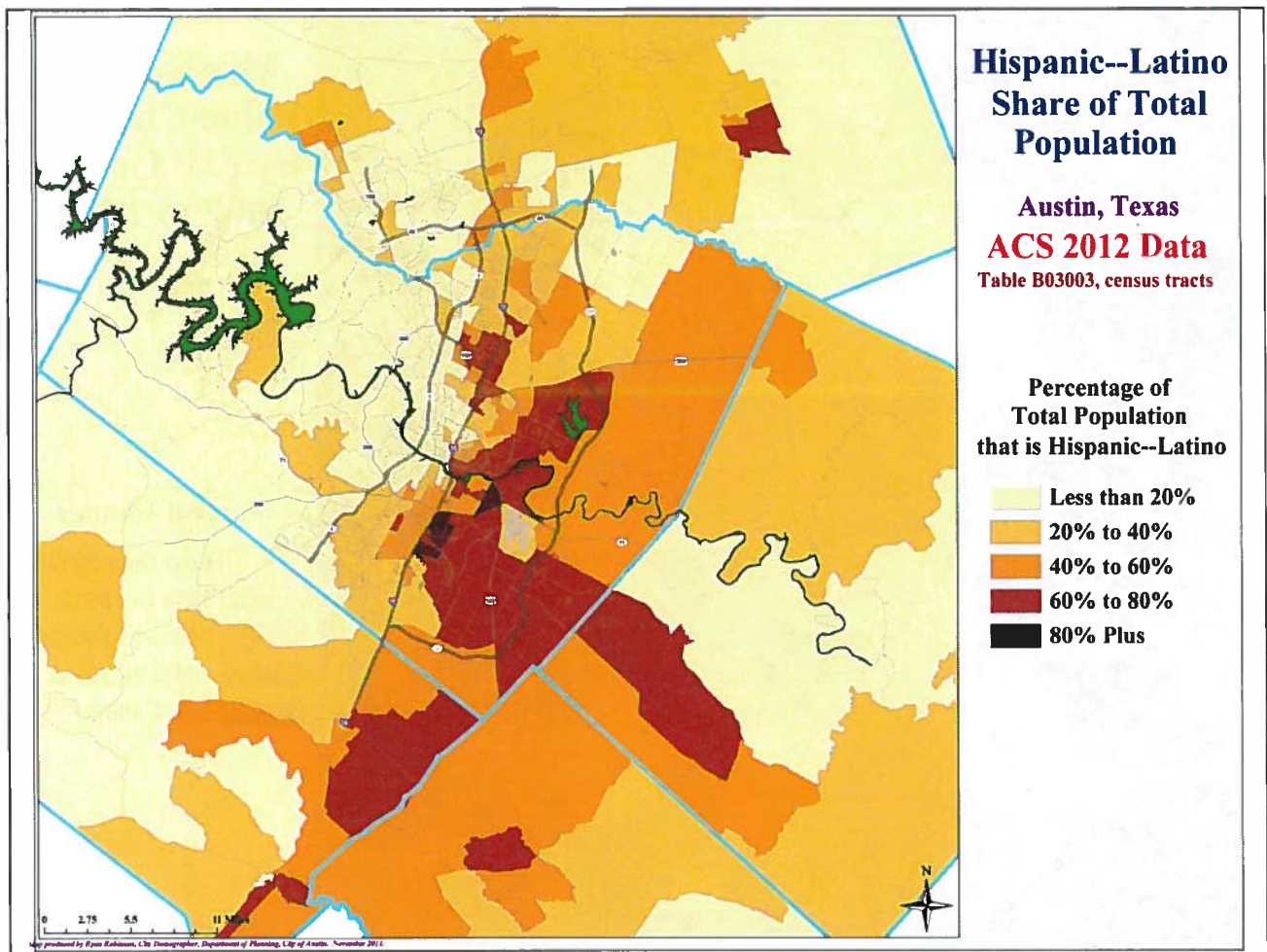
Map produced by The City Demographer, Department of Planning, City of Austin, October 2001



Census 2010 Data
Census Blocks



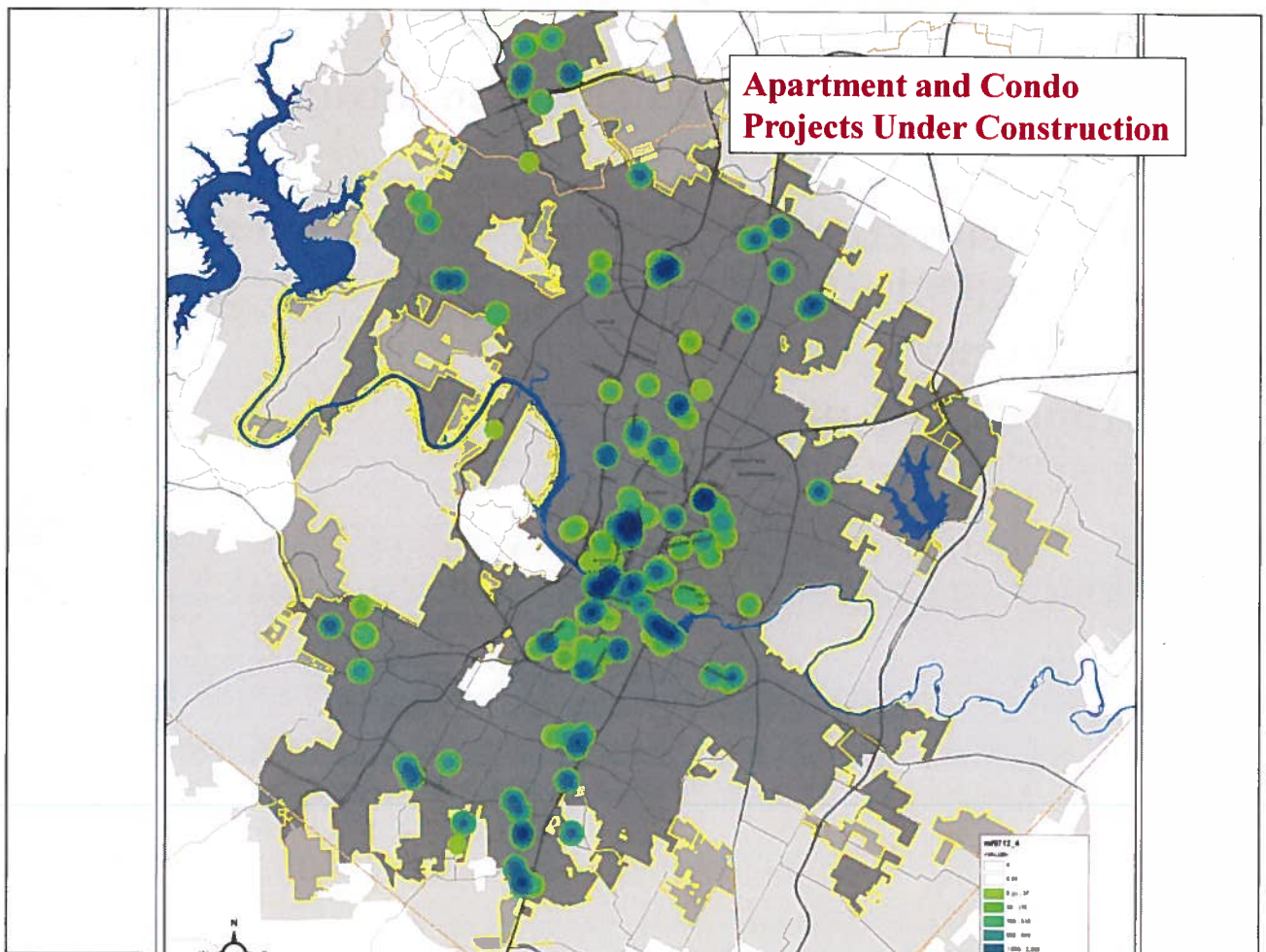
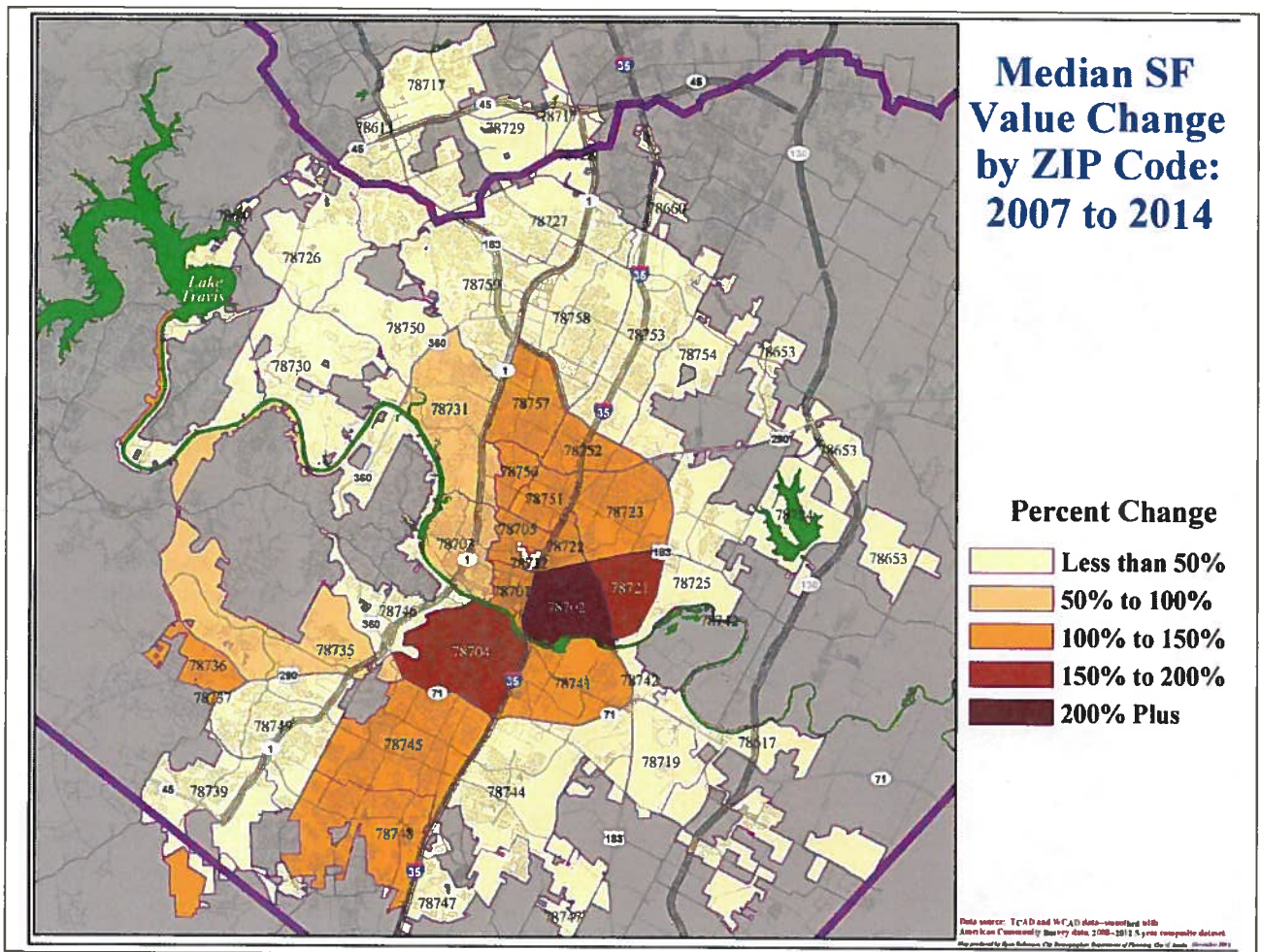




Hispanic/Latino Trends in Austin

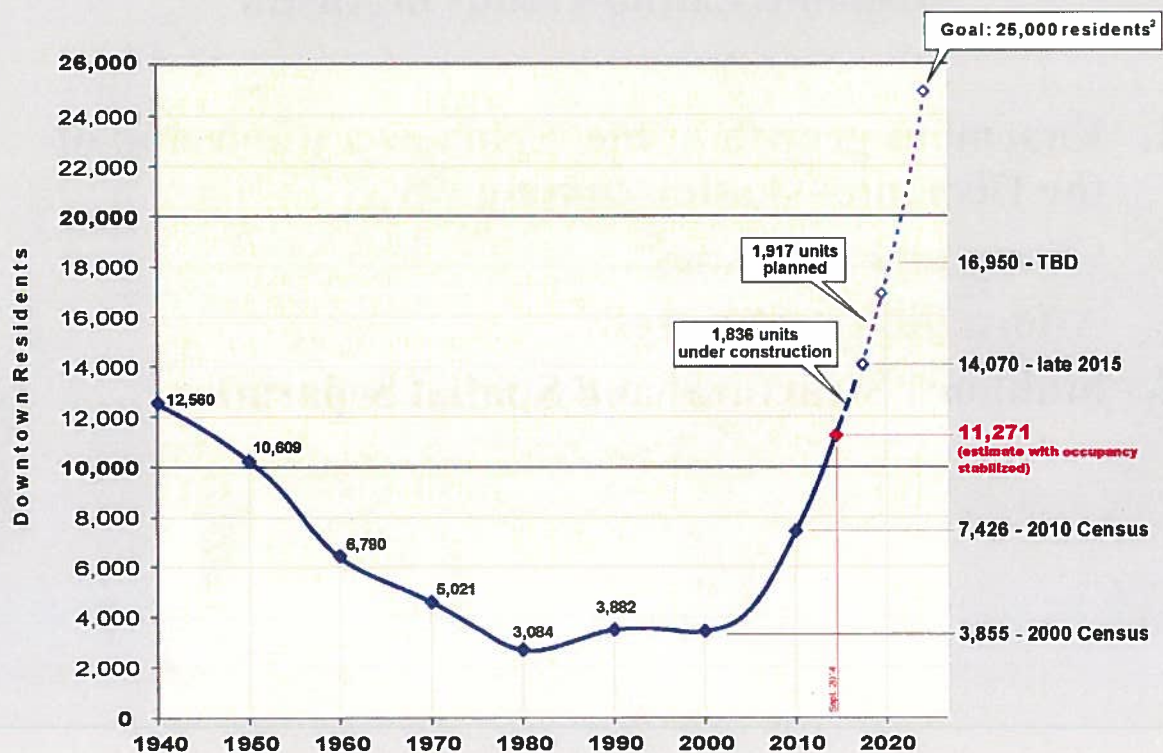
1. Enormous growth of the region as a whole and of the Hispanic--Latino community...
2. Changing landscapes...
3. Affordability pressures...



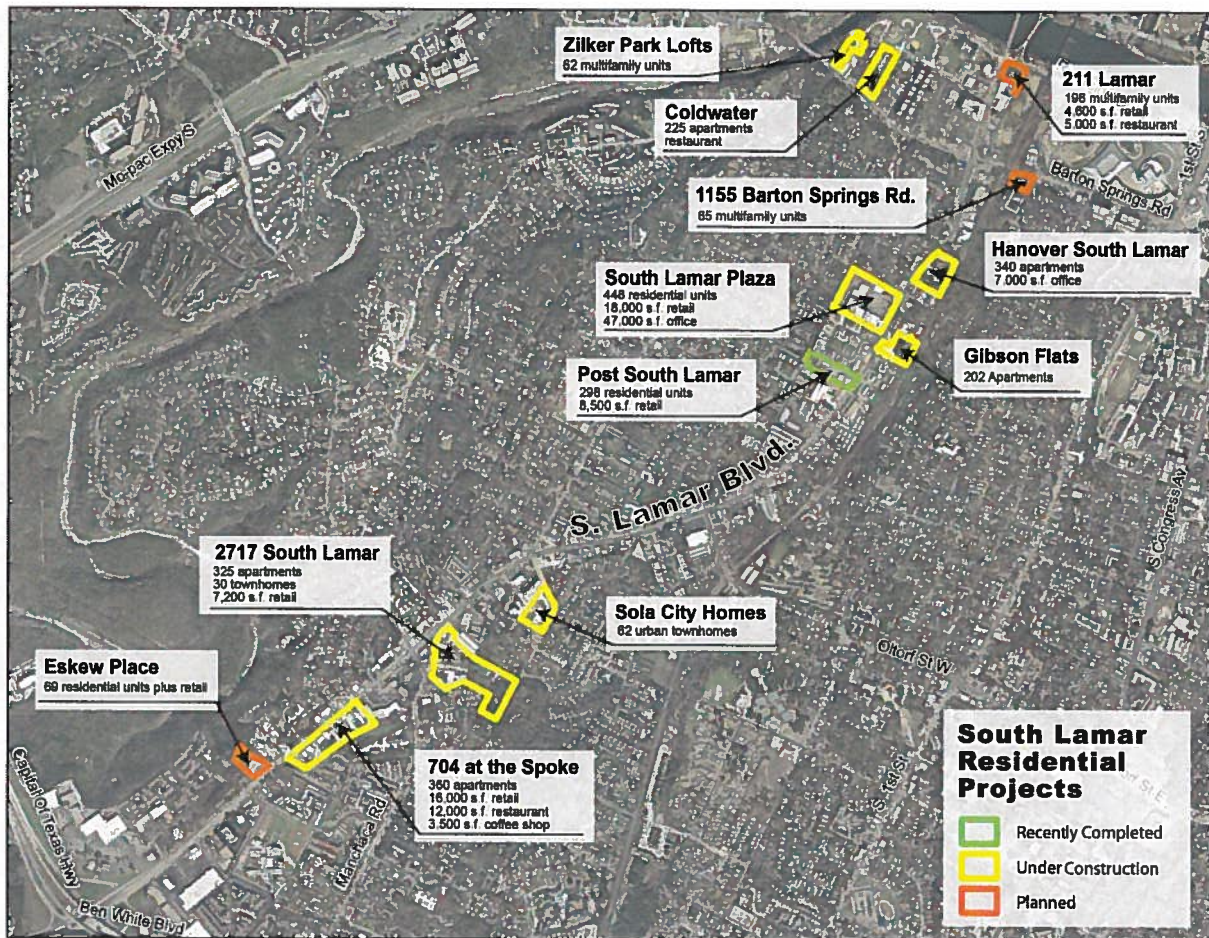




Downtown Austin Residential Change — 1940-Present



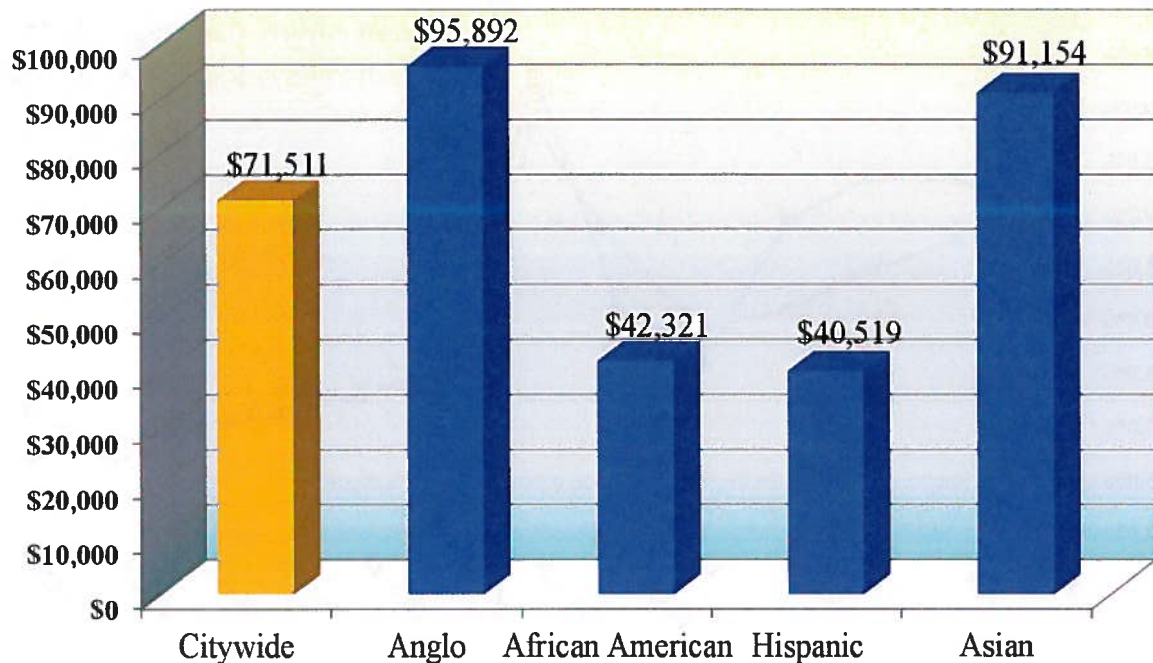
1. I-35 — Lady Bird Lake — Lamar — MLK
 2. Council Resolution 20051215-056



Hispanic/Latino Trends in Austin

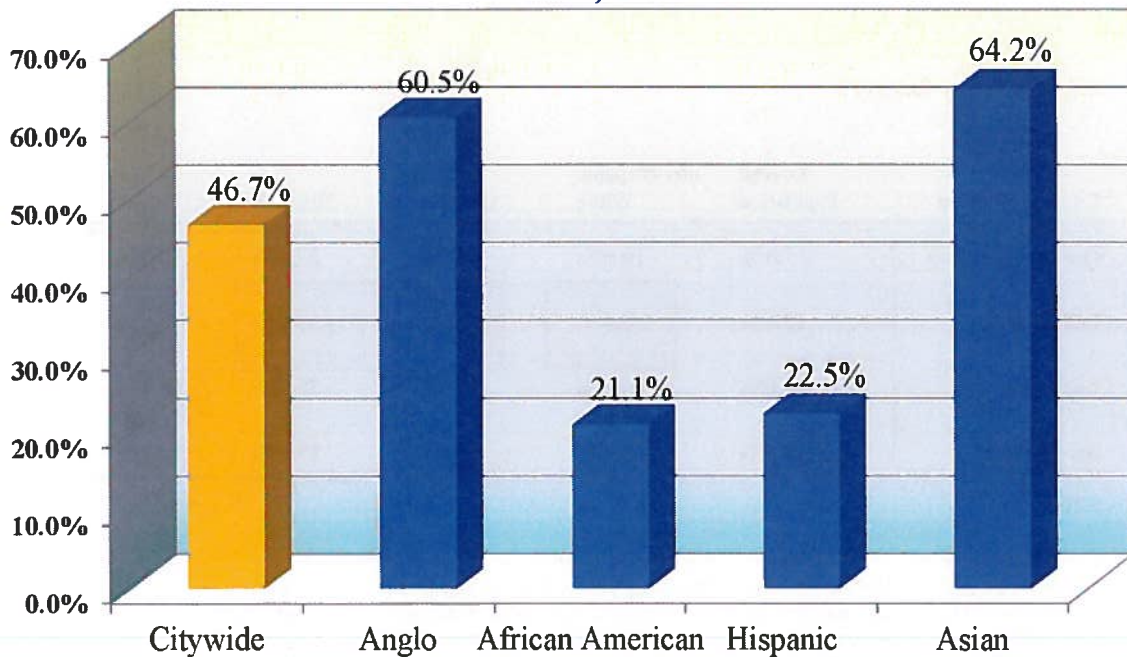
1. Enormous growth of the region as a whole and of the Hispanic—Latino community...
2. Changing landscapes...
3. Affordability pressures...
4. **Stubborn Structural and Spatial Separations...**

Median Family Income by Race and Ethnicity, City of Austin, 2013



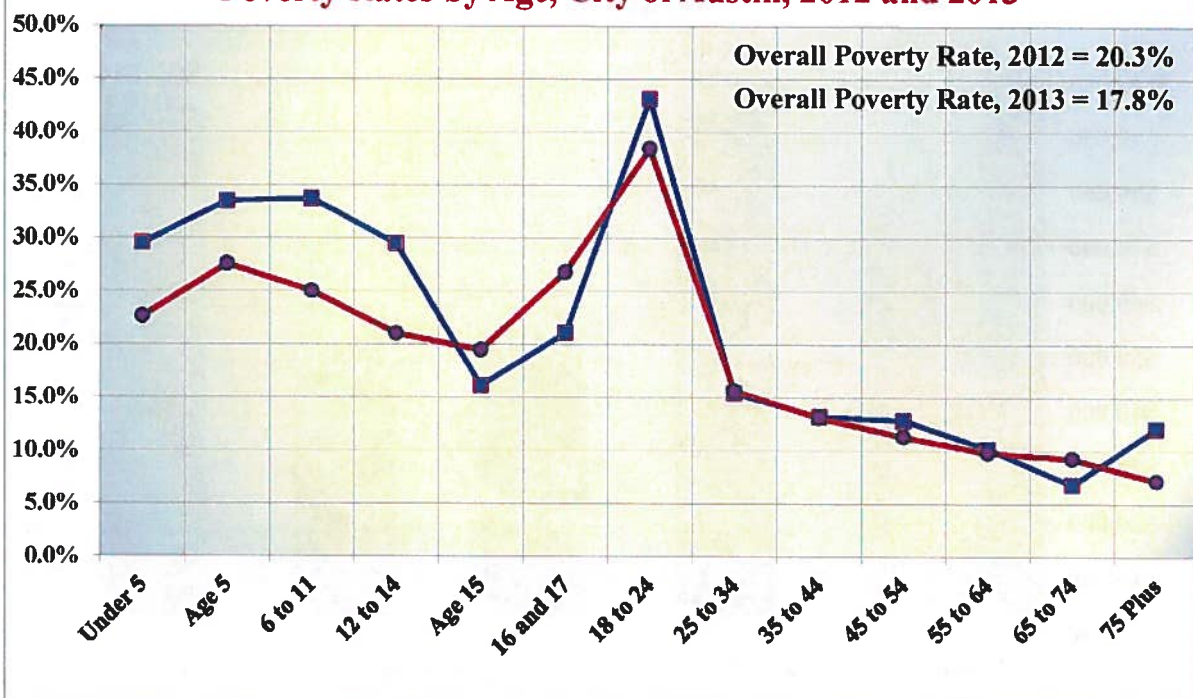
Source: American Community Survey, 2013 1-year estimates, Table B19113.

Educational Attainment by Race and Ethnicity, City of Austin, 2013



Source: American Community Survey, 2013 1-year estimates, Table B15002.

Poverty Rates by Age, City of Austin, 2012 and 2013



Poverty Rates by Age Group, Race and Ethnicity

City of Austin

American Community Survey, 2013, 1-year Estimates Series, Table B17001

Table I: Poverty Rates (1)

Category or Group	Overall Population	non-Hispanic White	African American	Hispanic	Asian
Overall Population	17.8%	10.6%	24.2%	27.5%	15.3%
Under Age 5	22.6%	5.4%	51.8%	33.0%	9.6%
Under Age 18	23.6%	6.8%	34.6%	36.5%	10.3%
Age 65 Plus	8.4%	4.0%	13.0%	19.9%	19.6%

NOTES:

(1) The source for data behind this table on Poverty in metropolitan Austin is the American Community Survey, which is produced by the US Census Bureau. Data for this table are from the 2013 1-year Estimates Series. Poverty rates are calculated for only the portion of the total population that lives within a household, poverty rates are not calculated for institutionalized persons or individuals living within Group Quarters situations. The Poverty Rate is a function of total annual household income and the number of individuals within a household. The 2013 Poverty threshold for a family of four was \$23,835

Poverty Rates by Age Group, Race and Ethnicity

City of Austin

American Community Survey, 2012, 1-year Estimates Series, Table B17001

Table I: Poverty Rates (1)

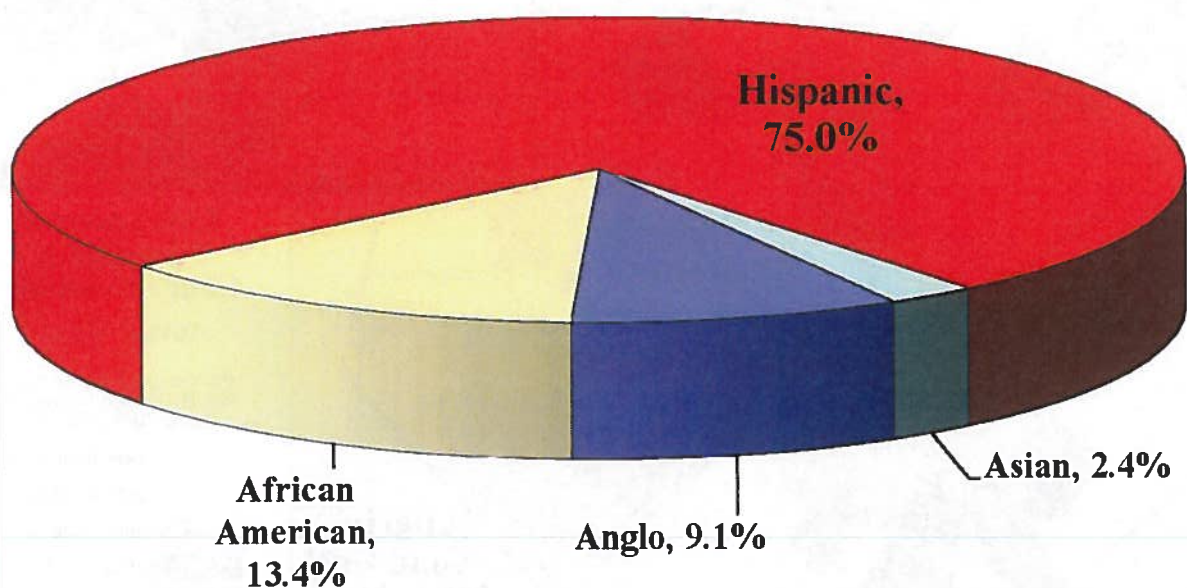
Category or Group	Overall Population	non-Hispanic White	African American	Hispanic	Asian
Overall Population	20.3%	11.7%	30.6%	31.1%	16.2%
Under Age 5	29.5%	6.7%	52.9%	44.0%	9.2%
Under Age 18	30.0%	8.0%	52.7%	44.8%	6.0%
Age 65 Plus	9.0%	6.4%	13.3%	14.4%	12.6%

NOTES:

(1) The source for data behind this table on Poverty in metropolitan Austin is the American Community Survey, which is produced by the US Census Bureau. Data for this table are from the 2012 1-year Estimates Series. Poverty rates are calculated for only the portion of the total population that lives within a household, poverty rates are not calculated for institutionalized persons or individuals living within Group Quarters situations. The Poverty Rate is a function of total annual household income and the number of individuals within a household. The 2012 Poverty threshold for a family of four was \$23,550

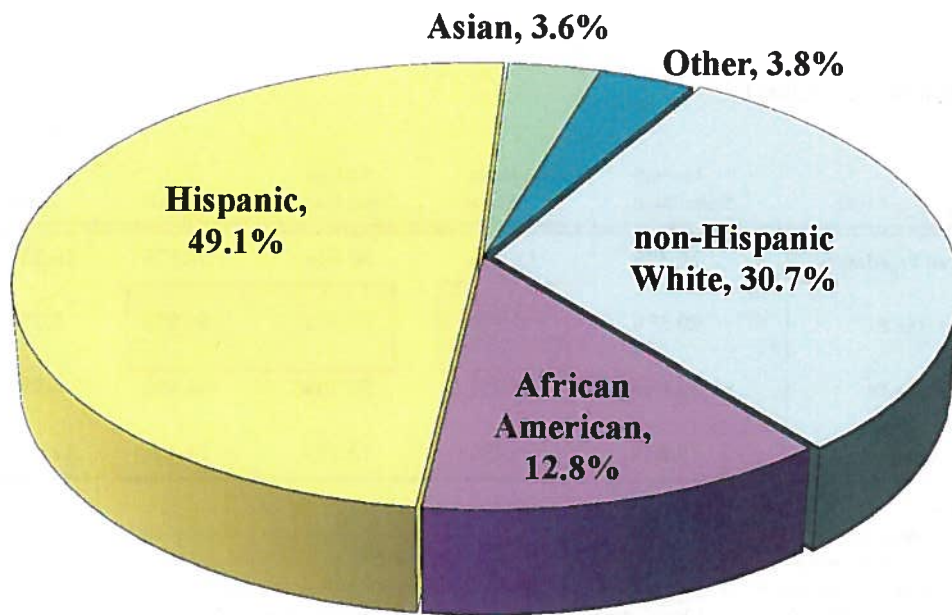
City of Austin, Under 5 and in Poverty, by Race and Ethnicity, 2013

Total = 12,500



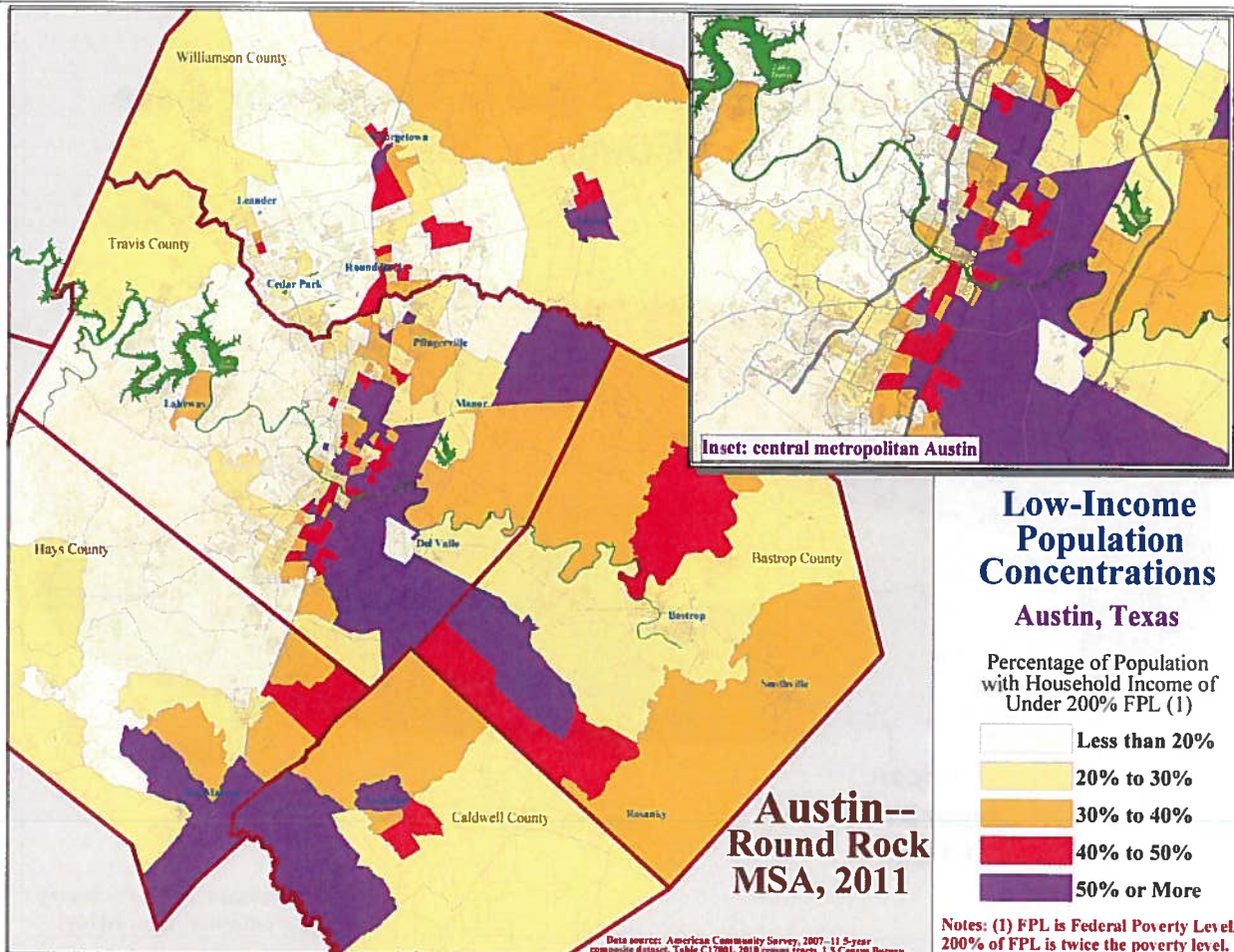
Source: American Community Survey, 2013 1-year estimates, Table B17001.

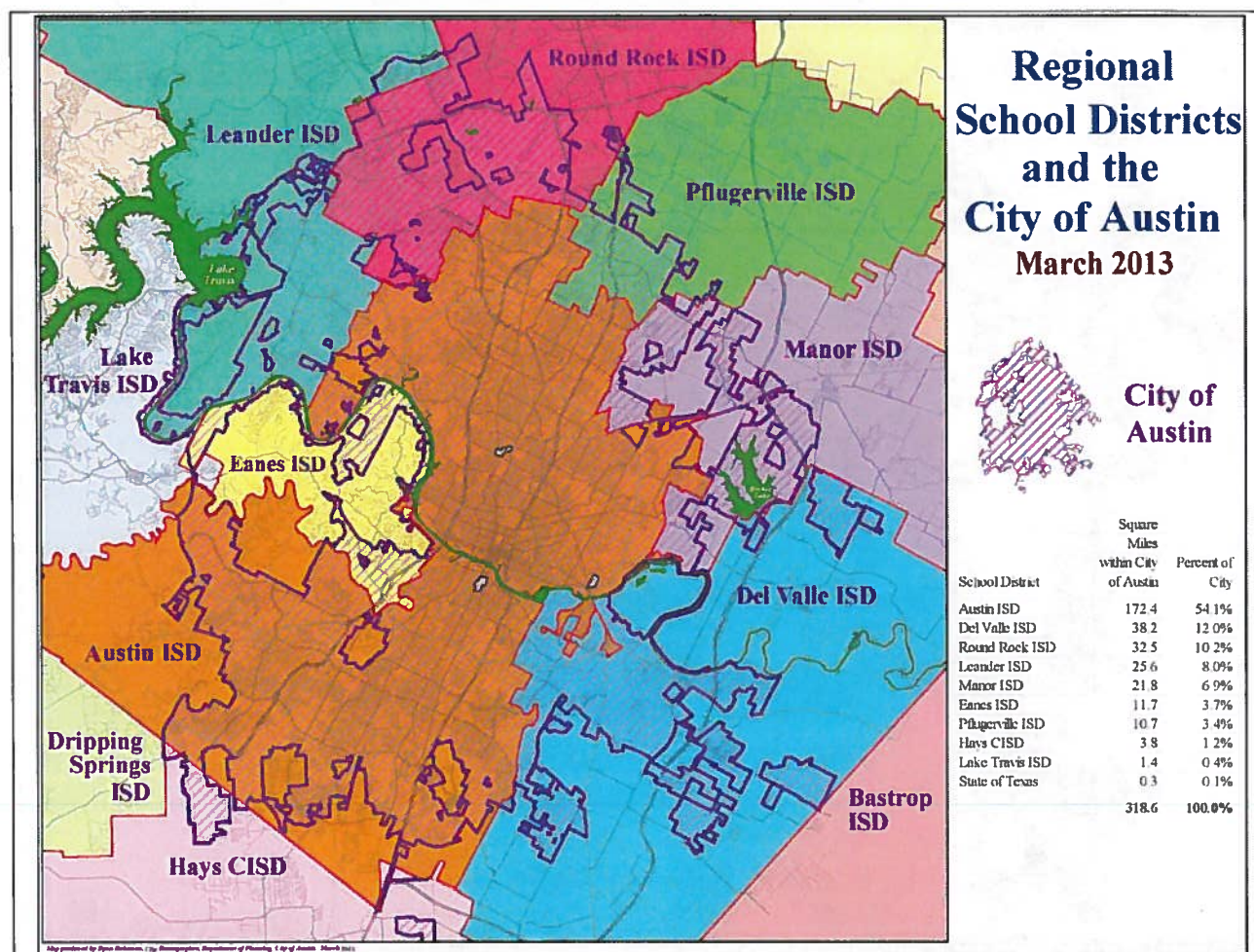
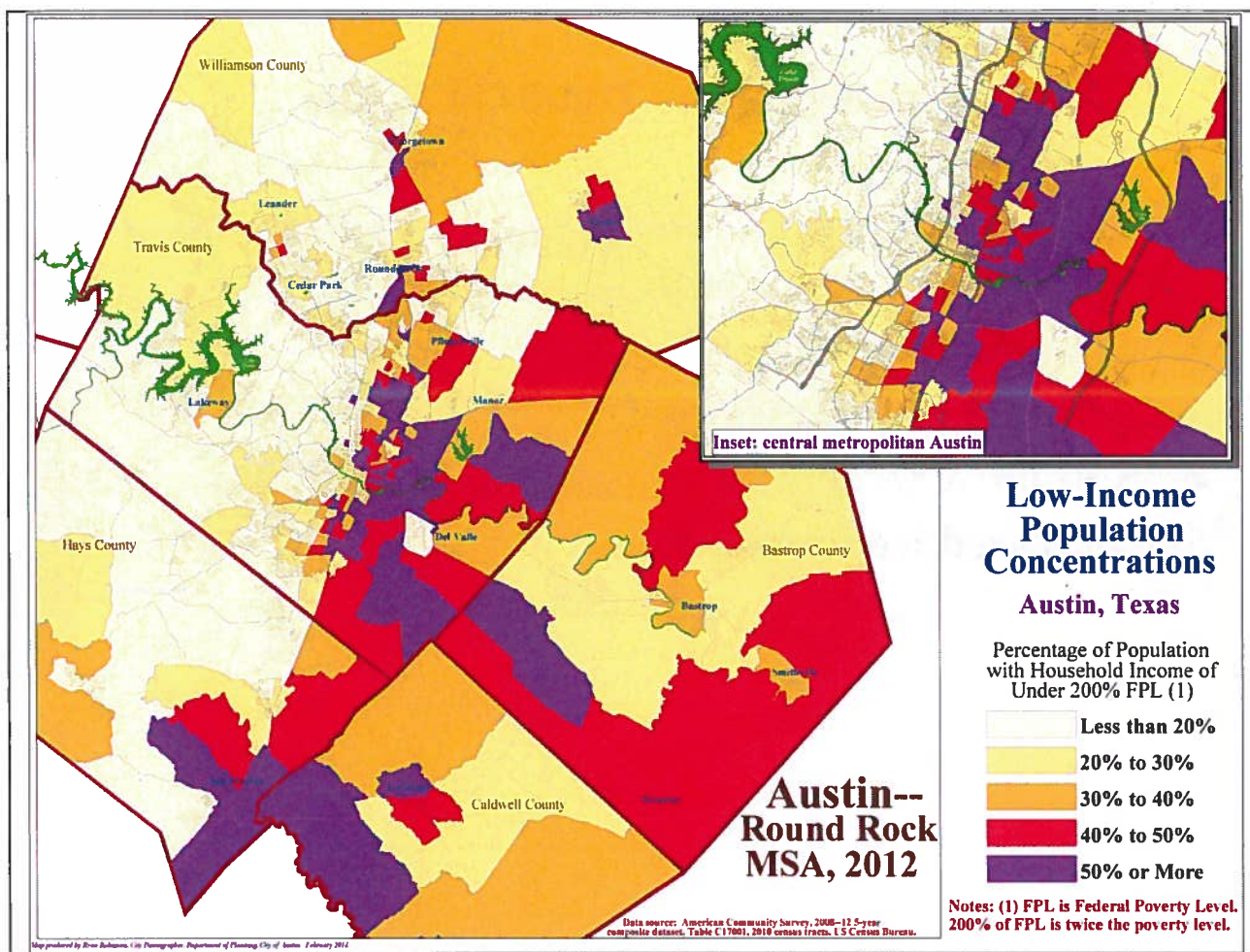
Race and Ethnicity of Population in Poverty, Austin MSA, 2012, n = 278K



SOURCE:

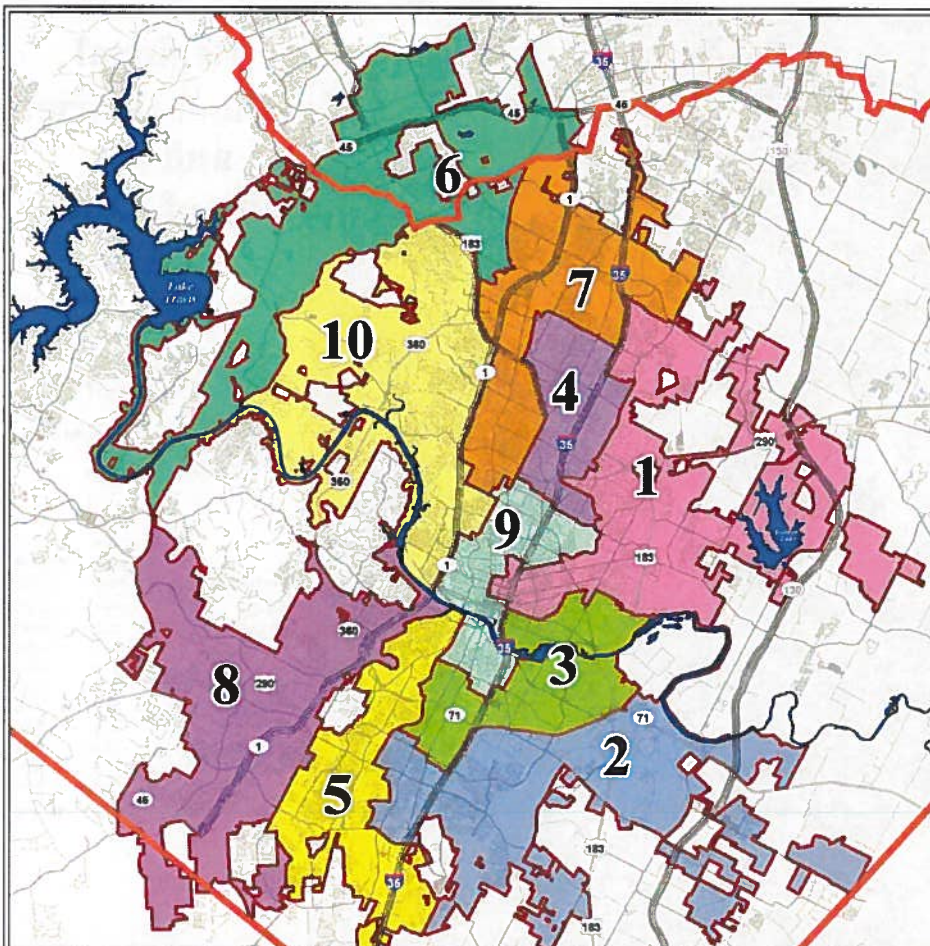
American Community Survey, 2012
Table B17001





Hispanic/Latino Trends in Austin

1. Enormous growth of the region as a whole and of the Hispanic community...
2. Changing landscapes...
3. Affordability pressures...
4. Stubborn Structural and Spatial Separations...
5. Increased Representation...



**ICRC Final Plan
November 2013**

**City of Austin
City Council
Districts**

Austin, Texas

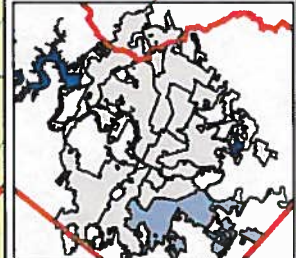


Map produced by: Ryan Robinson, City Demographer, City of Austin, December 2013.

District 2 Vote Distribution

Where did the Votes
Come From?

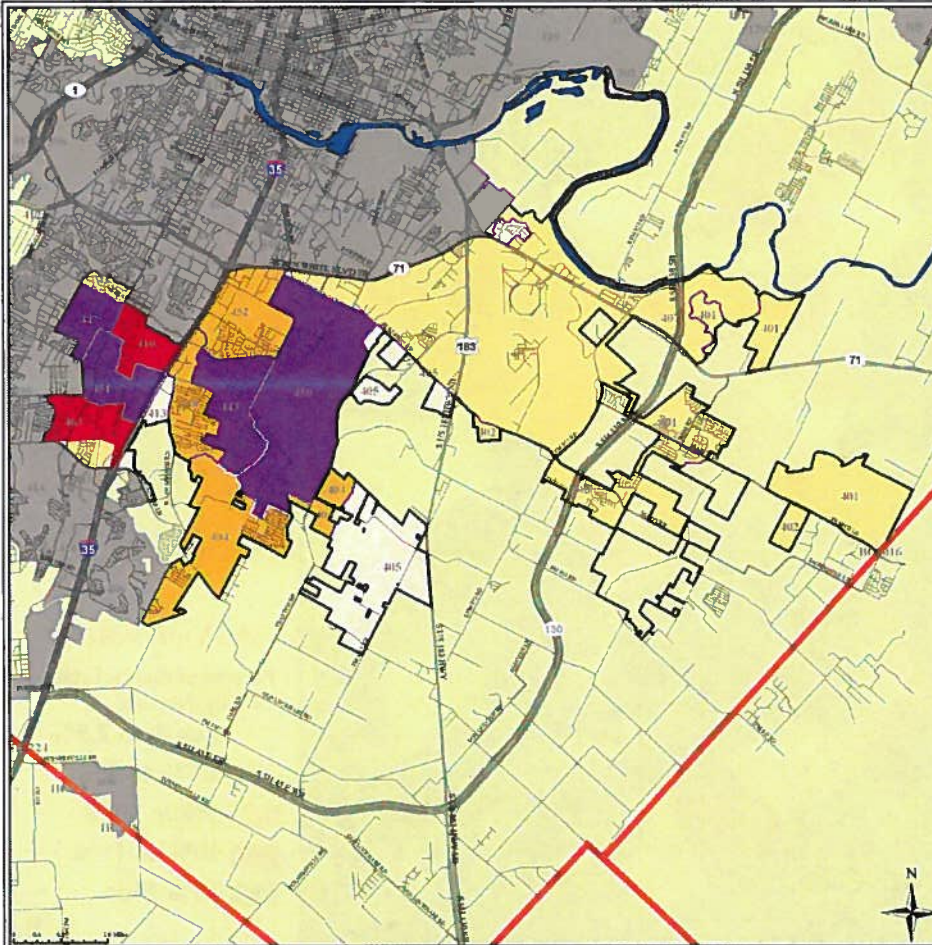
City Council
November 4, 2014
Austin, Texas



Total Votes = 8,467

Percent of Race's Total
Vote by Precinct

- Less than 2.5%
- 2.5% to 5.0%
- 5.0% to 7.5%
- 7.5% to 10%
- 10% Plus

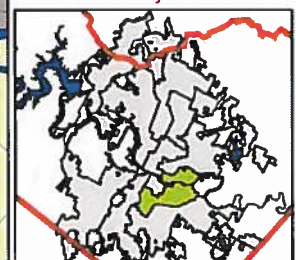


Map produced by: Ryan Robinson, City Demographer, City of Austin, November 2014.

District 3 Vote Distribution

Where did the Votes
Come From?

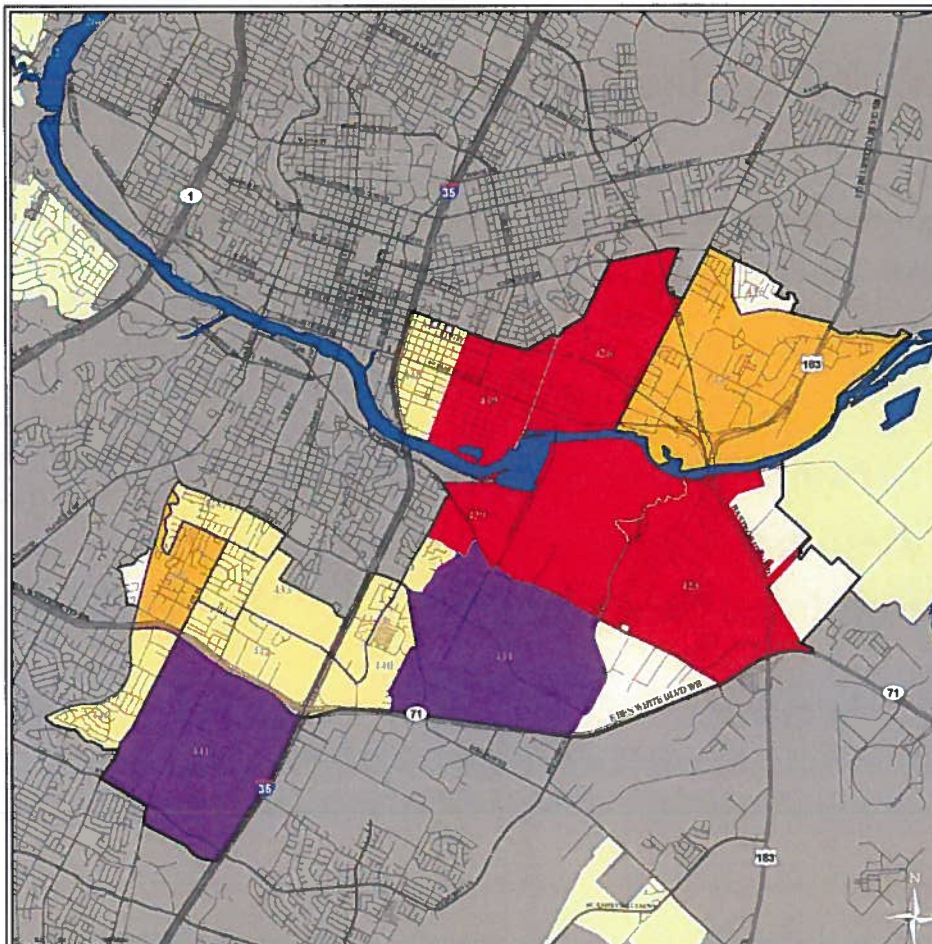
City Council
November 4, 2014
Austin, Texas



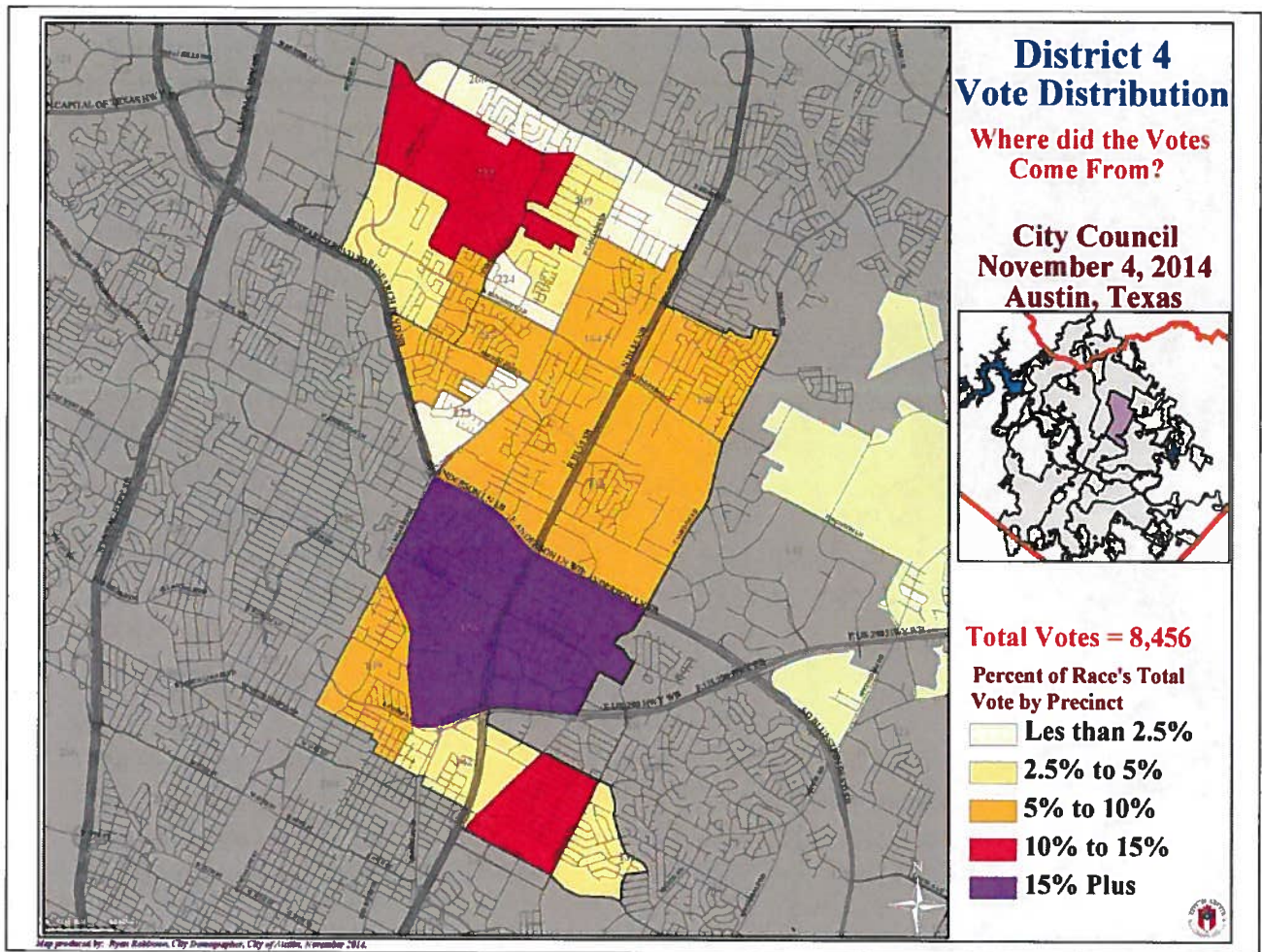
Total Votes = 10,182

Percent of Race's Total
Vote by Precinct

- Less than 2.5%
- 2.5% to 5.0%
- 5.0% to 7.5%
- 7.5% to 10%
- 10% Plus



Map produced by: Ryan Robinson, City Demographer, City of Austin, November 2014.



Hispanic/Latino Trends in Austin

1. Enormous growth of the region as a whole and of the Hispanic community...
2. Changing landscapes...
3. Affordability pressures...
4. Stubborn Structural and Spatial Separations...
5. Increased Representation...
6. **Toward an updated Scorecard...**

Hispanic Community Scorecard and Data Themes

An Analysis of Quality of Life Indicators for Austin's Hispanic Community

Data Theme figures are compared and benchmarked against the state of Texas, the nation, and a selected set of peer and near-peer cities.

Green indicates Ranking is Positive
Orange indicates Ranking is Negative
Yellow indicates Ranking is Neutral

Issue--Data Theme	Current Situation Compared with Other Communities	Peer Ranking	Level of Local Disparity and Comparison to Disparities in Other Communities	Depth of Disparity Ranking	Trend and Outlook
Family Income Source: 2007 ACS, Census Bureau	Hispanic families in Austin have one of the higher Median Family Incomes (MFI) in the nation when compared to Hispanic families living in other cities across the country and state.	11th	However, the disparity in Austin between MFI for Hispanic families and the City's overall MFI is significant, ranking 10th deepest out of the selected set. Hispanic MFI is 63.7% of overall MFI and less than half that of Anglo MFI.	10th	The long-term trend is that more and more Hispanic families are entering the middle-class, yet the direction of the short-term trend is less certain due to a slowing economy and dampened job growth.
Educational Attainment Source: 2006 ACS, Census Bureau	While just over 15% of Austin Hispanic individuals aged 25 and older hold a Bachelors degree or some degree higher--they rank as 8th highest for this indicator out of the set of 31.	8th	Although adult Austin Hispanics have one of the country's higher rates of educational attainment for Hispanics, the disparity between their rate and the City's overall rate is large, ranking 2nd deepest in terms of the gap when compared to other cities.	2nd	Austin should continue to receive an influx of Hispanic professionals and middle-class households from other parts of the state and nation as it has established itself as one of the top places for Hispanic entrepreneurs.
Home Ownership Source: 2006 ACS, Census Bureau	Austin has one of the lowest rates of home ownership in the nation, ranking 27th in the selected set of comparables, and yet Hispanic households rank 17th when compared to Hispanics elsewhere.	17th	While the differences between racial and ethnic groups in Austin in terms of home ownership are not deep, they are not insignificant. For example, the overall rate is 47.3% for the City while the rate for Hispanic households is 37.1%.	20th	The trend in Hispanic home ownership is positive, evidenced by the rate increasing from 36.5% in 2000 to 37.1% in 2006. But this trend could be negatively affected by the nation's mortgage crisis.
Poverty Source: 2007 ACS, Census Bureau	The poverty rate for Hispanics in Austin, like the poverty rate for the City as a whole, falls about in the middle of a rank ordering of benchmarks.	15th	The City's overall poverty rate from ACS 2007 is 17.5%, and the Hispanic rate is 23.1%, a somewhat shallow level of disparity when compared to the depth of poverty disparities in other places. Austin's disparity ranks 14th in the selected set.	14th	The long-term trend is probably positive. While the past several years have witnessed an increase in the City's overall poverty rate, there was a smaller jump in the Hispanic rate since year 2000 data were collected.
Unemployment Source: 2006 ACS, Census Bureau with 2002 Economic Census data for missing values from ACS.	Austin Hispanics have an overall unemployment rate that ranks 15th within the selected set, and yet the simple rate of unemployment can often disguise deeper seeded underemployment.	15th	The difference between Austin's overall rate of unemployment and the rate for Hispanics is not large (6.5% vs. 7.5%) yet when compared to the situation in other communities, the gap ranks as 8th largest in the selected set.	8th	The local economy has only recently begun to slow its rate of expansion after several years of vigorous growth, but big questions remain concerning the quality of new jobs in terms of pay and health care benefits.

Hispanic Community Scorecard and Data Themes

An Analysis of Quality of Life Indicators for Austin's Hispanic Community

Data Theme figures are compared and benchmarked against the state of Texas, the nation, and a selected set of peer and near-peer cities.

Page Two

Green indicates Ranking is Positive
Orange indicates Ranking is Negative
Yellow indicates Ranking is Neutral

Issue--Data Theme	Current Situation Compared with Other Communities	Ranking	Level of Local Disparity and Comparison to Disparities in Other Communities	Disparity Ranking	Trend and Outlook
Business Ownership Source: 2002 Economic Census	Austin has one of the higher rates of Hispanic business ownership when compared to peer cities, ranking 10th in the set with 11.5% of businesses being owned by Hispanics.	10th	Although the share of Hispanic business ownership in Austin is relatively large, the discrepancy between the ownership rate and the population share is one of the deepest in the country when ranked against other figures from the study set.	6th	The long-term trend is decidedly positive as Austin continues to emerge as one of the nation's hot markets for Hispanic entrepreneurs, consistently ranking highly on HispanicBiz's Best Places List.
Ethnicity Shares Source: 2006 ACS, Census Bureau	Two of the defining characteristics of Austin's Hispanic community are its sheer size and the rapidity of its growth within a single generation. One out of three Austinites is now Hispanic.	7th	As a general rule, and there are exceptions, cities with larger Hispanic population shares tend to have smaller disparities between themselves and the overall population in terms of family income and other socio-economic factors.	na	Hispanics should continue to make up the majority of new residents to central Texas and the City of Austin over the next 30 years as higher rates of fertility and in-migration will drive huge population increases.
Age Structure Source: 2006 ACS, Census Bureau	Austin's Hispanic community is a relatively young one when compared to other ethnic groups and to the City as a whole as almost 33% of all Hispanics in Austin are under the age of 18.	Please see Graph 17		Please see Graph 18	Hispanics are now a majority of Austin's under age 18 population. This watershed event will have long-term demographic consequences in terms of resource allocation planning for education and health care issues.
Housing Patterns Source: Census 2000.	Residential segregation of middle-class Hispanic households has decreased dramatically in Austin in the past few decades while working-class Hispanic households are increasingly clustered.	Please See Map 1 and Map 2	Several large working-class Hispanic barrios have recently emerged across the City where the Hispanic population often comprises more than 80% of the total neighborhood's population. Dove Springs and St. Johns are two examples.	Please See Map 1 and Map 2	Upper and middle-class Hispanic households exist in every affluent and middle-class neighborhood in Austin but working-class Hispanic households tend to be increasingly segregated into large barrios.
Community Issues Please see various Data Themes	Data Themes: --Immigration and Non-Citizens --Academic Performance --Teen Pregnancy --Single Parents --Occupational Structure --Housing Pressures		Please see: --Graph 19: Non-Citizen Shares --Graph 20: High School Completion Rates --Graph 21: SAT Scores --Graphs 22, 23: Teen Pregnancy Rates --Graph 24, 25: Unwed Mothers, Income --Graph 26: Occupational Structure		Please see: --Map 3: Immigrant Concentrations --Map 4: Spanish Speakers --Map 5: Single Mothers --Map 6: Residential Foreclosures --Map 7: Section 8 Housing

Analysis Observations/Conclusions

- Huge absolute population growth and a soaring share of total population, within the City and across the region.
- Majority of children in Austin are now Hispanic.
- Deep, persistent socio-economic gaps exist and yet there's an expanding middle-class and a relative socio-economic advantage to other Hispanic communities around the country.
- Austin's Hispanic community is not culturally monolithic but rather contains an amazing amount of internal diversity.
- Radically reduced residential segregation for middle-class households coupled with intense concentration and heightened segregation for working-class households.
- Potential emergence of two communities: one fully integrated and engaged, and the other isolated, existing within a cultural bubble--and this sub-community is decidedly disadvantaged.