

# Protecting Endangered Salamander Habitat at Upper Barton Spring

Tom Devitt, Ph.D.

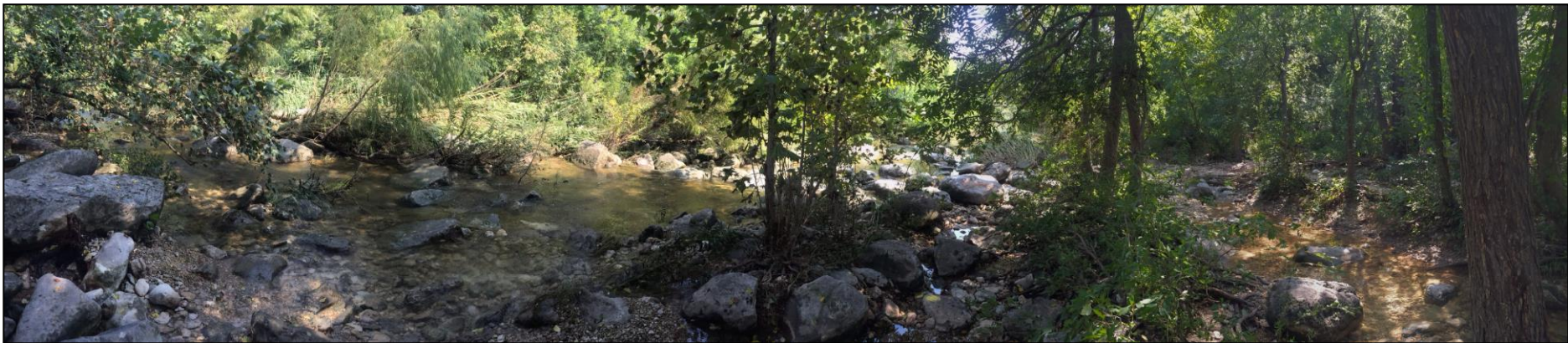
Watershed Protection Department



# Four Spring Sites



Upper Barton Spring



# Threats to Salamanders at UBS

- Swimming, wading, bathing, moving rocks crushes salamanders
- Making dams changes natural flow
- Graffiti, feces, & litter wash contaminants into creek



# Ashes





# Graffiti





# Graffiti





# Graffiti





# Graffiti





# Graffiti





# Paint





# Paint





# Litter





# Litter





# Litter





# Human feces





# 6.1 Measures to Minimize Impacts<sup>1</sup>

**6.1.1.6 The City will prohibit the following activities** to reduce harassment of *Eurycea sosorum* and *E. waterlooensis* and protect associated habitat:

- a. unauthorized, deliberate disturbance of salamander habitat, including substrate, aquatic vegetation, algae, and leaf litter or woody material,
- b. unauthorized, deliberate disturbance of flow regime

<sup>1</sup> City of Austin Habitat Conservation Plan for *Eurycea sosorum* and *E. waterlooensis*



# Signage

## Endangered Species Habitat

Tread lightly



Federally  
Protected Habitat



Moving rocks or changing the  
flow pattern is vandalism.

Please do not build dams in  
this area.

Thank you.

For more information: [austintexas.gov/watershed](http://austintexas.gov/watershed)

Dear City of Austin,

This Sign was the First u-natural thing at the  
Small Spring. Accusing people with vandalism,  
Threatening

Causes vandalism. Please Post a temporary Flyer  
there; identifying the date of Your free  
educational Workshop on Sustaining the Life  
of the Salamanders. Your punishment  
is to clean the vandalism off  
of the Rocks. Educate +  
inform the People. Don't Tell them  
They're Bad.

Sincerely,

Trevor James Constable.

☺

Dr. Wilhelm Reich



Zilker  
entrance to  
greenbelt



New fencing



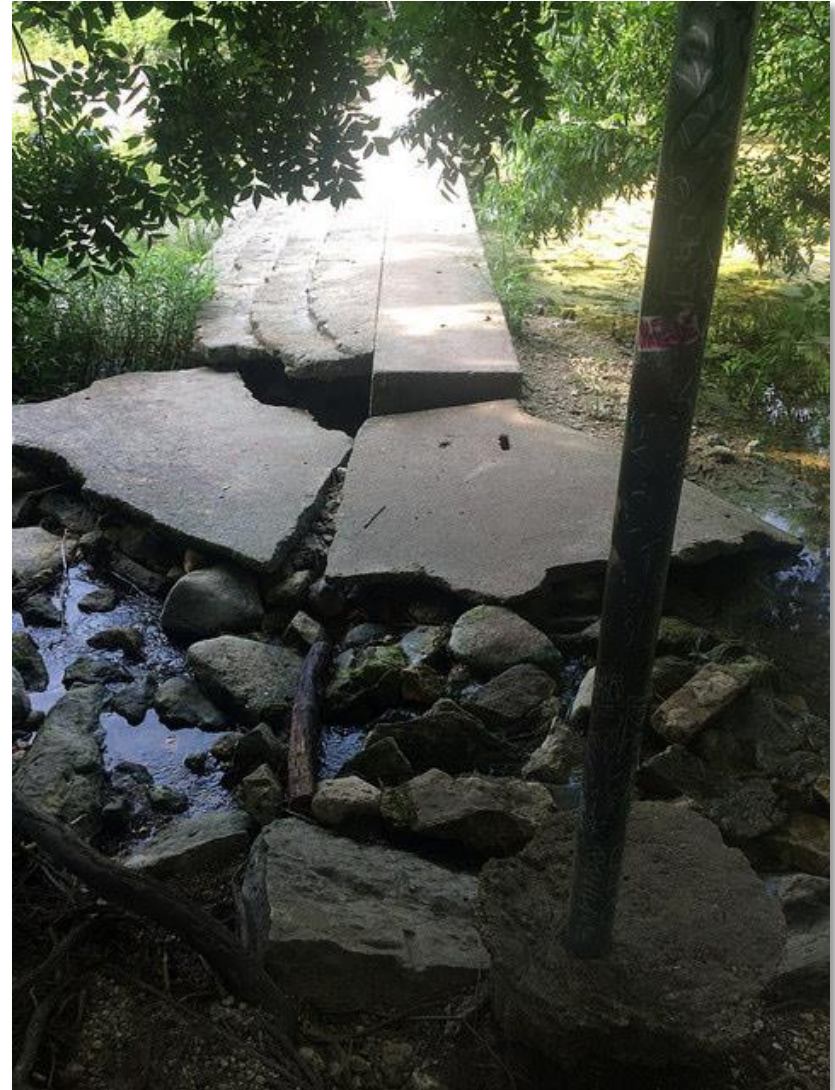
Gate across service drive to BSP

Zilker entrance to greenbelt



# Gravel Trap Dam

- constructed during bypass improvements (1976)
- Designed to prevent sediment and debris from entering bypass tunnel
- Does not serve its intended purpose
- Will be removed







Zilker entrance  
to greenbelt

Gravel trap dam

Pool

Google earth

Tour Guide 1995

Imagery Date: 3/9/2011 30°15'51.13" N 97°46'24.96" W elev 480 ft eye alt 877 ft



# Erosion from traffic across dam

North bank



South bank

