

Lockheed Rehab & Other Shaft Warranty Inspections

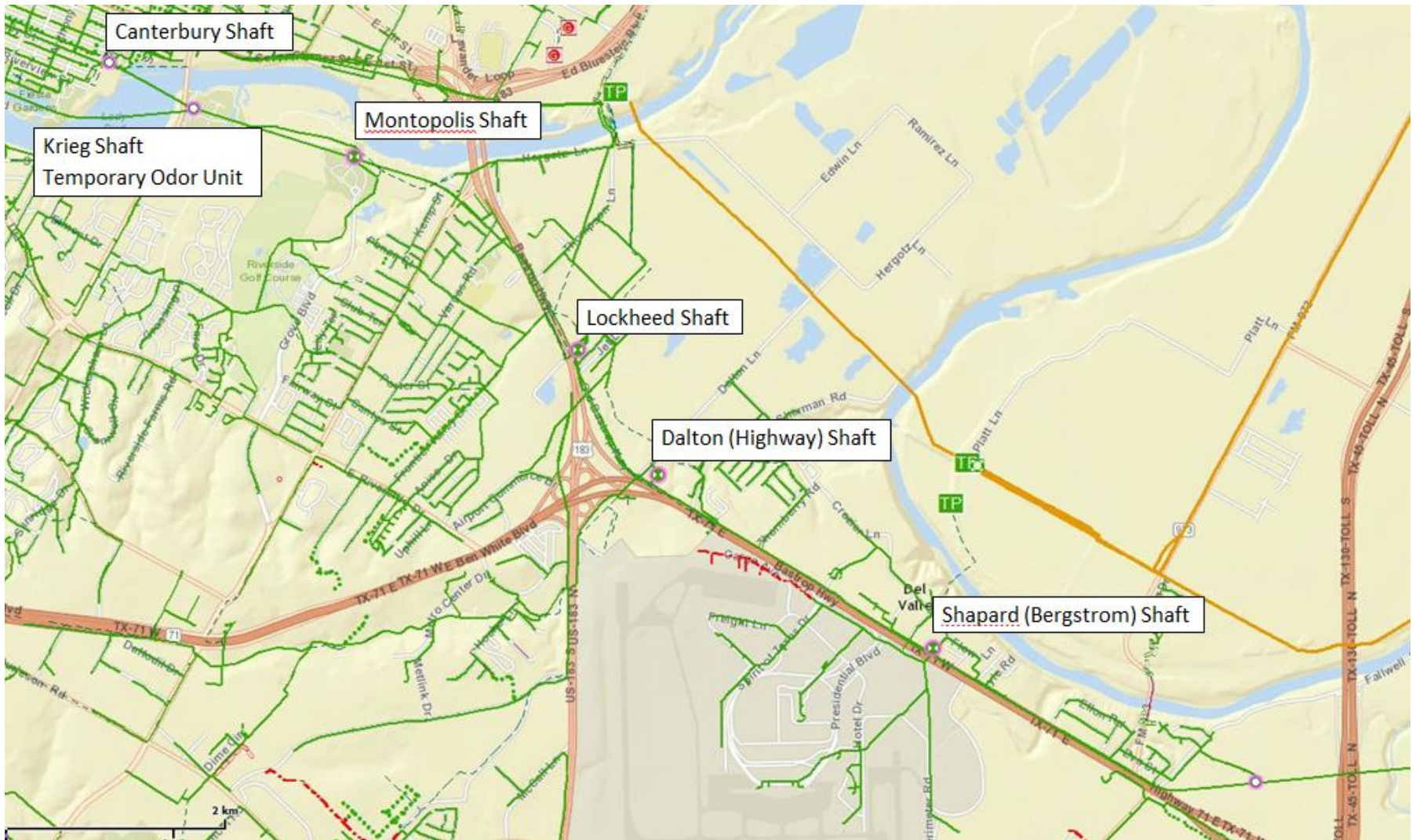
C.I.P. Project Number 4927.015

Krieg Field Temporary Odor Control Unit



December 9, 2014

Govalle Tunnel Shafts

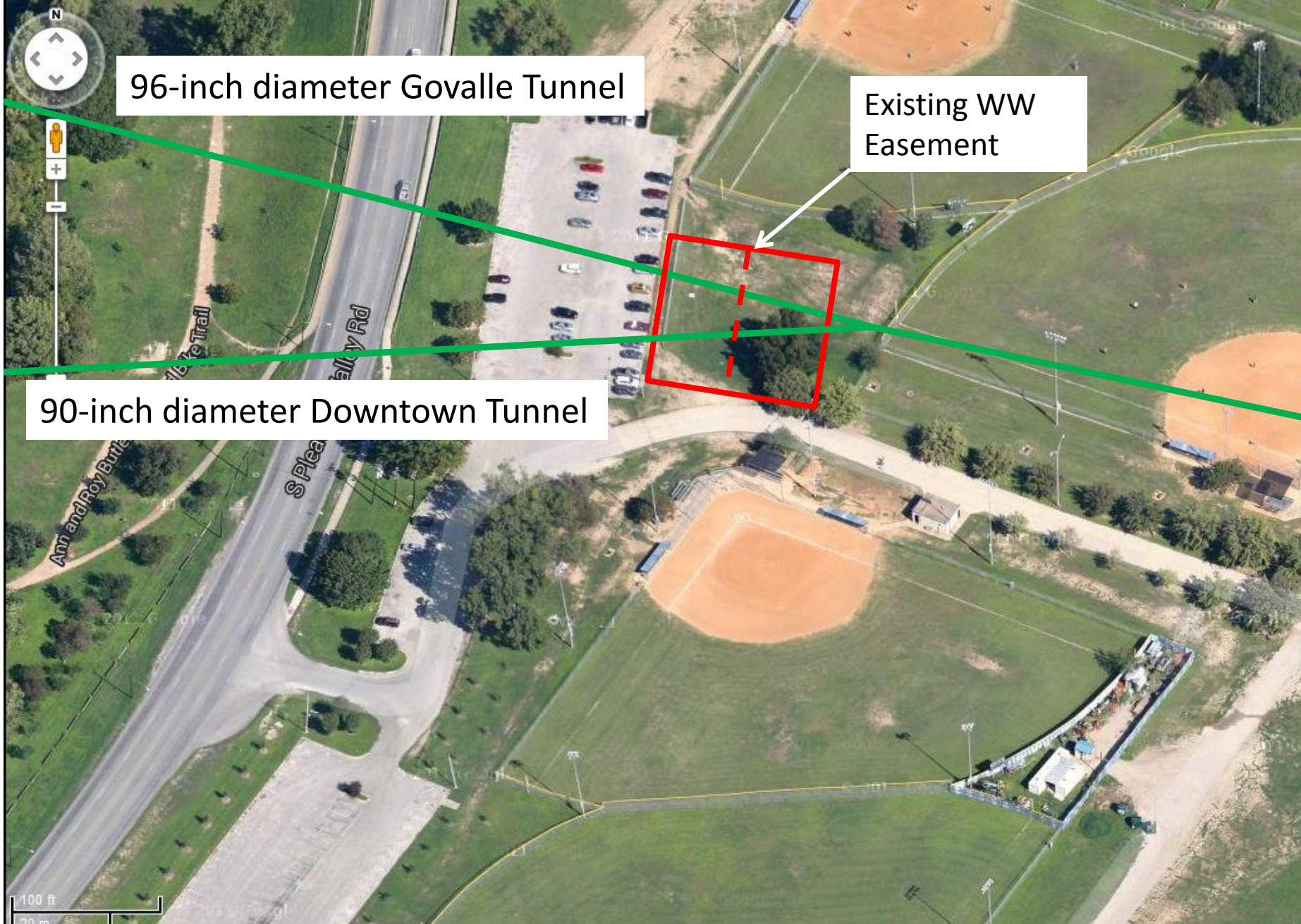


- The Lockheed Rehab Project includes inspection and rehabilitation of five wastewater shafts associated with the 96-inch diameter Govalle Wastewater Tunnel.
- During the Lockheed Rehab Project, the Central Odor Control Unit, located at the Lockheed Shaft, will be turned off.

96-inch diameter Govalle Tunnel

Existing WW Easement

90-inch diameter Downtown Tunnel



96-inch diameter Govalle Tunnel

The image is an aerial photograph of a sports complex with two baseball fields. A green line representing a tunnel runs diagonally from the top-left to the bottom-right. A red dashed rectangle highlights a specific area, with a blue square and a white arrow pointing to it. The blue square is labeled as the 'Temporary Odor Control Unit Footprint'. The map includes a compass rose in the top-left corner, a scale bar in the bottom-left corner, and several street names: 'Ann and Poy Butte', 'S Plea', 'Sally Rd', and '16 Trail'. A parking lot with several cars is visible in the upper-middle section.

Temporary
Odor Control
Unit Footprint

90-inch diameter Downtown Tunnel

100 ft
20 m

Temporary Odor Control Unit



- The temporary odor control unit will be placed within the existing wastewater easement.
- It will have require total footprint of 1,500 sq. ft., well within the existing 11,051 sq. ft. wastewater easement.
- The temporary odor control unit will be fenced off to secure the unit and to ensure public safety.