



DESIGN COMMISSION
MONDAY, DECEMBER 15, 2014 6:00 PM
AUSTIN CITY HALL, BOARDS AND COMMISSIONS ROOM 1101
301 W. SECOND STREET, AUSTIN, TEXAS 78701

Current Commission Members

_____ Dean Almy (DA) – Chair	_____ Juan E. Cotera (JC)
_____ Evan Taniguchi (ET) – Vice Chair	_____ James Shieh (JS)
_____ Hope Hasbrouck (HH) – Secretary	_____ Jeannie Wiginton (JW)
	_____ Bart Whatley (BW)
	_____ Jorge E. Rousselin (COA – PDRD) Staff Liaison

AGENDA

Please note: Posted times are for time-keeping purposes only. The Commission may take any item(s) out of order and no express guarantee is given that any item(s) will be taken in order or at the time posted.

	Approx. time
CALL TO ORDER AND ROLL CALL	6:00 PM
1. CITIZEN COMMUNICATION: GENERAL The first five speakers signed up prior to the meeting being called to order will each be allowed a three-minute allotment to address their concerns regarding items not posted on the agenda.	6:00 PM
2. APPROVAL OF MINUTES (Discussion and Possible Action) a. Discussion and possible action on the November 24, 2014 Design Commission meeting minutes. (Jorge Rousselin , COA-PDRD)	6:15 PM
3. NEW BUSINESS (Discussion and Possible Action): a. Briefing on the Capital Metro Project Connect Gateway MetroRail Downtown Multimodal Station. (Javier A. Argüello , Capital Metro).	6:20 PM
4. OLD BUSINESS (Discussion and Possible Action) a. Discussion and possible action on modifications to the 2015 Design Commission meeting schedule. (Jorge Rousselin , COA-PDRD)	6:50 PM
5. COMMITTEE AND LIAISON REPORTS (Discussion and Possible Action) a. Standing Committees Reports; b. Working Group Reports; c. Liaison Reports; d. Appointment of Committee/Working Group members by Chair.	7:00 PM
6. STAFF BRIEFINGS: None	7:15 PM
7. FUTURE AGENDA ITEMS: None	7:15 PM
8. ANNOUNCEMENTS a. Chair Announcements; b. Items from Commission Members; and c. Items from City Staff.	7:20 PM

The City of Austin is committed to compliance with the American with Disabilities Act. Reasonable modifications and equal access to communications will be provided upon request. Meeting locations are planned with wheelchair access. If requiring Sign Language Interpreters or alternative formats, please give notice at least 3 days before the meeting date. Please contact Jorge Rousselin in the Planning and Development Review Department, at jorge.rousselin@austintexas.gov or (512) 974-2975, for additional information. TTY users route through Relay Texas at 711.

Design Commission Committees, Working Groups, and Liaisons

Committees

1. Bylaws/Policies & Procedures Committee: Wiginton (Chair), Cotera, Whatley
2. Executive Committee: Almy (Chair), Taniguchi, Hasbrouck

Working Groups

1. Planning and Urban Design Working Group: Whatley (Chair), Cotera, Shieh
2. Architecture and Development Working Group: Almy (Chair), Taniguchi, Cotera
3. Landscape and Infrastructure Working Group: Hasbrouck (Chair), Wiginton, Almy
4. Public Engagement Working Group: Wiginton (Chair), Taniguchi, Hasbrouck

Design Commission Liaisons

1. Downtown Comm. Liaison / Downtown Austin Plan: Whatley
2. Airport Boulevard Redevelopment Initiative: Whatley

Design Commission Staff Liaison:

Jorge E. Rousselin, Development Services Process Coordinator
Urban Design, Planning and Development Review Department
City of Austin, One Texas Center, 505 Barton Springs Rd., Austin, TX 78704
Phone: (512) 974-2975 ■ E-mail: jorge.rousselin@austintexas.gov

Resources:

1. The Urban Design Guidelines for Austin can be accessed here:
[Urban Design Guidelines for Austin.](#)
2. Design Commission backup may be accessed here: [Design Commission Backup.](#)



**DESIGN COMMISSION
MONDAY, NOVEMBER 24, 2014 6:00 PM
AUSTIN CITY HALL, BOARDS AND COMMISSIONS ROOM 1101
301 W. SECOND STREET, AUSTIN, TEXAS 78701**

Meeting Minutes

Call to order by: D. Almy at 6:02 PM

Roll Call: [J. Wiginton; B. Whatley] not present

1. CITIZEN COMMUNICATION: None

2. APPROVAL OF MINUTES (Discussion and Possible Action):

- a. Discussion and possible action on the October 27, 2014 Design Commission meeting minutes. ([Jorge Rousselin](#), COA-PDRD).

The motion to approve the minutes as corrected made by JC; Second by ET was approved on a vote of [5-0]. [J. Wiginton; B. Whatley not present].

3. NEW BUSINESS (Discussion and Possible Action):

- a. Discussion and possible action on the 2015 Design Commission meeting schedule.

The motion to approve 2015 meeting schedule as drafted made by J. Shieh; Second by H. Hasbrouck was approved on a vote of [5-0]; [J. Wiginton; B. Whatley not present].

4. OLD BUSINESS (Discussion and Possible Action)

- a. Discussion and possible action on crafting of Design Guidelines for infrastructure projects as directed by [City Council Resolution No. 20120816-060](#). (Commissioner Hasbrouck).

Commissioner Hasbrouck presented recommendations on a proposed work plan to complete the IDG addressing a schedule and key milestones to achieve completion. Commissioner Taniguchi was nominated by consensus to coordinate efforts between the IDG and Imagine Austin. Complete streets coordination will be conducted by Chair Almy. The Executive Committee is directed to coordinate integration with the Urban Design Guidelines.

[B. Whatley arrived at 6:35 PM]

The motion to approve work plan as presented made by J. Shieh; Second by D. Almy was approved on a vote of [6-0]. [JW not present].

5. COMMITTEE AND WORKING GROUP REPORTS (Discussion and Possible Action)

- a. Standing Committees Reports: None
- b. Working Group Reports: None
- c. Liaison Reports:
Commissioner Whatley presented a summary of issues discussed at the Downtown Commission: After-hours concrete placement – draft resolution was discussed at the meeting.
- d. Appointment of Committee/Working Group members by Chair: None

6. STAFF BRIEFINGS

Proposed updates to Design Commission Project Review Guidelines for project submittals
By consensus, send to the Planning & Urban Design Working Group for discussion and recommendations.

7. FUTURE AGENDA ITEMS: None

8. ANNOUNCEMENTS

- a. Chair Announcements: None
- b. Items from Commission Members: None
- c. Items from City Staff: None

ADJOURNMENT by consensus at: 6:50 PM.

Capital Metro Project Connect Gateway MetroRail Downtown Multimodal Station



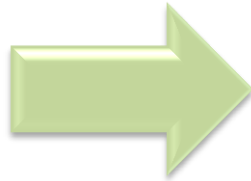
City of Austin – Urban & Transportation
Commission

December, 2014



From Temporary to Permanent

**Downtown
Station**



- Urban Integration with Existing Context and Activity Centers
- Complete Multimodal Integration
- Future Modes – Urban Rail
- Two Platforms Three Tracks Station Configuration (If Possible)
- Station Patron Amenities Upgrade
- Improve Pedestrian Safety and Passenger Experience
- Improve Station - Long Term Terminal Operation Requirements

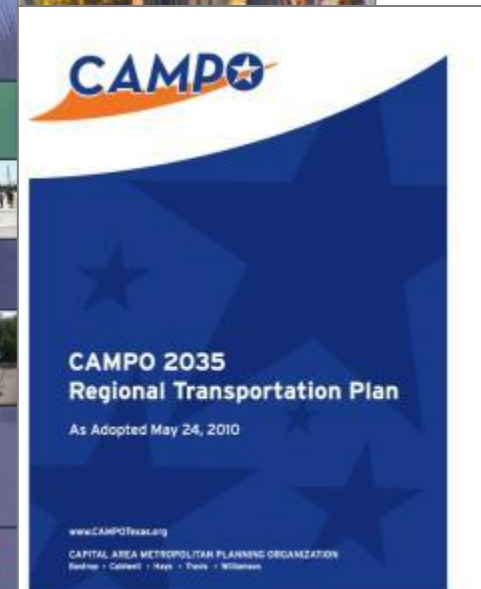
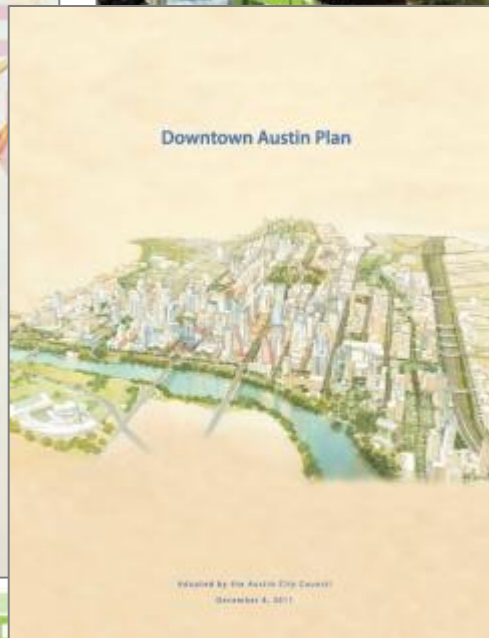
Goals

Take advantage of this opportunity to:

- Effectively collaborate
- Integrate transit users with activities and amenities surrounding the site
- Build a constituency and increase potential funding opportunities (federal, state, and local grants)
- Create a vision for mobility infrastructure that ***works together with the built environment to shape and define a place supports Austin's livability***

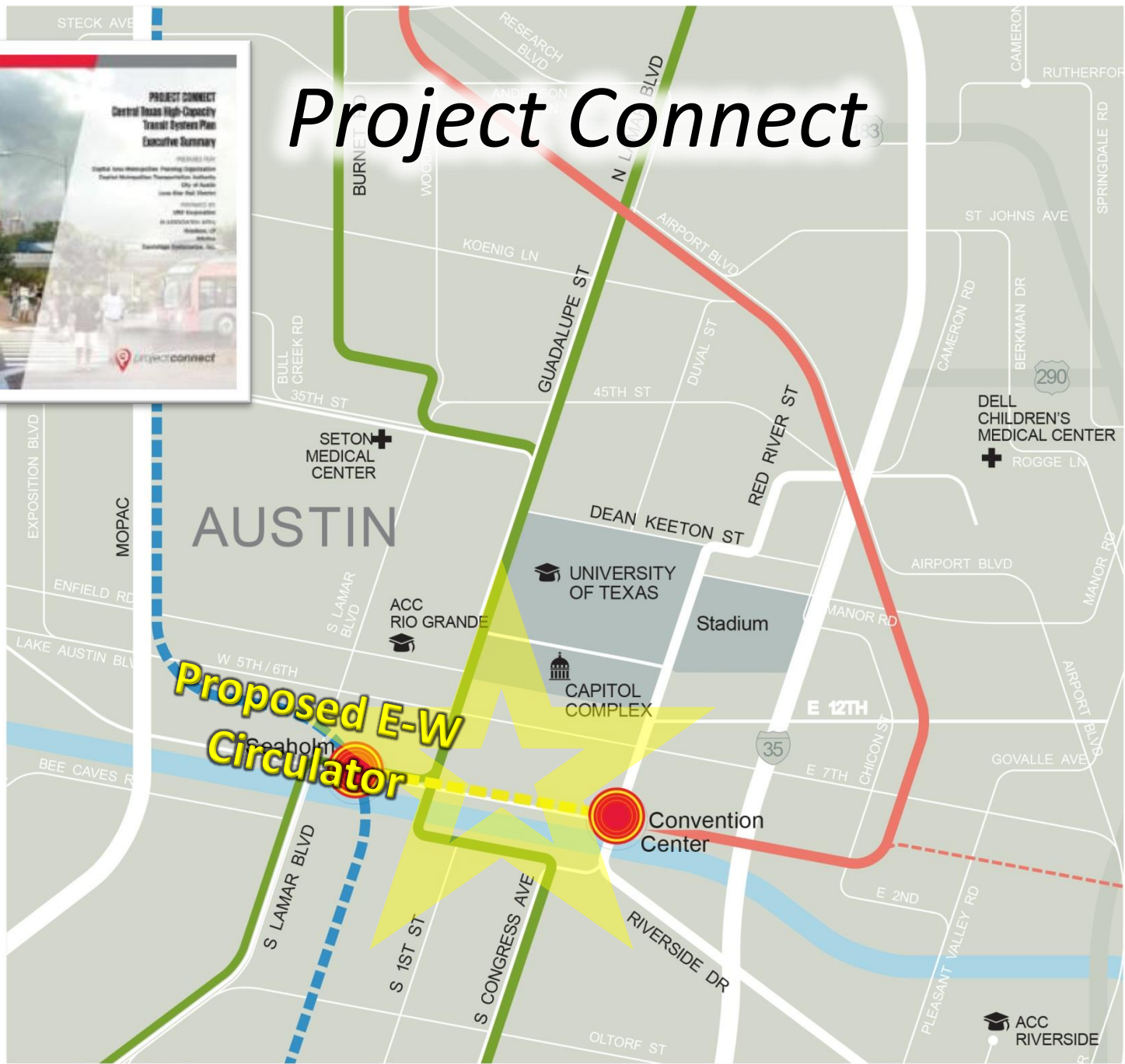


Previous Planning Efforts

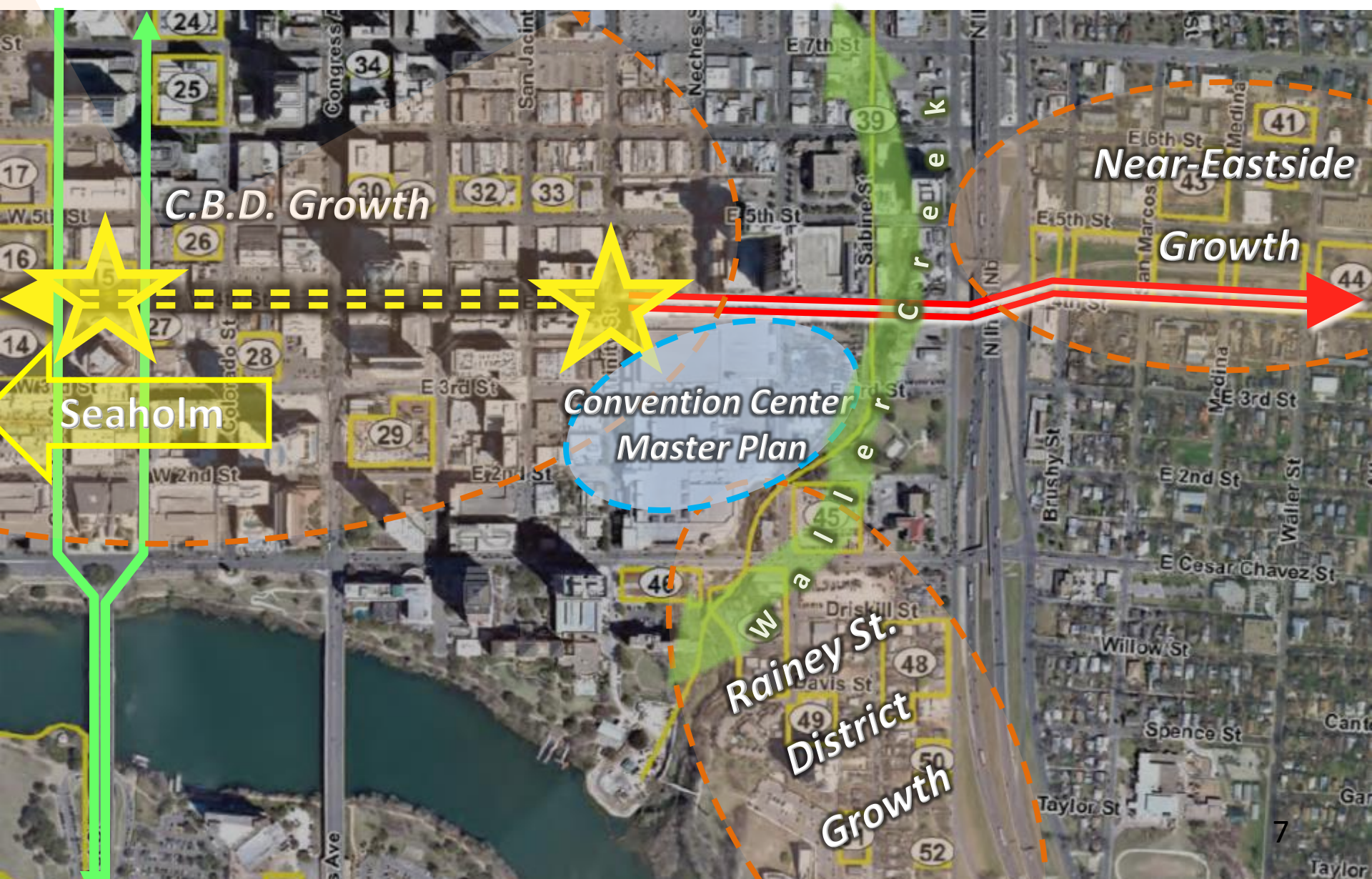




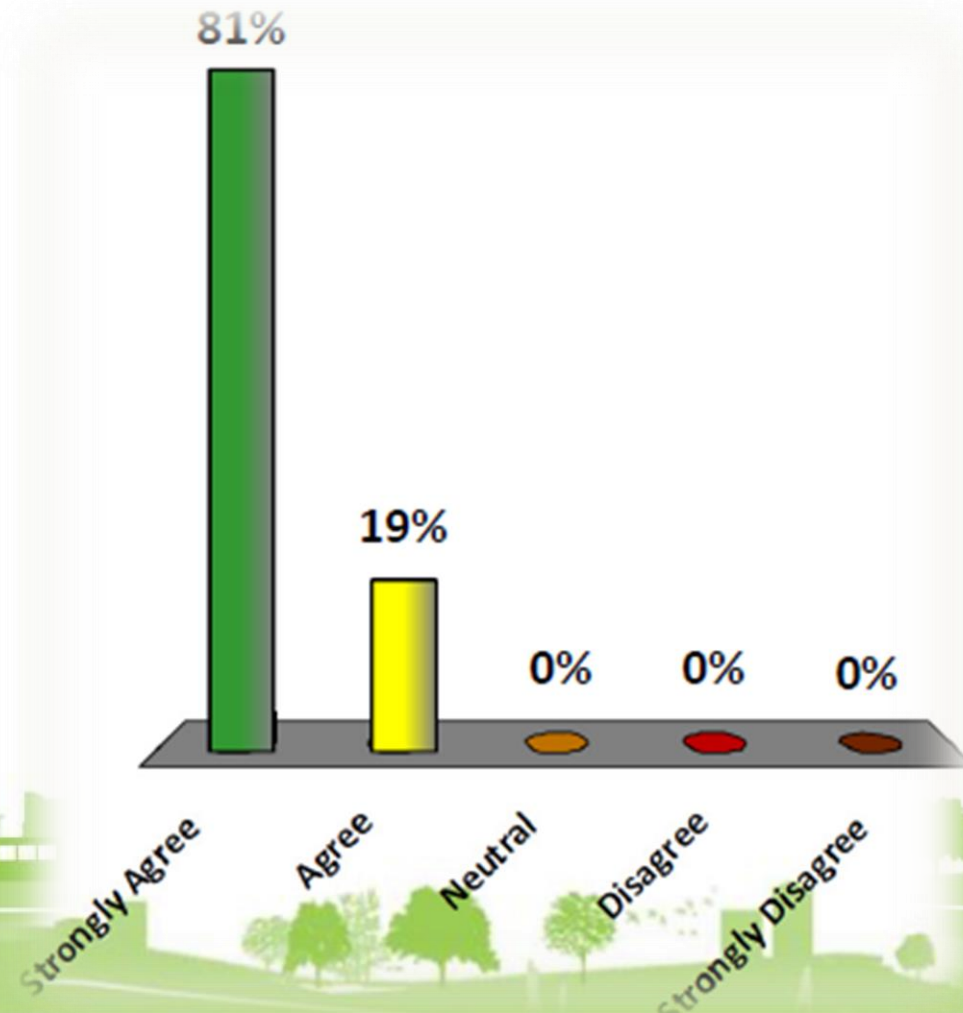
Project Connect



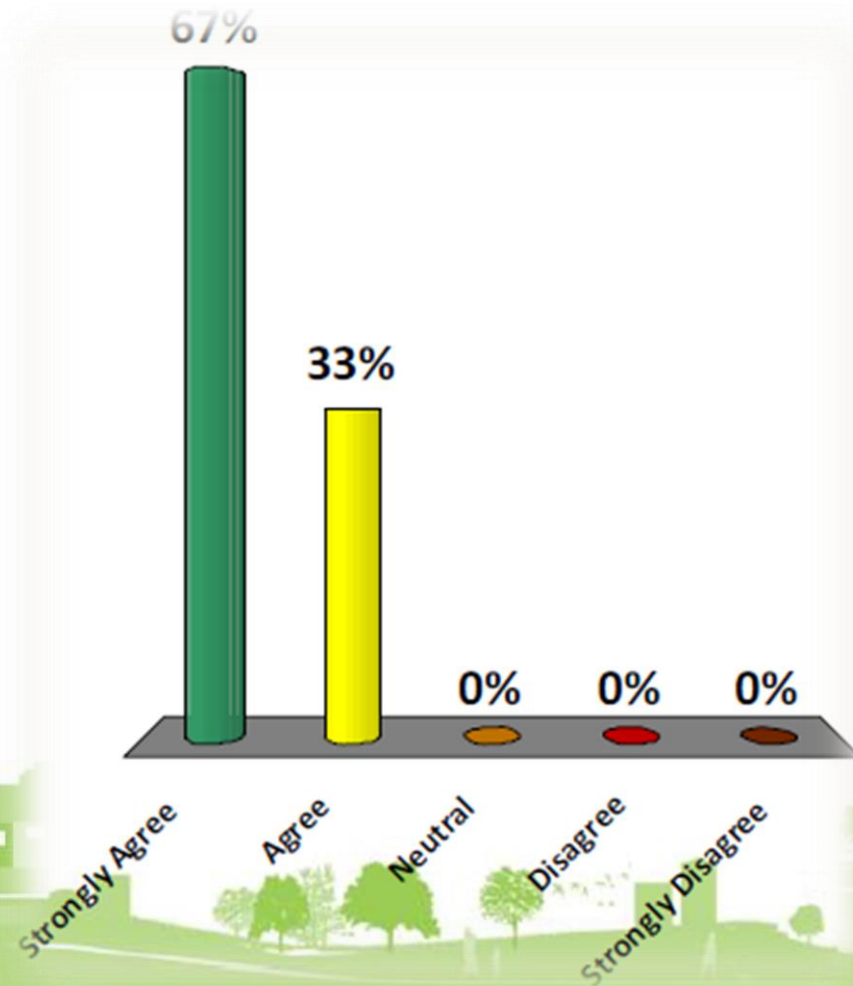
Downtown Growth



“This initiative represents an opportunity to create a more vibrant place in downtown Austin”



“We have a better chance to create a more vibrant place in downtown Austin if we work together”



METRORAIL IMPROVEMENTS



Denton County Transportation Authority

DCTA

Your Future Is Riding On Us.



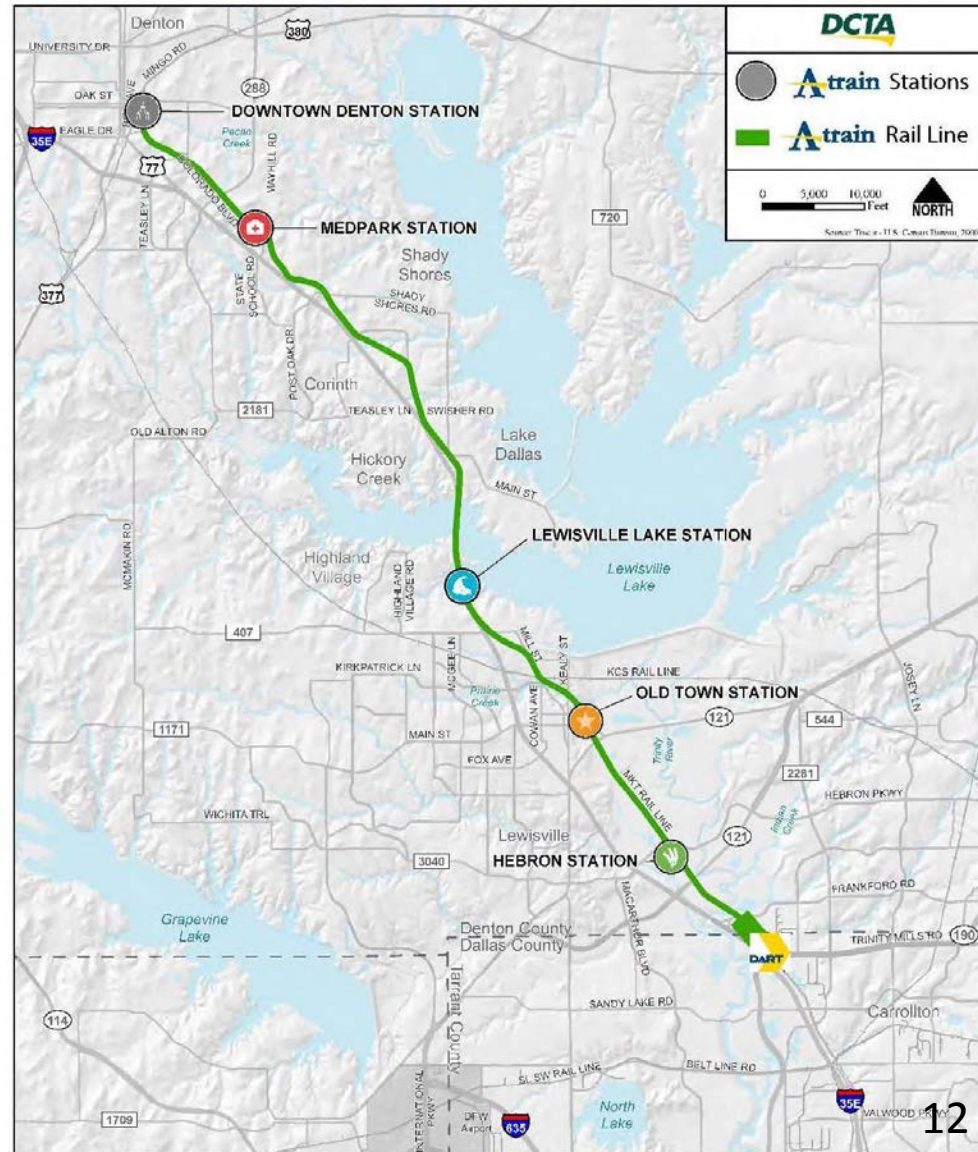
MetroRail Red Line Peer System

Denton County Transportation Authority



Your Future Is Riding On Us.

- **A-train** is a 21-mile regional rail system connecting Denton and Dallas Counties
- Six A-train stations: Denton (2), Highland Village-Lewisville area (3), and DART Trinity Mills Station in Carrollton

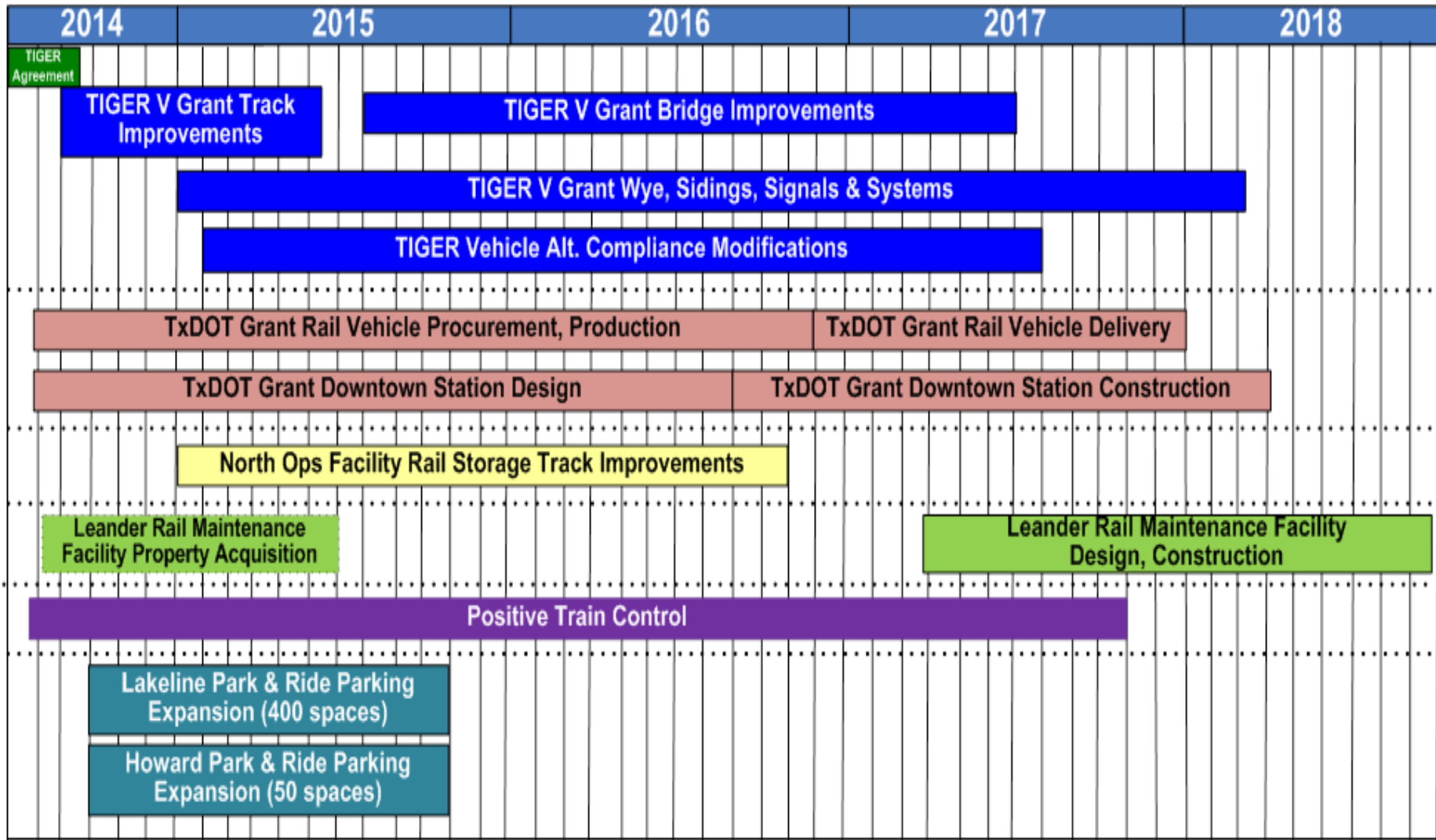


MetroRail Red Line by the Numbers

Performance Measurements	Trinity Railway Express	DCTA A-Train	Capital Metro MetroRail
Operating Expenses (\$)	\$ 25,870,000	\$ 12,258,021	\$ 12,958,185
Ridership	2,092,782	638,423	781,049
Revenue Miles	1,144,466	328,940	279,868
Revenue Hours	49,496	12,238	11,613
Cost Per Passenger (\$)	\$12.36	\$ 19.20	\$ 16.59
Alignment Length (miles)	33.8	21	32



MetroRail Project Timelines



RECAP JULY 25TH WORKSHOP



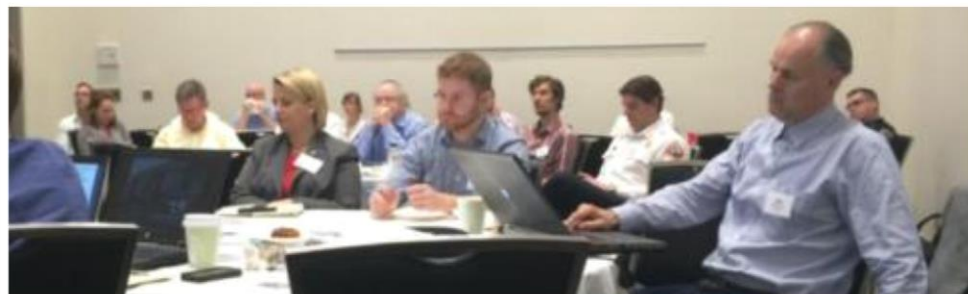
Stakeholder Meeting #2

- Presented architectural design concepts and fire station relocation study
- Excitement about Gateway statements/concepts
- Waller Creek emphasized importance of following design guidelines
- Concerns by Hilton about valet circulation
- Request to look at property east of Red River
- Concern by DAA of station location
- Concern by DAA of maintaining vehicle circulation on 4th



STAKEHOLDER UPDATES





Austin Watershed Protection

Bicycle Advisory Council

Downtown Austin Alliance

Railyard Apartments HOA

315 Sabine St.

Hilton Austin

Waller Creek Conservancy

Planning & Development Review

Austin Fire &
EMS

Austin Transportation Dept



Future Stakeholder Updates

- Downtown Commission
- Design Commission
- Urban Transportation Commission
- 555 Condos
- Marriot Management

Other efforts:

- Block-walking in the area of influence to identify additional stakeholders
- Scheduling a public workshop for January – feedback on concepts
- Launch of project page on Project Connect site
- Outreach to MetroRail riders



UPDATES TO CONCEPTS



1

2

3

Criteria	How well does the solution meet criteria?	How well does the solution meet criteria?	How well does the solution meet criteria?	How well does the solution meet criteria?	How well does the solution meet criteria?
Capital Metro Operational Needs - 3 platform positions, 2 bus bay positions, 2 bike share positions, 2 bus stop positions, 2 bus stop positions, 2 bus stop positions	★★★★★☆☆	★★★★★☆☆	★★★★★☆☆	★★★★★☆☆	★★★★★☆☆
Capital Metro User Experience - ease of transfers, accessibility	☆☆	☆☆	★★★★	★★★	★
Top Constraints (from 5/23 workshop)					
Relocate AFD/EMS Function	★★★★☆	★★★★★☆☆	★★★★★☆☆	★★★	★
Presence of multimodal hub and consider future expansion	★★★★☆	★★★★★☆☆	★★★★★☆☆	★★★★★☆☆	★
4th, 5th, Neches, Red River traffic circulation	★★★★★☆☆	★★★★★☆☆	★★★	★★★★★☆☆	★★★★★☆☆
LAB alignment & pedestrian connectivity to nearby areas (such as Waller Creek)	★★★★★☆☆	★★★★★☆☆	★★★★★☆☆	★★	★★★
Hilton and Convention Center operations, access, and plans	★★★★★☆☆	★★★★★☆☆	★★★★★☆☆	★★★★★☆☆	★★★★★☆☆
Top Functions (from 5/23 workshop)					
Gateway for downtown Austin	★★★	★★★	★★★★★☆☆	★★★★★☆☆	★★★
Pedestrian circulation & connectivity	★★	★★	★★★★★☆☆	★★★★★☆☆	★★★
Front yard for CC/Hilton/flexible diverse use public space	★★	★	★★★★★☆☆	★★★★★☆☆	★★
Public services (restroom, water, etc.)	★★★★★☆☆	★★★★★☆☆	★★★★★☆☆	★★★★★☆☆	★★★★★☆☆
Vehicular circulation & connectivity	★★★★★☆☆	★★★	★★★	★★★★★☆☆	★★★★★☆☆
Other Stakeholder Needs					
Consider connector bridge concepts	★★★★★☆☆	★★★★★☆☆	★★★★★☆☆	★★★★★☆☆	★★★★★☆☆
Allow for valet/parking circulation	★★★★★☆☆	★★★★★☆☆	★★★★★☆☆	★★★★★☆☆	★★★★★☆☆
Maintain pedestrian crossings of 4th Street	★★★★★☆☆	★★★	★★★★★☆☆	★★★★★☆☆	★★★★★☆☆
Maintain Red River service access and circulation	★★★★★☆☆	★★★★★☆☆	★★★★★☆☆	★★★★★☆☆	★★★★★☆☆
Maintain CC & Hilton ingress/egress	★★★★★☆☆	★★★★★☆☆	★★★★★☆☆	★★★★★☆☆	★★★★★☆☆
Maintain recently added event space along 4th Street	★★★★★☆☆	★★★★★☆☆	★★★★★☆☆	★★★★★☆☆	★★★★★☆☆
Noise/vibration between CC & Hilton	★★★★★☆☆	★★★★★☆☆	★★★★★☆☆	★★★★★☆☆	★★★★★☆☆
Consider ongoing operations & maintenance funding for park/plaza	★★★★★☆☆	★★★★★☆☆	★★★★★☆☆	★★★★★☆☆	★★
Maintain Car2Go car sharing operations	★★★★★☆☆	★★★★★☆☆	★★★★★☆☆	★★★★★☆☆	★★★
Maintain B-Cycle bike sharing operations	★★★★★☆☆	★★★★★☆☆	★★★★★☆☆	★★★★★☆☆	★★★

		1	2	3	4	
Criteria	How well does the solution meet criteria?	How well does the solution meet criteria?	How well does the solution meet criteria?	How well does the solution meet criteria?	How well does the solution meet criteria?	
Capital Metro Operational Needs - 3 platform positions, 2 bus bay positions, 2 bus stop positions, 2 bike share stations	★★★★★	★★★★★	★★★★★	★★★★★	★★★★★	★★★★★
Capital Metro User Experience - ease of transfers, accessibility	★★	★★★	★★★★	★★★	★	
Top Constraints (from 5/23 workshop)						
Relocate AFD/EMS Function	★★★★	★★★★★	★★★★★	★★★	★	
Presence of multimodal hub and consider future expansion	★★★★	★★★★★	★★★★★	★★★★	★	
4th, 5th, Neches, Red River traffic circulation	★★★★★	★★★★★	★★★	★★★★	★★★★★	
LAB alignment & pedestrian connectivity to nearby areas (such as Waller Creek)	★★★★	★★★★★	★★★★★	★★	★★★	
Hilton and Convention Center operations, access, and plans	★★★★	★★★★★	★★★★★	★★★★★	★★★★★	★★★★★
Top Functions (from 5/23 workshop)						
Gateway for downtown Austin	★★★	★★★	★★★★★	★★★★	★★	
Pedestrian circulation & connectivity	★★	★★	★★★★★	★★★★	★★	
Front yard for CC/Hilton/flexible diverse use public space	★★	★	★★★★★	★★★★	★★	
Public services (restroom, water, etc.)	★★★★★	★★★★★	★★★★★	★★★★★	★★★★★	
Vehicular circulation & connectivity	★★★★★	★★★	★★★	★★★★	★★★★★	
Other Stakeholder Needs						
Consider connector bridge concepts	★★★★★	★★★★★	★★★★★	★★★★★	★★★★★	★★★★★
Allow for valet/parking circulation	★★★★★	★★★★	★★★★	★★★★	★★★★	★★★★
Maintain pedestrian crossings of 4th Street	★★★★★	★★★	★★★★★	★★★★	★★★★	★★★★
Maintain Red River service access and circulation	★★★★★	★★★★★	★★★★★	★★★★★	★★★★★	★★★★★
Maintain CC & Hilton ingress/egress	★★★★★	★★★★★	★★★★	★★★★★	★★★★★	★★★★★
Maintain recently added event space along 4th Street	★★★★★	★★★★★	★★★★★	★★★★★	★★★★★	★★★★★
Noise/vibration between CC & Hilton	★★★★★	★★★★	★★★★	★★★★	★★★★	★★★★
Consider ongoing operations & maintenance funding for park/plaza	★★★★★	★★★★★	★★★★★	★★★★★	★★★★★	★★
Maintain Car2Go car sharing operations	★★★★★	★★★★★	★★★★★	★★★★★	★★★★★	★★★★
Maintain B-Cycle bike sharing operations	★★★★★	★★★★★	★★★★★	★★★★★	★★★★★	★★★★

		1	2	3	4	5
Criteria	How well does the solution meet criteria?	How well does the solution meet criteria?		How well does the solution meet criteria?	How well does the solution meet criteria?	How well does the solution meet criteria?
		How well does the solution meet criteria?	How well does the solution meet criteria?			
Capital Metro Operational Needs - 3 platform positions, 2 bus bay positions, 2 bus stop positions, 2 bus stop positions	★★★★★	★★★★★	★★★★★	★★★★★	★★★★★	★★★★★
Capital Metro User Experience - ease of transfers, accessibility	★★	★★	★★	★★★★	★★★	★
Top Constraints (from 5/23 workshop)						
Relocate AFD/EMS Function	★★★★	★★★★	★★★★	★★★★	★★★	★
Presence of multimodal hub and consider future expansion	★★★★	★★★★	★★★★	★★★★	★★★★	★
4th, 5th, Neches, Red River traffic circulation	★★★★	★★★★	★★	★★★★	★★★★	★★★★
LAB alignment & pedestrian connectivity to nearby areas (such as Waller Creek)	★★★★	★★★★	★★★★	★★	★★	★★
Hilton and Convention Center operations, access, and plans	★★★★	★★★★	★★★★	★★★★	★★★★	★★★★
Top Functions (from 5/23 workshop)						
Gateway for downtown Austin	★★★	★★★	★★★★	★★★★	★★★★	★★
Pedestrian circulation & connectivity	★★	★★	★★★★	★★★★	★★★★	★★
Front yard for CC/Hilton/flexible diverse use public space	★★	★	★★★★	★★★★	★★★★	★★
Public services (restroom, water, etc.)	★★★★	★★★★	★★★★	★★★★	★★★★	★★★★
Vehicular circulation & connectivity	★★★★	★★	★★★	★★★★	★★★★	★★★★
Other Stakeholder Needs						
Consider connector bridge concepts	★★★★★	★★★★★	★★★★	★★★★	★★★★	★★★★
Allow for valet/parking circulation	★★★★★	★★★★	★★★★	★★★★	★★★★	★★★★
Maintain pedestrian crossings of 4th Street	★★★★	★★★	★★★★	★★★★	★★★★	★★★★
Maintain Red River service access and circulation	★★★★★	★★★★★	★★★★	★★★★	★★★★	★★★★
Maintain CC & Hilton ingress/egress	★★★★★	★★★★★	★★★★	★★★★	★★★★	★★★★
Maintain recently added event space along 4th Street	★★★★★	★★★★★	★★★★	★★★★	★★★★	★★★★
Noise/vibration between CC & Hilton	★★★★	★★★★	★★★★	★★★★	★★★★	★★★★
Consider ongoing operations & maintenance funding for park/plaza	★★★★	★★★★	★★★★	★★★★	★★★★	★★
Maintain Car2Go car sharing operations	★★★★★	★★★★★	★★★★	★★★★	★★★★	★★★★
Maintain B-Cycle bike sharing operations	★★★★★	★★★★★	★★★★	★★★★	★★★★	★★★★

1

2

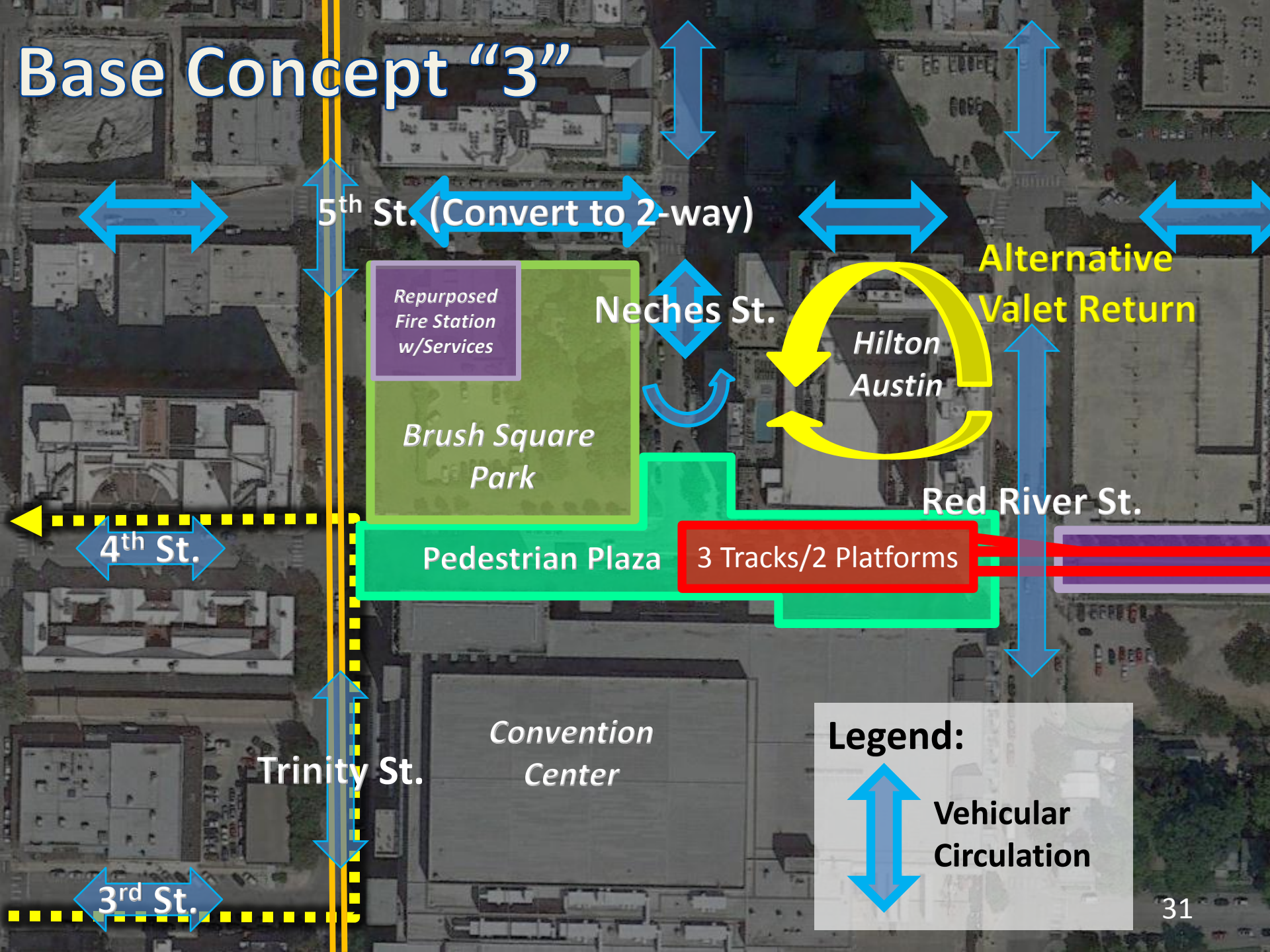
3

4

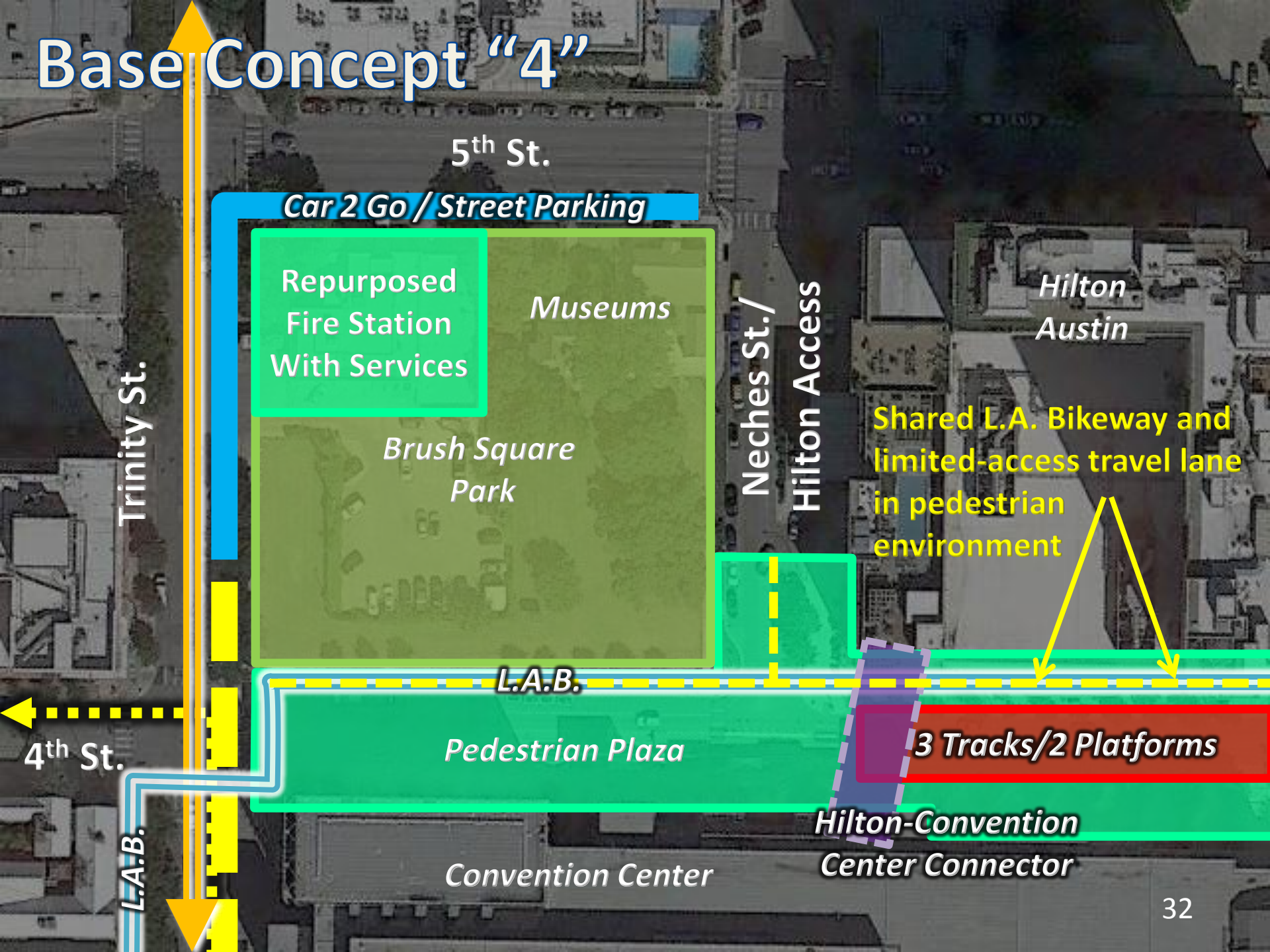
5

Criteria	How well does the solution meet criteria?	How well does the solution meet criteria?	How well does the solution meet criteria?	How well does the solution meet criteria?	How well does the solution meet criteria?
Capital Metro Operational Needs - 3 platform positions, 2 bus bay positions, 2 bus stop positions, 2 bike share positions, 2 car share positions, 2 car share positions, 2 car share positions	★★★★★	★★★★★	★★★★★	★★★★★	★★★★★
Capital Metro User Experience - ease of transfers, accessibility	★★	★★★	★★★★	★★★	★
Top Constraints (from 5/23 workshop)					
Relocate AFD/EMS Function	★★★★	★★★★★	★★★★★	★★★	★
Presence of multimodal hub and consider future expansion	★★★★	★★★★★	★★★★★	★★★★★	★
4th, 5th, Neches, Red River traffic circulation	★★★★★	★★★★★	★★★	★★★★★	★★★★★
LAB alignment & pedestrian connectivity to nearby areas (such as Waller Creek)	★★★★★	★★★★★	★★★★★	★★	★★★
Hilton and Convention Center operations, access, and plans	★★★★★	★★★★★	★★★★★	★★★★★	★★★★★
Top Functions (from 5/23 workshop)					
Gateway for downtown Austin	★★★	★★★	★★★★★	★★★★★	★★★
Pedestrian circulation & connectivity	★★	★★	★★★★★	★★★★★	★★★
Front yard for CC/Hilton/flexible diverse use public space	★★	★	★★★★★	★★★★★	★★
Public services (restroom, water, etc.)	★★★★★	★★★★★	★★★★★	★★★★★	★★★★★
Vehicular circulation & connectivity	★★★★★	★★★	★★★	★★★★★	★★★★★
Other Stakeholder Needs					
Consider connector bridge concepts	★★★★★	★★★★★	★★★★★	★★★★★	★★★★★
Allow for valet/parking circulation	★★★★★	★★★★★	★★★★	★★★★	★★★★★
Maintain pedestrian crossings of 4th Street	★★★★★	★★★	★★★★★	★★★★★	★★★★★
Maintain Red River service access and circulation	★★★★★	★★★★★	★★★★★	★★★★★	★★★★★
Maintain CC & Hilton ingress/egress	★★★★★	★★★★★	★★★★★	★★★★★	★★★★★
Maintain recently added event space along 4th Street	★★★★★	★★★★★	★★★★★	★★★★★	★★★★★
Noise/vibration between CC & Hilton	★★★★★	★★★★★	★★★★★	★★★★★	★★★★★
Consider ongoing operations & maintenance funding for park/plaza	★★★★★	★★★★★	★★★★★	★★★★★	★★
Maintain Car2Go car sharing operations	★★★★★	★★★★★	★★★★★	★★★★★	★★★
Maintain B-Cycle bike sharing operations	★★★★★	★★★★★	★★★★★	★★★★★	★★★

Base Concept "3"



Base Concept "4"



5th St.

Car 2 Go / Street Parking

Repurposed
Fire Station
With Services

Museums

Brush Square
Park

Neches St./
Hilton Access

Hilton
Austin

Shared L.A. Bikeway and
limited-access travel lane
in pedestrian
environment

L.A.B.

Pedestrian Plaza

3 Tracks/2 Platforms

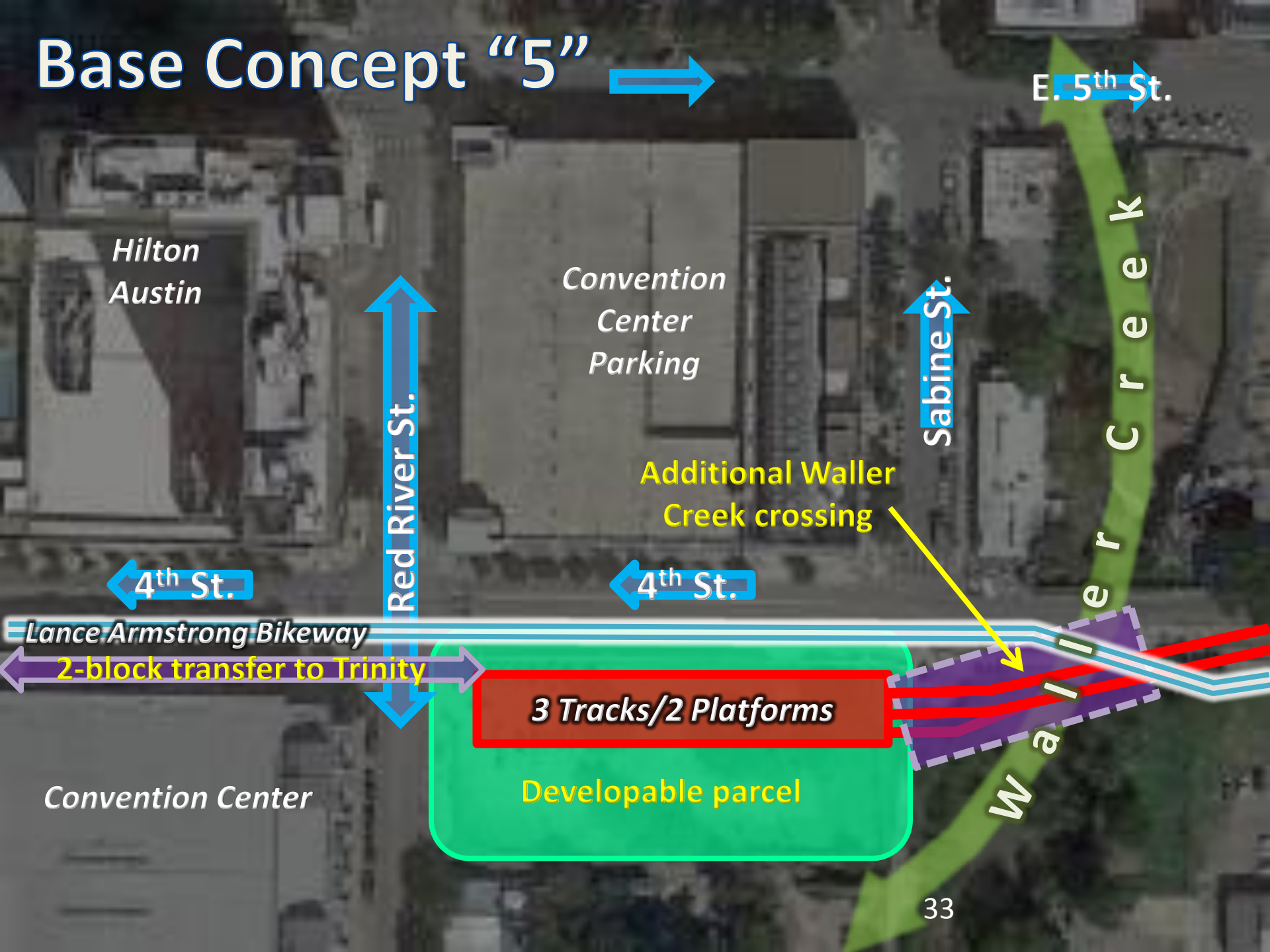
Hilton-Convention
Center Connector

Convention Center

4th St.

L.A.B.

Base Concept "5" →



E. 5th St.

Hilton
Austin

Convention
Center
Parking

Sabine St.

Additional Waller
Creek crossing

4th St.

4th St.

Lance Armstrong Bikeway

2-block transfer to Trinity

3 Tracks/2 Platforms

Developable parcel

Convention Center

*Elements of Concepts 3 and 4
address the stakeholder-defined
criteria best and will be
advanced to the next phase*

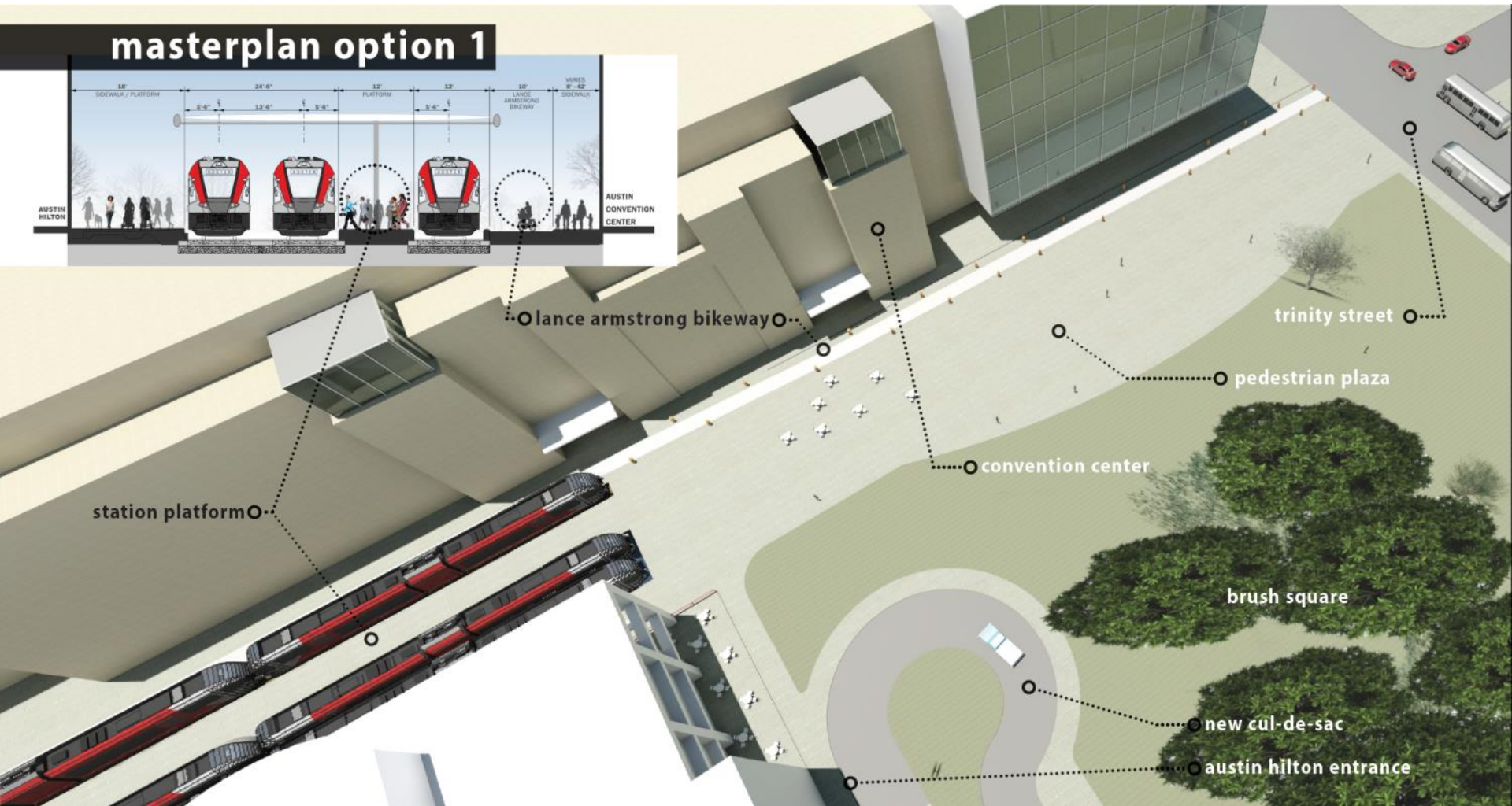


Upcoming Design Phase - Technical Evaluation

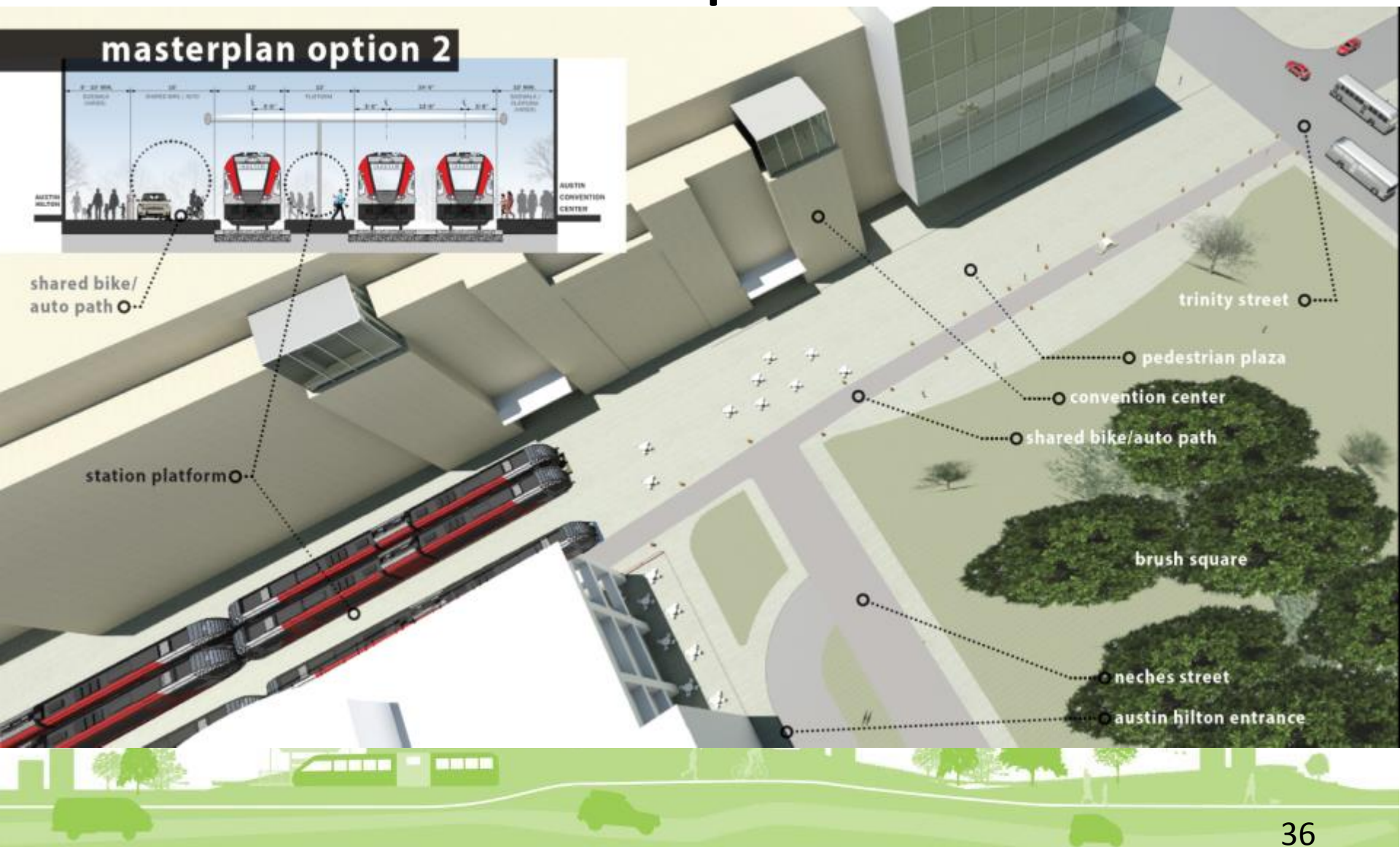
- Engage the public and additional stakeholders
- Identify any fatal flaws
- Incorporate stakeholder feedback as appropriate
- Develop detailed design (30% level)
- Environmental review and approval as needed
- Develop cost estimates and confirm meets budget



Concept "3"



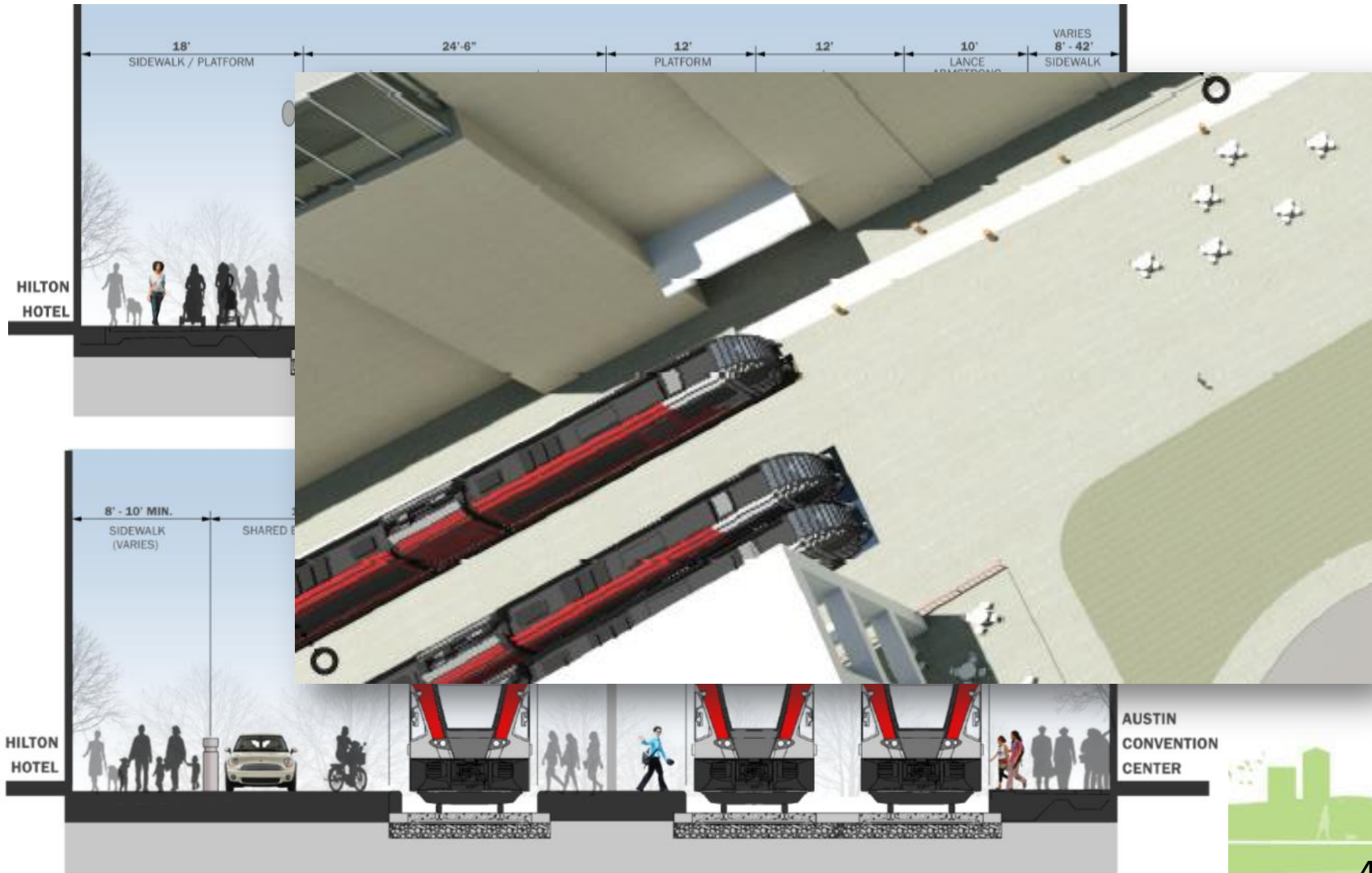
Concept "4"



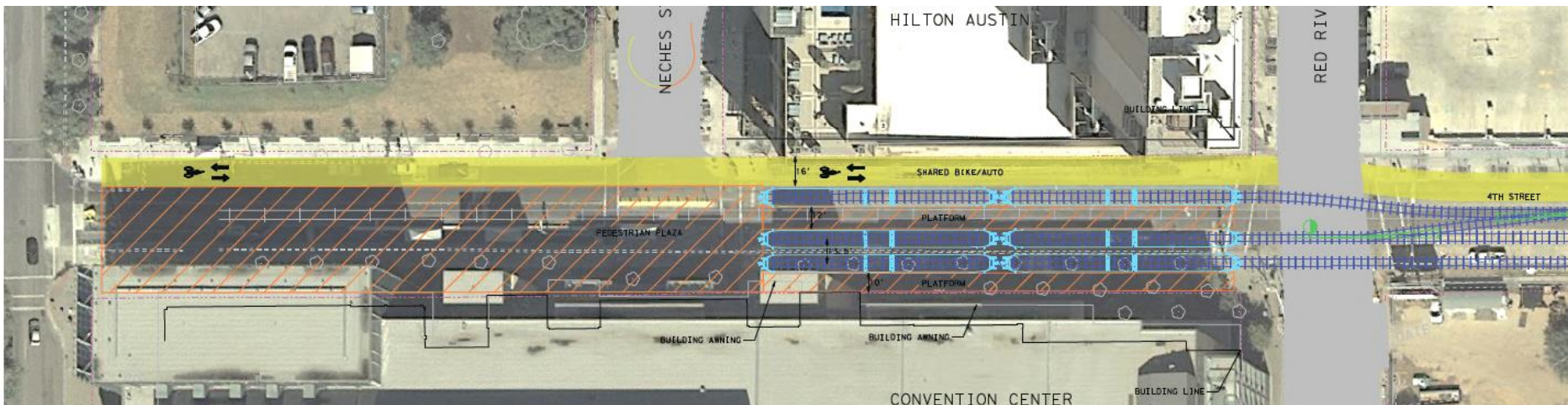
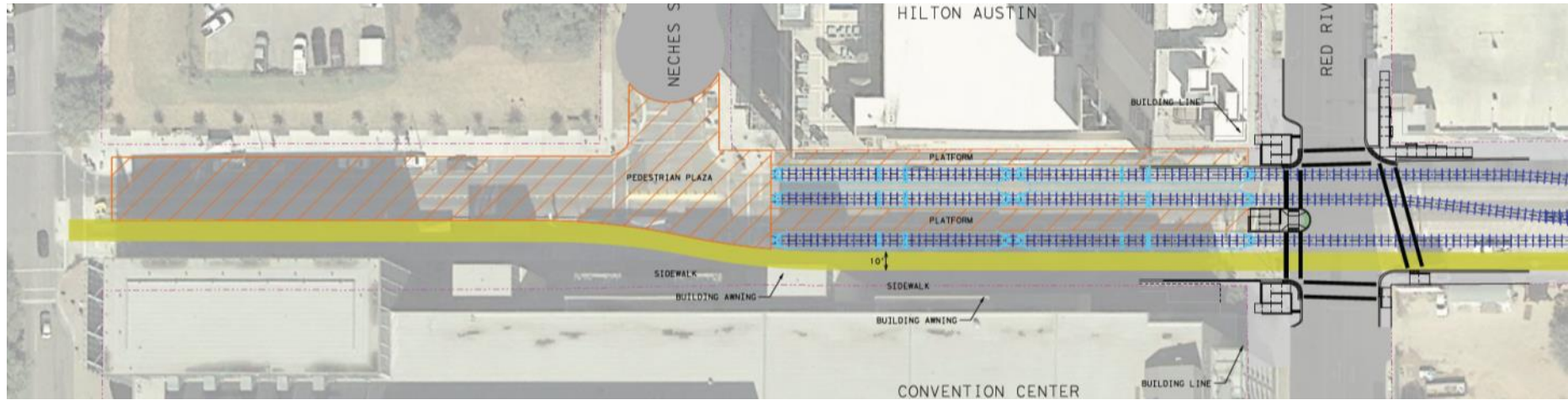
DESIGN CONSIDERATIONS



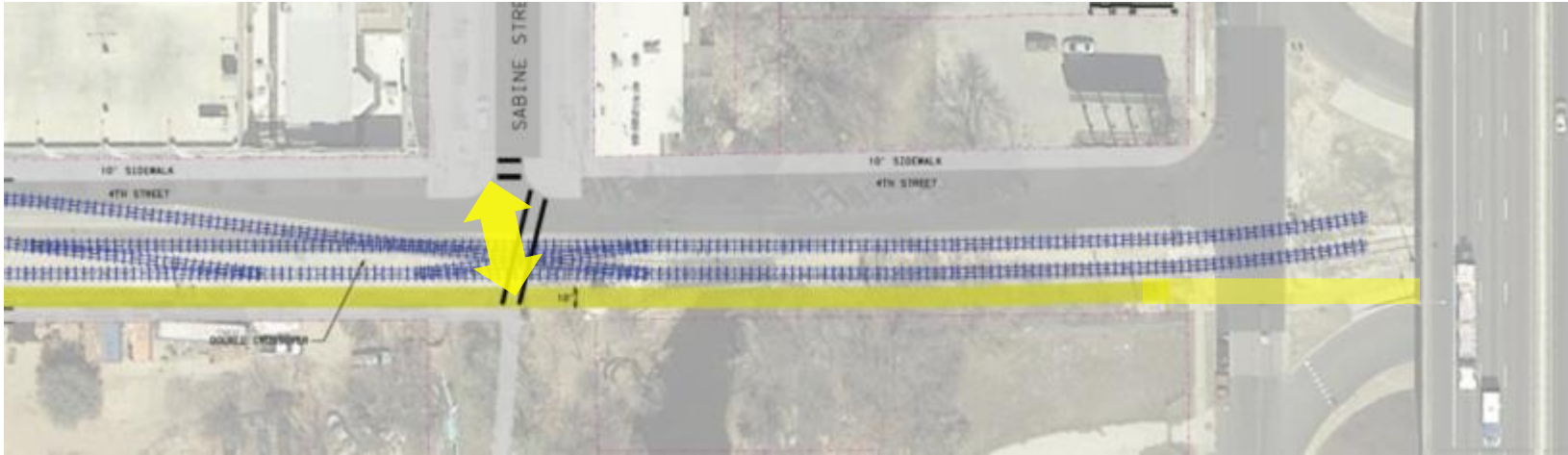
Details – Lowering tracks



Details



Details



Details – Waller Creek & Sabine

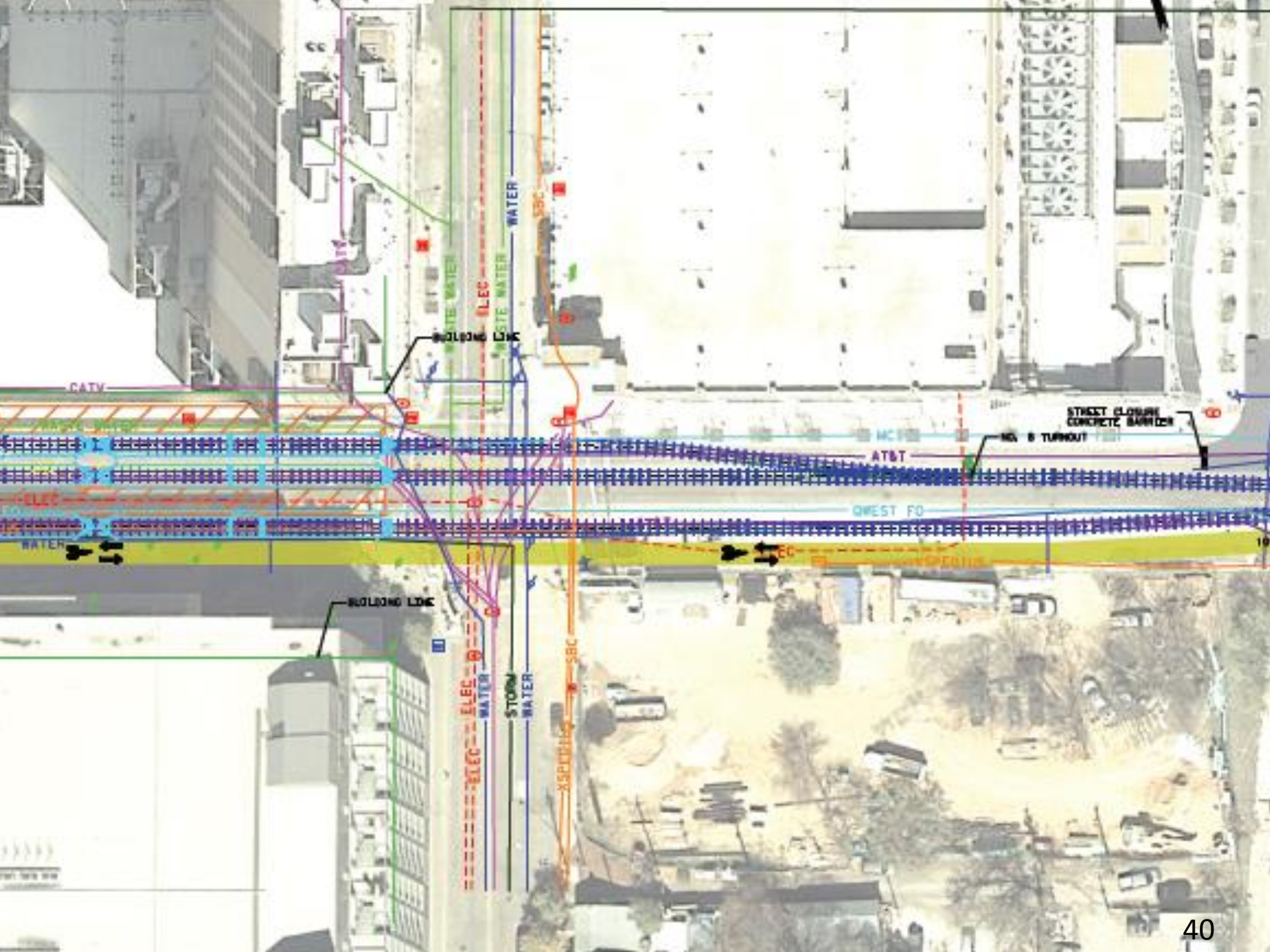
- Existing rail bridge can remain as part of a phased approach
- R/W width is sufficient to add new bridge for 2nd track, roadway lane, and sidewalk
- Future phase of work could replace old rail bridge and L.A.B. bridge
- Sabine/4th Rail-Trail crossing practice warning devices



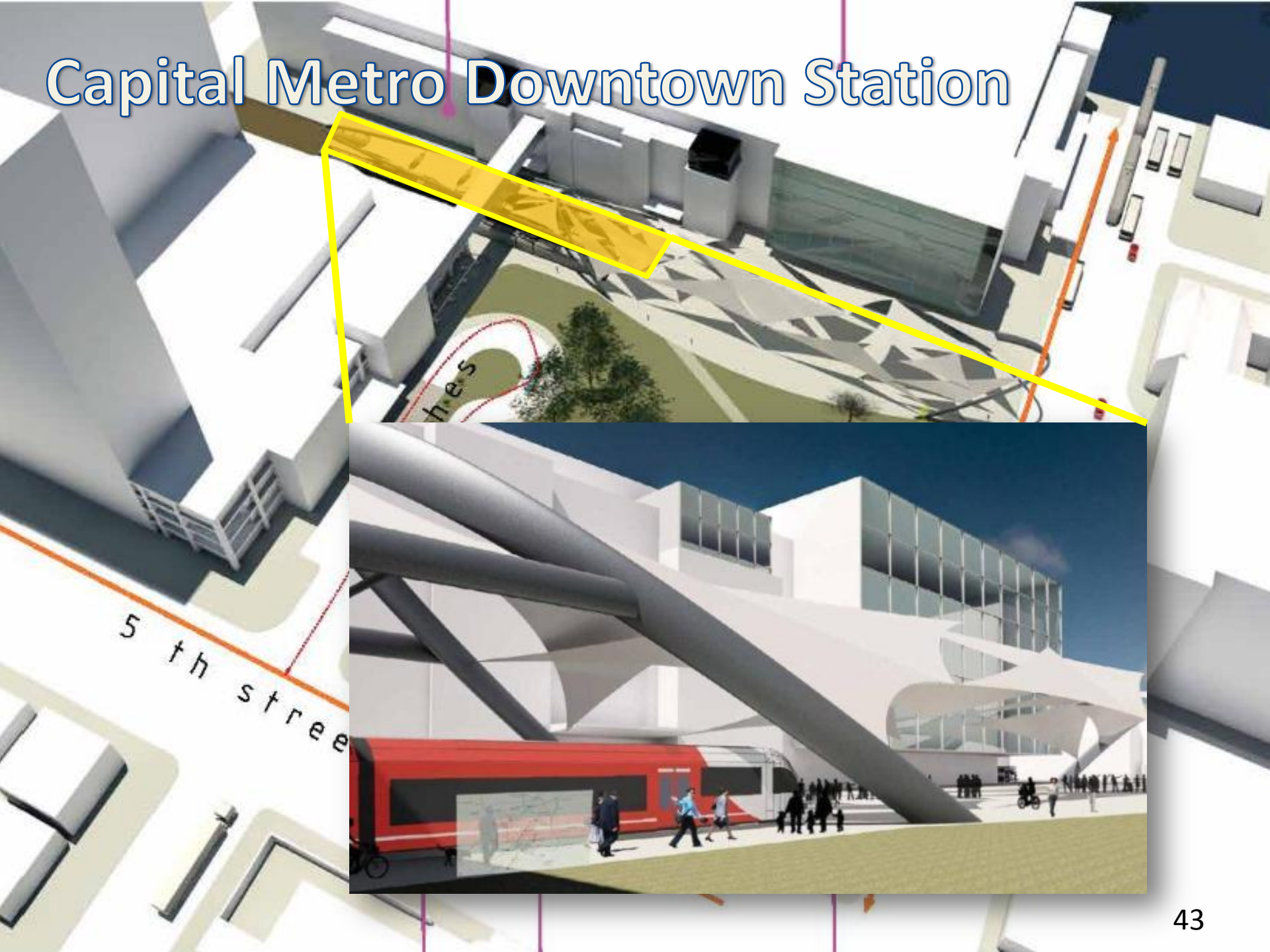
Details - Utilities

- To define magnitude cost allowance
- Records research & Austin Utility Location Coordination Committee (AULCC)





Capital Metro Downtown Station



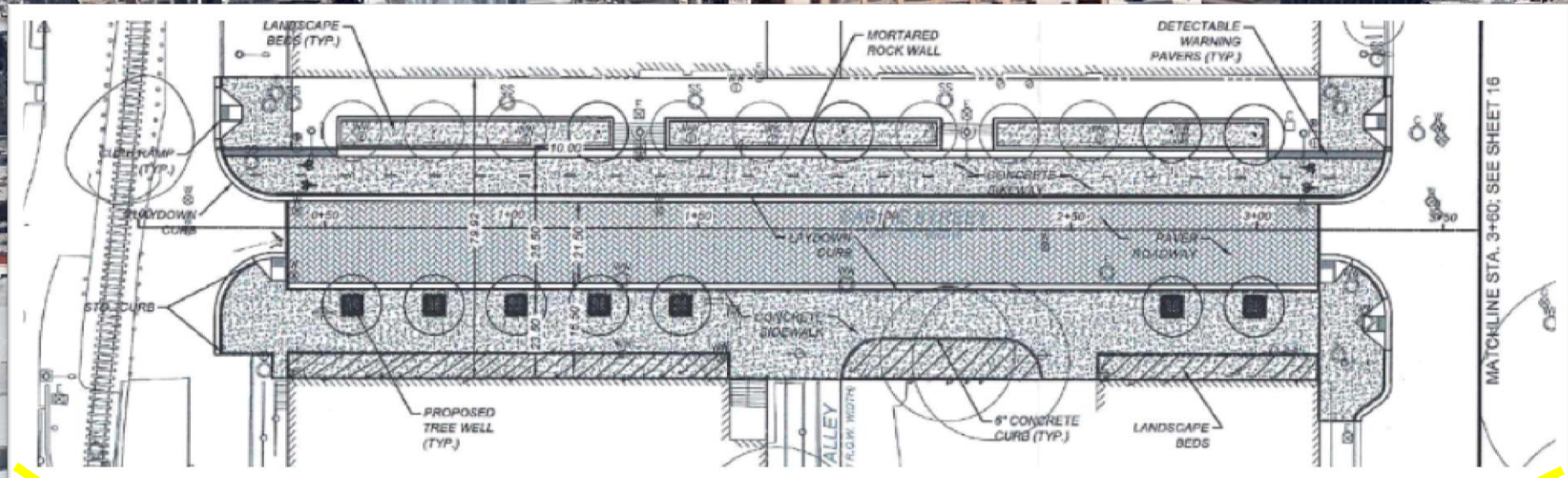
Brush Square



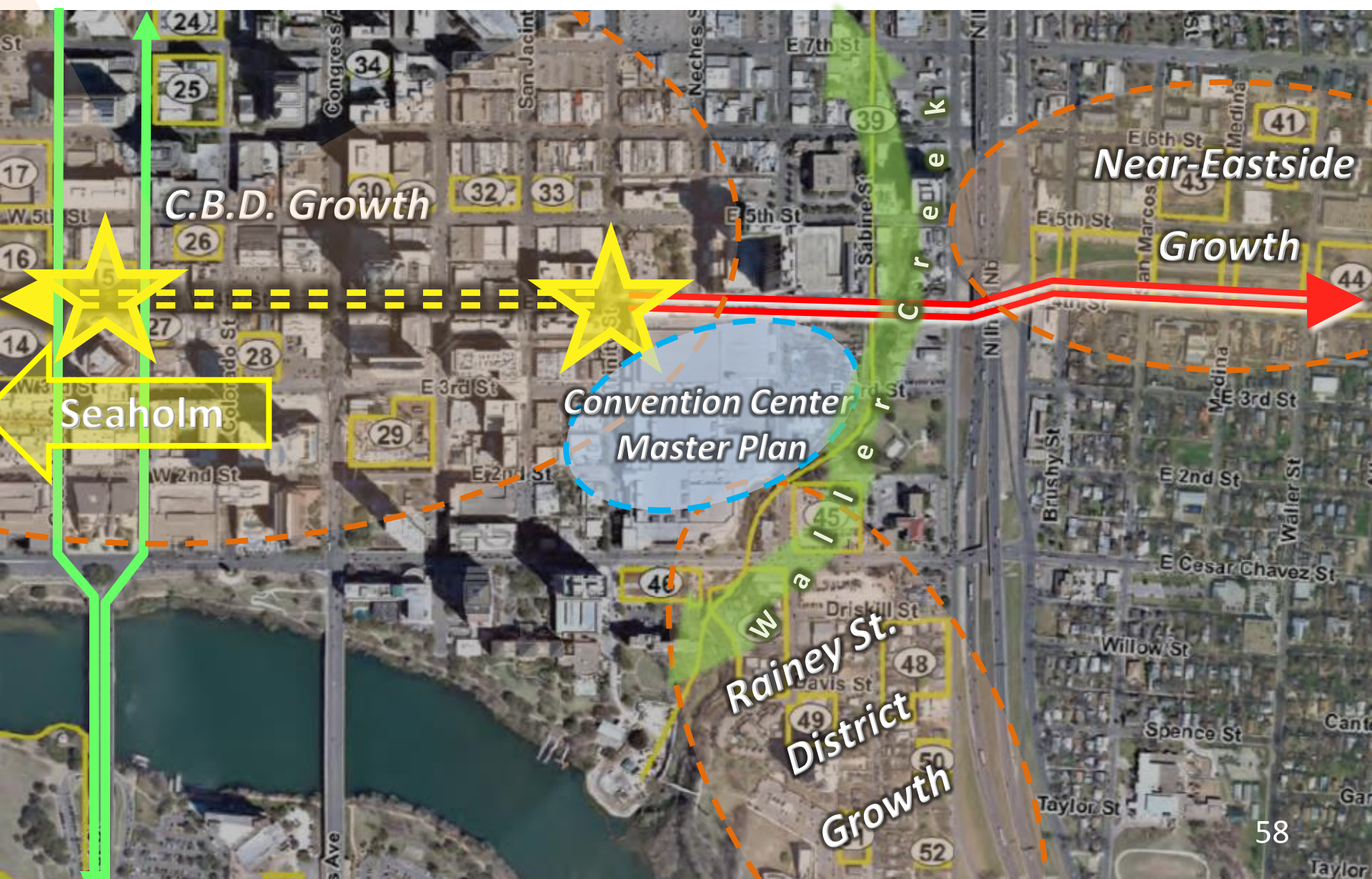
Hilton-Convention Center Connector



Sabine St. Promenade



Our urban fabric... the vision

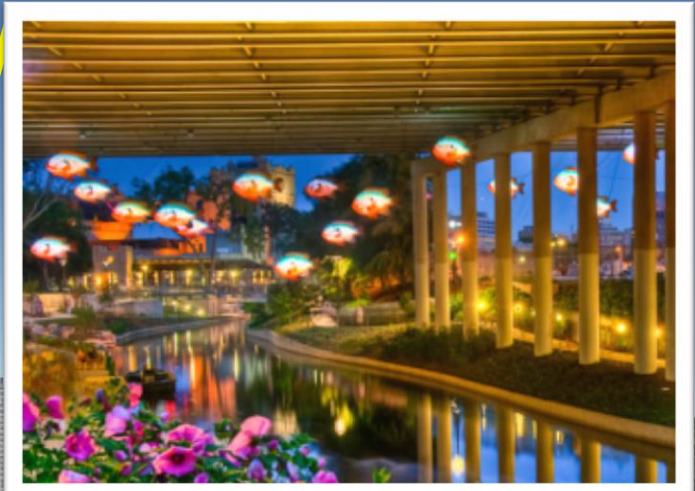




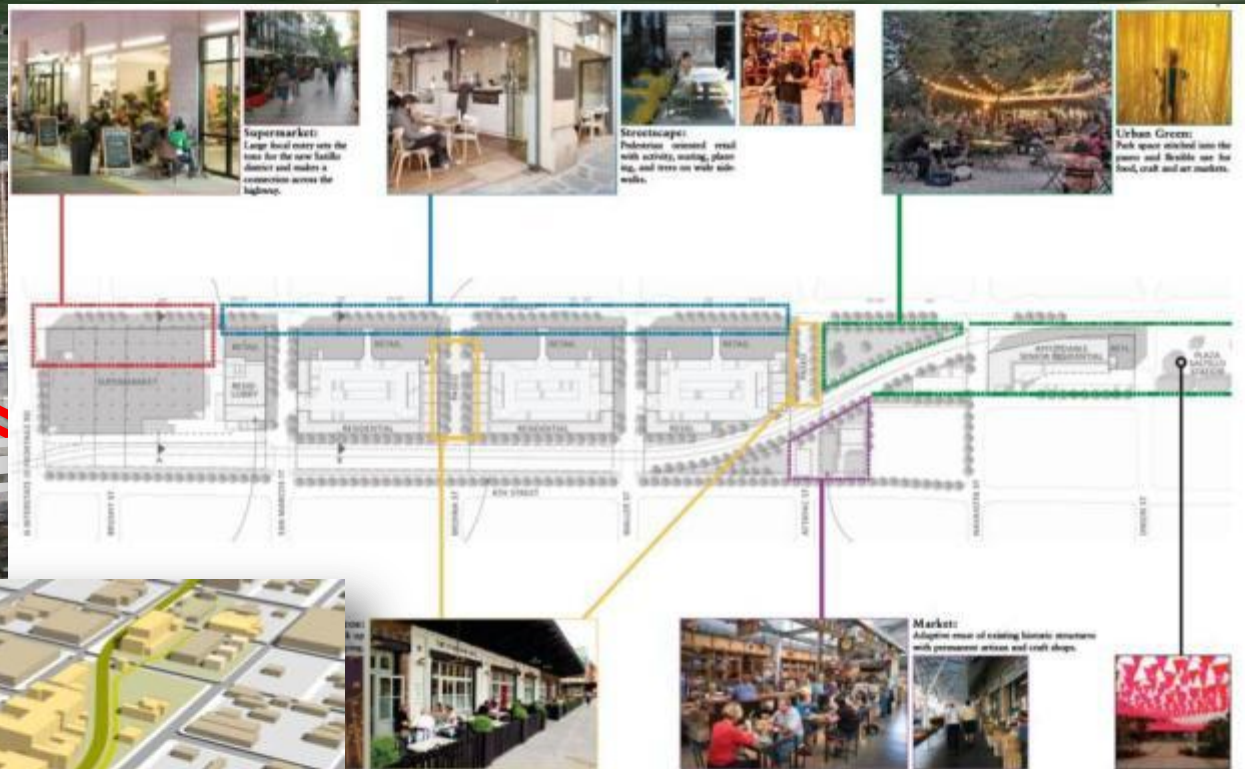
Waller Creek



Reconnecting East to West

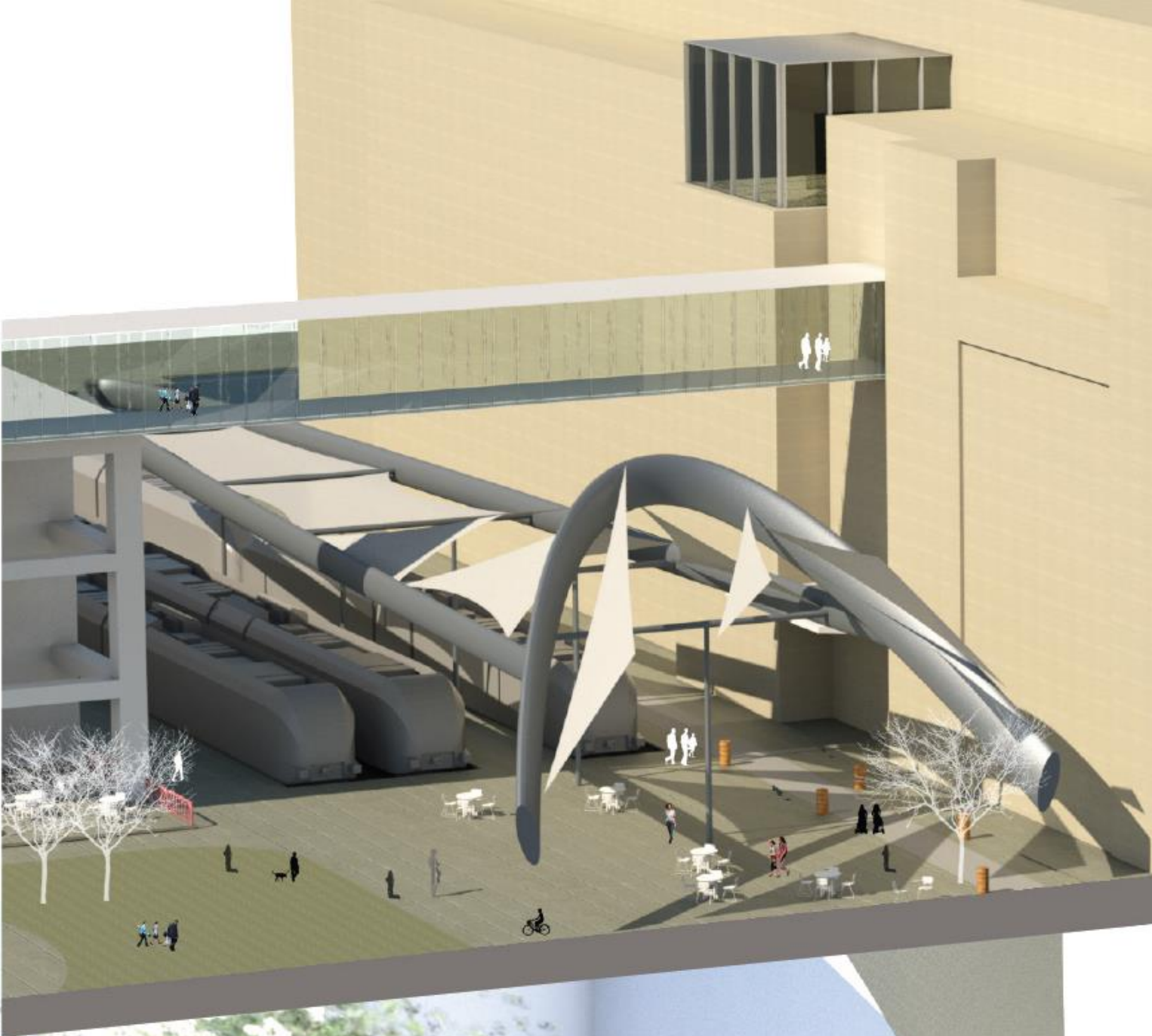


Plaza Saltillo





section 3d masterplan option-2



section 3d masterplan option-1

*What other items should be
considered during next design
phase?*



Implementation Timeline

PC - MetroRail / Downtown Station - Gateway Initiative

Preliminary Time Line & Expenditures

2014			2015				2016				2017				2018		
Q2	Q3	Q4	Q1	Q2	Q3	Q4	Q1	Q2	Q3	Q4	Q1	Q2	Q3	Q4	Q1	Q2	Q3
10 % Project Definition - 197 K																	
		30 K															
		Public Outreach - 30 K															
		10 K	90 K														
		A&E / Procurement - 10 k															
		(Design Competition) - 90 K															
			40 K	40 K													
			Environmental Review (CE) - 80 K														
			Public Outreach - 30 K														
			100 K	300 K	600 K	700 K	800 K	300 K									
			Final Design - 2.8 M														
										2 M	3 M	3.5 M	4.5 M	4.5 M			
										Station Construction - 22.2 M							
										1 M	2 M	2.5 M	3 M	2 M			
										Transit Plaza - Place Making							
													600 K	600 K			

March/April - 2018





Thank you!





2015 Meeting Schedule for the Design Commission

The Commission shall meet monthly as specified below. All regular meetings are held on the 4th Monday of every month beginning at 6:00 PM in the Boards and Commissions Room 1101 at City Hall 301 West 2nd Street, Austin, TX 78701 unless specified otherwise.

MEETING DATES*	CANCELLED DATE
January 26, 2015	
February 23, 2015	
March 23, 2015	
April 27, 2015	
May 26, 2015 ** May 27, 2015**	May 25, 2015
June 22, 2015	
July 27, 2015	
August 24, 2015	
September 28, 2015	
October 26, 2015	
November 23, 2015	
December 14, 2015**	December 28, 2015

* All backup materials are due ten (10) days prior to the meeting.

** This meeting may be rescheduled to a different venue.

Design Commission Staff Liaison:

Jorge E. Rousselin, Development Services Process Coordinator
 Urban Design, Planning and Development Review Department
 City of Austin, One Texas Center, 505 Barton Springs Rd., Austin, TX 78704
 Phone: (512) 974-2975 ■ E-mail: jorge.rousselin@austintexas.gov

The Urban Design Guidelines for Austin can be accessed at the following location:

[Urban Design Guidelines for Austin](#)

Design Commission backup may be accessed at the following location:

[Design Commission Backup](#)

The City of Austin is committed to compliance with the American with Disabilities Act. Reasonable modifications and equal access to communications will be provided upon request. Meeting locations are planned with wheelchair access. If requiring Sign Language Interpreters or alternative formats, please give notice at least 3 days before the meeting date. Please contact Annie Pennie in the Planning and Development Review Department, at jorge.rousselin@austintexas.gov or at (512) 974-2975, for additional information. TTY users route through Relay Texas at 711.