

LEGEND

- △ CALCULATED POINT
- 1/2" IRON ROD FOUND
- () RECORD DATA
- DRTCT DEED RECORDS
- TRAVIS CO TX
- PRCTC PLAT RECORDS
- TRAVIS CO TX
- AREA OF EASEMENT

E. 15 th ST.
(100' R.O.W.)

SCALE:
1"=30'



ORIGINAL CITY
OF AUSTIN
BLOCK 169

VACATED ALLEY
VOL. 4575, PG. 951
DRTCT

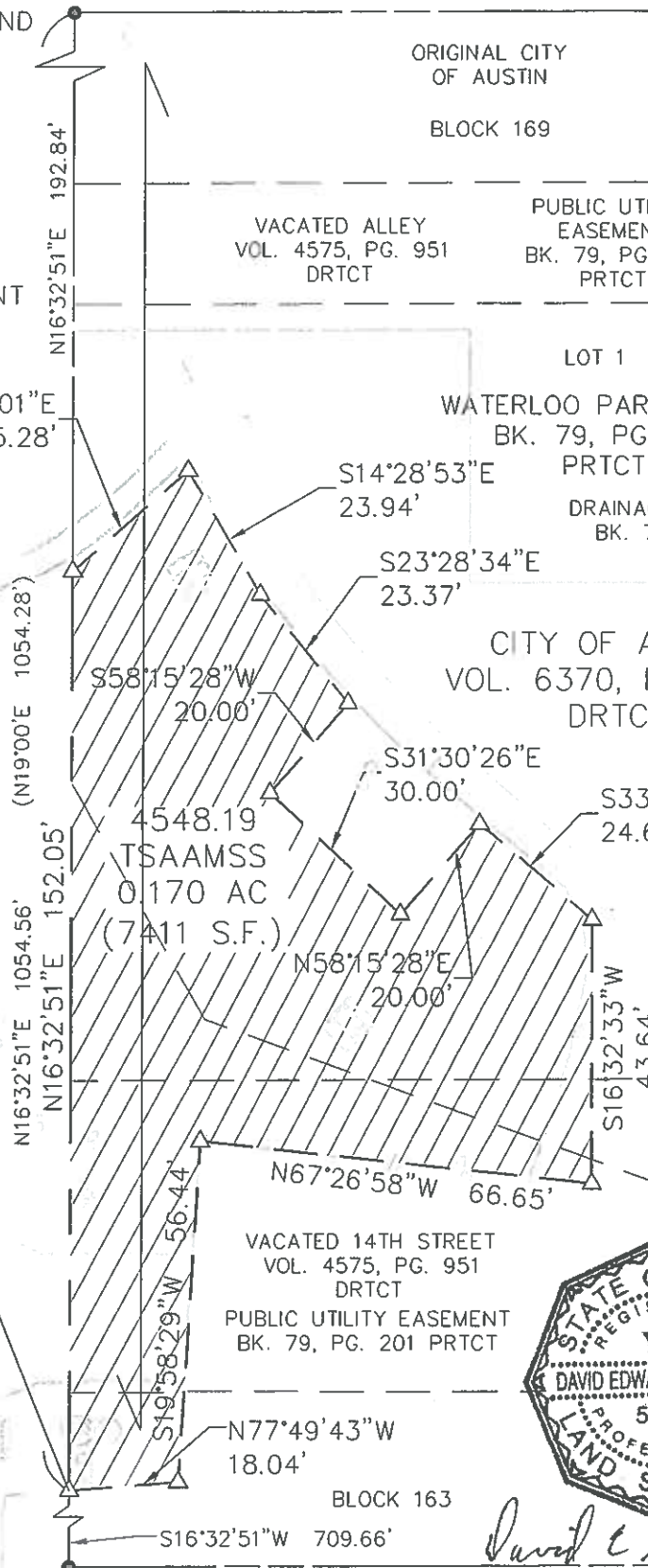
PUBLIC UTILITY
EASEMENT
BK. 79, PG. 201
PRCTC

LOT 1
WATERLOO PARK SEC. 1
BK. 79, PG. 201
PRCTC

DRAINAGE EASEMENT
BK. 79, PG. 201
PRCTC

CITY OF AUSTIN
VOL. 6370, PG. 1342
DRTCT

LOT 2



LOT 7

PRCTC



VACATED
ALLEY

ORIGINAL
CITY OF
AUSTIN

BLOCK
170

LOT 6

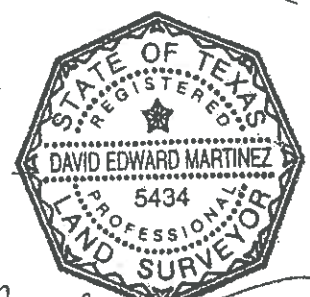
TRINITY ST.
(80' R.O.W.)

POINT OF BEGINNING
N=10073279.32
E=3116306.57
(GRID COORDINATES)

COORDINATE BASIS: THE GRID
COORDINATES SHOWN HEREON ARE TEXAS
STATE PLANE, CENTRAL ZONE NAD83
(CORS 2011) (EPOCH: 2010.0000). THESE
COORDINATES WERE ESTABLISHED FROM
CONTROL POINT 13, GRID COORDINATES
N=10072330.11, E=3116780.08 AND
CONTROL POINT 16, GRID COORDINATES
N=10072432.99, E=3113567.81. FOR
SURFACE COORDINATES MULTIPLY GRID
COORDINATES BY A SURFACE
ADJUSTMENT FACTOR (SAF) OF 1.00006.
ALL DISTANCES SHOWN ARE SURFACE
DISTANCES.

VACATED 14TH STREET
VOL. 4575, PG. 951
DRTCT

PUBLIC UTILITY EASEMENT
BK. 79, PG. 201 PRCTC



E. 12 th ST. (120' R.O.W.)

David E. Martinez
07/18/13



305 East Huntland Drive
Suite 200
Austin, Texas 78752
p: 512.453.0767
f: 512.453.1734

SKETCH TO ACCOMPANY
FIELD NOTES

COA RECLAIMED MAINS
AUSTIN, TEXAS

DATE: 18 JUL 13
JOB NO: 44205A
FILE: TSAAMSS