



# Sustainable Food System Update



OFFICE OF  
**SUSTAINABILITY**

CITY OF AUSTIN

# Agenda

## Progress Update

- Metrics Development
- Gap Analysis
- Food Portal Launch

## What's Next

## Input & Discussion

- State of the Food System Report



OFFICE OF  
SUSTAINABILITY

CITY OF AUSTIN

# Progress Update

## Metrics Development:

- More than 150 meetings with stakeholders
- Conducted a survey to identify metrics:
  - Growing food
  - Selling food
  - Eating food
  - Food recovery
- Collected data for selected metrics



OFFICE OF  
**SUSTAINABILITY**

CITY OF AUSTIN

# Progress Update

## Gap Analysis:

- Access
- Competition
- Demand
- Regulations
- Policies
- Costs



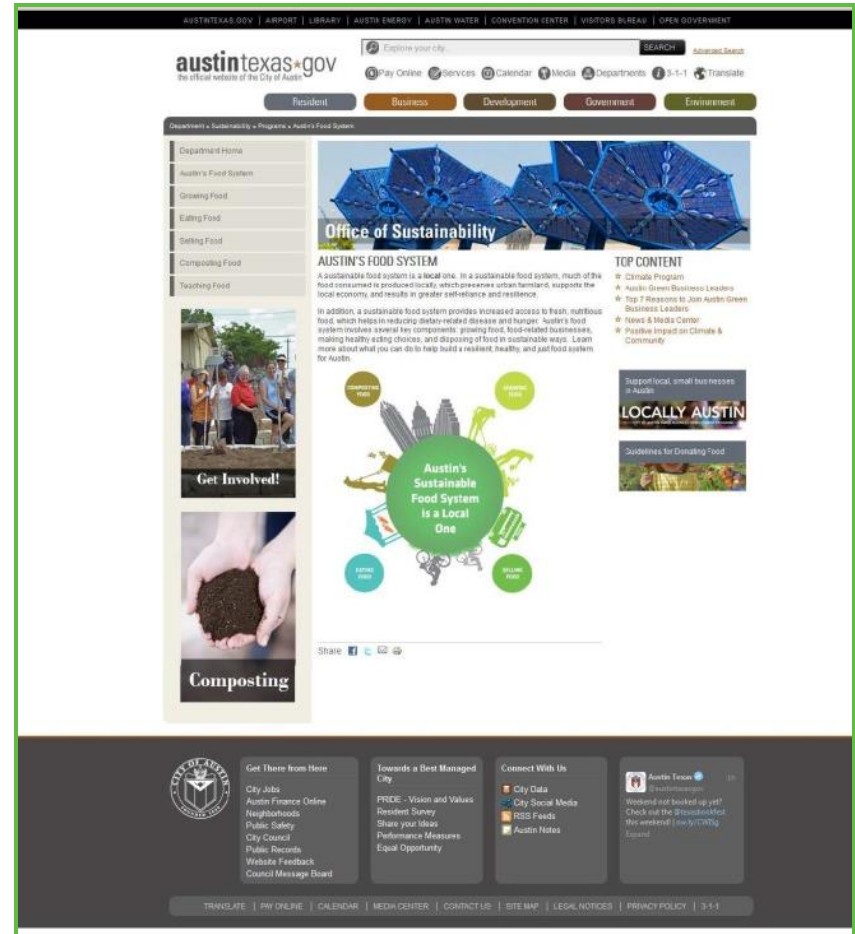
OFFICE OF  
**SUSTAINABILITY**

CITY OF AUSTIN

# Progress Update

## Food Portal Launch:

- Educational materials
  - How to donate food
  - How to compost
  - Ways to eat healthy
- Codes and regulations
  - Starting a business
  - Starting a community garden
- Organizations
  - Helping with hunger
  - Ways to donate food
  - Where to buy local food

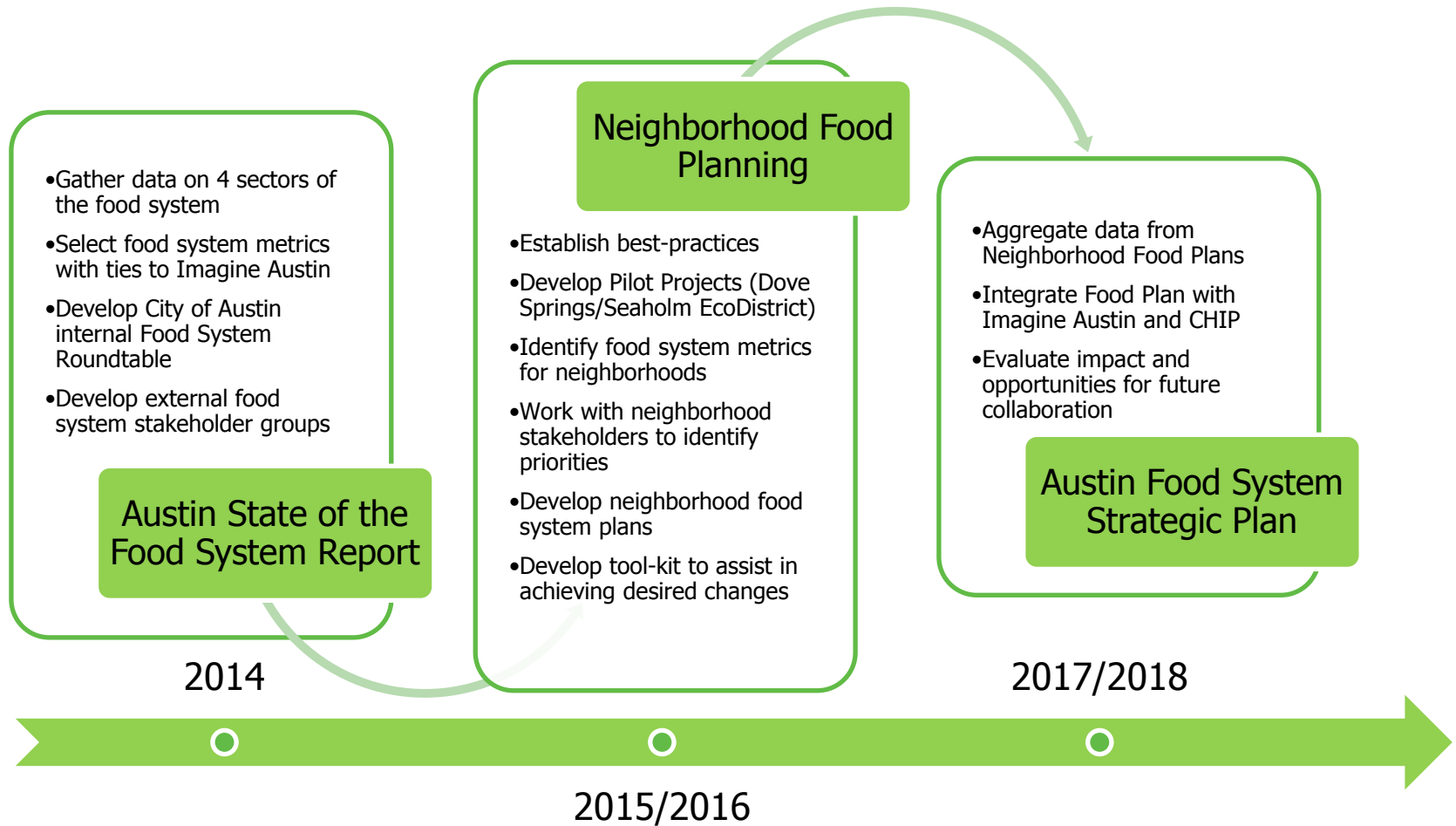


OFFICE OF  
SUSTAINABILITY

CITY OF AUSTIN



# What's Next?



OFFICE OF  
**SUSTAINABILITY**

CITY OF AUSTIN

# Input and Discussion

## State of the Food System Report



OFFICE OF  
SUSTAINABILITY

CITY OF AUSTIN

# State of the Food System Report

## Purpose:

- Educate
  - Snapshot of current food system
  - Identifies trends
  - Easily understood – highly graphic
- Links to existing goals
  - Imagine Austin/ CHIP
  - COA programs and initiatives
- Organize priorities and action
  - Creates a common framework
  - Engages community partners
  - Identifies a path to change



OFFICE OF  
SUSTAINABILITY

CITY OF AUSTIN



# Limits to Food System Report

- This is a only starting point
- Challenges:
  - Metrics cover different geographical areas
  - Trends are difficult to track
  - COA has a limited direct impact
  - Complexity of global food system / City boundaries



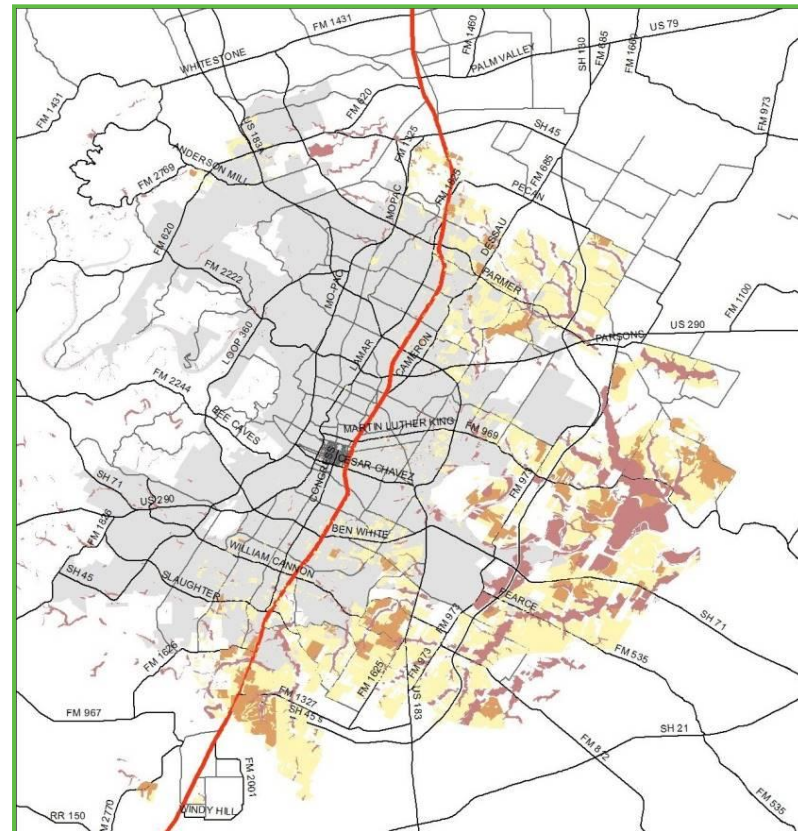
OFFICE OF  
**SUSTAINABILITY**

CITY OF AUSTIN

# Growing Food

## Metrics:

- 11 year farmland loss = 25%
  - % Travis County = 39%
- Total community gardens = 52
  - Available plots = 0 (wait lists)
- AISD Schools with gardens = 77%
- Supply of food at any time = 3 days
- Average age of farmers = 62
- Average farm worker income = \$11K



Vacant Land in Austin



OFFICE OF  
SUSTAINABILITY

CITY OF AUSTIN

# Growing Food

## Takeaways:

- Preserving farmland requires innovative approach
- Products grown in Central Texas are a small percentage of what we eat
- School, community, and urban gardens are in high demand
- Farmer demographics must be addressed



OFFICE OF  
SUSTAINABILITY

CITY OF AUSTIN

# Growing Food

## COA Profile

- Parks and Recreation
  - Community Garden guidelines
- Planning and Development
  - Urban Farm Ordinance - Certificate of Compliance

## Private Sector Profiles

- Festival Beach Community Garden
- Agua Dulce
  - Impact of UFO COC



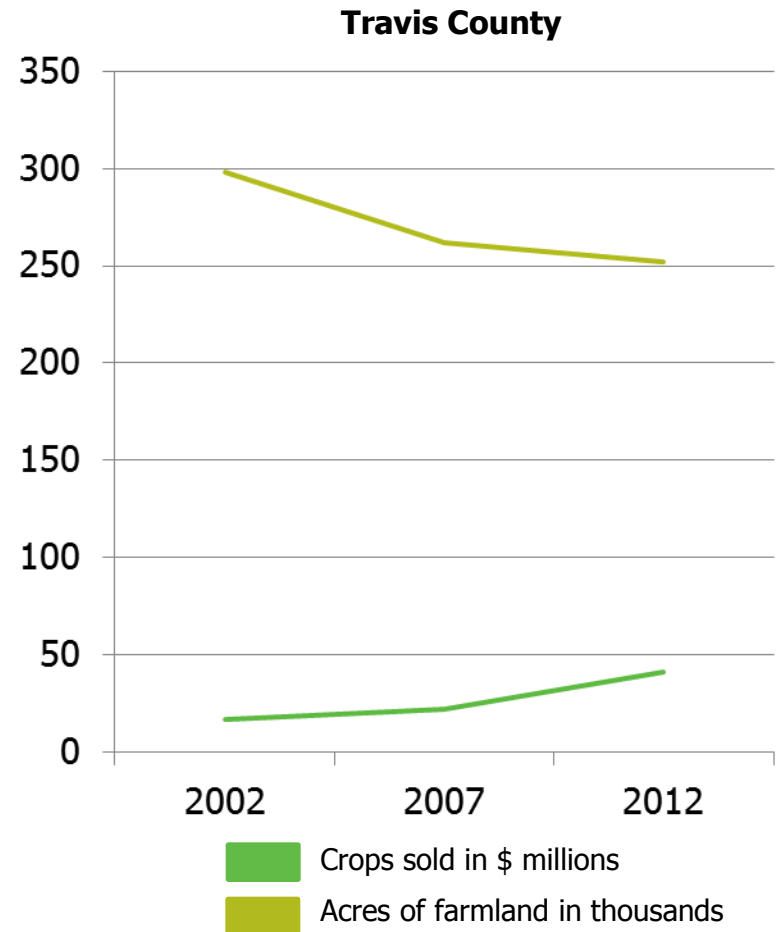
OFFICE OF  
SUSTAINABILITY

CITY OF AUSTIN

# Selling Food

## Metrics:

- Selling local food is a significant part of Austin's economy:
  - Total economic impact = \$4.1B (.45% of GDP in Austin MSA)
  - Food manufacturing = \$737M
  - Food distribution = \$331M
  - Grocery sales = \$449M
  - Farm direct sales = \$1.3M
  - COA sales tax revenue = \$63M (43% of total COA income)



OFFICE OF  
SUSTAINABILITY

CITY OF AUSTIN



# Selling Food

## Takeaways:

- Buying local food benefits:
  - Producers
  - Consumers
  - Local economy
  - Environment
- More local processing & manufacturing is needed
- Local selling mechanisms need evaluation & improvement:
  - # of farmers markets & fee structure
  - Demand exceeds supply for institutional buyers
  - Geographical distribution of grocery stores



OFFICE OF  
SUSTAINABILITY

CITY OF AUSTIN

# Selling Food

## COA Profile

- Health and Human Services
  - Farmers Market Regulations
- Human Resource
  - Farm to Work program
- Economic Development
  - Economic Impact study

## Private Sector Profiles

- Sustainable Food Center
  - Farmers Market Double Dollar programs
- Salt and Time/ Franklin's BBQ
  - Impact of limited # of local animal processors on local businesses



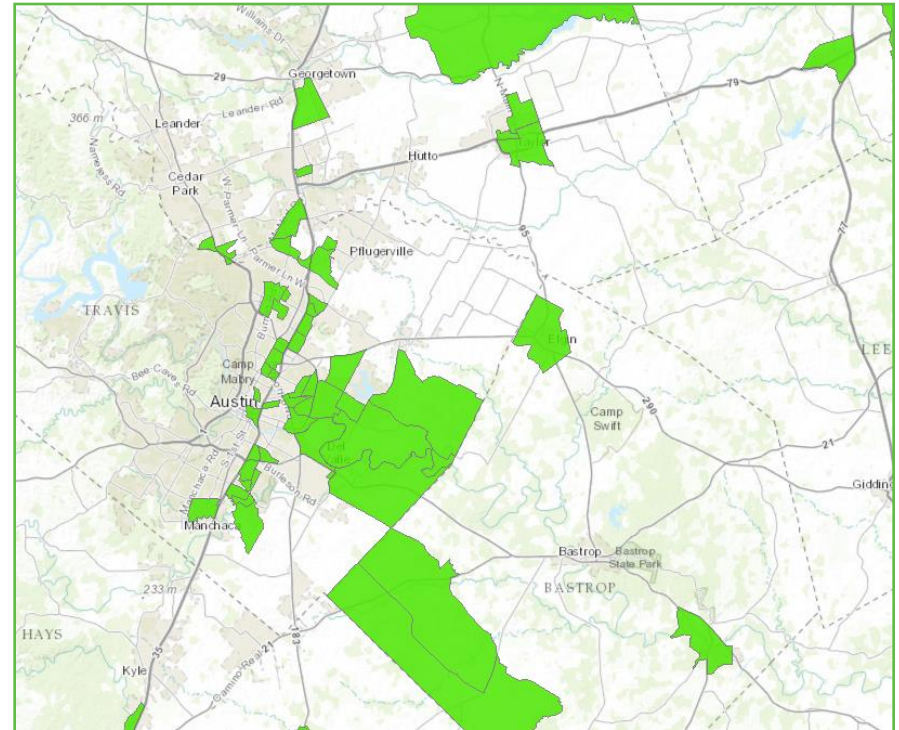
OFFICE OF  
SUSTAINABILITY

CITY OF AUSTIN

# Eating Food

## Metrics:

- Food insecure = 17.6%
  - Only 57% of eligible residents receive SNAP
  - Food insecurity costs Texas \$9B per year
- Eligible School Lunch program:
  - Free and Reduced = 63%
- Obesity rate = 25.5%
- Diabetes rate = 7.4%
- Food retail = over 6,000 restaurants and 85 full service grocery stores



Austin Food Desert Map



OFFICE OF  
SUSTAINABILITY

CITY OF AUSTIN

# Eating Food

## Takeaways:

- Food insecurity disproportionately impacts:
  - Children
  - Minorities
  - Elderly
- Many Austinites do not have healthy eating habits
- Priorities for improvement:
  - Increased access to healthy food
  - Improve planning for healthy food
  - Addressing affordability
  - Education and outreach



OFFICE OF  
SUSTAINABILITY

CITY OF AUSTIN

# Eating Food

## COA Profile

- Transportation
  - Access to healthy food
- Health and Human Services
  - Healthy Corner Store Initiative

## Private Sector Profiles

- CAP Metro
  - Grocery Store routes
- Capital Area Food Bank
  - SNAP outreach



OFFICE OF  
SUSTAINABILITY

CITY OF AUSTIN



# Food Recovery

## Metrics:

- Food waste = 421,500,000 lbs. per year / \$208M
- Households with access to curbside composting = 14,322
- Organic material diverted = 1,837 tons
- Keep Austin Fed recovers 360,000 pounds/year
- ARR composting classes = 50



OFFICE OF  
SUSTAINABILITY

CITY OF AUSTIN

# Food Recovery

## Takeaways:

- Benefits of food recovery:
  - Reduces food insecurity
  - Achieves Zero Waste goal
  - Saves money
  - Conserves resources
  - Reduces climate change impacts
- 25% food waste = 25% food insecurity
- Specific strategies should be developed for:
  - Residents, businesses, schools & institutions
  - Neighborhood-scale solutions
  - Providing compost to local farms



OFFICE OF  
SUSTAINABILITY

CITY OF AUSTIN

# Food Recovery

## COA Profile

- Austin Resource Recovery
  - Residential and business pilots

## Private Sector Profiles

- Eastside Compost Peddlers
- Keep Austin Fed
  - Food Recovery
- UT Arlington/ Eco-Network
  - Food Waste Charter



OFFICE OF  
**SUSTAINABILITY**

CITY OF AUSTIN

Edwin Marty, Food Policy Manager  
edwin.marty@austintexas.gov



OFFICE OF  
SUSTAINABILITY

CITY OF AUSTIN