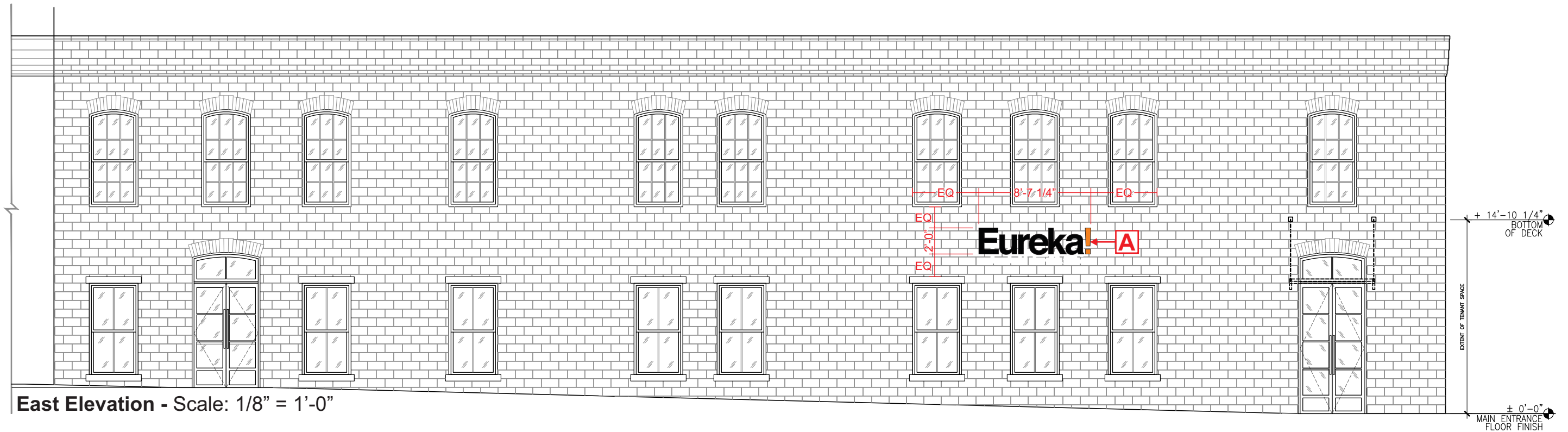




Conceptual rendering - Scale: NTS

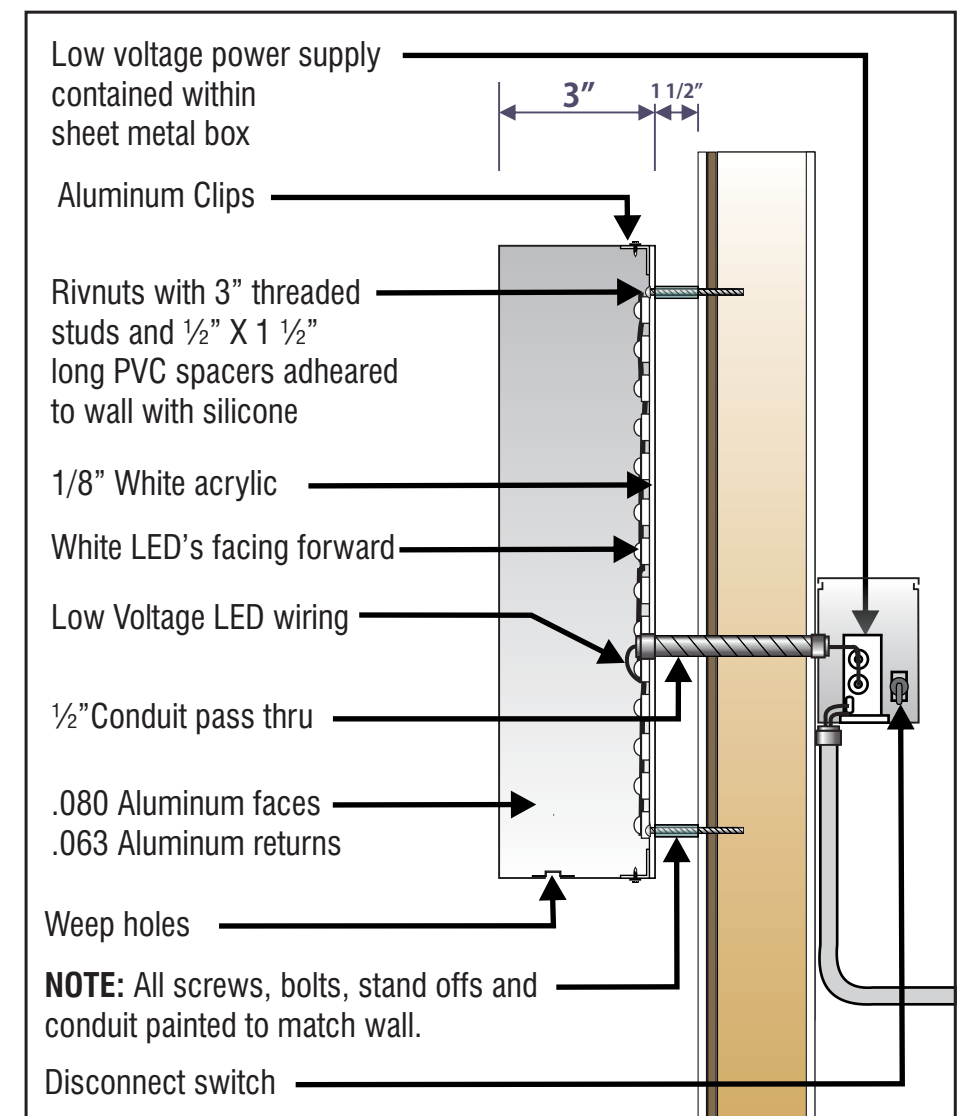




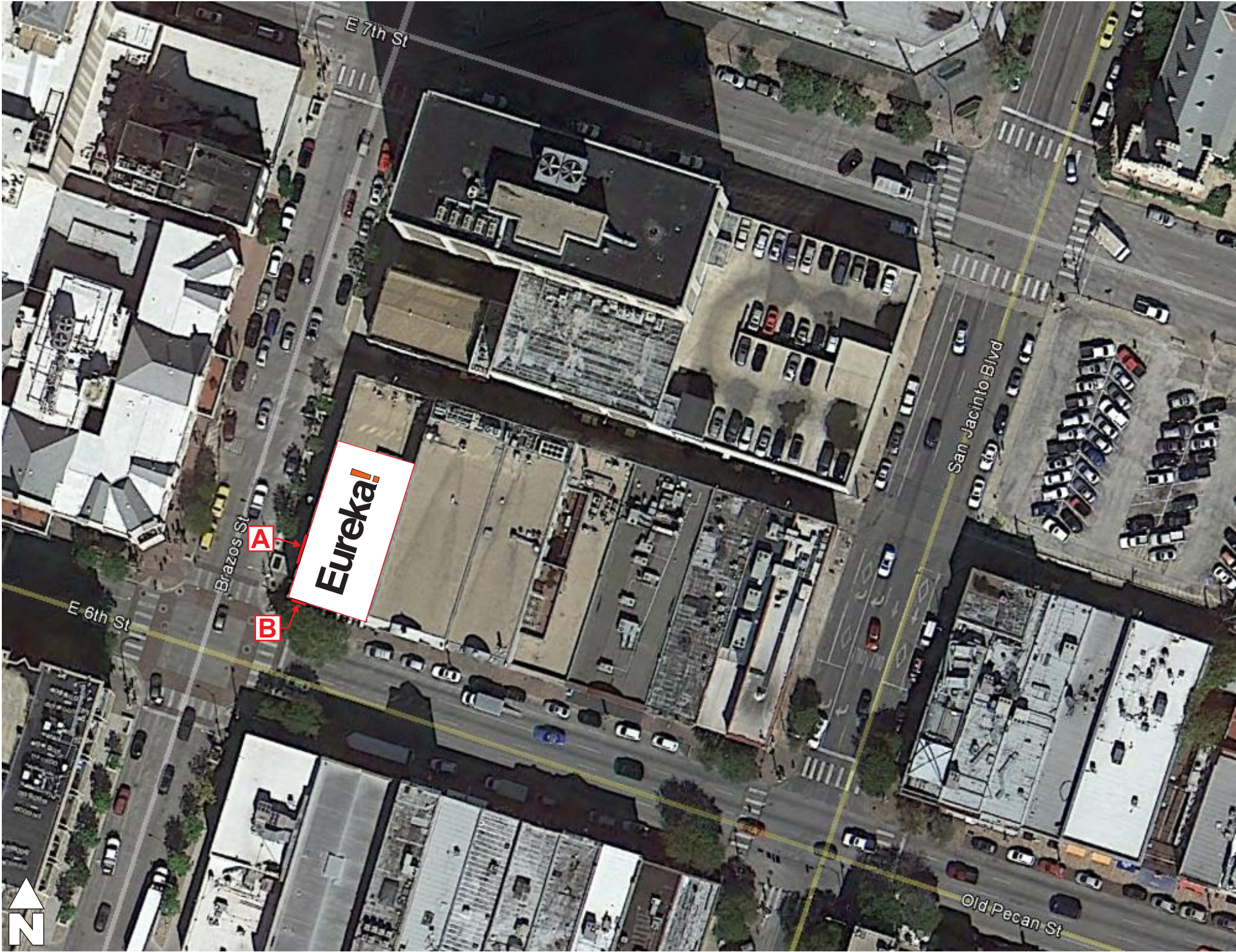
Night view - NTS

**A-B BUILDING SIGN SPECIFICATIONS** Scale: 3/4" = 1'-0"  
Description: Manufacture and install two (2) sets of halo-illuminated channel letters and exclamation point.

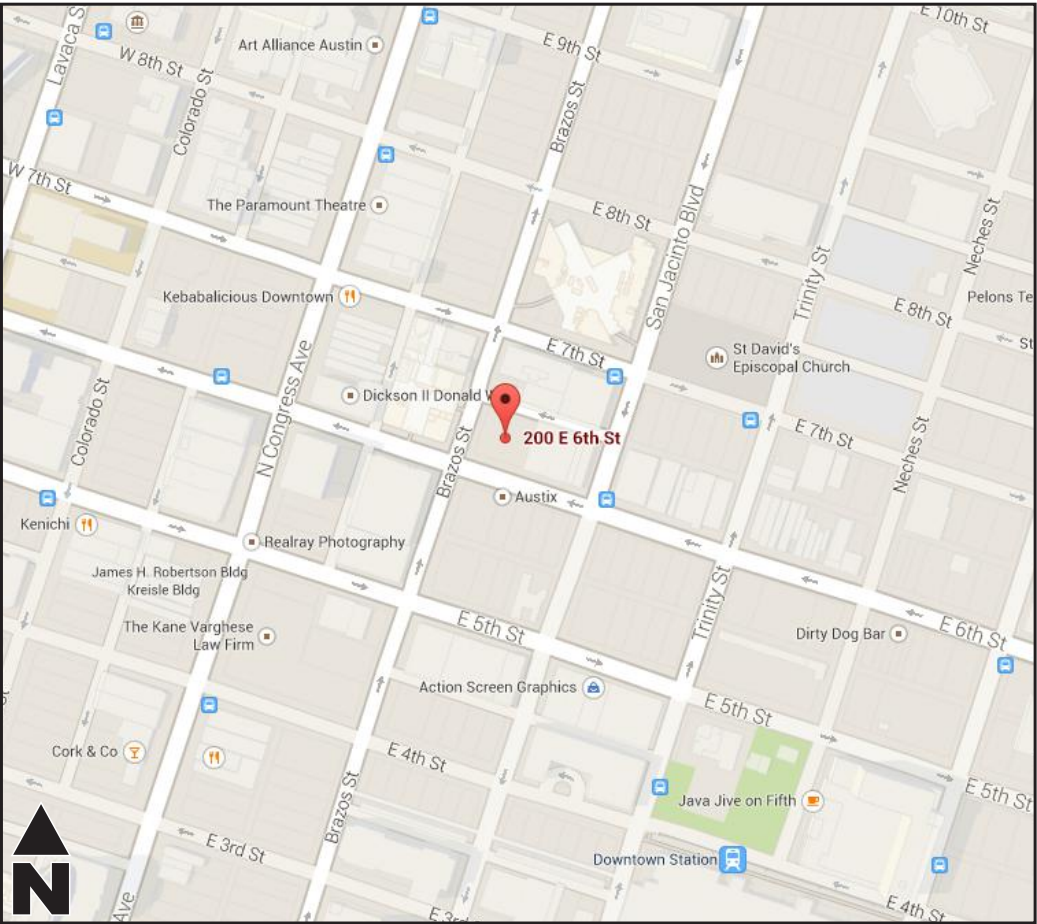
Component	Type	Specifications	Color / Finish
eureka letters	Faces	.080" Alum.	Paint (Matte/flat)
	Returns	.063" Aluminum	Painted (Matte/flat)
	Backs	1/8" White acrylic	N/A
	Illumination	LED	Front and rear facing
exclamation point	Face	.080" Alum.	Paint (Matte/flat)
	Returns	.063" Aluminum	Painted (Matte/flat)
	Back	1/8" White acrylic	N/A
	Illumination	LED	Front and rear facing
	Standoffs	1/2" x 1 1/2" PVC	Paint



Section detail - NTS



Site plan - Scale: NTS



Site plan - Scale: NTS

PROJECT:	
CUSTOMER:	Eureka
LOCATION:	200 E. 6th Street - Austin, TX 78701
DATE:	6/10/2014
SALES:	David Esajian
DESIGNER:	James Franks

REVISION	DATE	DESCRIPTION
5	11-12-14	Remove blade sign
6	12-6-14	Redesign letters
7	12-8-14	Make sign A larger
8	12-9-14	Make sign A larger and move left
9	12-10-14	Make sign A larger and move right
10	2-9-15	Make signs halo only

APPROVALS	
SALES:	
CUSTOMER:	
LANDLORD:	

**CONCEPTUAL DRAWINGS ONLY:**  
Dimensions are approximate & may change due to construction factors or exact field conditions. Colors shown are as close as printing will allow. Always follow written specifications.

**ALL RIGHTS RESERVED:**  
This design has been created for you in connection with a project being planned for you by AD ART. It may not be shown to anyone outside your organization, and may not be reproduced in any manner without prior consent.