



Hartford Triangle Pocket Park Conceptual Master Plan

Land, Facilities and Programs Committee of Parks and Recreation Board
City of Austin-Parks & Recreation Department
Brian Block, Development Administrator
March 9, 2015





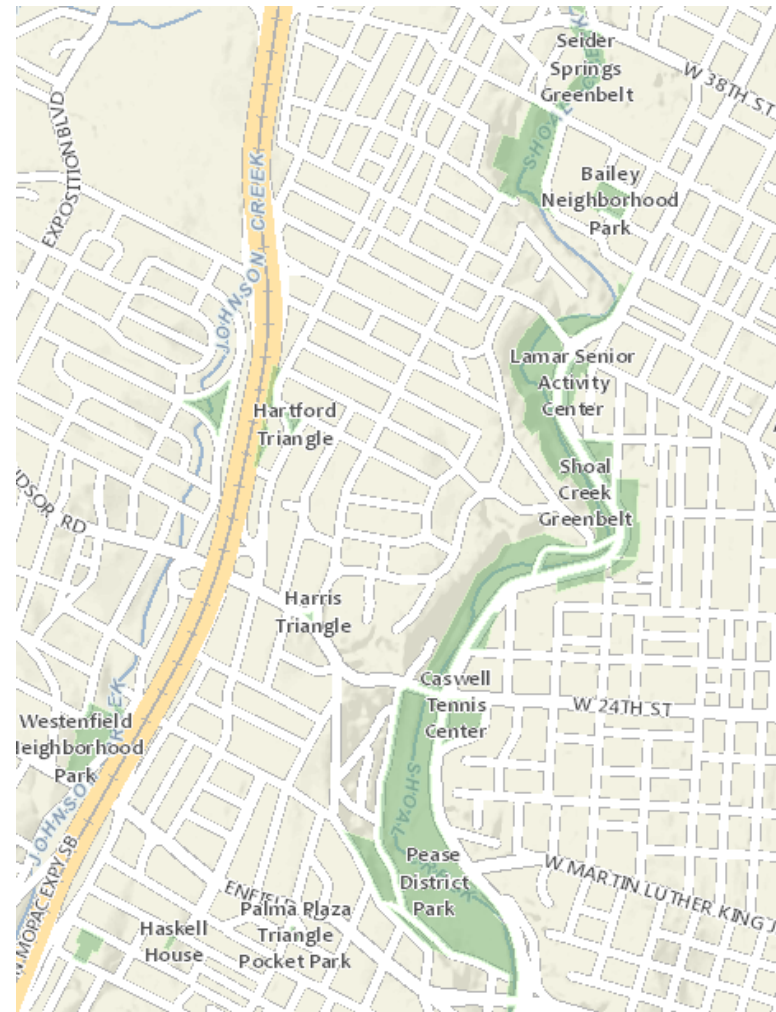
Current Use: Undeveloped Open Space

Master Plan Justification



- Community desire for playscape and development of walkable pocket park
- Adopted plan will assist with fundraising efforts
- Area is deficient for developed parks
 - ~ .8 mile to Tarrytown Park
 - ~ 1.2 miles to Bailey Park
 - ~ 1.3 miles to Pease Park
- Meets goals of the PARD Long Range Plan, City Council Priorities and Imagine Austin:

“Publically accessible and child-friendly parks within ¼ mile of urban core residents”





Public Engagement Process

- June, 2013 – Online survey gauging interest in playground in the neighborhood
- Oct 21, 2013 – Info table at Pemberton Heights picnic
- Oct/Nov 2013
 - Direct mail sent to all neighbors directly adjacent to Hartford Triangle
 - Online forum set up and all neighbors directly adjacent to Hartford Triangle invited to comment and discuss
- Feb-April, 2014 – Info posted to neighborhood listserv, Online survey distributed neighborhood-wide
- March 2014 – Article in neighborhood newsletter about proposed pocket park and link to online survey
- March 19, 2014 – Public Meeting jointly hosted by Neighborhood and PARD
 - Listserv notice for all neighbors, mailbox flyers for neighbors directly adjacent to Hartford Triangle



Public Engagement Process

- April, 2014 – Close survey and consider feedback
- Survey Results (highlights)
 - In favor of playground at Hartford Triangle
 - Yes – 122; No - 5; No Opinion – 1
 - Would your family use a playground
 - Yes – 102; No – 20
 - How often would you use the park
 - Occasionally to Several times a week - 108; Rarely to Never - 22
 - How would your family get to the park
 - Walk – 116; Drive – 2; Walk & Drive – 4
- July, 2014 – Refine park concept plan based on feedback including play equipment for older kids and open green space
- Oct, 2014–
 - Distribution of updated concept plan
 - Open House in the park to share concept plan; site amenities staked with ribbon in the field to show where improvements will be located
 - Display table with concept plan at Neighborhood picnic

Community Priorities



- Playscape
- Seating
- Picnic tables
- Completely fenced (nice material, not chain link)
- Nice landscaping
- Open grassy space
- Shade/Shade structure
- Activity to engage older kids/adults



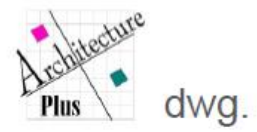
Conceptual Master Plan



Park Amenities



HARTFORD PARK_site plan



Park Amenities



HARTFORD PARK_site plan



dwg.



Master Plan Implementation in Partnership with Neighborhood

PHNA

OR

Affiliated
Non-Profit

- Partner in Partnership Agreement
- Fundraiser and funding provider for construction budget
- Assumes role of project leader for final design and construction
- Provider of enhanced park maintenance



- Partner in Partnership Agreement
- City of Austin owner department for Hartford Triangle
- Collaboration, review and oversight of design and construction phases
- Provider of base level park maintenance
- Long-term monitoring of enhanced maintenance performance





Implementation Plan & Next Steps

- Partnership Agreement with Pemberton Heights Neighborhood Association for Park Development and Enhanced Maintenance
- Fundraising by PHNA
- Engineered and Permit Drawings
- General Permit Site Plan Process
- Bidding/Contracts
- Construction

Action: Make a recommendation to the Parks Board to recommend to the Parks Director the adoption of the Master Plan for Hartford Triangle Pocket Park

