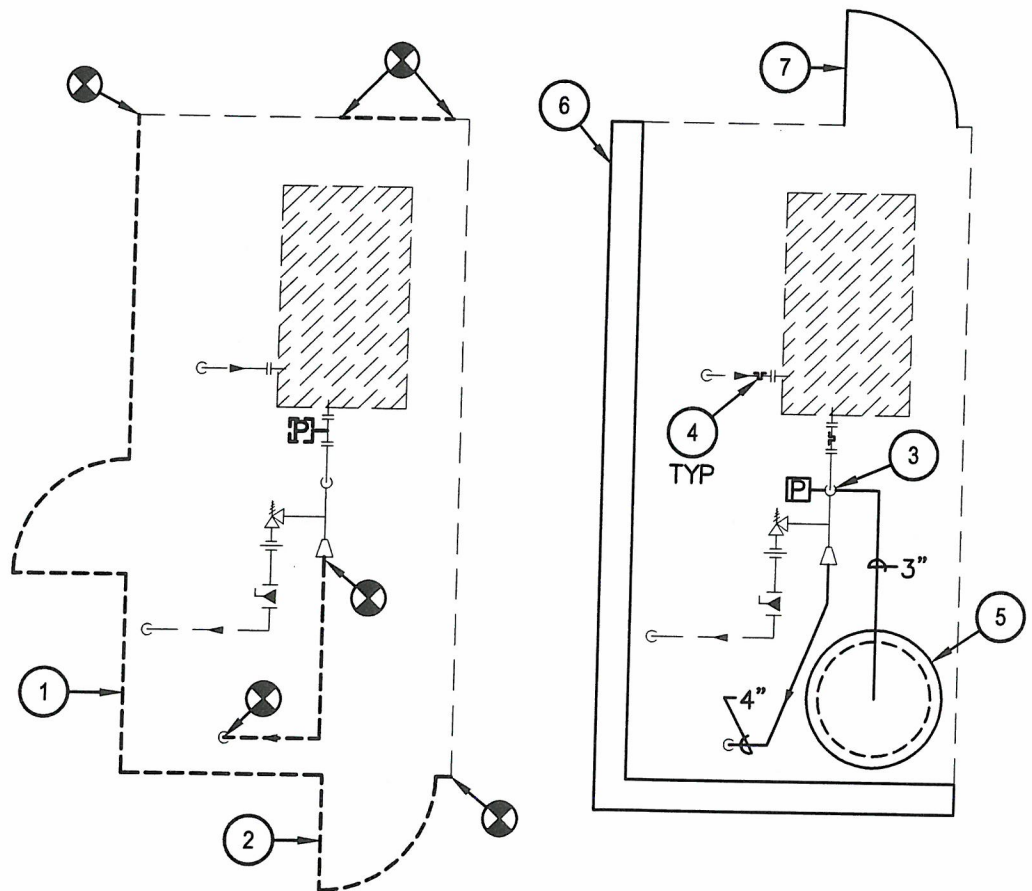




oconnellrobertson.com



- 1 REMOVE EXISTING SCREEN WALL.
- 2 REMOVE DOOR AND SALVAGE.
- 3 ADD IN ORDER, UPSTREAM TO DOWNSTREAM, CHECK VALVE, PRESSURE TAP (WITH BALL VALVE) AND 3" TEE.
- 4 ADD PETES PLUG.
- 5 HYDRO-PNEUMATIC TANK.
- 6 6' HIGH CONCRETE BLOCK WALL.
- 7 NEW DOOR.