

# City of Austin Environmental Board Presentation on Urban Trails

April 1, 2015



# Agenda

- Urban Trails Program Overview
- Urban Trails Master Plan requirements
- Project Updates (projects at 30% design or greater)
  - Violet Crown Trail
  - Country Club Creek Trail
  - Upper Boggy Creek Trail
  - Austin to Manor Trail: Phase 2



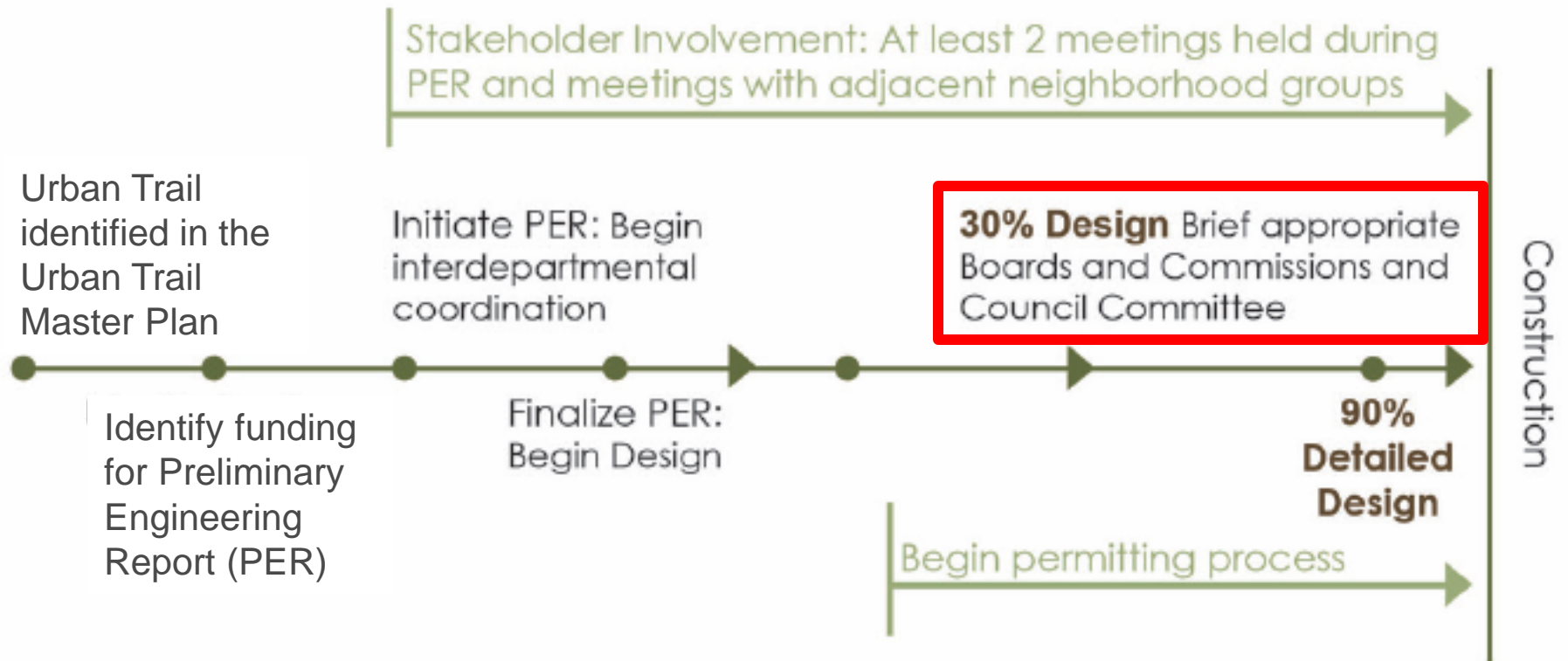
**Urban Trails:** A citywide network of non-motorized, multi-use pathways that are used by bicyclists, walkers and runners for both transportation and recreation purposes.

## Urban Trails:

1. For transportation & recreation use,
2. Link to bicycle & sidewalk network,
3. Wide enough to accommodate all users,
4. Include amenities & unique features,
5. Maintain & operate for safety and comfort,
6. Context-sensitive, environmentally sustainable,
7. Preserve & improve wildlife habitat.



## Urban Trail Implementation Plan Diagram



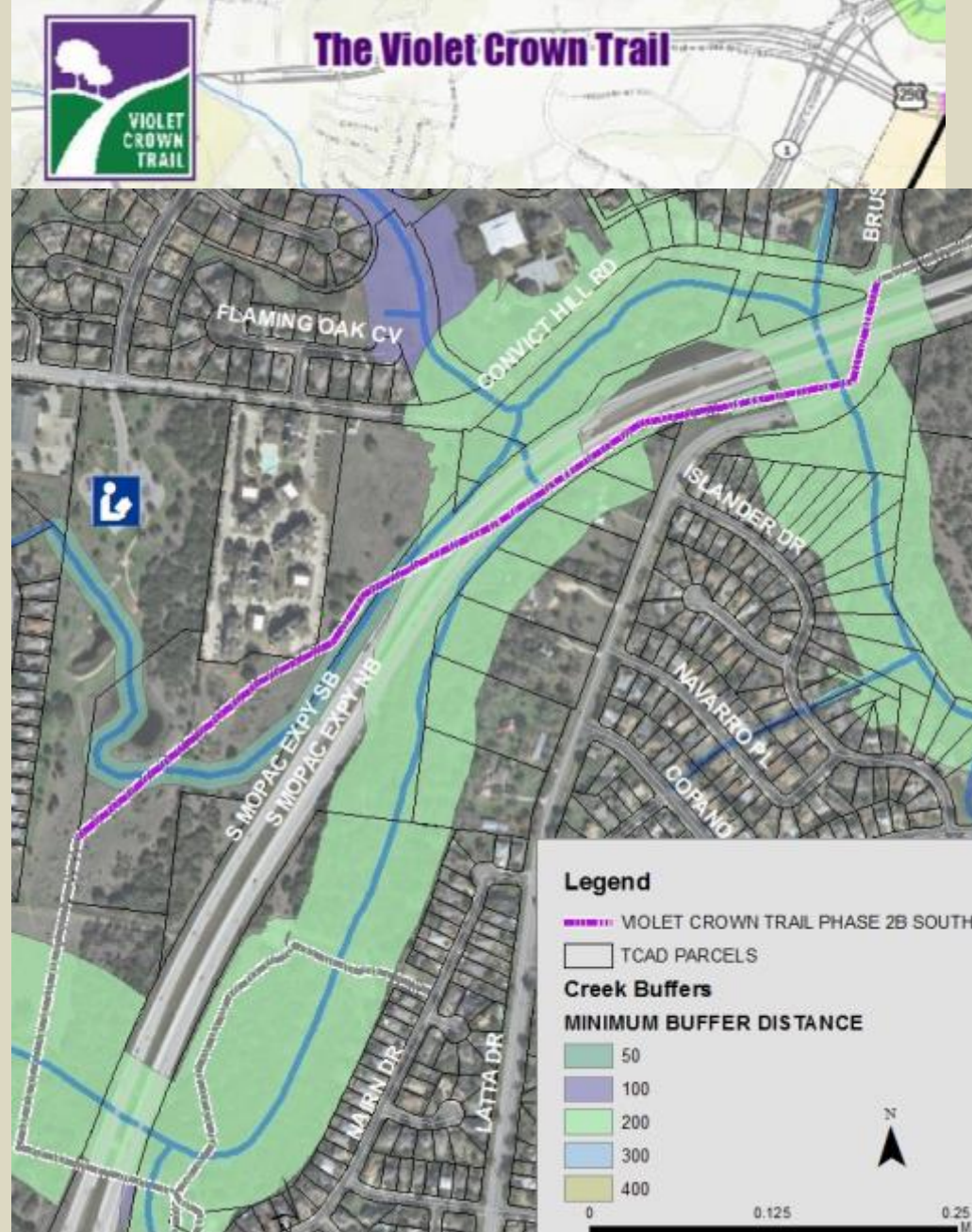
\*Tier II Urban Trails were identified during the UTMP or previous planning processes. Development of Tier II Urban Trails will occur upon adjacent development, planning, or land use changes. All Urban Trails identified in the UTMP are conceptual in nature. Specific routing for Urban Trails is determined during the PER and design phases.





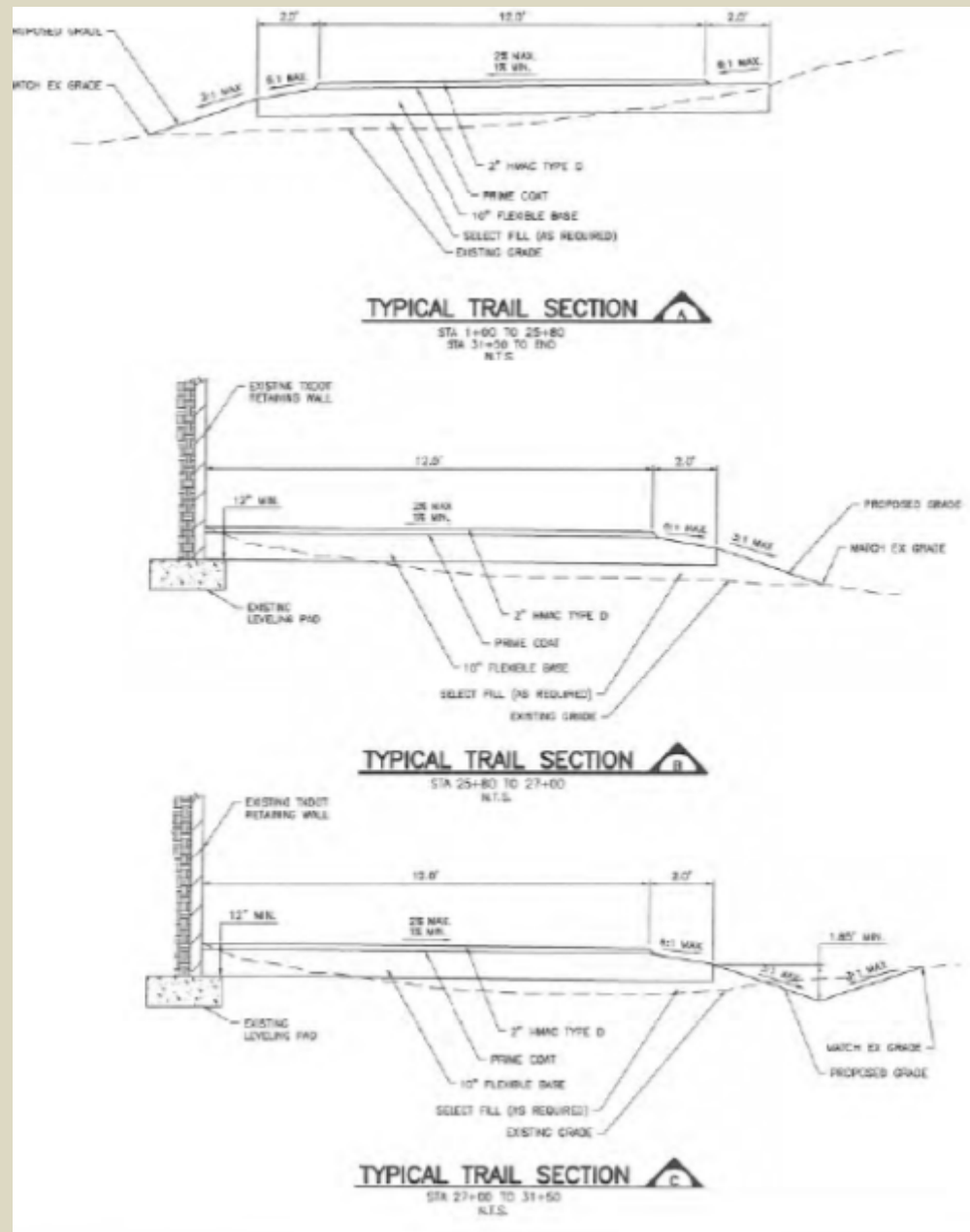
# Violet Crown Trail: Phase 2B South

- Public-Private-Partnership with Hill Country Conservancy
- Convict Hill to Hampton Library.
- Construction: September 2015 - Summer 2016
- ¾ mile
- Cost: \$844,000 provided by 2012 Bond funds



# Violet Crown Trail: Phase 2B South

- 2 low-water crossings constructed at grade – does not impact floodplain or flow patterns.
- Outside of Erosion Hazard Zone.
- Erosion controls (rip-rap) provided upstream & downstream to decrease erosion potential.
- Current plans show removal of 3 trees, all in in TXDOT ROW. No alternative alignment available:
  - 8" Oak
  - 9" Chinaberry
  - 21" Ligustrum







Violet Crown Trail Phase 2B South:  
looking north towards Brush  
Country/Convict Hill Intersection





Violet Crown Trail Phase 2B South:  
Looking south



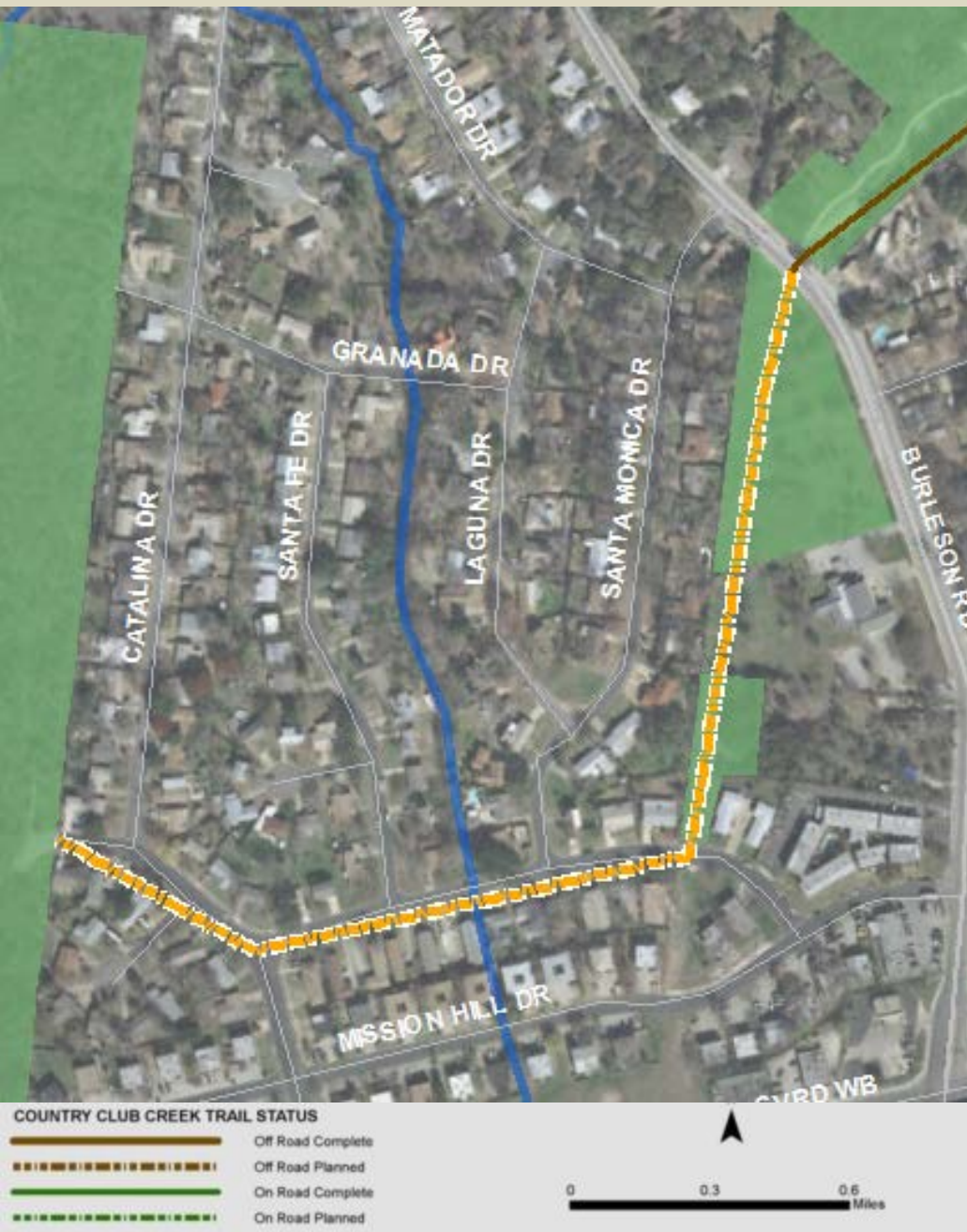
A photograph of a grassy field with trees and houses in the background. The field is covered in green grass and some dry, brownish vegetation. There are several trees, including a large, dark evergreen on the left and a large, leafy deciduous tree on the right. In the background, there are several houses with red roofs and white walls. The sky is clear and blue.

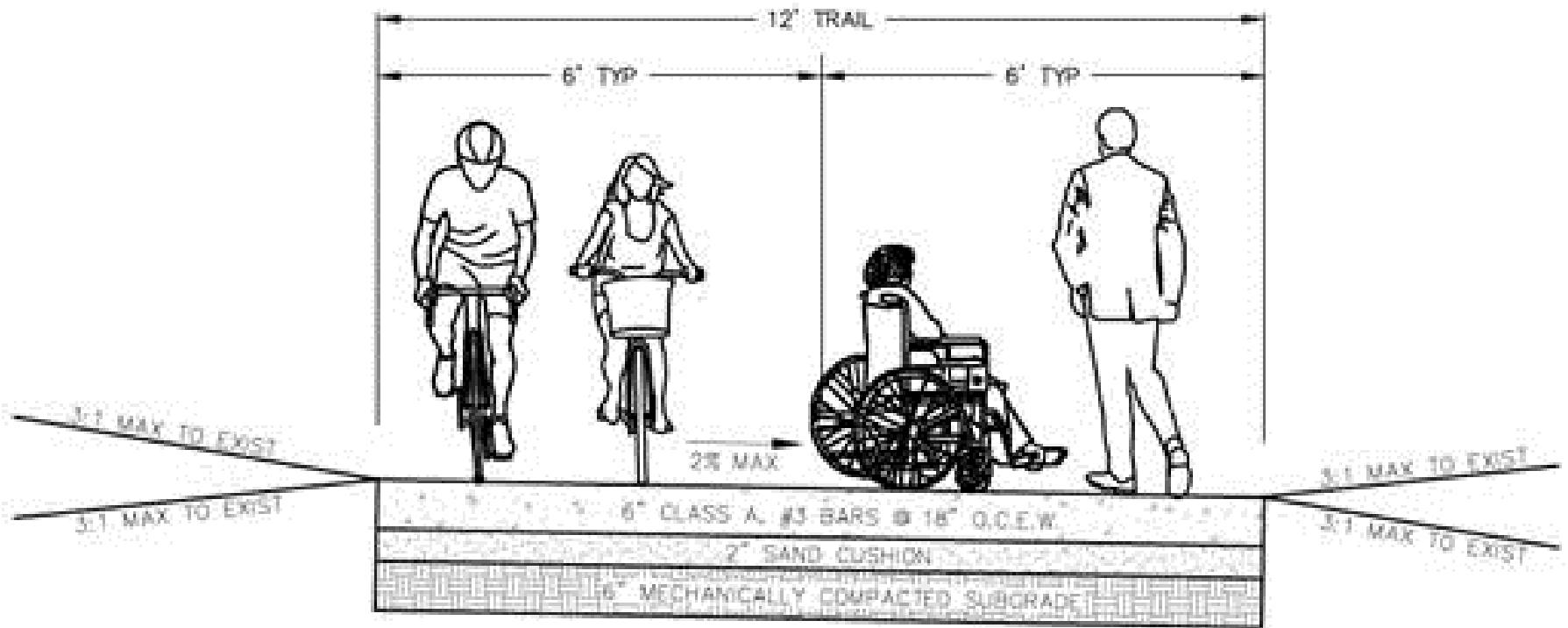
Violet Crown Trail Phase 2B South:  
Westbound, route to Hampton Library



# Country Club Creek Trail

- 2 PER stakeholder meetings held winter 2014-2015
- Begin design + construction Section 1: Mabel Davis Park to Burleson Road.
- 0.5 mile
- Design complete May 2015.
- Construction: Fall 2015 - Spring 2016.
- Current plans show no trees impacted.
- Design + construction cost = \$500,000 (from 2012 Bond funds).
- Subsequent sections funded by parkland dedication, bond, and grant funds.





TRAIL TYPICAL SECTION — SEGMENT 1

N.T.S.

## Country Club Creek Trail: Typical Cross-Section



# Country Club Creek Trail



Connection to existing trail

Typical trail location, on Austin Energy easement, within parkland



Country Club Creek Trail:  
Ventura Drive, looking east.  
Route to Mabel Davis Park.



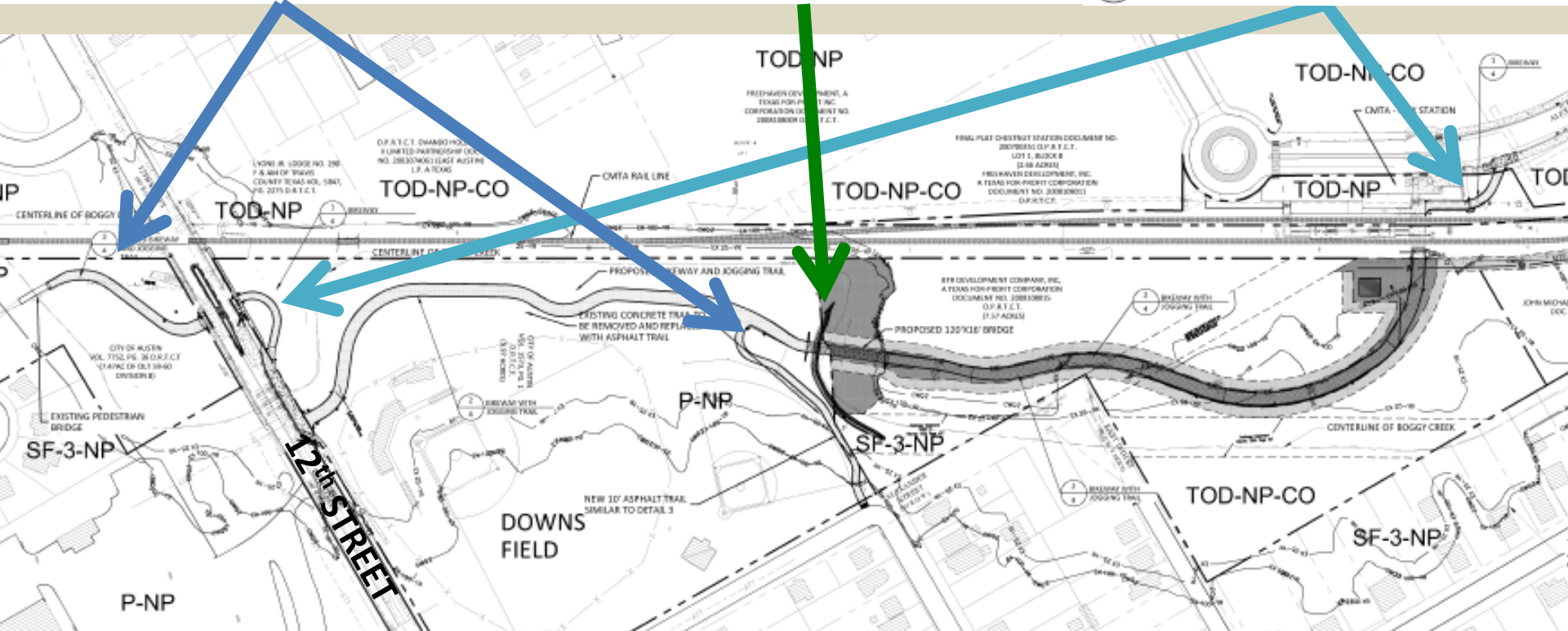
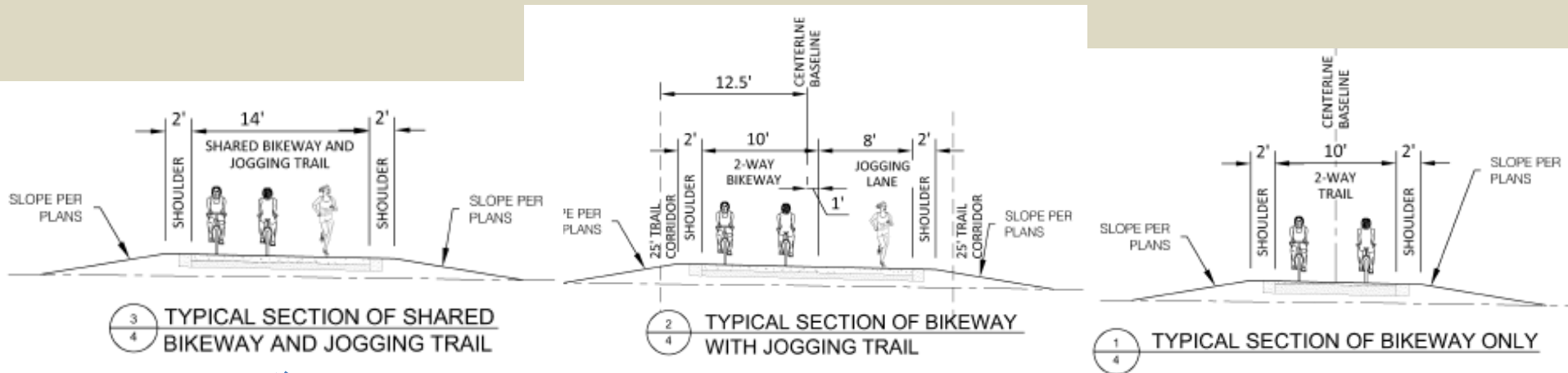
# Upper Boggy Creek Trail

- Connect Chestnut, Rosewood and surrounding neighborhoods to:
  - MLK Station, Sustainable Food Center Community Gardens, Farmer's Market, and more
- 1 new creek crossing.
- 0.5 mile
- Meredith Family donating easement for trail.
- 90% design
- Seeking funding (\$1.6m) for construction.





# Upper Boggy Creek Trail



# Proposed bridge over Boggy Creek







Upper Boggy Creek Trail:  
Westbound along 12<sup>th</sup> Street





Upper Boggy Creek Trail:  
Looking south towards 12<sup>th</sup> Street





Upper Boggy Creek Trail:  
Looking south from MLK Station Platform



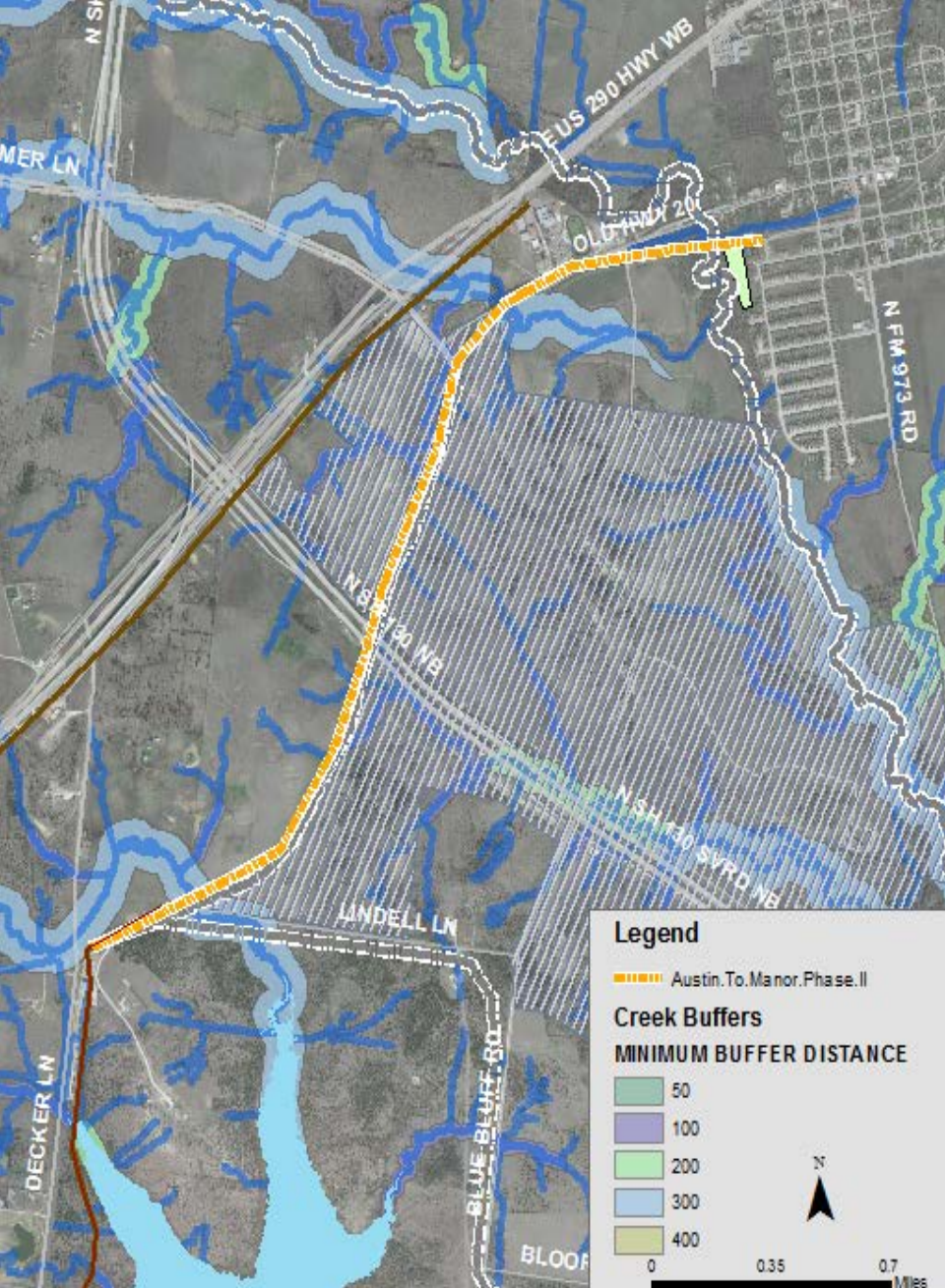


Upper Boggy Creek Trail:  
Looking east from MLK Station Platform



# Austin to Manor Trail: Phase 2

- Lindell Lane to Ben Fisher Park (Gilleland Trail)
- 3 miles
- Design complete by September 2016
- Construction currently un-funded.
- Construction cost: approximately \$6m



# Austin to Manor Trail: Phase 2



Austin to Manor Trail Phase 2: along Lindell Lane looking eastbound, exiting Walter E. Long Park

- 3 low-water bridges designed to be overtopped during a 5-year storm.
- Creeks in the area are slow moving. While the velocity of the flows are lower, the creeks also tend to back up and drain slowly.
- Designing to the 25 and 100-yr flood, but the structures will be over-topped as a low water bridge.
- Mitigate erosion by armoring and stabilizing disturbed sites and by taking measures to limit construction disturbances.
- No heritage trees impacted.



# Austin to Manor Trail Phase 2: Looking eastbound from SH 130 along CapMetro ROW







Questions?

Photo: Southern Walnut Creek Trail











