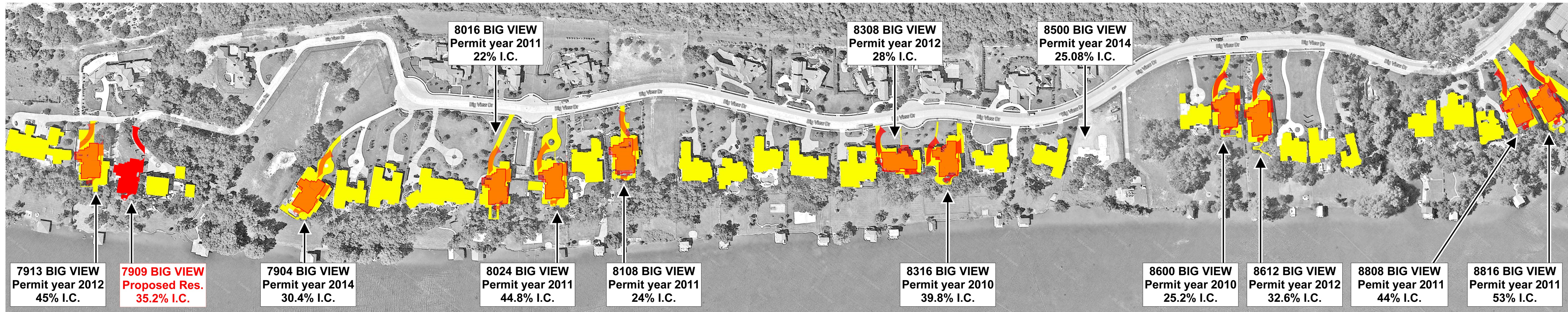


**River Place Section 16 & 17 Lake Front Lots with New Houses or Additions  
since 2009 Annexation  
Based on LA Zoning Impervious Cover Regulations**



→ Residences on Big View Dr.

→ Proposed  
 7909 Residence Heated Area = 5,829 sq. ft.  
 7909 Total Impervious Cover = 8,238 sq. ft. (35.2%)