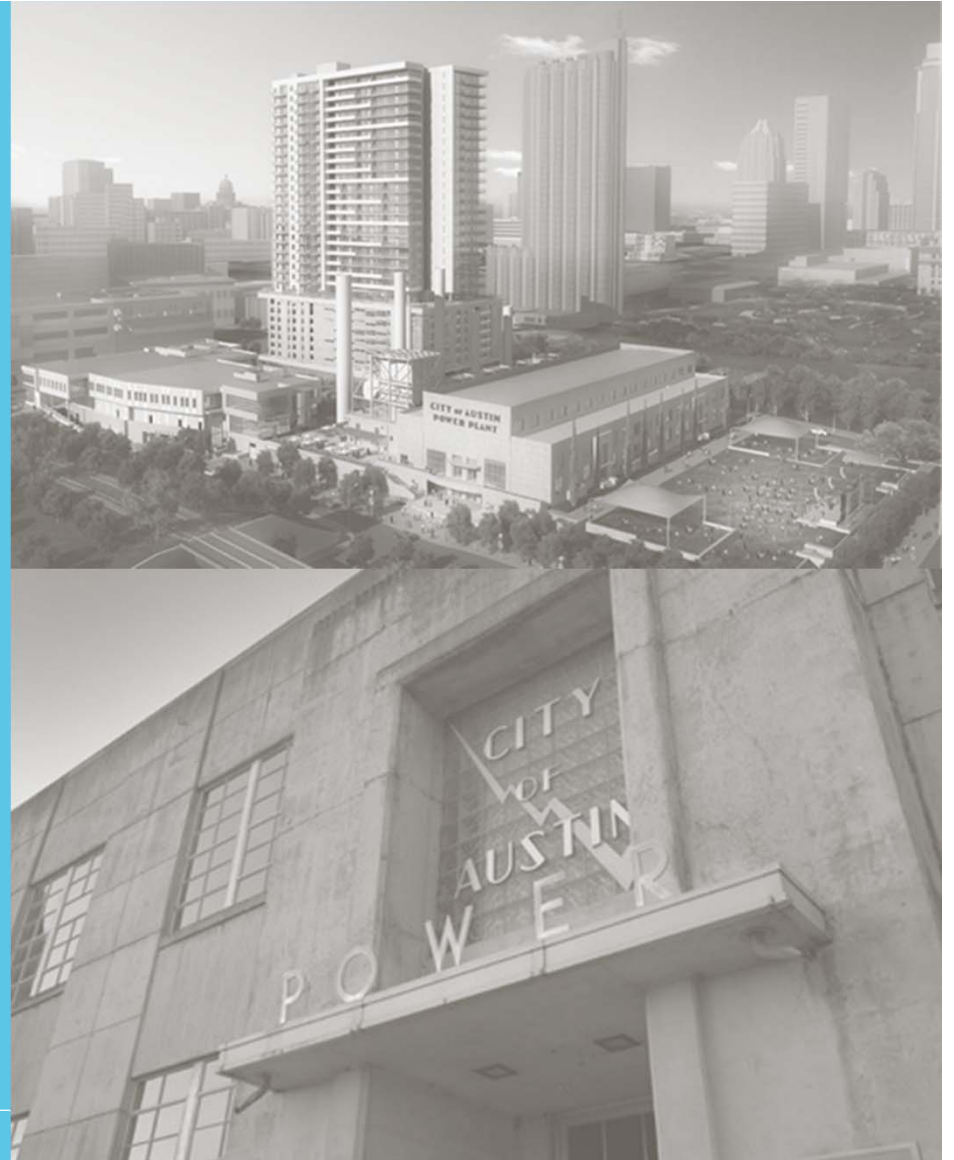




MBE/WBE Advisory Committee athenahealth Project Update

March 3, 2015



Partnership. Performance.



Table of Contents

1. About athenahealth
2. Project Overview
3. Project Schedule
4. Project Imagery
5. MBE/WBE Participation



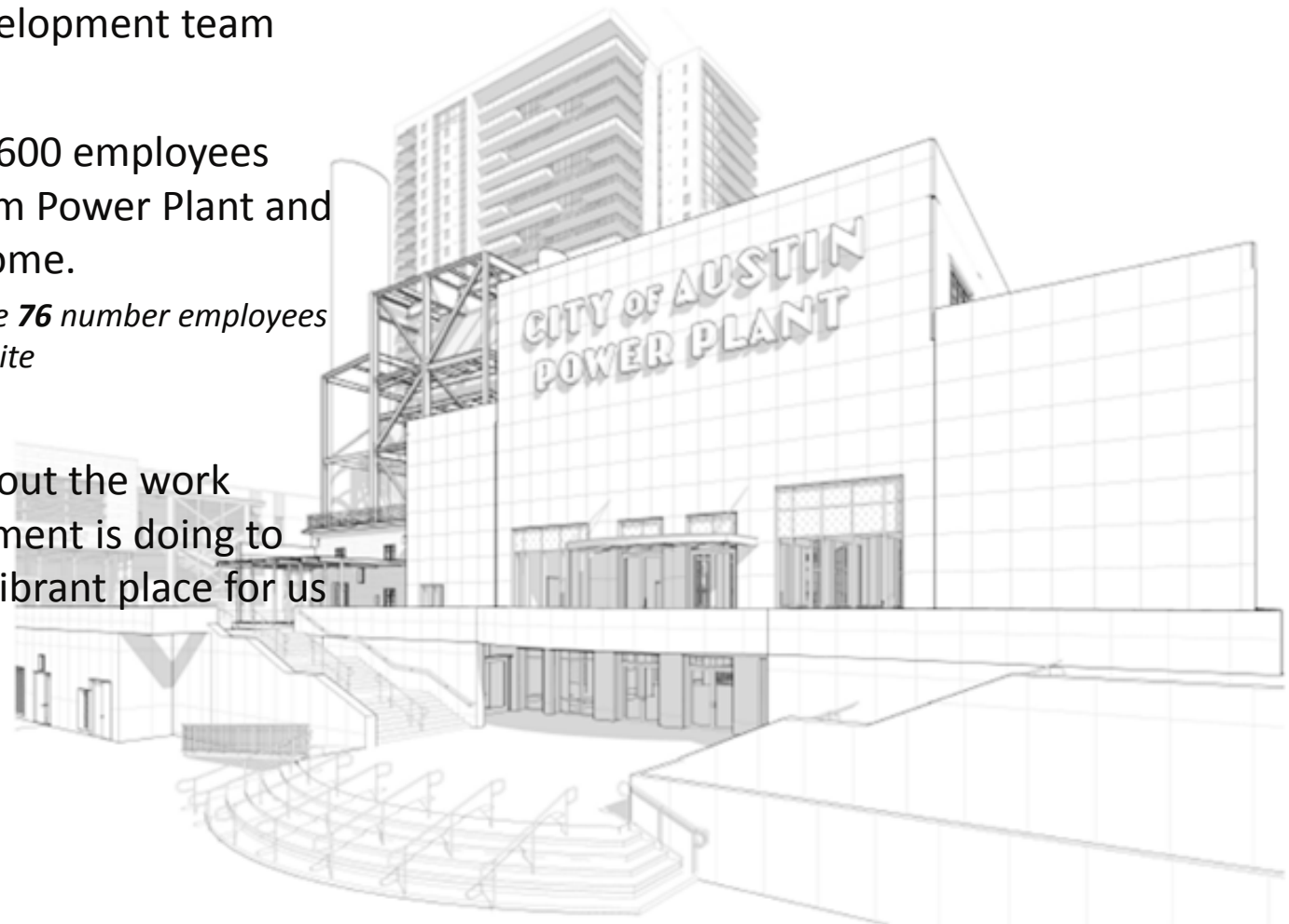
athenahealth Snapshot

- Founded in 1997 as a women's health clinic to allow doctors to focus on patient care by easing administrative burdens and improving productivity
- Leading provider of cloud-based electronic health records, practice management and care coordination services
- Headquartered in Massachusetts with offices in Maine, North Carolina, New Jersey, Georgia, California, India, and now **Austin, TX**
- Total Employees company wide: 3,088
- \$595 mm in revenue in 2013
- Ranked #13 in Forbes' Fastest-Growing Tech Companies List in 2013
- Posted client collections: \$11.7 billion in 2013
- 53,886 providers on the athenahealth network as of Q1/2014



athenahealth in Austin

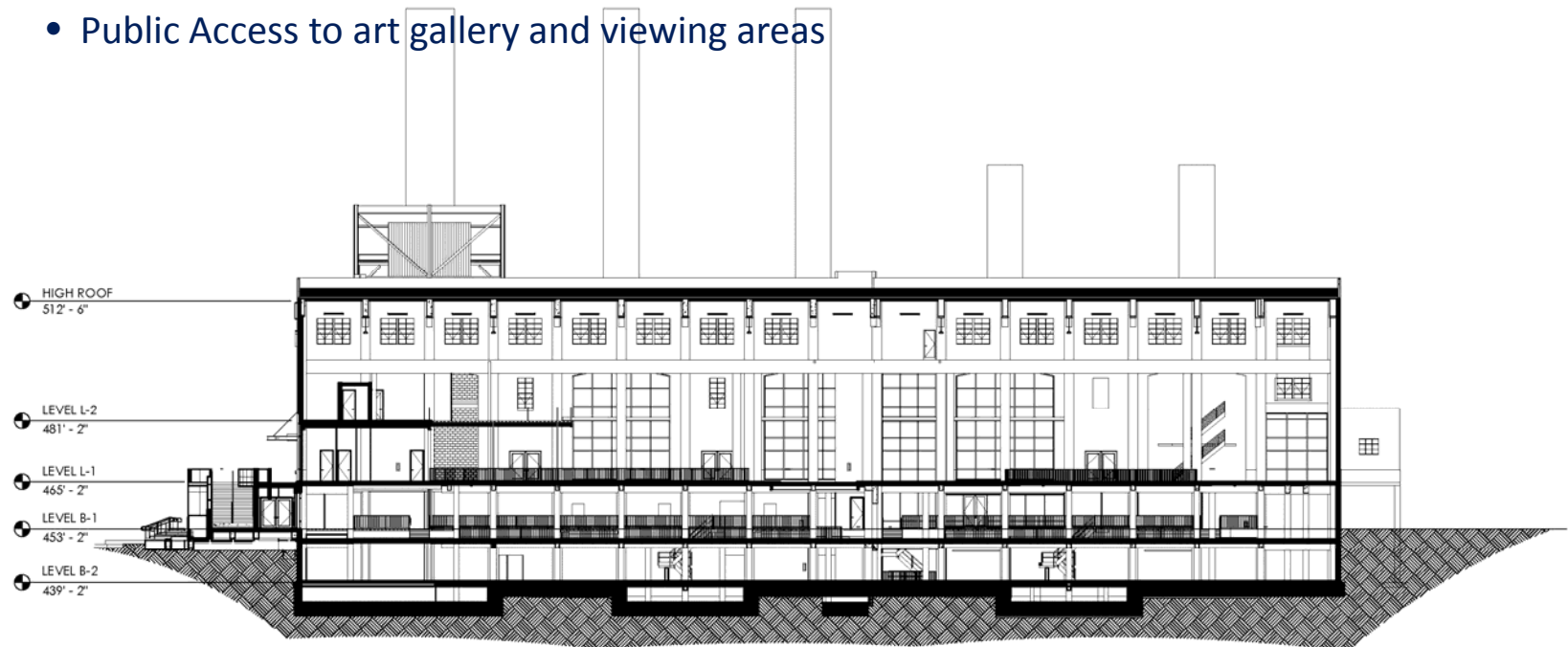
- athenahealth envisions their new Austin office to be a hub for its Research and Development team
- We envision over 600 employees calling the Seaholm Power Plant and Austin, TX their home.
 - ❑ *To date, we have **76** number employees working at the site*
- We are excited about the work Seaholm Development is doing to make this area a vibrant place for us to live and work



About the Project

Project Description:

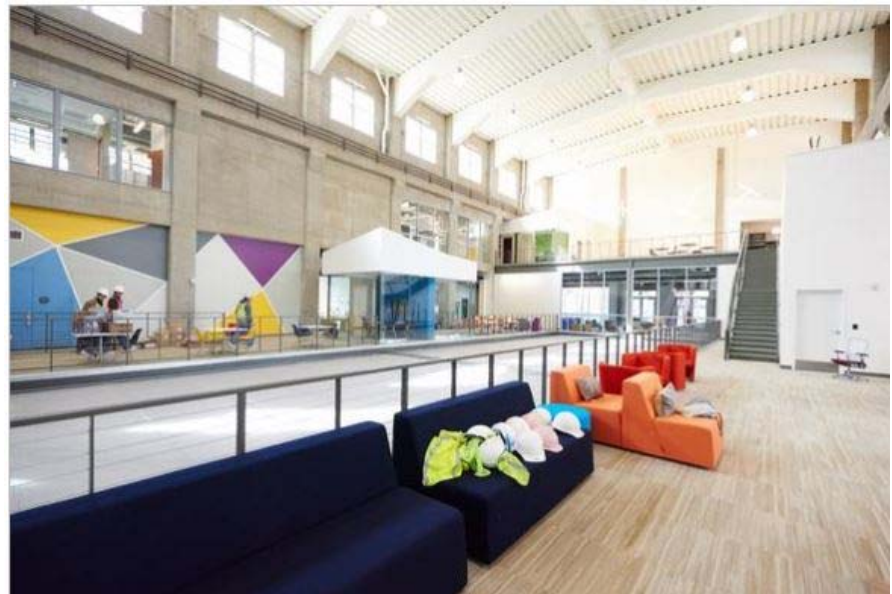
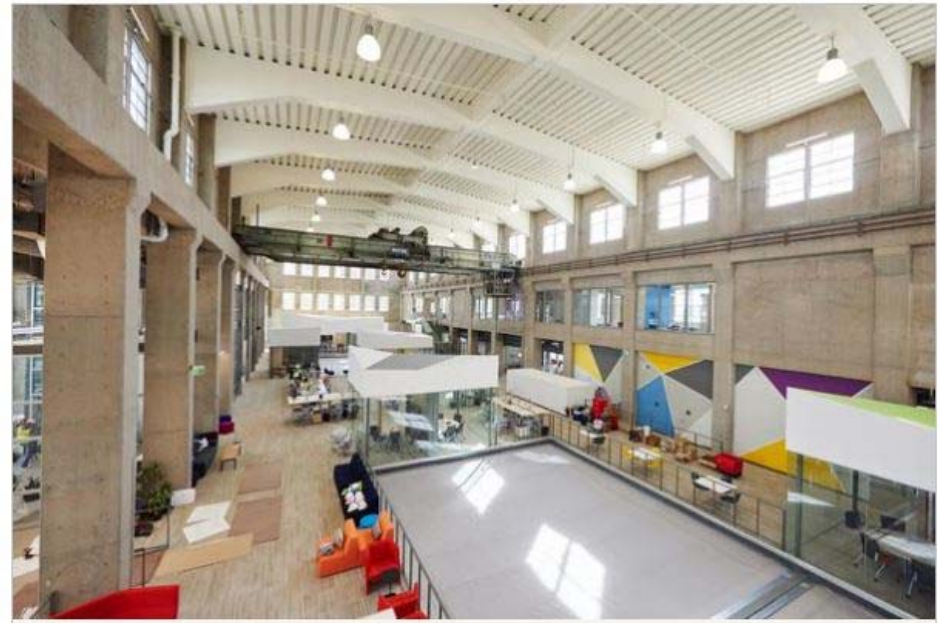
- 4 Story – 103,000 SF Commercial Office Space
- State of the art conferencing capabilities
- Employee lounge and collaboration areas
- Employee Fitness Area
- Showers and Indoor Bicycle Storage
- Quiet Rooms
- Public Access to art gallery and viewing areas



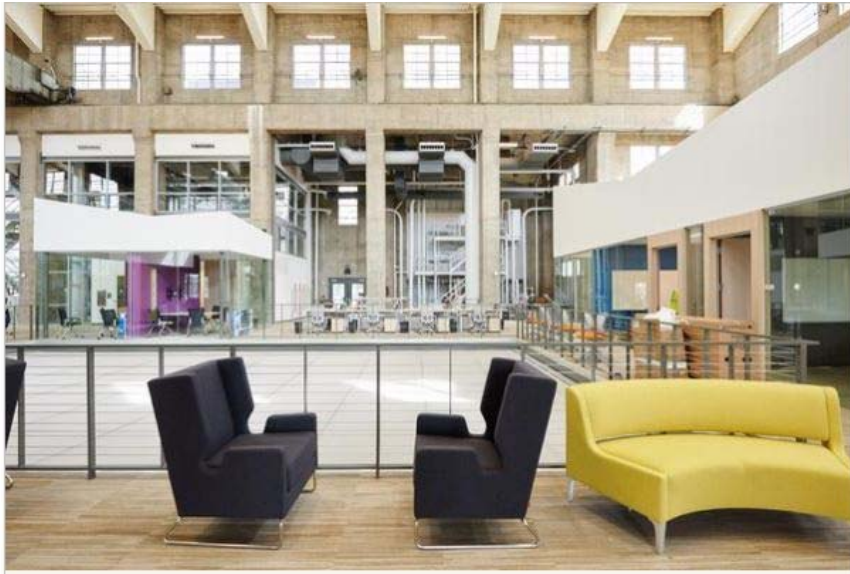
Overview of plans



Project Imagery



Project Imagery



Construction Schedule Overview

Task	Start	Complete
Construction	August, 2014	End of May, 2015
Temporary Certificate of Occupancy	Received on February 9, 2015	
Certificate of Occupancy	Last week of May	
Construction work is 92% complete		

MBE/WBE Participation

Thank you.

