



City of Austin Historic Cemeteries Master Plan

Kim McKnight, MSHP

Presentation to Historic Landmark Commission

April 27, 2015



Process to Date

- Spring, 2012: Parks Board Working Group to identify issues and concerns
- Summer, 2013: 6 meetings to develop Scope of Work
- Fall, 2013: Request for Proposals issued
- March, 2014: Contract with AmaTerra Environmental executed
- 5 Community Meetings
 - April 30, 2014: Carver Branch Library
 - June 26, 2014: NW Recreation Center
 - August 23, 2014: Ruiz Branch Library
 - November 2, 2014: Zilker Botanical Garden
 - January 24, 2015: Carver Branch Library
- January 23-March 9, 2015: Draft Master Plan Posted to Website for Community Review
- Early April, 2015: Revised draft posted for Boards, Commissions & Council



Community Engagement

- 6 Scope of Work development meetings
- 5 public meetings
- Board and Commission process
- Media releases
- Monthly newsletters throughout entire process placed in libraries and recreation centers
- Email notices
- City website and project website
- Signage in Cemeteries
- Extensive outreach through more than 70 social media outlets
- Interviews with 25 Stakeholders
- Speak-up Austin Surveys: Programming and Burial Options
- Outreach targeted to Community Registry, Austin Neighborhoods Council, Save Austin's Cemeteries, Preservation Austin, African-American Cultural Heritage District



Historic Cemeteries

Master Plan

Part I: Introduction

1. Introduction
2. Natural, Historical, and Cultural Contexts

Part II: Cemetery Management Guidelines

3. General Management Guidelines
4. Oakwood Cemetery
5. Oakwood Cemetery Annex
6. Plummers Cemetery
7. Evergreen Cemetery
8. Austin Memorial Park Cemetery

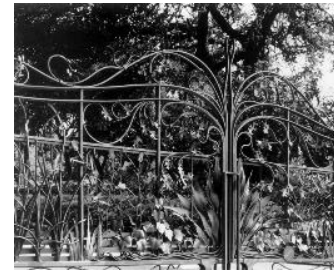
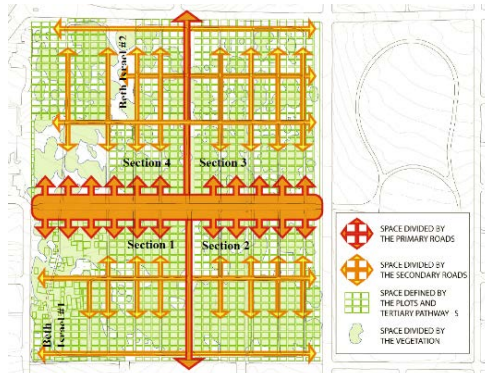
Part III: Policy and Funding Recommendations

9. Regulations and Laws
10. Cemetery Oversight
11. Emergency Preparedness
12. Historic Designations
13. Grave Ornamentation
14. Funding and Revenue
15. Partnerships and Programs

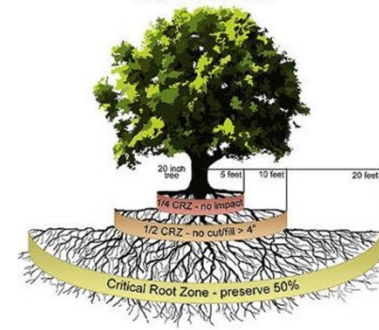


General Management Guidelines

- *Rehabilitation*
- *Spatial Organization and Circulation*
- *Vegetation, including trees*
- *Grave Markers, Plot Curbs, Plot Fencing*
- *Fences*
- *Site Furnishings*
 - *Benches, Signs and Kiosks*



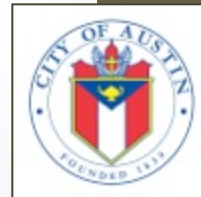
The Critical Root Zone - Development Impact Zones
Example: 20 inch diameter tree



General Management Guidelines

Rehabilitation

- *Document, document, document!*
- *Repair before replace*
- *Replace in-kind*
- *New work complements historic character*
 - *Differentiated from old*
 - *Compatible in material, size, scale, proportion, and massing*
 - *Subordinate to historic features*



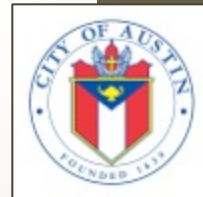
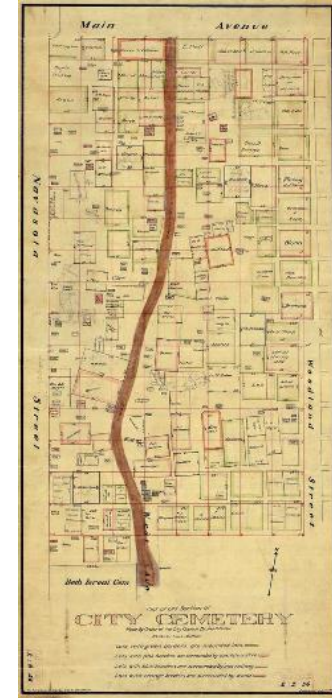
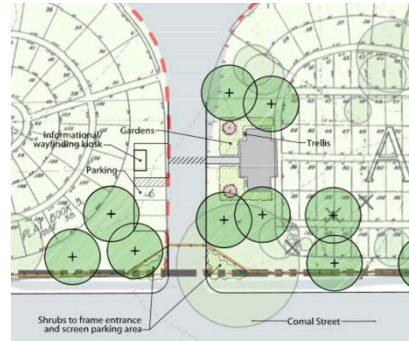
General Management Guidelines

Grave Markers, Plot Curbs, Plot Fencing—Prioritized into levels 1-3



Cemetery Treatment Guidelines for Individual Cemeteries

- Vegetation Conditions
- Marker Conditions
- Drainage
- Buildings and Facilities
- Appearance
- Boundary fencing and screening
- Wayfinding and interpretation
- Preservation and protection
- Visitor amenities
- Entrance and Access
- Vulnerability
- Expansion



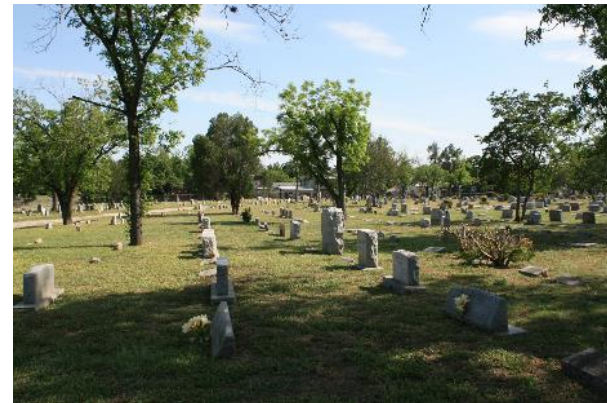
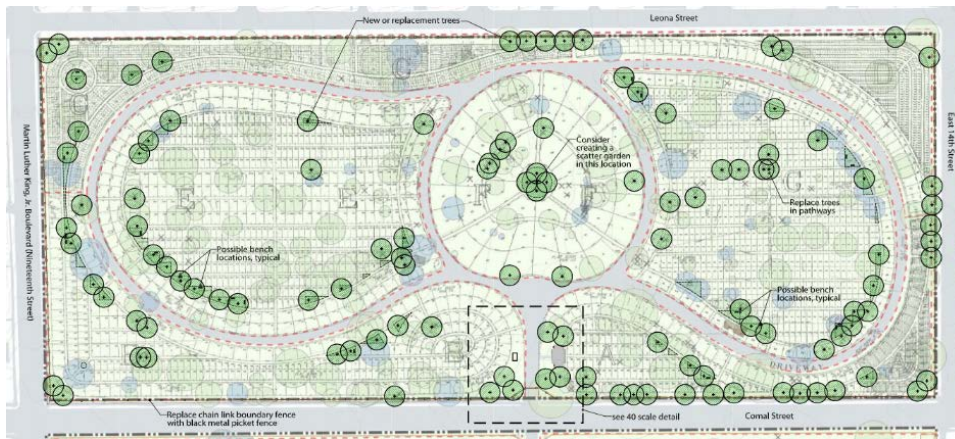
Cemetery Treatment Guidelines

Oakwood Cemetery



Cemetery Treatment Guidelines

Oakwood Annex Cemetery



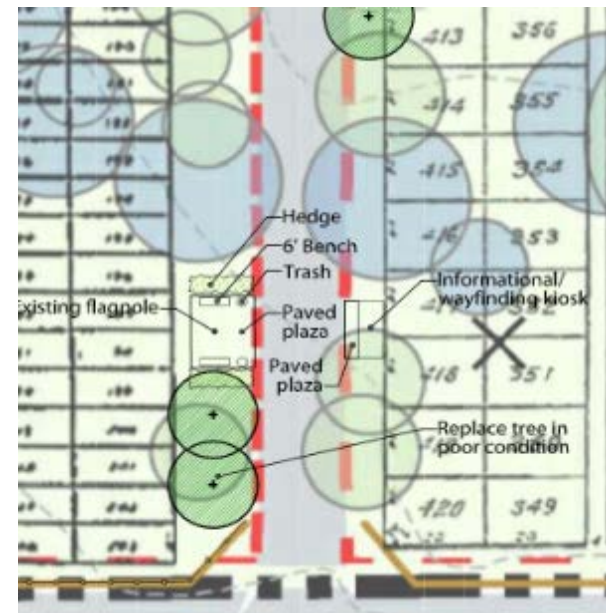
Cemetery Treatment Guidelines

Plummers Cemetery



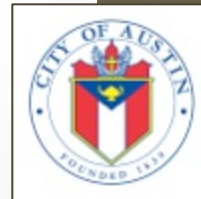
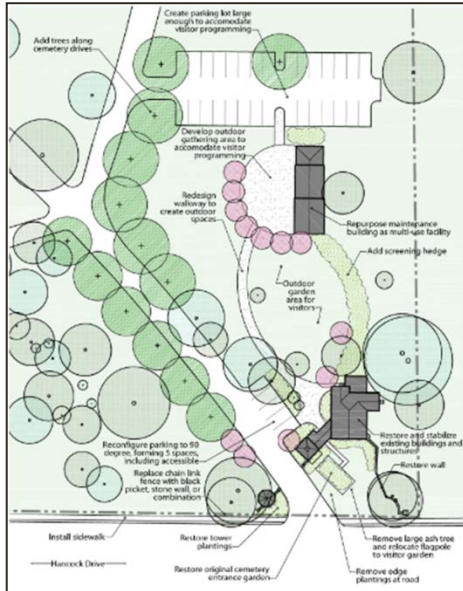
Cemetery Treatment Guidelines

Evergreen Cemetery



Cemetery Treatment Guidelines

Austin Memorial Park Cemetery



Historic Cemeteries Master Plan

Part III: Policy and Funding Recommendations

9. Regulations and Laws
10. Cemetery Oversight
11. Emergency Preparedness
12. Historic Designations
13. Grave Ornamentation
14. Funding and Revenue
15. Partnerships and Programs



Programming Basics

- Educational
 - For children and adults
 - Cemeteries as a lens through which people can understand Austin's history
 - Opportunities to study decorative arts (sculpture, photography)
 - Exploration of different cultural traditions in a diverse community
 - Based on best practices and proven successful programs from around the United States
- Recreation = leisure; something you do in your spare time
 - Primarily for adults
 - Only activities that are respectful of the cemeteries
 - Nothing that would damage the natural or built environment



Process Going Forward

Please note that this is a tentative timeframe and subject to change:

- April, 2015: Present draft plan to Urban Forestry Board & Historic Landmark Commission
- May, 2015: Present final draft plan to Land Facilities & Program Committee, Parks and Rec Board; Urban Forestry Board action
- June, 2015: Present final draft plan to Planning Commission & Open Space, Environment & Sustainability Committee of the Austin City Council
- Summer, 2015: Present final draft plan to the Austin City Council

