

# CSBG Needs Assessment Overview

Austin/Travis County Health and Human Services Department  
Presentation to the City of Austin Community Development Commission  
May 12, 2015  
Maria Allen, HHS Manager, Neighborhood Services Unit

## Overview

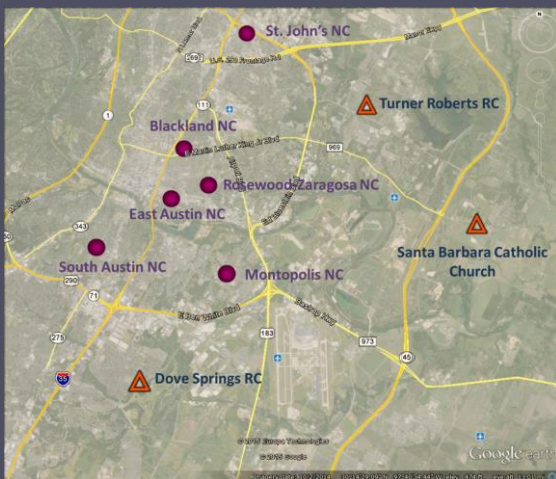
---

- ◉ Another Needs Assessment?
- ◉ Needs Assessment Activities
- ◉ Preliminary Findings and Considerations
- ◉ Next Steps

## Background & Justification

- Austin/Travis County HHSD serves as the Community Action Agency (CAA) for Travis County and receives federal Community Services Block Grant Funds (CSBG) funds passed through the Texas Department of Housing & Community Affairs (TDHCA)
- Federal regulations require CAA's to conduct needs assessments and use the results to design programs to meet community needs.
- The Community Development Commission serves as the required CSBG Advisory Board and must approve the needs assessment plan and accept the final completed assessment

## Where are CSBG Services Currently Offered?



Currently, there are 6 Neighborhood Centers utilizing CSBG funding to support basic needs, employment support, case management and public health nursing services.

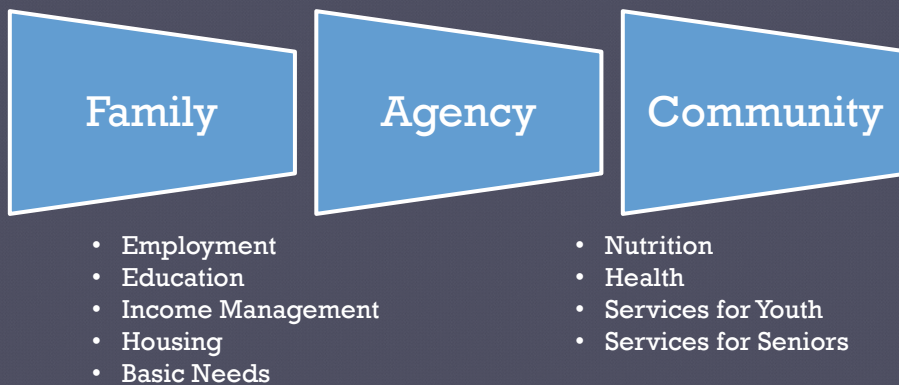
In addition, CSBG services are provided at Turner-Roberts Recreation Center (Colony Park), Dove Springs Recreation Center and Santa Barbara Catholic Church (Hornsby Bend)



## TDHCA Community Needs Assessment Standards

- Conducted every 3 years
- Collects current poverty data and its prevalence related to gender, age, and race/ethnicity
- Collects and analyzes both qualitative and quantitative data on its service areas
- Includes key findings on the causes and conditions of poverty and the needs
- Governing board formally accepts the completed assessment
- Informs an outcome-based and anti-poverty focused Community Action Plan
- Customer satisfaction data and input identified is considered in the strategic planning process

## CSBG National Framework & Service Categories



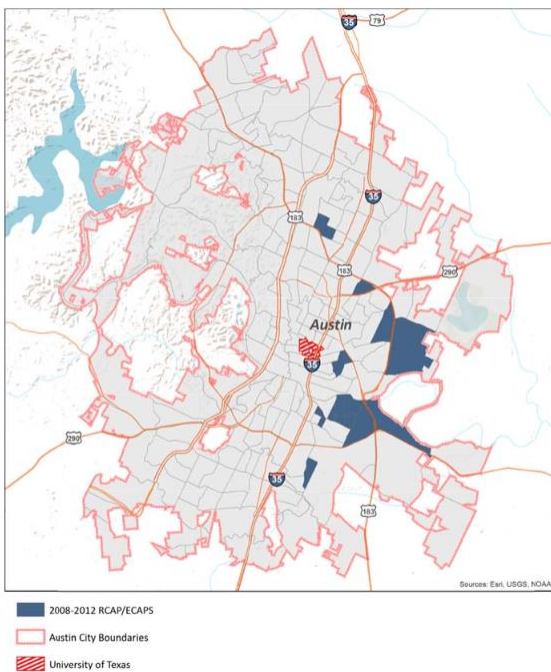
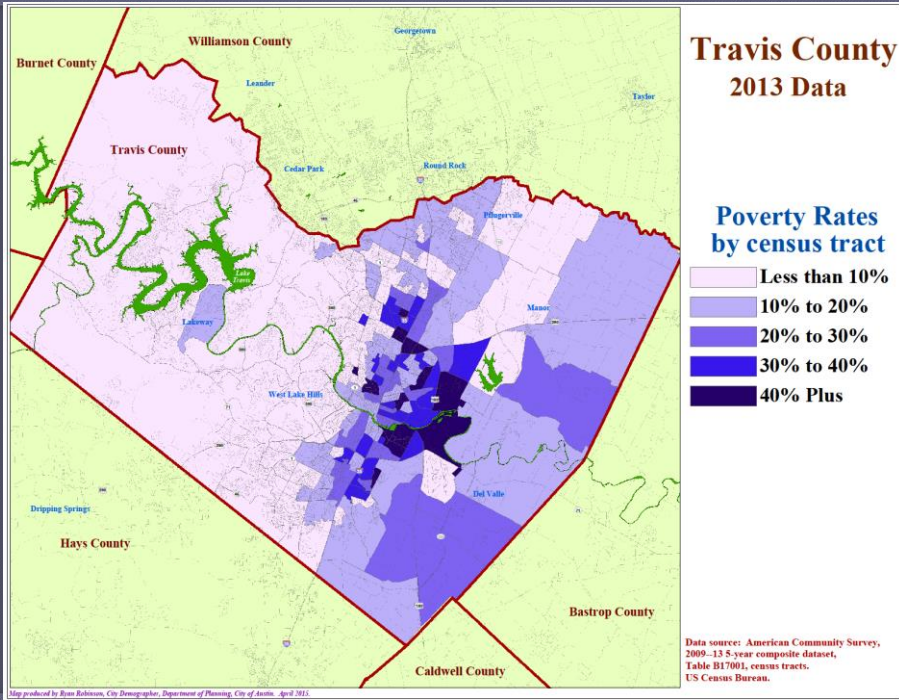
## Needs Assessment Plan

1. Initial Preparation
2. Collect Qualitative Data
  - Key informant interviews (CDC members, elected officials)
  - Online/Paper survey in English & Spanish (clients, residents, others)
  - Service Providers
3. Collect Quantitative Data
  - Community Commons database
  - Census data
  - Other community reports/maps
4. Analyze Data
  - Coordination with NHCD Action Plan Needs Assessment Process
  - Requirement to rank top 5 community needs
5. Develop and Finalize Report
  - Report due to TDHCA by June 30, 2015

## Preliminary Findings

- Trend of suburbanization of poverty in the city and county is evident.
- However, the areas of high poverty concentration are still located in incorporated Travis County and the City of Austin.
- The highest concentrations of poverty in Austin (excluding UT) are found in north Austin (Rundberg & St. John), far east and northeast Austin (Colony Park), and southeast Austin (Montopolis and Dove Springs).
- There are 14 areas of racially and ethnically concentrated areas of poverty in Austin in 2012 as compared to three in 2000.





### Racially and Ethnically Concentrated Areas of Poverty (RCAPS/ECAPs) by Census Tract, Austin, 2012

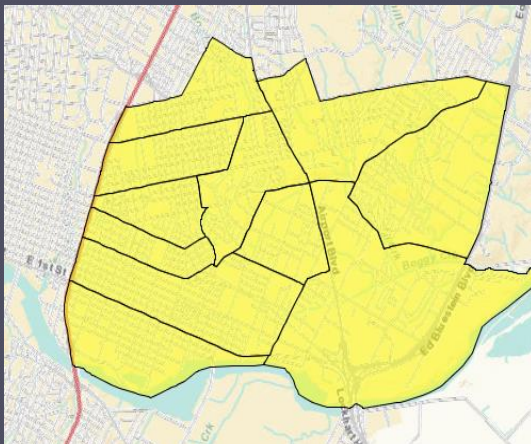
Source: City of Austin  
Draft Analysis of  
Impediments to Fair  
Housing Report (AI);  
Appendix A, p.7



## Considerations

- Currently, there are seven designated areas which represent persons who are low-income on the Community Development Commission (CDC).
- As required by CSBG, at least one-third of the CDC must represent persons who are low-income.
- Demographic shifts which have occurred over the past five years indicate changes are needed to better represent persons who are low-income.

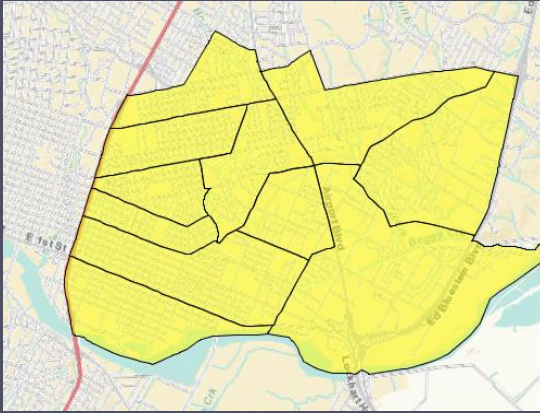
## East Austin Census Data and Preliminary Recommendations



- Currently, the CDC has seats representing both East Austin and Rosewood-Blackland areas which are adjacent to each other.
- Due to demographic shifts that have been occurring since the 2010 needs assessment was conducted, poverty rates are declining in these areas.

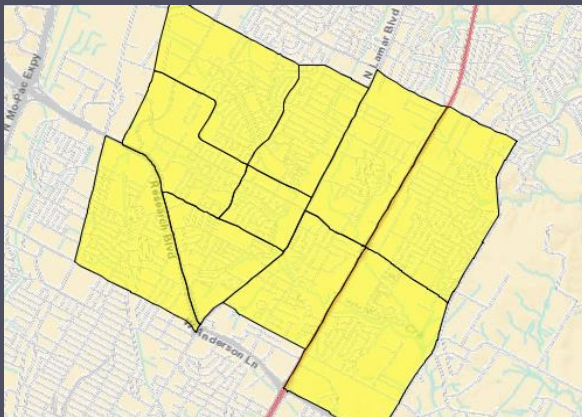


## East Austin Census Data and Preliminary Recommendations (cont.)



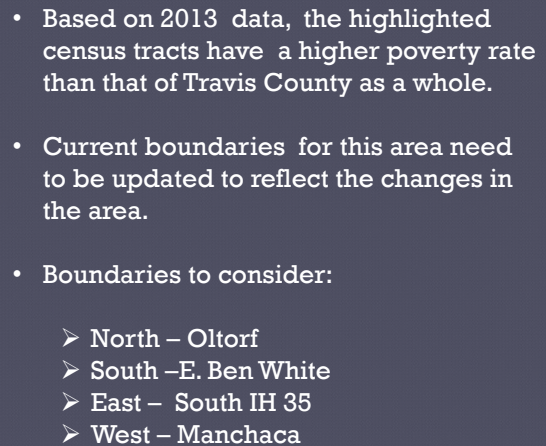
- Based on these changes, an option to consider is:
- Combine East Austin with Rosewood-Blackland to form a single East Austin designated area.

## North Austin Census Data and Preliminary Recommendations



- Based on 2013 data, the highlighted census tracts have a higher poverty rate than that of Travis County as a whole.
- Boundaries to consider:
  - North – Braker
  - South – 183/Anderson Lane
  - East – Cameron/Dessau
  - West – Burnet Road





## Next Steps for the CDC

- **Consideration and Approval of the Plan for the Community Needs Assessment**
- **Consideration and Possible Action on recommended changes to CDC designated areas to move forward to City Council**



## Next Steps for the CDC (cont.)

---

- ◉ June CDC meeting –
  - ◉ Presentation, Review and Recommendations for Final Approval of the CSBG Needs Assessment
  - ◉ Update and Possible Action on changes to responsible organizations to hold nomination/elections in designated areas