

SUBDIVISION REVIEW SHEET

C10
R

CASE NO.: C8-2015-0045.0A

P.C. DATE: 07/14/2015

SUBDIVISION NAME: RREEF Domain Lot E Subdivision

AREA: 70.982 Acres

LOT(S): 2

OWNER/APPLICANT: RREEF Domain, LP
(Chad Marsh)

AGENT: Bury-Aus, Inc.
(Allison Lehman)

ADDRESS OF SUBDIVISION: 2900 PALM WAY

GRIDS: MK34

COUNTY: Travis

WATERSHED: Walnut Creek

JURISDICTION: Full-Purpose

EXISTING ZONING: N/A

MUD: N/A

NEIGHBORHOOD PLAN: North Burnet

DISTRICT: 7

PROPOSED LAND USE: Commercial

VARIANCES: None

SIDEWALKS: Sidewalks will be provided on both sides of all internal streets and the subdivision side of boundary streets.

DEPARTMENT COMMENTS: The request is for approval of the RREEF Domain Lot E Subdivision. The proposed plat is composed of 2 lots on 70.982 acres. The applicant proposes to resubdivide the existing 67.1 acre Lot 2A and create a new lot, Lot "E", proposed for commercial use. All City utilities are available to the site. The developers will be responsible for all costs associated with any required improvements.

STAFF RECOMMENDATION: The staff recommends approval of the plat. This plat meets all applicable State and City of Austin LDC requirements.

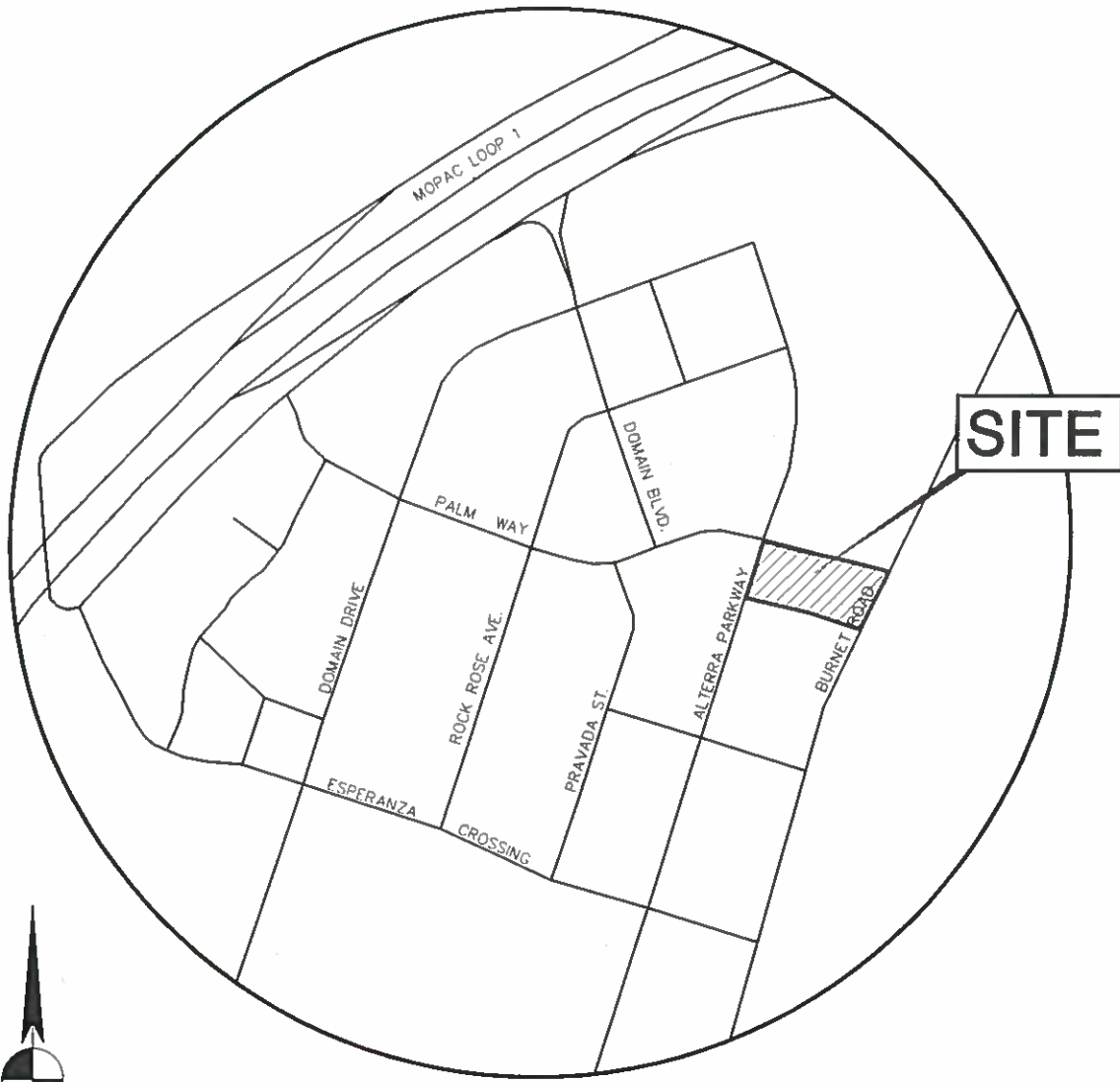
PLANNING COMMISSION:

CITY STAFF: Don Perryman

PHONE: 512-974-2786

E-MAIL: don.perryman@austintexas.gov

C19/2



BURY

221 West Sixth Street, Suite 600
Austin, Texas 78701
Tel (512) 328-0011 Fax (512) 328-0325
TBPE # F-1048 TBPLS # F-10107500
Copyright © 2015

LOT E SUBDIVISION

ENDEAVOR REAL ESTATE GROUP

SITE LOCATION MAP

DATE: 2/16/2015

SCALE: N.T.S.

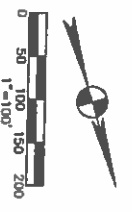
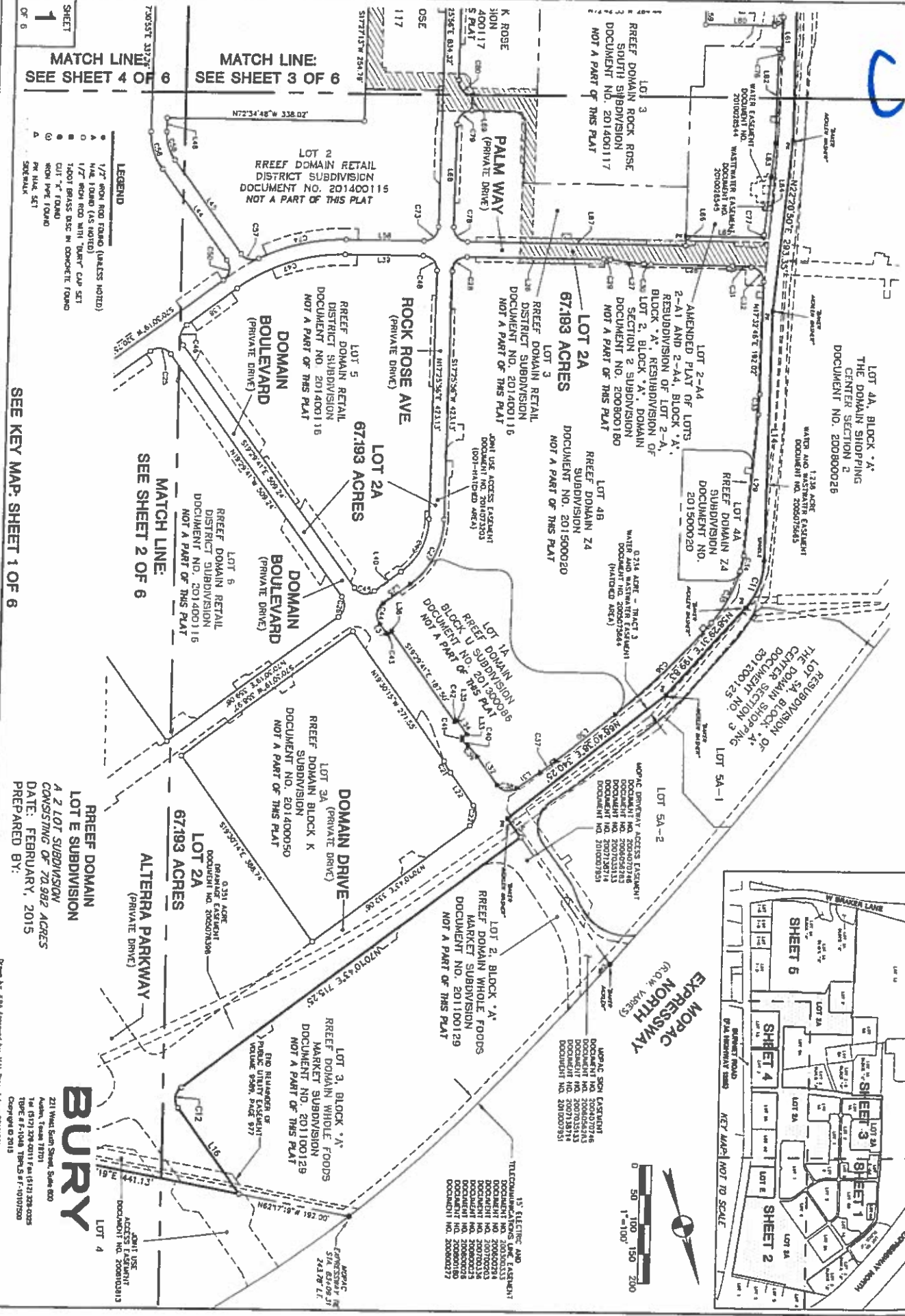
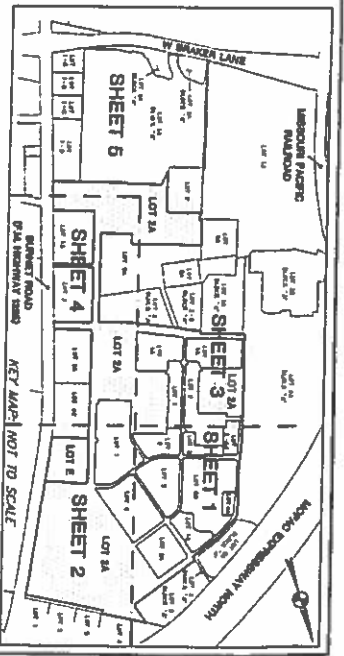
DRAWN BY: ARL

FILE

PROJECT No. 101231.110071

0133

RREEF DOMAIN LOT E SUBDIVISION
 BEING A RESUBDIVISION OF LOT 2A, RREEF DOMAIN LOT J SUBDIVISION



SEE KEY MAP: SHEET 1 OF 6

RREEF DOMAIN
 LOT E SUBDIVISION
 A 2 LOT SUBDIVISION
 CONSISTING OF 70.982 ACRES
 DATE: FEBRUARY, 2015
 PREPARED BY:

BURY

211 West Sixth Street, Suite 800
 Austin, Texas 78701
 Tel: (512) 291-1111 Fax: (512) 291-0225
 TOLL FREE: 1-800-368-5177
 Copyright © 2015

C8-2015-00450A

REEF DOMAIN LOT E SUBDIVISION
BEING A RESUBDIVISION OF LOT 2A, REEF DOMAIN LOT J SUBDIVISION

MATCH LINE:
SEE SHEET 3 OF 6

MATCH LINE:
SEE SHEET 4 OF 6

LOT 2
REEF DOMAIN RETAIL
DISTRICT SUBDIVISION
DOCUMENT NO. 201400116
NOT A PART OF THIS PLAT

LOT 5
REEF DOMAIN RETAIL
DISTRICT SUBDIVISION
DOCUMENT NO. 201400116
NOT A PART OF THIS PLAT

DOMAIN
BOULEVARD
(PRIVATE DRIVE)

LOT 6
REEF DOMAIN RETAIL
DISTRICT SUBDIVISION
DOCUMENT NO. 201400116
NOT A PART OF THIS PLAT

LOT 3A (PRIVATE DRIVE)
REEF DOMAIN BLOCK K
DISTRICT SUBDIVISION
DOCUMENT NO. 201400030
NOT A PART OF THIS PLAT

DOMAIN DRIVE
(PRIVATE DRIVE)

LOT 2A
67.193 ACRES

MATCH LINE:
SEE SHEET 1 OF 6

LOT 2A
67.193 ACRES

ROCK ROSE AVENUE
(PRIVATE DRIVE)

LOT 2A
67.193 ACRES

ALTERRA PARKWAY
(PRIVATE DRIVE)

LOT 3, BLOCK 'A'
REEF DOMAIN WHOLE FOODS
MARKET SUBDIVISION
DOCUMENT NO. 201100129
NOT A PART OF THIS PLAT



AMENDED PLAT OF LOTS 1
AND 2, BLOCK 'A', 184
SUBDIVISION EAST
DOCUMENT NO. 201200035

LOT E
PALM WAY
(PRIVATE DRIVE)

3.789 ACRES

PUBLIC UTILITY EASEMENT
DOCUMENT NO. 200728280

ALTERRA PARKWAY
(PRIVATE DRIVE)

LOT 1
REEF DOMAIN RETAIL
DISTRICT SUBDIVISION
DOCUMENT NO. 201400116
NOT A PART OF THIS PLAT

LOT 2A
67.193 ACRES

ROCK ROSE AVENUE
(PRIVATE DRIVE)

LOT 2A
67.193 ACRES

ALTERRA PARKWAY
(PRIVATE DRIVE)

BURNETT ROAD (F.M. HIGHWAY 1325)
(120' R.O.W.)

GAULT LANE

REEF DOMAIN
LOT E SUBDIVISION
A 2 LOT SUBDIVISION
CONSISTING OF 70.982 ACRES
DATE: FEBRUARY, 2015
PREPARED BY:

BURY

221 West Sixth Street, Suite 800
Austin, Texas 78701
Tel: (512) 224-0111 Fax: (512) 224-0222
Toll-free: 1-800-784-9171
Copyright © 2015

CG-2015-00450A

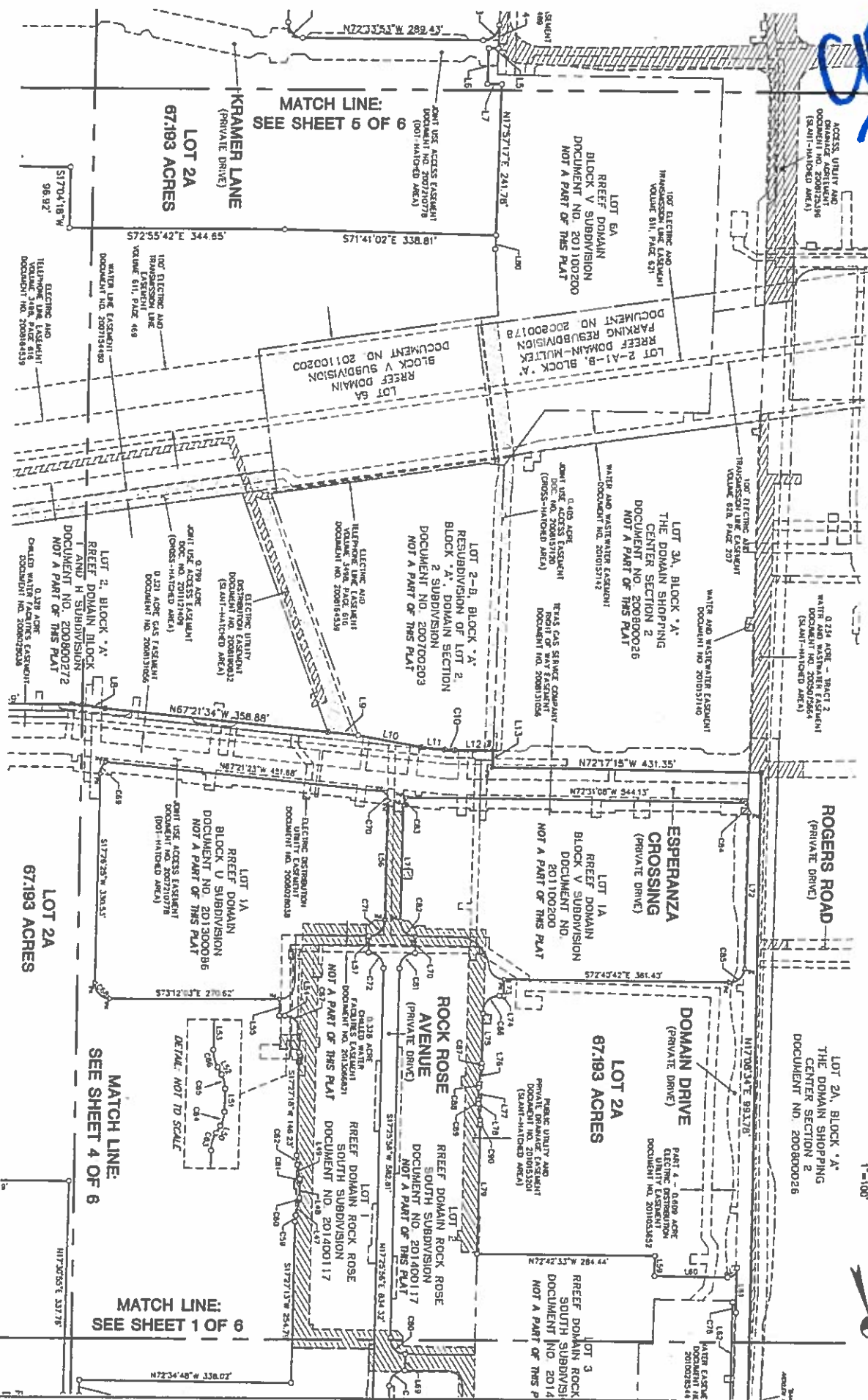
SHEET
2
OF 6

SEE KEY MAP: SHEET 1 OF 6

215

REEF DOMAIN LOT E SUBDIVISION

BECOMING A RESUBDIVISION OF LOT 2A, REEF DOMAIN LOT J SUBDIVISION



SEE KEY MAP: SHEET 1 OF 6

REEF DOMAIN
LOT E SUBDIVISION
A 2 LOT SUBDIVISION
CONSISTING OF 74.982 ACRES
DATE: FEBRUARY, 2015
PREPARED BY:

BURY

221 West Sixth Street, Suite 200
Austin, Texas 78701
Tel: (512) 226-0011 Fax: (512) 226-0223
http://www.bury.com
Copyright © 2015

CG-2015-00450A

MATCH LINE:
SEE SHEET 5 OF 6

013

KRAMER LANE
(PRIVATE DRIVE)
LOT 2A
67.193 ACRES

RREEF DOMAIN LOT E SUBDIVISION
BENG A RESUBDIVISION OF LOT 2A, RREEF DOMAIN LOT J SUBDIVISION

100' ELECTRIC AND
TRASSPORTS LANE
DOCUMENT NO. 2007134480
VOLUME 611, PAGE 489

LOT 5A
RREEF DOMAIN
BLOCK V SUBDIVISION
DOCUMENT NO. 201100200
NOT A PART OF THIS PLAT

KRAMER LANE
(PRIVATE DRIVE)
ALTEIRA PARKWAY
(PRIVATE DRIVE)

LOT 1A
RREEF DOMAIN BLOCK K
SUBDIVISION
DOCUMENT NO. 201400050
NOT A PART OF THIS PLAT

BURNET ROAD (F.M. HIGHWAY 1925)
(R.O.W. VARIES)

LOT 1, BLOCK 'A'
HARDAGE SUBDIVISION
DOCUMENT NO. 199900271
KRAMER LANE
(R.O.W. VARIES)

0.231 ACRE
GAS EXHAUST
DOCUMENT NO. 200811008

0.238 ACRE
WATER WREN FACILITY EXHAUST
DOCUMENT NO. 200807808

0.238 ACRE
WASTEWATER LANE EXHAUST
DOCUMENT NO. 200818009
(DOT-HATCHED AREA)

100' ELECTRIC AND
TRASSPORTS LANE
DOCUMENT NO. 200818009
(DOT-HATCHED AREA)

LOT 2, BLOCK 'A'
RREEF DOMAIN BLOCK
AND H SUBDIVISION
DOCUMENT NO. 200800272
NOT A PART OF THIS PLAT

RESUBDIVISION OF LOT 1A,
BLOCK 'A' AMENDED PLAT OF
LOTS 1 AND 2, BLOCK 'A'
IBM SUBDIVISION EAST
DOCUMENT NO. 201200036

RREEF DOMAIN
LOT E SUBDIVISION

LOT 1A
RREEF DOMAIN
BLOCK U SUBDIVISION
DOCUMENT NO. 201300086
NOT A PART OF THIS PLAT

LOT 2A
67.193 ACRES

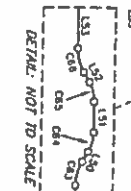
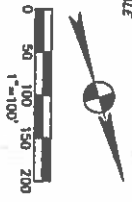
ALTEIRA PARKWAY
(PRIVATE DRIVE)

PART 1 - 0.014 ACRE
UTILITY EXHAUST
DOCUMENT NO. 201300082

15' ELECTRIC AND DOCUMENT LINE
NOT A PART OF THIS PLAT

1.080 ACRE
WASTEWATER LANE EXHAUST
DOCUMENT NO. 200807112

LOT 4B
AMENDED PLAT OF LOTS 2A
AND 4A RREEF DOMAIN
BLOCK V SUBDIVISION
DOCUMENT NO. 201300062
NOT A PART OF THIS PLAT



MATCH LINE:
SEE SHEET 2 OF 6

SEE KEY MAP: SHEET 1 OF 6

RREEF DOMAIN
LOT E SUBDIVISION
A 2 LOT SUBDIVISION
CONSISTING OF 70.982 ACRES
DATE: FEBRUARY, 2015
PREPARED BY:

BURY

221 Wood South Street, Suite 002
Austin, Texas 78701
Tel (619) 329-0111 Fax (619) 329-0225
TYPE E/F: 1048 TRPLS & F-10107500
Copyright © 2015

CB-2015-00450A

