

# CAN DASHBOARD 2015

Key socioeconomic indicators  
for Greater Austin & Travis County



# Community Advancement Network

---

CAN is a partnership of governmental, non-profit, private and faith-based organizations which leverage mutual resources to collectively improve social, health, educational and economic opportunities in our community.

# CAN partner organizations

- Austin Chamber of Commerce
- Austin Community College
- Austin ISD
- Austin Travis County Integral Care
- Capital Metro
- Central Health
- City of Austin
- City of Pflugerville
- Community Justice Council
- Del Valle ISD
- Goodwill Industries of Central Texas
- Greater Austin Asian Chamber
- Greater Austin Black Chamber
- Greater Austin Hispanic Chamber
- Huston Tillotson University
- interfaith Action Central Texas
- Manor ISD
- One Voice Central Texas
- Seton Healthcare Family
- St. David's Foundation
- St. Edward's University
- Travis County
- United Way for Greater Austin
- University of Texas at Austin
- Workforce Solutions - Capital Area





# can DASHBOARD



**We are safe,  
just & engaged**

- ▶ crime
- ▶ proportionality of jail bookings
- ▶ voting



**Our basic  
needs are met**

- ▶ low-income
- ▶ food security
- ▶ housing cost burdened
- ▶ vehicle miles traveled
- ▶ homelessness



**We are  
healthy**

- ▶ health insurance
- ▶ mental health
- ▶ smoking
- ▶ obesity
- ▶ air quality



**We achieve our  
full potential**

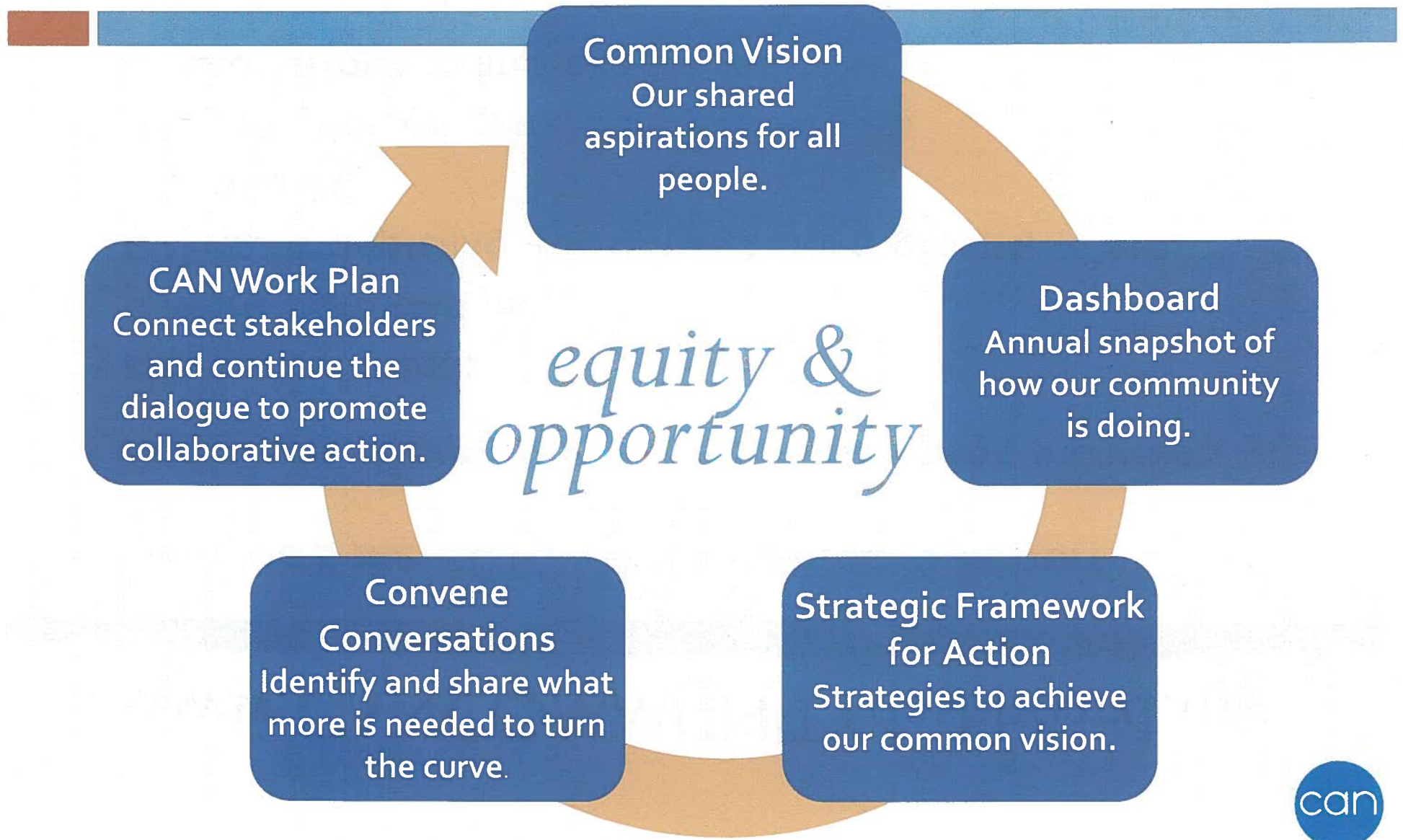
- ▶ school ready
- ▶ high school graduation
- ▶ college success
- ▶ unemployment

# www.CANCOMMUNITYdashboard.org



- Download the 2015 CAN Dashboard Report
- Find more information for each indicator, including...
  - ▣ Historical trends
  - ▣ More data and maps
  - ▣ Graphs depicting disparities among groups, where available
  - ▣ Information on vulnerable populations
  - ▣ Local efforts to improve the indicators

# Part of an annual process...





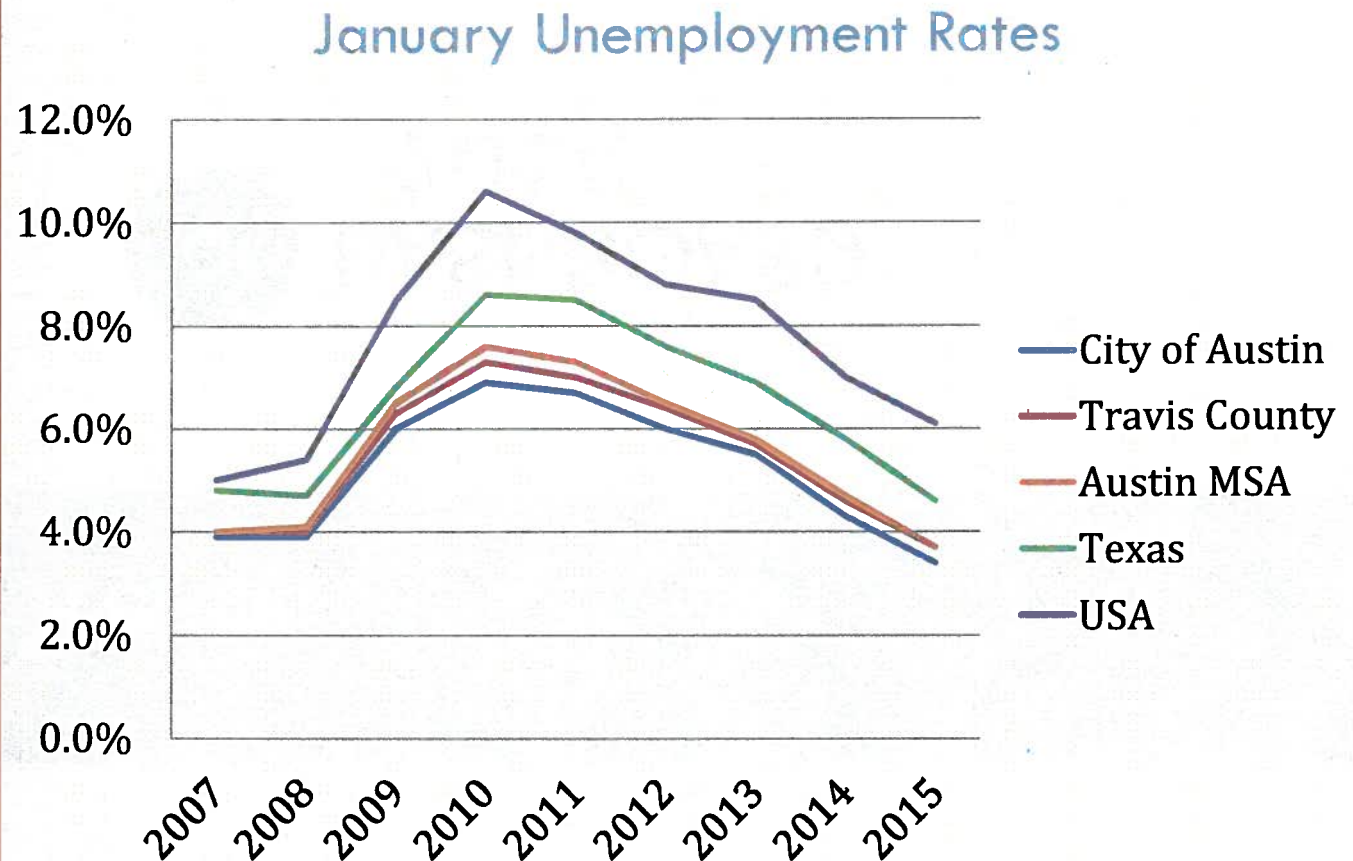
# Key Trends

## can DASHBOARD 2015



# Continued Recovery from Recession

In 2010, like the rest of the nation, our community was experiencing the impact of the Great Recession. Since then, many of CAN's indicators have improved, with eleven moving in a positive direction, and five meeting CAN's community targets.



Source: Texas Workforce Commission



# Recovery from the Great Recession

- ☐ Crime rate
- ☐ Percent low-income
- ☐ Percent housing cost burdened
- ☐ Vehicle miles traveled per capita
- ☐ People identified in annual homeless count
- ☐ Percent under 65 with no health insurance
- ☐ Percent who smoke
- ☐ Percent who graduate from high school
- ☐ Percent who earn a college degree in 6 years
- ☐ Unemployment rate



**BETTER**

# Recovery from the Great Recession

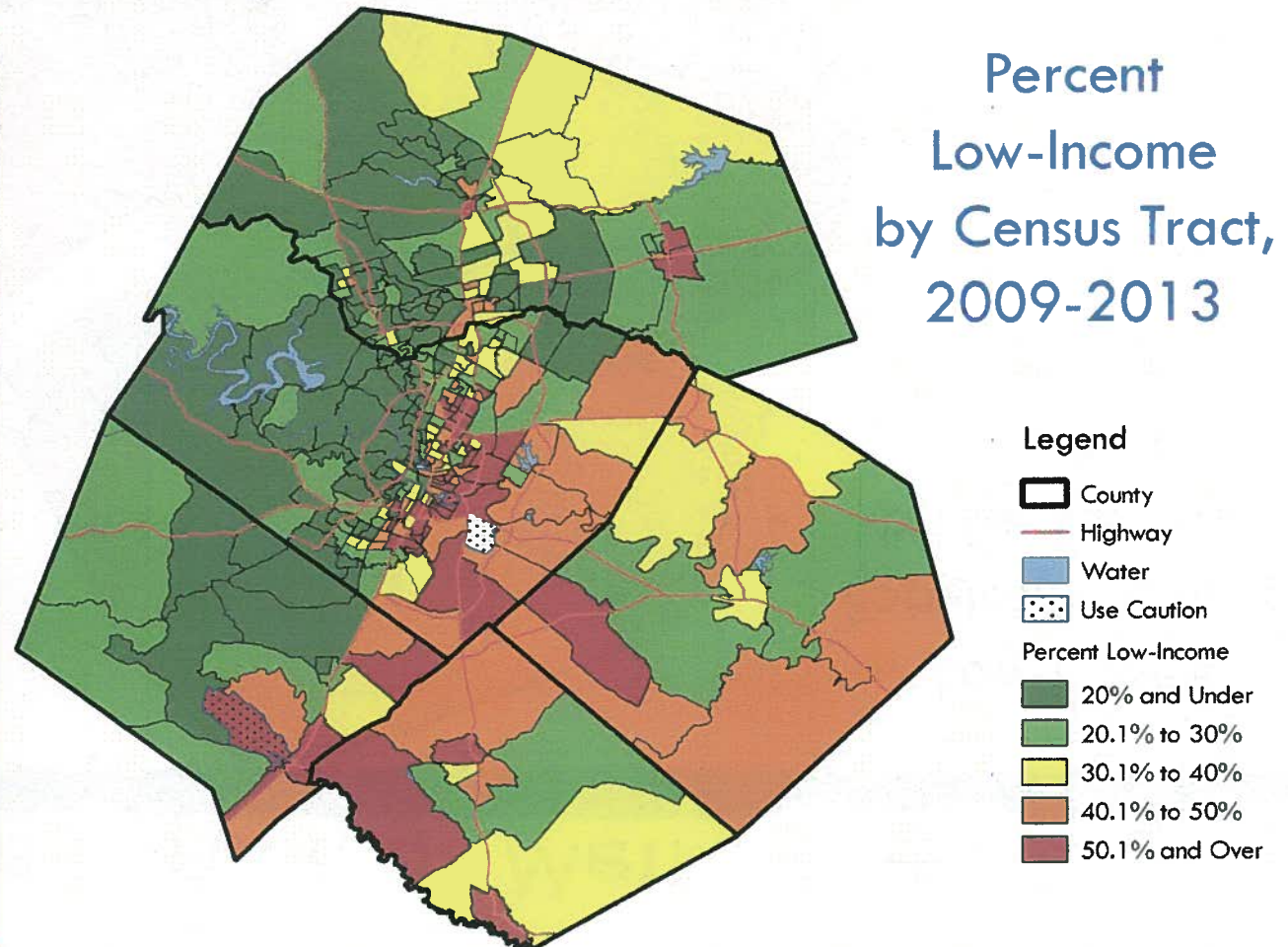
- ☒ Crime rate
- ☐ Percent low-income
- ☒ Percent housing cost burdened
- ☐ Vehicle miles traveled per capita
- ☐ People identified in annual homeless count
- ☒ Percent under 65 with no health insurance
- ☒ Percent who smoke
- ☐ Percent who graduate from high school
- ☐ Percent who earn a college degree in 6 years
- ☒ Unemployment rate

Met community  
target



# Economic Segregation

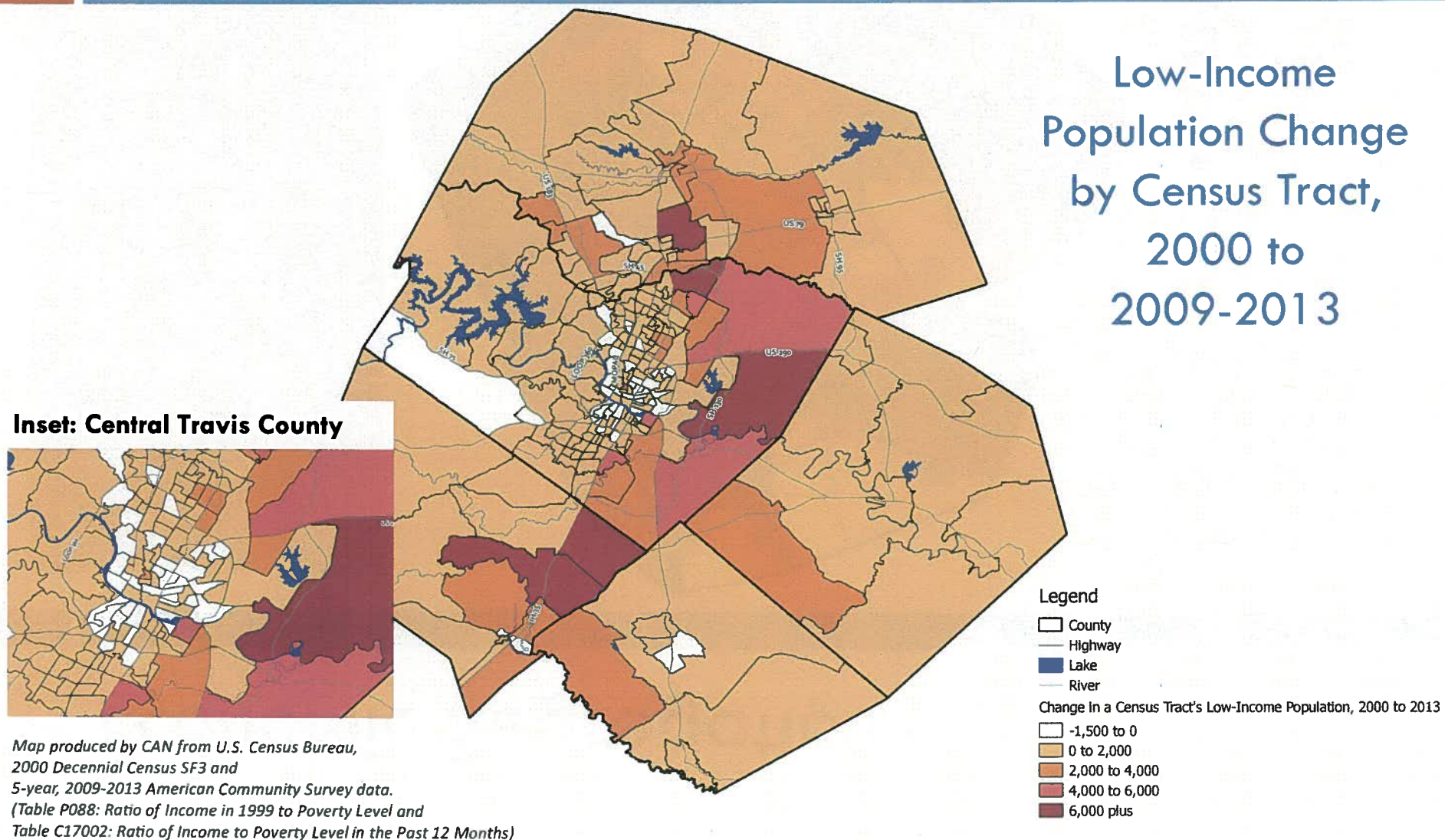
A 2015 study by the [Martin Prosperity Institute](#) found Austin to be the most economically-segregated large metro area in the country, particularly by educational level and occupation.



Source: American Community Survey, 5-year estimates

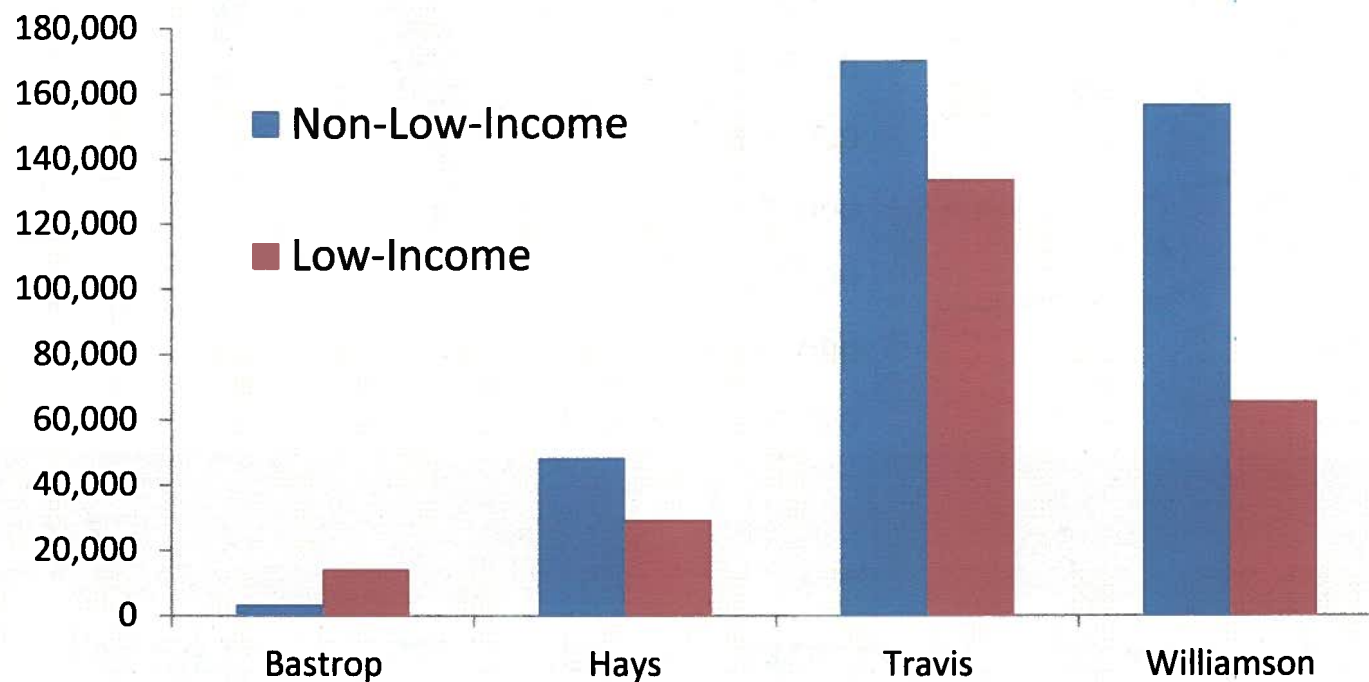


# Growth of Low-Income Populations in Eastern Portion of Metro Area



# Population growth by income

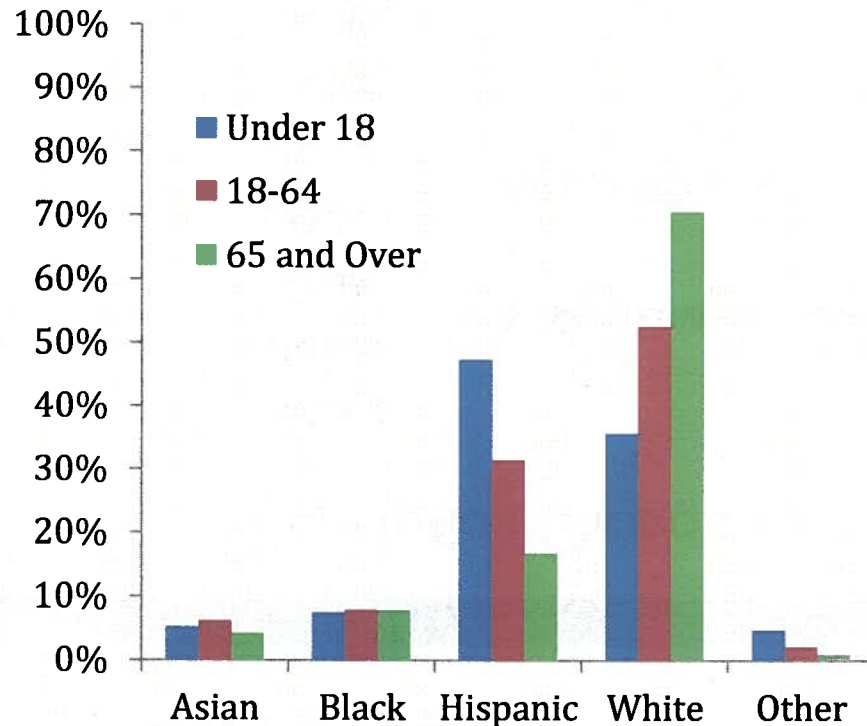
## Population Change by Income Status, 2000 to 2013



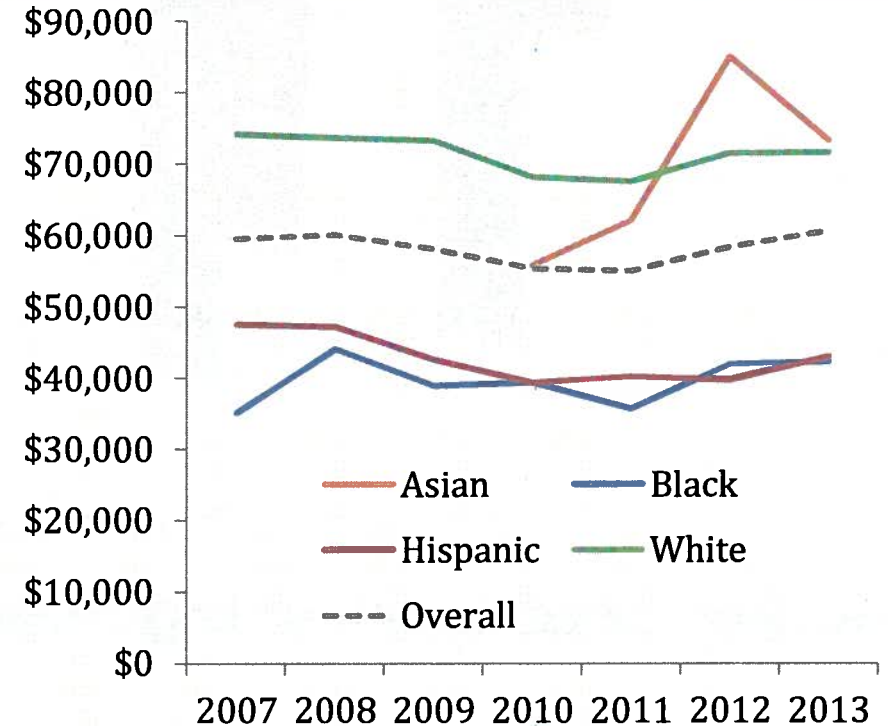
Source: American Community Survey,  
1-Year Estimates, and Decennial Census, Summary File 3

# Diversity and Disparity

**Race or Ethnicity by Age Group,  
Travis County 2013**



**Median Household Income,  
Travis County**



Source: American Community Survey, 1-Year Estimates



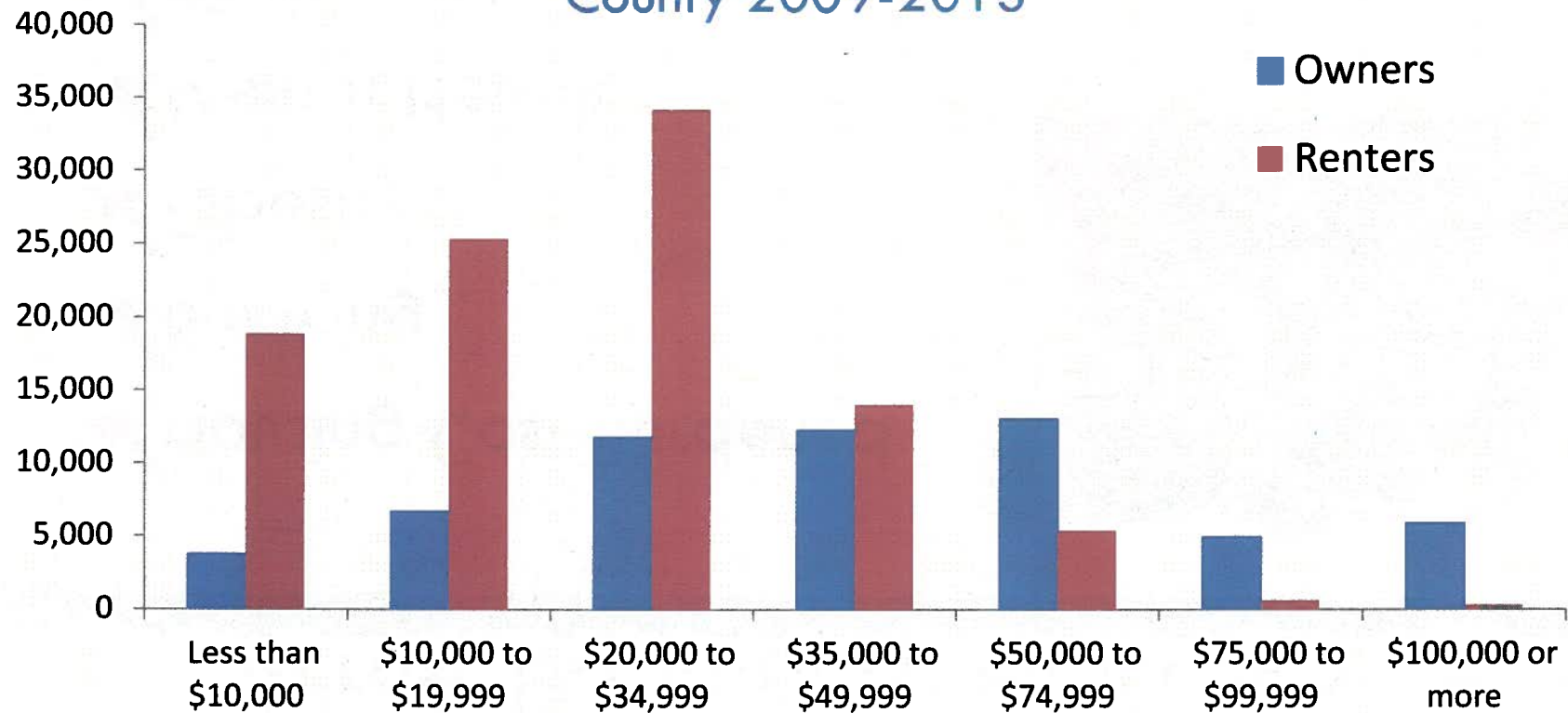
# People with Lower Incomes Fare Worse Across Dashboard Indicators

- ✓ Housing Cost-Burdened
- ✓ Smoking
- ✓ Obesity
- ✓ Mental Health
- ✓ Kindergarten Ready
- ✓ High School Graduation
- ✓ College Success



# Housing Cost-Burdened

Households spending more than 30% of income for housing, Travis County 2009-2013



Source: American Community Survey, 5-Year Estimates

# Occupations with the Largest Number of Employees, Austin MSA, 2014



Occupation	# employed	Median Annual Wage
Retail Salespersons	30,000	\$22,503
Office Clerks, General	27,700	\$30,667
Combined Food Preparation and Serving Workers	24,650	\$18,585
Customer Service Representatives	22,630	\$29,181
Waiters and Waitresses	18,400	\$18,371

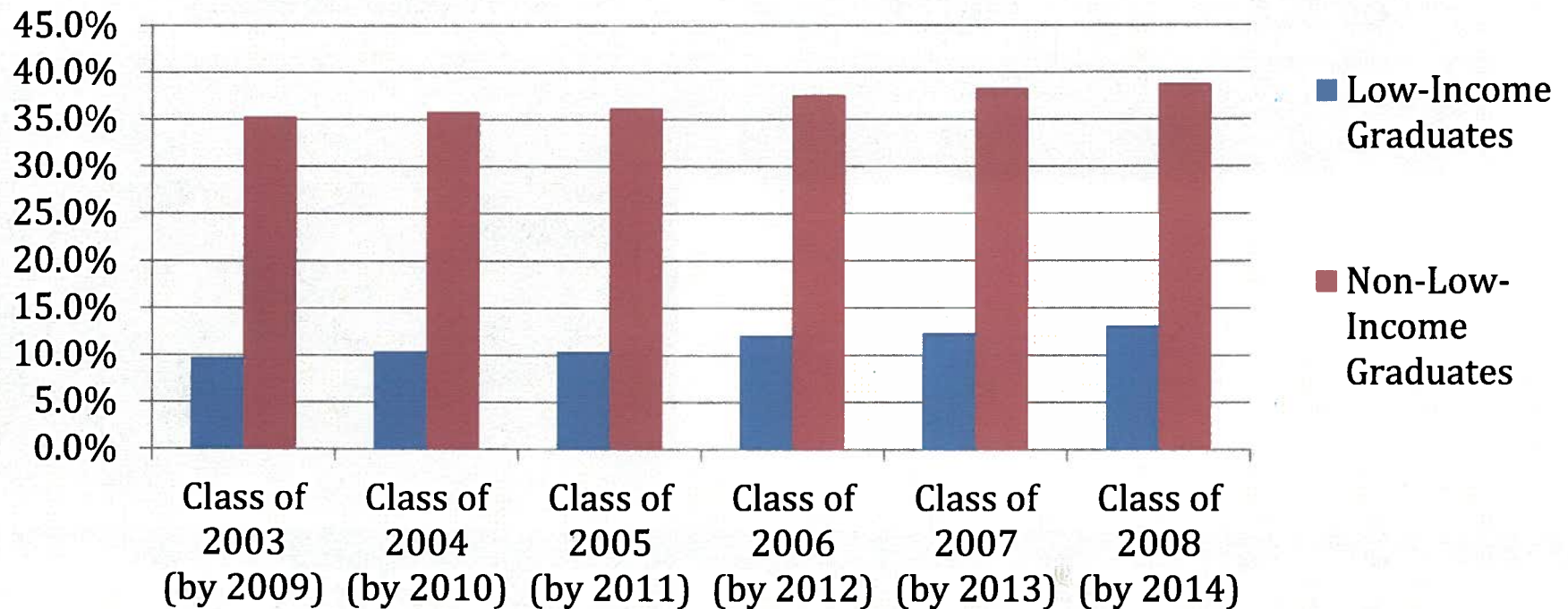
Source: Texas Workforce Commission, Occupational Employment Statistics Program





# Disparities in College Success

## Percent of Central Texas High School Graduates Who Earn a Post-Secondary Credential Within 6 Years



Source: E3 Alliance

# continuing the conversation

can DASHBOARD  
2015



# 2015 CAN Work Groups and Forums

---

- Cultural Competency, Diversity, and Inclusion Training and Work Group – completed spring 2015, next meeting June 26th
- Place-Based Planning Forums and Asset-Based Community Development Trainings- summer 2015
- Food Security Forums- late summer and fall 2015
- Community Council Person-Centered Care Summit- October 2015
- Regional Policy Summit- fall 2015



# Stay connected

- Visit [www.CANATX.org](http://www.CANATX.org) and sign up for our monthly email newsletter and other announcements and events
- Find more data and information online at [CANcommunityDashboard.org](http://CANcommunityDashboard.org)
- Like [Community Advancement Network](#) on Facebook
- Follow [CAN\\_Austin](#) on Twitter
- Invite us to your place of employment, non-profit, neighborhood group, place of worship, Rotary Club, etc. to share the Dashboard report and a conversation about our community

[Mary.Dodd@austinisd.org](mailto:Mary.Dodd@austinisd.org)

(512)414-0326

