



**AUSTIN/TRAVIS COUNTY HEALTH AND HUMAN SERVICES DEPARTMENT**



# **HEALTH AND HUMAN SERVICES COMMITTEE**

---

## **Racial and Ethnic Health Disparities and Food Deserts**

**August 3, 2015**

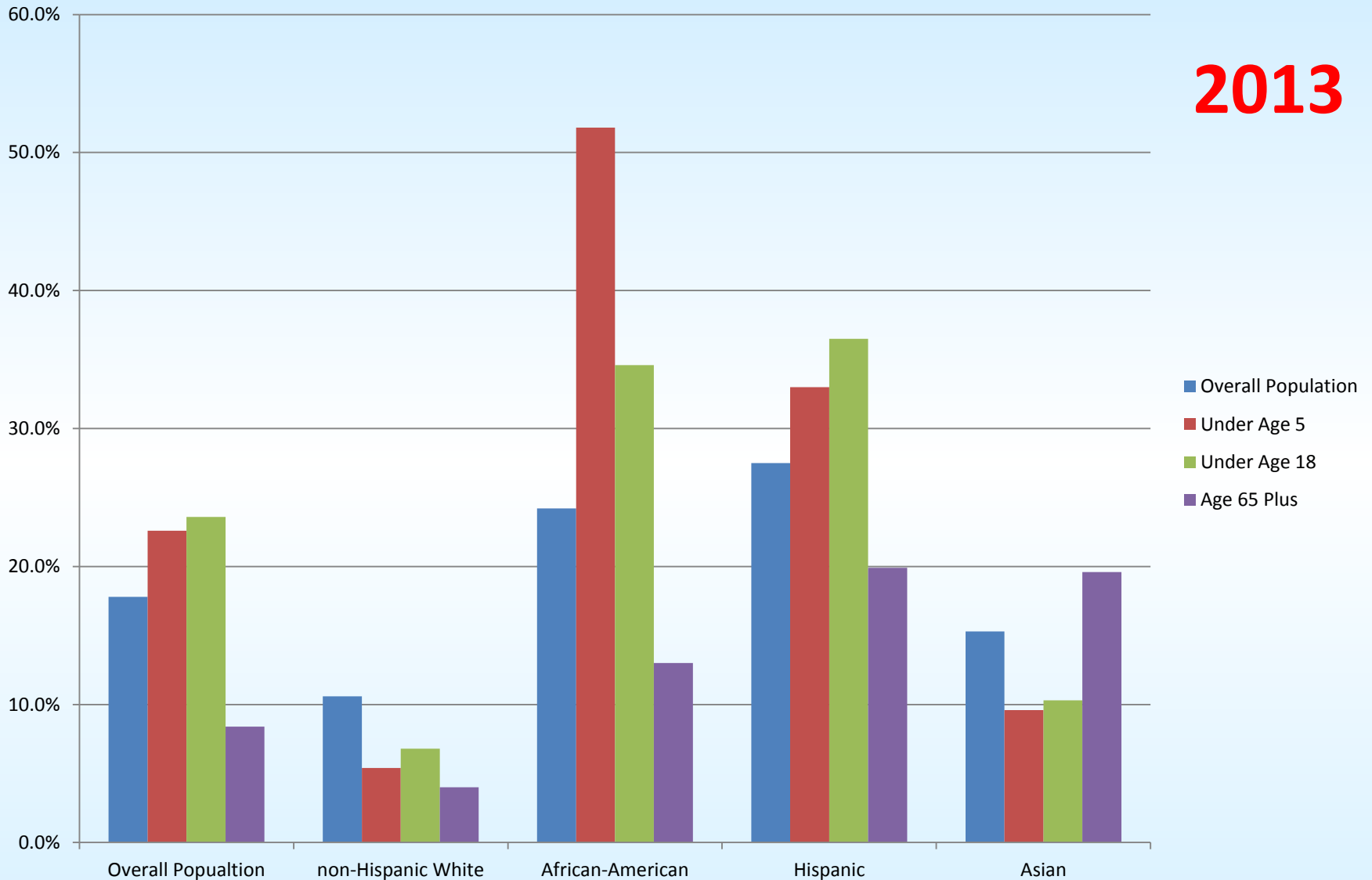
**Shannon Jones, III, Director, Austin / Travis County Health and Human Services**  
**Dr. Philip Huang, Medical Director, Austin / Travis County Health and Human Services**  
**Dr. Rosamaria Murillo, Assistant Director, Austin / Travis County Health and Human Services**  
**Stephanie Hayden, Assistant Director, Austin / Travis County Health and Human Services**

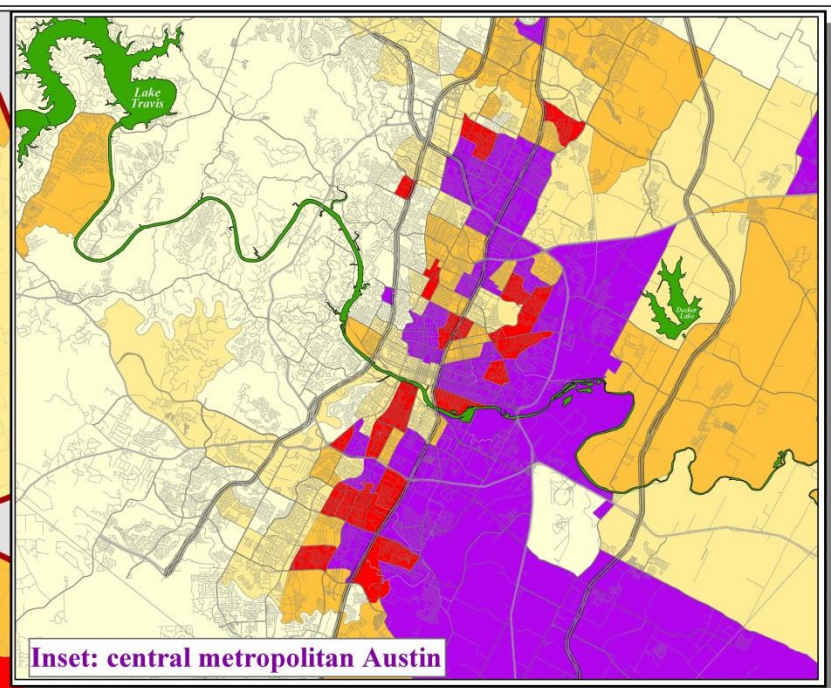
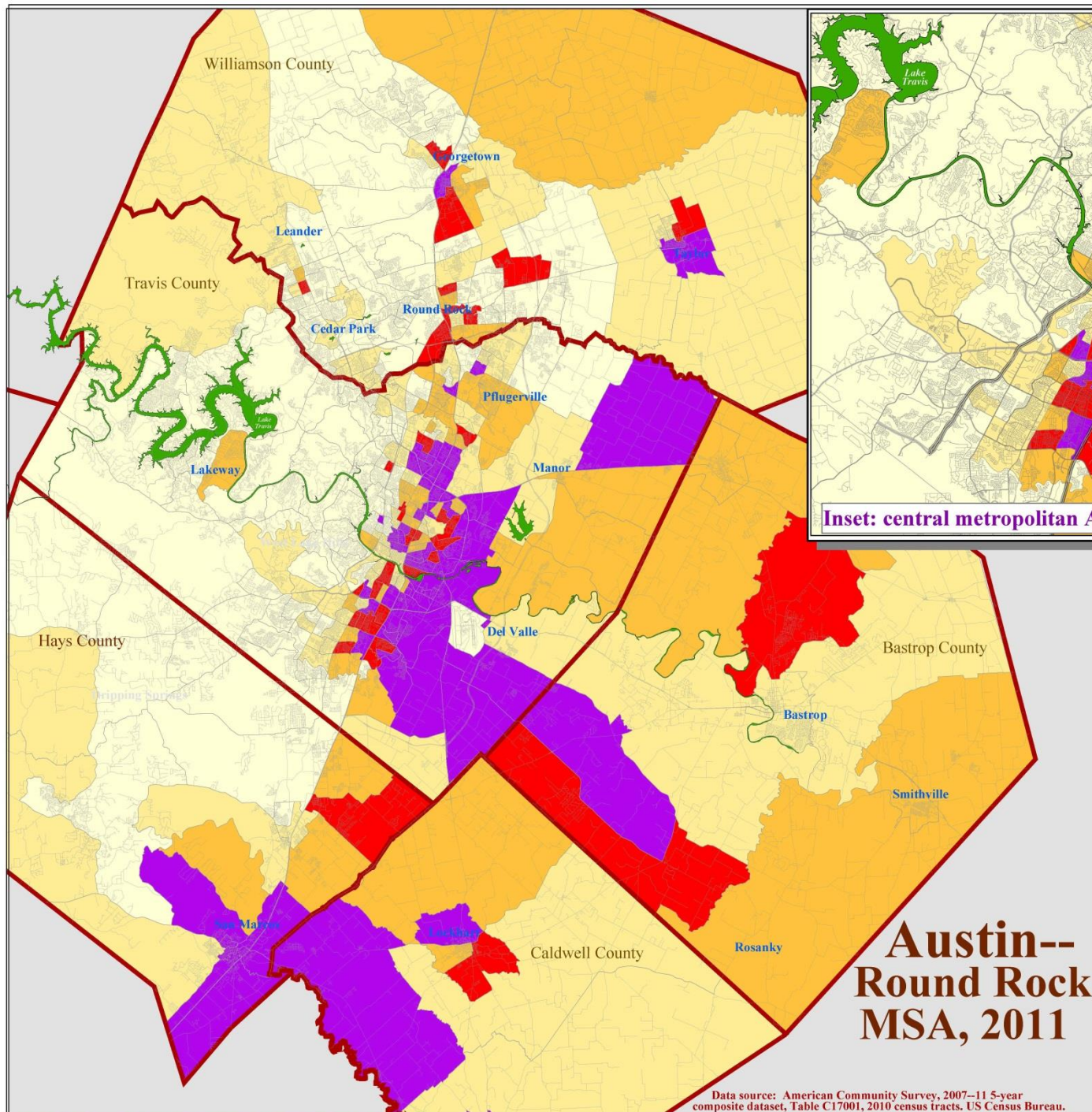
# Poverty Rates by Age Group, Race and Ethnicity

## City of Austin

American Community Survey, 2013, 1-year Estimates Series, Table B17001

2013

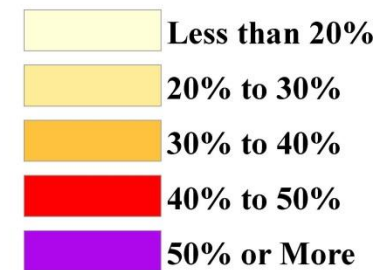




## Low-Income Population Concentrations

### Austin, Texas

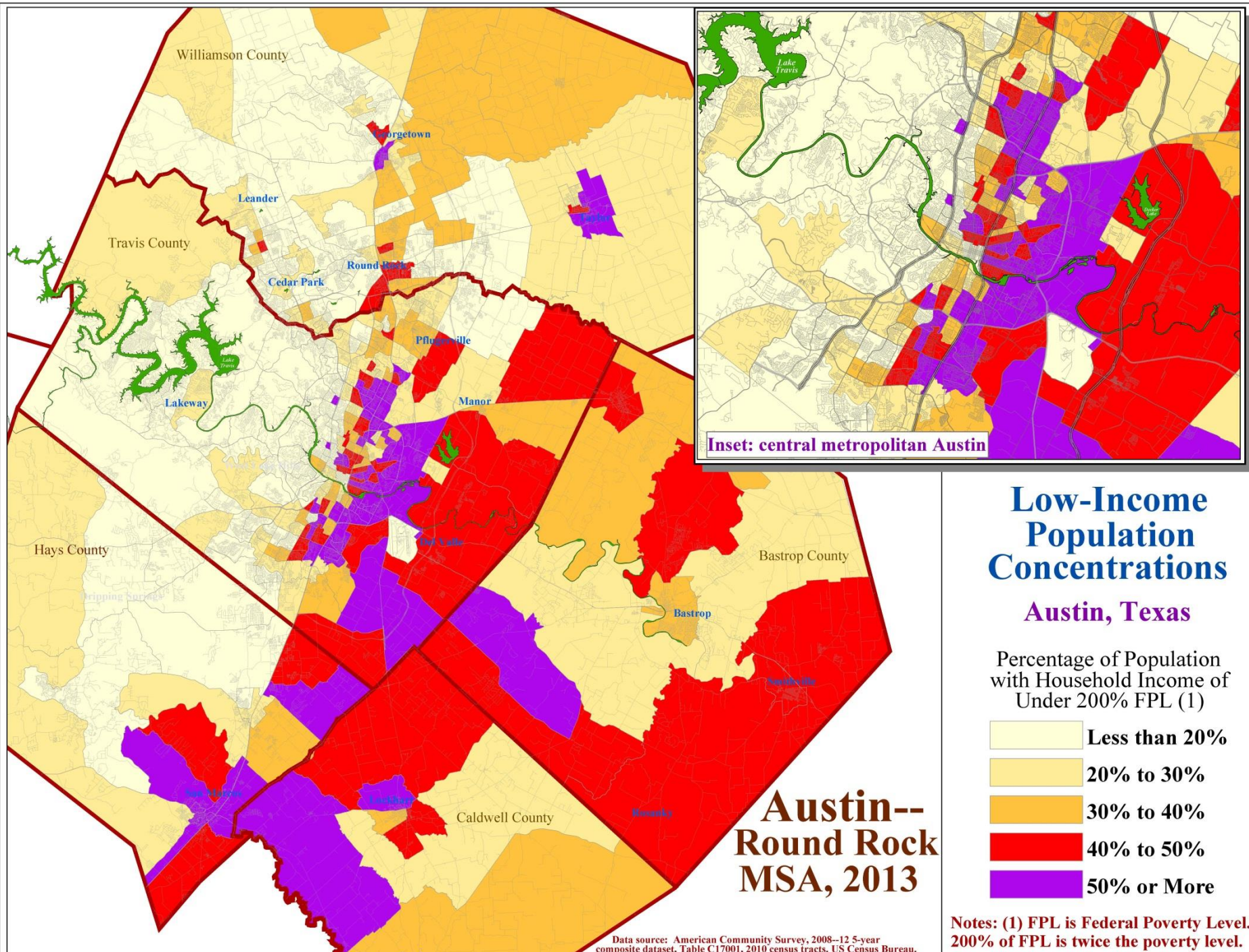
Percentage of Population  
with Household Income of  
Under 200% FPL (1)



**Notes: (1) FPL is Federal Poverty Level.  
200% of FPL is twice the poverty level.**

Data source: American Community Survey, 2007--11 5-year  
composite dataset, Table C17001, 2010 census tracts, US Census Bureau.





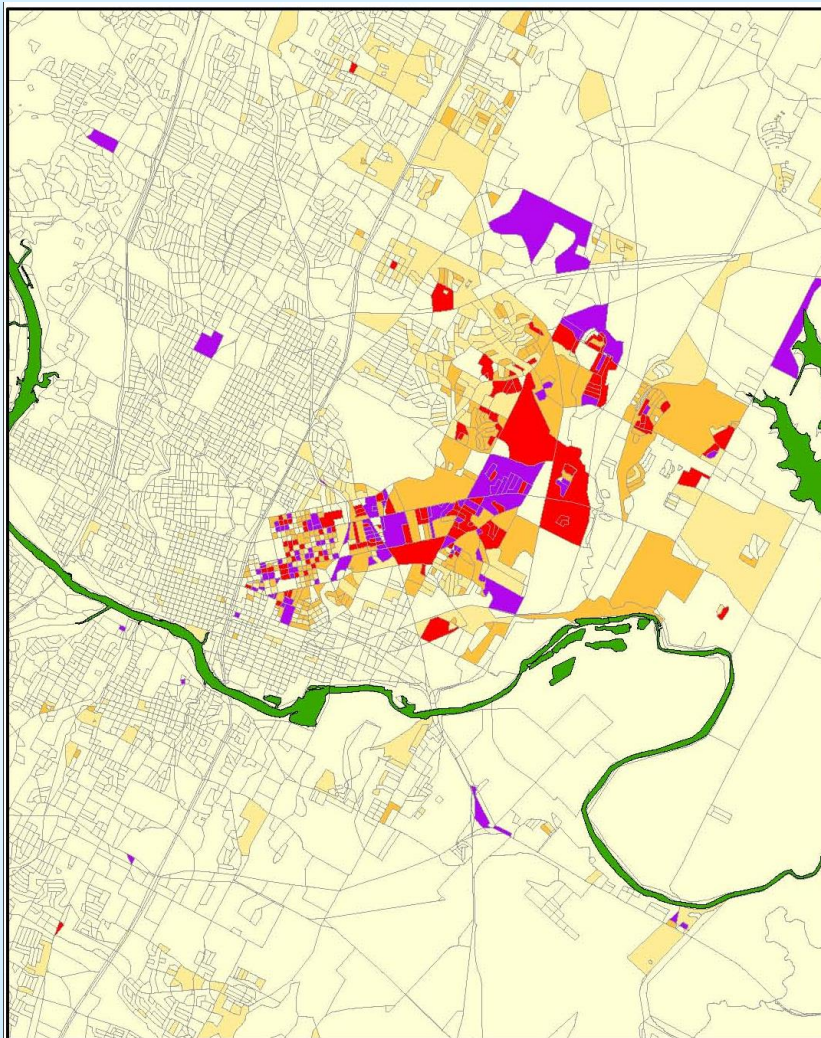




Austin/Travis County Health and Human Services Department

# *Changing African Americans Landscape – Urban Core*

## *African Americans Populations Concentrations, 2000 and 2010*

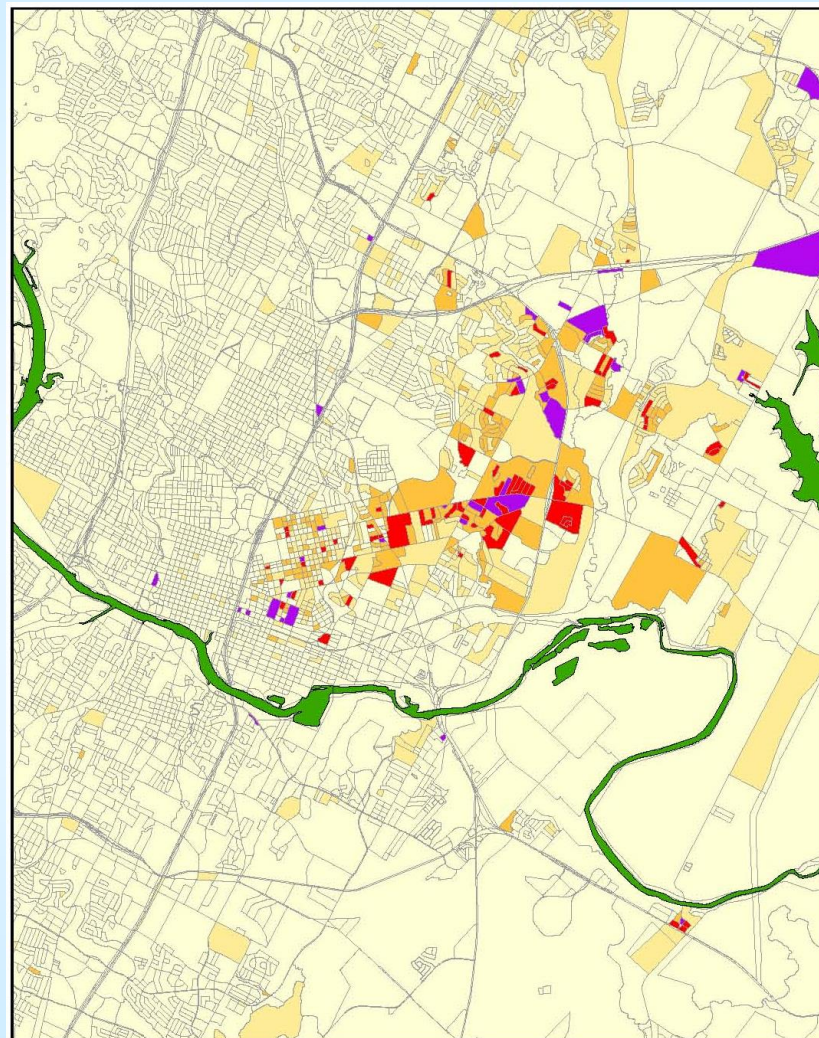


**Census 2000 Data**  
**Census Blocks**

Percentage of the  
Total Population  
that is  
African American

Less than 20%
20% to 40%
40% to 60%
60% to 80%
80% Plus

Map produced by Ryan Robinson, City Demographer, Department of Planning, City of Austin, February 2011.



**Census 2010 Data**  
**Census Blocks**

Percentage of the  
Total Population  
that is  
African American

Less than 20%
20% to 40%
40% to 60%
60% to 80%
80% Plus

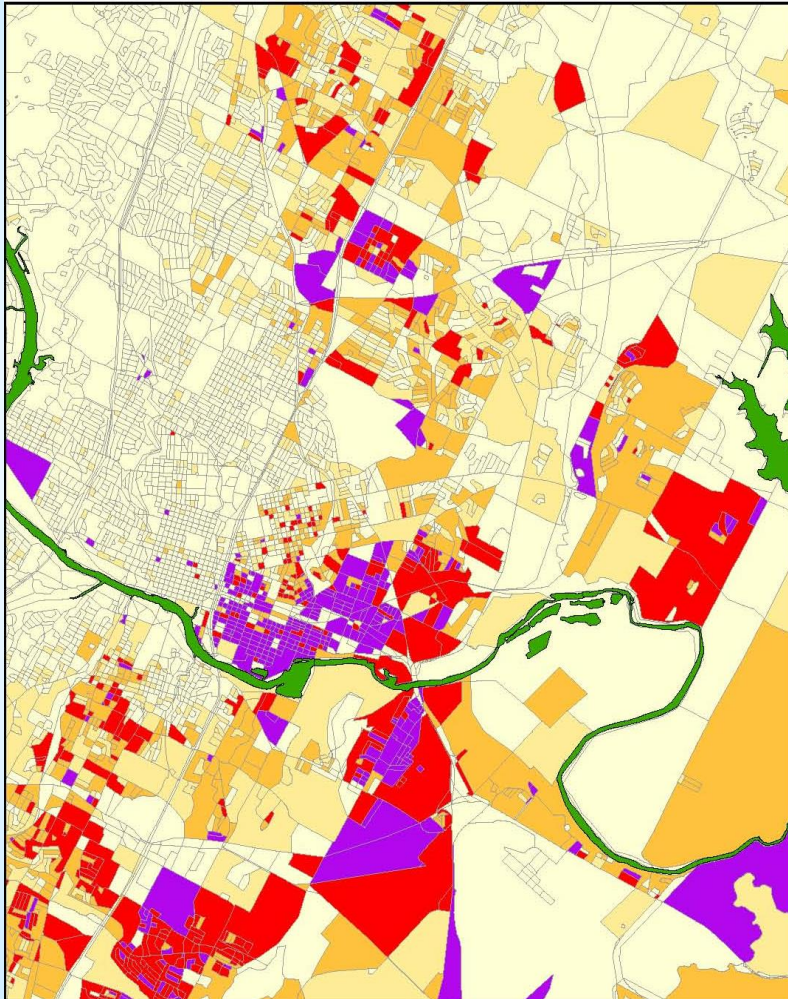




# Austin/Travis County Health and Human Services Department

## *Changing Hispanic Landscape in Austin*

### *Hispanic - - Latino Populations Concentrations, 2000 and 2010*

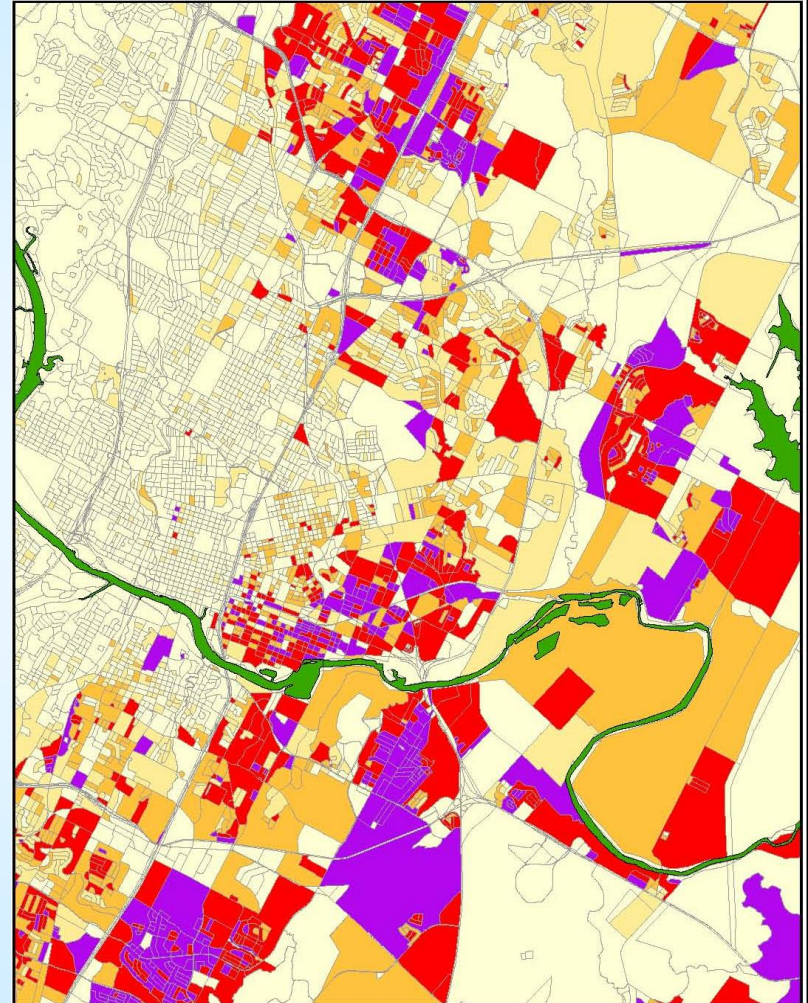


**Census 2000 Data**  
**Census Blocks**

Map produced by Ryan Robinson, City Demographer, Department of Planning, City of Austin. February 2011.

Percentage of the  
Total Population  
that is of  
Hispanic Origin

Less than 20%
20% to 40%
40% to 60%
60% to 80%
80% Plus



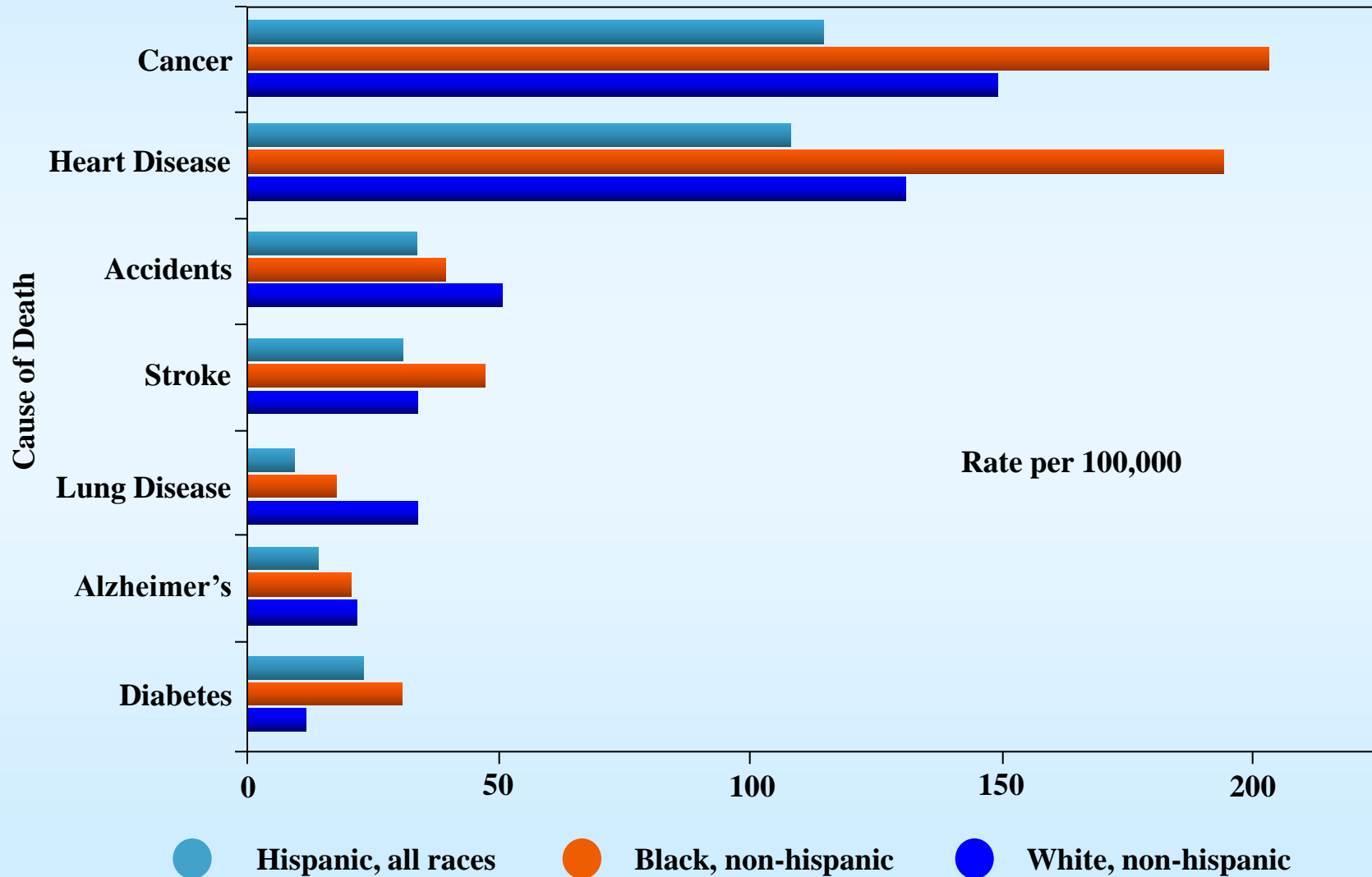
**Census 2010 Data**  
**Census Blocks**

Percentage of the  
Total Population  
that is of  
Hispanic Origin

Less than 20%
20% to 40%
40% to 60%
60% to 80%
80% Plus

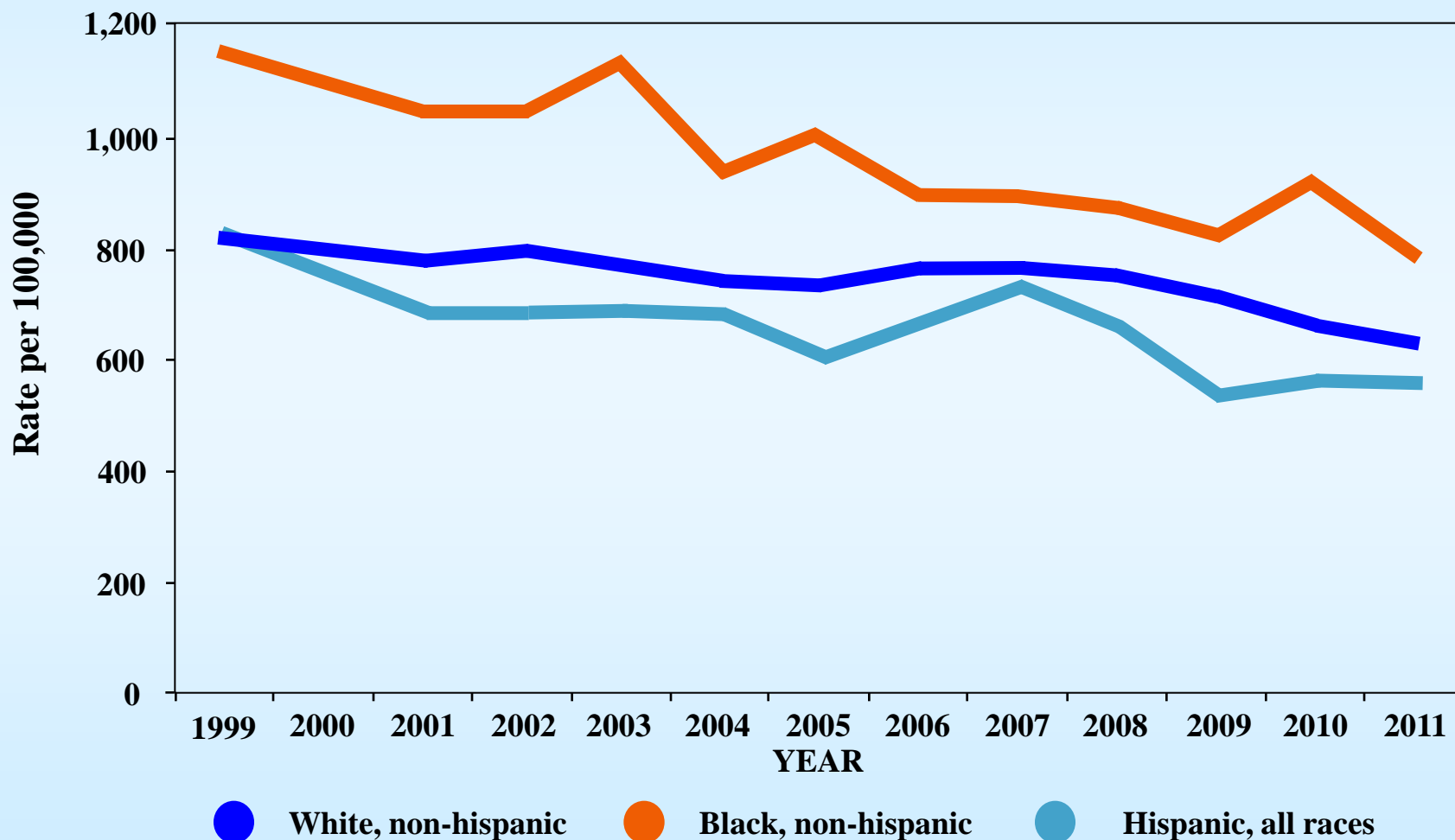


# *Age-adjusted Mortality Rates for Seven Leading Causes of Death by Race/Ethnicity, Travis County, 2009-2011*





# *Age-adjusted Mortality Rates by Race/Ethnicity, Travis County, 1999-2011*



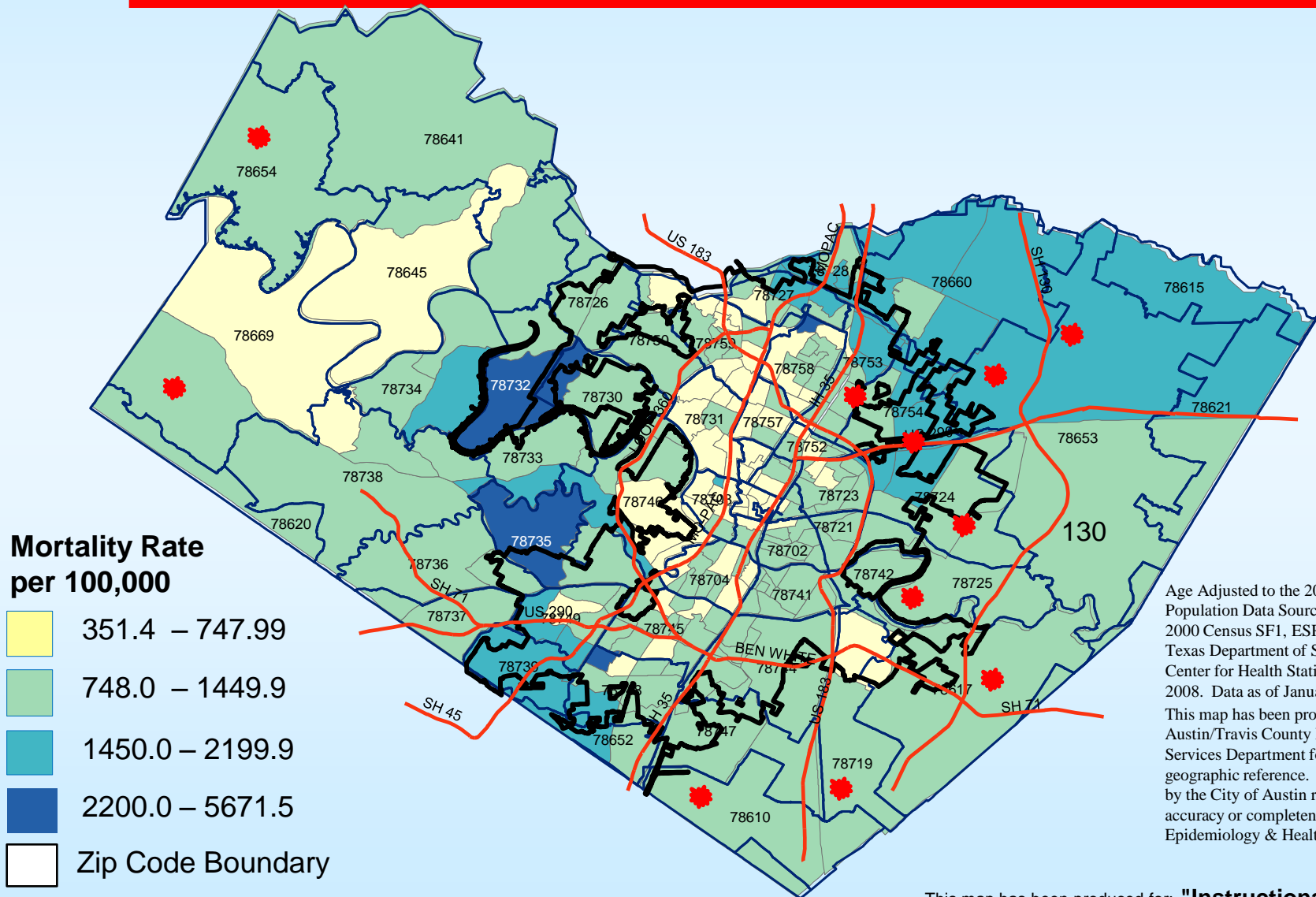




# Austin/Travis County Health and Human Services Department



## *Age Adjusted All Cause Mortality Rate by Year 2000 Census Tract Travis County 2004 - 2008*



Age Adjusted to the 2000 Standard  
Population Data Source: US Census Bureau  
2000 Census SF1, ESRI US Zip Codes, and  
Texas Department of State Health Services  
Center for Health Statistics Death Data 2004 –  
2008. Data as of January 17, 2013  
This map has been produced by the  
Austin/Travis County Health and Human  
Services Department for the sole purpose of  
geographic reference. No warranty is made  
by the City of Austin regarding specific  
accuracy or completeness. – A/TC HHSD  
Epidemiology & Health Statistics Unit

All Cause Mortality Rate for Travis County 2004-2008 is 747.4 per 100,000

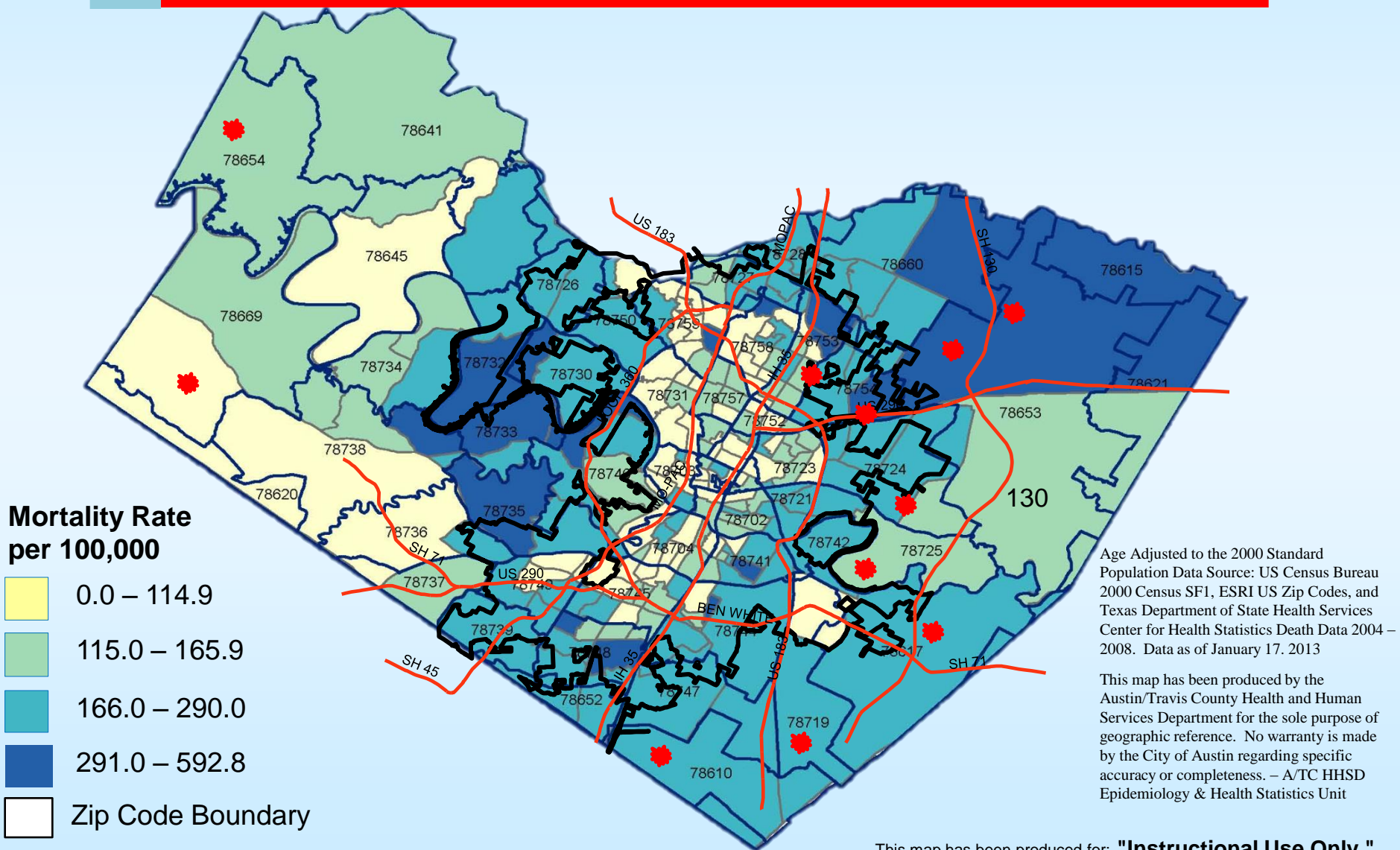
This map has been produced for: **"Instructional Use Only."**  
No warranty is made regarding its accuracy, completeness, or relevance.



# Austin/Travis County Health and Human Services Department



## Age Adjusted Cancer Mortality Rate by Year 2000 Census Tract Travis County 2004 - 2008



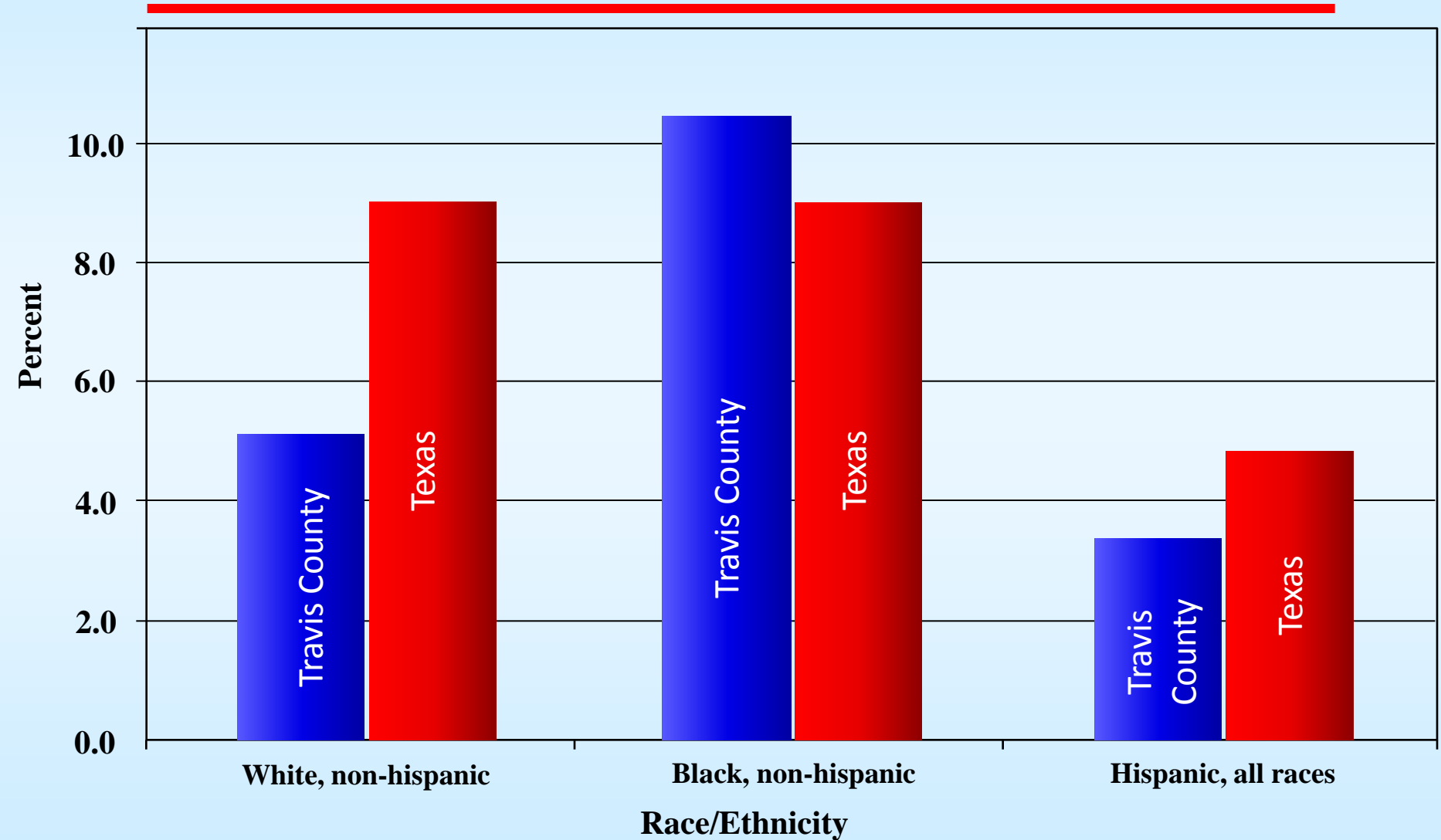
Cancer Mortality Rate for Travis County 2004-2008 is 165.5 per 100,000

This map has been produced for: **"Instructional Use Only."**  
No warranty is made regarding its accuracy, completeness, or relevance.





# *Cardiovascular Disease by Race/Ethnicity for Travis County & Texas, 2008-2012*

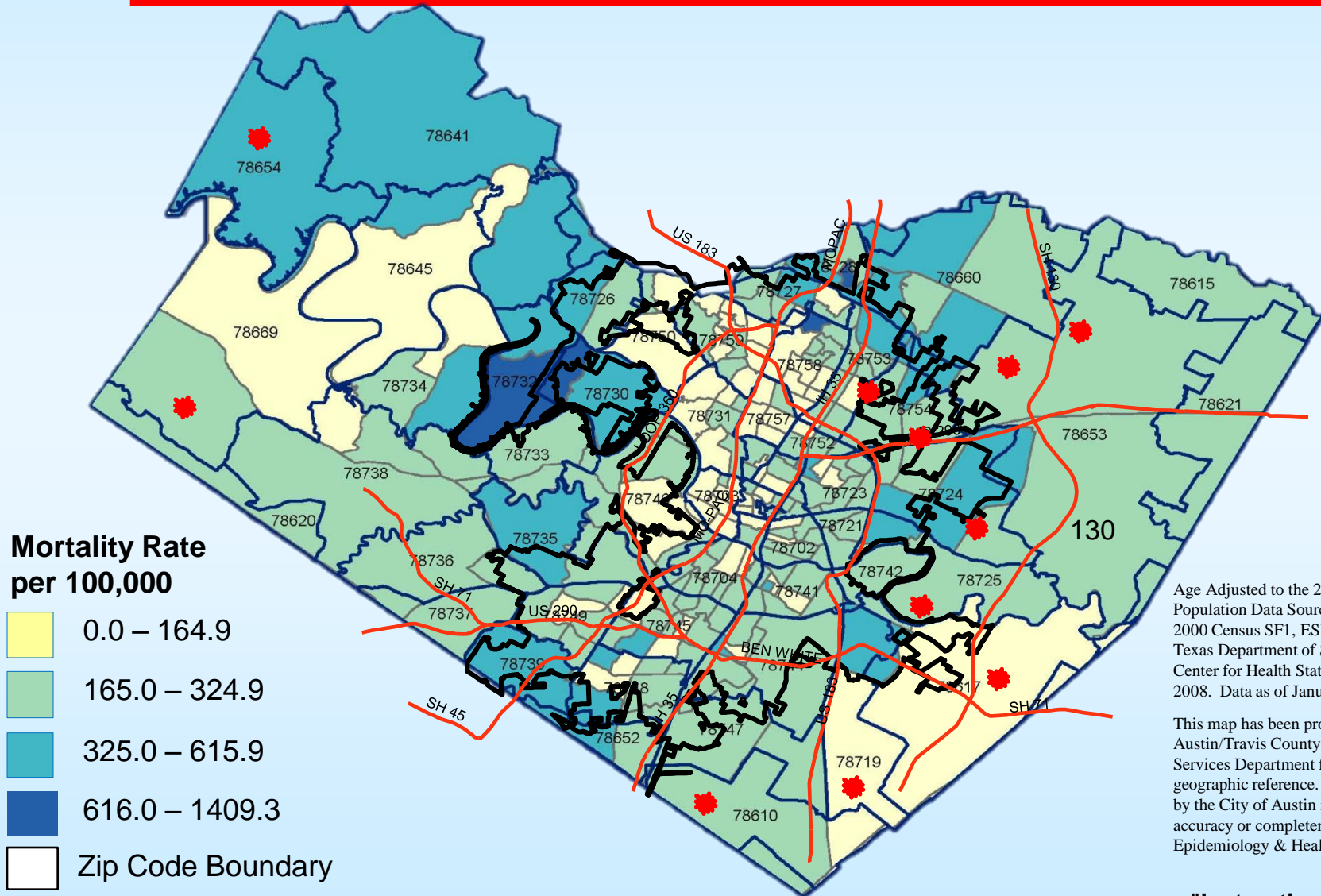




# Austin/Travis County Health and Human Services Department

## Age Adjusted Heart Disease Mortality Rate

### by Year 2000 Census Tract Travis County 2004 - 2008



Age Adjusted to the 2000 Standard Population Data Source: US Census Bureau 2000 Census SF1, ESRI US Zip Codes, and Texas Department of State Health Services Center for Health Statistics Death Data 2004 – 2008. Data as of January 17, 2013

This map has been produced by the Austin/Travis County Health and Human Services Department for the sole purpose of geographic reference. No warranty is made by the City of Austin regarding specific accuracy or completeness. – A/TC HHSD Epidemiology & Health Statistics Unit

This map has been produced for: **"Instructional Use Only."**

No warranty is made regarding its accuracy, completeness, or relevance.

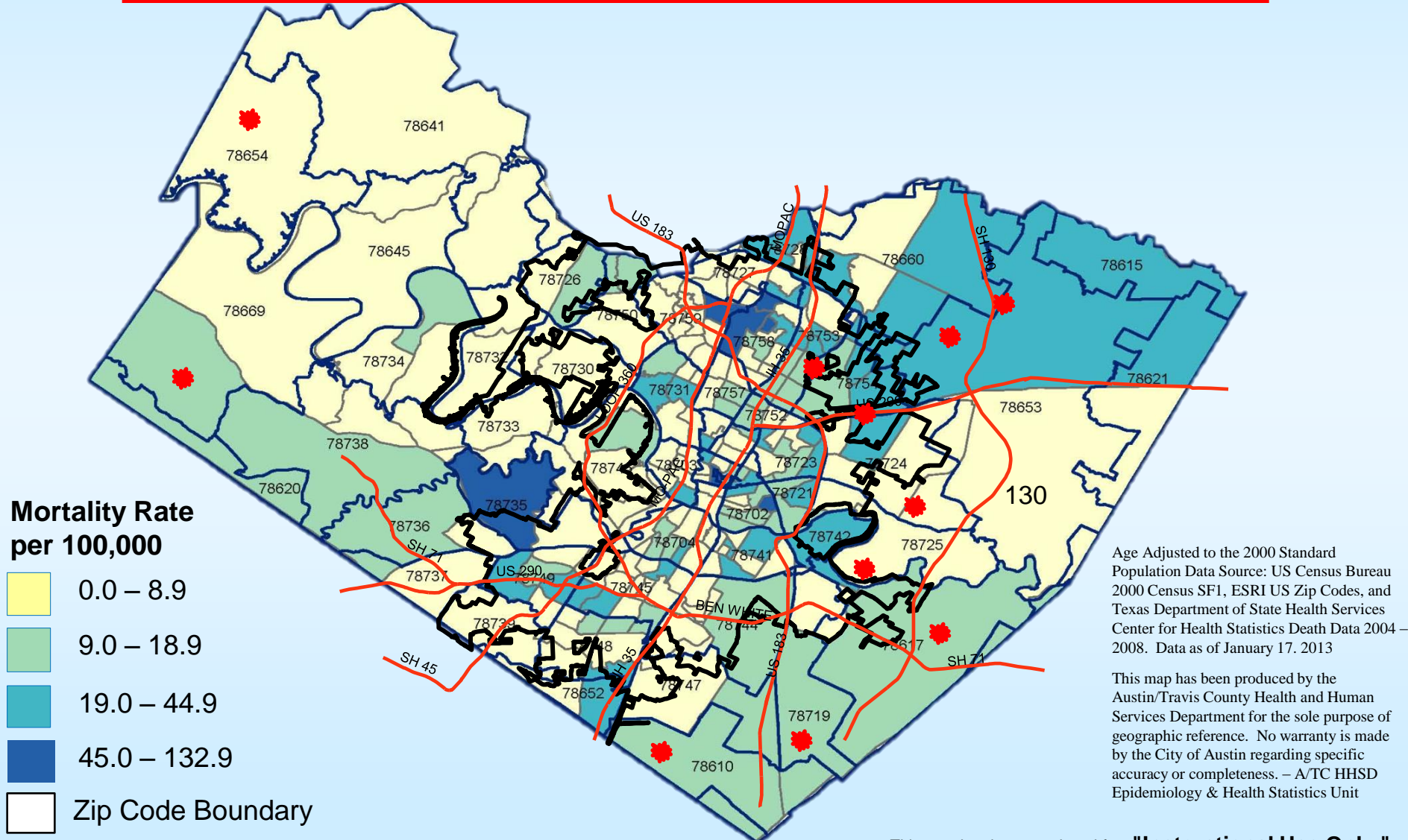
Heart Disease Mortality Rate for Travis County 2004-2008 is 164.4 per 100,000





# *Age Adjusted Hypertension and Hypertensive Renal Disease Mortality*

## *Rate by Year 2000 Census Tract Travis County 2004 - 2008*



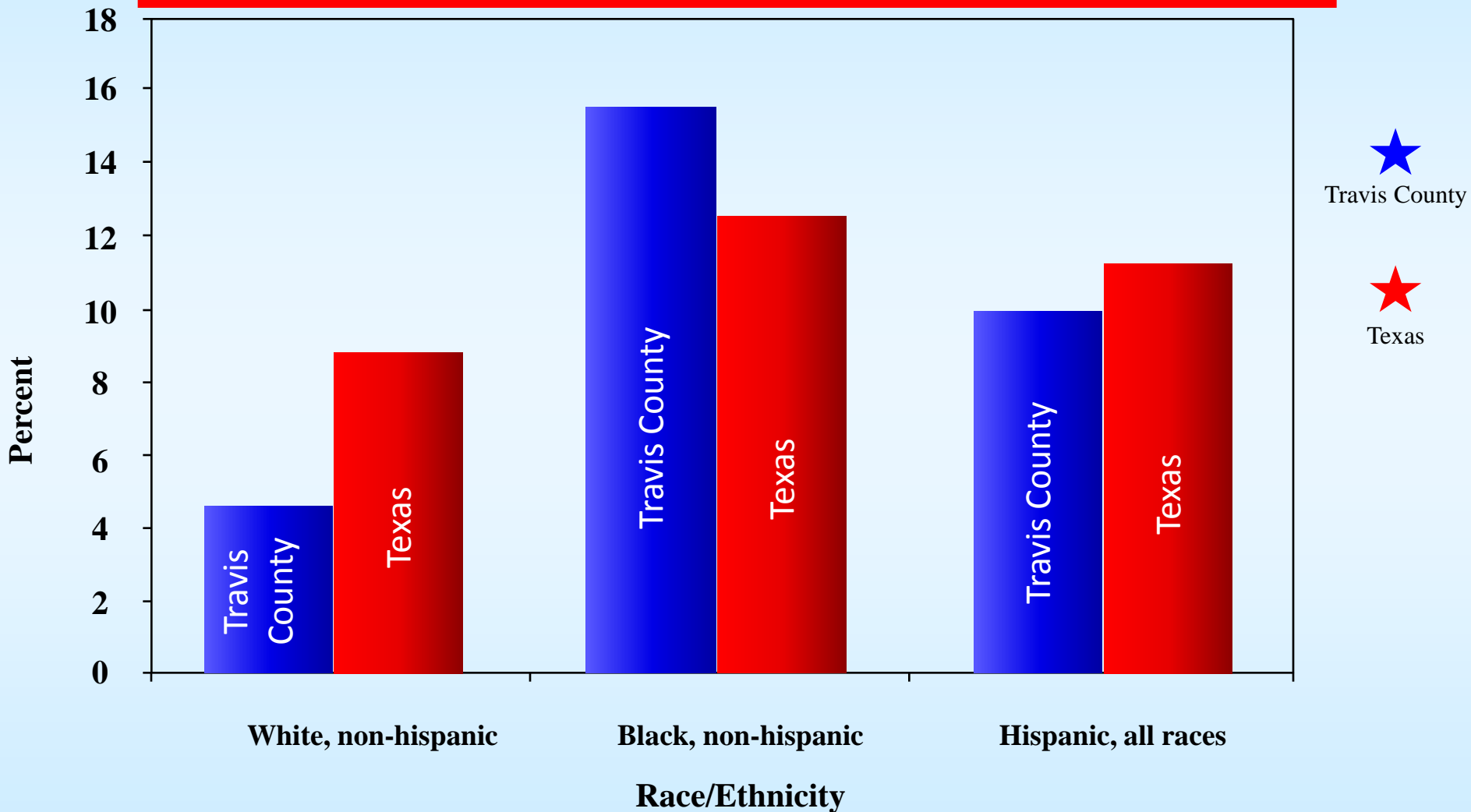
Hypertension and Hypertensive Renal Disease Mortality Rate for Travis County 2004-2008 is 9.2 per 100,000

This map has been produced for: **"Instructional Use Only."**  
No warranty is made regarding its accuracy, completeness, or relevance.



*Diabetes Prevalence by Race Ethnicity,*

*Travis County - Texas 2011-2012*



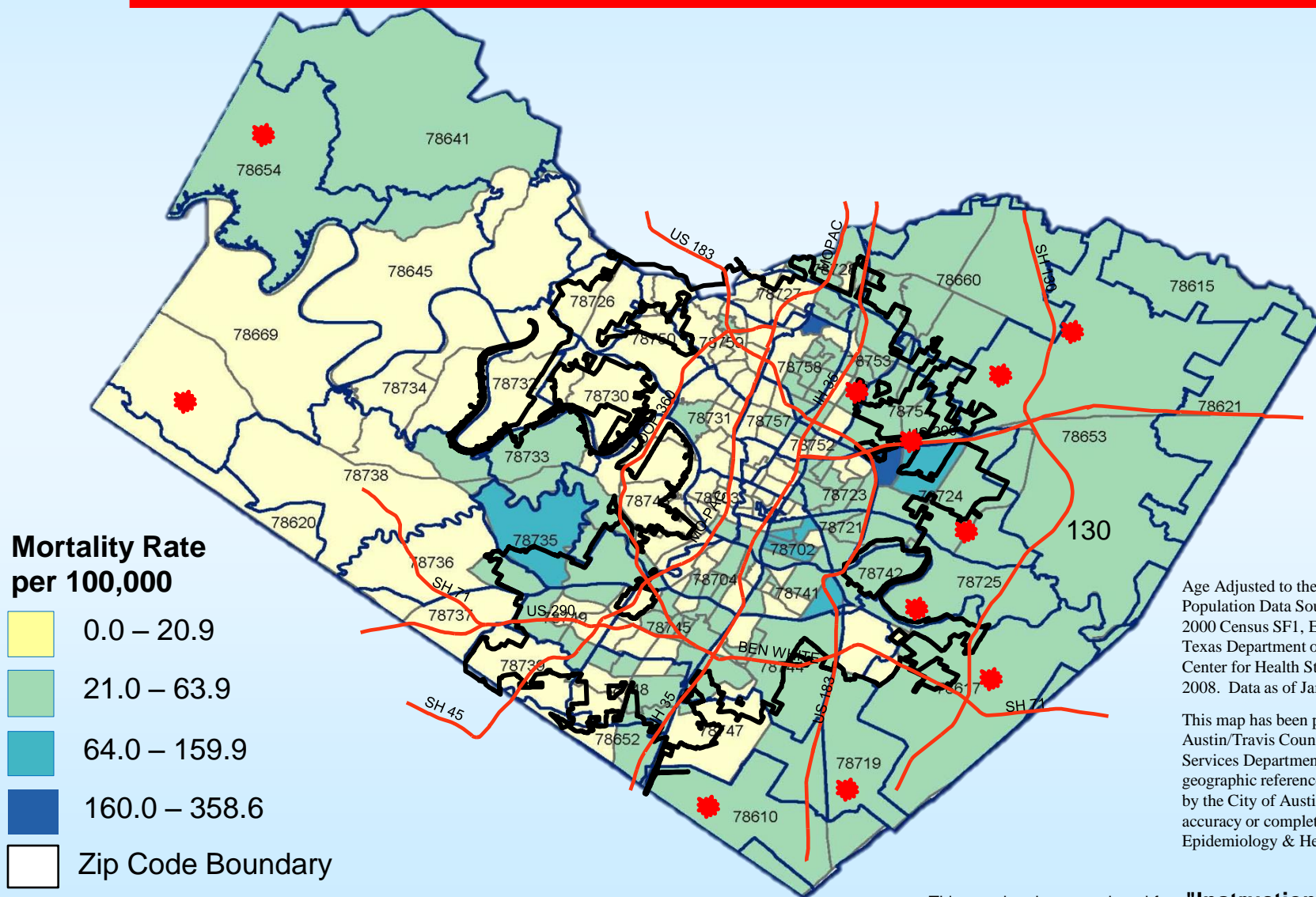




# Austin/Travis County Health and Human Services Department



## *Age Adjusted Diabetes Mortality Rate by Year 2000 Census Tract Travis County 2004 - 2008*



Age Adjusted to the 2000 Standard Population Data Source: US Census Bureau 2000 Census SF1, ESRI US Zip Codes, and Texas Department of State Health Services Center for Health Statistics Death Data 2004 – 2008. Data as of January 17, 2013

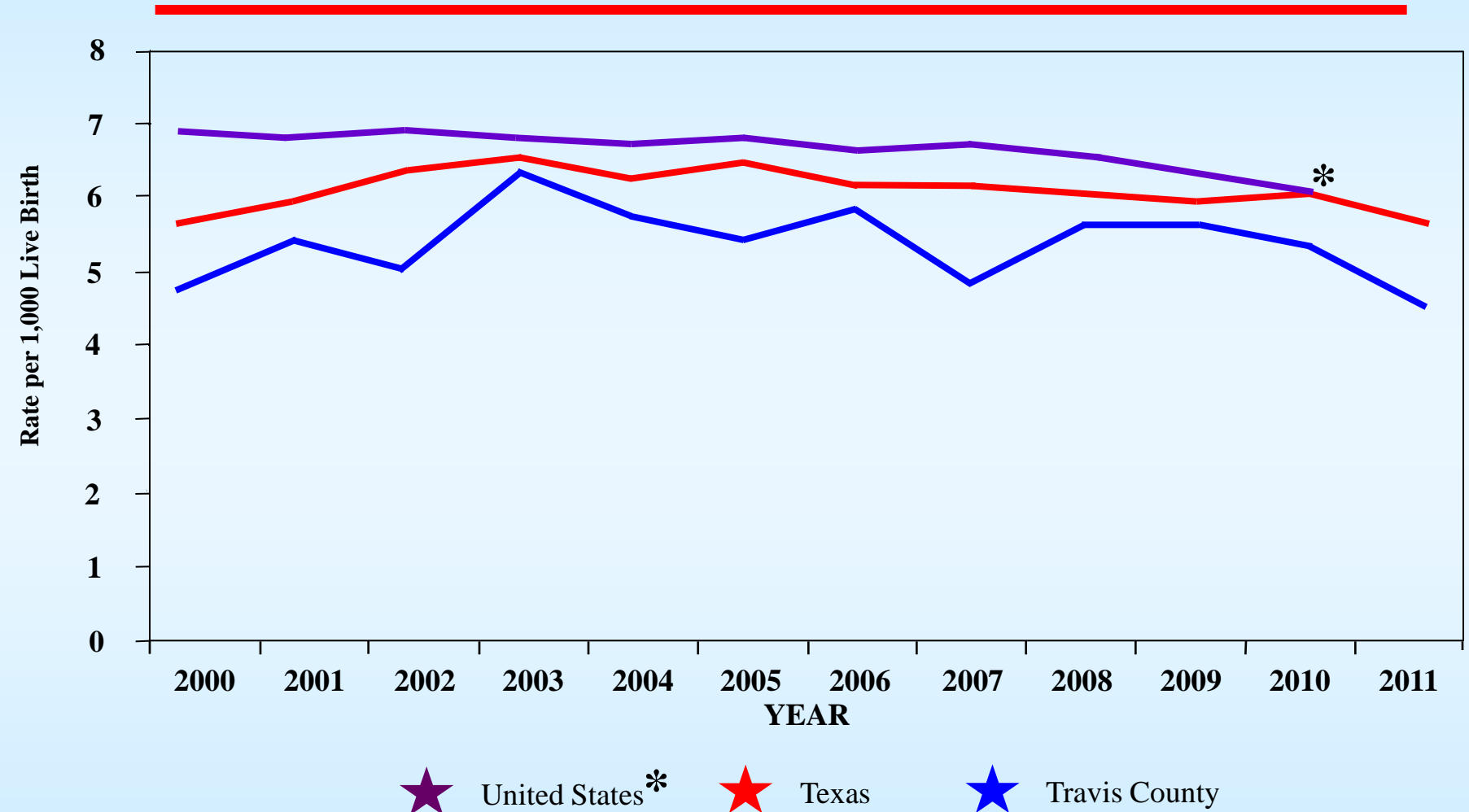
This map has been produced by the Austin/Travis County Health and Human Services Department for the sole purpose of geographic reference. No warranty is made by the City of Austin regarding specific accuracy or completeness. – A/TC HHSD Epidemiology & Health Statistics Unit

Diabetes Mortality Rate for Travis County 2004-2008 is 20.6 per 100,000

This map has been produced for: **"Instructional Use Only."**  
No warranty is made regarding its accuracy, completeness, or relevance.



# *Infant Mortality Rates for 2000 - 2011* *for Travis County, Texas and United States*



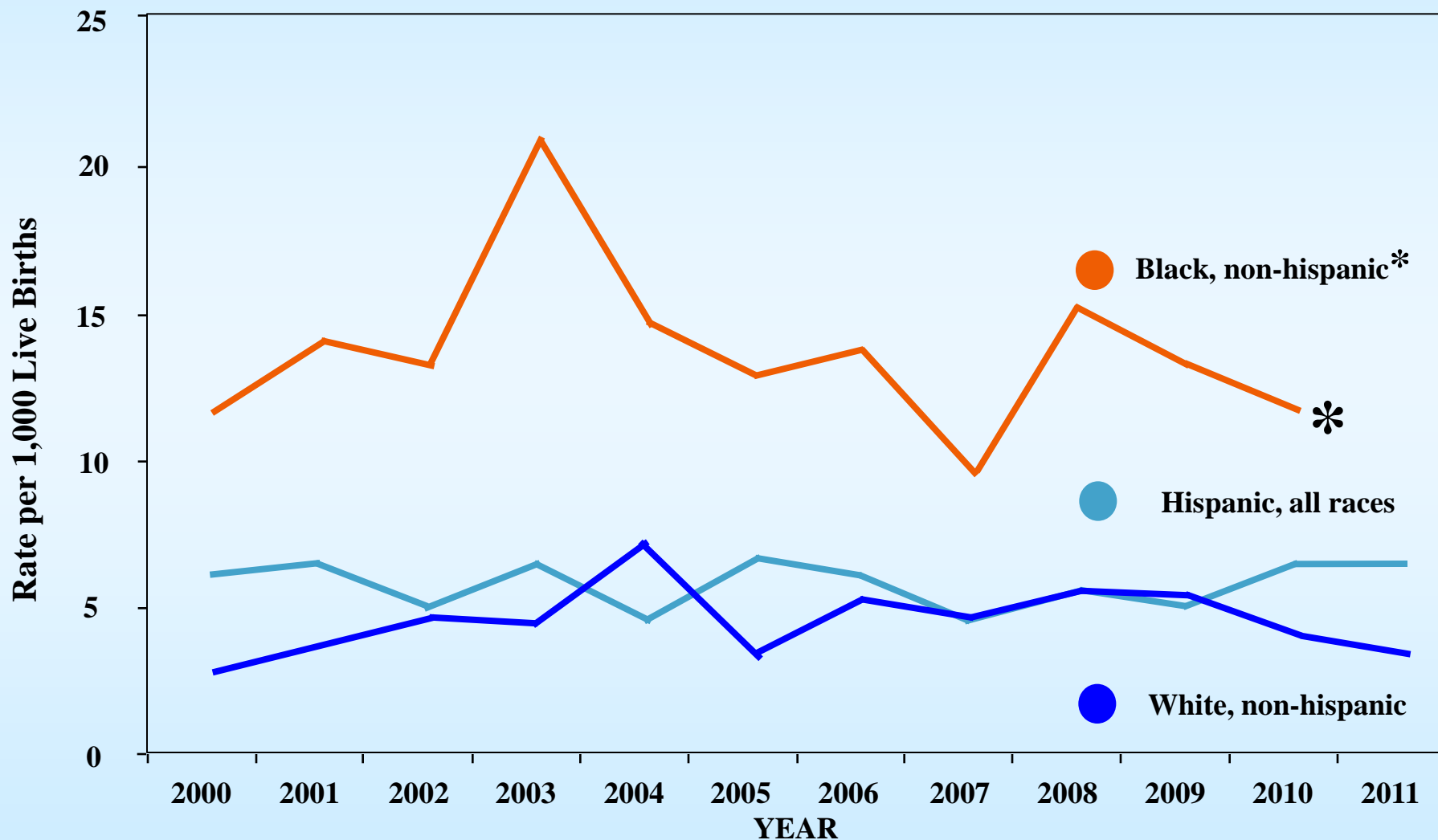
Data Source: Center for Health Statistics, Texas Department of State Health Services  
\* Infant mortality rates for 2011 have not been Publish at time if this report





# Austin/Travis County Health and Human Services Department

## *Infant Mortality Rates by Race / Ethnicity for for Travis County, 2000 - 2011*

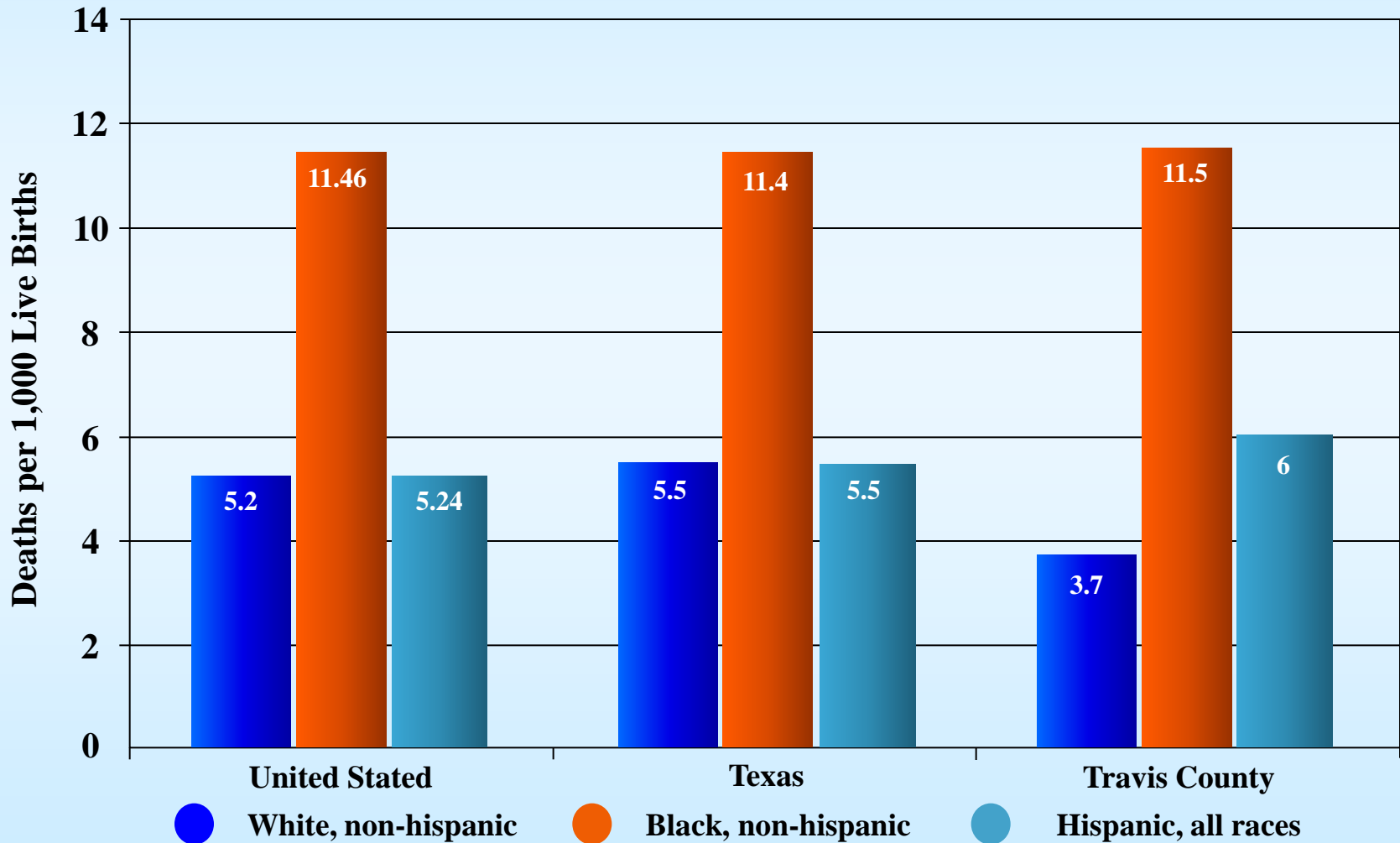


\* Due to low number of infant deaths, rates were not calculated for 2011

Data Source: Center for Health Statistics, Texas Department of State Health Services



# *Infant Mortality Rates by Race Ethnicity, for 2010 for Travis County, Texas and United States*



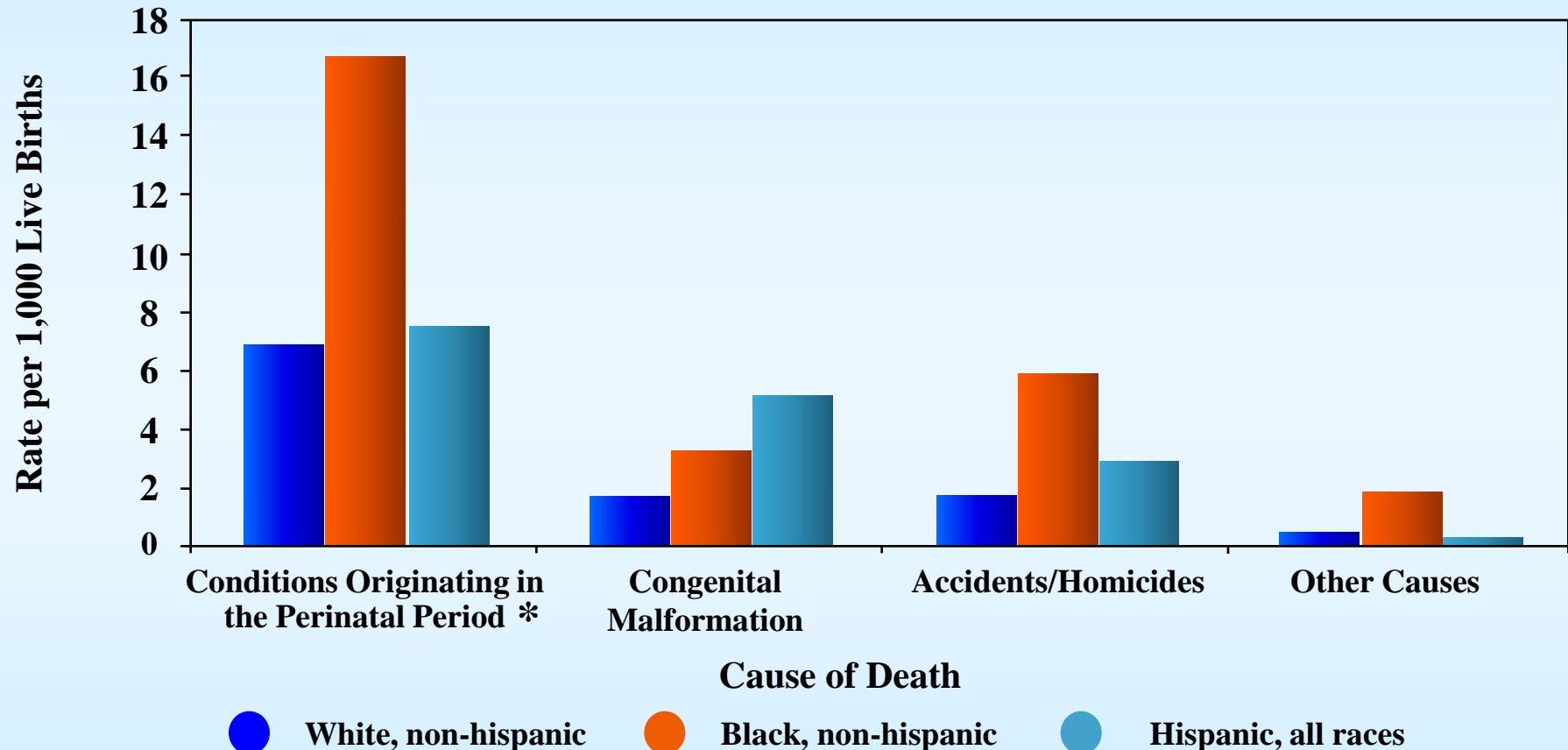




Austin/Travis County Health and Human Services Department

*Infant Mortality Rates for selected Causes of Death*  
*for Travis County, 2009 -2011*

---



\* Conditions originating in the perinatal period are complications of labor and/or delivery, short gestation, low birth weight and hypertension, diabetes, smoking and stress during pregnancy

Data Source: Center for Health Statistics, Texas Department of State Health Services



## Teen Births

Teen Births by Race/Ethnicity, Travis County, 2012

Race/Ethnicity	Mother's Age		
	14 & Under	15-17	18-19
White, Non-Hispanic	0	34	81
Black, Non-Hispanic	0	34	85
Hispanic	14	322	546
Other/ Multi-Racial	0	0	17
All Races	14	390	729

Current Rate: In Travis County, the 2012 birth rate for adolescent girls ages 15 – 19 was 33.2 per 1,000 above the national rate of 29.4. Travis County reported 1,133 births to girls 10-19 in 2012. 77% of all 15-19 year old teen births were to Hispanic adolescents. Hispanic females make up 44% of Travis County's female 15-19 adolescent population. The Hispanic 15-19 birth rate is 61.6 per 1,000 compared to the overall Travis County 15-19 birth rate of 33.2 per 1,000.

Source: Texas Department of State Health Services (2014). Austin, TX: Center for Health Statistics

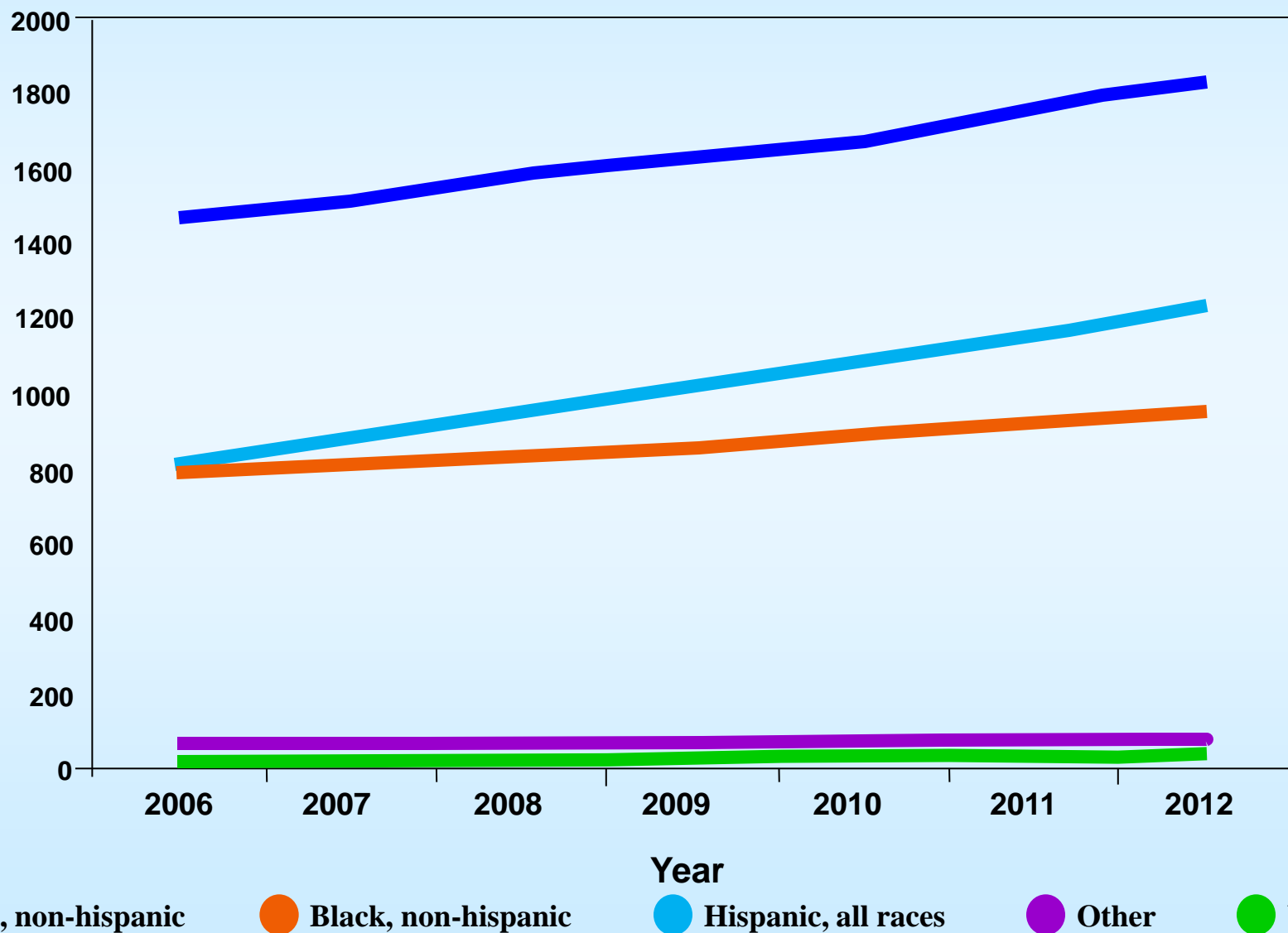




Austin/Travis County Health and Human Services Department

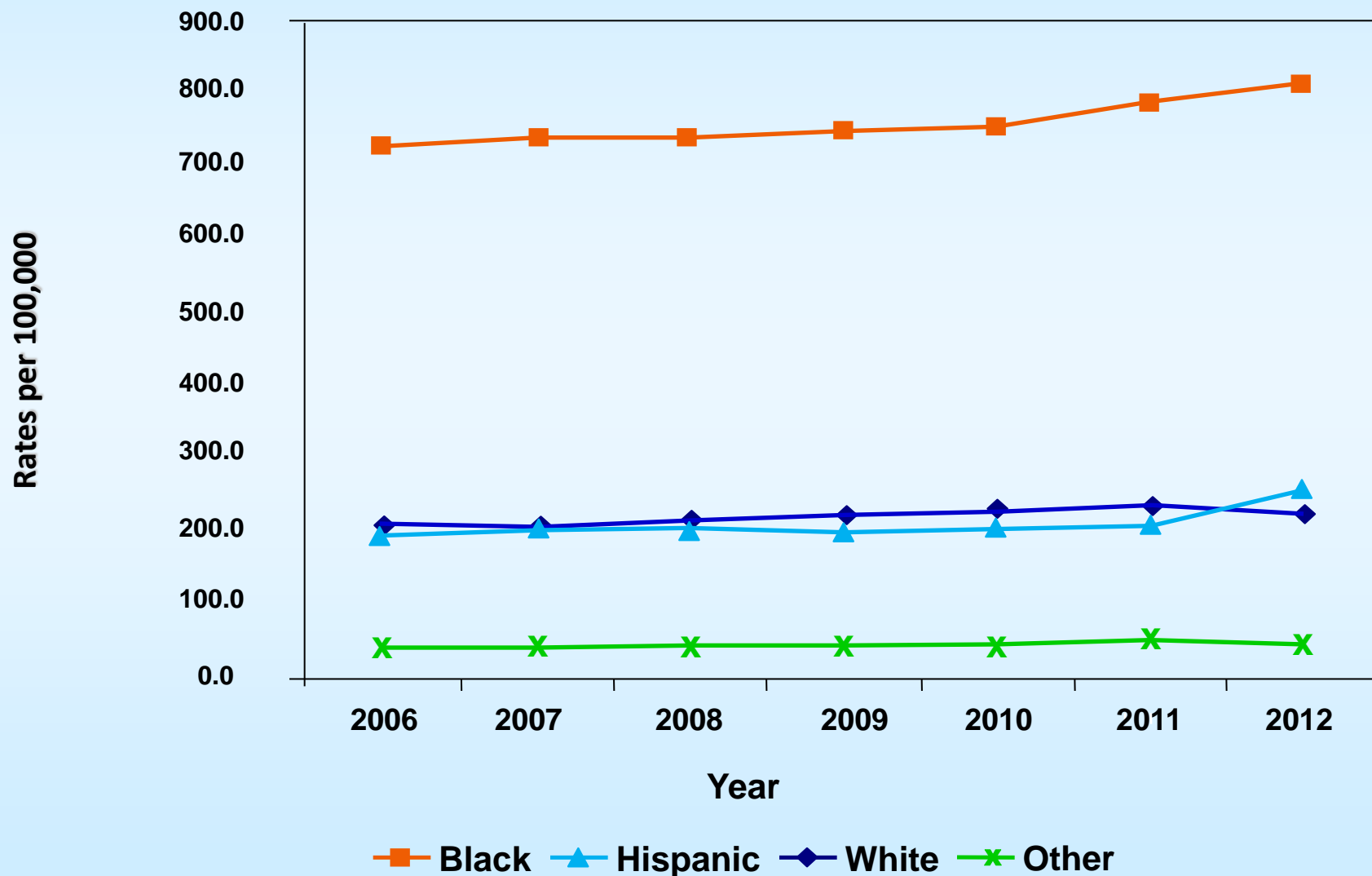
*Number of Persons Living with HIV by Race/Ethnicity,*

*Travis County, 2006 - 2012*





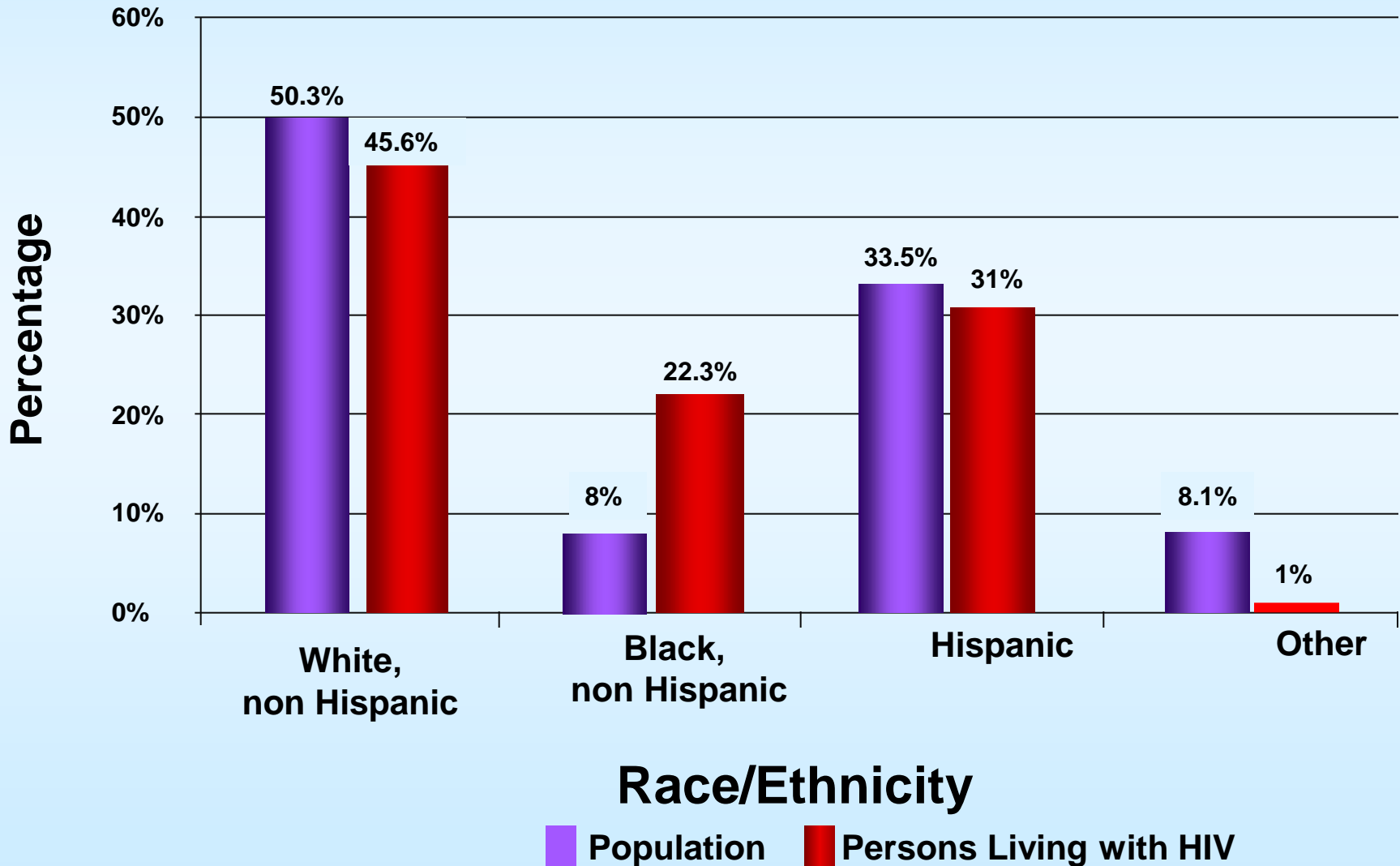
# Prevalence Rates for Persons Living with HIV/AIDS by Race/Ethnicity, Austin Transitional Grant Area, 2006 - 2012







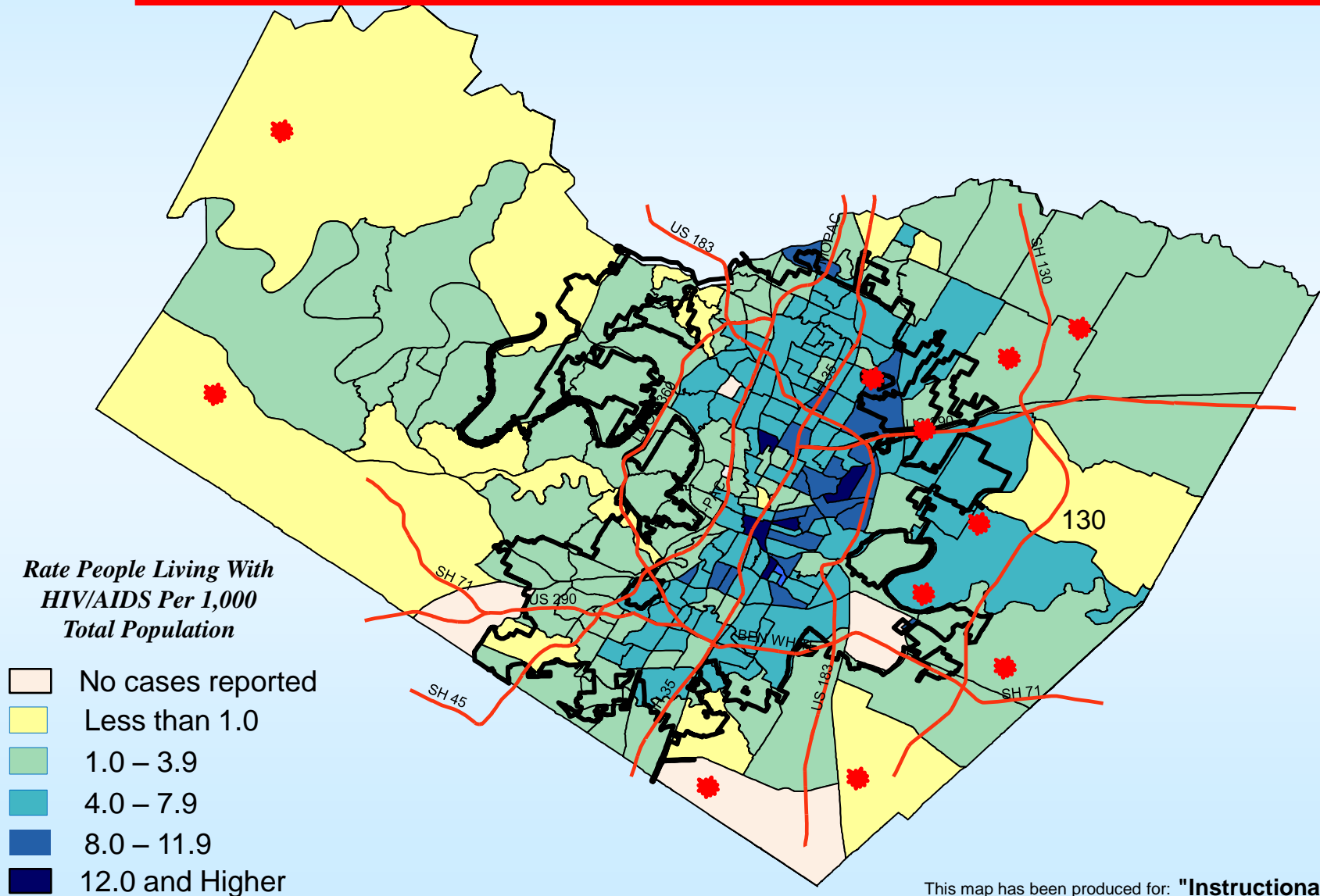
## *Comparison of Population and Persons Living with HIV, Travis County, 2013*





# Austin/Travis County Health and Human Services Department

## *People Living with HIV in 2013 by Census Tract in Travis County*



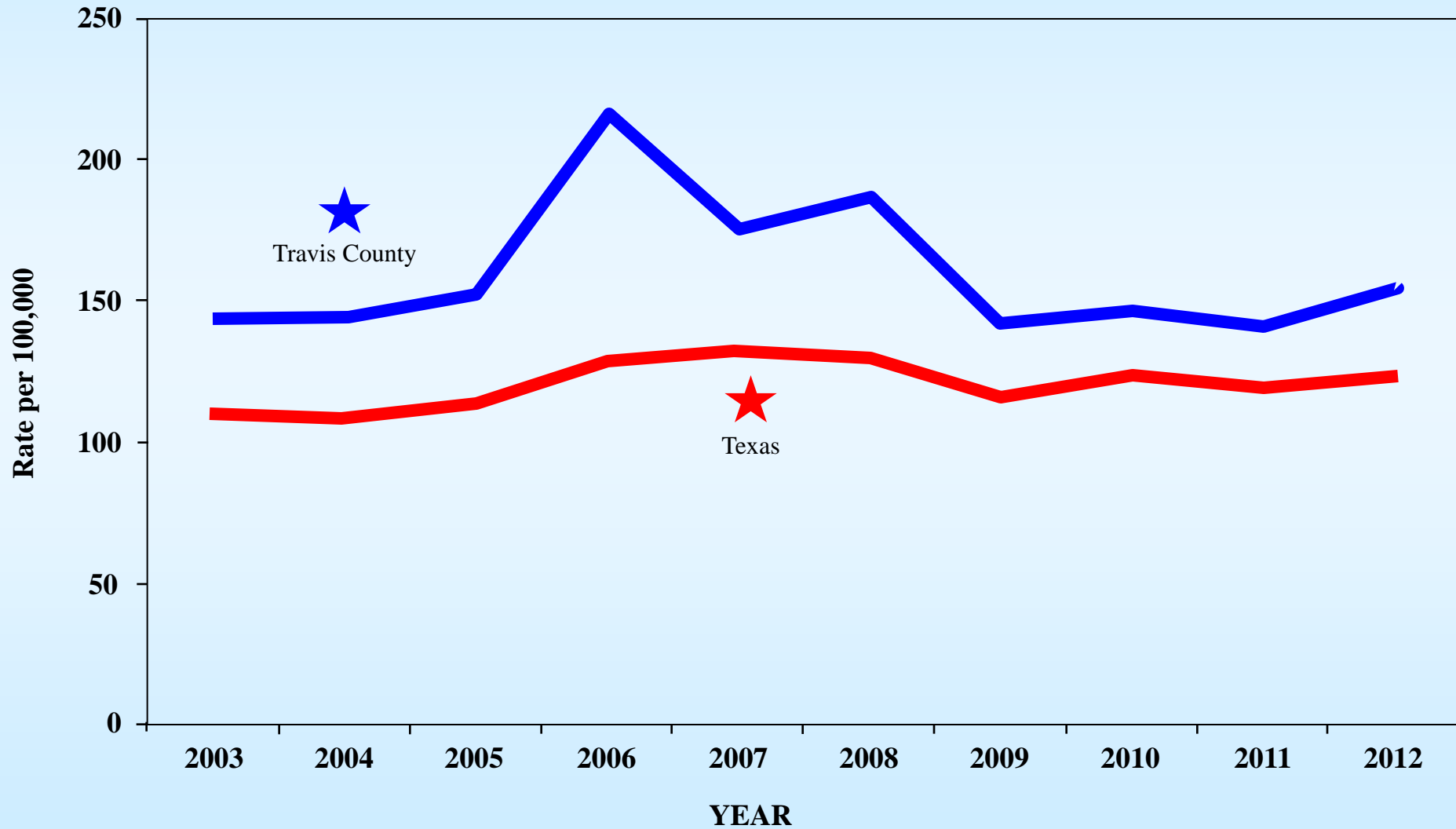
This map has been produced for: **"Instructional Use Only."**

No warranty is made regarding its accuracy, completeness, or relevance.



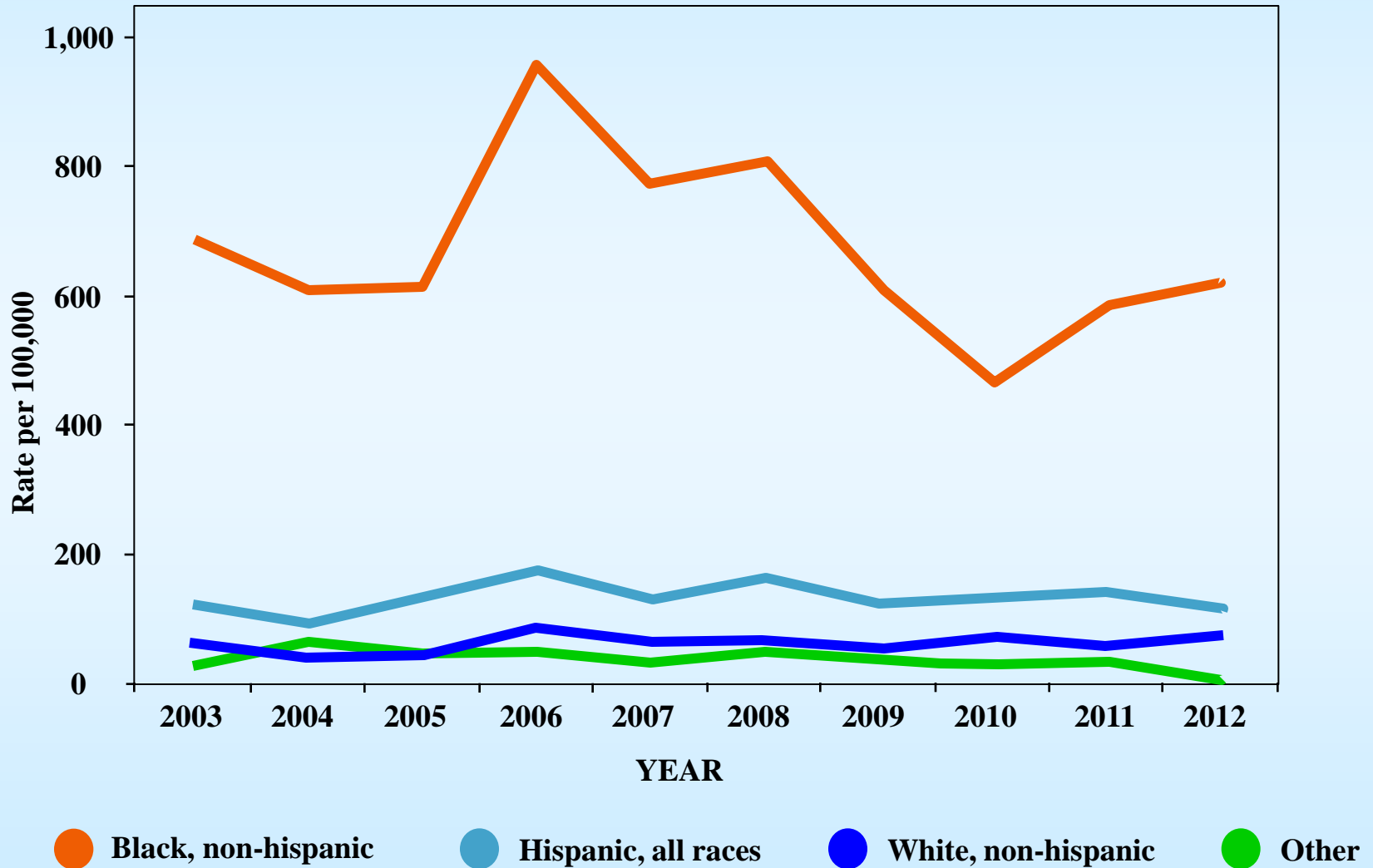


## *Travis County and Texas Gonorrhea Incidence Rates, 2003-2012*



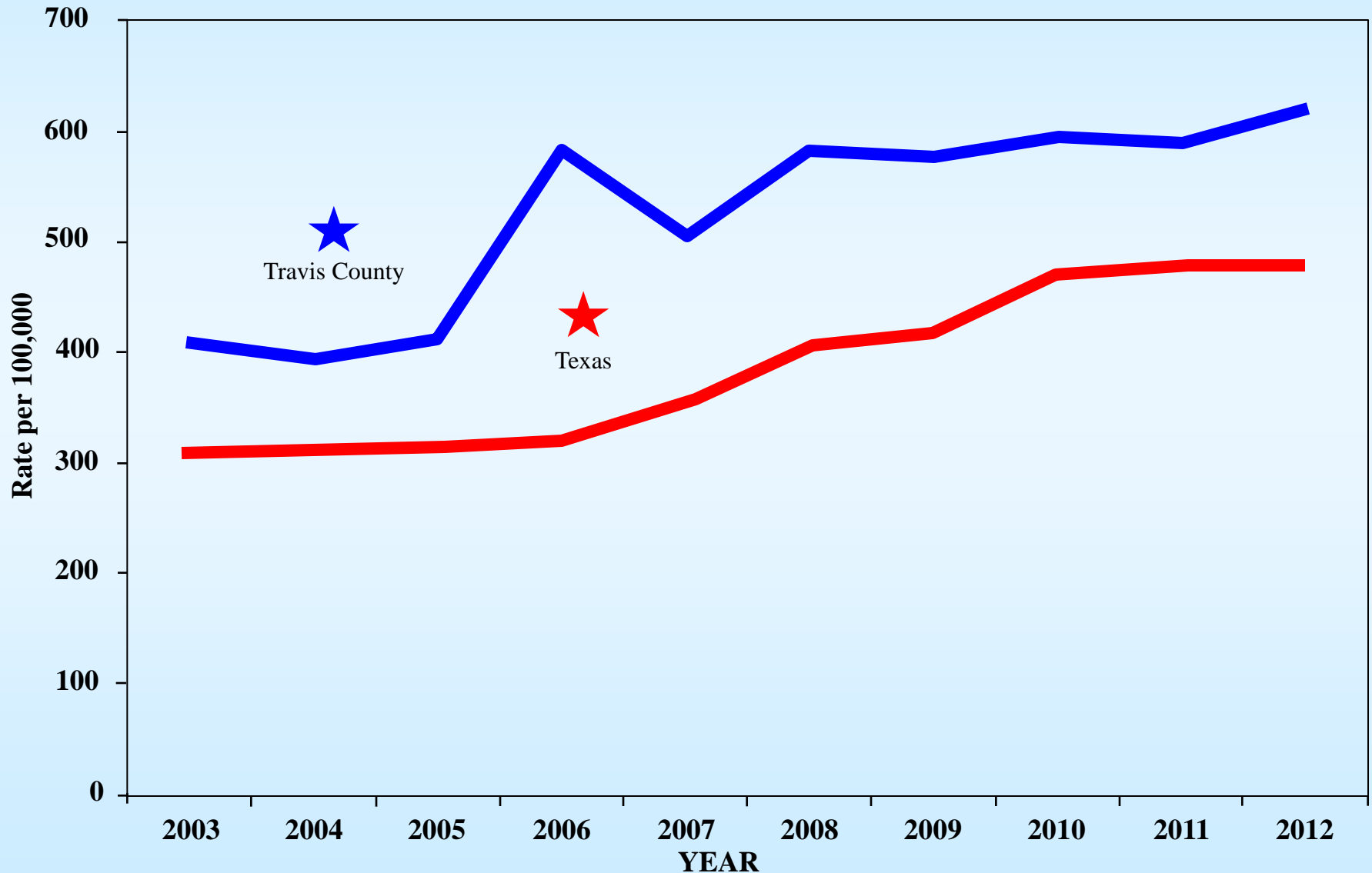


## *Gonorrhea Incidence Rates by Race/Ethnicity, Travis County, 2003-2012*





## Travis County and Texas Chlamydia Incidence Rates, 2003-2012

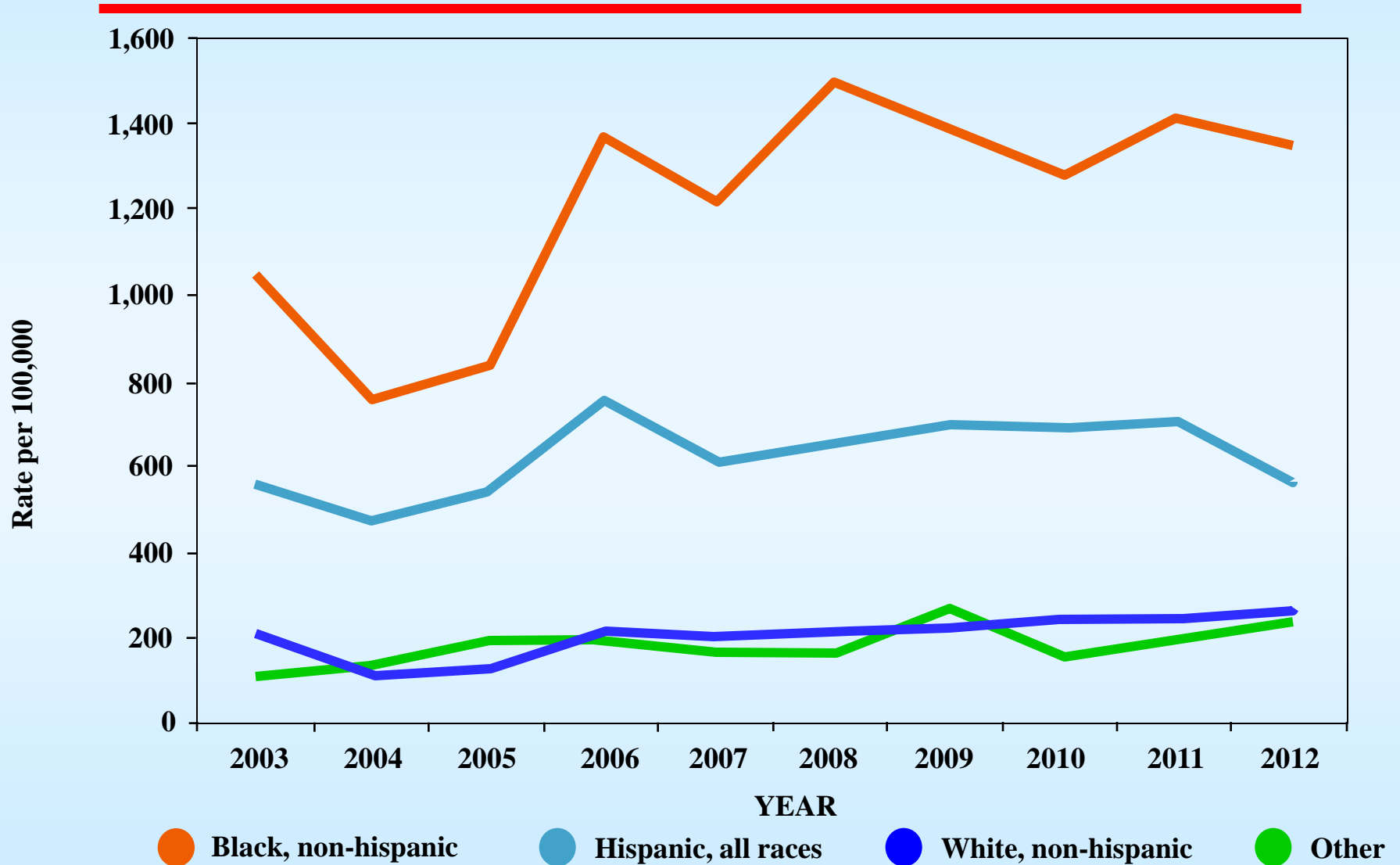


Data Source: TB/HIV/STD Epidemiology and Surveillance Branch, Texas Department of State Health Services





## *Chlamydia Incidence Rates by Race/Ethnicity, Travis County, 2003-2012*

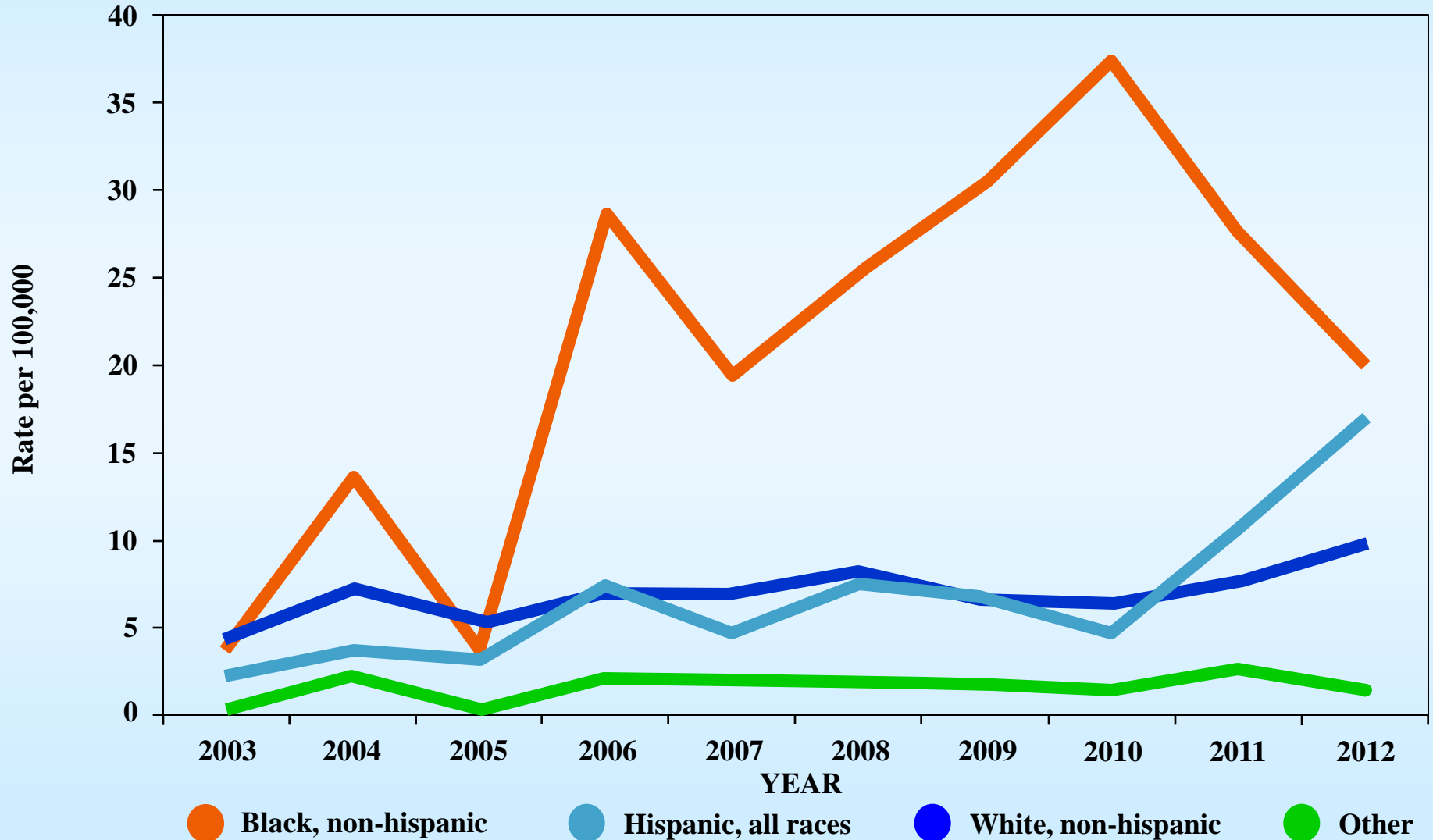




Austin/Travis County Health and Human Services Department

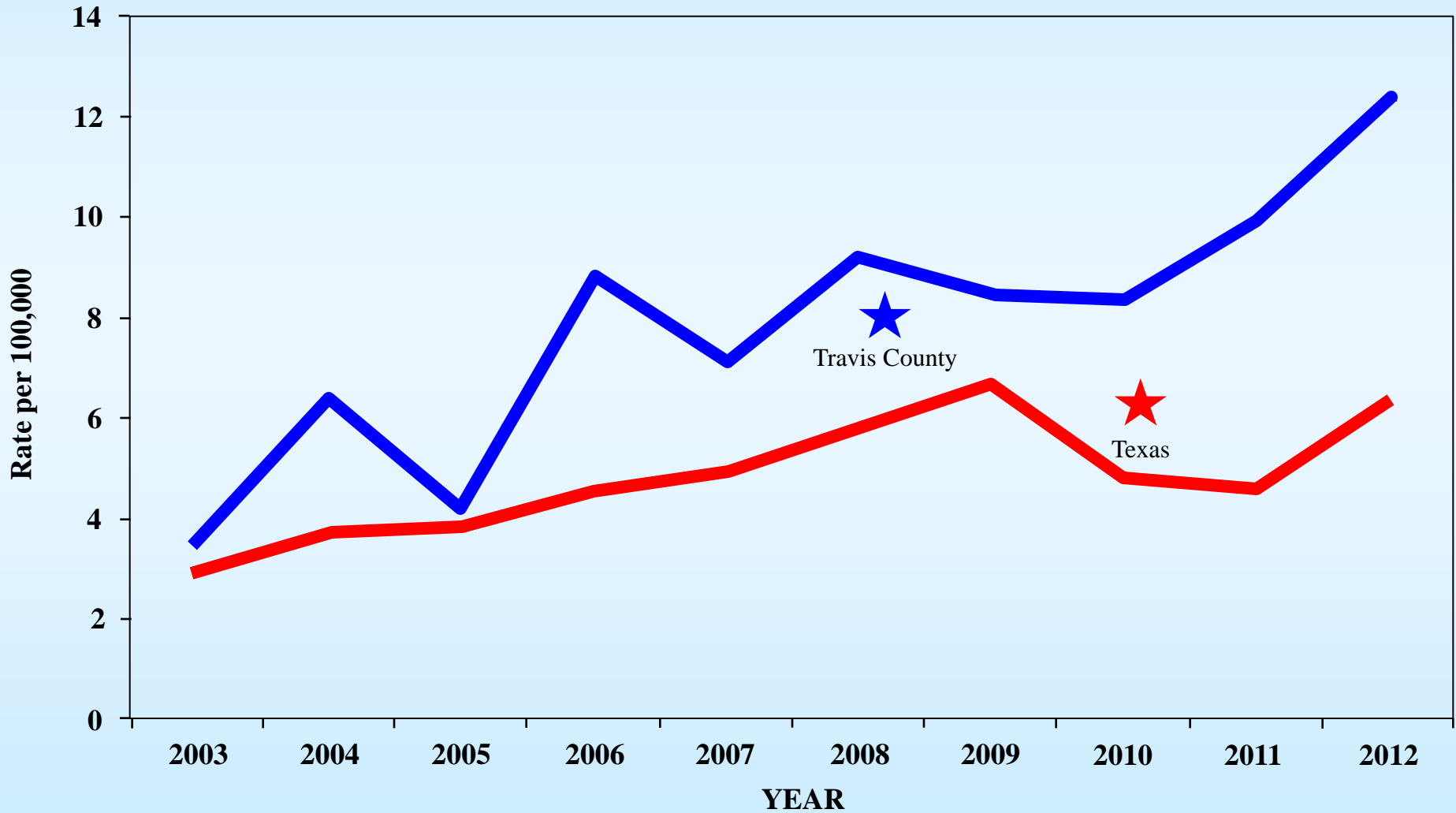


*Primary and Secondary Syphilis Incidence Rates by Race/Ethnicity,  
Travis County, 2003-2012*





# *Travis County and Texas Primary and Secondary Syphilis Incidence Rates, 2003-2012*





# *Public and Private Community Gardens*

*To date, community gardens have been primarily located in Central Austin neighborhoods. By expanding to underserved and suburban communities, more Austinites will have greater access to fresh produce, as well as green space that provides wildlife habitat.*





## Farmers Markets

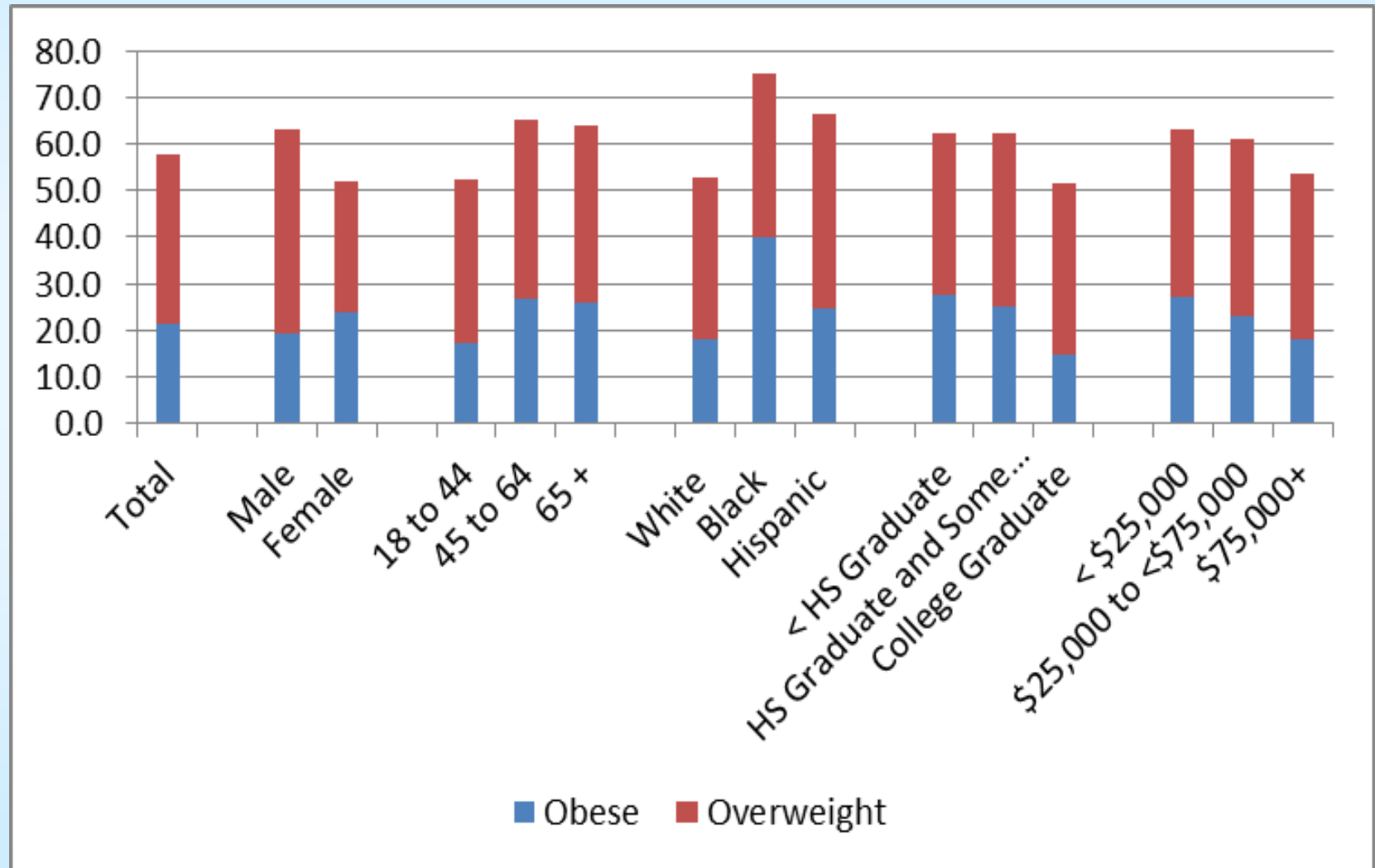
*Texas has the fewest farmers markets per capita in the country. Strategically increasing the number of markets and farmstands in neighborhoods with reduced access to fresh food would help address food insecurity, but logistical considerations such as hours and days of operation, location, and consumer demand need to be considered and addressed to make participation viable and profitable for farmers.*







## Overweight and Obesity, Travis County, 2011-2012



# HHSD Key Activities

## Addressing Ethnic and Racial Health Disparities

---

- **Maternal Infant Outreach Program (MIOP):** Community Health Worker program to reduce rates of preterm births, low birthweight babies, and infant mortality among African American women.
- **Healthy Families Travis County:** The “expanded” Healthy Families (HF) program serves African American families. HF is a home visiting program focusing on improving birth outcomes, maintaining safe, stable, and nurturing relationships.
- **WIC:** WIC is the special supplemental nutrition program for pregnant women, new mothers and young children. Participants learn about nutrition and receive benefits to purchase foods.
- **Healthy Texas Babies Initiative (HTBs):** This initiative brings key health and social service providers to develop and implement culturally relevant interventions and services focused on improving the health of African American women, Hispanic women, and teens of all races and ethnicities to improve preconception and inter-conception time period with the long-term goals of reducing preterm birth and infant mortality.
- **Healthy Mothers Healthy Babies/AAQL Initiative:** This Community Resource Fair is designed to increase the awareness about the high numbers of infant mortality (in the African American population). Primary goal is towards women “birthing healthy babies.”
- **Austin Healthy Adolescent (AHA) teen pregnancy prevention initiative:** The Peer-to-Peer (P2P) health education intervention works to enhance health literacy of Hispanic youth with the overall goal of decreasing the incidence of teen pregnancy among Latino females ages 13-19.
- **Youth Adult Council (YAC):** AHA formed the YAC to support the social, emotional, academic and leadership development of Travis County youth at elevated risk of HIV/STD’s through health intervention workshops and positive youth development programming. The YAC is composed of a diverse youth including African-American and Latino gay and bisexual men. The YAC is also composed of youth, parents, educational leaders, professionals working the field.
- **Funding to Latino HealthCare Forum** via Huston Tillotson.

# **HHSD Key Activities**

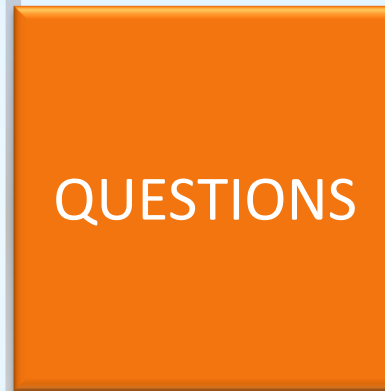
## **Addressing Ethnic and Racial Health Disparities**

---

**African American Quality of Life Unit: prevents disease and promote health through education and health screenings in underserved communities**

- Health Screenings and Testing
  - Blood pressure check
  - Blood sugar
  - Pregnancy
  - HIV
- Referral for follow up
- Educational workshops about chronic disease
- Community Engagement
  - Comprehensive approach involving partners
  - Community Based Organization outreach
  - Faith Based outreach
  - Job Fairs
  - Leverage Partner Resources





**August 3, 2015**

**Presented by Shannon Jones, III, Director  
Austin / Travis County Health and Human Services**