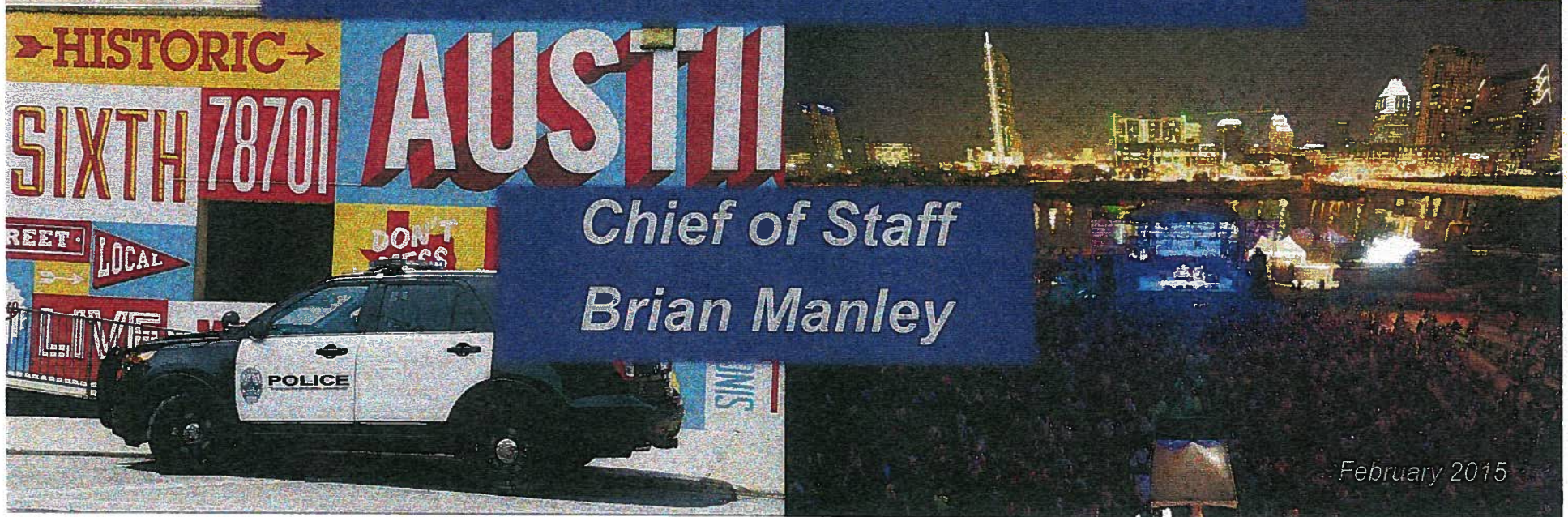


APD at a Glance

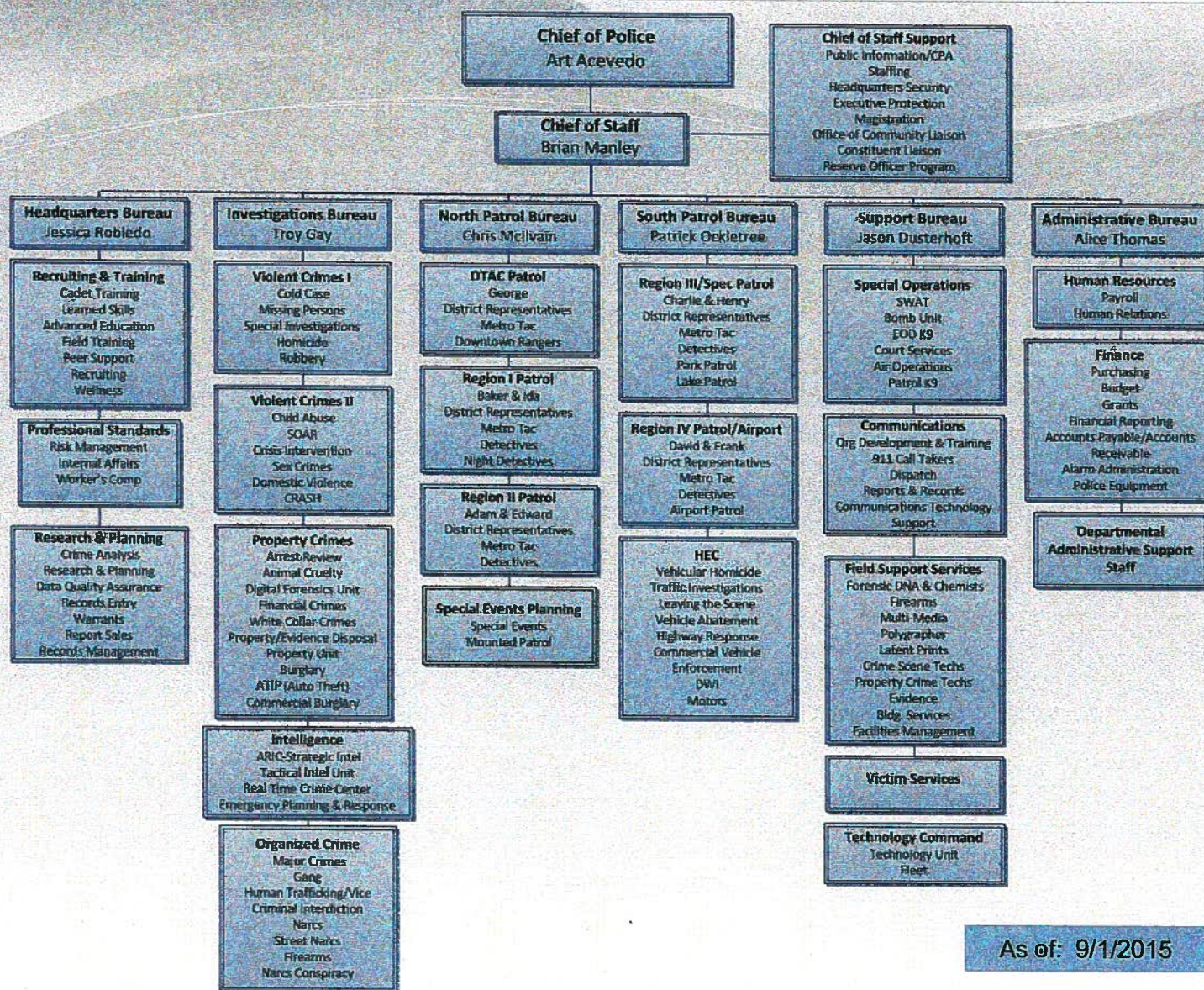


*Chief of Staff
Brian Manley*

February 2015



ORGANIZATIONAL STRUCTURE



As of: 9/1/2015



APD MISSION

To keep you, your family, and our community safe.

City of Austin

**11th Largest City in US
2015 Population* - 890,491**

**2015 Austin Round Rock MSA: 1,960,674
2015 Geographic Size: 322.48 Sq. Miles**

APD FY2014-2015 Goals

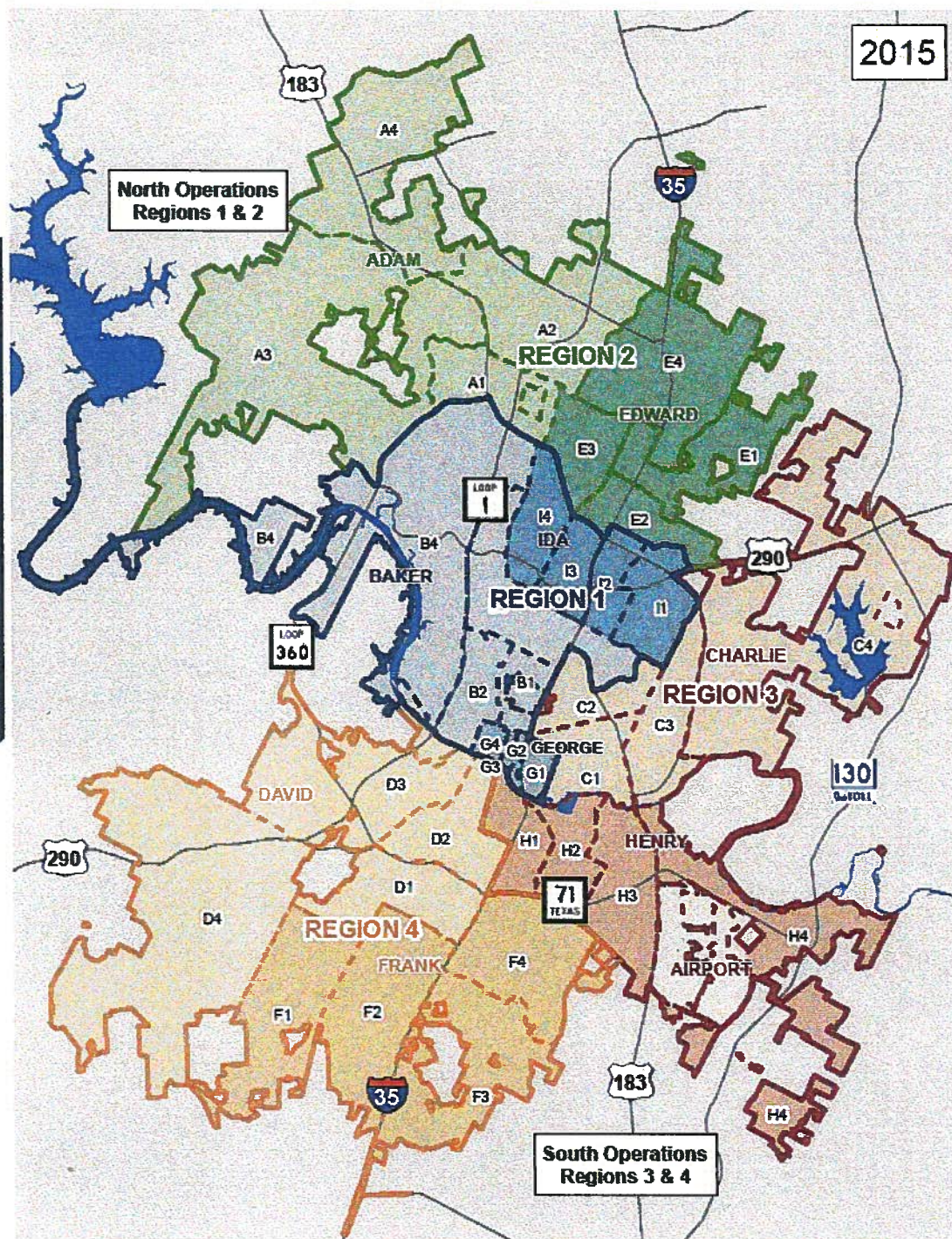
- **Reduce violent crime rate by 1%.**
- **Reduce property crime rate by 1%.**
- **Improve traffic safety**
- **Demonstrate Professionalism and Skills Competency Among Police Employees**
 - **Maintain the percentage of residents who are satisfied with the overall quality of police services**
- **Use Intelligence-Led Policing to increase efficiency in service delivery**
 - **Maintain a 7:30 response time to emergency and urgent calls**
 - **Increase the percentage of Part I Crimes cleared by 2%**
 - **Reduce the Part II crime rate by 1%**



Four Geographic Patrol Regions

Nine Total Sectors
(Plus Airport)

Region 1: Baker, Ida
Region 2: Adam, Edward
Region 3: Charlie, Henry
Region 4: David, Frank
DTAC: George





WHAT IS COMPSTAT?

COMPSTAT

- Uses “computer statistics” to manage resources and reduce crime
- APD launched in June 2008
- Uses crime analysis and mapping

Focus on...

Strategic - long-range system improvements

Operational - improvements to routine practices

Tactical - being prepared with an immediate response to ever-changing situations



RAPID RESPONSE TEAMS

Three components to fighting crime:

People – assisting victims

Places – improving safety through prevention

Activities – monitoring offender behaviors



APD ★★★★★ COMPSTAT Reports as of 8/31/2015 (Custom Data)

Executive View

COMPSTAT

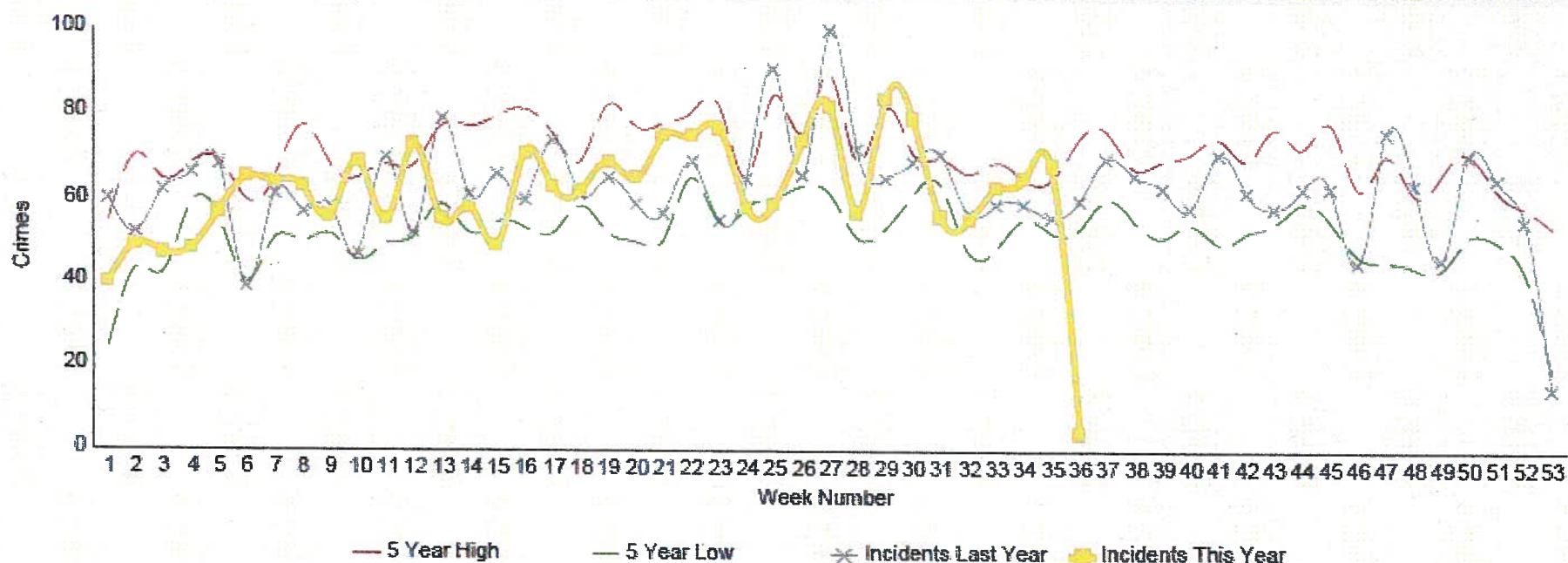
COMPSTAT Details

VIOLENT

PROPERTY

Offense Category	MTD	MTD LY	MTD % Var	YTD	YTD LY	YTD % Var
HOMICIDE	1	1	-	22	13	69%
RAPE	35	40	-13%	296	388	-24%
BANK ROBBERY	0	1	-100%	9	6	50%
BUSINESS ROBBERY	6	8	-25%	95	66	44%
INDIVIDUAL ROBBERY	88	68	29%	521	470	11%
AGG ASSAULT No FV	79	59	34%	546	573	-5%
AGG ASSAULT FV	65	91	-29%	720	712	1%
Total	274	268	2%	2,209	2,228	-1%

Citywide VIOLENT Crimes (All) ☒ 5 Year High ☒ 5 Year Low ☒ Incidents Last Year ☒ Incidents This Year

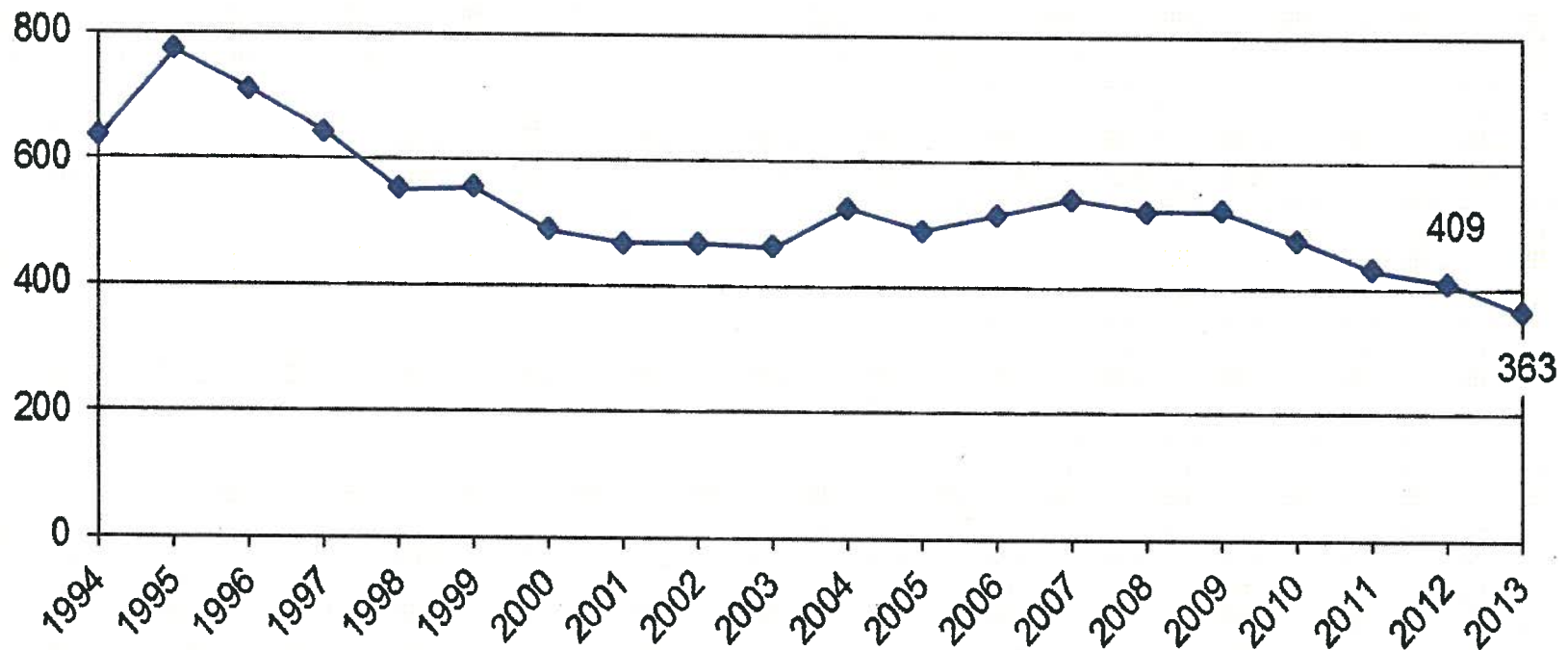




VIOLENT CRIME

Includes: Homicide, Rape, Robbery, & Aggravated Assault

Violent Crime Rate per 100,000





APD

☆☆☆☆☆

COMPSTAT Reports as of 8/31/2015 (Custom Date)

Executive View

COMPSTAT

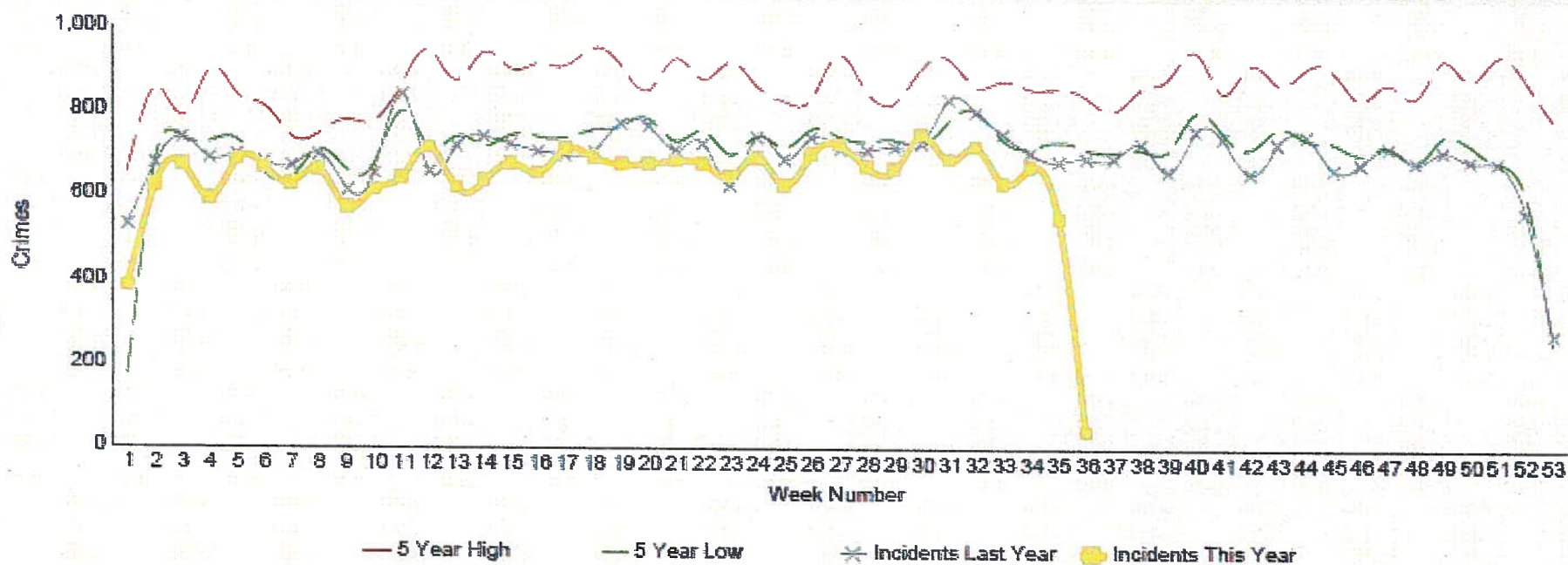
COMPSTAT Details

VIOLENT

PROPERTY

Offense Category	MTD	MTD LY	MTD % Var	YTD	YTD LY	YTD % Var
BURGLARY NON RESIDENCE	78	85	-8%	844	993	-15%
BURGLARY RESIDENCE	295	356	-17%	2,331	2,858	-18%
AUTO THEFT	181	172	-6%	1,429	1,436	-0%
BOV	857	951	-10%	6,827	7,012	-3%
OTHER THEFT	1,411	1,729	-18%	11,580	12,823	-8%
Total	2,802	3,293	-15%	23,011	24,922	-8%

Citywide PROPERTY Crime (All) ☒ 5 Year High ☒ 5 Year Low ☒ Incidents Last Year ☒ Incidents This Year

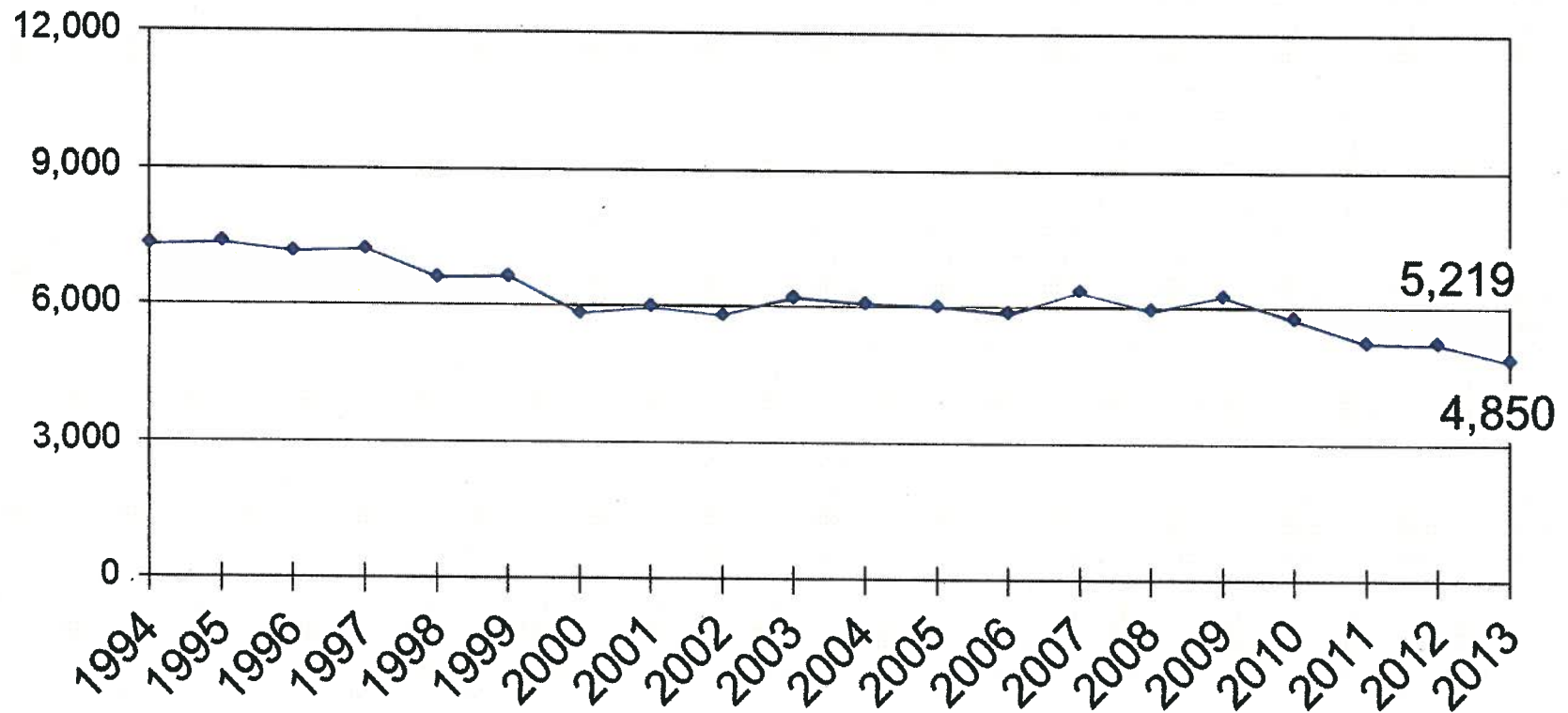




PROPERTY CRIME

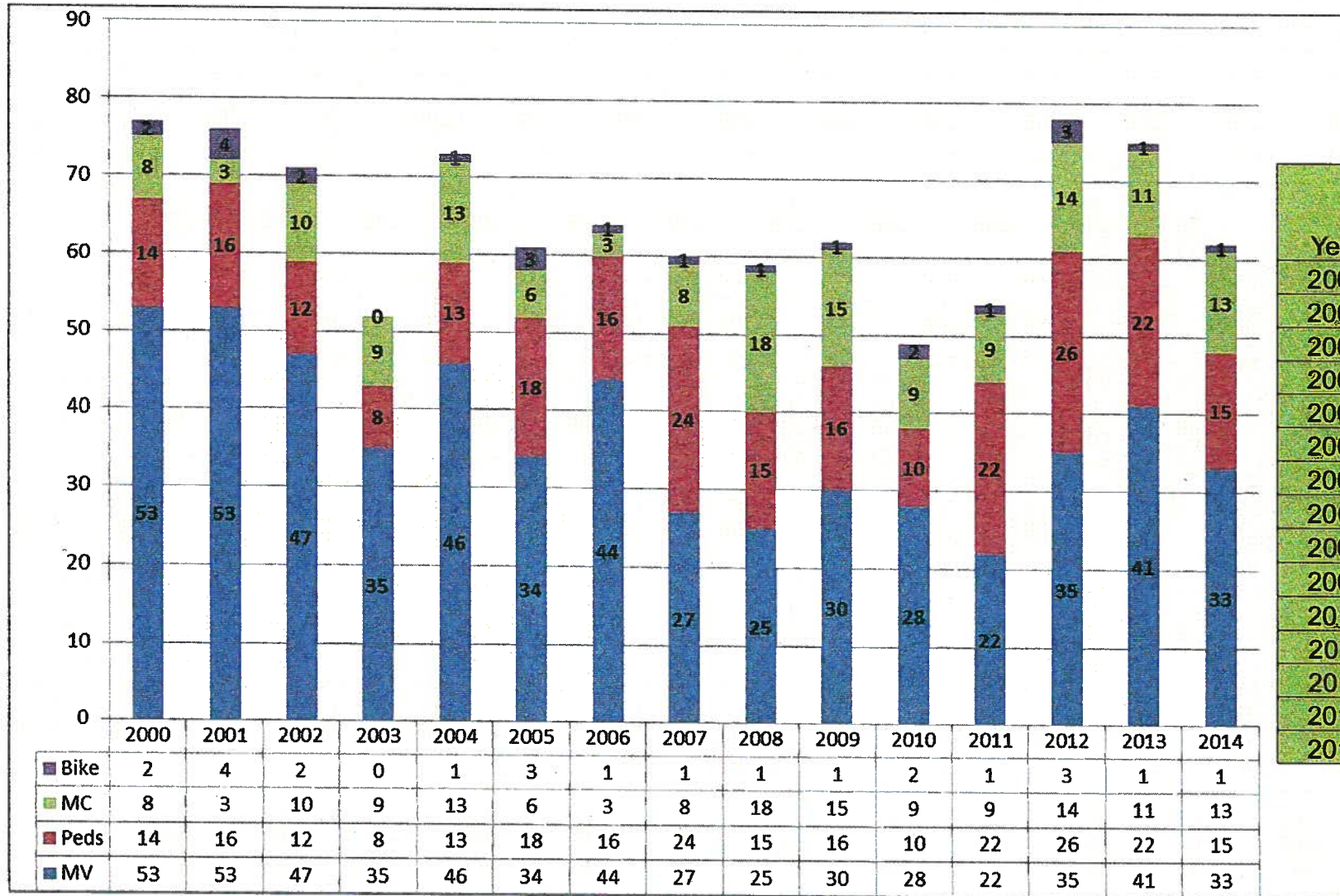
Includes: Burglary, Auto Theft, Thefts (Burglary of Vehicle & Other)

Property Crime Rate per 100,000





TRAFFIC FATALITIES IN CONTEXT



Year	Total Fatalities
2000	77
2001	76
2002	71
2003	52
2004	73
2005	61
2006	64
2007	60
2008	59
2009	62
2010	49
2011	54
2012	78
2013	75
2014	62

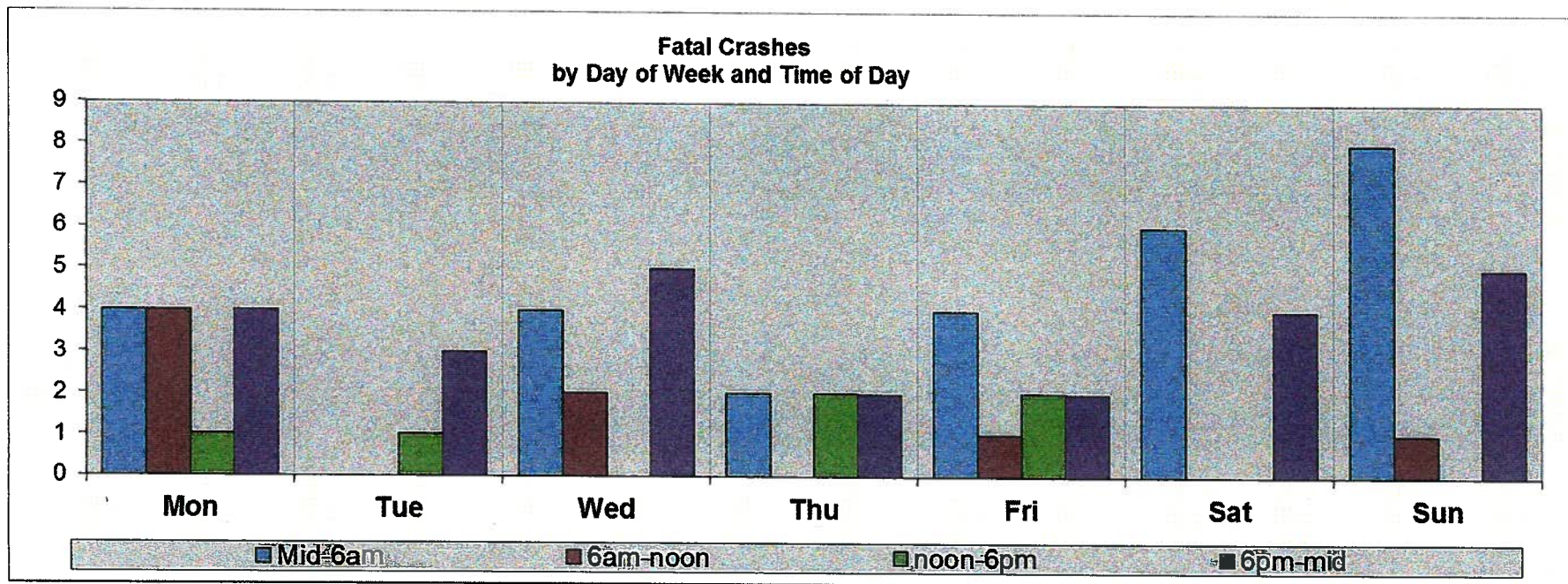


TRAFFIC FATALITIES: 2015

As of September 2, 67 traffic fatalities:

- 86% increase compared to same period in 2014
- 25% of fatal crashes involved drivers with suspended/no DL (17)
- 46% of fatalities involved impairment (31)
 - 22 of the 67 fatalities were impaired drivers
 - 9 of the 67 fatalities were impaired pedestrians

Most likely time of day/day of week for fatalities:





TRAFFIC FATALITIES: BACKUP

TRAFFIC FATALITY STATS					
8/30/2015	2015 YTD		2014 YTD		% change from 2014 to 2015
Number of Fatal Crashes	67		36		86%
Traffic Fatalities	76		43		77%
Fatality Vehicle:	# Fatalities	% of Total Fatalities	# Fatalities	% of Total Fatalities	% change
Pedestrian	23	30%	10	23%	130%
Bicyclist	1	1%	1	2%	0%
Motor Vehicle	41	54%	21	49%	95%
Motorcycle	11	14%	11	26%	0%
Fatality Type	# Fatalities	% of Total Fatalities	# Fatalities	% of Total Fatalities	% change
Motor Vehicle / Bicycle	1	1%	1	2%	0%
Motor Vehicle / Fixed Object	13	17%	5	12%	160%
Motor Vehicle / Motorcycle	10	13%	5	12%	100%
Motor Vehicle / Motor Vehicle	22	29%	12	28%	83%
Motor Vehicle / Pedestrian	23	30%	10	23%	130%
Motor Vehicle / Rollover / Run off Road / Other	1	1%	3	7%	-67%
18-Wheeler Involved	5	7%	2	5%	150%
Motorcycle / Fixed Object / Run off Road	1	1%	5	12%	-80%
Total Fatalities	76		43		77%
Fatality Factors	# Factors	% of Total Fatal Crashes	# Factors	% of Total Fatal Crashes	% change
Impaired Drivers	16	46%	18	50%	67%
Impaired Drivers - Pending toxicology results	6				
Total Impaired Drivers	22				
Impaired Pedestrians	6				
Impaired Pedestrians - Pending toxicology results	3				
Total Impaired Pedestrians	9		6	17%	
Ran red light	3	4%	8	22%	-63%
Speeding involved	17	25%	14	39%	21%
Pedestrian Failed to Yield ROW or crossed at Prohibited location	19	28%	5	14%	280%
Failure to Stop and Render Aid	6	9%	5	14%	20%
Fatality Factor Observations					
Drivers involved with Fatal Crashes who have suspended or no DL	17	25%	11	31%	55%
Victimology	# Fatalities	% of Total Fatalities	# Fatalities	% of Total Fatalities	% change
No Seatbelt (motor vehicle fatalities)	7	17%	8	38%	-13%
No Helmet (motorcycle and bike fatalities)	3	25%	6	50%	-50%



RESPONSE TIMES

Hot Shot (P0)						
	2014 MTD	2015 MTD	% Change	2014 YTD	2015 YTD	% Change
Call taker process time	1:00	1:03	5.0%	1:01	1:04	4.9%
Dispatch time	0:49	0:54	10.2%	0:51	0:58	13.7%
Dispatch to on-scene time	4:34	4:30	-1.5%	4:38	4:39	0.4%
Total response time	6:23	6:27	1.0%	6:30	6:41	2.8%
Calls Responded to	2,263	2,141	-5.4%	15,064	15,432	2.4%

Target 6:15

Urgent (P1)						
	2014 MTD	2015 MTD	% Change	2014 YTD	2015 YTD	% Change
Call taker process time	1:17	1:24	9.1%	1:18	1:23	6.4%
Dispatch time	0:59	1:01	3.4%	0:58	1:07	15.5%
Dispatch to on-scene time	6:08	6:07	-0.3%	6:07	6:17	2.7%
Total response time	8:24	8:32	1.6%	8:23	8:47	4.8%
Calls Responded to	5,266	5,313	0.9%	31,897	34,138	7.0%

Target 8:07

Total CAD Call Volume(s)						
	2014 MTD	2015 MTD	% Change	2014 YTD	2015 YTD	% Change
Dispatched Calls	29,843	29,711	-0.4%	195,755	196,735	0.5%
Self-Initiated Calls	21,447	20,480	-4.5%	148,928	133,937	-10.1%
Total calls responded to	51,290	50,191	-2.1%	344,683	330,672	-4.1%

Total Phone Call Volume(s)						
	2014 MTD	2015 MTD	% Change	2014 YTD	2015 YTD	% Change
911 Calls	93,197	100,871	8.2%	576,316	639,889	11.0%
Non-Emergency Calls	20,667	21,261	2.9%	145,349	140,051	-3.6%
Total Phone Call Volume	113,864	122,132	7.3%	721,665	779,940	8.1%

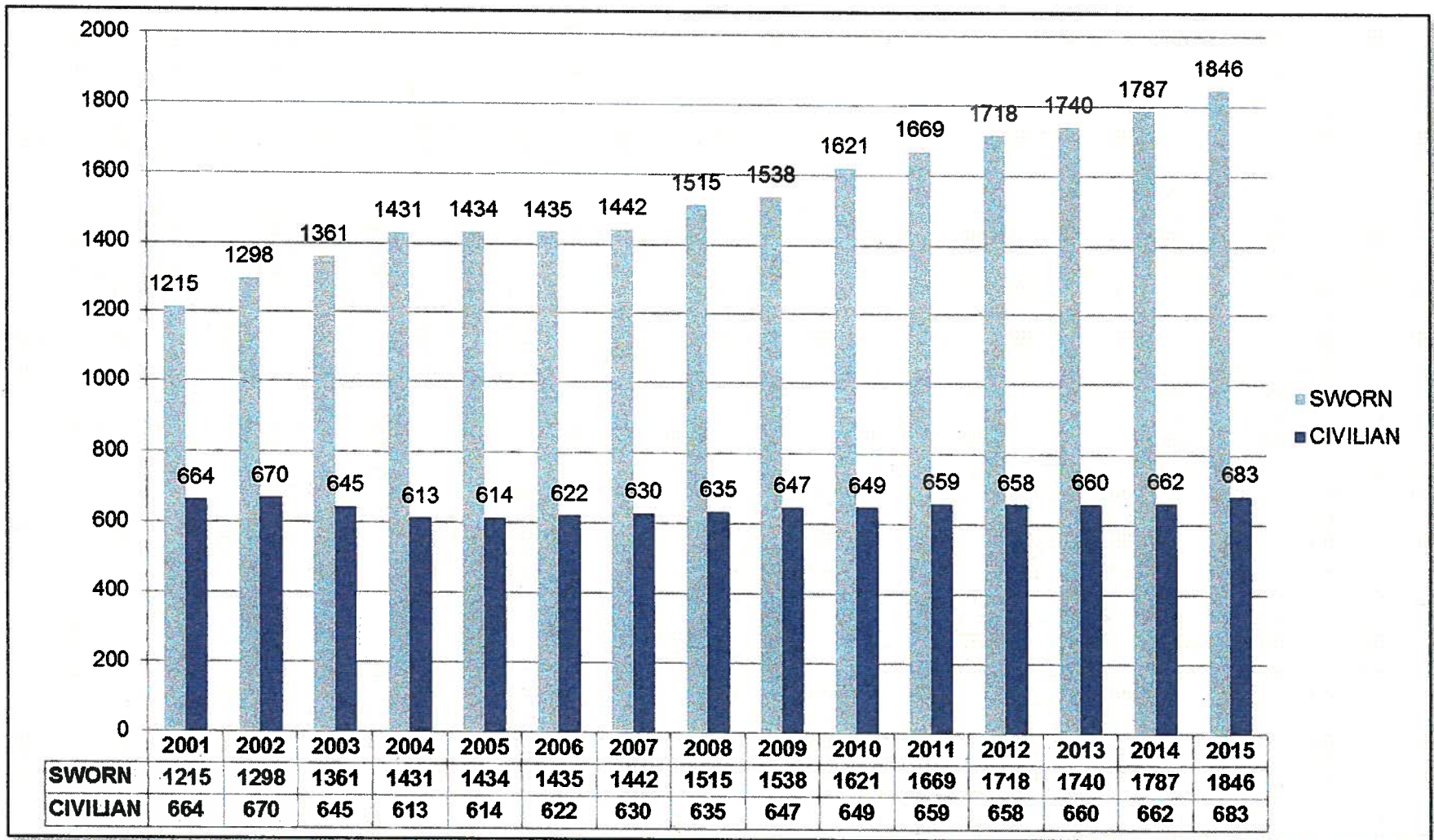


BUDGET OVERVIEW

- FY15 Amended Budget 368.9 Million
- FY16 Proposed Budget 394 Million
- New Staffing Methodology
- City Manager's Proposed Budget Includes:
 - 82 New Patrol Positions
 - Training Shift
 - Additional Patrol Shifts
 - 3 Supervisor Positions for Pal/Explorer and Property Crimes Task Force
 - 2 Civilian Open Records Management
 - Communications-Year 2 of 3 Year Plan
 - 15 Emergency 911 Call-takers
 - 2 Communications Training Specialists
 - 2 Communications Supervisors



CURRENT STAFFING



Note: Cadets rolled up under Civilian numbers



POLICE OVERSIGHT

- Chain of Command
- Internal Affairs
- Police Monitor
- Civilian Review Panel



Questions?