



Briefing to City Council OSES Committee

on Shoal Creek Conservancy Collaborative Agreement

City of Austin
Parks & Recreation Department
September 23, 2015

Shoal Creek Watershed

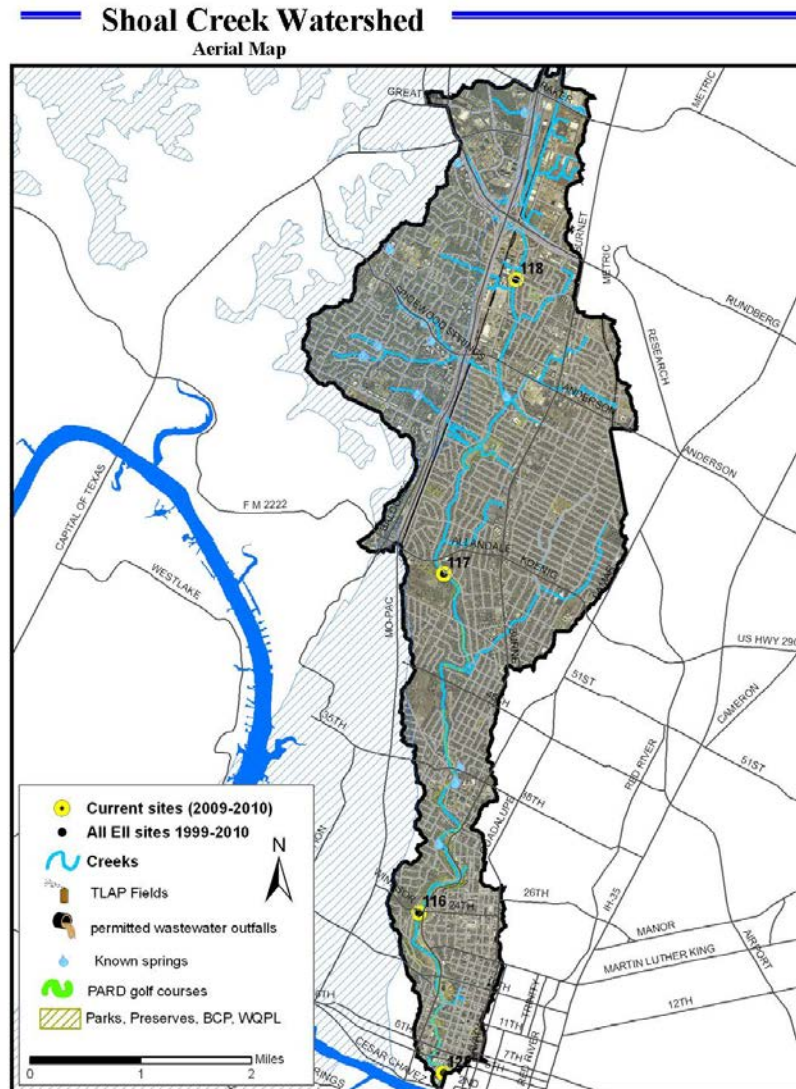


Watershed

- Braker Lane to Lady Bird Lake
- Watershed Area - 13 Square Miles
- Creek Length – 11 miles

Parks

Trails



City Department Responsibilities



- Responsible for creeks, stream banks, riparian areas, water quality, and flooding



- Responsible for roads, bridges, urban trails and sidewalks



- Responsible for parks, greenbelts and recreational trails

Shoal Creek Conservancy



- Shoal Creek Conservancy is dedicated to restoring, protecting and improving the Shoal Creek Watershed, building a strong community and providing a voice for Shoal Creek.
- Water, Trails, Parks, History



Collaborative Agreement Objectives



- Establish Shoal Creek Conservancy as a key partner for the Shoal Creek Greenbelt, Trail, Riparian Area and Watershed
- Establish the key activities of the Shoal Creek Conservancy including advocating for and helping to:
 - develop trails, parks and open space plans
 - assisting with implementation of plans through capital improvements, maintenance projects and advocacy
- Describe the approach to collaboration among City Departments and the Shoal Creek Conservancy





Approach to Collaboration

- Roles and Responsibilities
 - ❑ Community Building, Education & Advocacy
 - ❑ Fundraising
 - ❑ Planning
 - ❑ Capital Improvements
 - ❑ Maintenance & Operations

Current Joint Initiatives



Planning

■ Watershed Plan

- ❑ WPD staff is developing plans that analyze watershed data; identify problems and priorities; and catalogue existing and potential future solutions
- ❑ Under development: North Urban (Johnson/ Shoal /Waller) and South Urban (West Bouldin/East Bouldin/Blunn/Harper's Branch)
- ❑ Working with SCC to explore opportunities to partner on scope

■ Trail Plan

- ❑ Develop a Shoal Creek Trail Plan for the Shoal Creek Watershed
- ❑ Develop a strategy by December 31, 2015

■ Parks and Greenbelt Plan

- ❑ Develop a parks and greenbelt plan for the Shoal Creek Watershed
- ❑ Develop a strategy by December 31, 2015



Current Joint Initiatives

Implementation

- Urban Trail & associated Stream and Greenbelt Improvements
 - Preliminary engineering for .8 mile urban trail and associated stream and trailside greenbelt improvements from 5th to 15th Streets
 - Initial step to prepare for construction and improvements
 - Initiated with Density Bonus Funding advocated for by SCC
- Duncan Park Renovation with Habitat Meadow
 - SCC to raise funds for a habitat meadow as part of the Duncan Park Renovation
- Bridge Restoration & Lighting
 - SCC is leading projects to:
 - Restore the historic West 6th Street Bridge
 - Light the Lamar Blvd and 12th Street Bridges

Current Joint Initiatives



Maintenance

- Bamboo Removal & Restoration
 - SCC leading a project to remove invasive bamboo and restore greenbelt landscape

- SCC Volunteer Maintenance @ Shoal Creek Greenbelt
 - Mobilizes volunteers and hosts regular workdays in collaboration with Parks staff to enhance the Shoal Creek Greenbelt
 - SCC organized post flood response volunteer service days



Current Joint Initiatives

Advocacy/Programming

- Annual Spring and Fall Walking Tour Series
 - SCC led educational series
- Restoration Workshop
 - SCC led educational workshop
- Ongoing Advocacy and Community Building