



Open Space, Environment & Sustainability Subcommittee

City of Austin's Tree Regulations

Michael Embesi
Development Services Department
cityarborist@austintexas.gov
512-974-1876

August 26, 2015

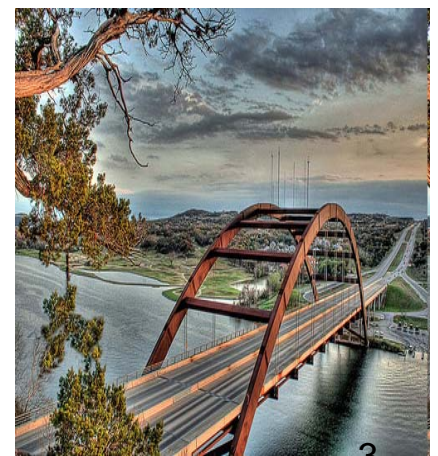
Presentation Overview

- ❖ **City Tree Historical Initiatives**
- ❖ **Benefits of Trees**
- ❖ **City's Tree Maintenance & Operations**
- ❖ **Development Services Department's Tree Division Objectives**
- ❖ **Tree Regulations**
- ❖ **Community Effort**



City Tree Initiatives

- **Tree Preservation Ordinance (1983)**
- **Urban Heat Island Resolution (2005)**
- **Tree Taskforce (2006)**
- **Mayor's Climate Change Initiative (2007)**
- **Resolution recognizing urban forest as infrastructure (2008)**
- **Tree Summit (2009)**
- **Heritage Tree Ordinance (2010)**
- **Resolution for Comprehensive Urban Forest Plan (2014)**



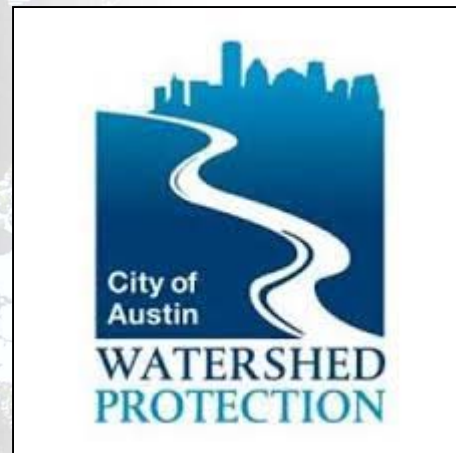
Tree Benefits

Infrastructure that Improves with Time

- Cleans air
- Stores and filters water
- Minimizes erosion
- Sequesters carbon
- Wildlife habitat
- Screen views/noise
- Property value
- Sense of place
- Aesthetics
- Shade



Department's Forestry Maintenance & Operations



Development Services Department Tree Division

**Acting Director
Rodney Gonzales**

**Assistant Director
George Adams**



Our vision, in making Austin the most livable city in the country, is to personify Austin's trees by ensuring their preservation, promoting their benefits, and planning their continual relationship as an integral part of our community

A Venn diagram with three overlapping circles. The top circle is purple and labeled 'PROMOTION'. The bottom-left circle is green and labeled 'PRESERVATION'. The bottom-right circle is blue and labeled 'PLANNING'. The intersections contain specific tasks related to urban forestry.

PROMOTION

- Disease Assessment and Mapping
- Presentation to neighborhood and development communities
- State of the Environment Report
 - Tree Care Information

- Walk-In Customer Service
- Site Plan Review
- Tree Permitting and Inspection
- Response to CAFs, RFIs, and 3-1-1 calls (weekends and evenings)

PRESERVATION

- Plan Implementation (Imagine Austin, Urban Forest Management, Community Wildfire Prevention)
 - Resource Management
 - Standards of Care
- Interdepartmental Training

PLANNING

Regulatory Jurisdiction

- **Tree Preservation**
- **Tree Protection**
- **Tree Replacement**



Levels of Tree Ordinance Protection



8" and larger

- Required to be surveyed on commercial site plan submittals
-

Levels of Tree Ordinance Protection



8" and larger

- Required to be surveyed on commercial site plan submittals



19" and larger are PROTECTED SIZE TREES

- All species are protected
- Tree permit is required for impacts or removal (residential and public)

Levels of Tree Ordinance Protection



8" and larger

- Required to be surveyed on commercial site plan submittals



19" and larger are PROTECTED SIZE TREES

- All species are protected
- Tree permit is required for impacts or removal (residential and public)



24" and larger can be HERITAGE TREES

- Only specific species qualify
- Requires a variance for removal or impacts that exceed code requirements
- Variances can be administrative
- Greater penalties for unpermitted impacts

Levels of Tree Ordinance Protection



8" and larger

- Required to be surveyed on commercial site plan submittals



19" and larger are PROTECTED SIZE TREES

- All species are protected
- Tree permit is required for impacts or removal (residential and public)



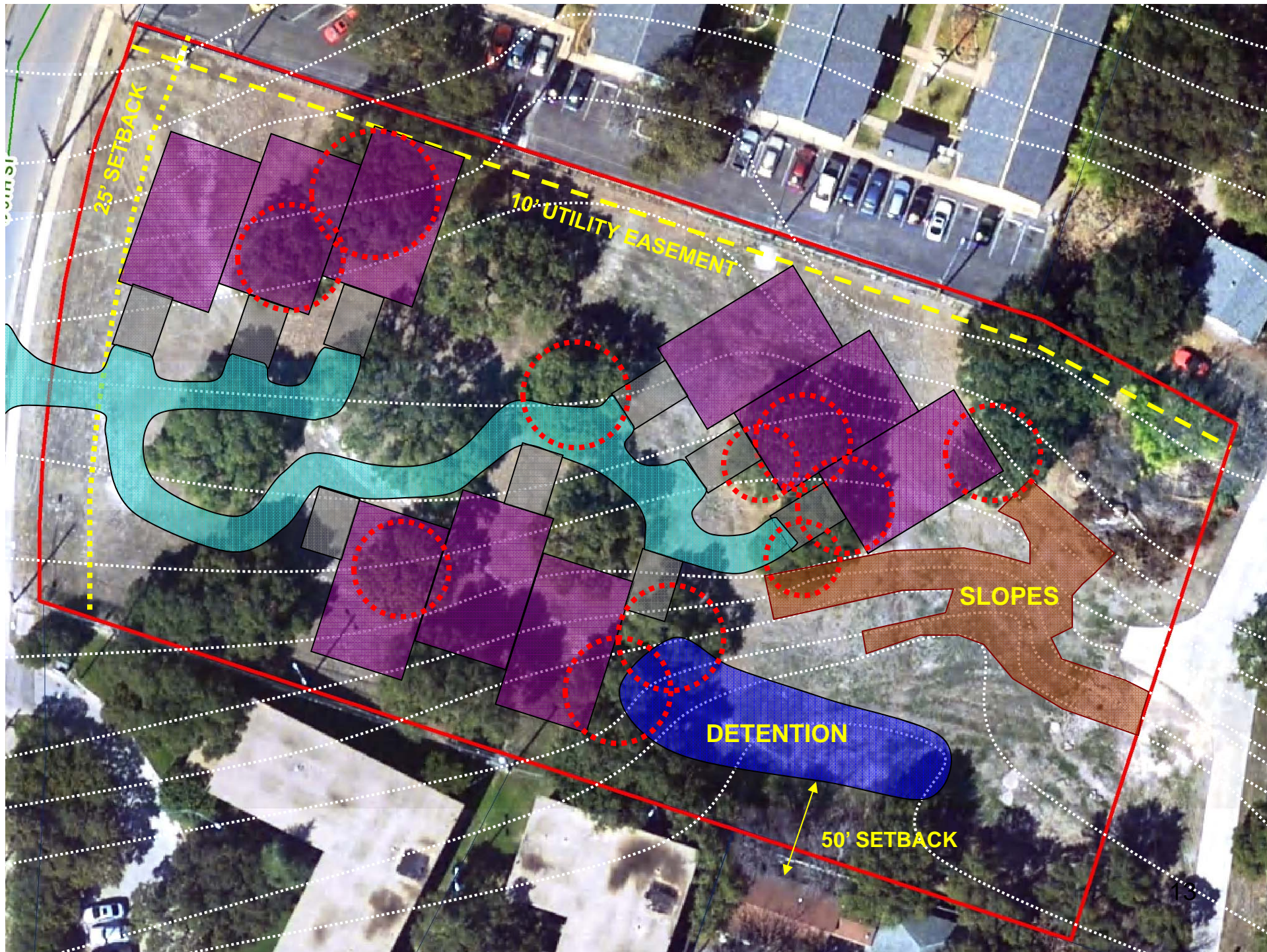
24" and larger can be HERITAGE TREES

- Only specific species qualify
- Requires a variance for removal or impacts that exceed code requirements
- Variances can be administrative
- Greater penalties for unpermitted impacts



30" and larger HERITAGE TREES

- Proposed variances must go through the public process



Tree Ordinance Generalities

Trunk Size	Removal Determined By	Meaning	Mitigation
8 – 19	Applicant	Where Feasible	50%
19 <	With Staff	Trees Within Project	100%
24–30*	With Staff	Preserved	300%
30* <	With Commission	Public Hearing	300%



*Heritage Tree Species

Stakeholders

- ✿ **Citizens & Stewards**
- ✿ **Federal & State Partners**
- ✿ **Boards & Commissions**
- ✿ **City Council & Upper Management**
- ✿ **Design Professionals**
- ✿ **City Reviewers & Inspectors**
- ✿ **Neighborhood Groups**



Thank You

