

SUBDIVISION REVIEW SHEET**CASE NO.:** C8-2015-0072.0A**P.C. DATE:** October 13, 2015**SUBDIVISION NAME:** RREEF Domain Lot Q1 Subdivision**AREA:** 67.193**LOT(S):** 2**OWNER/APPLICANT:** RREEF Domain LP
(Ben Bufkin)**AGENT:** Bury-Aus, Inc.
(Lauren Beavers)**ADDRESS OF SUBDIVISION:** KRAMER LN**GRIDS:** L32**COUNTY:** Travis**WATERSHED:** Walnut Creek**JURISDICTION:** Full Purpose**EXISTING ZONING:** MI-PUD**DISTRICT:** 7**NEIGHBORHOOD PLAN:** North Burnet Gateway**PROPOSED LAND USE:** Commercial, Multi Family**ADMINISTRATIVE WAIVERS:** None**VARIANCES:** None**SIDEWALKS:** Sidewalks will be provided on both sides of all internal streets and the subdivision side of boundary streets.**DEPARTMENT COMMENTS:** The request is for approval of the RREEF Domain Lot Q1 Subdivision. The proposed plat is composed of 2 lots on 67.193 acres. The newly created Lot Q1 will consist of 2.169 acres. The applicant proposes to resubdivide an existing lot into two lots for commercial/multi-family use. All City of Austin utilities are available. Parkland dedication has been satisfied by payment of fees in lieu of land dedication. The developer will be responsible for all costs associated with any required improvements.**STAFF RECOMMENDATION:** The staff recommends approval of the plat. This plat meets all applicable State and City of Austin LDC requirements.**PLANNING COMMISSION ACTION:****CITY STAFF:** Don Perryman
e-mail: don.perryman@austintexas.gov**PHONE:** 512-974-2786



BURY

221 West Sixth Street, Suite 600
Austin, Texas 78701
Tel. (512) 328-0011 Fax (512) 328-0325
TBPE # F-1048 TBPLS # F-10107500
Copyright © 2015

LOT Q1
KRAMER LANE

ENDEAVOR REAL ESTATE GROUP

SITE LOCATION MAP

DATE: 03/12/2015

SCALE: N.T.S.

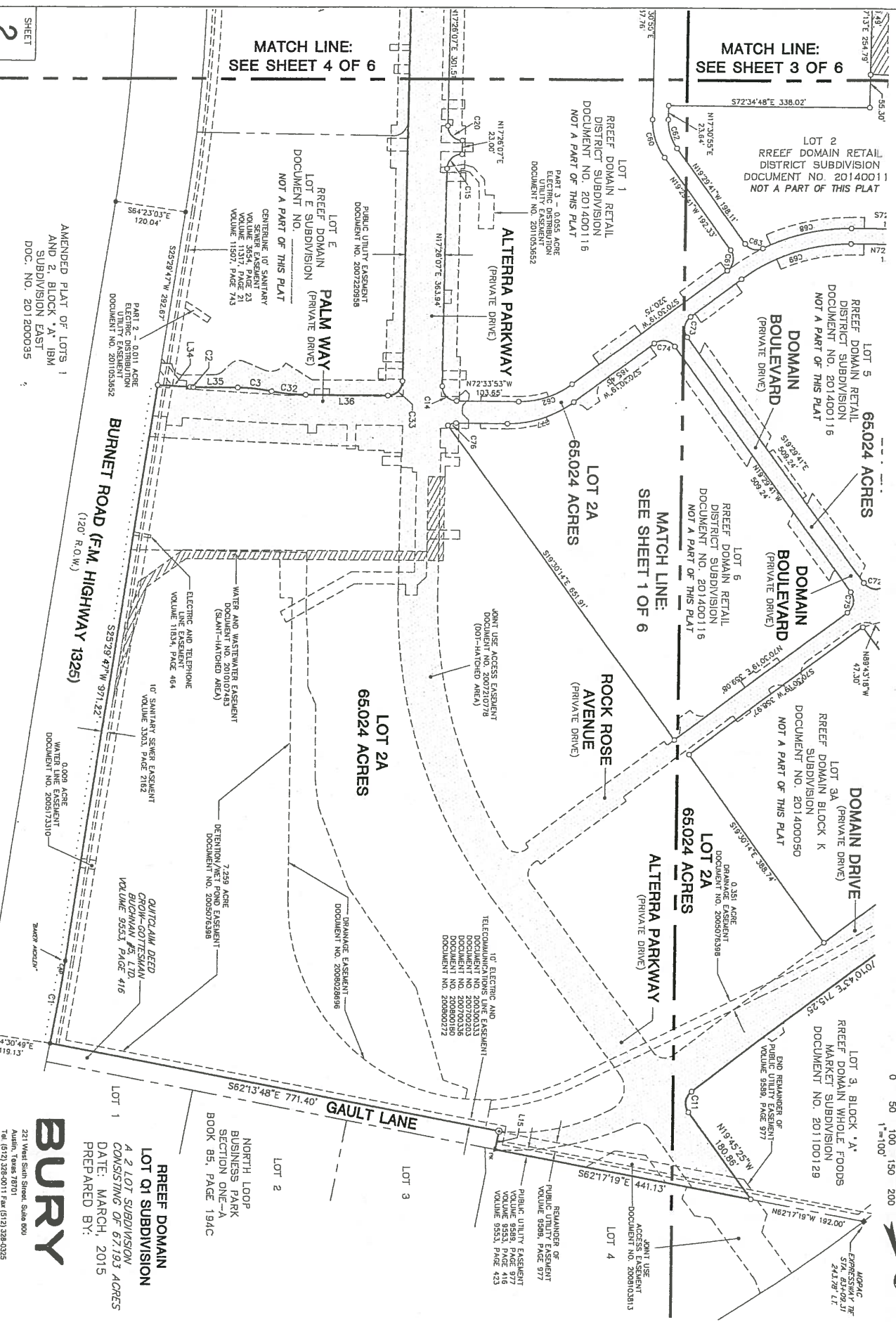
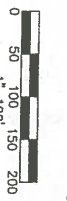
DRAWN BY: RWM

FILE:

PROJECT No. 101231.10072

REEF DOMAIN LOT Q1 SUBDIVISION

BENIG A RESUBDIVISION OF LOT 2A, REEF DOMAIN LOT E SUBDIVISION



**REEF DOMAIN
LOT Q1 SUBDIVISION
CONSISTING OF 67.193 ACRES
DATE: MARCH, 2015
PREPARED BY:**

BURY

221 West Sixth Street, Suite 800
Austin, Texas 78701
Tel: (512) 328-0011 Fax: (512) 328-0325
Toll Free: 1-848-789-1515 #F-10107590
Copyright © 2015

Drawn by: KIM Approved by: MJD Project No.: 1801231-10072 File #: 1801231\072\101231072PL1.dwg

SEE KEY MAP: SHEET 1 OF 6

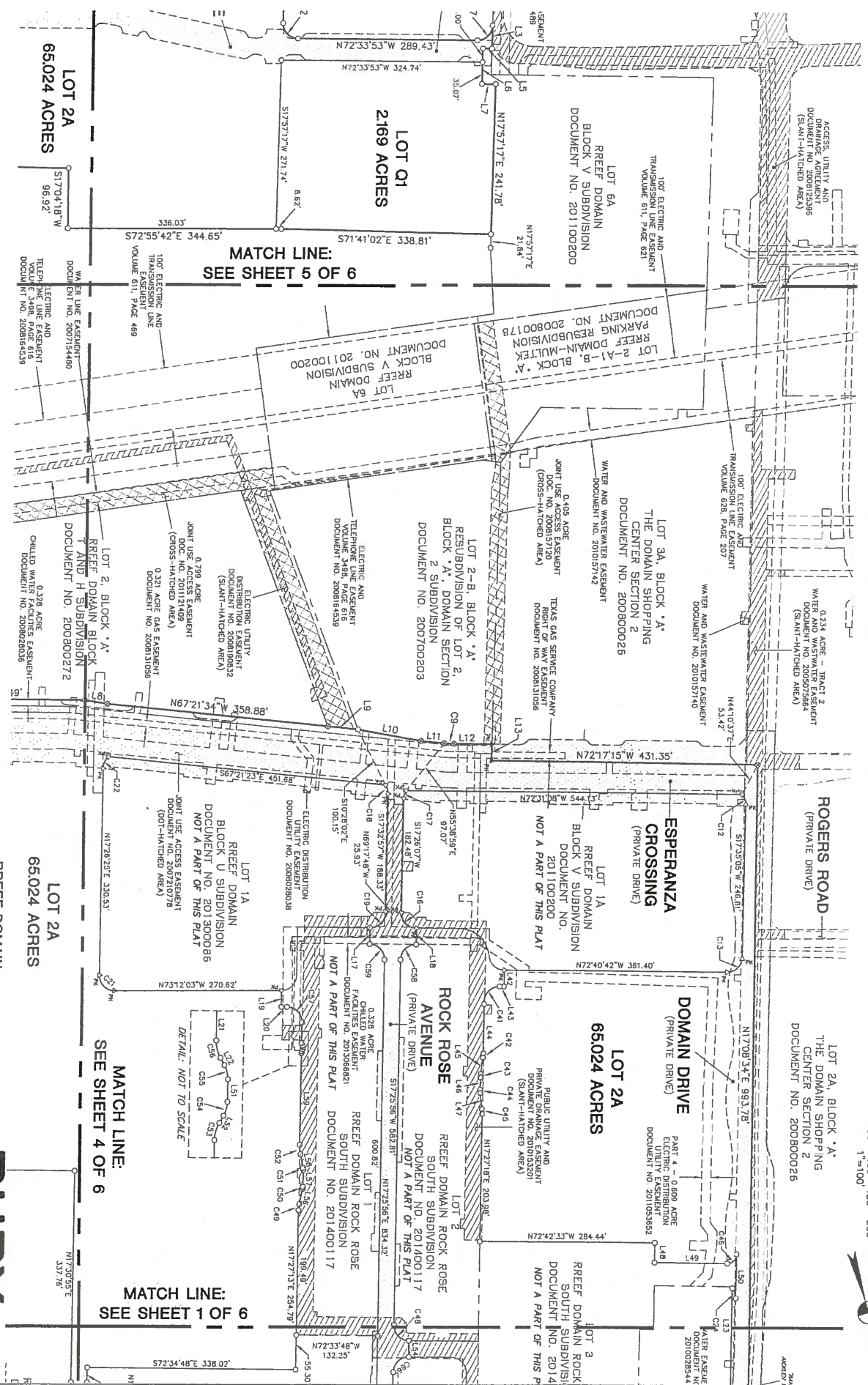
SHEET
2
OF 6

MATCH LINE:
SEE SHEET 4 OF 6

MATCH LINE:
SEE SHEET 3 OF 6

REEF DOMAIN LOT Q1 SUBDIVISION

BEING A RESUBDIVISION OF LOT 24, REEF DOMAIN LOT E SUBDIVISION



SHEET
3
OF 6

SEE KEY MAP: SHEET 1 OF 6

REEF DOMAIN
LOT Q1 SUBDIVISION
A 2 LOT SUBDIVISION
CONSISTING OF 67,193 ACRES
DATE: MARCH, 2015
PREPARED BY:

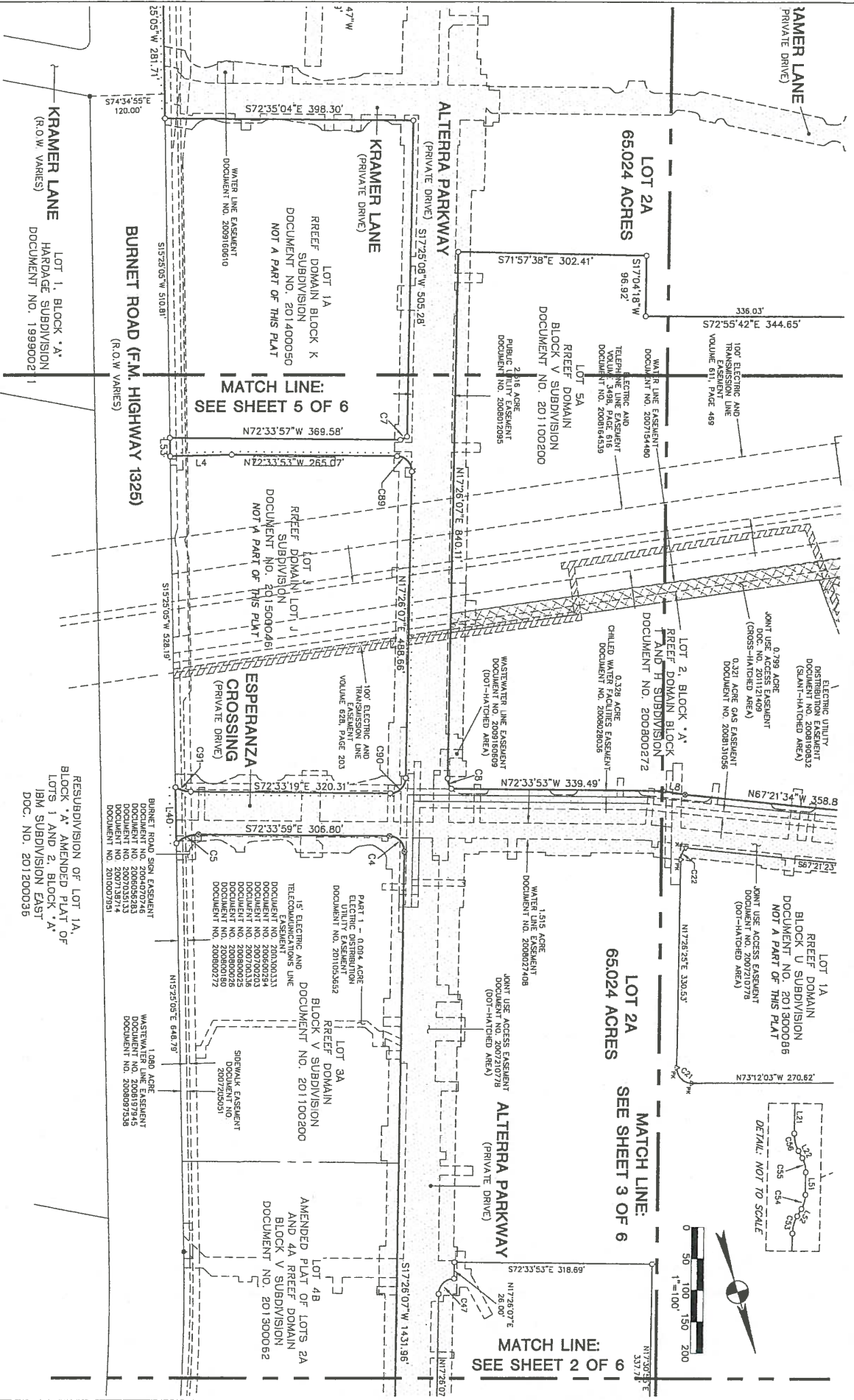
BURY

221 West Sixth Street, Suite 600
Austin, Texas 78701
Tel: (512) 226-0011 Fax: (512) 226-0026
TBP# F-1048 TBP#S #F-10107500
Copyright © 2015

Drawn by: KMW Approved by: MLL Project No.: R0101231-0002 File#: H120121072\101231072\1.dwg
CB-2015-

REEF DOMAIN LOT Q1 SUBDIVISION

BEING A RESUBDIVISION OF LOT 24, REEF DOMAIN LOT E SUBDIVISION



SHEET
4
OF 6

SEE KEY MAP: SHEET 1 OF 6

REEF DOMAIN
LOT Q1 SUBDIVISION

BURY

RESUBDIVISION OF LOT 1A,
BLOCK 'A', AMENDED PLAT OF
LOTS 1 AND 2, BLOCK 'A',
1B1 SUBDIVISION EAST
DOC. NO. 201200036

221 West Sixth Street, Suite 800
Austin, Texas 78701
Tel. (512) 326-0011 Fax (512) 326-0232
Toll-free 1-800-799-9999
Copyright © 2015

Drawn by: RMA Approved by: AJJ Project No.: R0101231-1002 Date: 10/23/2015 10:23:02 AM

