



## MEMORANDUM

\*\*\*\*\*

**TO: Mr. Gabriel Rojas, Chair  
Zoning and Platting Commission Members**

**FROM: Victoria Haase  
Planning and Zoning Department**

**DATE: November 3, 2015**

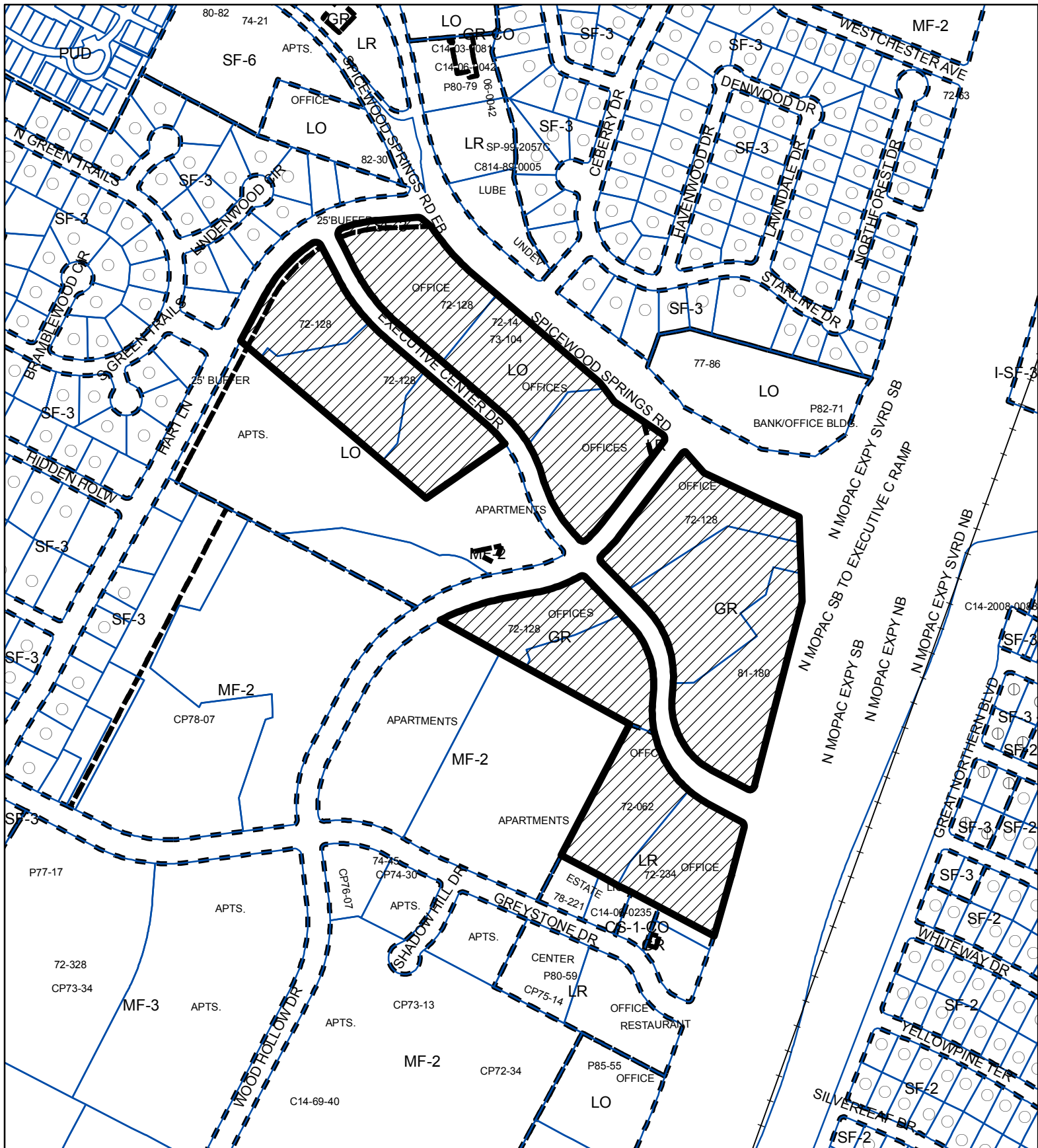
**SUBJECT: UPDATE - C14-2014-0120 – Austin Oaks PUD**


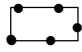

\*\*\*\*\*

On September 15, 2015, the Zoning and Platting Commission indefinitely postponed this rezoning case in order to allow a charrette involving the Applicant, Neighborhood representatives and City Staff to take place. The Commission instructed Staff to provide an update regarding the charrette process on November 3, 2015.

Since the last public hearing, representation of this case has changed from Drenner Group to Michael Whellan of Graves Dougherty Hearon & Moody. The newly appointed Applicant met with representatives of several neighborhood groups on October 7, 2015 with a formal introduction and will meet with this same group on Tuesday, October 27, 2015, to discuss details of the charrette process. While the Applicant requested that Staff suspend review efforts until further notice, Staff is bound by Code to complete the review and a Master Comment Report for Update 2 has been issued.

The next scheduled update for this rezoning case will be held sometime in January, 2016.



-  SUBJECT TRACT
-  PENDING CASE
-  ZONING BOUNDARY

## PLANNED UNIT DEVELOPMENT

ZONING CASE#: C814-2014-0120

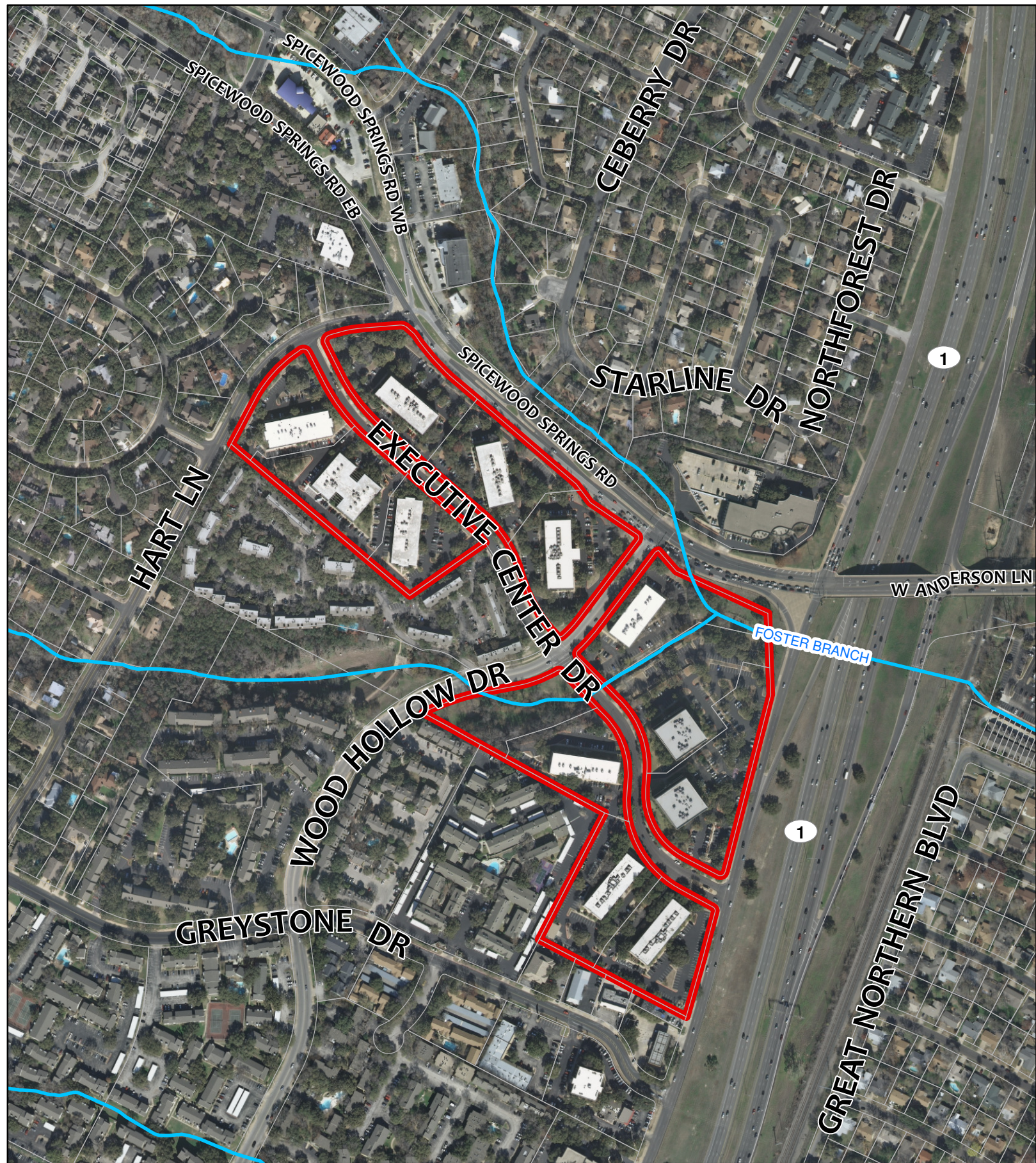
1" = 400'

This product is for informational purposes and may not have been prepared for or be suitable for legal, engineering, or surveying purposes. It does not represent an on-the-ground survey and represents only the approximate relative location of property boundaries.

This product has been produced by CTM for the sole purpose of geographic reference. No warranty is made by the City of Austin regarding specific accuracy or completeness.







### ZONING

ZONING CASE#: C814-2014-0120  
ZONING CHANGE: GR, LR, LO, SF-3 to PUD  
LOCATION: 3409 - 3737 Executive Center Dr.,  
7601-7719 Wood Hollow Dr.

SUBJECT AREA: 31.37 ACRES  
MANAGED BY: HAASE

