

# 6<sup>th</sup> Street Historic District Proposed Arch

Historic Landmark Commission  
Certificate of Appropriateness  
Committee

11-30-2015

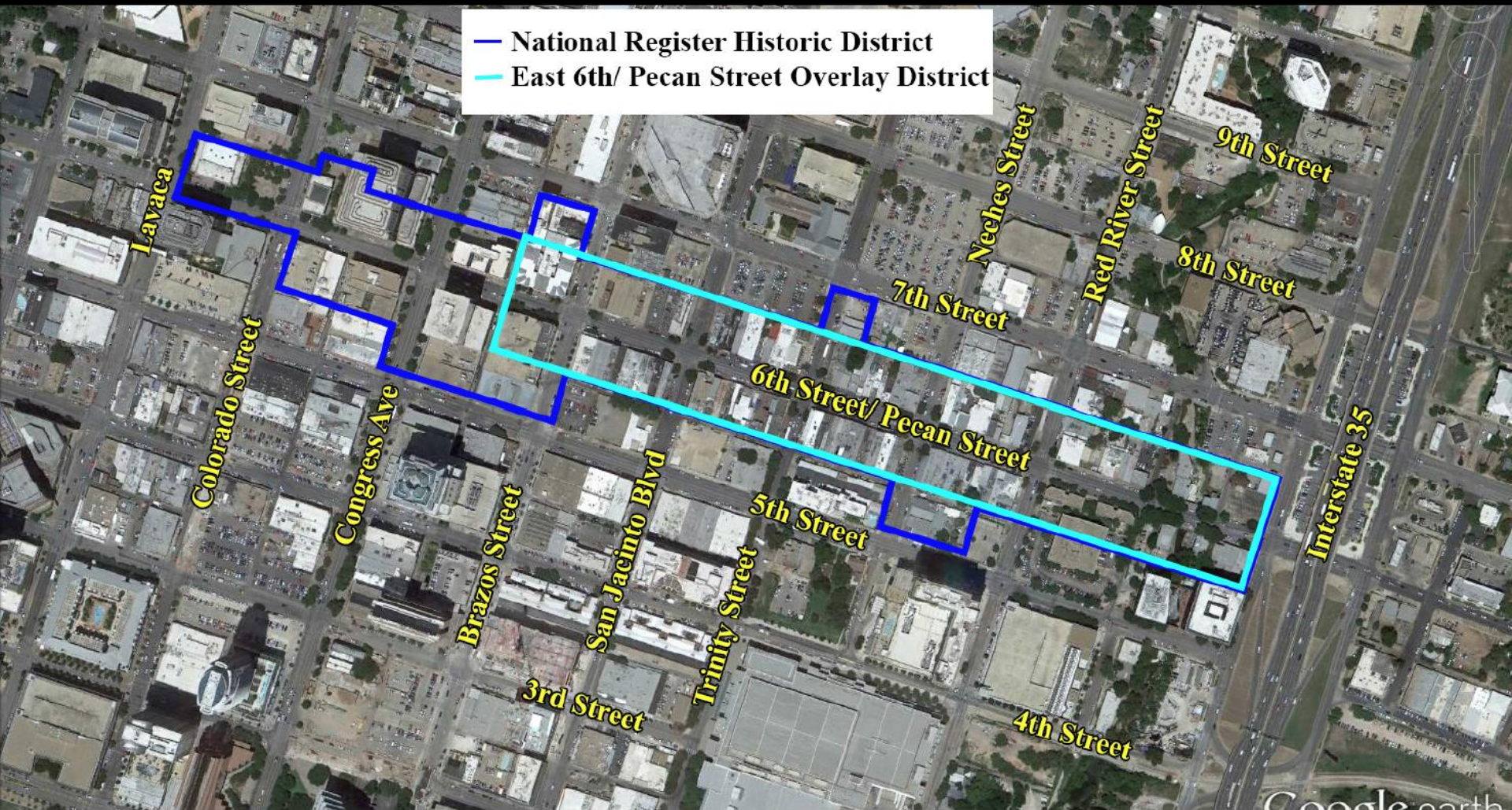
# Request

---

- Application
  - Formal Certificate of Appropriateness not submitted
  - Agenda item to review proposed conceptual arch
- Request
  - Approve conceptual arch design
  - Architects and engineers can move forward with design

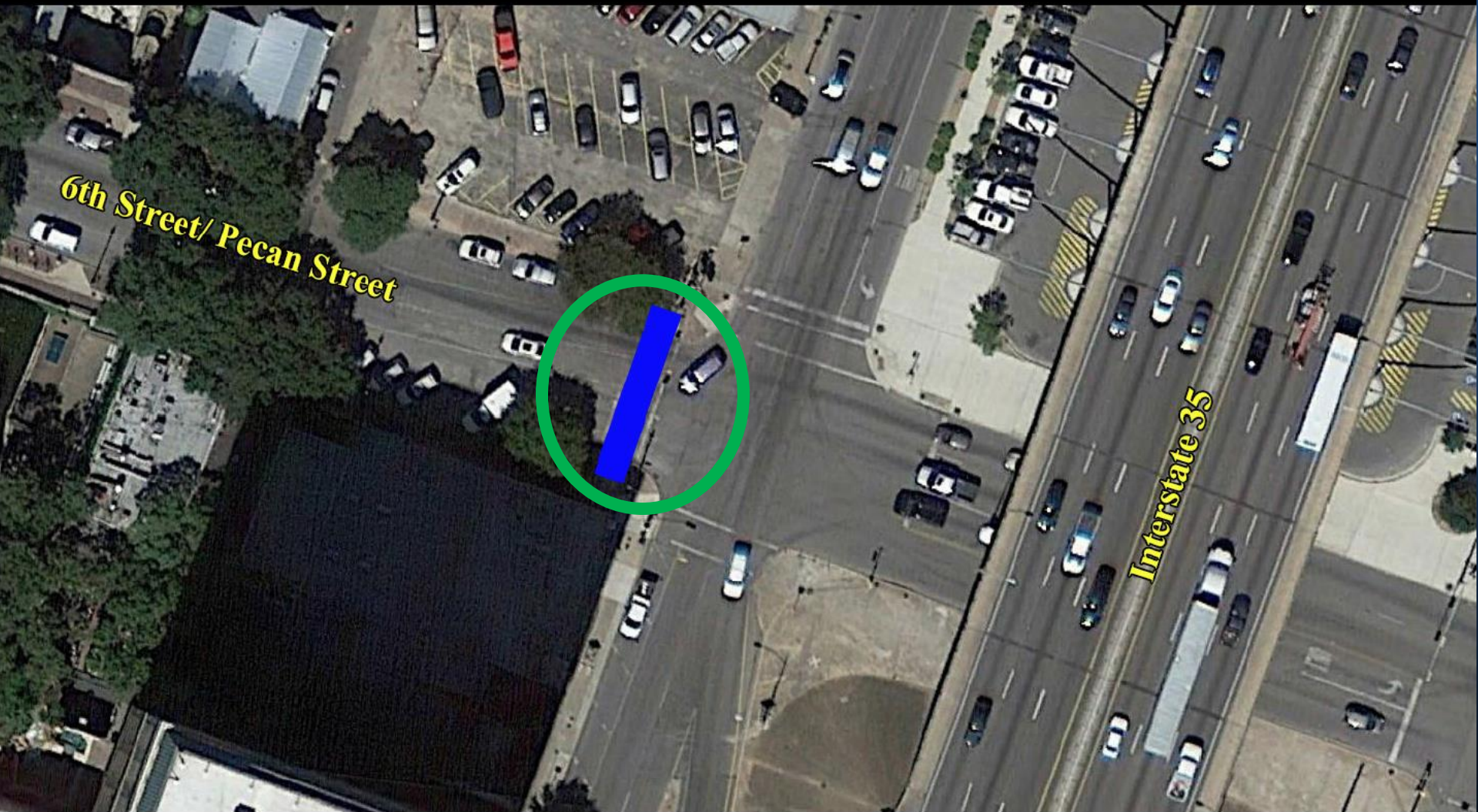
# Location of Historic District

## Historic and East 6th Street/Pecan Street District



# Location of Arch

## Arch Location



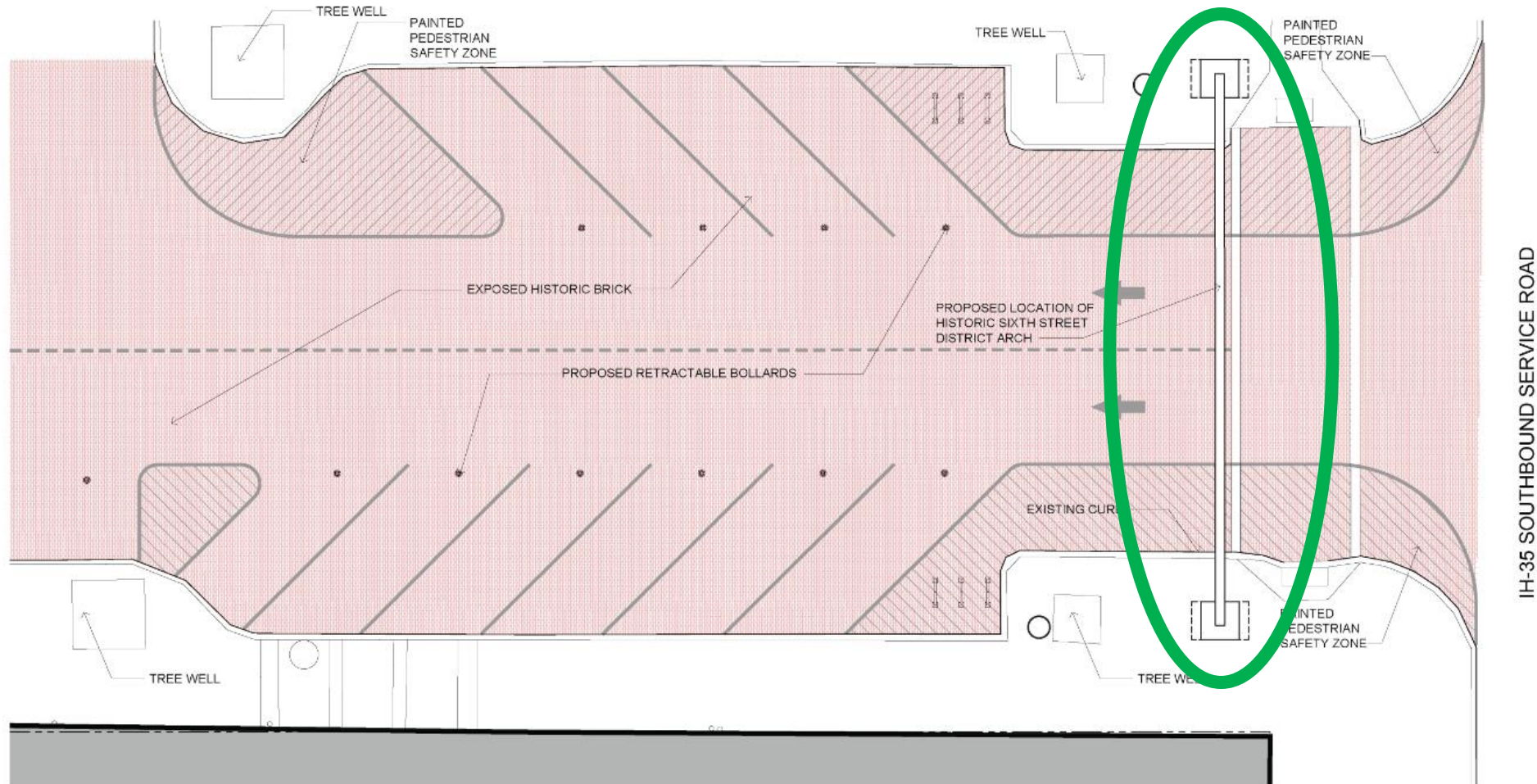
# Arch Placement

---

- Location
  - On 6<sup>th</sup> street near frontage road to IH35
  - Pillars in existing tree wells
  - Possible plaque with designation
- Reason for location
  - Avoiding the underground utilities
  - Prime entrance to district
  - Distance from traffic

# Location of Arch

IH-35 INTERSECTION WITH HEAD-IN PARKING ON BOTH SIDES - PROPOSED GATEWAY ARCH SHOWN



# South sidewalk of 6<sup>th</sup> St



# North sidewalk of 6<sup>th</sup> St



# Location of Historic Structures

## 6th Street Historic Structures



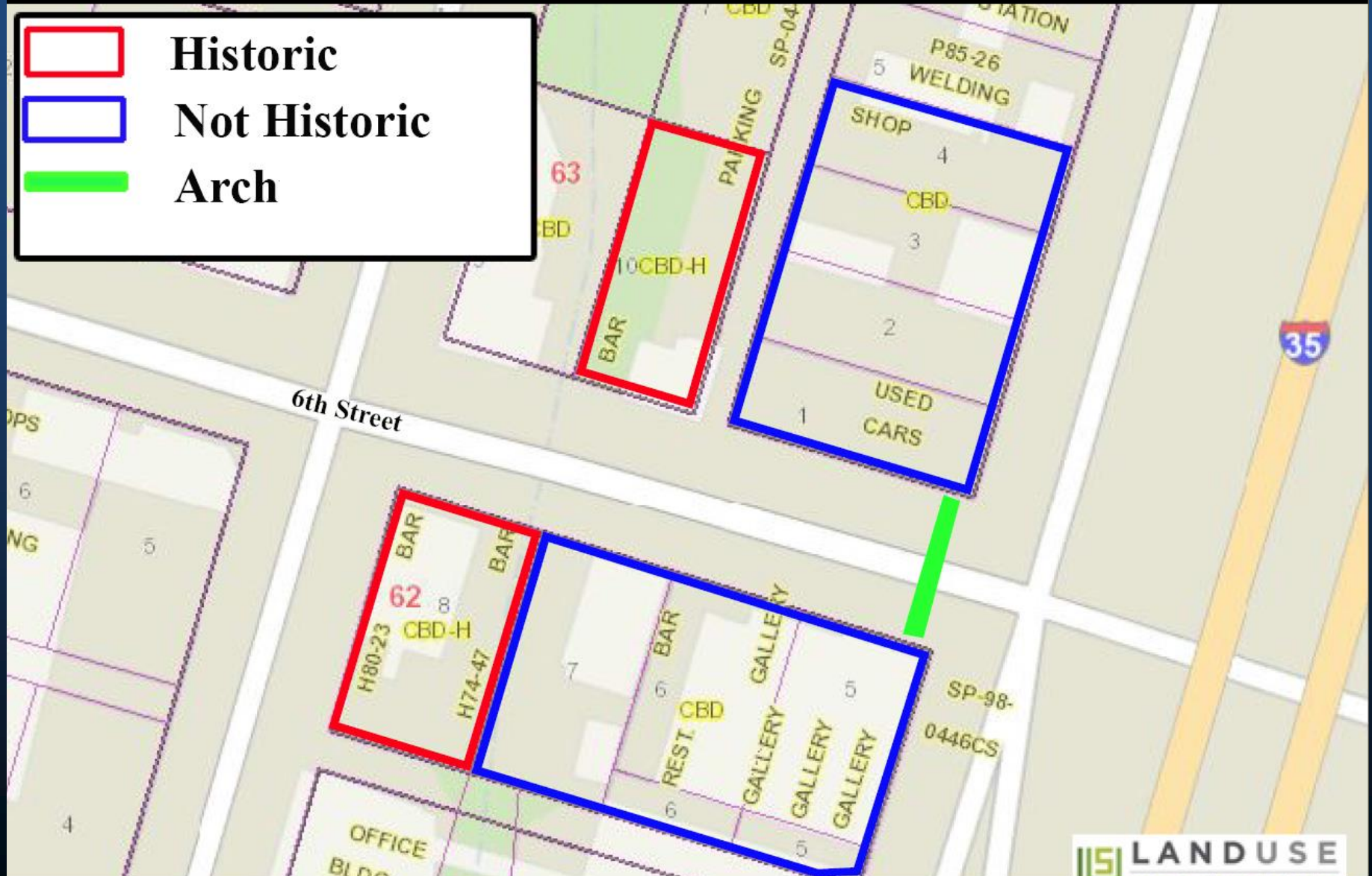
**Historic**



**Not Historic**



**Arch**



# Arch Vision Presented 9-14-15



# Committee Recommendations 9-14-15

---

- Certificate of Appropriateness Review Committee
  - Support for arch over East 6<sup>th</sup> Street
  - Reviewed current proposed arch:
    - Too heavy and dense
    - Design is too uniform
  - Requests:
    - Arch blend in with historically simple architecture of buildings
    - Less industrial and dominating feel
    - Include an ornament/light on top of the pillars
    - Materials used should reflect the masonry and characteristics of existing buildings on 6th Street
    - Incorporate a flared pillar design

# Building Materials of 6<sup>th</sup> Street



# Building Materials of 6<sup>th</sup> Street



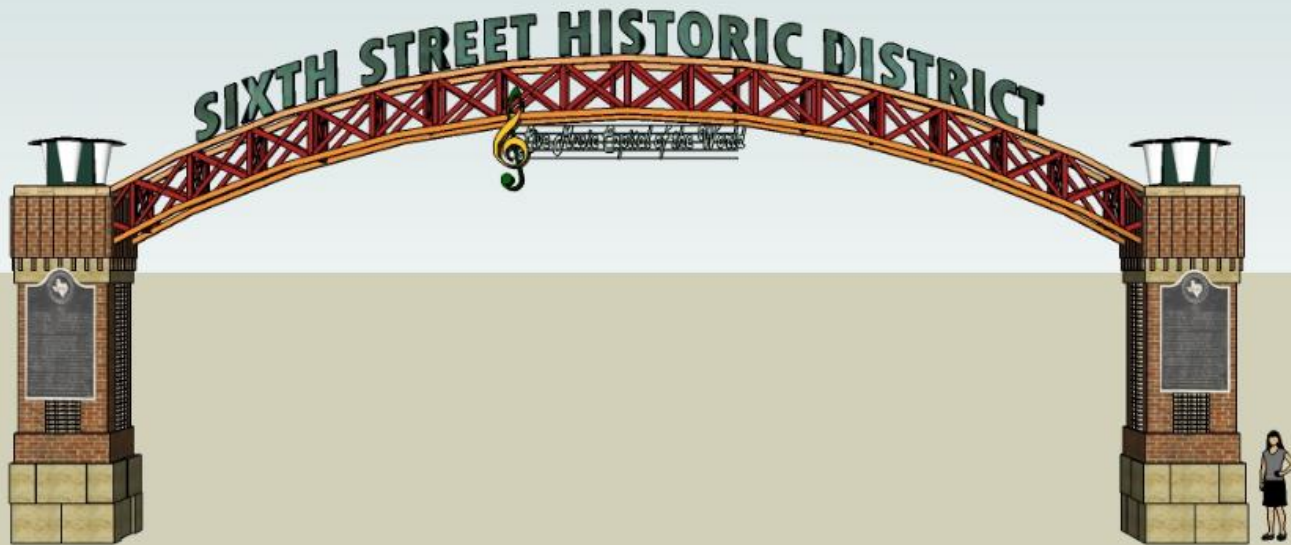
# Building Materials of 6<sup>th</sup> Street



# Building Materials of 6<sup>th</sup> Street



# Revised Arch Vision



# 6<sup>th</sup> Street West Perspective

---



# 6<sup>th</sup> Street East Perspective

---



# Arch Details

---

- Size:
  - Height from road to bottom of arch = 22"  
top of letters = 27'
  - Pillar height = 21'-25'  
haunch = 16"
  - Width = inner 51' 11" outer 61' 11"  
pillar = 5ft
- Material
  - Structural steel, cast-in-place concrete structure, limestone, red fire brick with Austin common brick accent

# Conclusion

---

- Questions?
- Recommendations?
- Next Steps
- Thank you!