



Presentation Overview

- Flood Response Coordination
 - Before, During, and After the storm
- Flood Mitigation Coordination
- Flood Mitigation Funding Coordination



Before the Storm

- Outreach: COA, NWS, USGS, LCRA, TFMA, Public Safety
- National Weather Service
- Lower Colorado River Authority
- Local media meteorologists
- Austin/Travis County partners
- Texas Division of Emergency Management



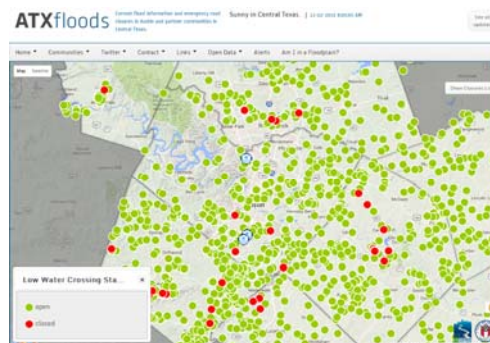
During the Storm

- National Weather Service
 - NWS Chat; Video and Phone
- Austin Homeland Security and Emergency Management
 - Public Safety agencies, Public Works, Austin Energy
 - CAPCOG area counties and cities
- Lower Colorado River Authority
 - Floodgate Operations Notification Service (FONS)

5

During the Storm

- Rain and stream level gauges
 - Austin, USGS, LCRA, UBCWCID
- Closing Austin roads due to flooding
 - WPD, PWD, APD, AFD
- Evacuations
 - HSEM; Public Safety agencies



6

After the Storm

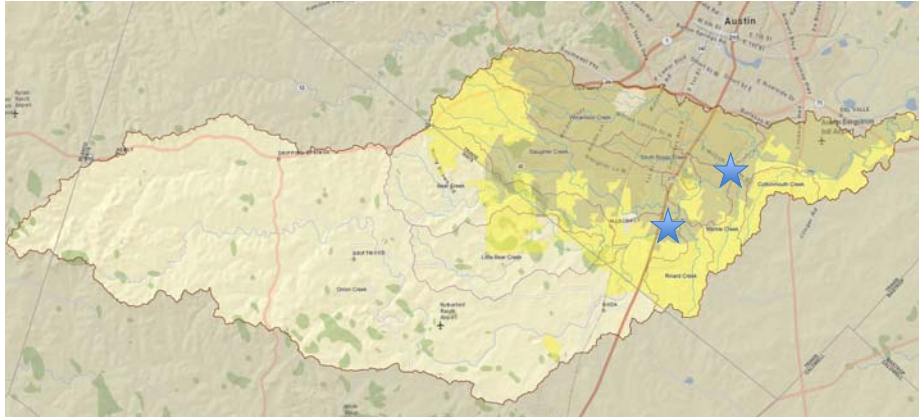
- Austin Homeland Security and Emergency Management
 - Austin agencies: WPD, AWU, AE, ORES, APD, AFD, EMS, HHSD, ASO, PARD, FS, ARR, NHCD
 - Travis County: EM, TNR, TCSO
 - American Red Cross
 - Volunteer Organizations: CERT, VOAD,
- Texas DEM and TWDB
- FEMA

7



Necessity of Coordination...an example

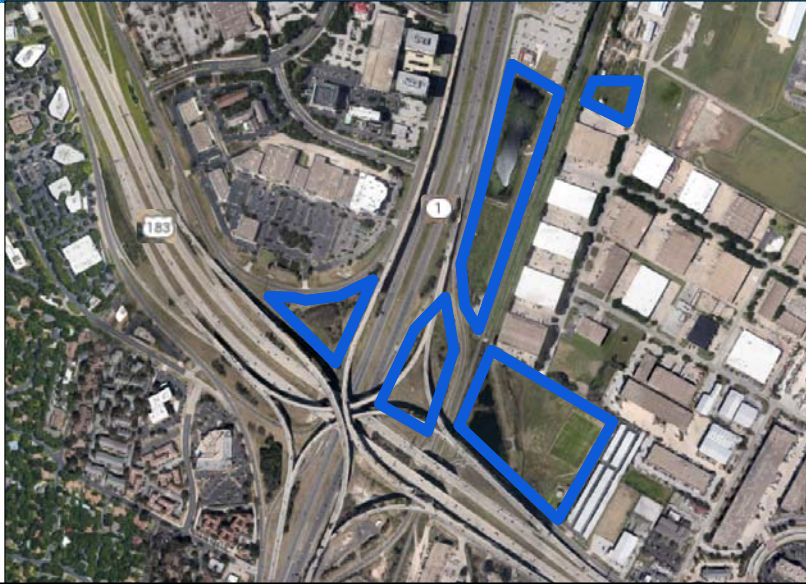
Onion Creek drainage area: 345 square miles
61% is outside the City's jurisdiction



Onion Creek Flood Mitigation

- Onion Creek Feasibility Study (1999-2006)
 - United States Army Corps of Engineers
 - City of Austin
 - Travis County
 - Lower Colorado River Authority
 - City of Sunset Valley

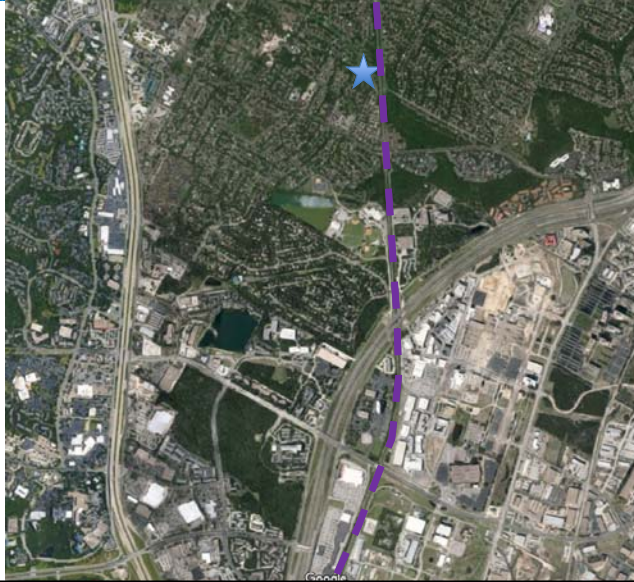
Shoal Creek Regional Detention



Shoal Creek Regional Detention

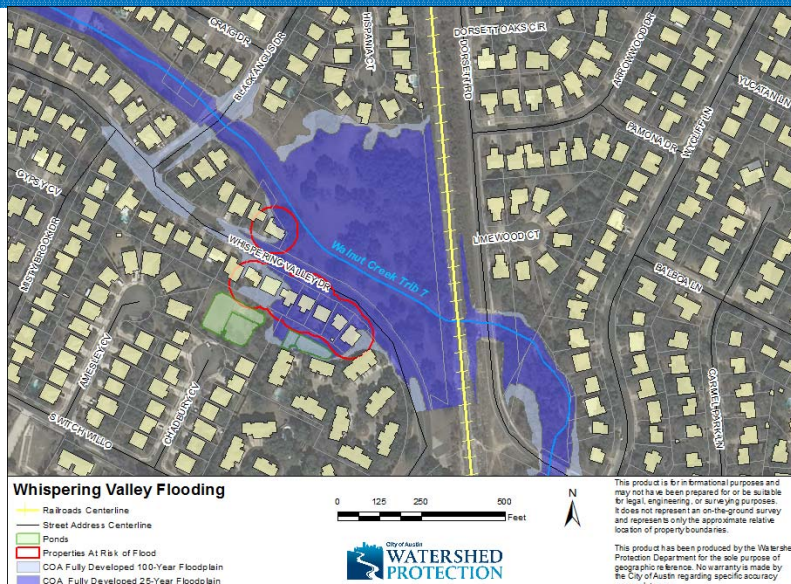
- Austin built ponds after 1981 Memorial Day flood
- Upgraded ponds for more flood mitigation benefits in 1999
- Partnered with:
 - Private developers (Zales-Krueger and Arbor Walk)
 - TxDOT
 - University of Texas at Austin

Whispering Valley (Walnut Creek)



13

Whispering Valley (Walnut Creek)



14

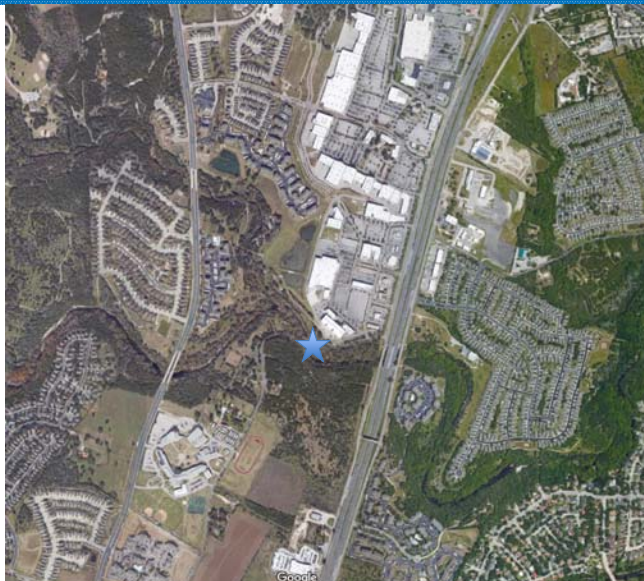
Whispering Valley (Walnut Creek)

- 8 homes flooding on a tributary of Walnut Creek
- Undersized, aging railroad infrastructure
- WPD coordinating with UPRR
- Potential cost-sharing
- Leadership and facilitation from District 6 Council Member



15

Old San Antonio Road (Slaughter Creek)



16

Old San Antonio Road (Slaughter Creek)



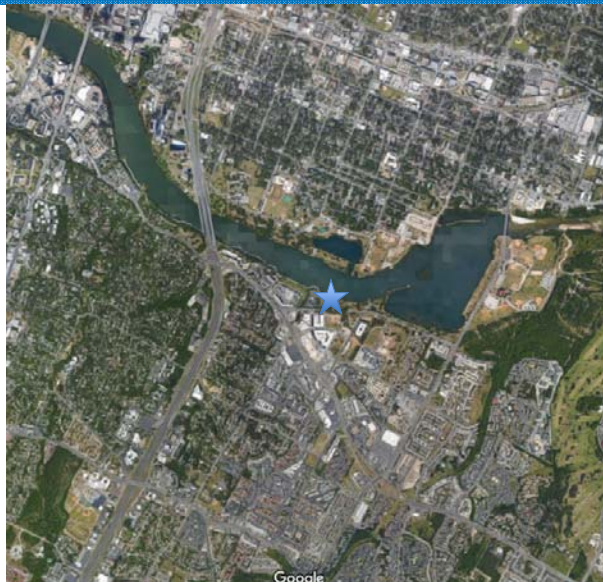
17

Old San Antonio Road (Slaughter Creek)

- Low-water crossing
- WPD feasibility design for new bridge
 - Coordination: PARD
- WPD considering closing road
 - Coordination: AFD, PARD, APD, EMS, ATD, PWD, AISD, TxDOT, private developers

18

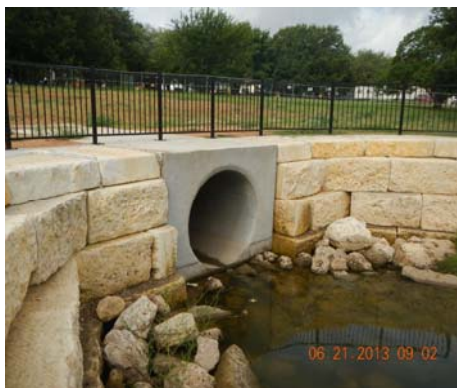
South Shore PUD (Lady Bird Lake)



19

South Shore PUD (Lady Bird Lake)

- Storm Drain Improvement (SDI) project
- Partnered with:
 - Private Developer
 - WPD
 - PARD
 - AWU



20



Sources of Funding

- Drainage Utility Fund
- General Obligation Bonds
- Certificates of Obligation
- Matching Grants from FEMA, USACE
- Partnerships
- Alternate financing

Contact Information

Kevin Shunk

Floodplain Office/Flood Warning

(512) 974-9176

kevin.shunk@austintexas.gov

Jorge Morales

Local Flood Hazard Mitigation

(512) 974-3345

jorge.morales@austintexas.gov

Reem Zoun

Creek Flood Hazard Mitigation

(512) 974-3354

reem.zoun@austintexas.gov

Flood Mitigation Task Force:

<https://www.austintexas.gov/fmtf> Main Webpage

<https://floodmitigationtaskforce.bloomfire.com/> Additional Resources Webpage

23