

University of Texas
Center for Transportation Research

Interlocal Agreement

Urban Transportation Commission

January 12, 2016

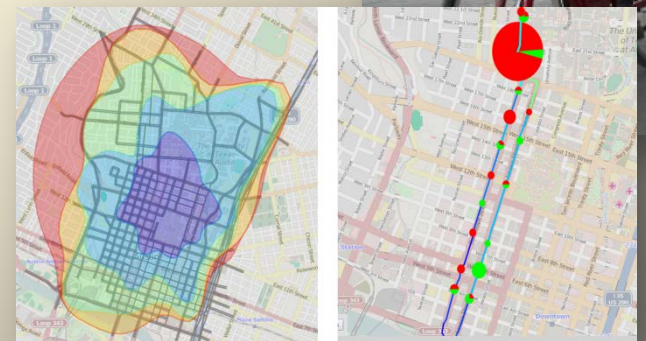
UT Center for Transportation Research (CTR)

- One of the leading university-based transportation research centers in the world.
- Local resource - Located at The University of Texas at Austin.
- CTR is part of the Tier 1 University of Texas Transportation Center for Data-Supported Transportation Operations and Planning (D-STOP), which was awarded to UT by the U.S. DOT.
- CTR currently contracts with:
 - TxDOT
 - National Science Foundation
 - US Dept. of Transportation
 - Transportation Safety Board
 - Federal Highway Administration
 - Federal Rail Administration
 - Department of Homeland Security
 - CAMPO
 - North Central Texas Council of Governments



CTR Interlocal Agreement

- Agreement Duration: 5 years
- Requested Authorization: \$500,000/year
- Council Approved FY15-16 Budget: \$250,000
- Provide access to multidisciplinary expertise:
 - Center for Transportation Research
 - Texas Advanced Computing Center
 - Electrical and Computer Engineering Departments
 - School of Architecture
 - Department of Communication Studies
 - Wireless Networking and Communications Group



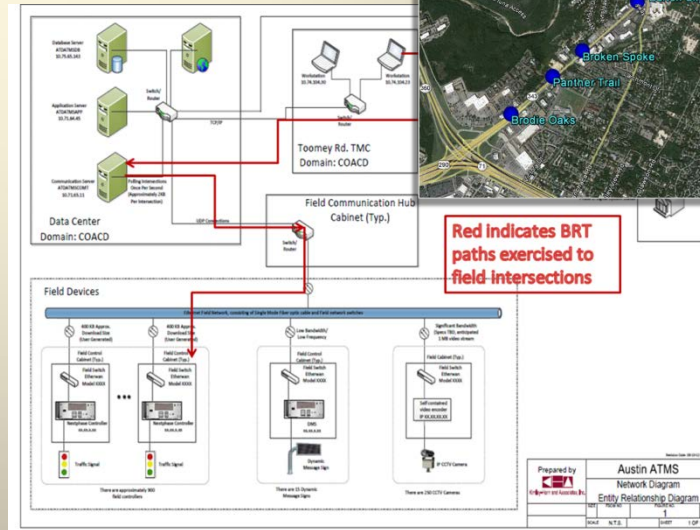
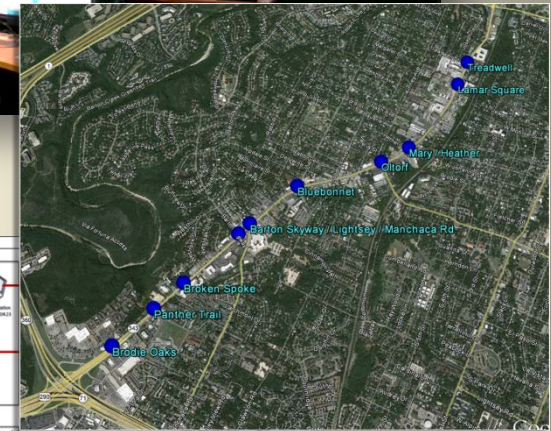
CTR Interlocal Agreement

Initial Projects

- TMC Performance Metrics
- Data Warehouse
- Analyze Adaptive Signal Control Performance

Future Projects

- Methodology for ranking CIP Projects for mobility & safety
- Transportation Demand Management data analysis
- White papers, policy research, peer-city reviews, etc.
 - Sidewalk riding policy research
 - Best practice for transit priority



CTR Interlocal Agreement

Mutually beneficial agreement:

Benefits to the city:

- Access to varied expertise & experience
- Exposure to latest best practices and strategies from emerging research
- Extension of staff

Benefits to CTR:

- Provides students/researchers real-world data for research
- Exposure to urban transportation challenges and opportunities
- Immersed in post-university work environment

Upcoming Schedule:

1/12/16	UTC
2/3/16	Mobility Committee
2/25/16	City Council



Questions?

