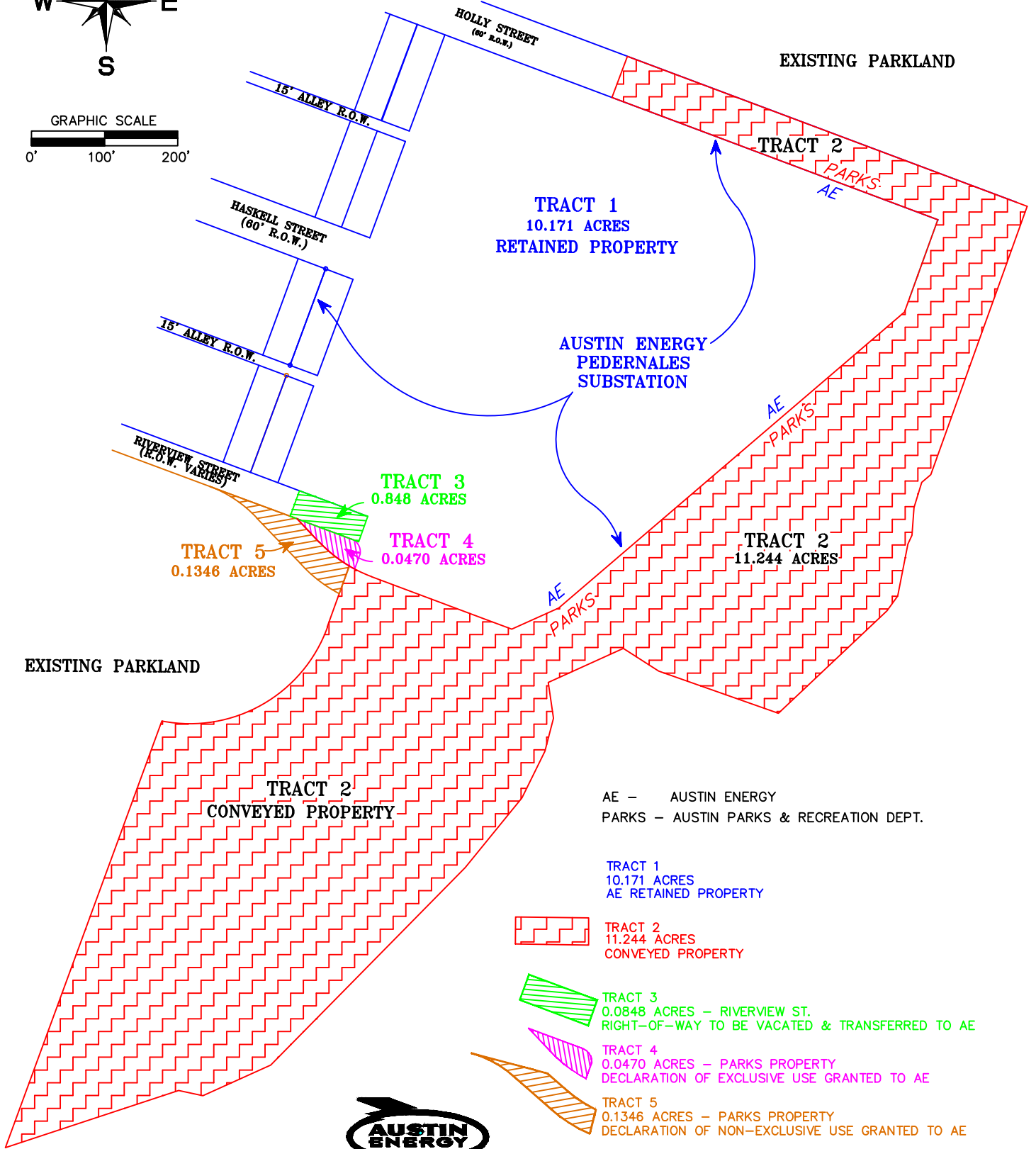
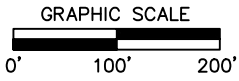
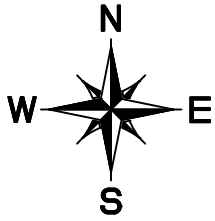


PROPERTY BOUNDARIES HOLLY POWER PLANT/ PARKS LAND



EXISTING PARKLAND

TRACT 2
PARKS
AE

TRACT 1
10.171 ACRES
RETAINED PROPERTY

AUSTIN ENERGY
PEDERNALES
SUBSTATION

TRACT 3
0.848 ACRES

TRACT 4
0.0470 ACRES

TRACT 5
0.1346 ACRES

TRACT 2
11.244 ACRES

EXISTING PARKLAND

TRACT 2
CONVEYED PROPERTY

AE - AUSTIN ENERGY
PARKS - AUSTIN PARKS & RECREATION DEPT.

TRACT 1
10.171 ACRES
AE RETAINED PROPERTY

TRACT 2
11.244 ACRES
CONVEYED PROPERTY

TRACT 3
0.0848 ACRES - RIVERVIEW ST.
RIGHT-OF-WAY TO BE VACATED & TRANSFERRED TO AE

TRACT 4
0.0470 ACRES - PARKS PROPERTY
DECLARATION OF EXCLUSIVE USE GRANTED TO AE

TRACT 5
0.1346 ACRES - PARKS PROPERTY
DECLARATION OF NON-EXCLUSIVE USE GRANTED TO AE

