

A vibrant sunset scene with a bridge and water. The sky is a deep orange and red, with the sun low on the horizon. A bridge with a railing is silhouetted against the sky, with several people walking on it. The water in the foreground is dark, with the sun's reflection visible. The overall mood is peaceful and scenic.

# Families with Children in Austin: A Demographic Snapshot

City of Austin City Council Work Session

January 26, 2016

Ryan Robinson  
City Demographer  
Planning & Zoning Department



# Families with Children in Austin: A Demographic Snapshot

City of Austin City Council Work Session

January 26, 2016

Ryan Robinson

City Demographer

Planning & Zoning Department

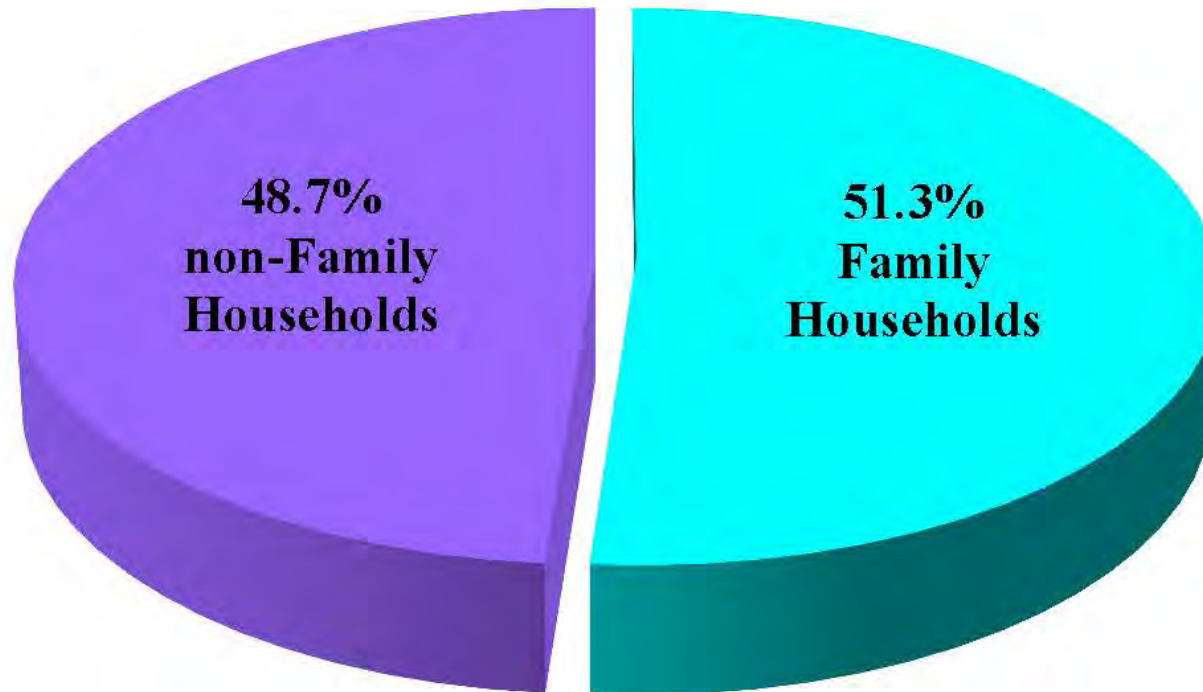


# Structural Descriptions and Trends

Families with Children in Austin: a Demographic Snapshot

Ryan Robinson  
City Demographer  
City of Austin

## Households by Type: City of Austin, 2014 data

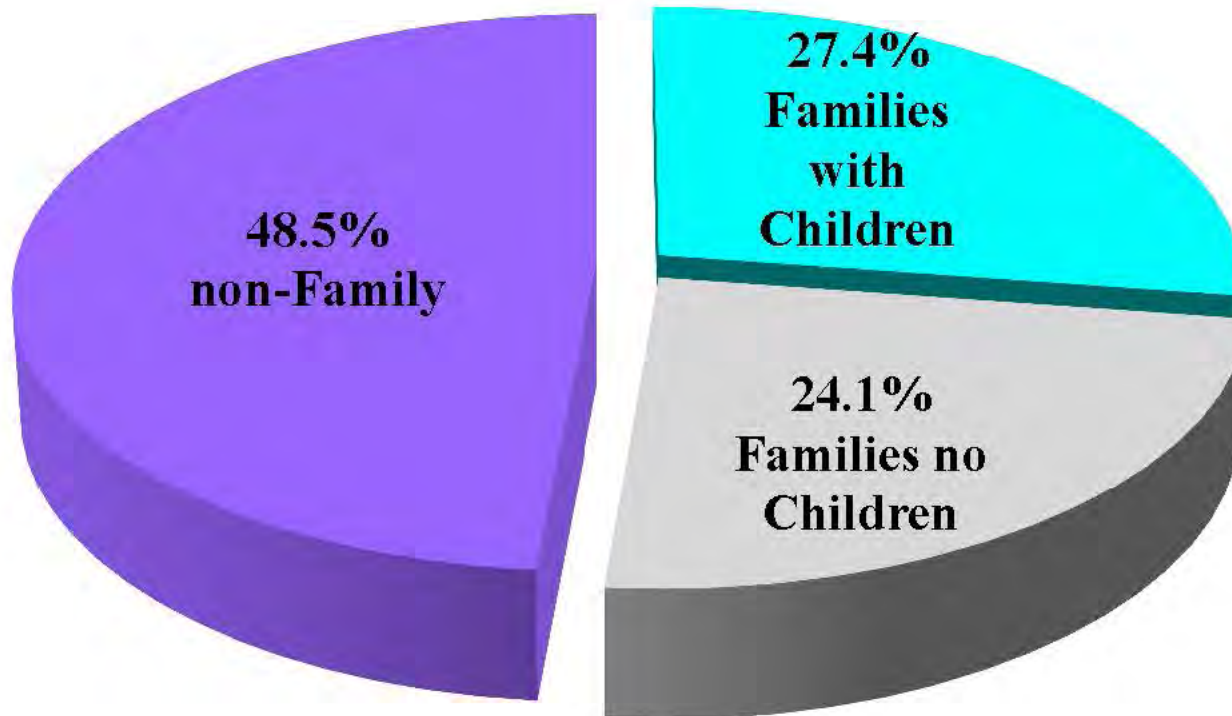


Data Source: US Census Bureau;  
American Community Survey, 2014  
1-year data series; Table B11001.

**Households = 362,000**



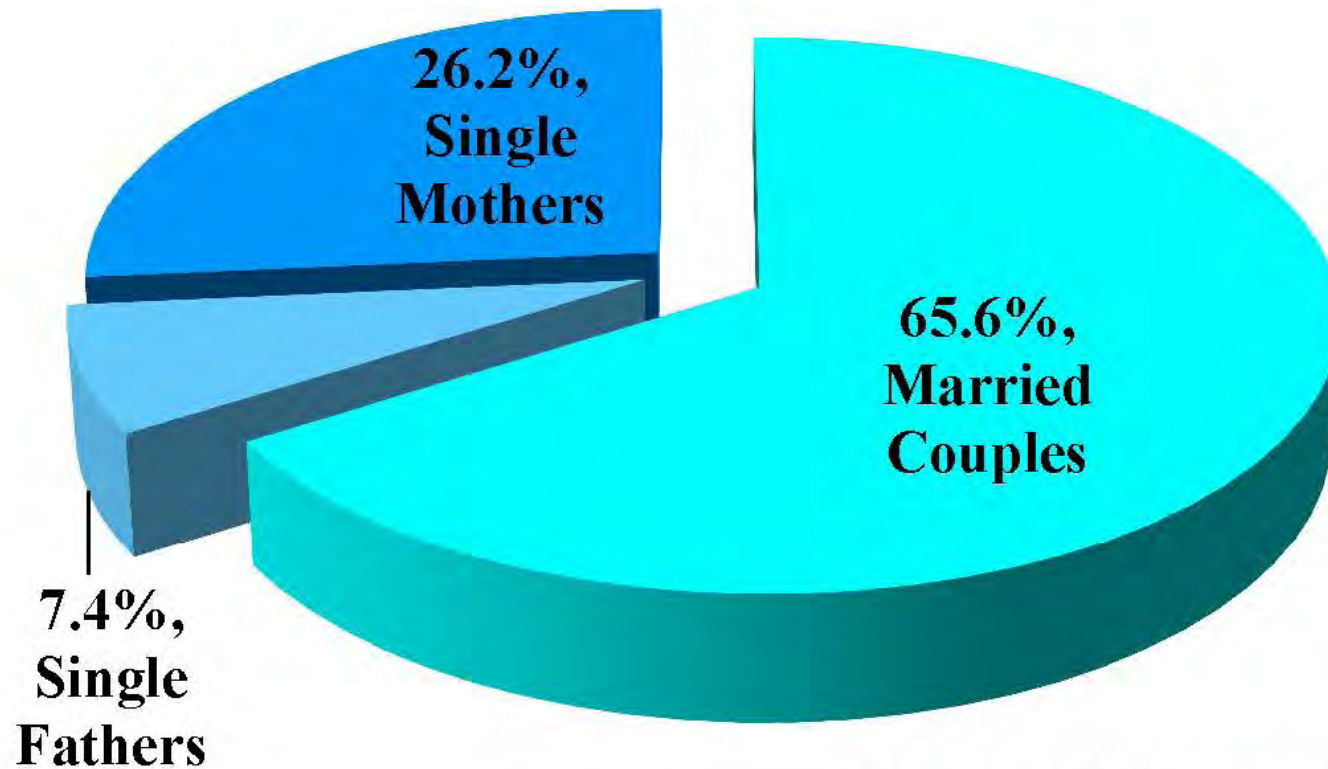
## Households by Type: City of Austin, 2014 data



**Data Source:** US Census Bureau;  
American Community Survey, 2014  
1-year data series; Table B11001.

**Households = 362,000**

## Households with Children by Type: City of Austin, 2014 data



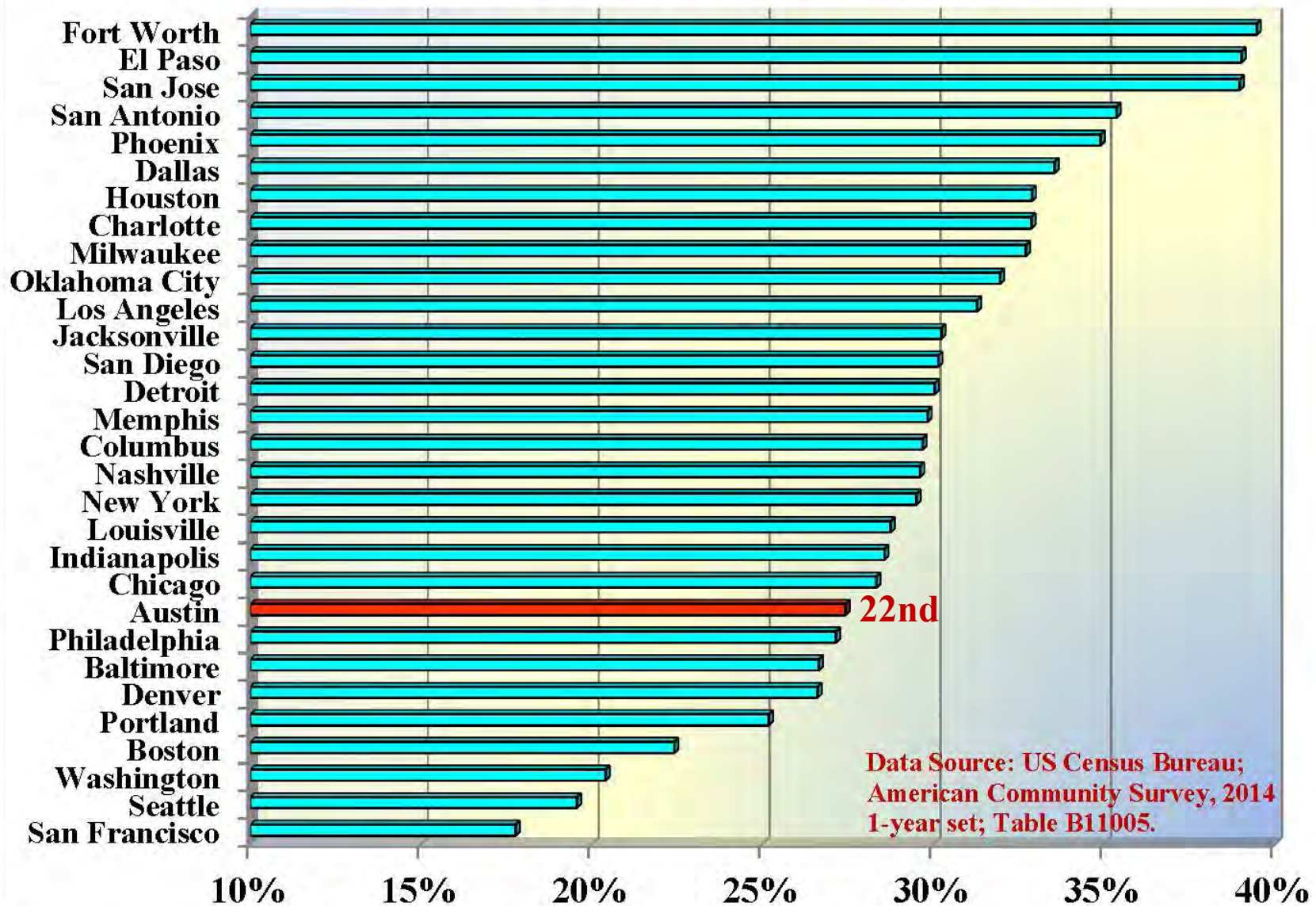
**Households = 98,975**

**Children = 200,050**

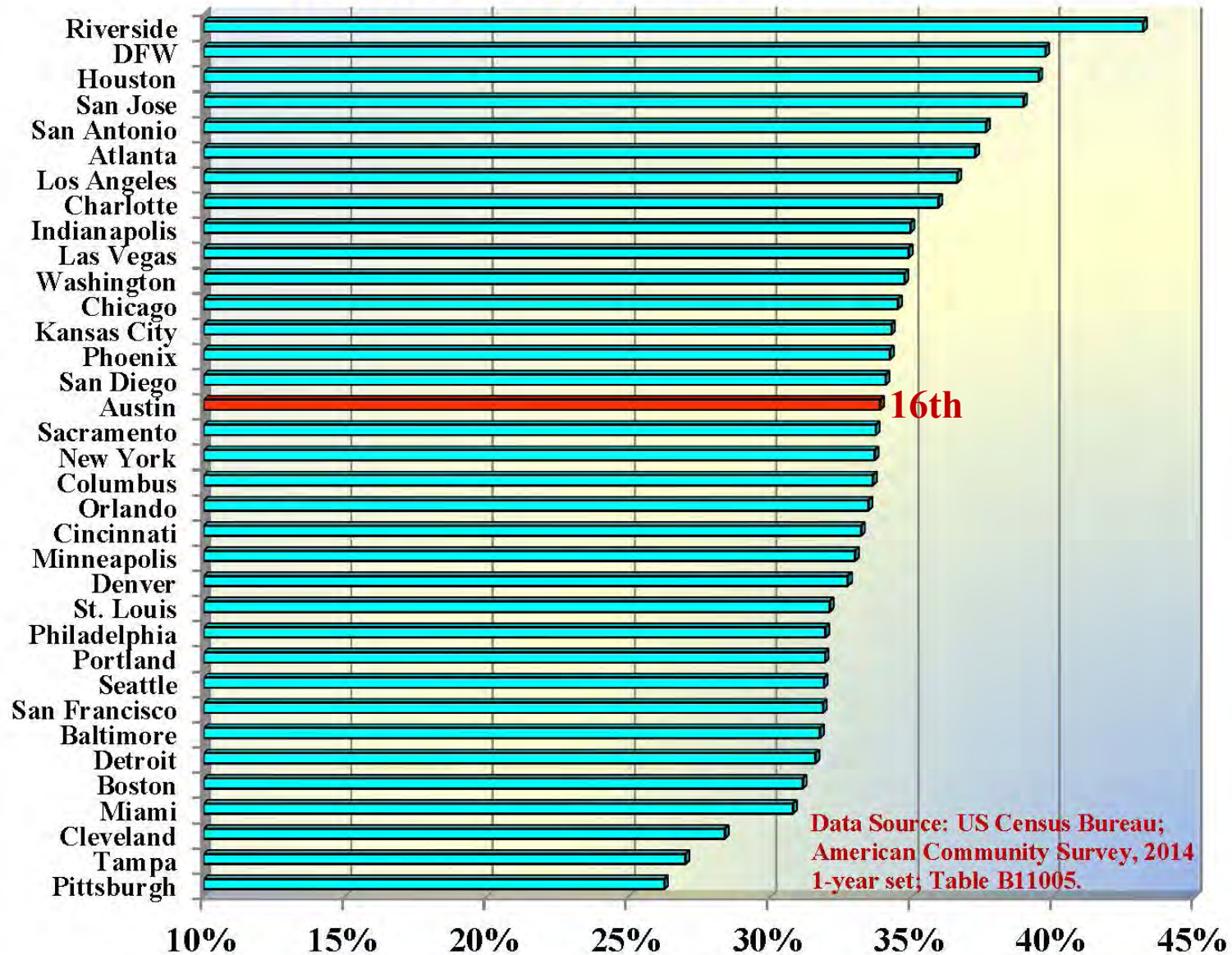
**Data Source:** US Census Bureau;  
American Community Survey, 2014  
1-year data series; Table B11005.



## Households with Children, Percentage of Total Households, Top 30 US Cities, 2014

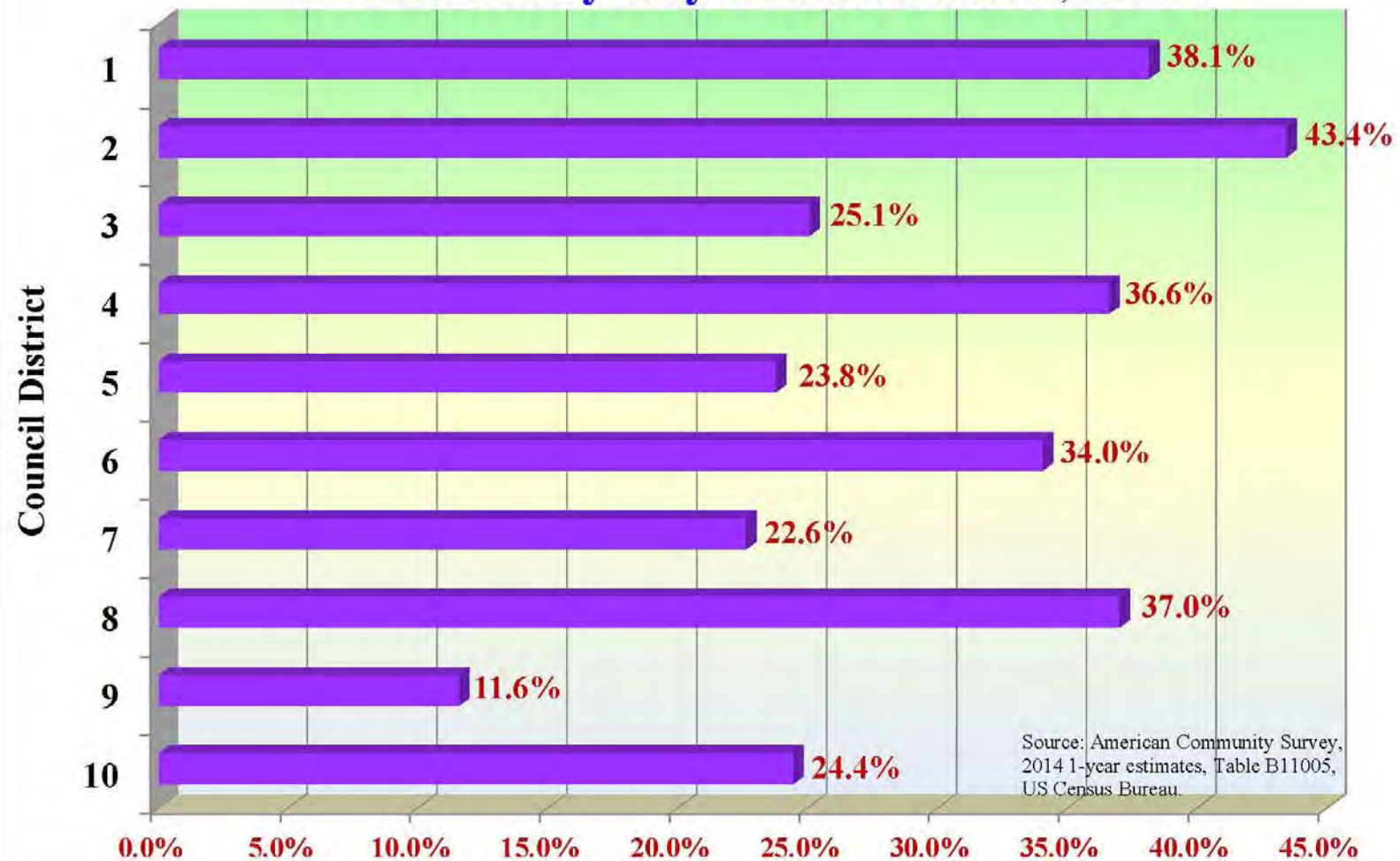


## Households with Children, Percentage of Total Households, Top 35 US Metros, 2014

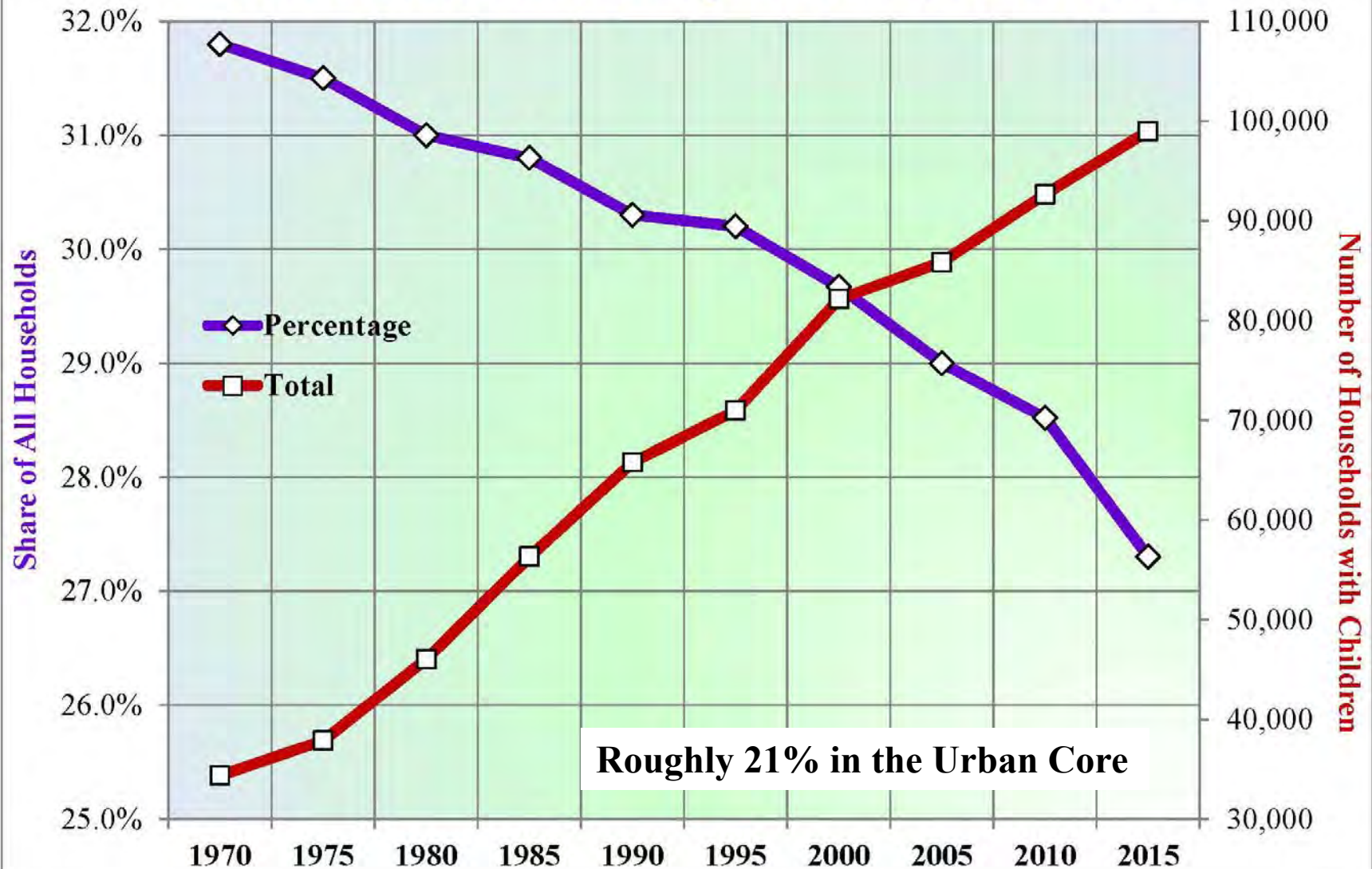




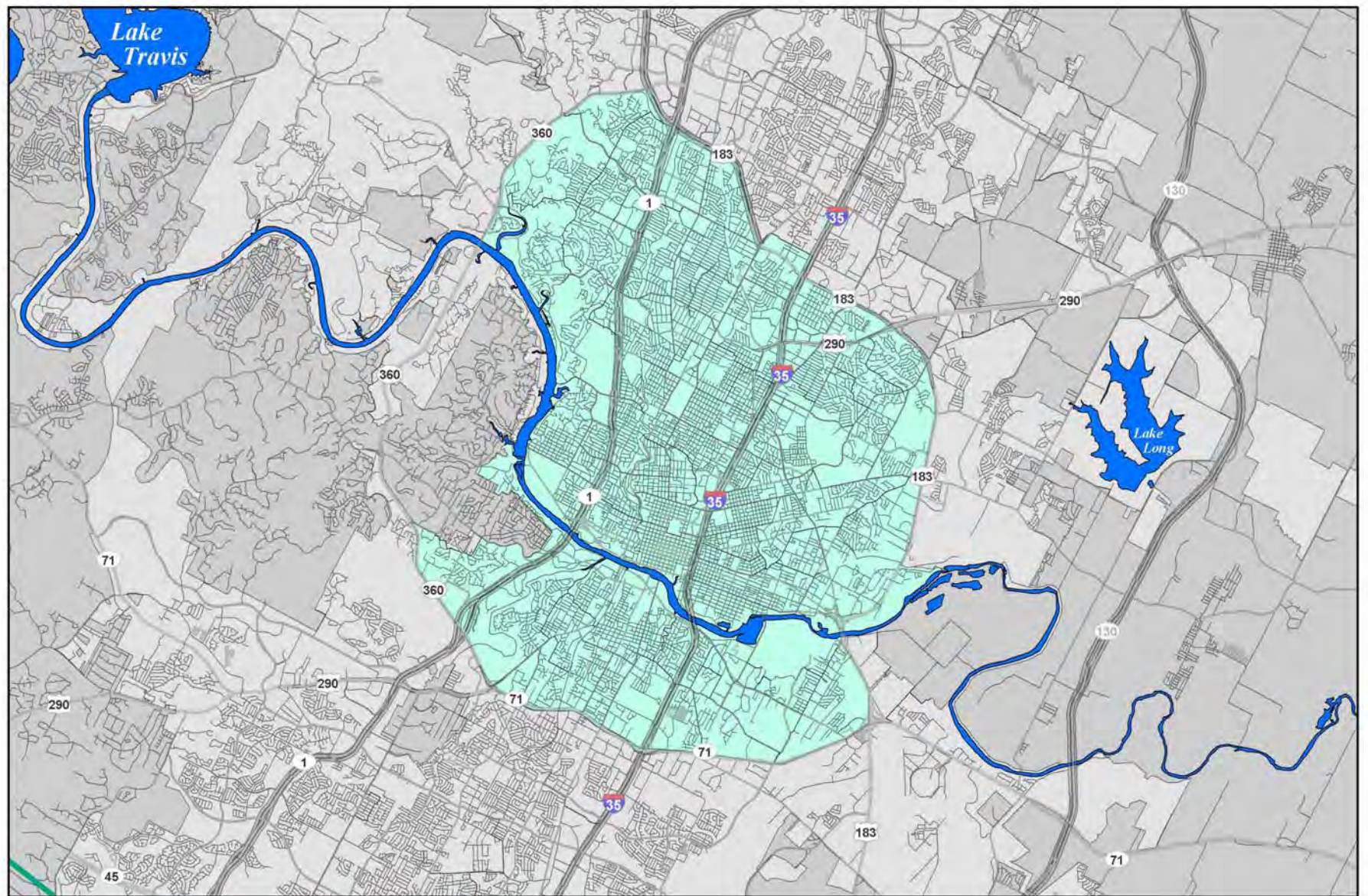
## Households with Children as a Share of Total Households by City Council District, 2014



## Percentage Drops while Total Climbs: Households with Children in the City of Austin, 1970 to 2015



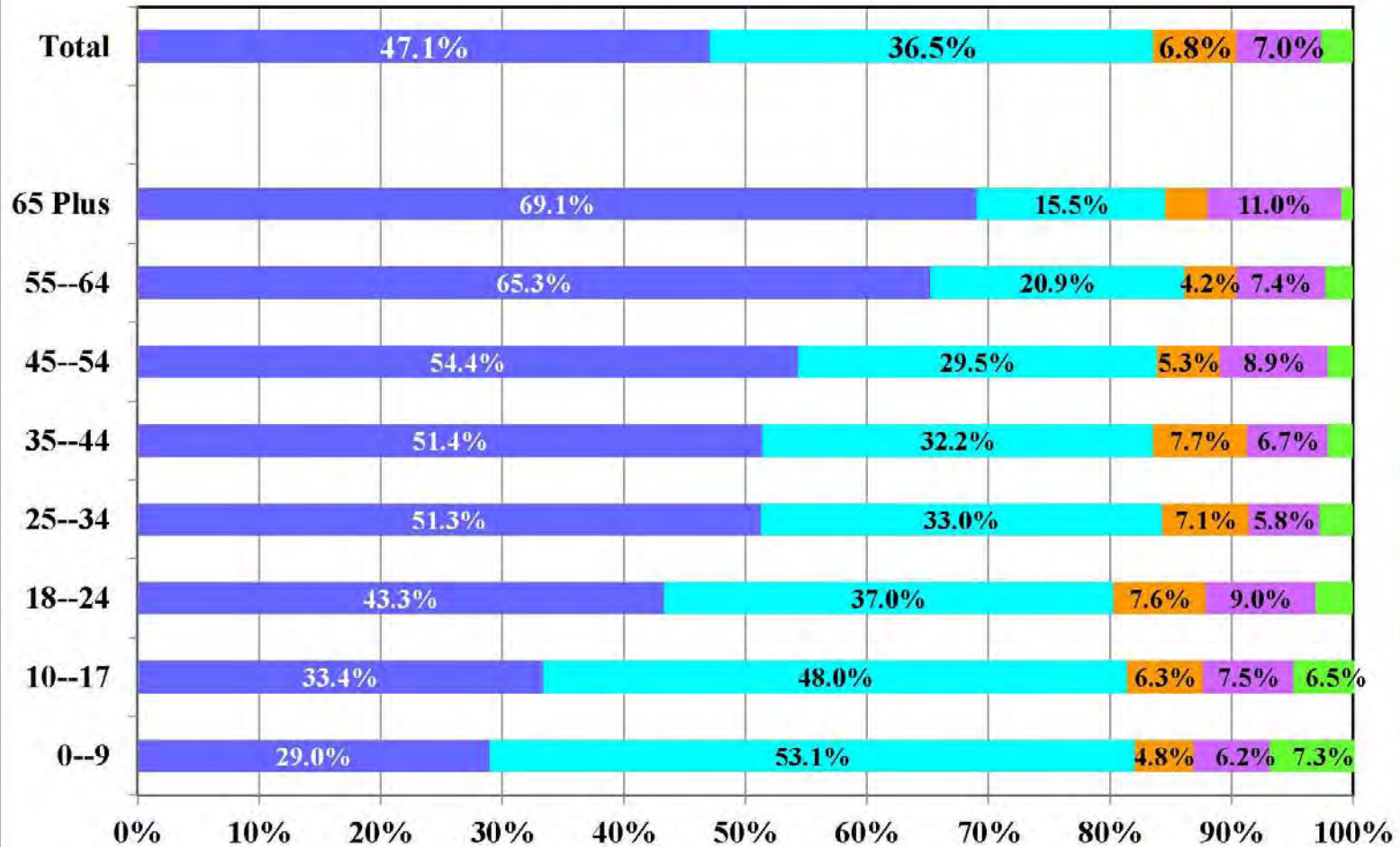




# Austin's Urban Core



## Age Structure by Race and Ethnicity, City of Austin, 2014 Estimates



Data are estimates from  
The City Demographer  
based on Census info.

■ White
 ■ Hispanic
 ■ Asian
 ■ African American
 ■ Multi/Other

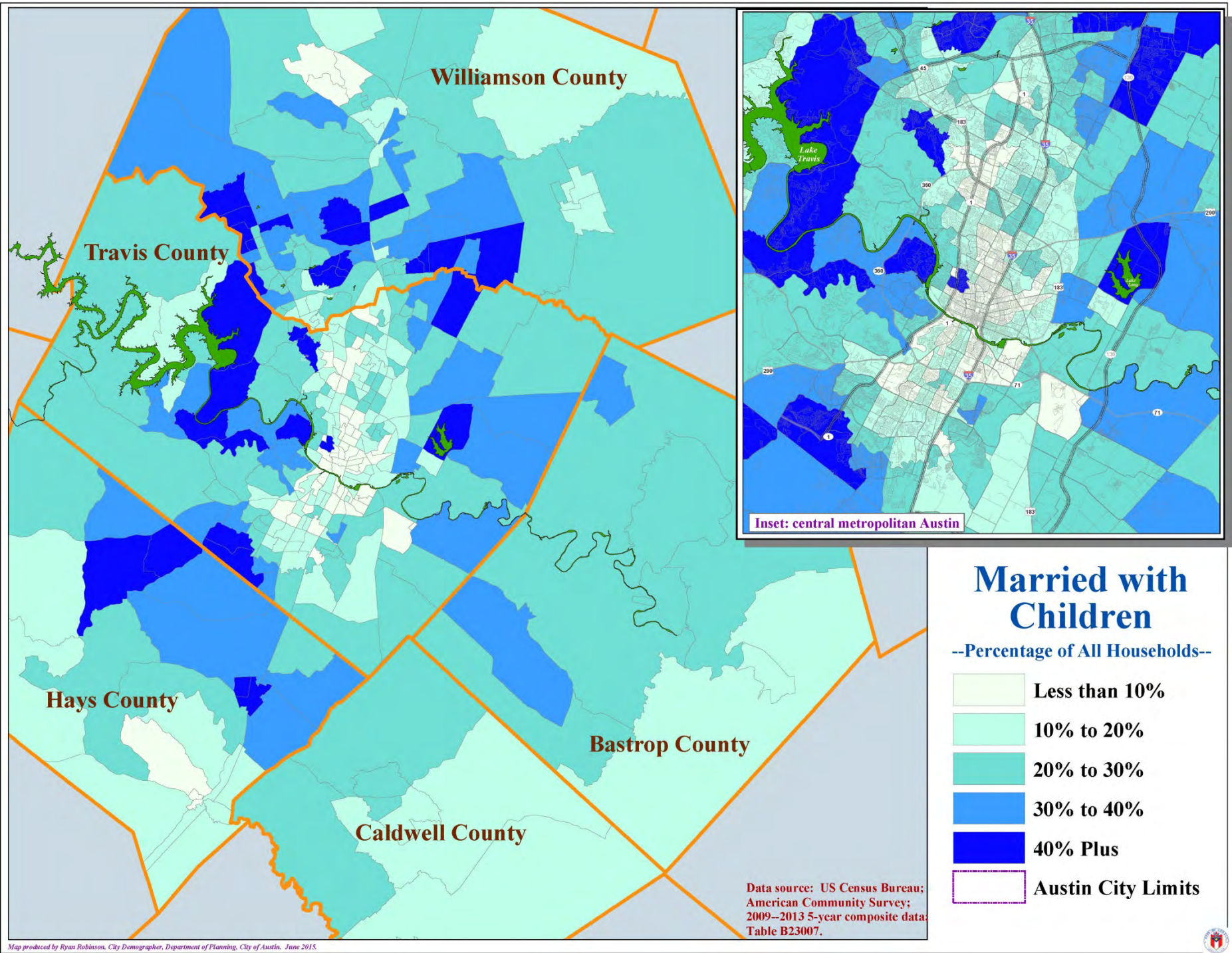


A background image showing a city skyline with several tall buildings, including the Austin skyline. In the foreground, a group of people are walking and jogging on a paved path. A person is riding a bicycle on the left. The scene is set in a park-like area with trees and a body of water in the background.

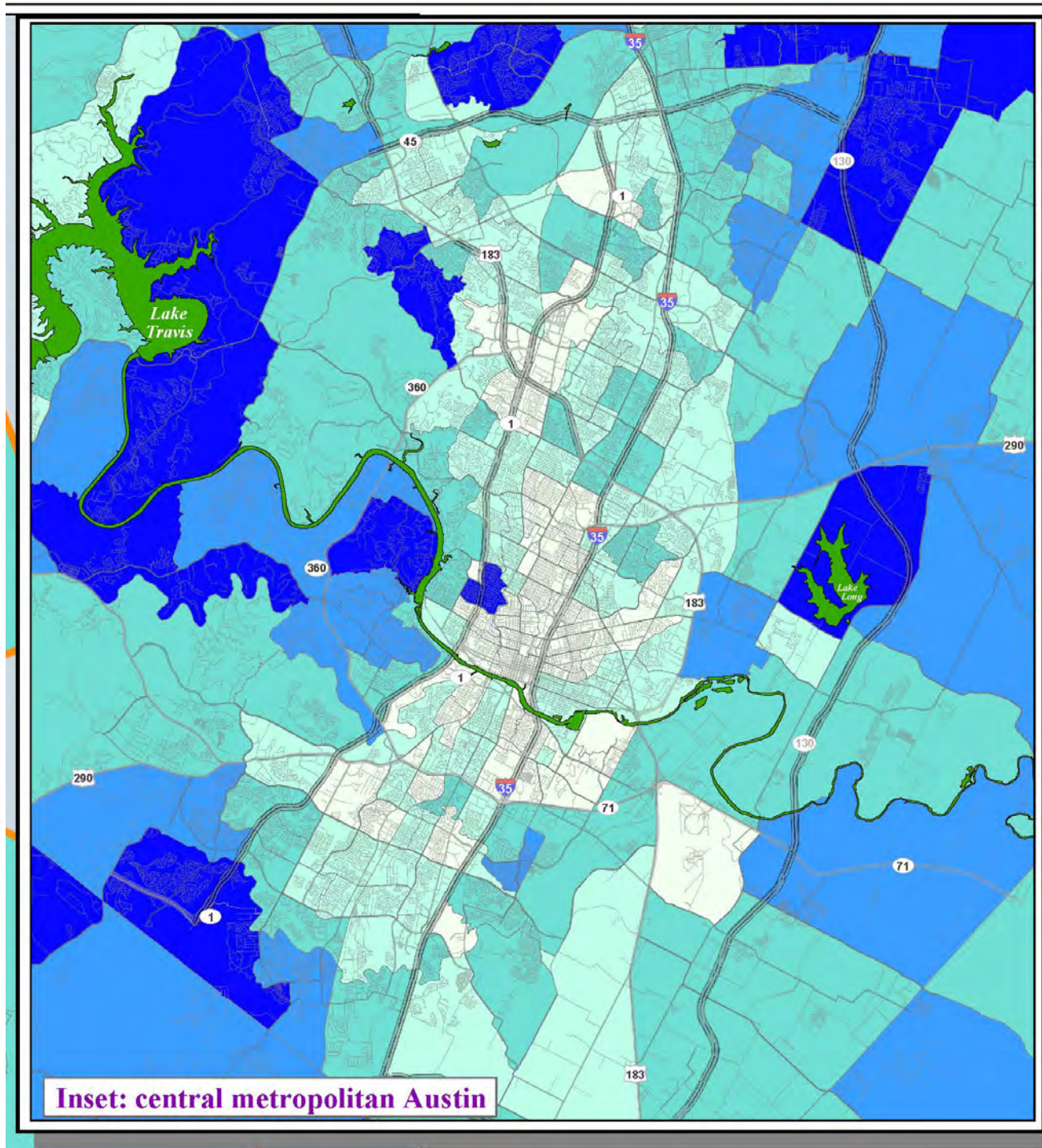
# Spatial Descriptions

Families with Children in Austin: a Demographic Snapshot

Ryan Robinson  
City Demographer  
City of Austin

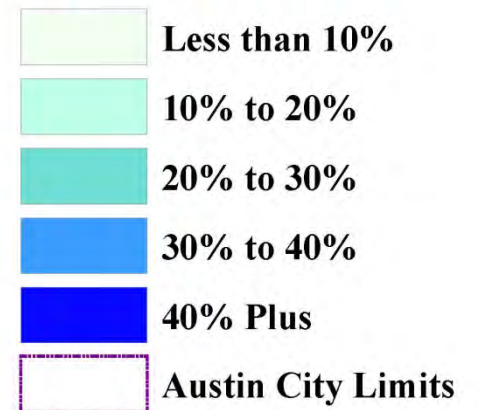




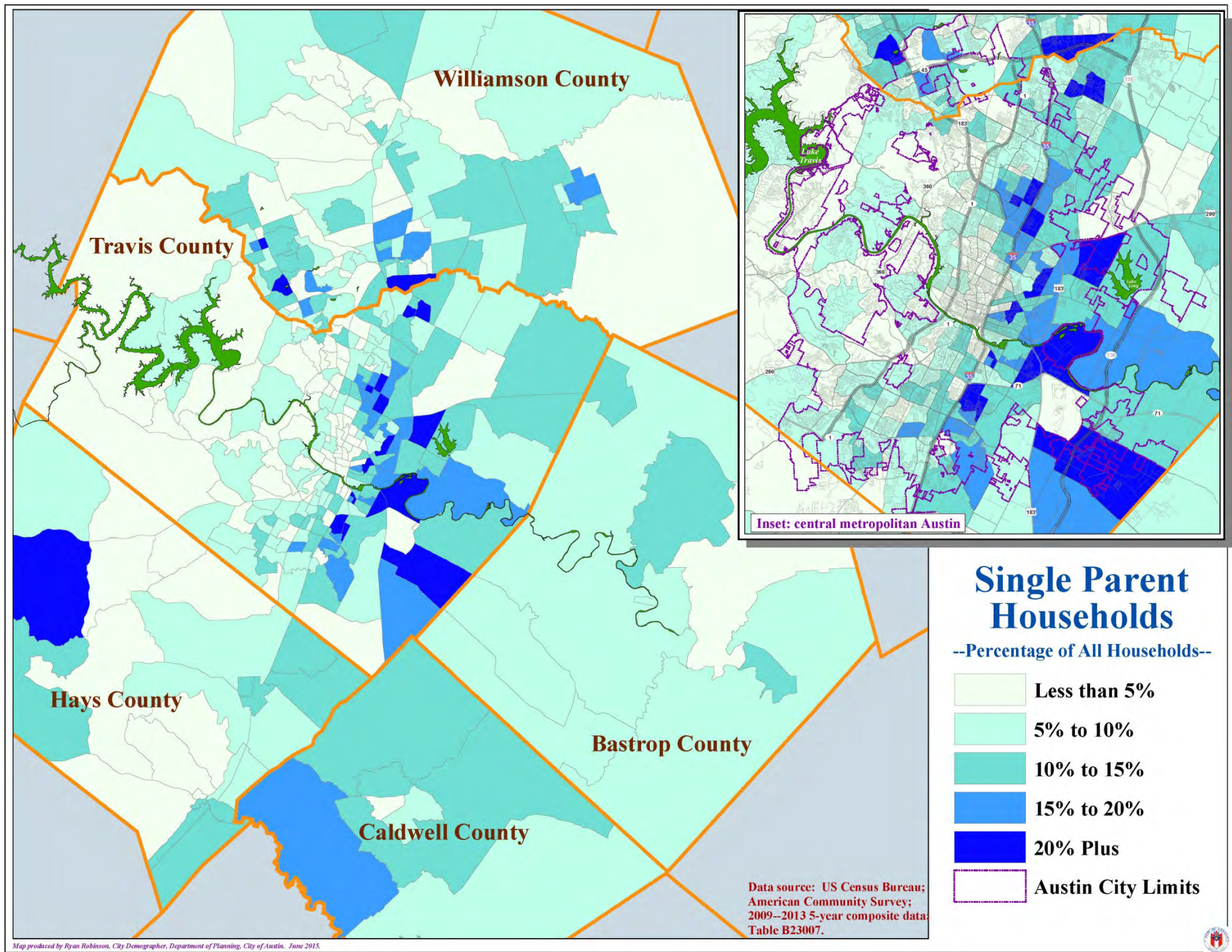


## Married with Children

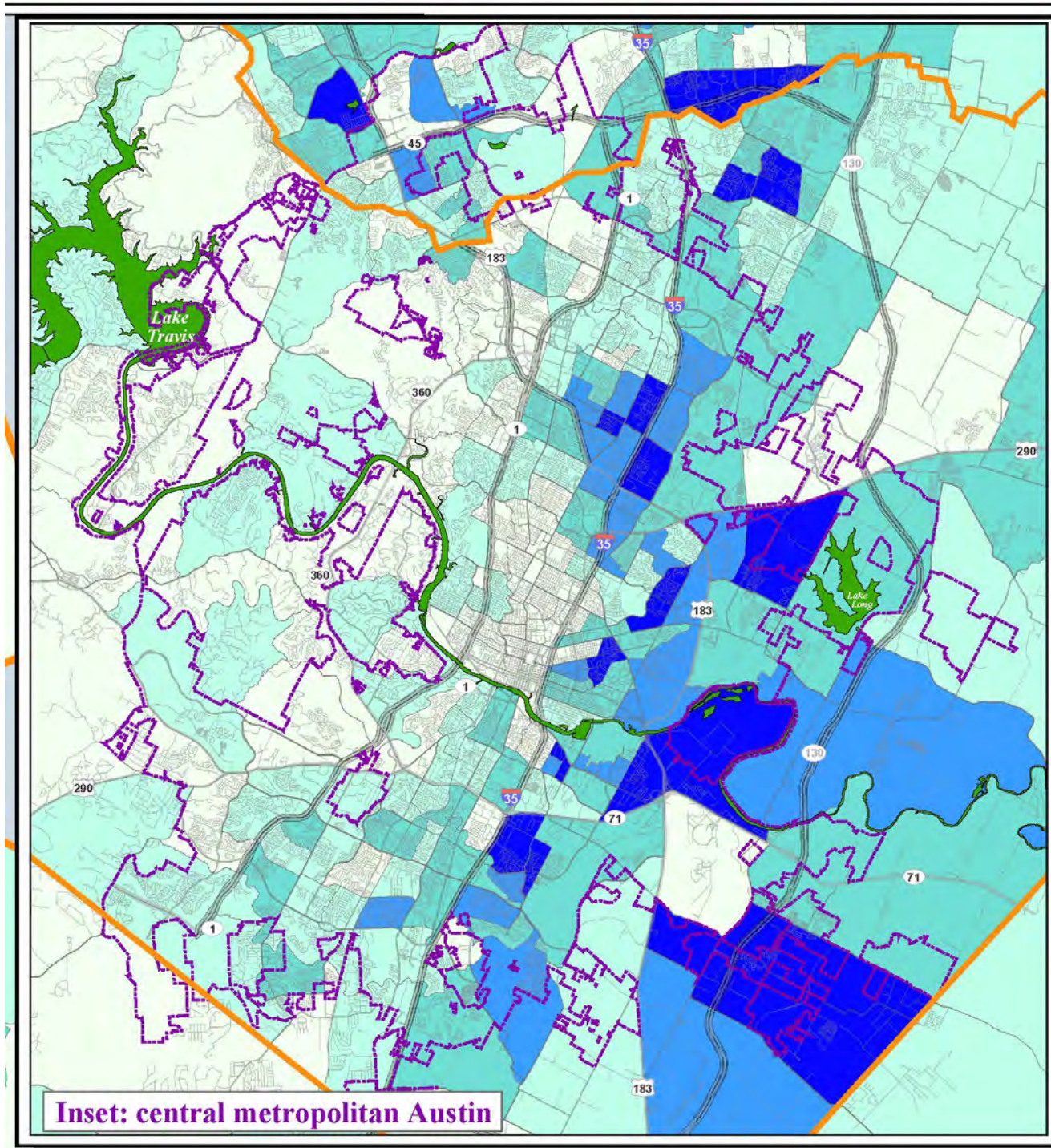
--Percentage of All Households--





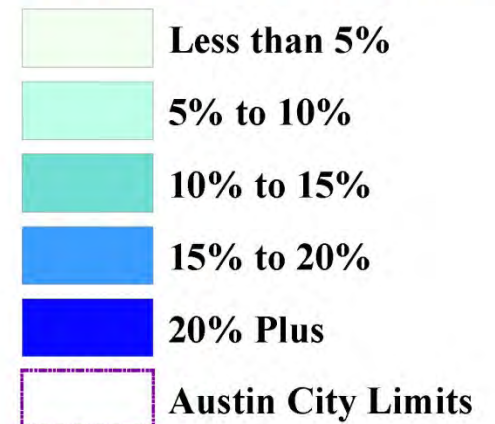






## Single Parent Households

--Percentage of All Households--

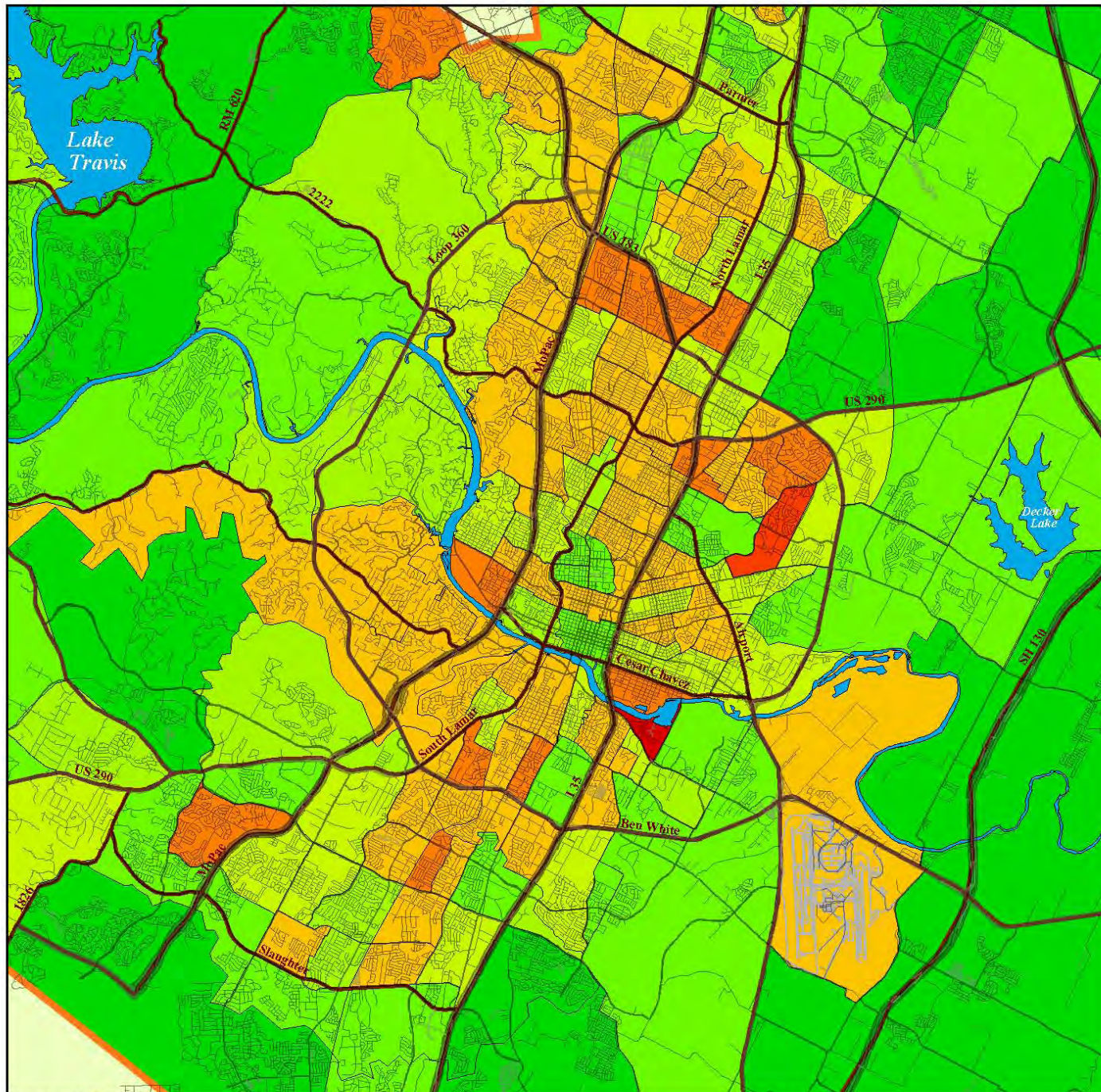
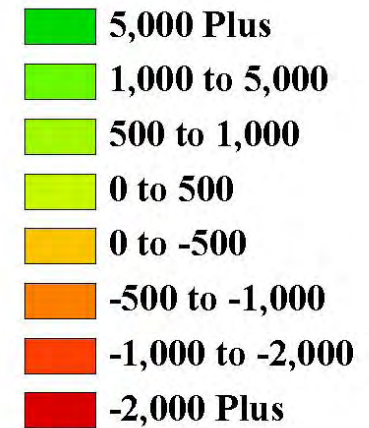




# Population Growth and Decline: 2000 to 2010

**Travis County**  
Decennial data from  
the US Census Bureau

Change in a Census  
Tract's Total Population  
from 2000 to 2010  
at the 2000 tract-level



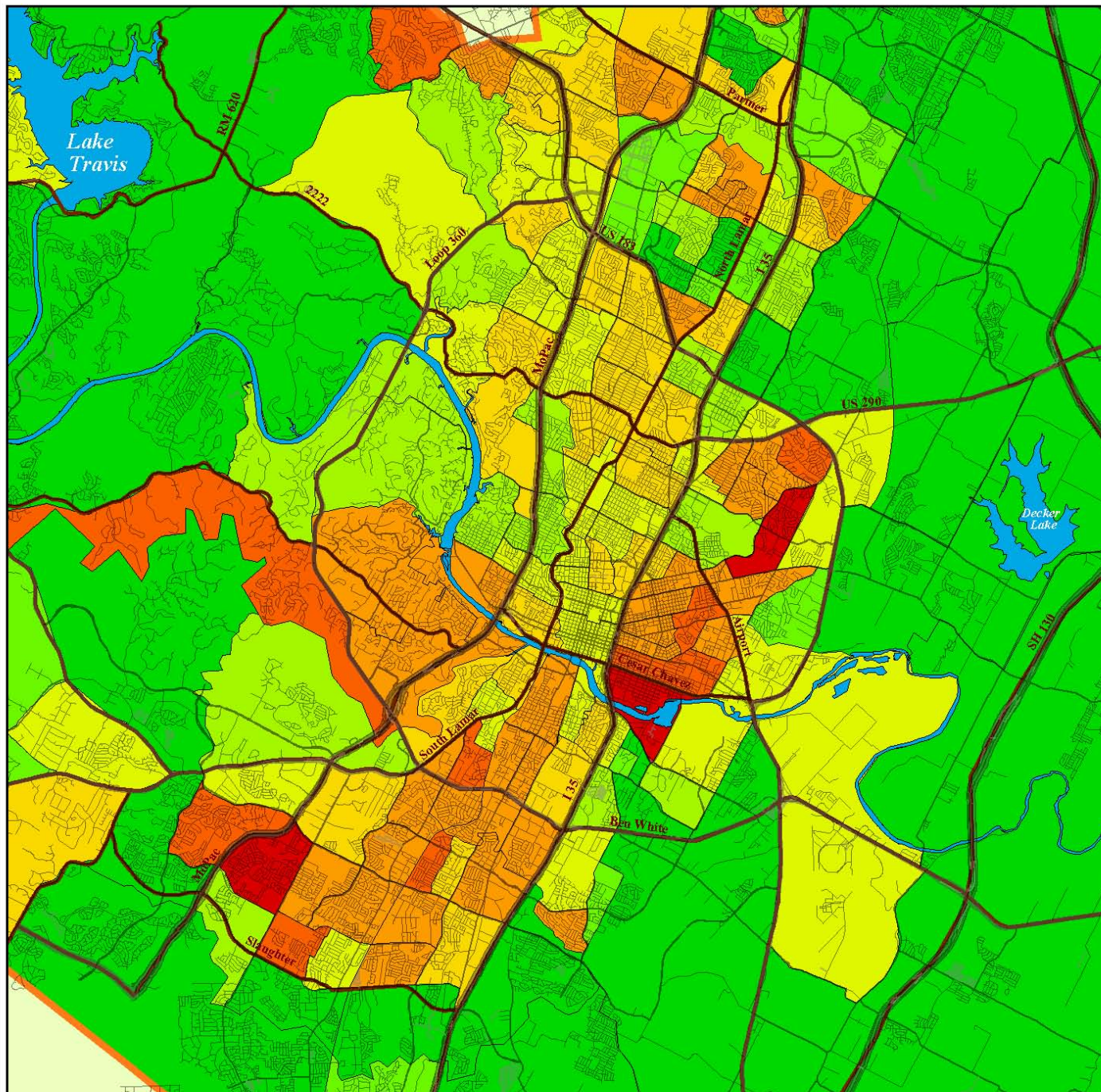
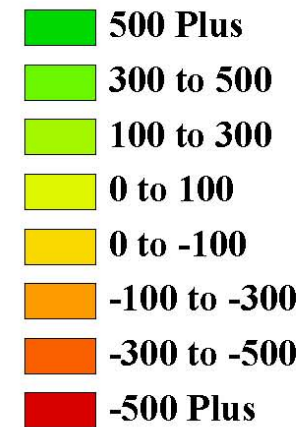


# Under Age 18 Population Growth and Decline: 2000 to 2010

**Travis County**

Decennial data from  
the US Census Bureau

Change in a Census  
Tract's Total Population  
Age Under 18  
from 2000 to 2010  
at the 2000 tract-level

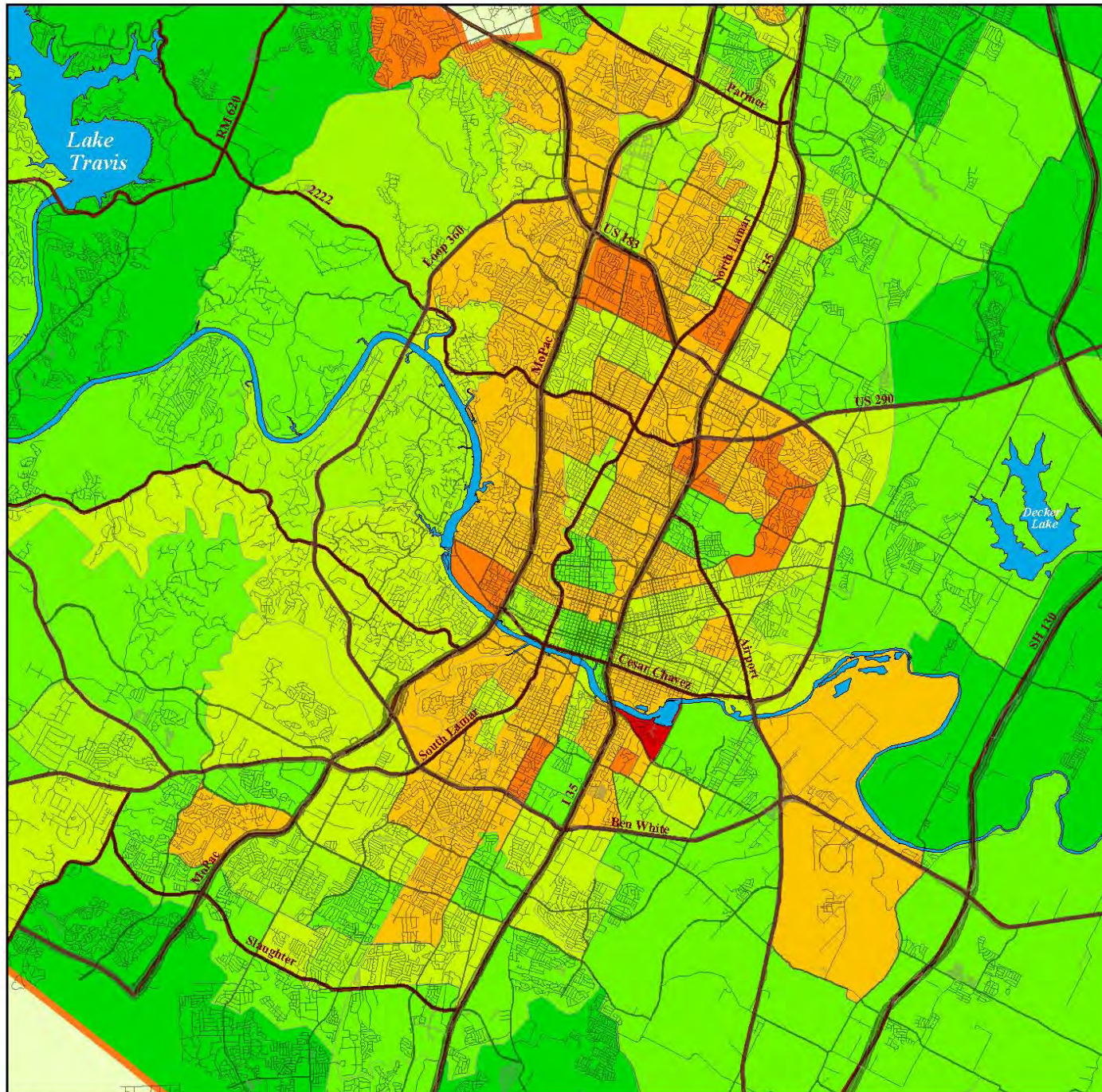
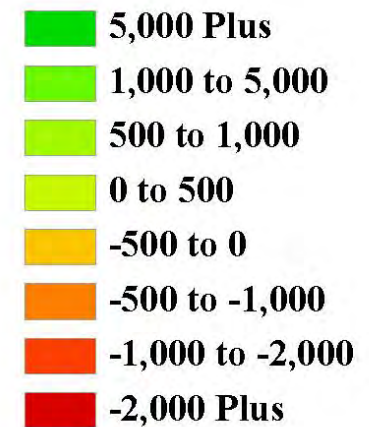




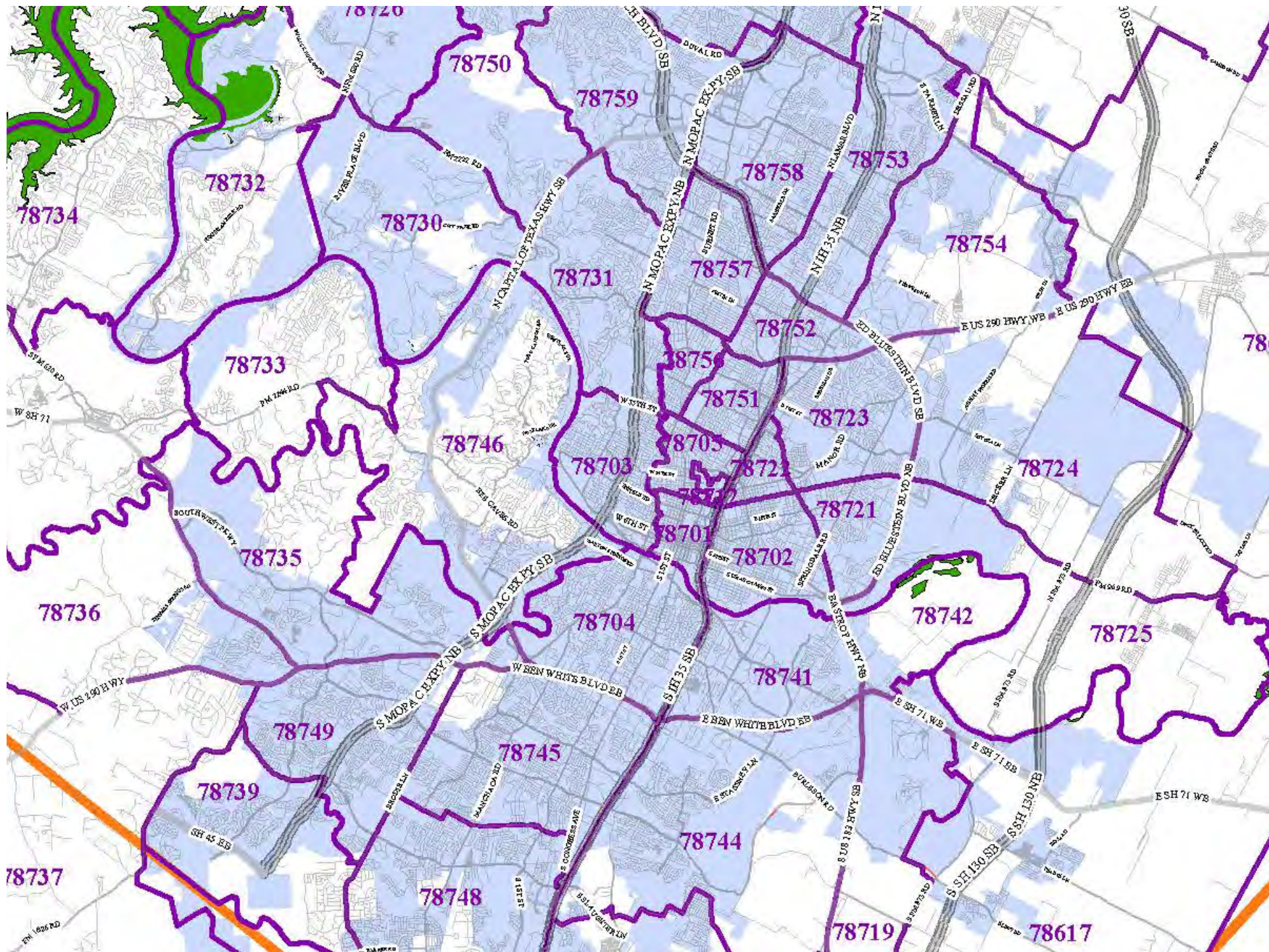
# Age 18 Plus Population Growth and Decline: 2000 to 2010

**Travis County**  
Decennial data from  
the US Census Bureau

Change in a Census  
Tract's Total Population  
Age 18 Plus  
from 2000 to 2010  
at the 2000 tract-level

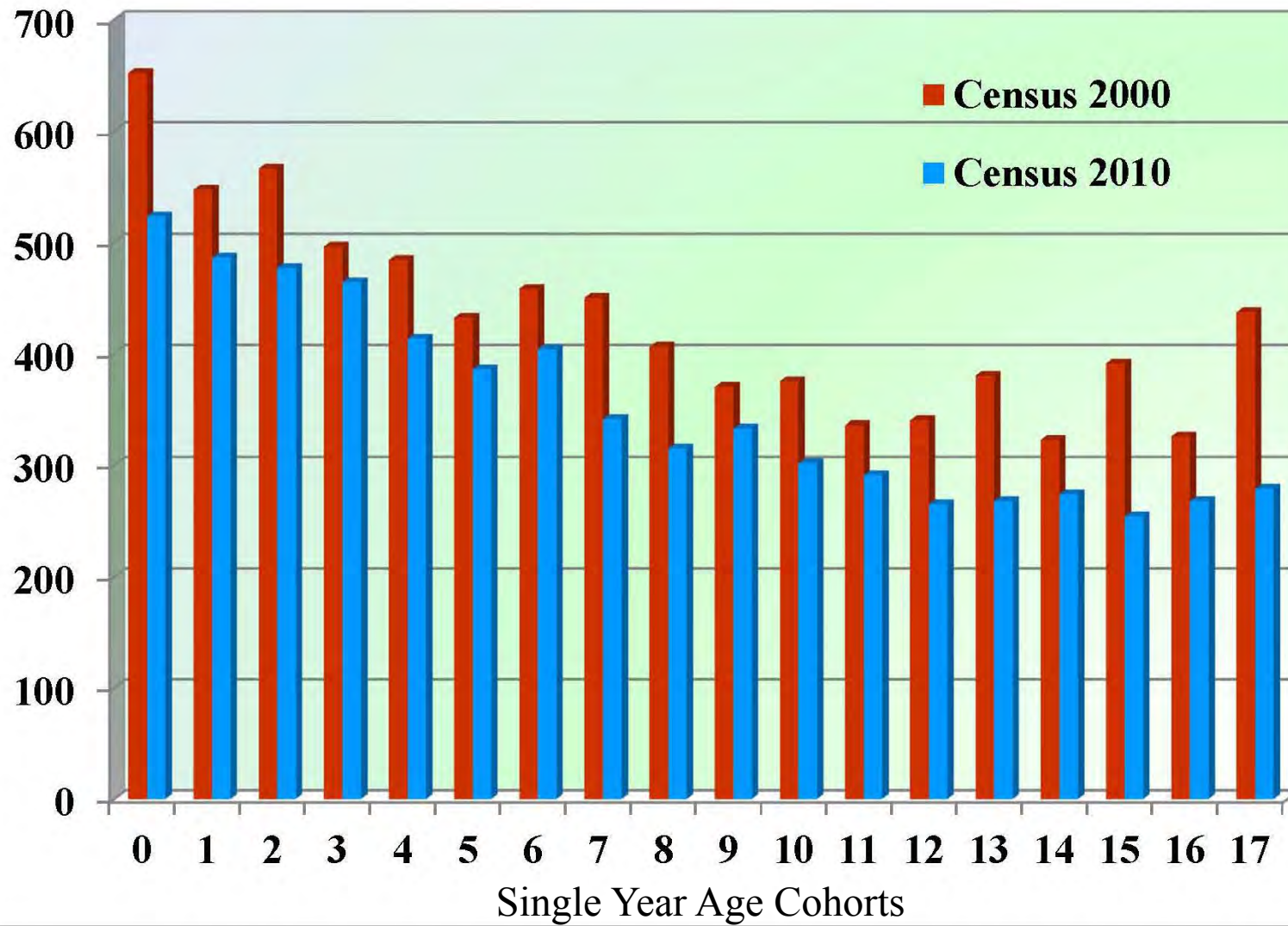






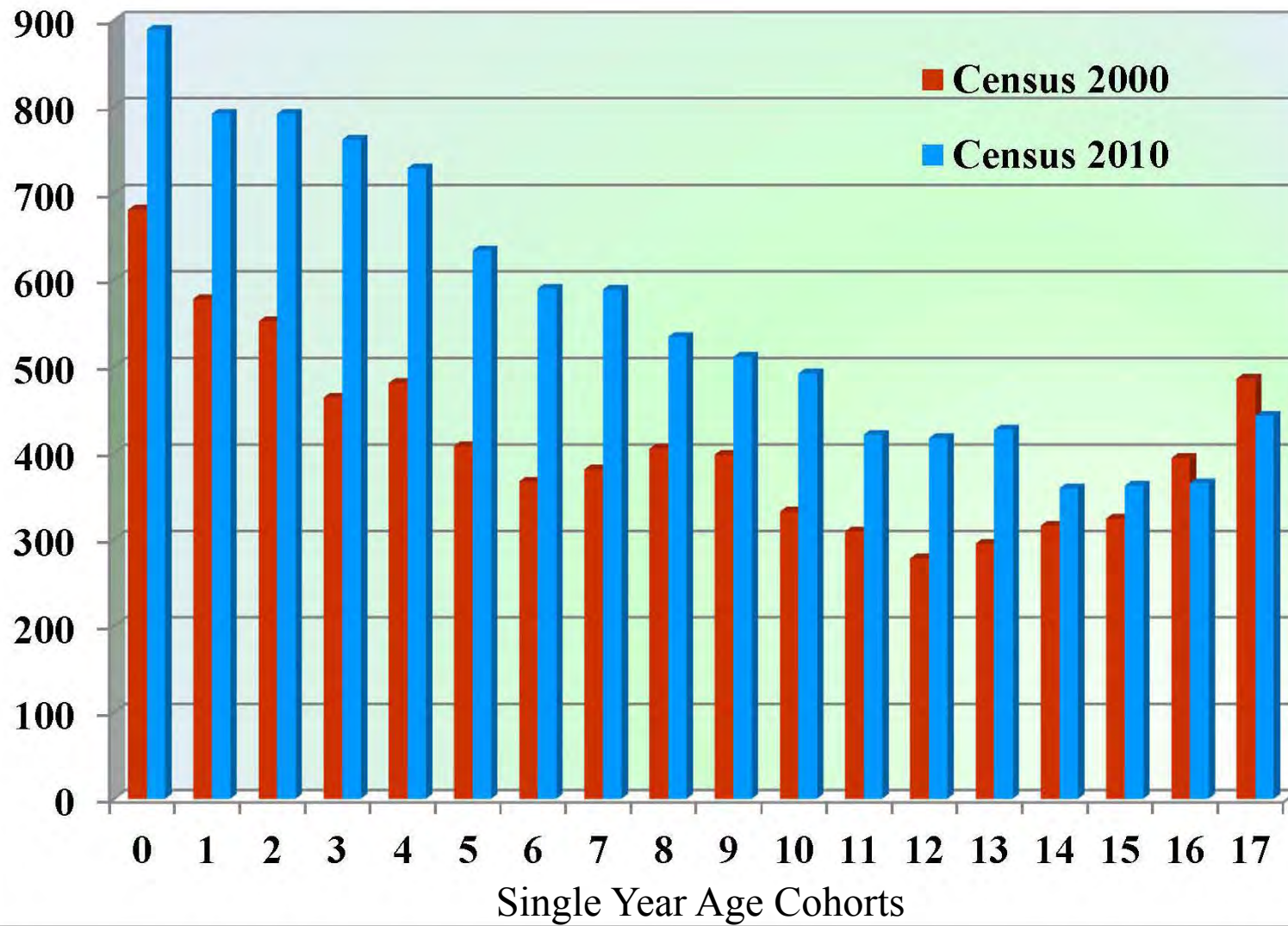


## Age Change: ZIP 78704, Census 2000 and 2010



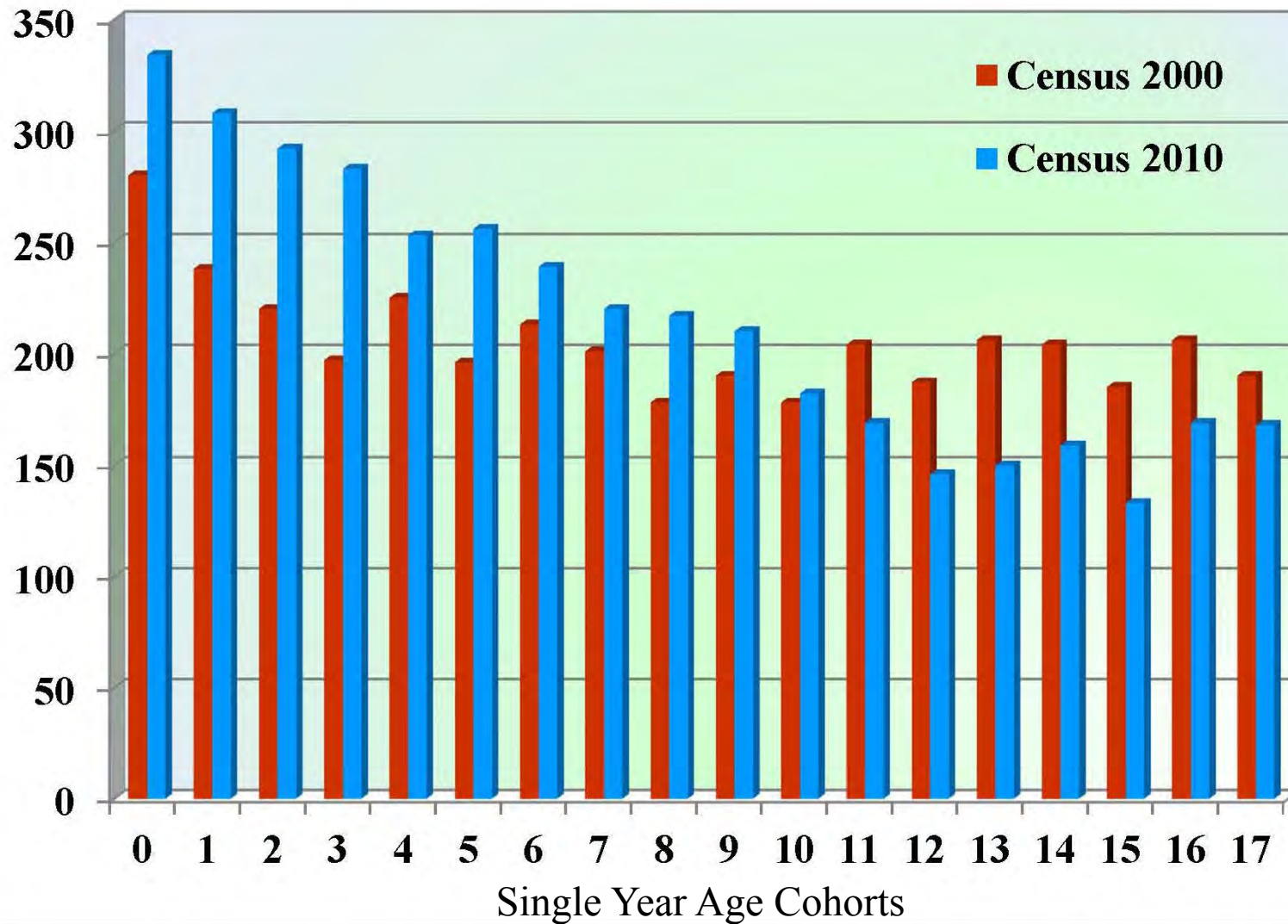


## Age Change: ZIP 78741, Census 2000 and 2010

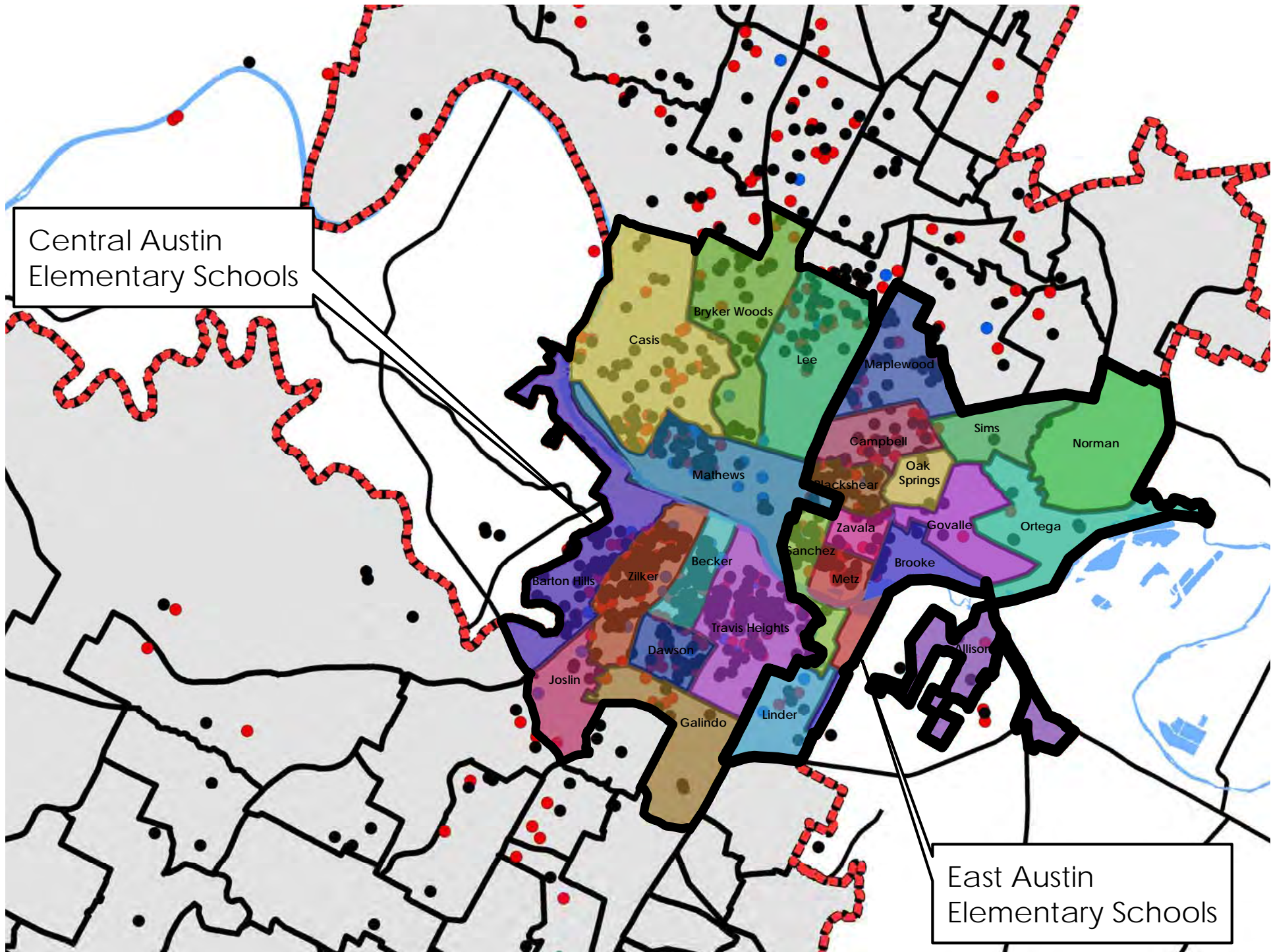




## Age Change: ZIP 78757, Census 2000 and 2010









## Central and West Austin Elementary Schools: Total Enrollment 2009 through 2015



*Barton Hills, Becker, Bryker Woods, Casis, Dawson, Galindo, Joslin, Lee, Mathews, Travis Heights, Zilker*

## East Austin Elementary Schools: Total Enrollment 2009 through 2015

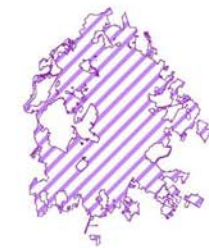


*Allison, Blackshear, Brooke, Campbell, Govalle, Linder, Maplewood, Metz, Norman, Ortega, Sanchez, Sims, Zavala*

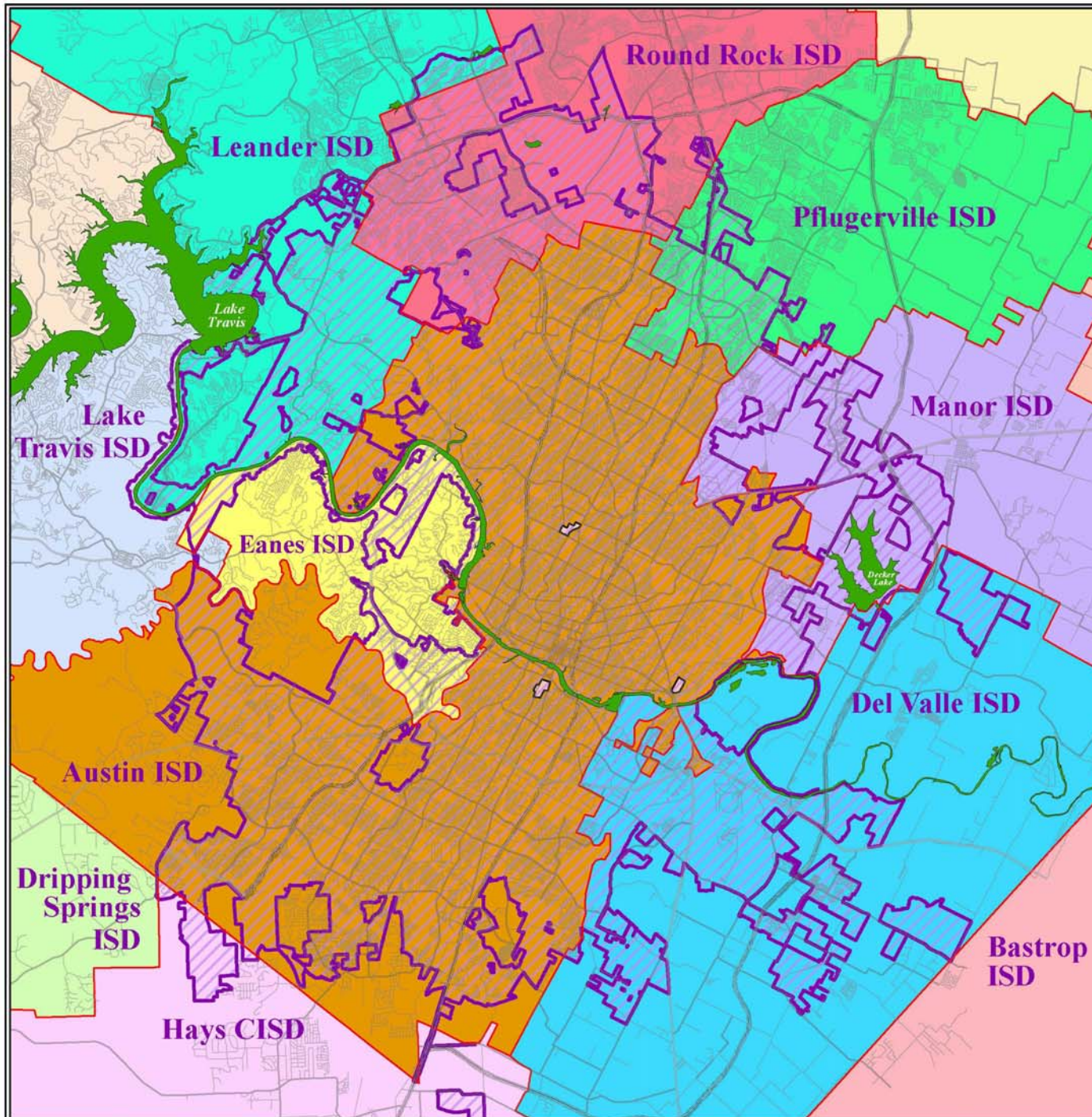


# Regional School Districts and the City of Austin

**March 2013**



**City of  
Austin**



Map produced by Ryan Robinson, City Demographer, Department of Planning, City of Austin, March 2013.

School District	Square Miles within City of Austin	Percent of City
Austin ISD	172.4	54.1%
Del Valle ISD	38.2	12.0%
Round Rock ISD	32.5	10.2%
Leander ISD	25.6	8.0%
Manor ISD	21.8	6.9%
Eanes ISD	11.7	3.7%
Pflugerville ISD	10.7	3.4%
Hays CISD	3.8	1.2%
Lake Travis ISD	1.4	0.4%
State of Texas	0.3	0.1%
	<b>318.6</b>	<b>100.0%</b>



A background image showing a city skyline with several tall buildings, including a prominent blue skyscraper. In the foreground, a group of people are walking and jogging on a paved path. A person is riding a bicycle. The scene is set in a park-like area with trees and a body of water in the background.

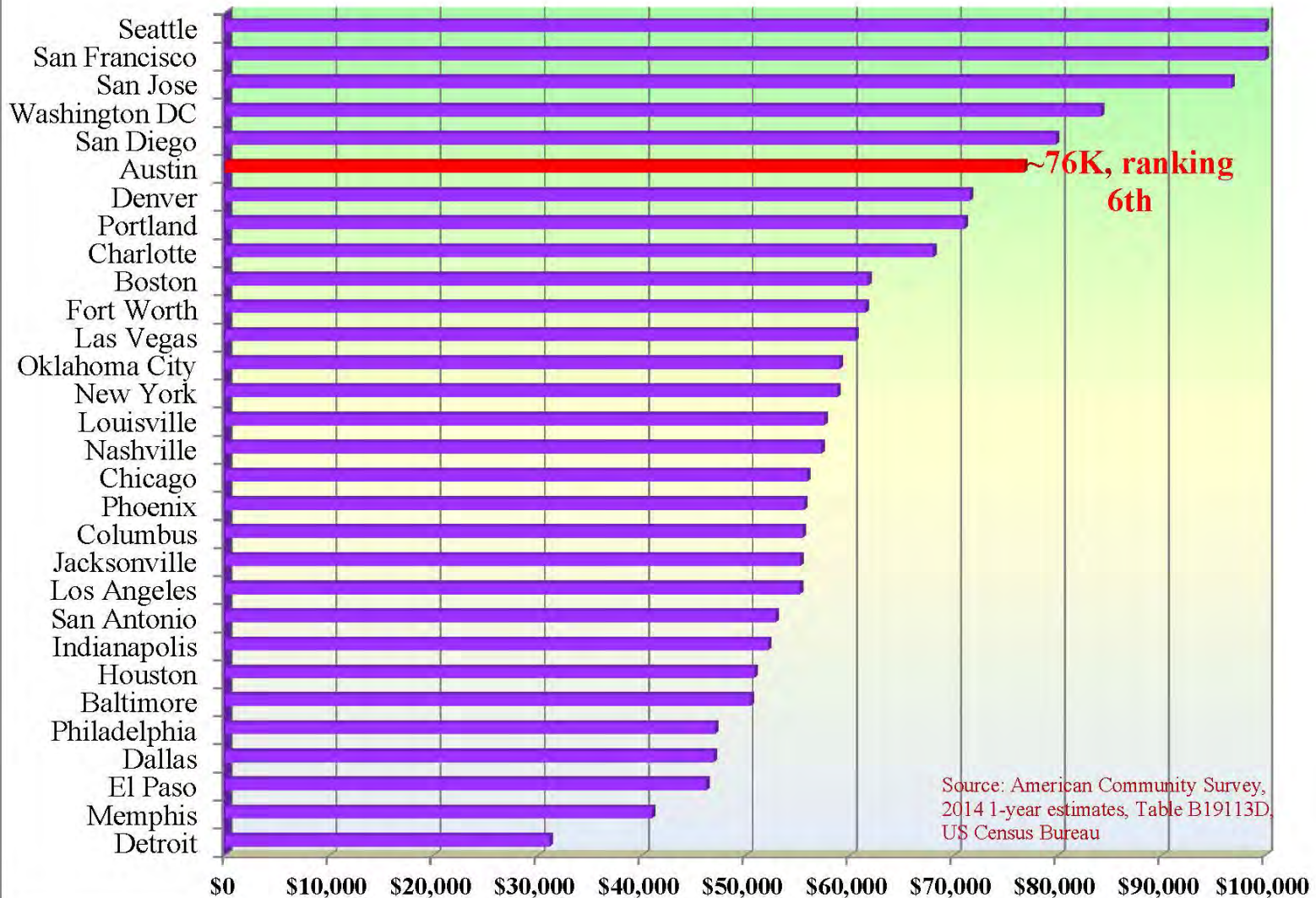
# **Collapsing Housing Affordability**

**Families with Children in Austin: a Demographic Snapshot**

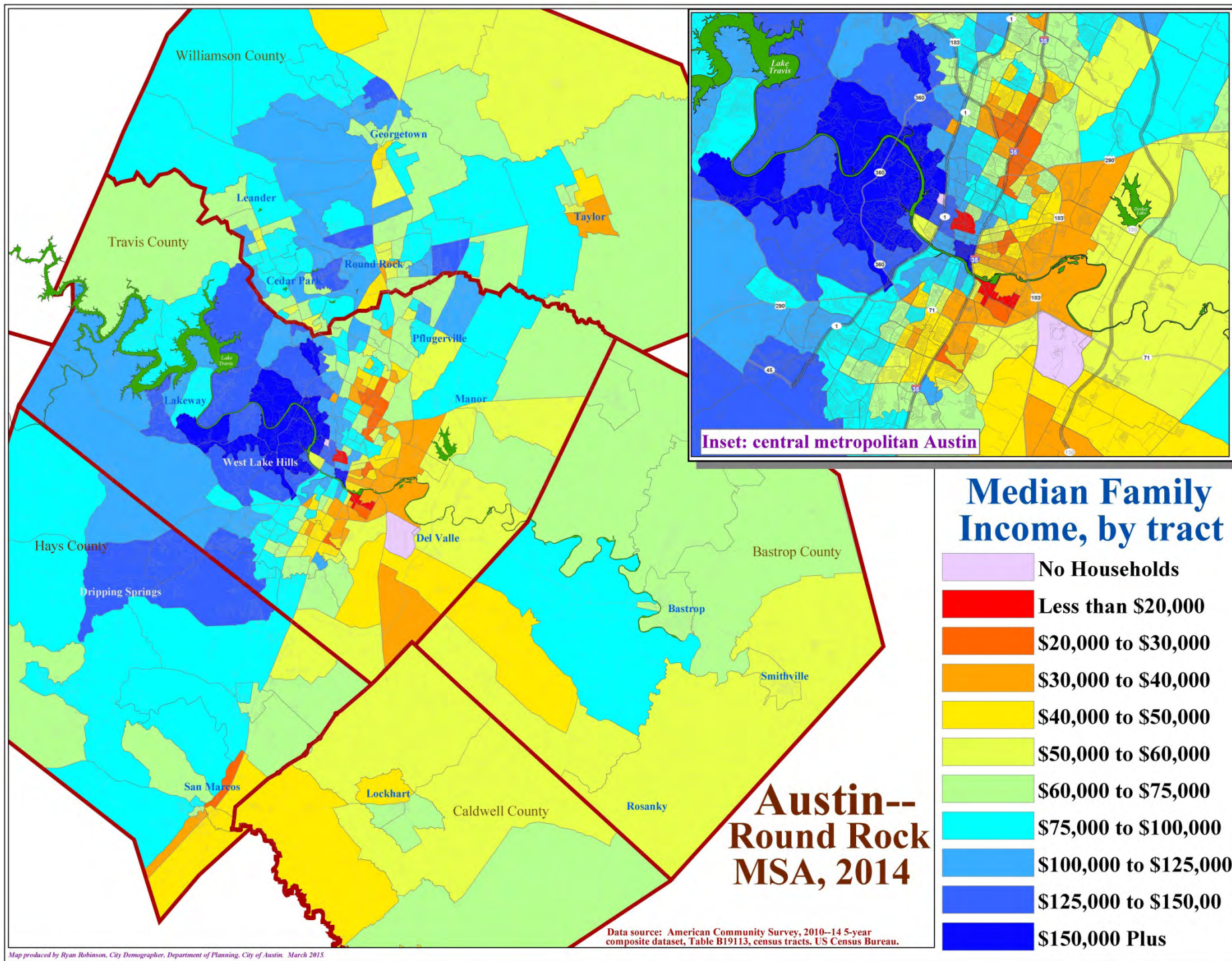
Ryan Robinson  
City Demographer  
City of Austin



## Median Family Income: Top 30 Cities, 2014









# Median Family Income

Austin, 2014 data

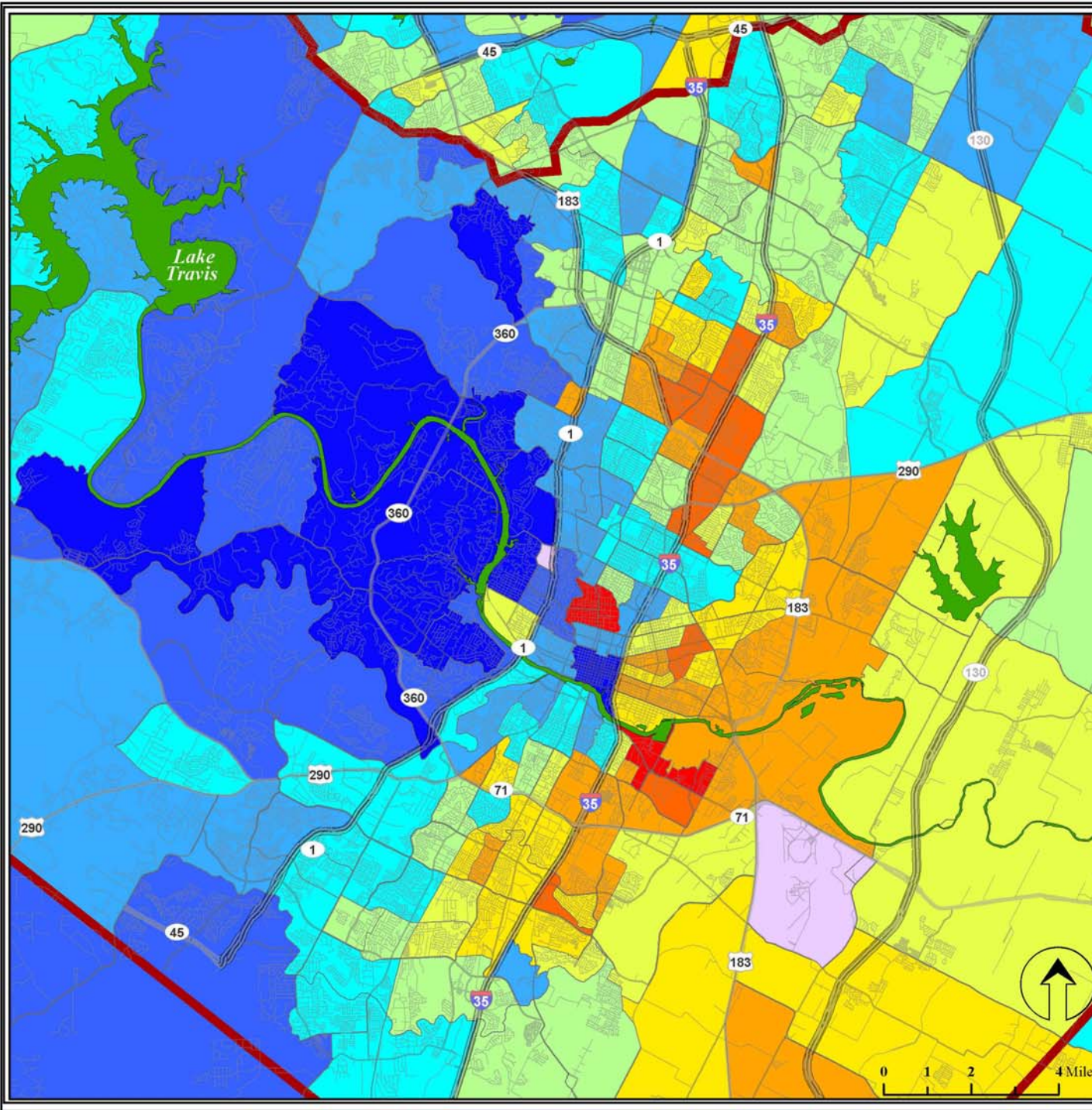
## Income Bracket



City of  
Austin

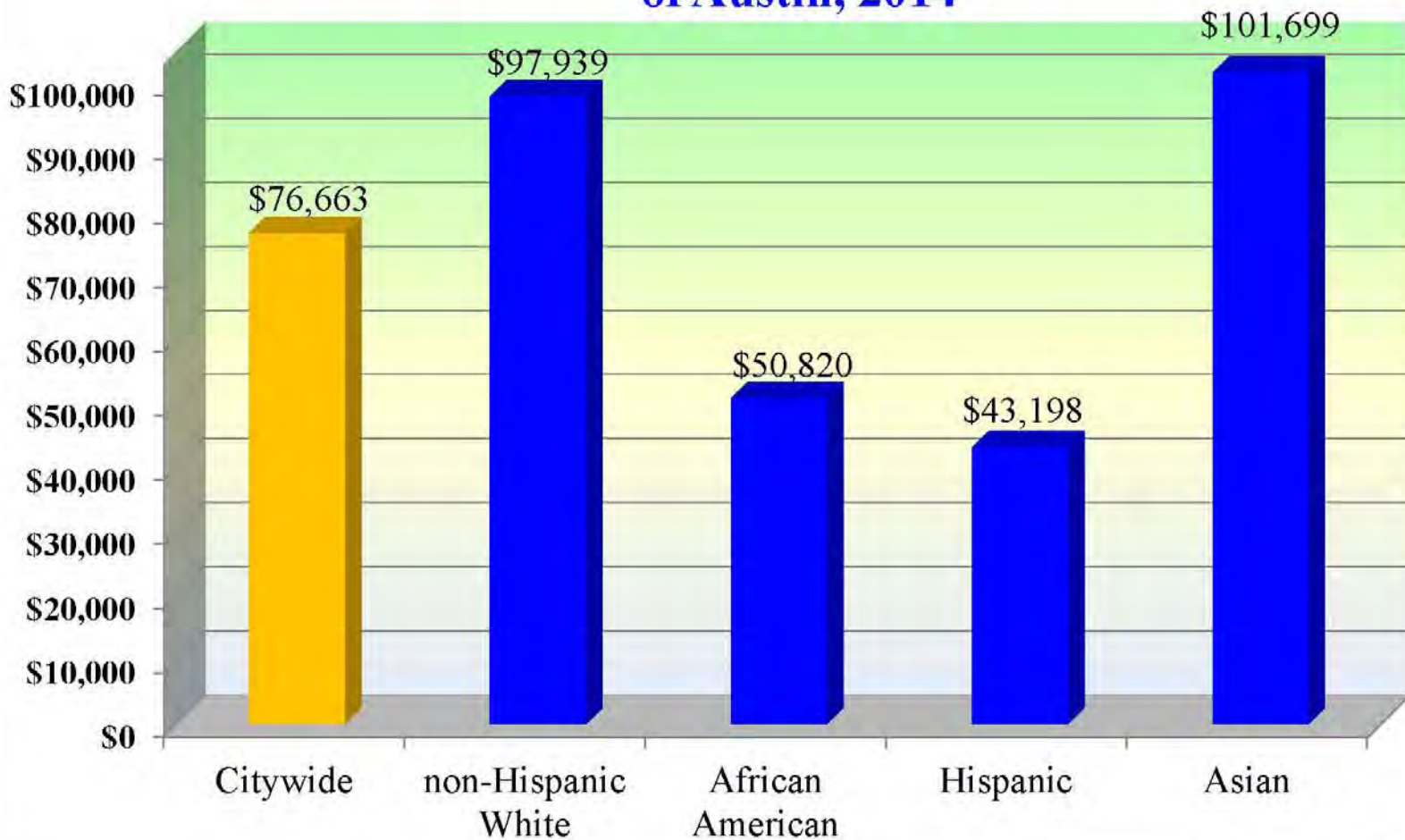


Data source: American Community Survey, 2010–14 5-year composite dataset, Table B19113, census tracts, US Census Bureau.  
Map produced by Ryan Robinson, City Demographer, Department of Planning, City of Austin, January 2018.



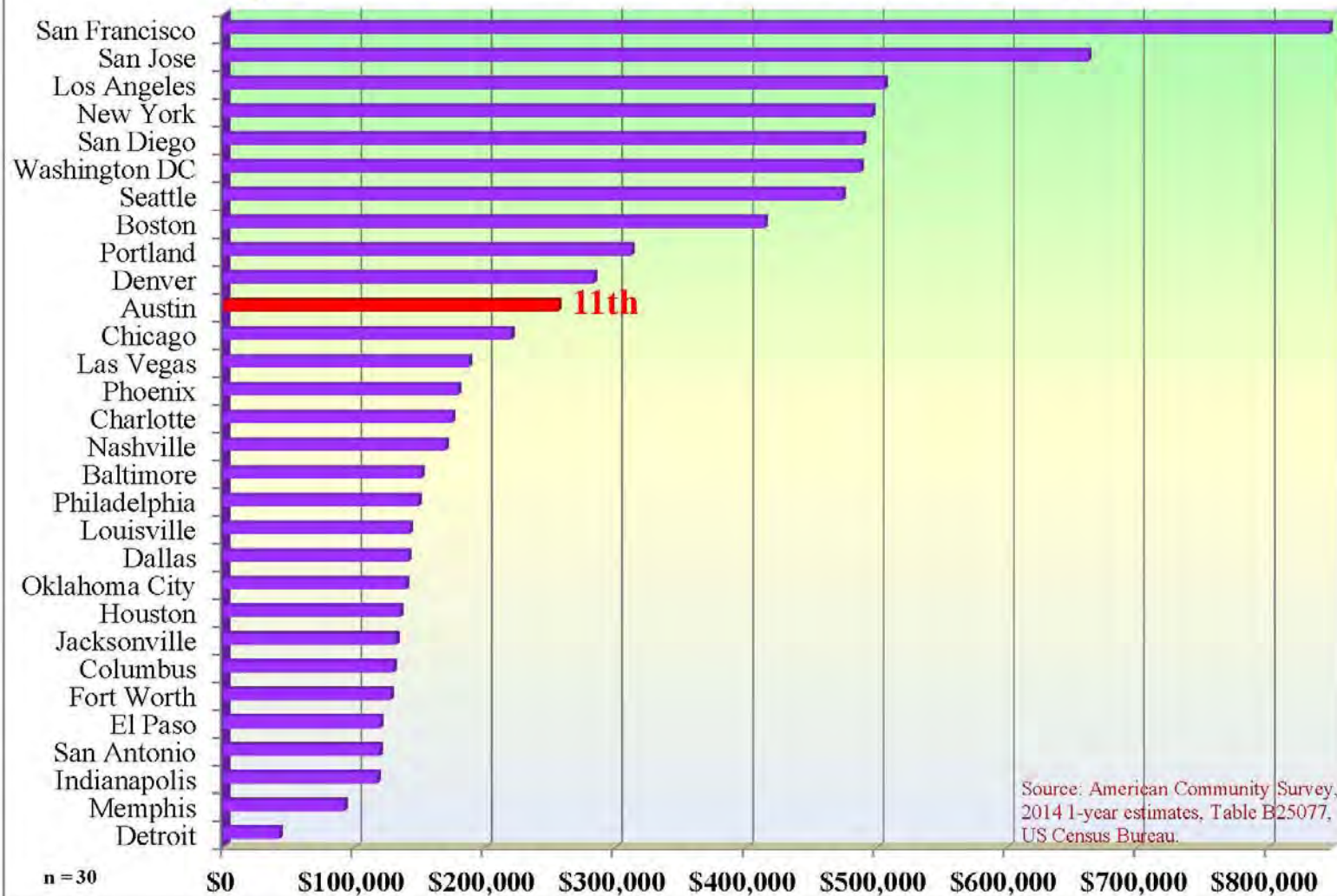


## Median Family Income by Race and Ethnicity, City of Austin, 2014



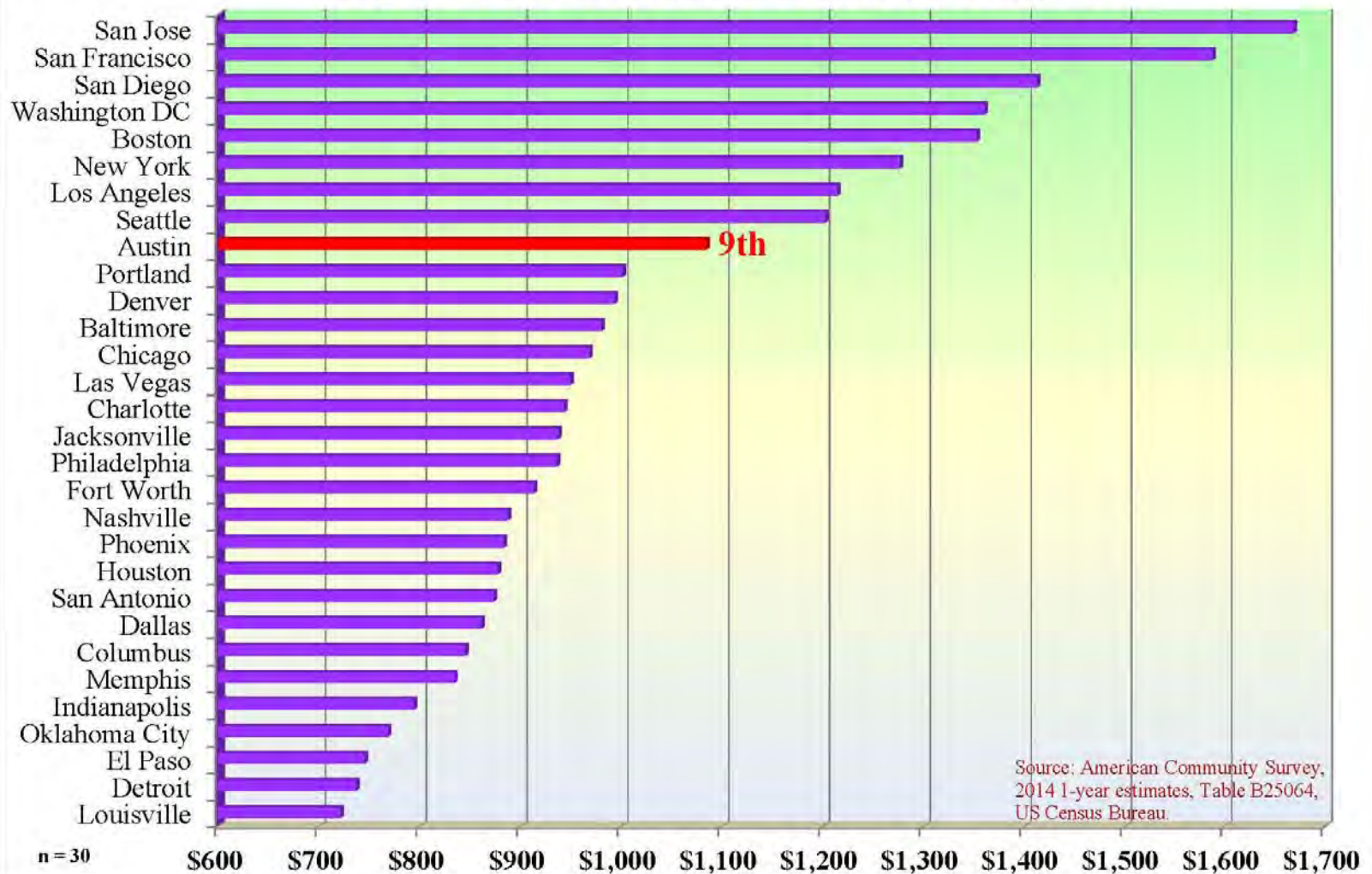
Source: American Community Survey, 2014 1-year estimates, Table B19113, US Census Bureau.

## Top 30 US Cities and Median Home Value, 2014





## Top 30 US Cities and Median Rent, 2014



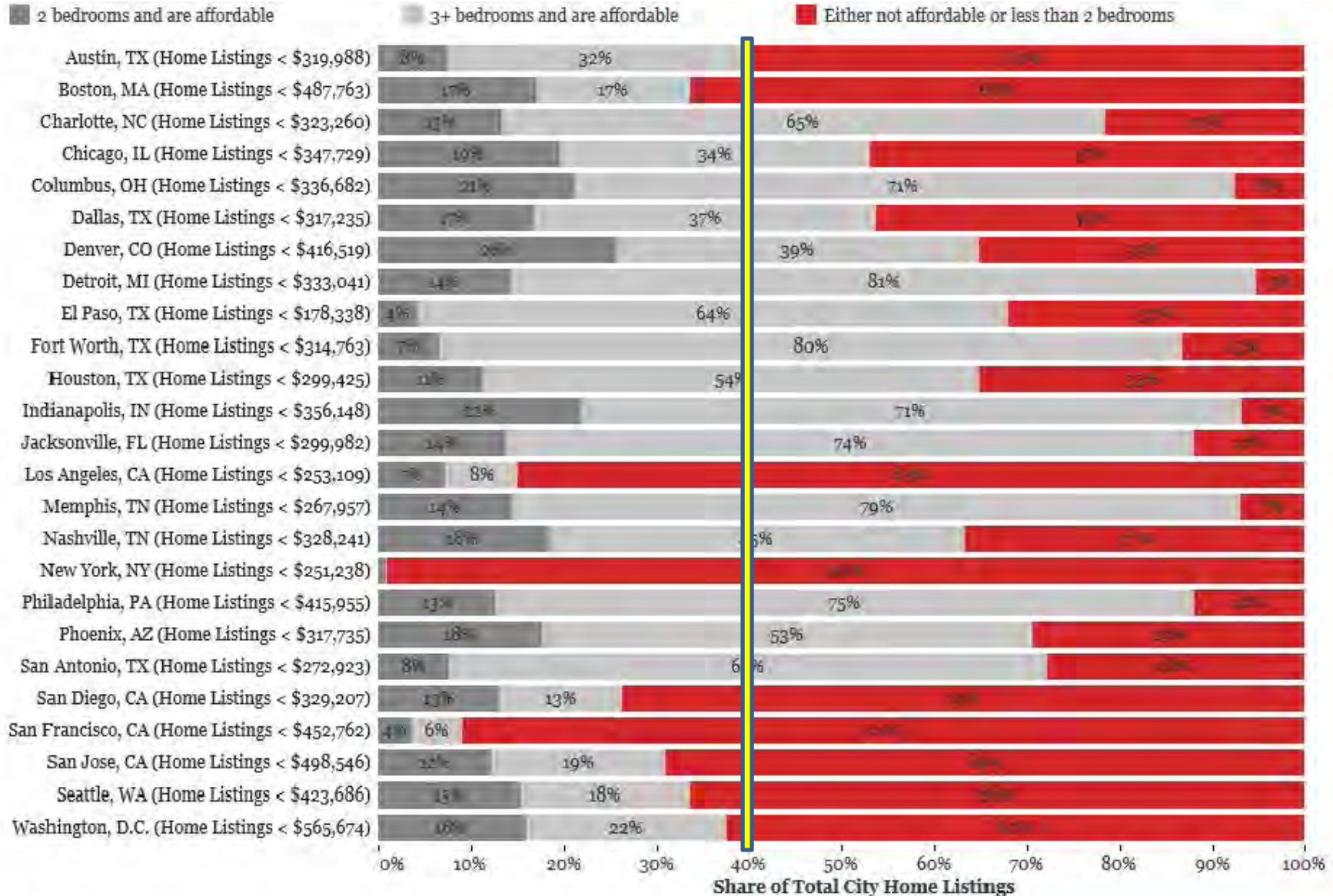
# GOVERNING

THE STATES AND LOCALITIES

FINANCE | HEALTH | INFRASTRUCTURE | MANAGEMENT | ELECTIONS | POLITICS | PUBLIC SAFETY | URBAN | EDUCATION | COMMENTARY | DATA | PHOTOS | VIDEO

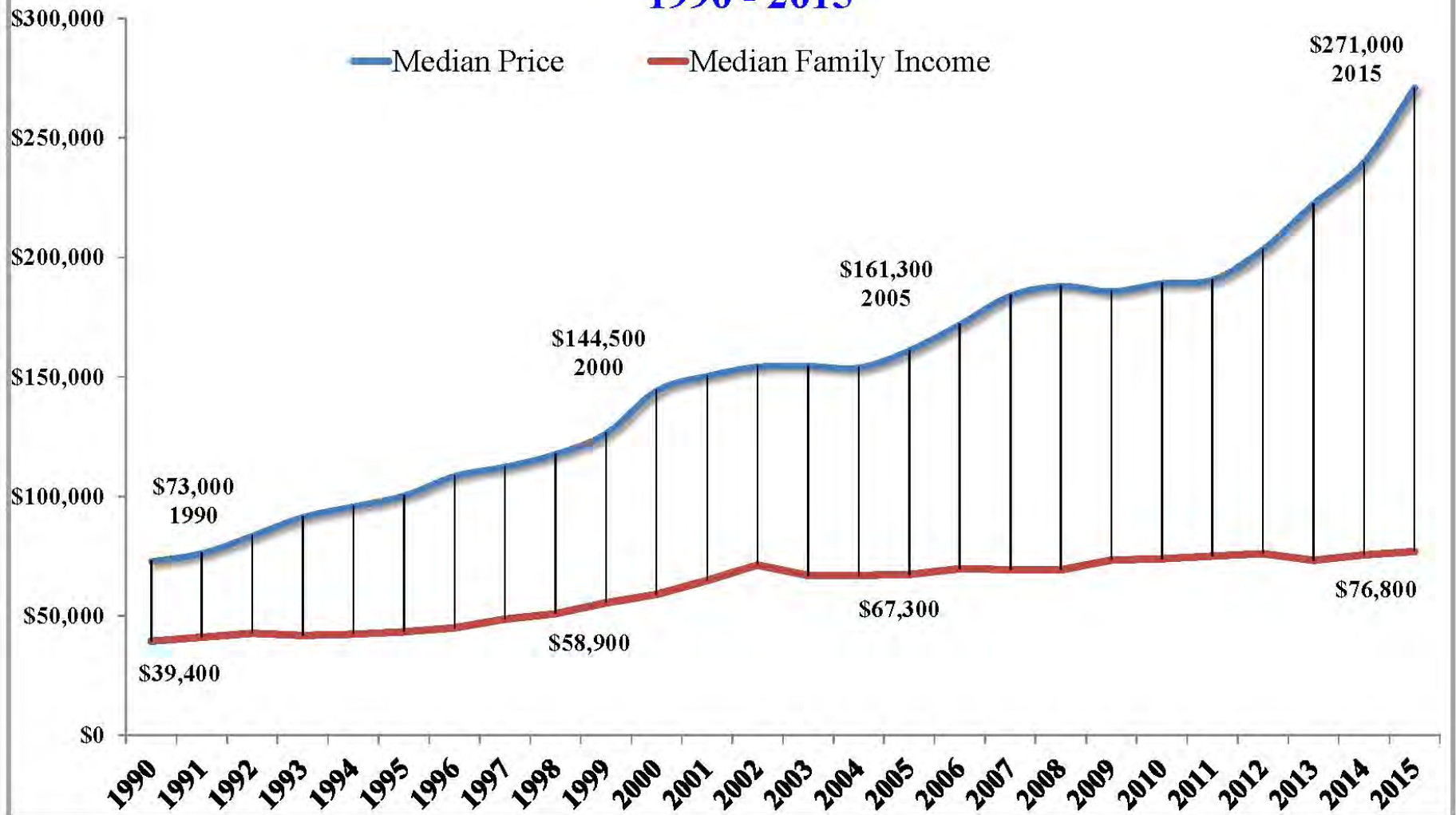
Trulia provided real estate data to *Governing* compiled from multiple listing services, brokers and agents. Statistics, current as of September, reflect more than 5,500 home listings per city.

Home listings shown below represent shares of cities' total home listings that are affordable for a household earning the [median family income](#), with maximum home values they can afford shown in parenthesis.

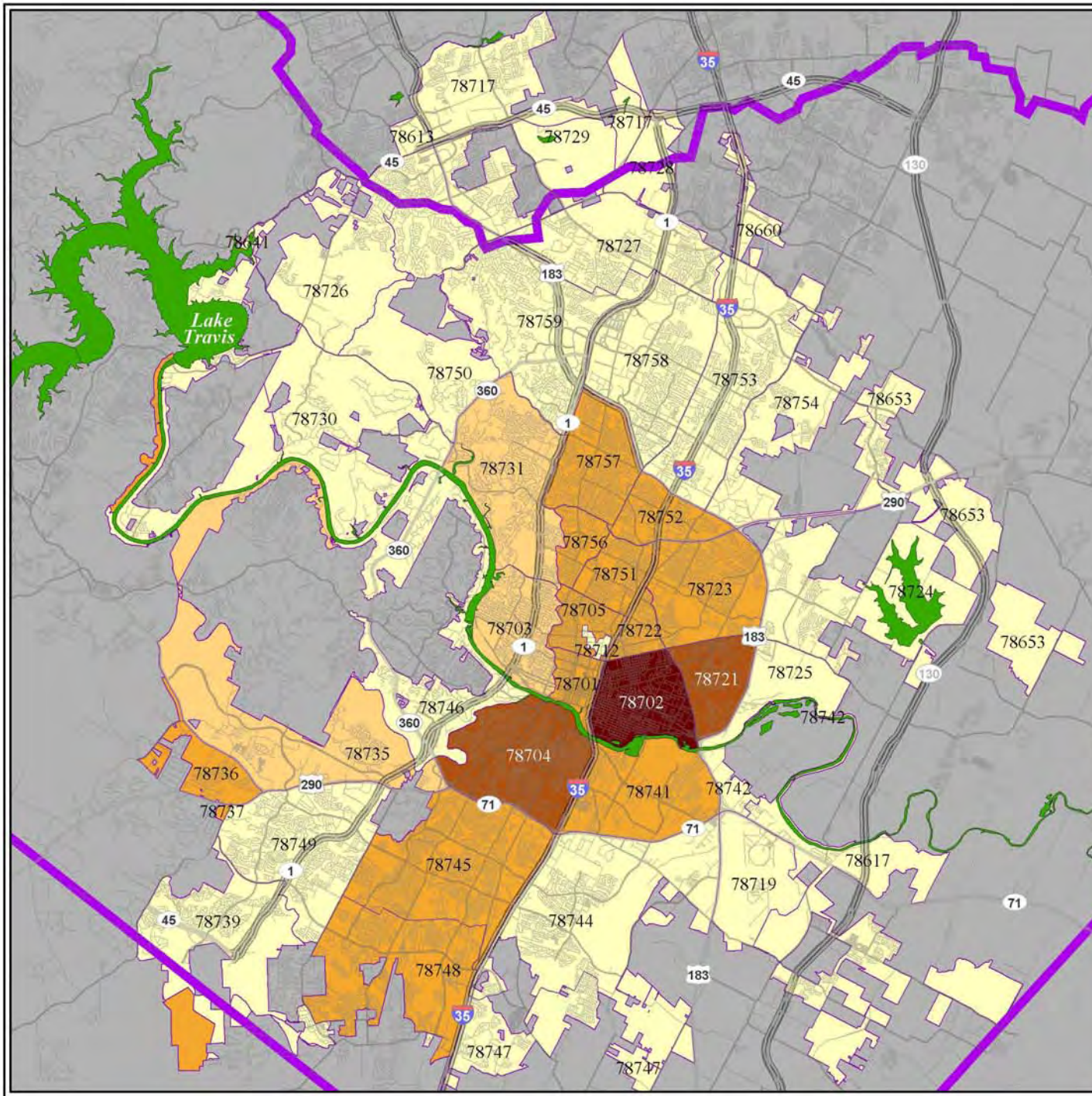




## Austin Area median home prices compared with median family income 1990 - 2015



# Median SF Value Change by ZIP Code: 2007 to 2014



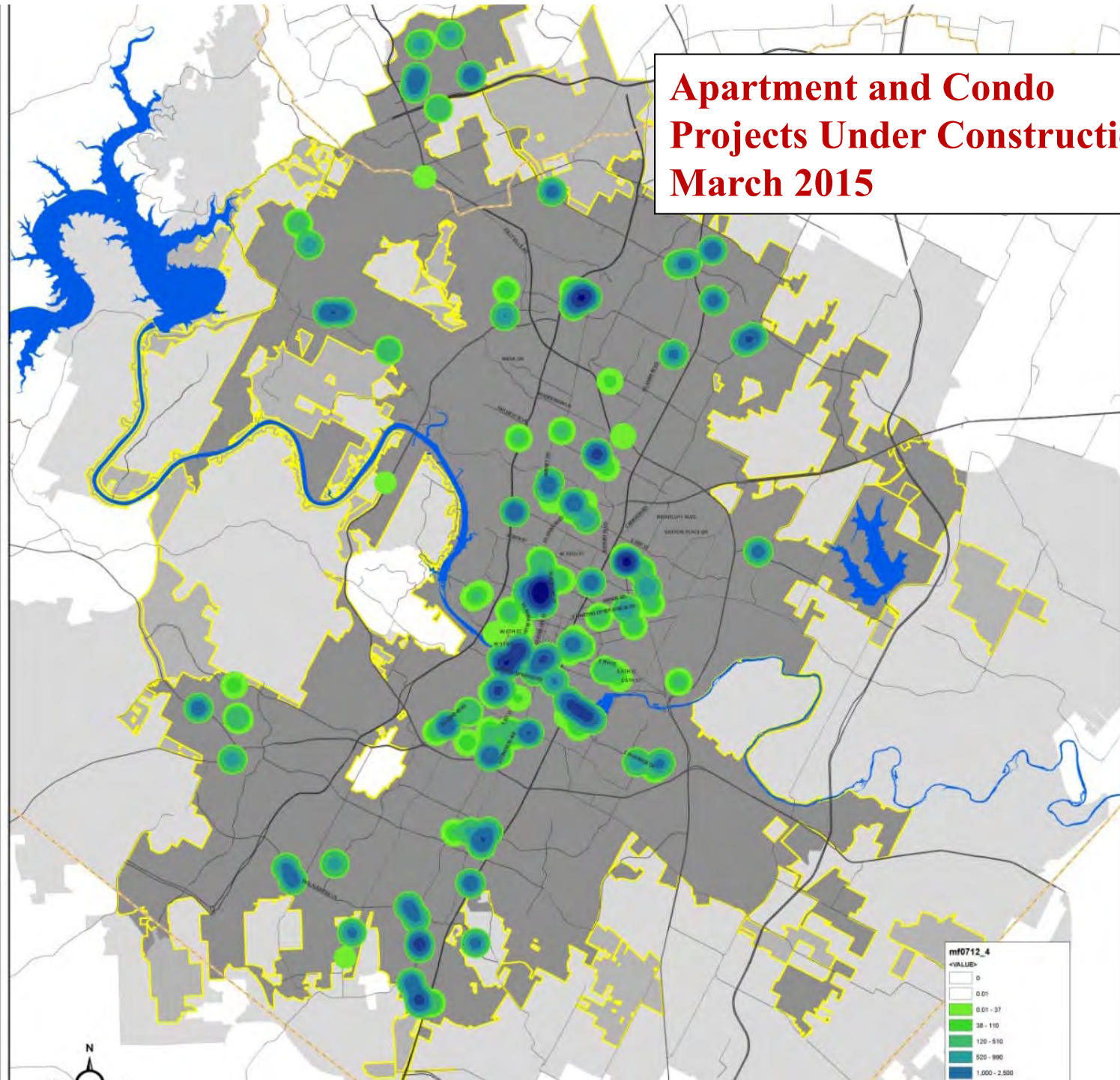
## Percent Change

- Less than 50%
- 50% to 100%
- 100% to 150%
- 150% to 200%
- 200% Plus

Data source: TCAD and WCAD data--smoothed with American Community Survey data, 2008-2012 5-year composite dataset.  
Map produced by Ryan Robinson, City Demographer, Department of Planning, City of Austin, November 2014.



## Apartment and Condo Projects Under Construction, March 2015











Are we becoming Monaco on the Colorado?

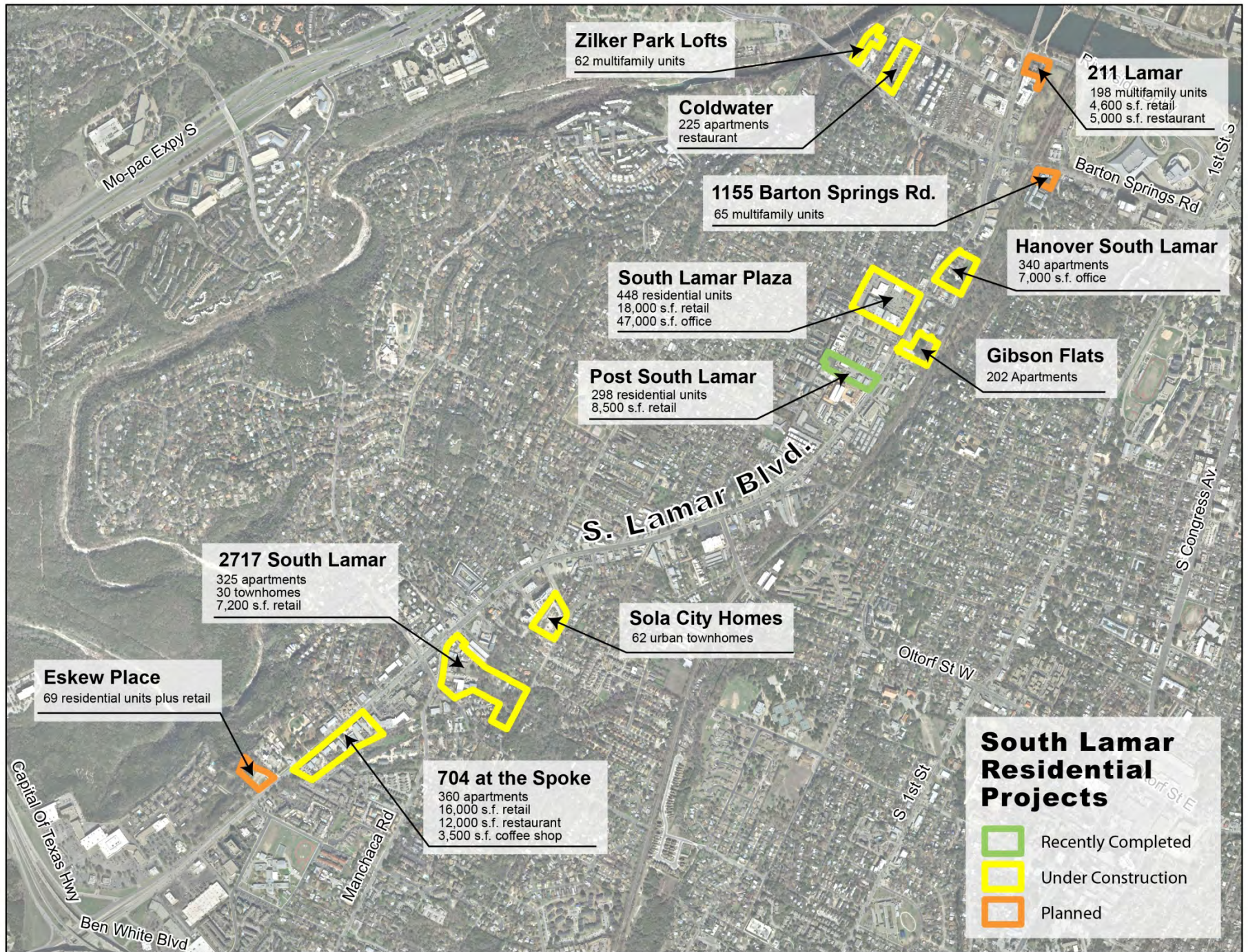
September 24, 2015



**Implementing  
our  
Comprehensive Plan  
should help...creating  
Complete Communities  
is a key.**

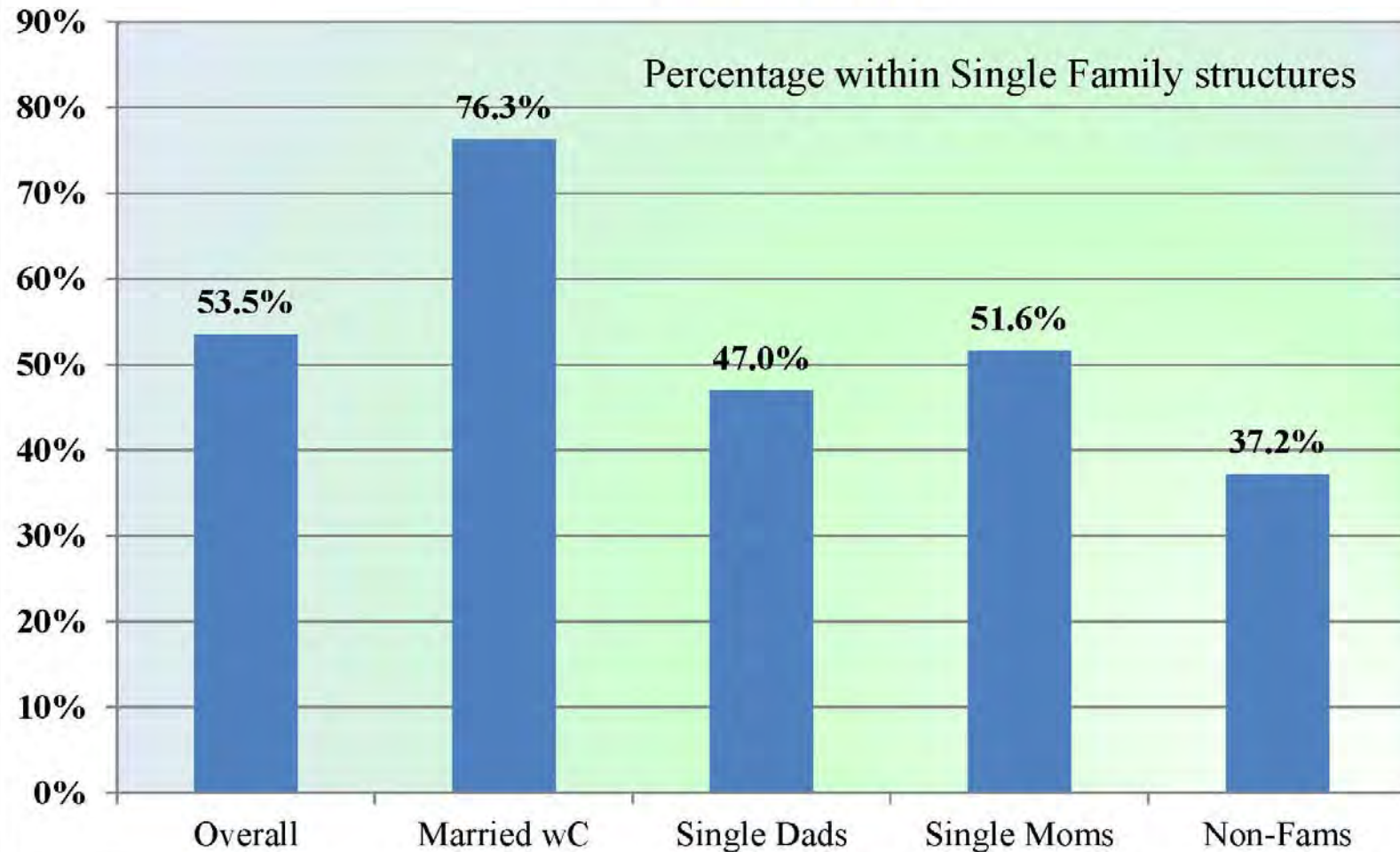
**CODENEXT**  
SHAPING THE AUSTIN WE IMAGINE







## Household Type by Housing Unit Type: City of Austin, 2014







Boston's classic triple-decker homes have long been an affordable choice for middle-class families. Now that's changing.  
(FlickrCC/Blake Gumprecht)







