

# TRANSPORTATION SAFETY & VISION ZERO



Austin City Council Work Session, Dec. 8, 2015

Austin Police Department

Austin Transportation Department

Planning and Zoning Department

# Today's Presentation

- Statistics
- Vision Zero Action Plan
- Current Safety Efforts
- Next Steps



**64 people die in crashes**  
**in the average year**

Source: APD

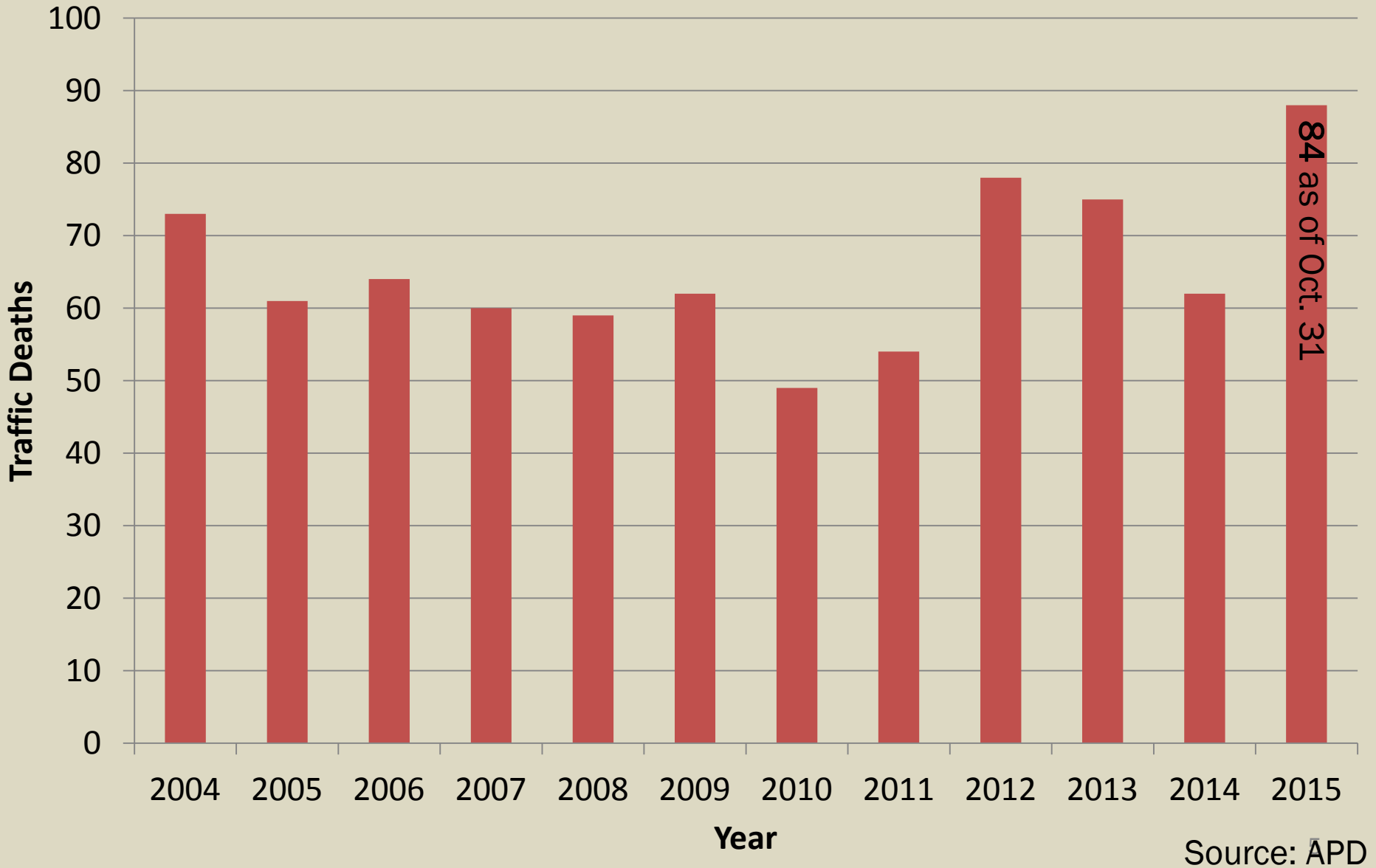


The background is a grayscale photograph of an emergency scene at night. Several fire trucks are visible, with their emergency lights flashing. Firefighters in full gear, including helmets and reflective vests, are standing around the trucks. One firefighter's vest has the word "FIRE" on it. The scene is illuminated by the trucks' lights and streetlights, creating a high-contrast, grainy image. The text is overlaid on this image in a bold, dark red font.

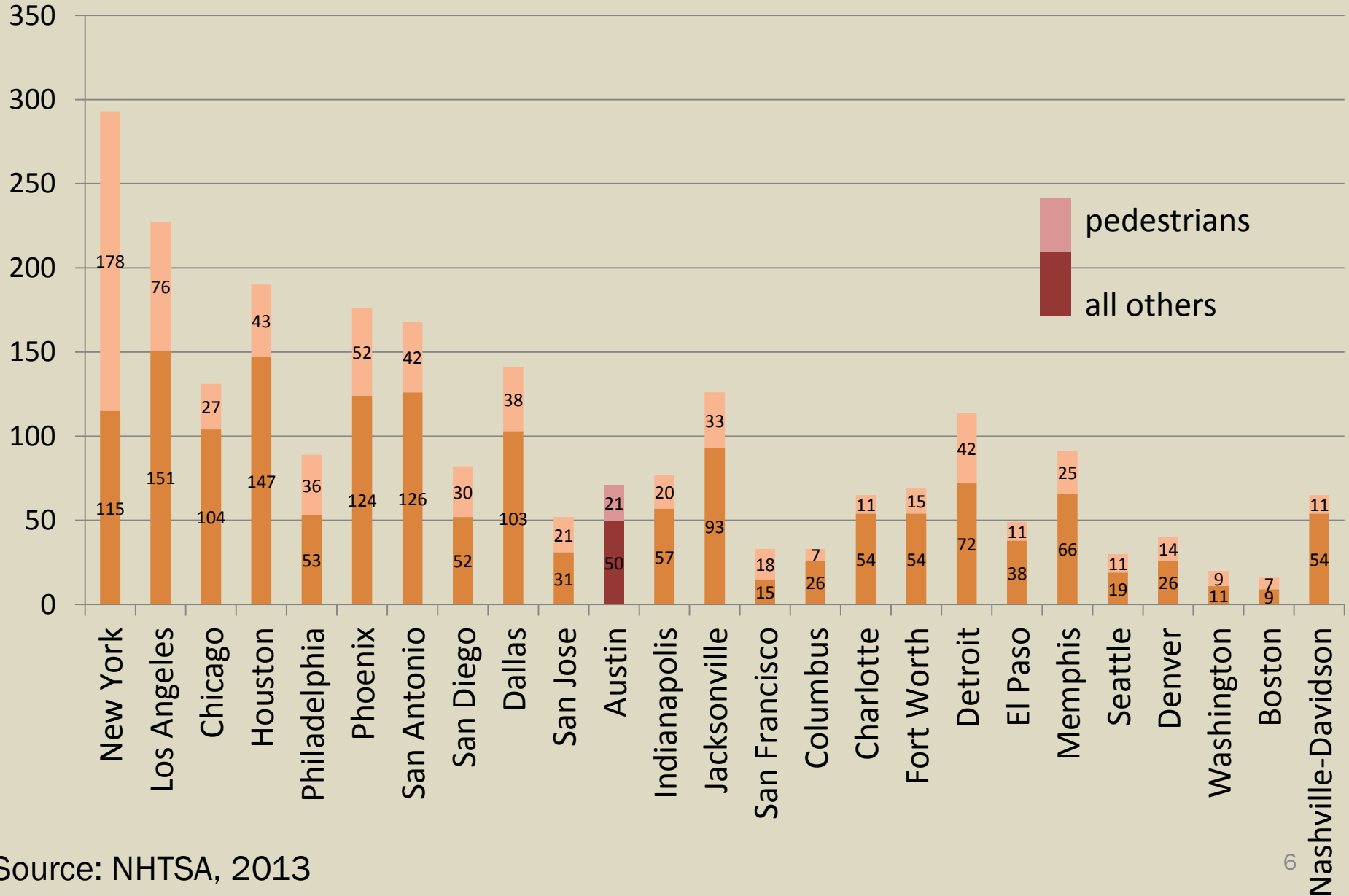
**Over 700 total traffic fatalities since 2004**

**Austin ranks 7<sup>th</sup> for pedestrian fatality rate per 100K population**

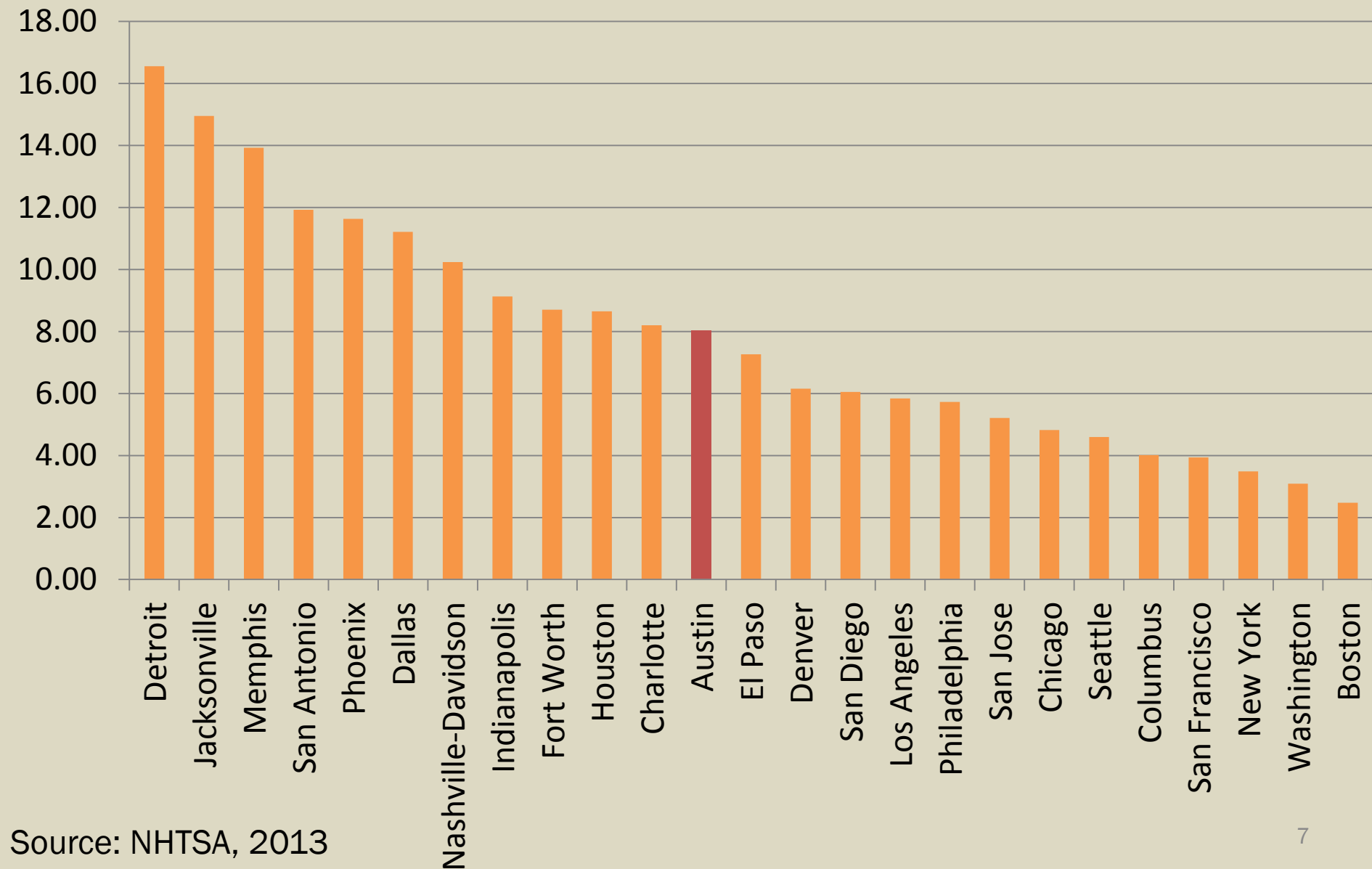
# Austin traffic deaths



# Comparison to other cities

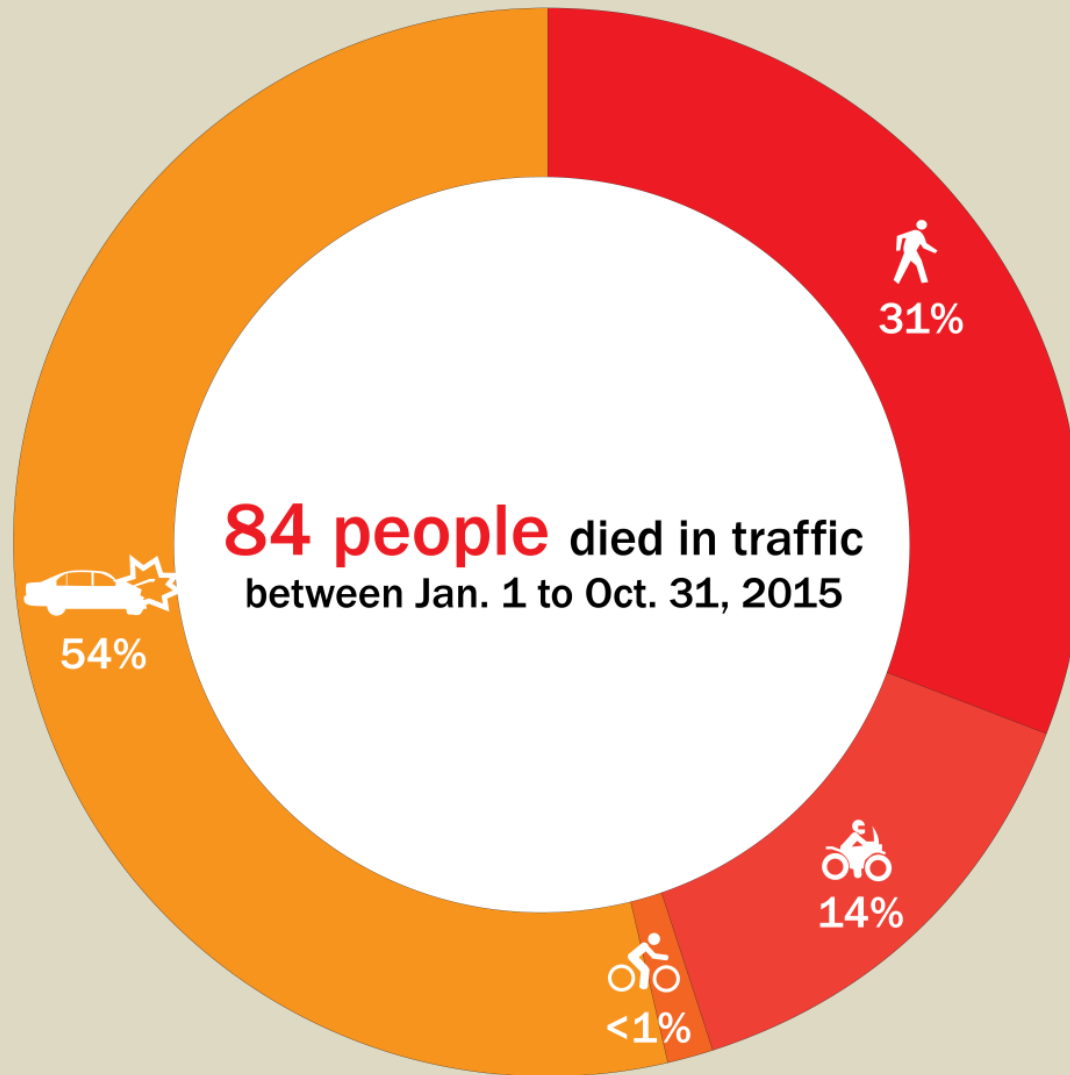


# Fatality rate per 100K



Source: NHTSA, 2013

# 2015 Deaths by Transportation Mode through Oct. 31



Source: APD



# 2015 Fatalities Notable Findings

January 1, 2015 – October 31, 2015

## Impairment

- Motor Vehicles = 59%
- Pedestrians = 44%
- Motorcycle = 50%

## Pedestrians

- In a Prohibited Area = 92%
  - ❖ Crossing or On a Highway (I-35, US 183, etc.)
  - ❖ Crossing Mid-Block
- Transients = 42%
- 6pm – 6am = 84%

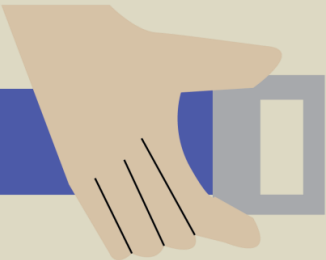
Source: APD as of Oct. 31, 2015

## Driver's License Issues

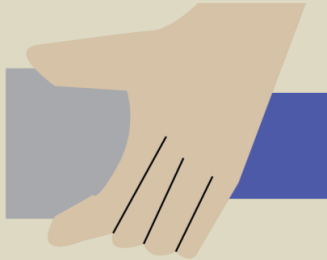
- Motor Vehicles
  - ❖ No valid license = 30%
  - ❖ Previous suspension = 30%
  - ❖ Prior APD involvement = 70%
- Motorcycles
  - ❖ No valid license = 42%
  - ❖ Previous suspension = 25%
  - ❖ Prior APD involvement = 58%



any traffic death is too many



**Public health problem**  
like smoking or not wearing a  
seatbelt





Traffic injuries & deaths are  
**preventable;** therefore  
**none are acceptable**



Improving safety

**will require everyone**



**Safety is** the **primary**  
consideration in transportation  
decision-making





Traffic safety solutions must be addressed **holistically** through **education, enforcement, engineering/design**

# Imagine Austin amendment

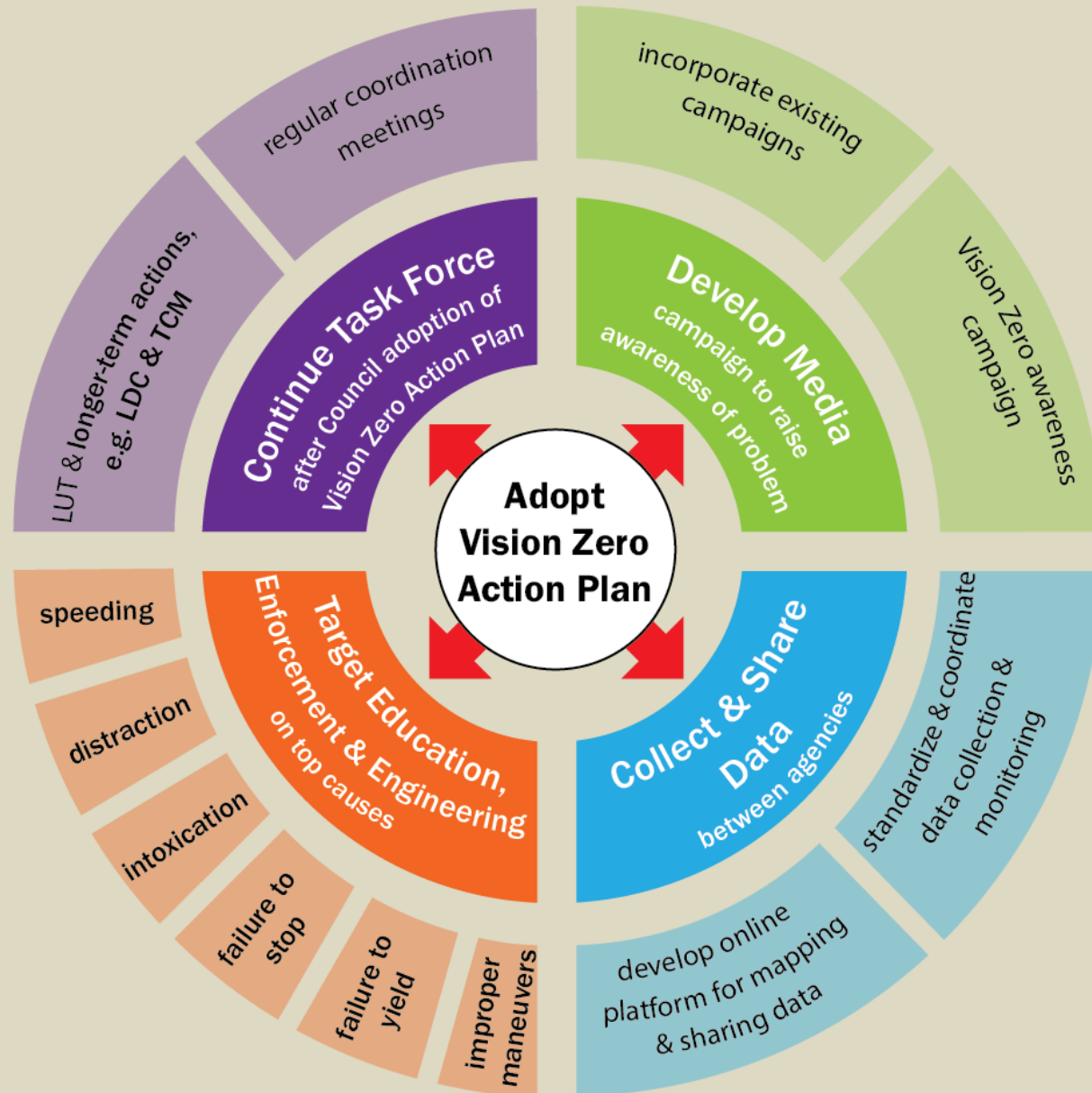
**Policy:** “The City commits itself to eliminating transportation-related deaths and serious injuries ...

Improving safety through land use, urban design, transportation engineering, education, and enforcement is **foundational to Austin becoming a city of complete communities.**

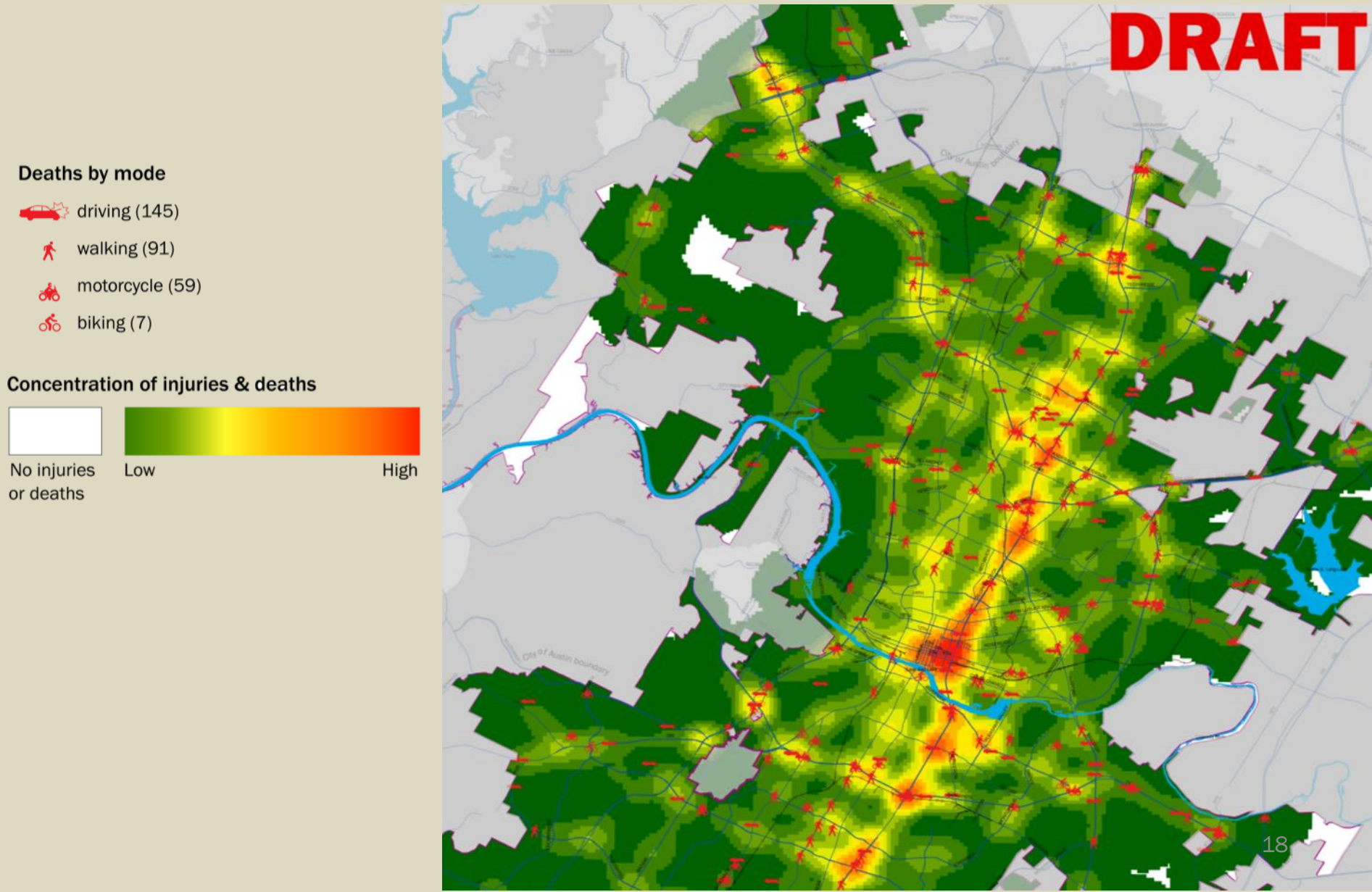
**Safety is the top priority for the transportation system and requires a collaborative, multipronged approach using the guiding principles of Vision Zero...”**

**Action:** “Create an ongoing Vision Zero Task Force to develop a Vision Zero Action Plan and subsequent updates to that Action Plan”

# Identifying Solutions: V0 Action Plan

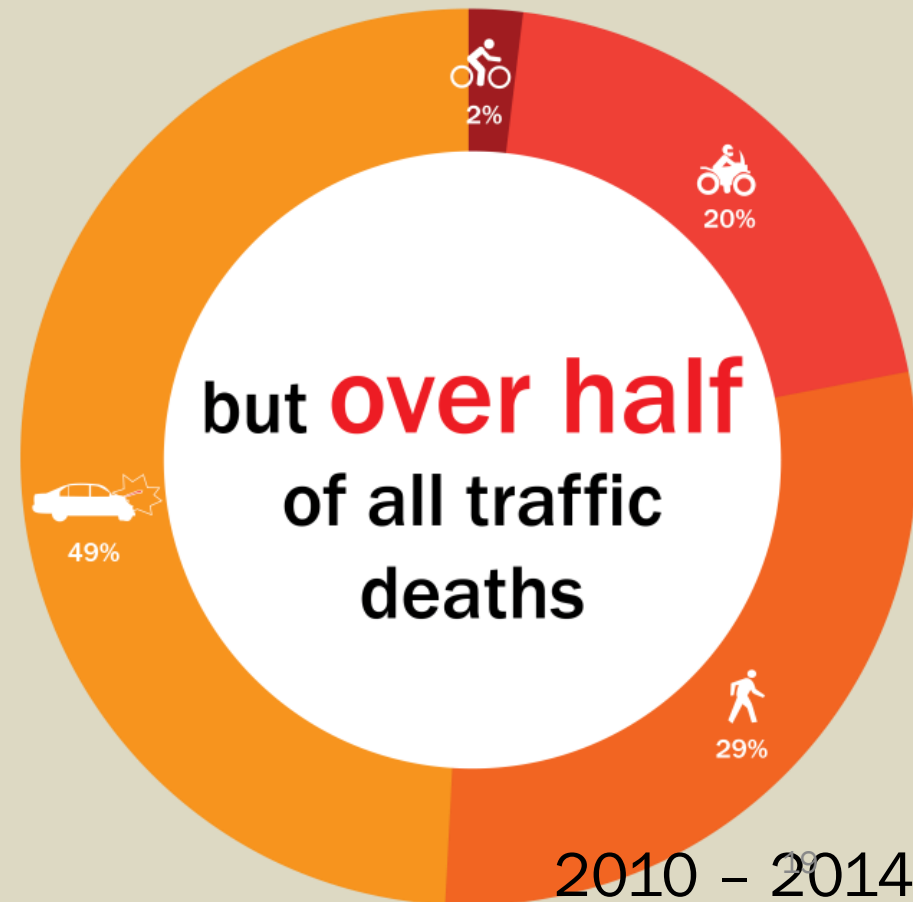


# 1. Collect & Share Data

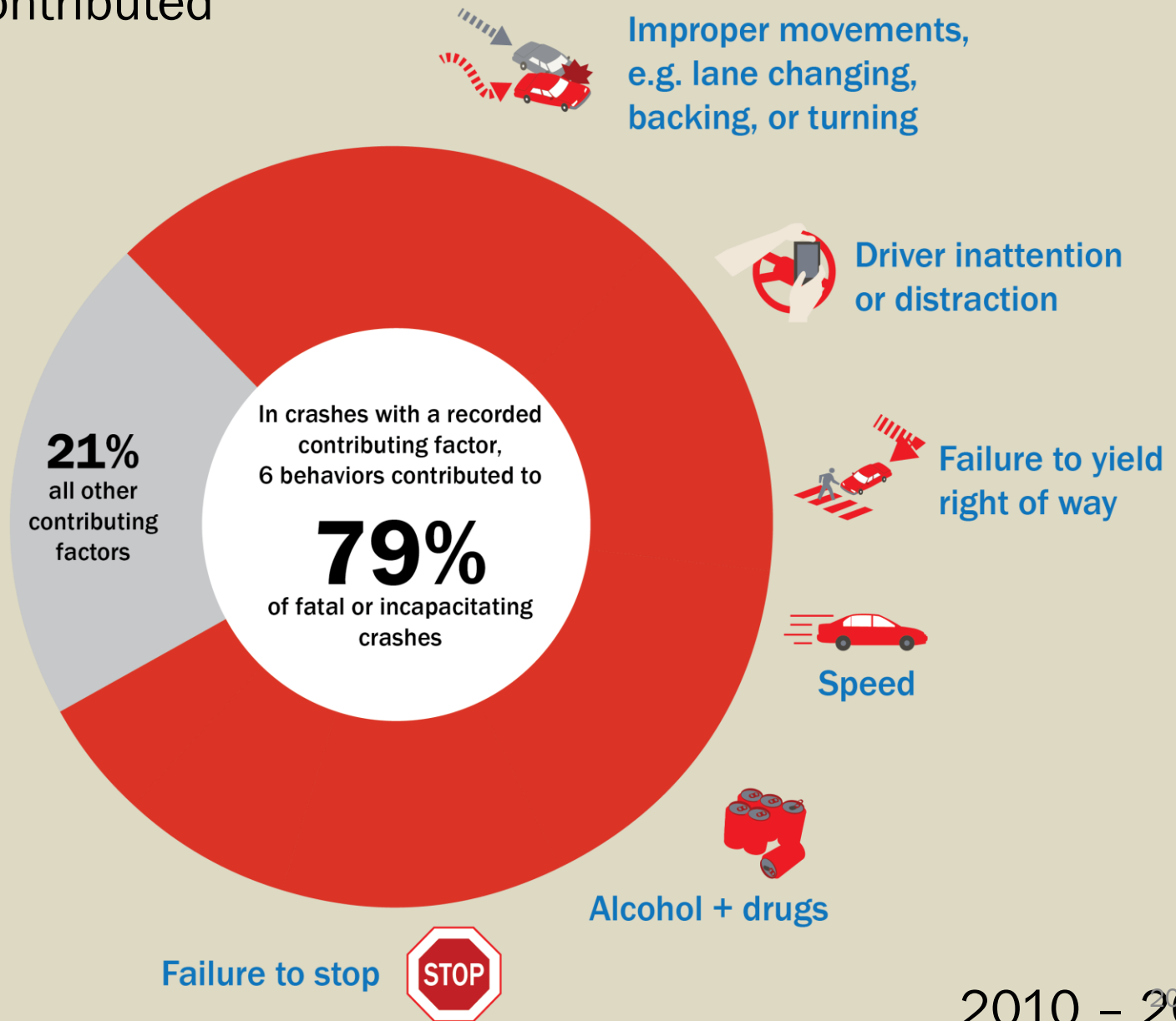


# Who's Affected?

disproportionately, people walking, biking, & riding motorcycles



# Contributing Factors – doesn't include charges or may have contributed



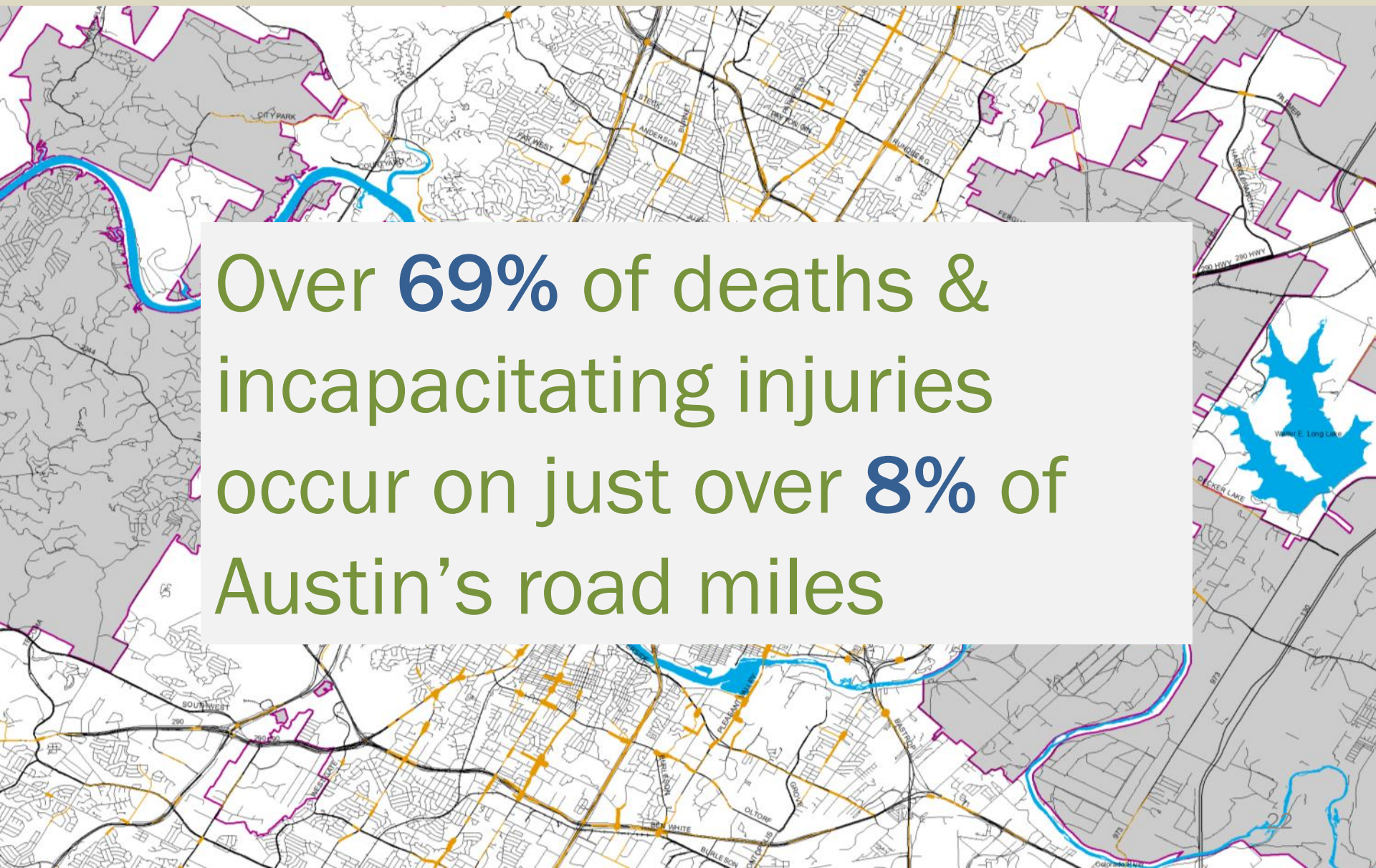
2010 – 2014



## 2. Target Education, Enforcement & Engineering



# Incapacitating Injuries & Deaths Road Network Map

A detailed map of Austin, Texas, showing the road network. Major roads are highlighted in orange and yellow, while smaller roads are in grey. Water bodies like the Colorado River and various lakes are shown in blue. The map is overlaid with a semi-transparent white box containing text.

Over **69%** of deaths & incapacitating injuries occur on just over **8%** of Austin's road miles



# 3. Develop Media Campaign



**WHERE TO?**  
**THE SIX TRAIN OR SIX FEET UNDER?**

The choice is simple.  
**Choose not to drink and drive.**



After you drink, think.

# 4. Continue the Vision Zero Task Force





# Safety Programs and Initiatives

## On-Going Programs

- Arterial Management - Pedestrian Hybrid Beacons, Rectangular Rapid Flashing Beacons, Accessible Pedestrian Signals
- Active Transportation - Bicycle and Pedestrian Network Implementation
- Traffic Management - Local Area Traffic Management Program
- APD - Impaired Driving Reduction Programs
- Public Works - Safe Routes to School Program
- Other ATD Programs - Get Home Safe Website, Free Overnight Parking, Safe Choice Reimbursement

40+ City Transportation Safety Initiatives

## Near-Term Action

- Mayors' Challenge for Safer People, Safer Streets
- Safety Improvement Plan Identifying the top 25 crash locations for immediate improvements. 5 intersections are funded for FY16.
- Pedestrian Safety Action Plan
- Vision Zero Task Force
- Fatality Review Board

## Long-Term Planning

Comprehensive Transportation Safety Plan

# US DOT's Mayors' Challenge for Safer People, Safer Streets

## Seven Challenges

**1**

Implement Complete Streets Approach

**2**

Identify and Address Barriers

**3**

Gather and Track Data

**4**

Use Context Sensitive Design

**5**

Build Bike/Ped Networks w/Resurfacing

**6**

Improve Safety Laws

**7**

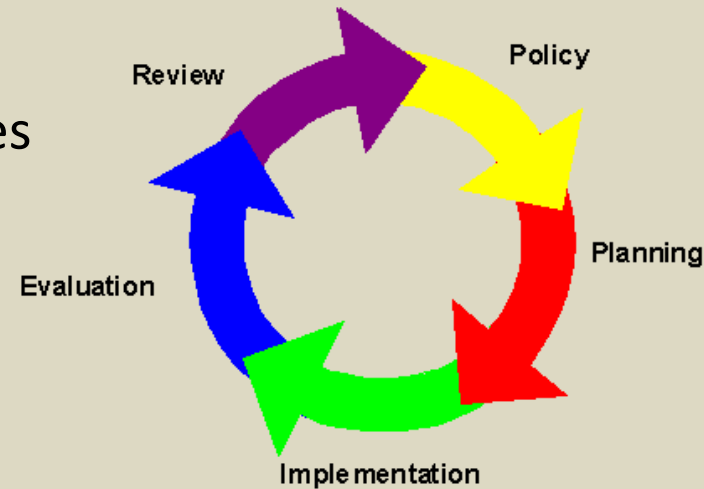
Educate and Enforce Safe Behavior



# Safety Improvement Plan

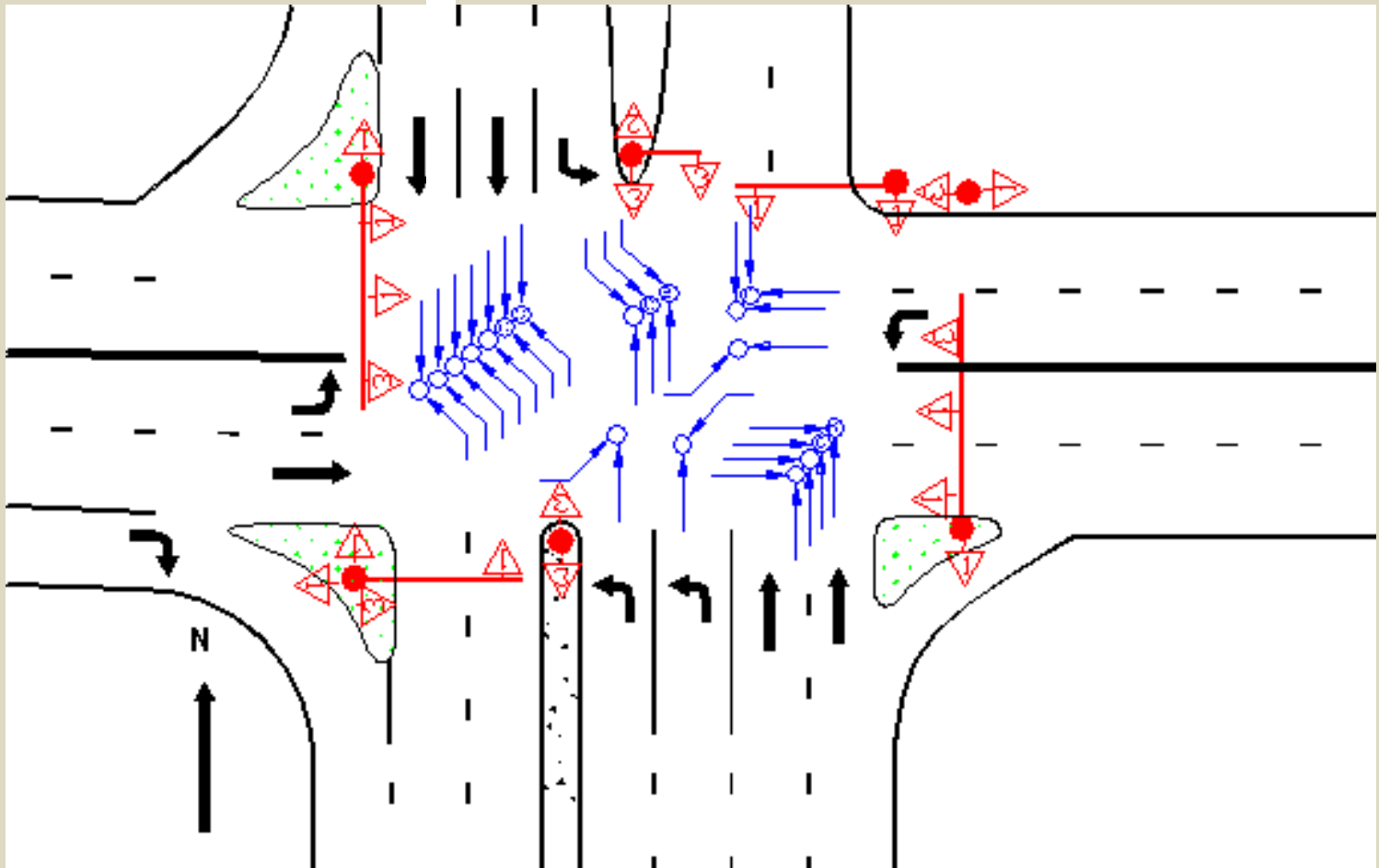
## Program Outline

- Rank and Map Collision Prone Locations
- Perform Detailed Engineering Safety Studies
  - Site Investigation
  - Collision Analysis
  - Geometric and Operational Analysis
  - Identify Deficiencies Contributing to Collisions
  - Recommend Improvements
- Develop Implementation Plans – Short, Medium and Long Terms
- Pursue/Identify Funding and Implement High Priority Improvements
- Evaluate/Check



# Safety Improvement Plan

## Collision Diagram




# Day 1 FY16: Slaughter/Manchaca

**kxan** IN-DEPTH. INVESTIGATIVE.

NEWS • WEATHER • TRAFFIC • INVESTIGATIONS • REPORT IT • MARKETPLACE • MORE •

## Dangerous South Austin intersection sees safety improvements

By Claire Ricke  
Published: October 2, 2015, 9:31 am | Updated: October 2, 2015, 12:03 pm



Deadly crash on Manchaca Road at Slaughter Lane

### Related Coverage

Austin Police report: Most deadly crashes happen after midnight

Deadly crash blocks Manchaca Road at W. Slaughter Lane

AUSTIN (KXAN) — Five of Austin's most dangerous intersections are receiving safety improvements this fiscal year. The year began Oct. 1, already bringing changes to the first deadly intersection at Slaughter Lane and Manchaca Road.

The leader of

South Austin **Patch** Find Your Patch ▾


Patch LocalStream Advertise With Us All Topics > Politics & Government ▾

## Safety Improvements Made To Dangerous South Austin Intersection

*The city made the changes on the first day of the new fiscal year.*

South Austin, TX

By STEPHANIE GASKELL (Patch Staff)  
October 2, 2015



29

# Pedestrian Safety Action Plan



## GOALS

- ☐ To reduce pedestrian fatalities and injuries by focusing on strategies that have the greatest crash reduction factors.
- ☐ To encourage walking by developing strategies for investing in pedestrian facilities and programs.

# Immediate Actions

- **Continue current initiatives** while working to expand education & enforcement
- **Expand DWI No Refusal**
- **Review policies & ordinances** related to DL, pedestrian, and insurance violations
- **Design and implement** safety improvements at Top 5 crash locations.

# Analysis & Planning

- Present **Draft Vision Zero Action Plan** to Pedestrian Advisory Council & other groups
- Request Council action on **Vision Zero Action Plan**
- **Expand analysis** of high crash locations
- Complete **Pedestrian Safety Action Plan**
- Launch **Comprehensive Transportation Safety Plan**