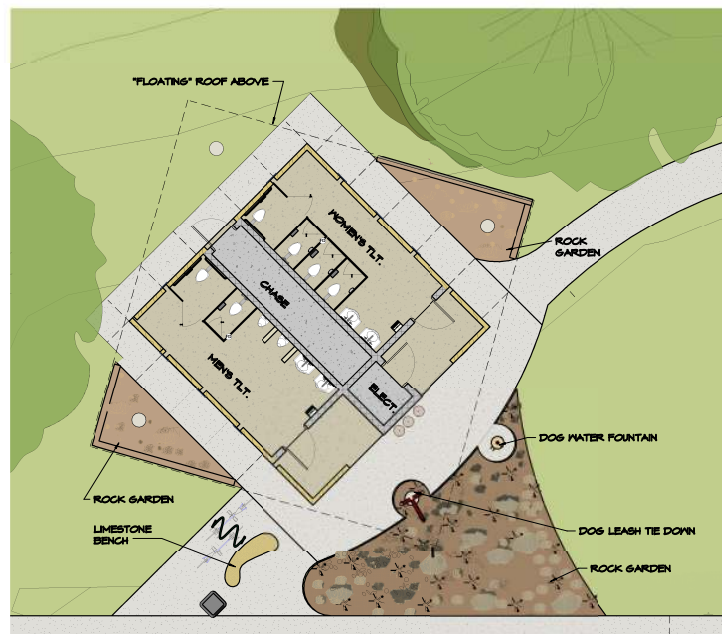




VIEW FROM HILLSIDE THEATRE



VIEW FROM TRAILHEAD



FLOOR PLAN
3/16" = 1'-0"





NOTES:

1. HEAVY EQUIPMENT WITHIN THE 1/2 CRITICAL ROOT ZONE IS PROHIBITED AND ANY WORK REQUIRED WITHIN THIS ZONE SHALL BE CONDUCTED BY HAND. ANY EXISTING TREES WITHIN THE FULL CRITICAL ROOT ZONE OF ANY PLANT DISTRIBUTION, MATS OR OTHER SOIL COMPACTION PROTECTION SHALL BE PROVIDED.
2. ANY DEMOLITION WORK THAT IS TO BE DONE WITHIN THE 1/2 CRITICAL ROOT ZONE SHALL BE CONDUCTED WITHIN THE 1/2 CRITICAL ROOT ZONE. ANY EXISTING TREES WITHIN THE 1/2 CRITICAL ROOT ZONE SHALL BE PROTECTED BY INSTALLING A FENCE WHICH SHALL BE INSTALLED IMMEDIATELY AFTER WORK IS CONCLUDED PER CO STANDARD SPECIFICATIONS.

GENERAL NOTES:

1. A PRE-CONSTRUCTION MEETING WITH THE ENVIRONMENTAL INSPECTOR IS REQUIRED PRIOR TO ANY SITE DISTURBANCE.

ZILKER METRO PARK TRAILHEAD RESTROOM
for the CITY OF AUSTIN PARKS & RECREATION DEPARTMENT

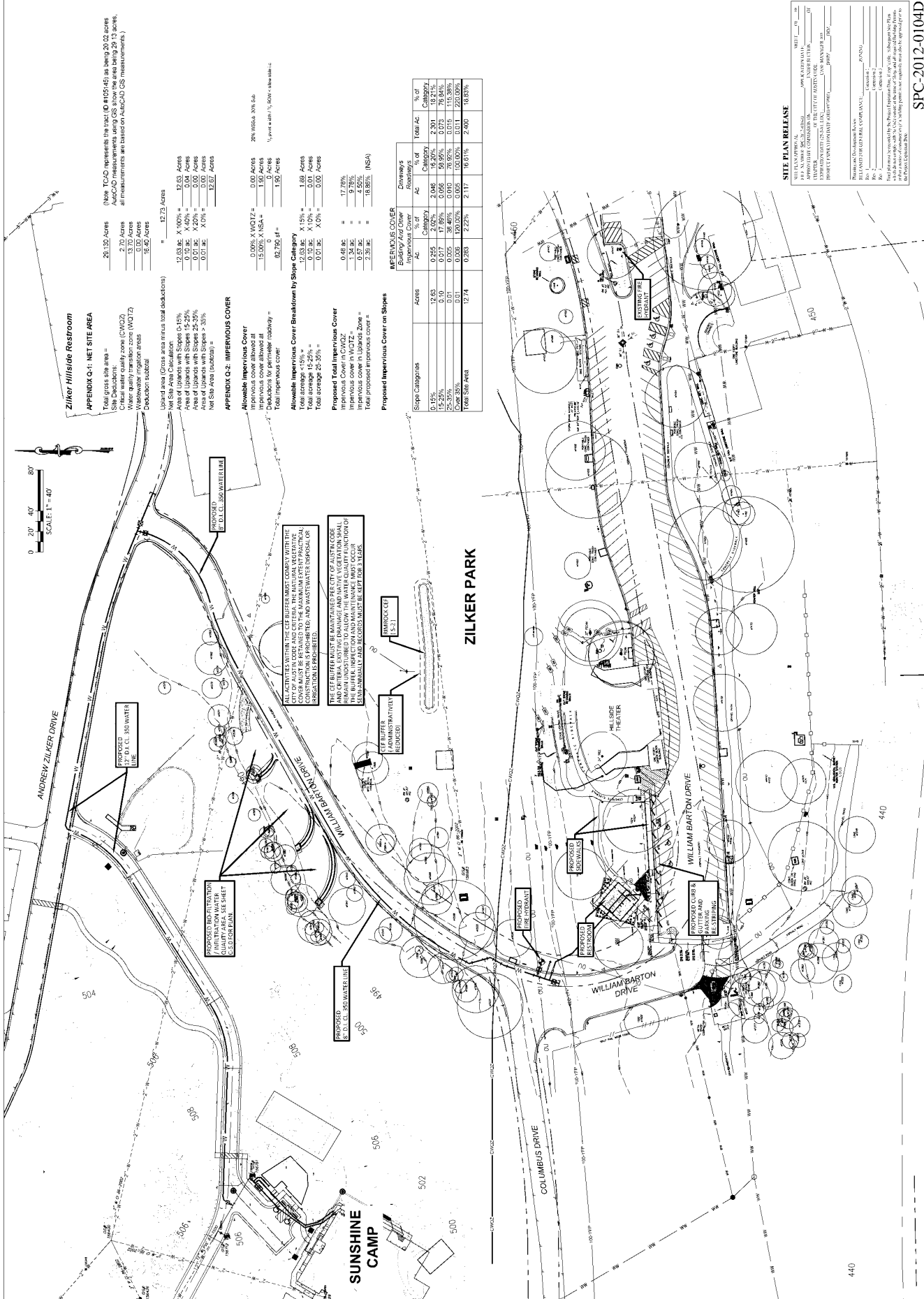
DATE DATE:	10/08/15
NAME EPI:	
RT	
RECKED EP:	TFC
ISSIONS	
D. DATE	REMARKS
MET	C-1.2
3 OF 19	
E NAME:	
SUBJECT NUMBER:	COCCOCHIAI

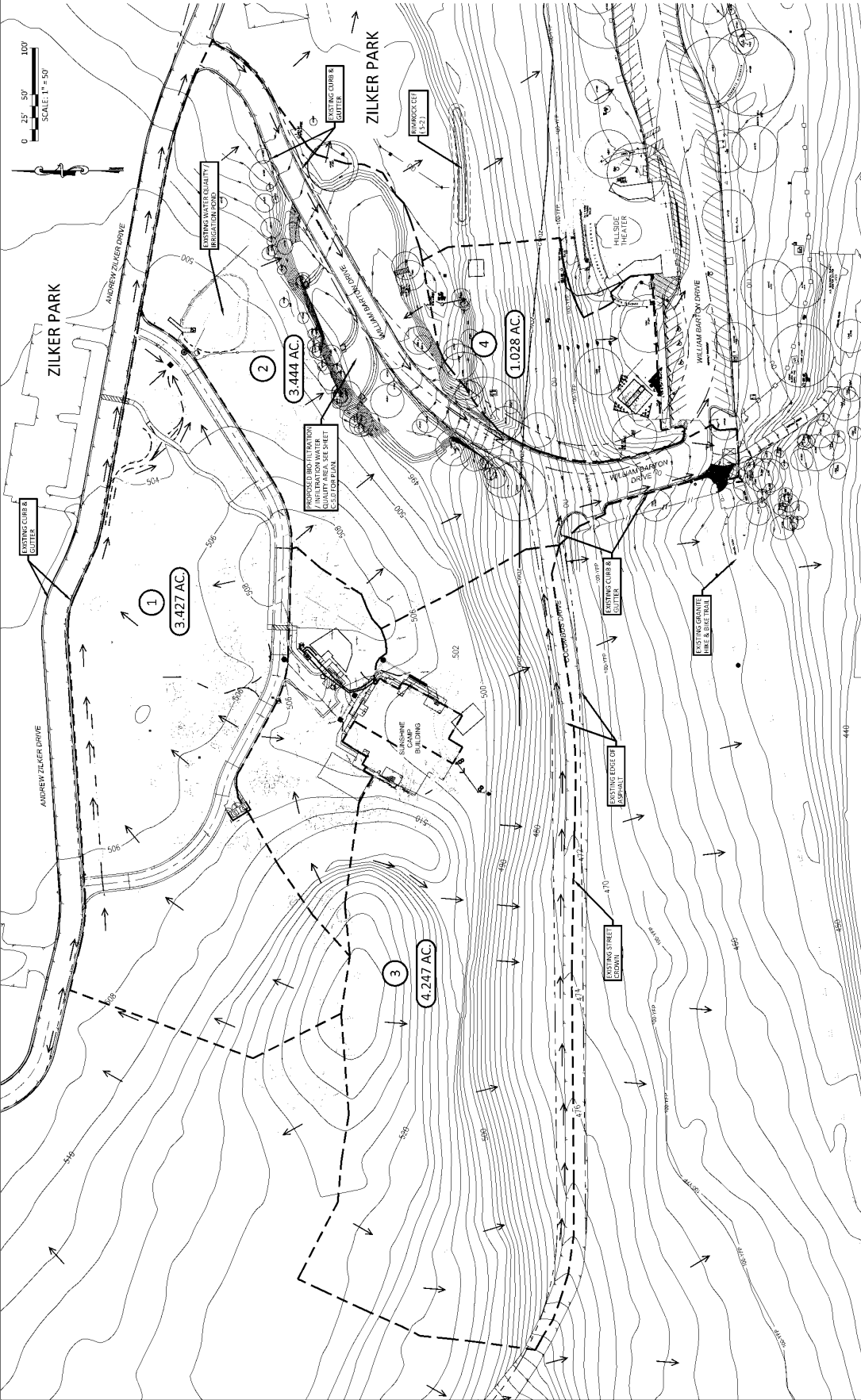
SITE PLAN RELEASE

[illegible]

SPC-2012-0104D

PROJECT NUMBER
PROJECT #133402





SITE PLAN RELEASE

DATE	10/08/15	
DRAWN BY	RT	
CHECKED BY	JFC	
REVISIONS		
NO.	DATE	REVISIONS
1		
2		
3		
4		
5		
6		
7		
8		
9		
10		
11		
12		
13		
14		
15		
16		
17		
18		
19		
20		
21		
22		
23		
24		
25		
26		
27		
28		
29		
30		
31		
32		
33		
34		
35		
36		
37		
38		
39		
40		
41		
42		
43		
44		
45		
46		
47		
48		
49		
50		
51		
52		
53		
54		
55		
56		
57		
58		
59		
60		
61		
62		
63		
64		
65		
66		
67		
68		
69		
70		
71		
72		
73		
74		
75		
76		
77		
78		
79		
80		
81		
82		
83		
84		
85		
86		
87		
88		
89		
90		
91		
92		
93		
94		
95		
96		
97		
98		
99		
100		

SPC-2012-0104D
PROJECT #132402

CHAMBERS & PARTNERS ENGINEERING, LLC
4319 JAMES CASEY STREET, SUITE 100
ALTO, TEXAS 77009
TEL: 281.408.1100
FAX: 281.408.1101
WWW.CHAMBERSANDPARTNERS.COM
TEKAS REGISTRATION NO. 1-17013

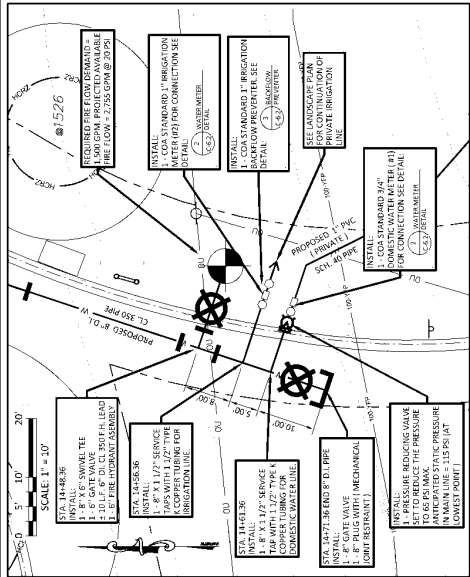
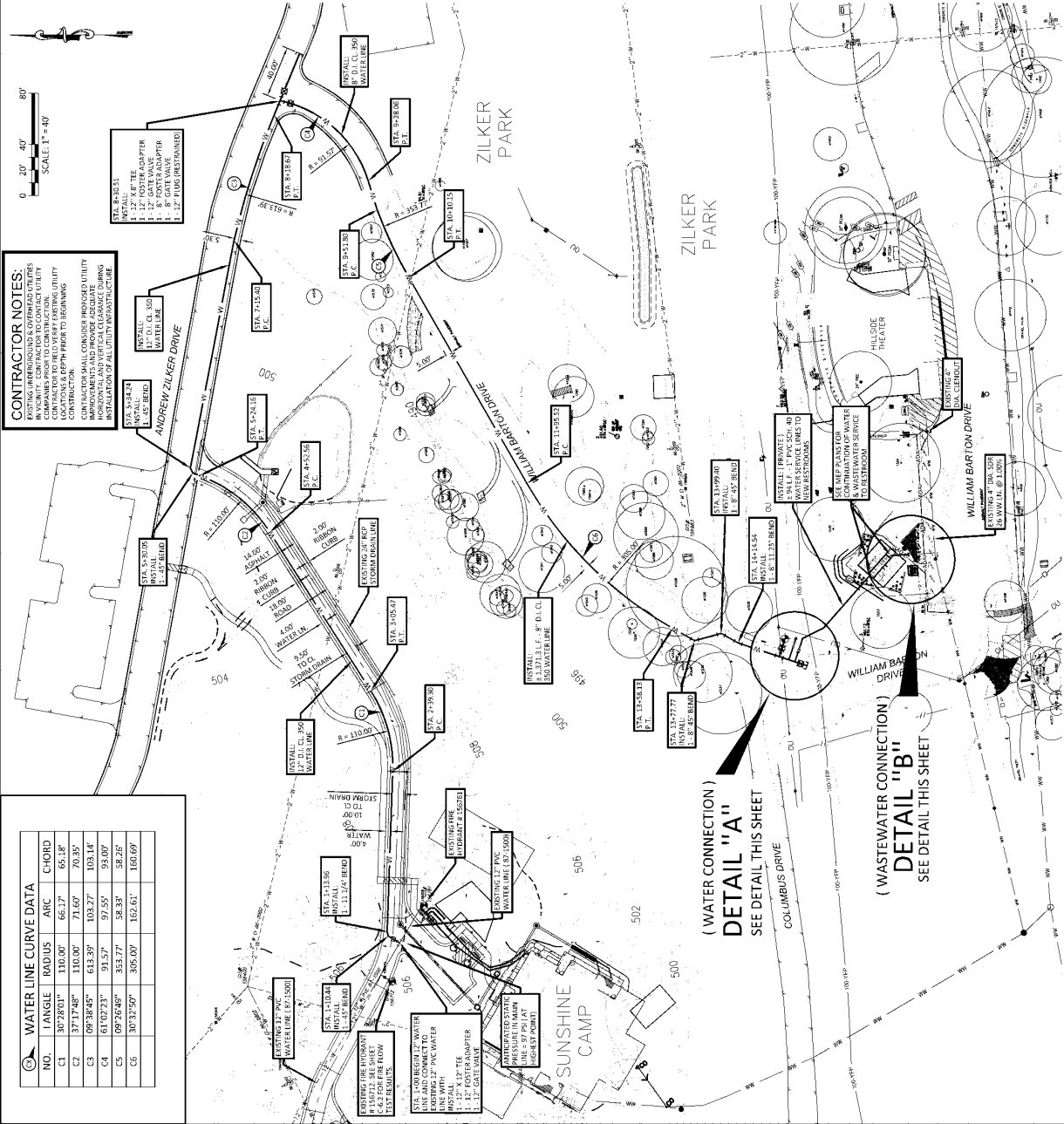


ZILKER METRO PARK TRAILHEAD RESTROOM
for the CITY OF AUSTIN PARKS & RECREATION DEPARTMENT
EXISTING DRAINAGE MAP

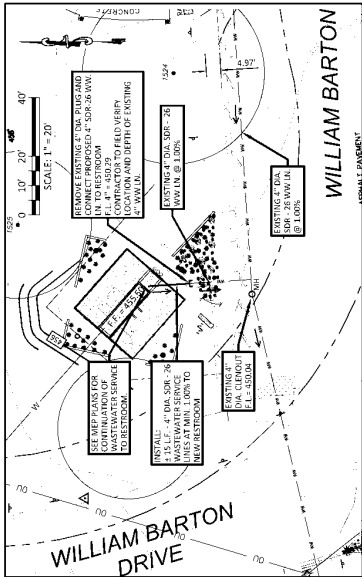
DATE	10/08/15	
DRAWN BY	RT	
CHECKED BY	JFC	
REVISIONS		
NO.	DATE	REVISIONS
1		
2		
3		
4		
5		
6		
7		
8		
9		
10		
11		
12		
13		
14		
15		
16		
17		
18		
19		
20		
21		
22		
23		
24		
25		
26		
27		
28		
29		
30		
31		
32		
33		
34		
35		
36		
37		
38		
39		
40		
41		
42		
43		
44		
45		
46		
47		
48		
49		
50		
51		
52		
53		
54		
55		
56		
57		
58		
59		
60		
61		
62		
63		
64		
65		
66		
67		
68		
69		
70		
71		
72		
73		
74		
75		
76		
77		
78		
79		
80		
81		
82		
83		
84		
85		
86		
87		
88		
89		
90		
91		
92		
93		
94		
95		
96		
97		
98		
99		
100		

WATER LINE CURVE DATA				
NO.	ANGLE	RADIUS	ARC	CHORD
C1	30°28'01"	110.00'	66.17'	65.18'
C2	37°17'48"	110.00'	71.69'	70.95'
C3	09°38'45"	613.59'	103.27'	103.14'
C4	61°02'23"	91.57'	97.55'	93.00'
C5	09°26'49"	353.27'	58.33'	58.30'
C6	30°32'59"	305.00'	165.61'	160.69'

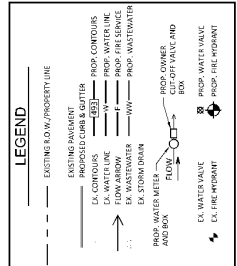
CONTRACTOR NOTES:
 EXISTING UNDERGROUND AND OVERHEAD UTILITIES SHALL BE MAINTAINED AND PROTECTED BY THE CONTRACTOR TO REMAIN EXISTING UTILITIES COMPANIES PRIOR TO CONSTRUCTION.
 CONTRACTOR SHALL CONSIDER PROPOSED UTILITY INSTALLATION AND VERTICAL CLEARANCE DURING CONSTRUCTION.
 CONTRACTOR SHALL CONSIDER PROPOSED UTILITY INSTALLATION AND VERTICAL CLEARANCE DURING CONSTRUCTION.



DETAIL "A" (WATER)
 SCALE: 1" = 20'



DETAIL "B" (WASTEWATER)
 SCALE: 1" = 20'



SITE PLAN RELEASE

APPROVED FOR CONSTRUCTION: _____ DATE: _____

PROJECT MANAGER: _____

PROJECT ENGINEER: _____

PROJECT SURVEYOR: _____

PROJECT DESIGNER: _____

PROJECT CHECKER: _____

PROJECT REVIEWER: _____

PROJECT APPROVAL: _____

PROJECT RELEASE: _____

SPC-2012-01040D

for the CITY OF AUSTIN PARKS & RECREATION DEPARTMENT
 ZILKER METRO PARK TRAILHEAD RESTROOM
 WATER AND WASTEWATER PLAN

DATE: 10/08/15
 DRAWN BY: RT
 CHECKED BY: JFC
 REVISIONS:
 NO. DATE REVISION
 1 10/08/15
 2 12/19/15
 3 12/19/15
 4 12/19/15
 5 12/19/15
 6 12/19/15
 7 12/19/15
 8 12/19/15
 9 12/19/15
 10 12/19/15
 11 12/19/15
 12 12/19/15
 13 12/19/15
 14 12/19/15
 15 12/19/15
 16 12/19/15
 17 12/19/15
 18 12/19/15
 19 12/19/15
 20 12/19/15
 21 12/19/15
 22 12/19/15
 23 12/19/15
 24 12/19/15
 25 12/19/15
 26 12/19/15
 27 12/19/15
 28 12/19/15
 29 12/19/15
 30 12/19/15
 31 12/19/15
 32 12/19/15
 33 12/19/15
 34 12/19/15
 35 12/19/15
 36 12/19/15
 37 12/19/15
 38 12/19/15
 39 12/19/15
 40 12/19/15
 41 12/19/15
 42 12/19/15
 43 12/19/15
 44 12/19/15
 45 12/19/15
 46 12/19/15
 47 12/19/15
 48 12/19/15
 49 12/19/15
 50 12/19/15
 51 12/19/15
 52 12/19/15
 53 12/19/15
 54 12/19/15
 55 12/19/15
 56 12/19/15
 57 12/19/15
 58 12/19/15
 59 12/19/15
 60 12/19/15
 61 12/19/15
 62 12/19/15
 63 12/19/15
 64 12/19/15
 65 12/19/15
 66 12/19/15
 67 12/19/15
 68 12/19/15
 69 12/19/15
 70 12/19/15
 71 12/19/15
 72 12/19/15
 73 12/19/15
 74 12/19/15
 75 12/19/15
 76 12/19/15
 77 12/19/15
 78 12/19/15
 79 12/19/15
 80 12/19/15
 81 12/19/15
 82 12/19/15
 83 12/19/15
 84 12/19/15
 85 12/19/15
 86 12/19/15
 87 12/19/15
 88 12/19/15
 89 12/19/15
 90 12/19/15
 91 12/19/15
 92 12/19/15
 93 12/19/15
 94 12/19/15
 95 12/19/15
 96 12/19/15
 97 12/19/15
 98 12/19/15
 99 12/19/15
 100 12/19/15

PROJECT #132402