



---

# Parks and Recreation Board

Marty Stump, Parks and Recreation Department

David Taylor, Public Works

March 22, 2016

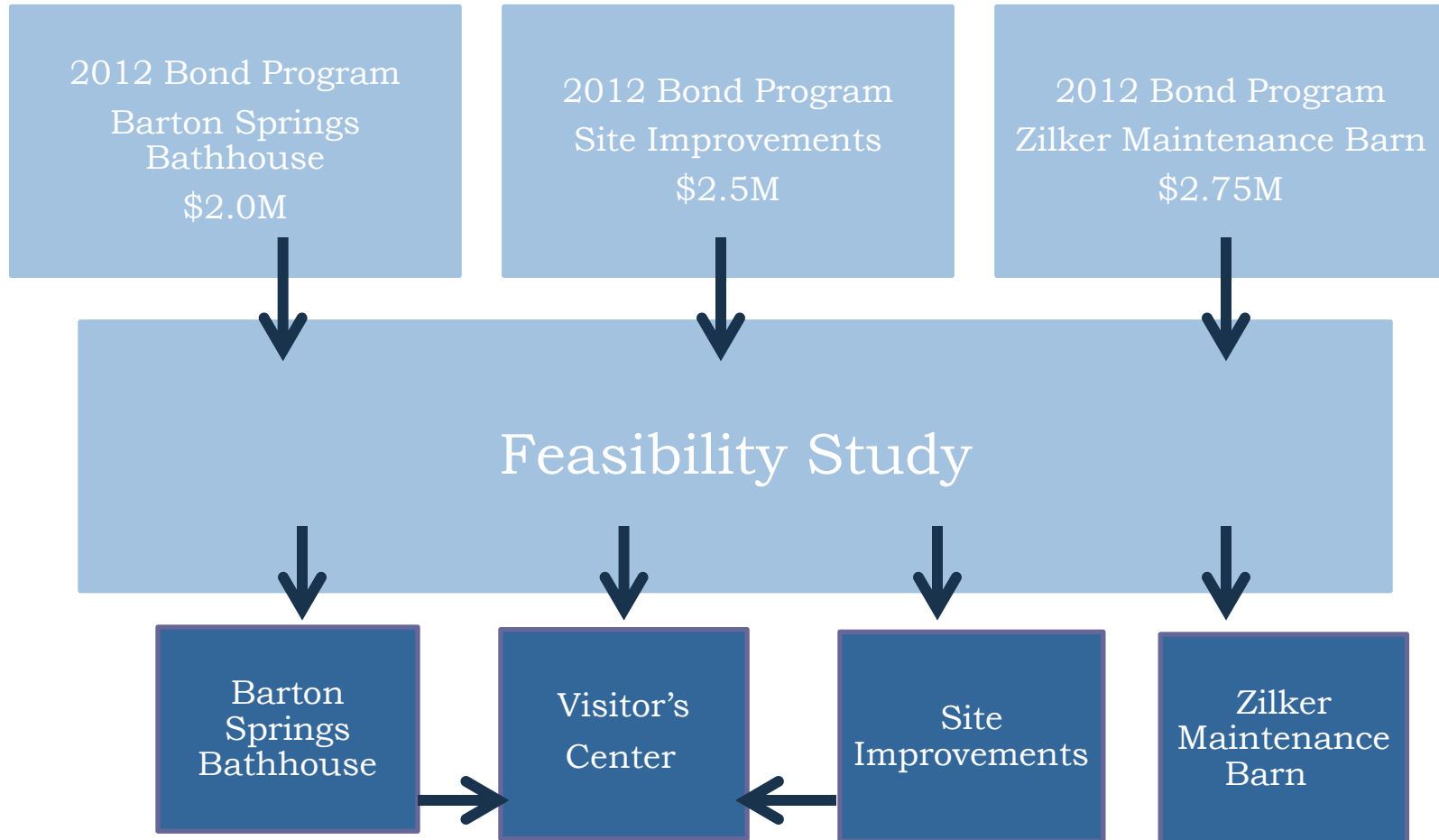
---

PARD and Public Works

Zilker Bathhouse Zone Feasibility Study



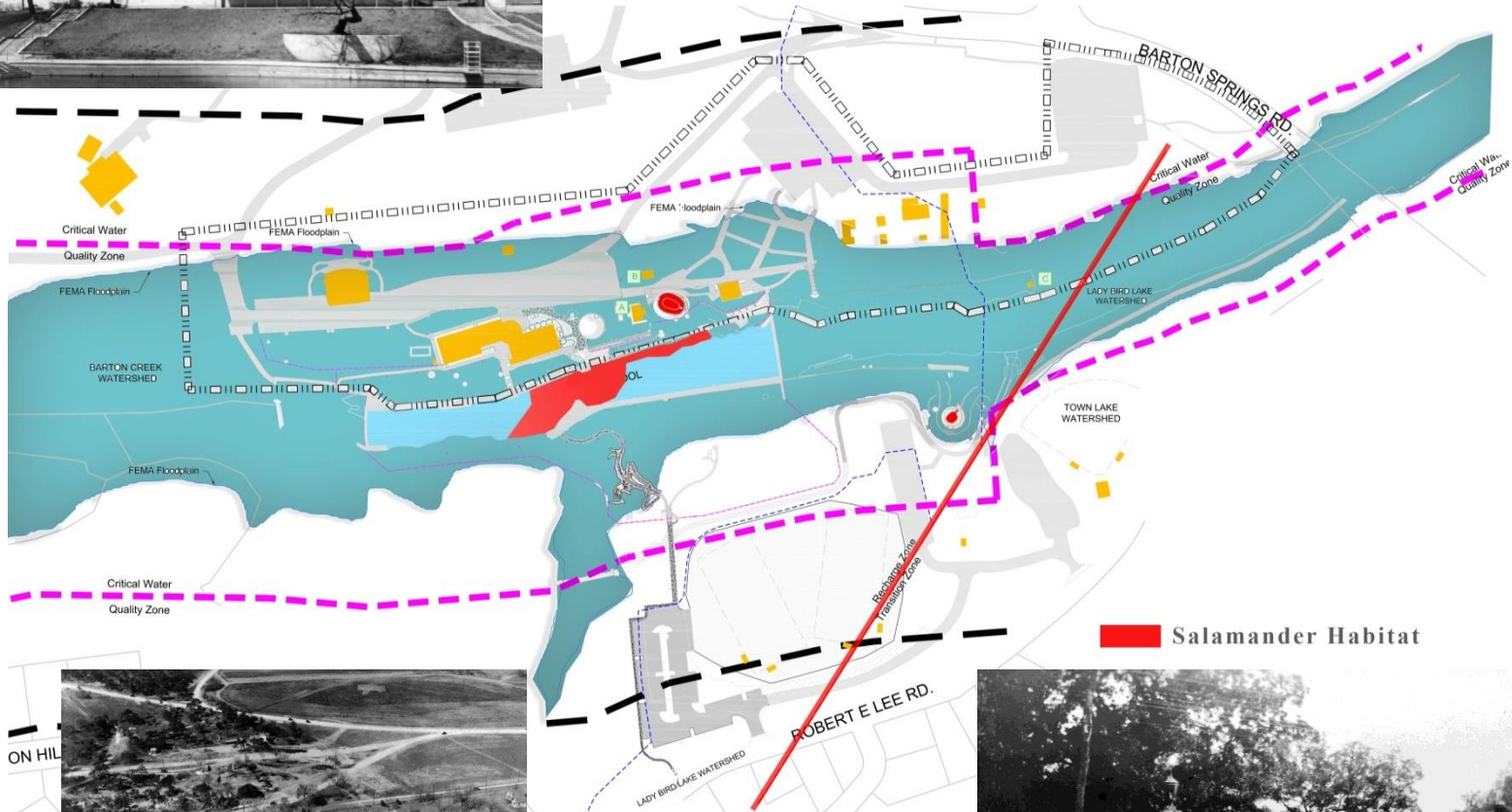
# Overview





- Following 2008 Barton Springs Master Plan
- Assess facilities on north side of Barton Springs Pool from trailhead through Pecan Grove area
- Review developmental constraints
- Identify critical program needs
- Inform stakeholders and engage public to develop priorities
- Discuss rehabilitation of the historical facilities with particular attention to the Bathhouse

# CONSTRAINTS

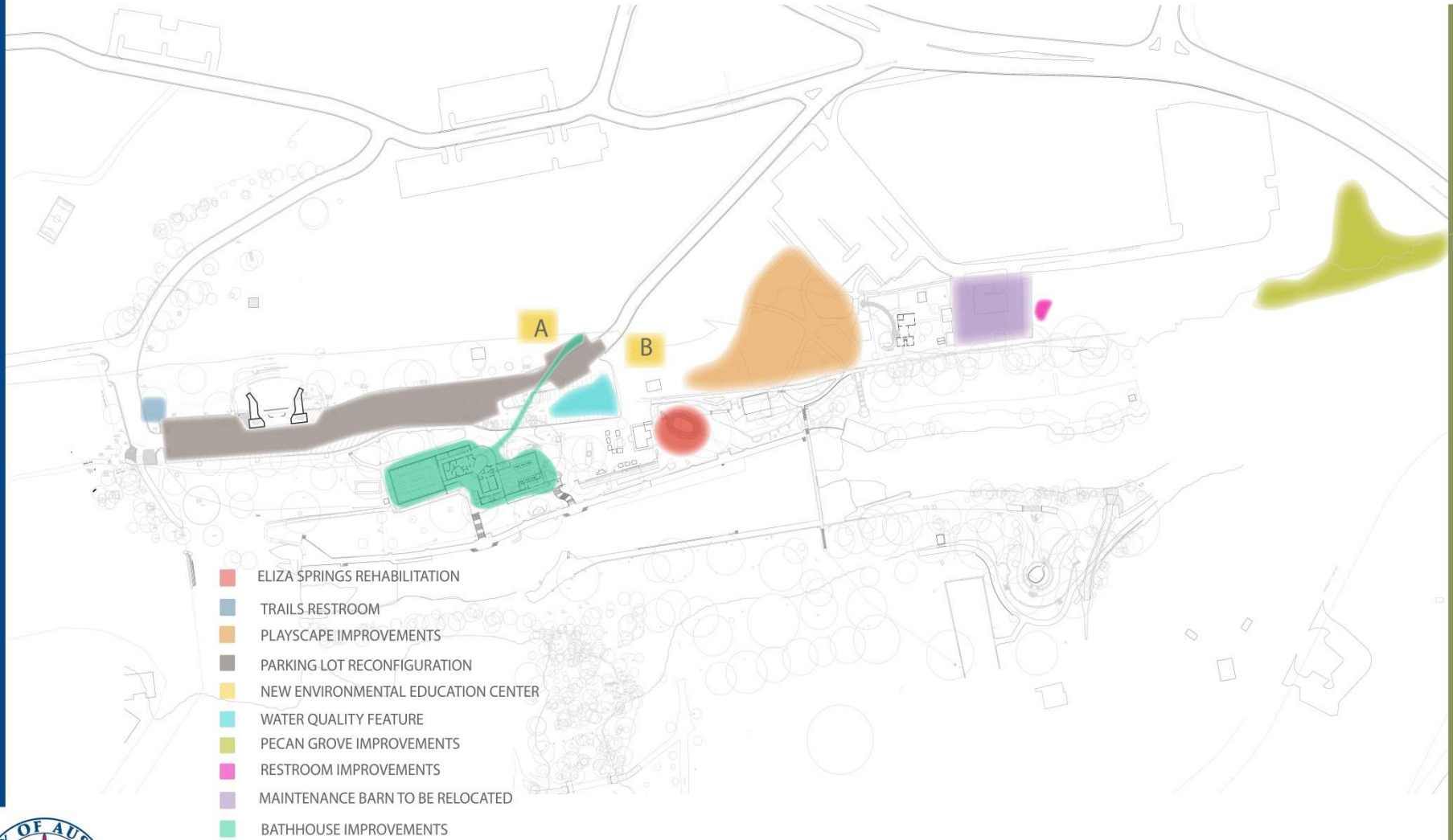




- Proceed with Planned Projects
  - Parking Meters, Eliza Daylighting, Trailhead Restroom, and Maintenance Barn Relocation and Removal
- Site Improvements Package
  - Parking Lot Reconfiguration, Replacement Playscape, Circulation improvements, Amenities Replacement
- Phased Bathhouse Rehabilitation
  - Access and Plumbing system replacement
  - New Interpretive Center; Relocate Aquatics
  - Restore Rotunda and Dressing Areas



# SITE PLAN POTENTIAL PROJECTS



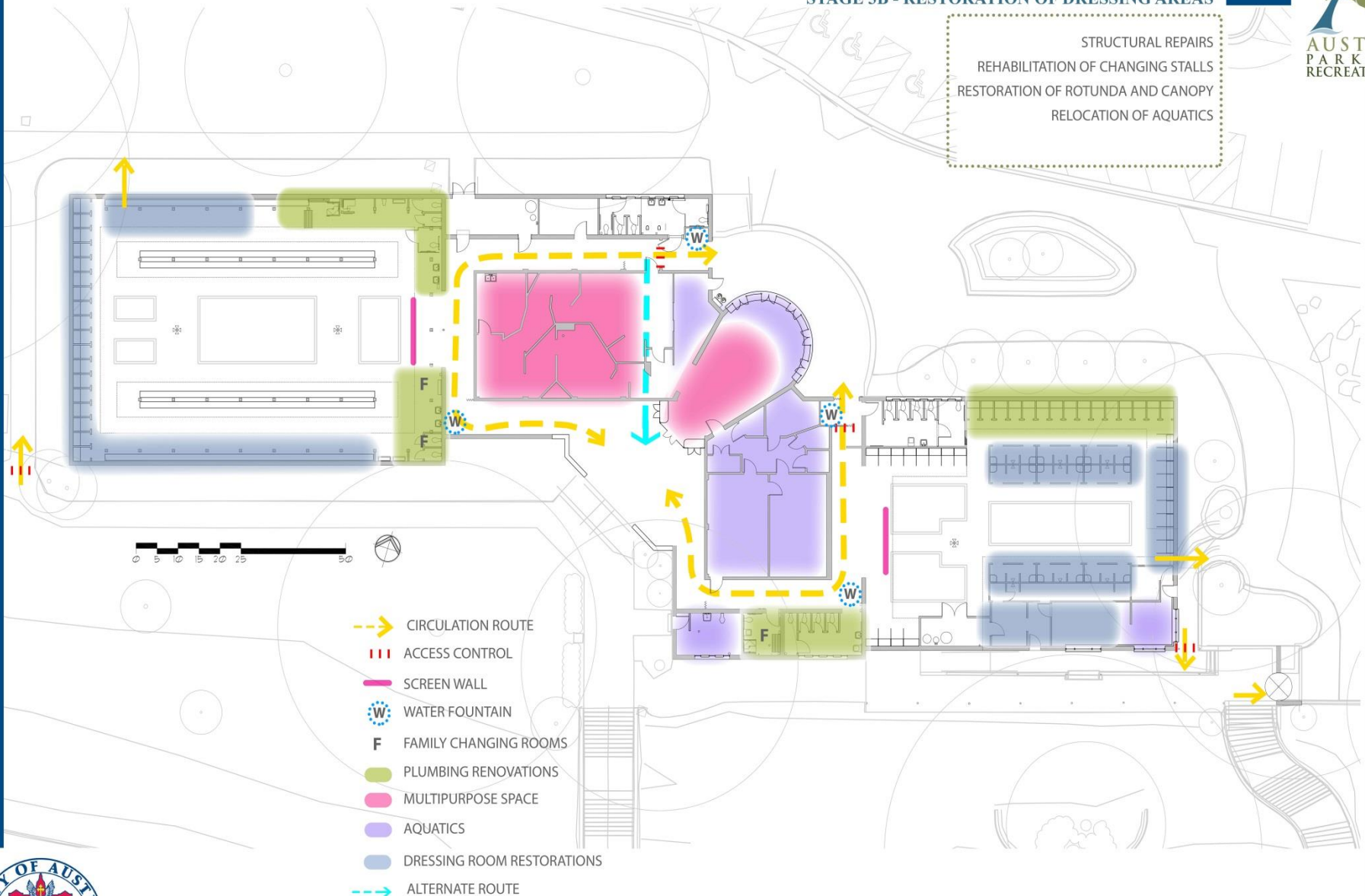
## ZILKER PARK IMPROVEMENTS AT THE BATHHOUSE ZONE



# BATHHOUSE REHABILITATION

## STAGE 3B - RESTORATION OF DRESSING AREAS

STRUCTURAL REPAIRS  
REHABILITATION OF CHANGING STALLS  
RESTORATION OF ROTUNDA AND CANOPY  
RELOCATION OF AQUATICS



## ZILKER PARK IMPROVEMENTS AT THE BATHHOUSE ZONE

