

XYZ ATLAS

The Hedonic Map of Austin
Mapping Shared Experiences Through Art
Zilker Park Exhibition Proposal and Artwork Donation

Zilker Park

2100 Barton Springs Rd., Austin, Texas

Zilker Metropolitan Park is considered "Austin's most loved park." This 351-acre park is home to a variety of recreation opportunities and special events for everyone.

Enjoy a ride on the Zilker Zephyr miniature train or paddle a canoe on Lady Bird Lake. Play on the large playscape, enjoy the trails and large full-service picnic area, six of which are reservable. For the swimmer, Zilker Park offers Barton Springs Pool, a natural spring-fed pool with a year-round temperature of 68 degrees. The sports enthusiast will enjoy the sand volleyball courts, a nine-hole disc golf course, nine soccer fields, one rugby field and two multi-use fields.

A parking fee is charged March through September on the weekends and for most special events.

- P Parking
- PA Picnic Areas
- H Hiking Trail Head
- T Telephone
- R Restrooms
- HA Handicapped Access
- C Concession Stand
- S Swimming Pool
- G Gift Shop
- B Bus Stop
- V Scenic View
- Z Zilker Zephyr Train Station
- P Playscape
- D Hike and Bike Trail
- C Canoe Rental
- O Rowing Center

In 1913, A.J. Zilker deeded the thirty-five acres surrounding Barton Springs to the City of Austin for \$100,000. In 1932, Zilker agreed to deed an additional 323 acres, if the city would pay \$200,000 to the public school system. This action was approved in an election despite the economic depression of the 1930's. The land was developed into Zilker Park.

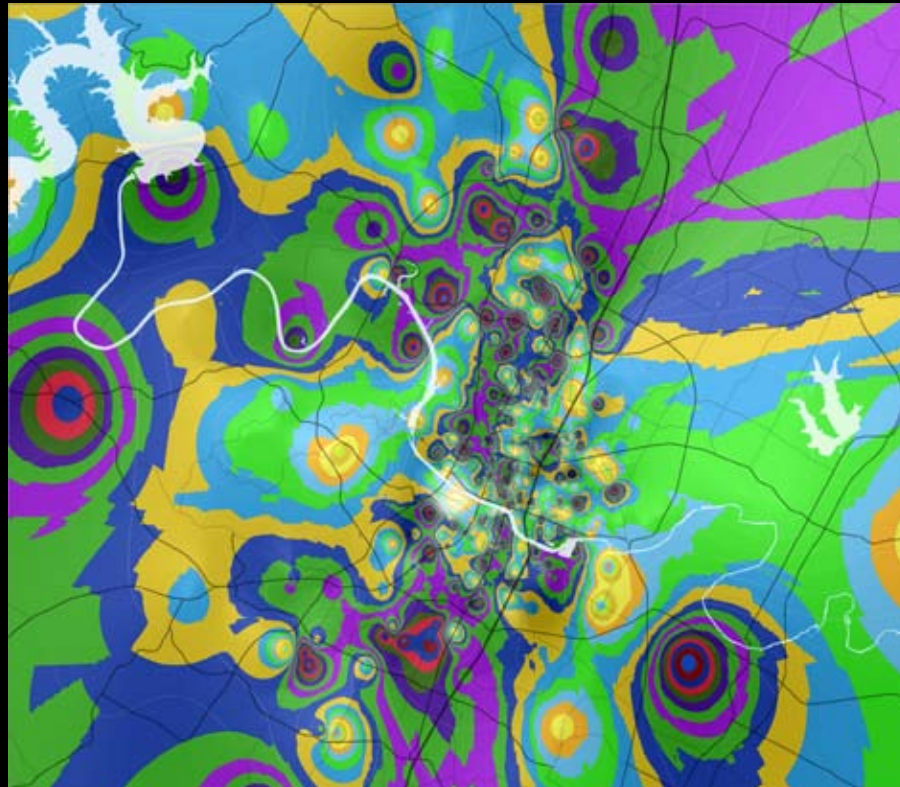
Austin Parks and Recreation
A City Within A Park
200 South Lamar Blvd., Austin, TX 78704
512-974-6700
www.ci.austin.tx.us/parks

The purpose of the Parks and Recreation Department is to provide, protect and preserve a park system that promotes quality recreational, cultural and historic amenities for the Austin community.

WHY ZILKER PARK and BARTON SPRINGS?

In 2013, the artist created a 20 question survey about where people had emotional experiences in Austin that created a connection to place.

The anonymous answers revealed in a GIS map that Zilker Park and Barton Springs is the high point of collective experience in Austin. The survey data will be used to create art with people's answers.



EXHIBITION PROPOSAL FOR BARTON SPRINGS AND ZILKER PARK 2016

PHASE ONE

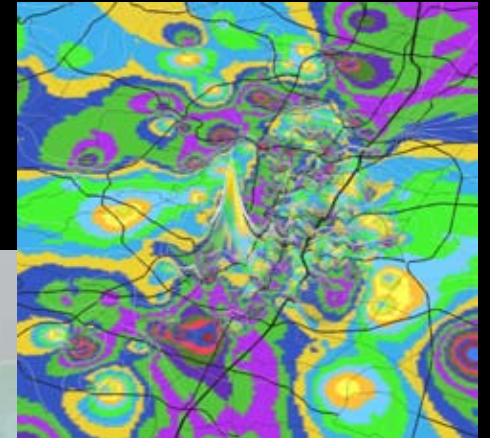
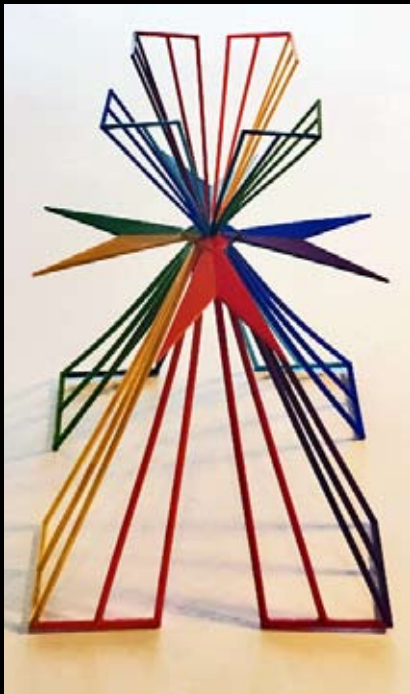
Funded through Cultural Arts Division Core Funding of Fistera Projects

which is a 50% matching grant,
and requires an Artwork Donation Agreement approval
and PARD event photography and videography approval.

May - August 2016

Beverly S. Sheffield Gallery at Barton Spring Pool

2D and 3D artworks about the project will be on display indoors in the Beverly S. Sheffield Gallery at Barton Springs Pool Bathhouse. Artworks include 3D printed objects, handmade drawing, digital maps, and data visualizations.



May 14-15, May 21-22, 2016

The *X Vortex Location Marker* sculpture is 8' tall painted aluminum that bolts to a 18"x18" steel plate. It sits outdoors, north of the Barton Springs Bathhouse ONLY during events with a volunteer to be sure no one climbs upon it. It has previously exhibited in Austin Parks and public events.



EXHIBITION PROPOSAL FOR BARTON SPRINGS AND ZILKER PARK 2016

PHASE TWO

Funded through Cultural Arts Division Core Funding of Fistera Projects

Which is a 50% matching grant,
and Requires an Artwork Donation Agreement Approval,

and needs PARD Special Events approval
of materials, dates and location,
and PARD event photography and videography approval.

May 21 and 22

Interactive Scale Mapping Event - A large outdoor map of Austin will be created on the green space at Zilker Park, drawn in field chalk or line tape.

“Zilker Hillside,” west of the Theater and south of the Rock Garden, working around existing public uses.



EXHIBITION PROPOSAL FOR BARTON SPRINGS AND ZILKER PARK 2016

PHASE THREE UNFUNDED

Would Require an Artwork Donation Agreement Approval,

Plus a donated maintenance budget
a donated installation crew,
an installation and site plan,
and a maintenance manual.

The mechanical sculpture will be refurbished with new parts and a safety mechanism to prevent injury during the sculpture's closing. This will occur after deinstall from the Elisabet Ney Museum and before installation at the Zilker Botanical Garden. That is a planned part of the fundraising goal.

Spring 2016

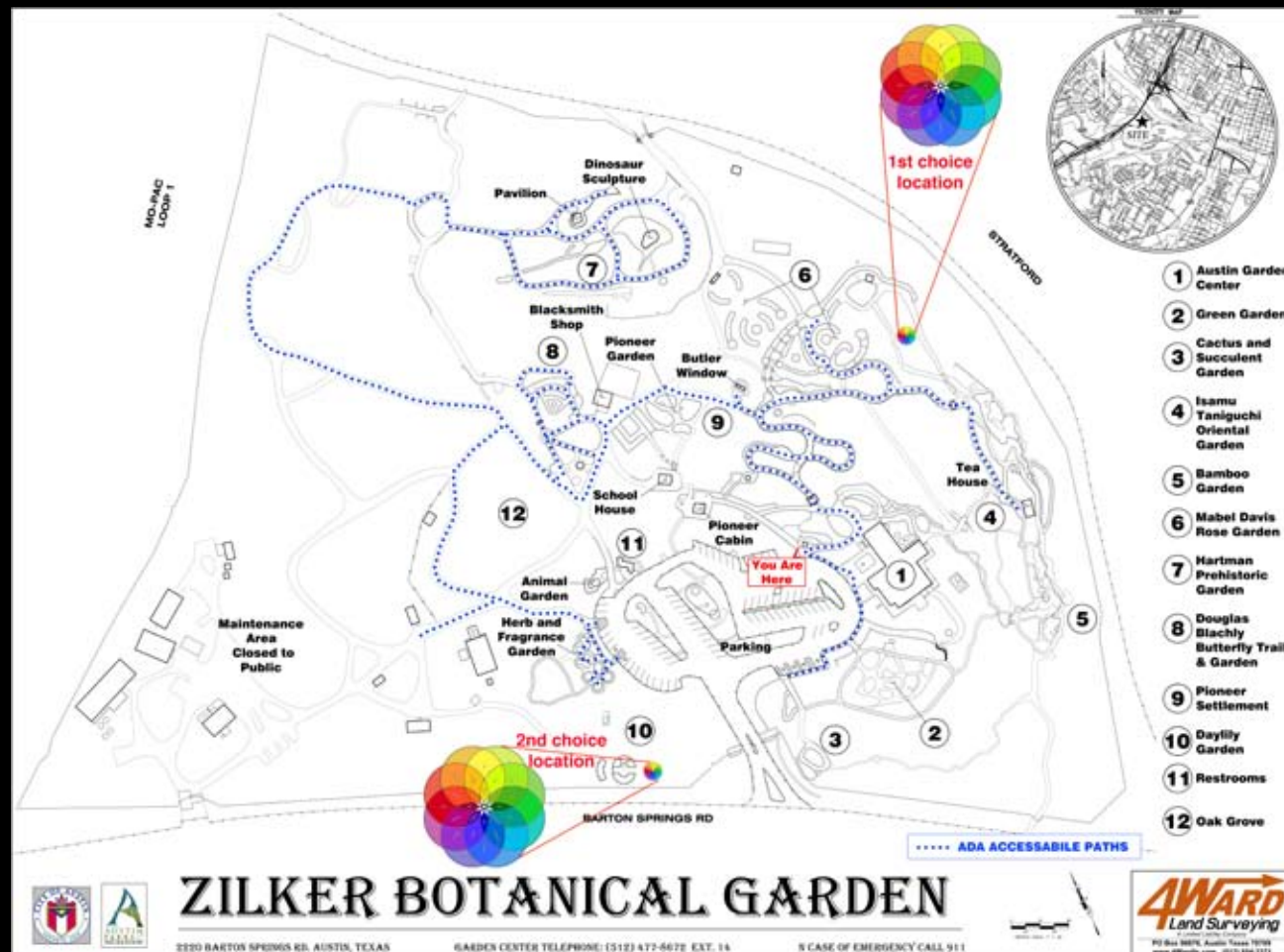
Permanent Artwork Donation - *Dance of the Cosmos*, a kinetic solar powered sculpture will be given as a gift to the City and to the Zilker Botanical Garden. The artwork is a visualization of emotional wholeness, inspired by a psychological theory and a Tibetan Lotus Mandala.



Spring 2016

Dance of the Cosmos could be sited in either of two locations identified by the Zilker Botanical Garden staff.

There will need to be a poured-in-place concrete foundation 27"x27"x27" for the steel sculpture to bolt to, and electrical lines run for the solar powered electricity, before the concrete tiles are moved into place on level ground. That is a planned part of the fundraising goal.



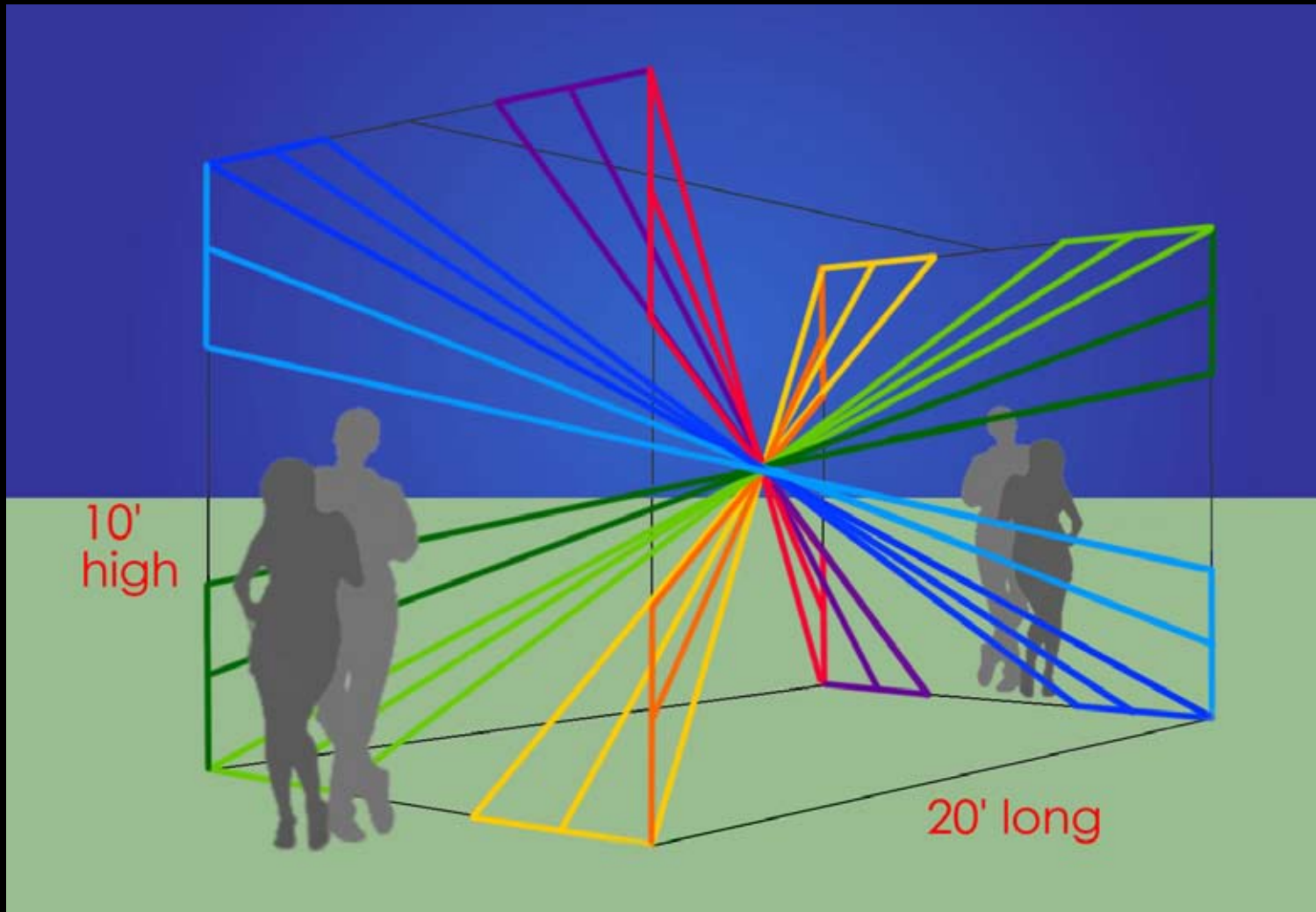
EXHIBITION PROPOSAL FOR BARTON SPRINGS AND ZILKER PARK 2016

PHASE FOUR UNFUNDED

Requires an Artwork Donation Agreement Approval
and PARD event photography and videography approval.

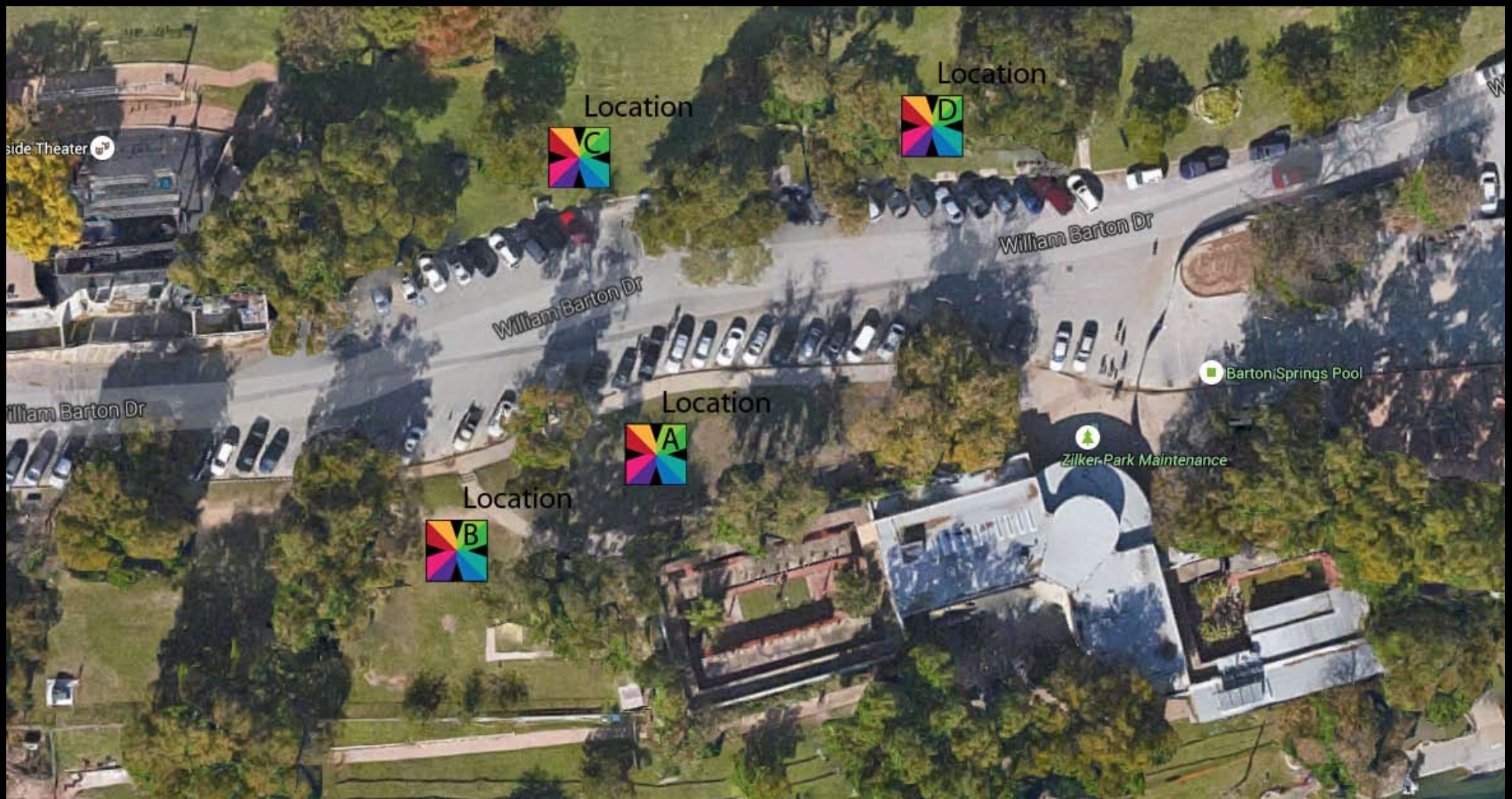
May 14-15 and May 21-22, 2016

The *X Vortex Horizontal* will be made of a modular steel frame that bolts together, with LED tubular acrylic lights to create the “X” shapes. The lights respond to the viewer’s location through motion sensors. It can sit outdoors, north of the Barton Springs Bathhouse.



May 14-15, May 21-22, 2016

The *X Vortex* sculptures could go in various locations north of the Barton Springs Bathhouse and east of the Zilker Hillside Theater.



The project is sponsored by the City of Austin's Cultural Arts Division.

It is a collaboration with the Parks and Recreation Department's Museums & Cultural Programs.

The "Public Sentiment Campaign" Location markers were funded by TEMPO through Art in Public Places.



CONTACT

Jennifer Chenoweth

512-477-0568

info@fisterrastudio.com

The XYZ ATLAS through Fisterra Projects is a 501(c)(3) nonprofit, donations are fully tax deductible.