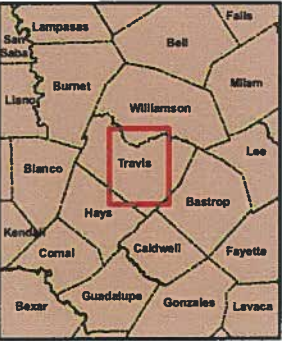
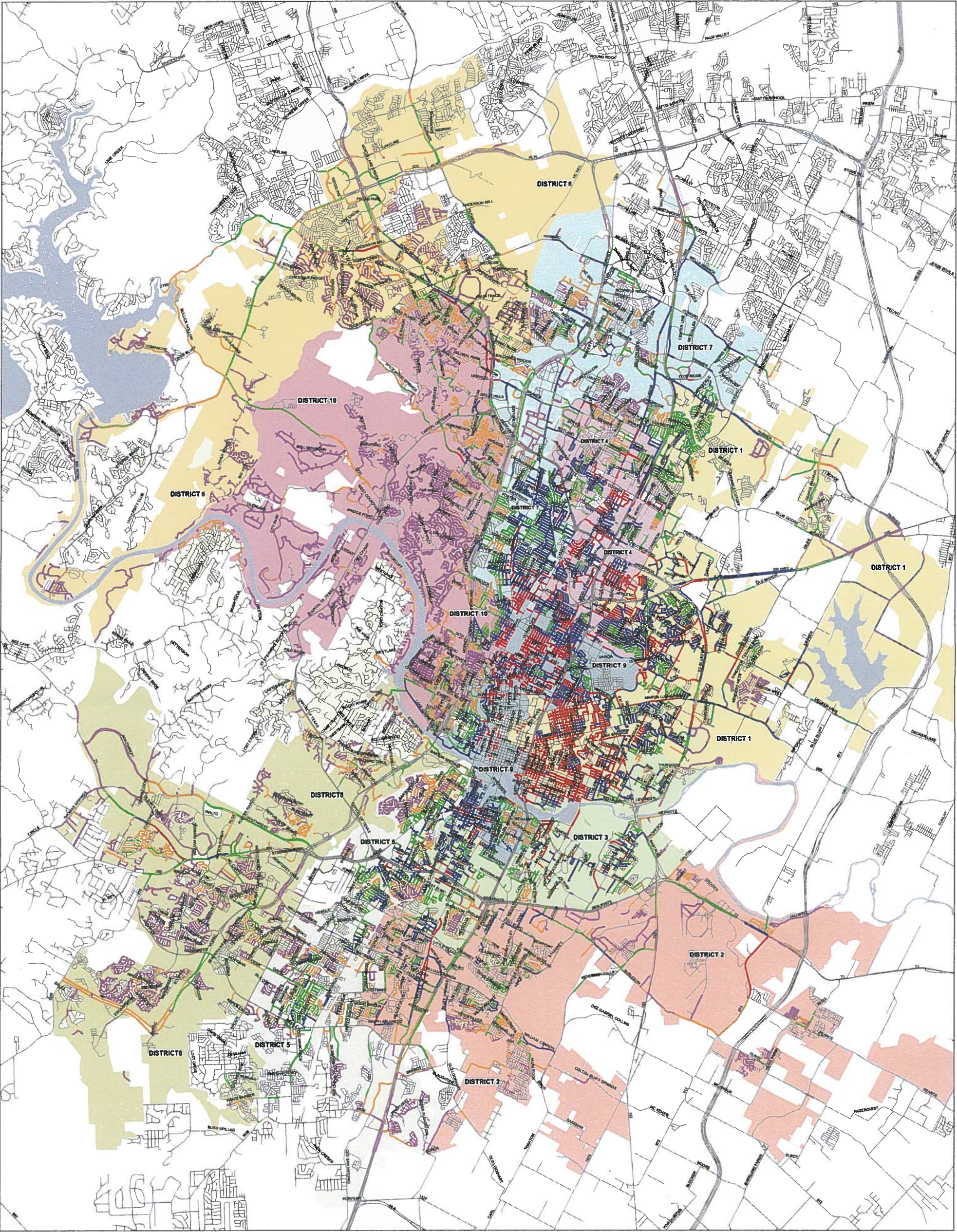




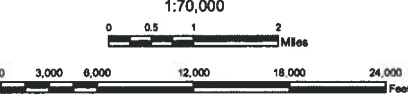
City of Austin Pedestrian Plan
Absent Sidewalk Scoring Results



HDR makes no representations or warranties regarding accuracy or completeness of the information depicted on this map or data from which it was produced. This map is NOT suitable for survey purposes and does not purport to depict or establish boundaries between land owners or locations of utility infrastructure where survey data is available and field locations have been established.



DRAFT

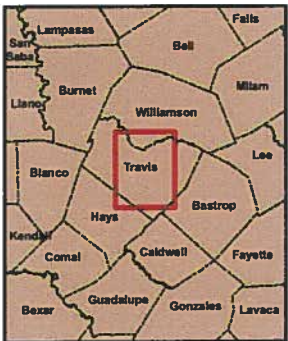
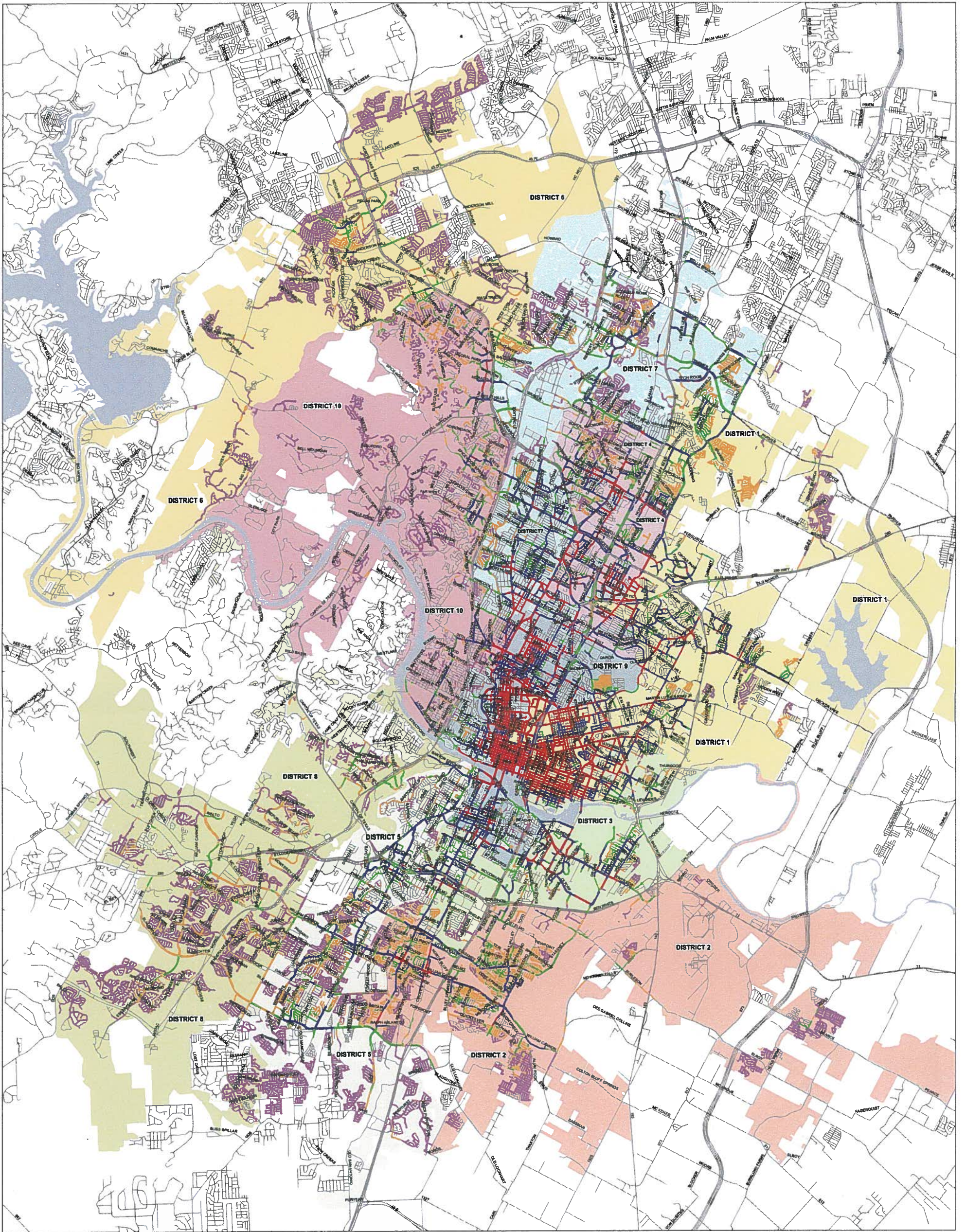


COUNCIL DISTRICT	PIMS ABSENT SIDEWALK SCORE	ABSENT SIDEWALK SEGMENT COUNT
1	≤ 30.00 (Very Low)	7,985
2	30.01 - 40.00 (Low)	6,779
3	40.01 - 50.00 (Medium)	5,632
4	50.01 - 59.00 (High)	3,785
5	> 59 (Very High)	3,237
6		
7		
8		
9		
10		
Lakes		
Roads		

SCORING DISTRIBUTION
Minimum: 0.00
Maximum: 88.40
Mean: 40.03
Median: 38.25



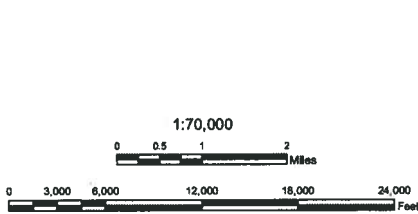
City of Austin Pedestrian Plan Existing Sidewalk Scoring Results



HDR makes no representations or warranties regarding accuracy or completeness of the information depicted on this map or data from which it was produced.

This map is NOT suitable for survey purposes and does not purport to depict or establish boundaries between land owners or locations of utility infrastructure where survey data is available and field locations have been established.

mwm Design Group HDR



DRAFT

COUNCIL DISTRICT	PIMS EXISTING SIDEWALK SCORE*	PIMS EXISTING SIDEWALK COUNT*
1	<= 30.00 (Very Low)	65,983
2	30.01 - 40.00 (Low)	31,957
3	40.01 - 50.00 (Medium)	13,814
4	50.01 - 59.00 (High)	9,761
5	> 59.00 (Very High)	14,105
6		
7		
8		
9		
10		
Lakes		
Roads		

SCORING DISTRIBUTION
Minimum: 0.00
Maximum: 86.3
Mean: 34.88
Median: 30.51

* Driveways are not included in the Scoring or Count shown on this map.