



## AUSTIN ENERGY'S TELECOM POLE ATTACHMENT PROGRAM

ELECTRIC UTILITY COMMISSION

APRIL 18, 2016



# AUSTIN ENERGY

## POLE ATTACHMENT MANAGEMENT

**INFRASTRUCTURE ASSET MANAGEMENT (IAM)** - Austin Energy work group charged with responsibility for third-party attachments to electric utility infrastructure

- There are approximately 165,000 electric distribution poles in Austin Energy service territory
- There are approximately 365,000 third-party attachments on Austin Energy poles
- Texas Local Government Code Chapter 283 requires municipalities to allow the use of public rights of way by telecommunications providers
- Chapter 15-7 of the Utility Regulations of the City Code requires that Austin Energy:
  - Permit fair, reasonable, and non-discriminatory access to the available capacity on utility infrastructure; and
  - Safeguard the reliability and integrity of the electric utility system



# AUSTIN ENERGY

## POLE ATTACHMENT MANAGEMENT

### **Communications infrastructure on utility infrastructure**

- **Pole Wireline Attachments**
  - Certificated Telecommunications Providers
    - Companies such as AT&T, Time-Warner, Grande
  - State Franchised Video Providers (video, internet and data transmission providers)
    - Google Fiber Project
- **Pole Wireless Attachments (in the public right of way)**
  - Under Consideration
- **Cell Tower Attachments**
  - Companies such Verizon, Cricket Communications, etc.



# AUSTIN ENERGY POLE ATTACHMENT MANAGEMENT

## **Approximate number of poles with new attachment applications:**

- 6,700 in 2012
- 12,000 in 2013
- 50,000 in 2014
- 30,000 in 2015

## **Austin Energy enforcement priorities:**

- **Prohibit new attachments on fully subscribed poles**
- **Clearance Violations (on poles and over streets)**
- **Removal of attachments in the Supply Space**
- **Address unauthorized attachments**
- **Failure to trim trees in Communications Space**
- **Failure to tag attachments**
- **Improper guying and boxed-in poles**



# Construction Guidelines and Requirements

- **Clearance Requirements:**

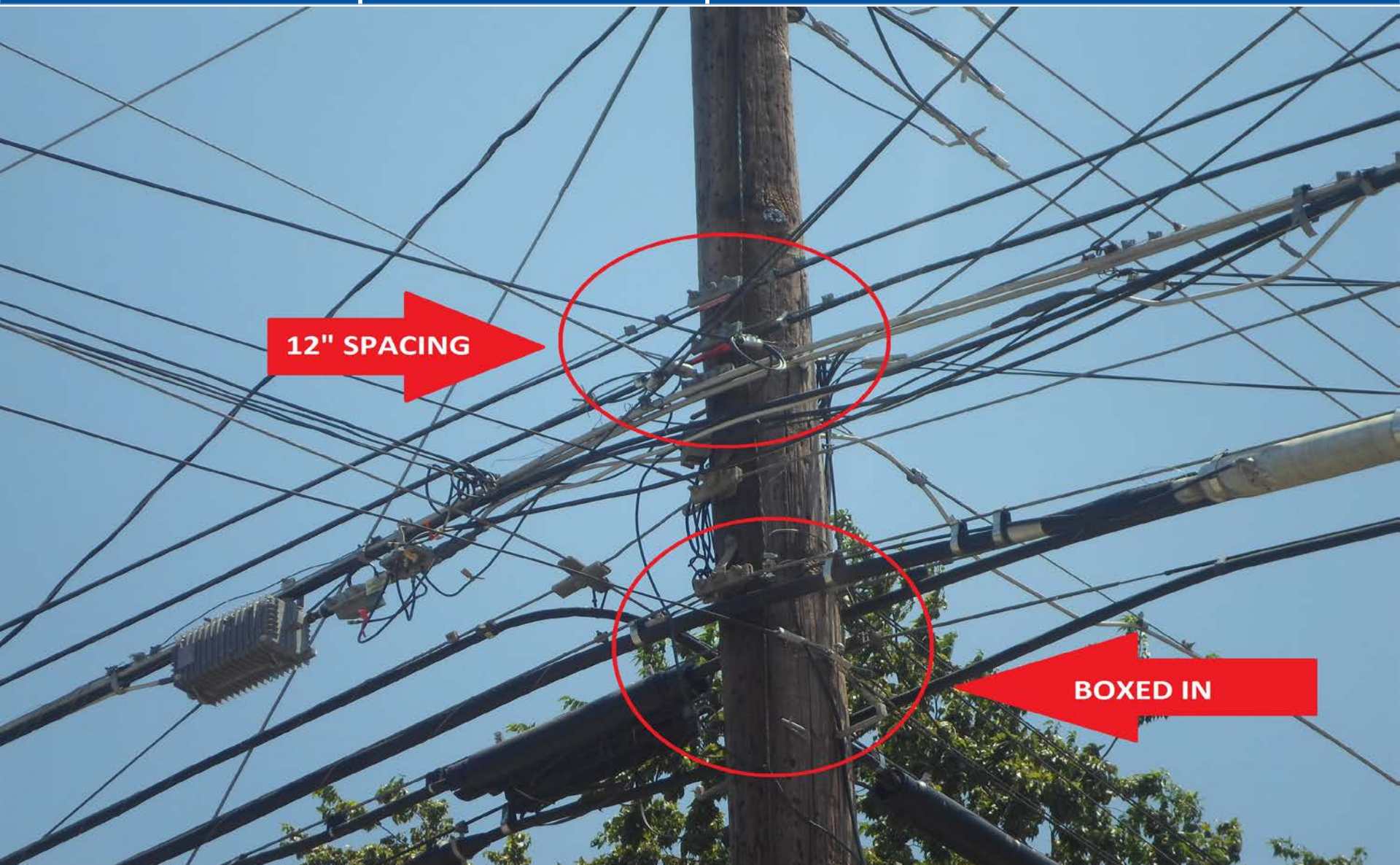
Austin Energy's spacing requirements include:

- the clearance at the pole is 40" between the lowest electrical conductor and the highest communication cable
- 12" spacing between attachments at the pole
- the mid-span vertical clearance is 30" between the lowest electrical conductor and the highest communication cable
- 6" mid span between attachments
- 15'6" over driveways, roads, streets, driveways, parking lots, and alleys
- Clearances of 18' for TXDOT road crossings
- 12' to ground over spaces accessible to pedestrians only
- 24' to the top of rail of railroad tracks





# Failure to maintain 12-Inch clearance (spacing) requirement on the pole





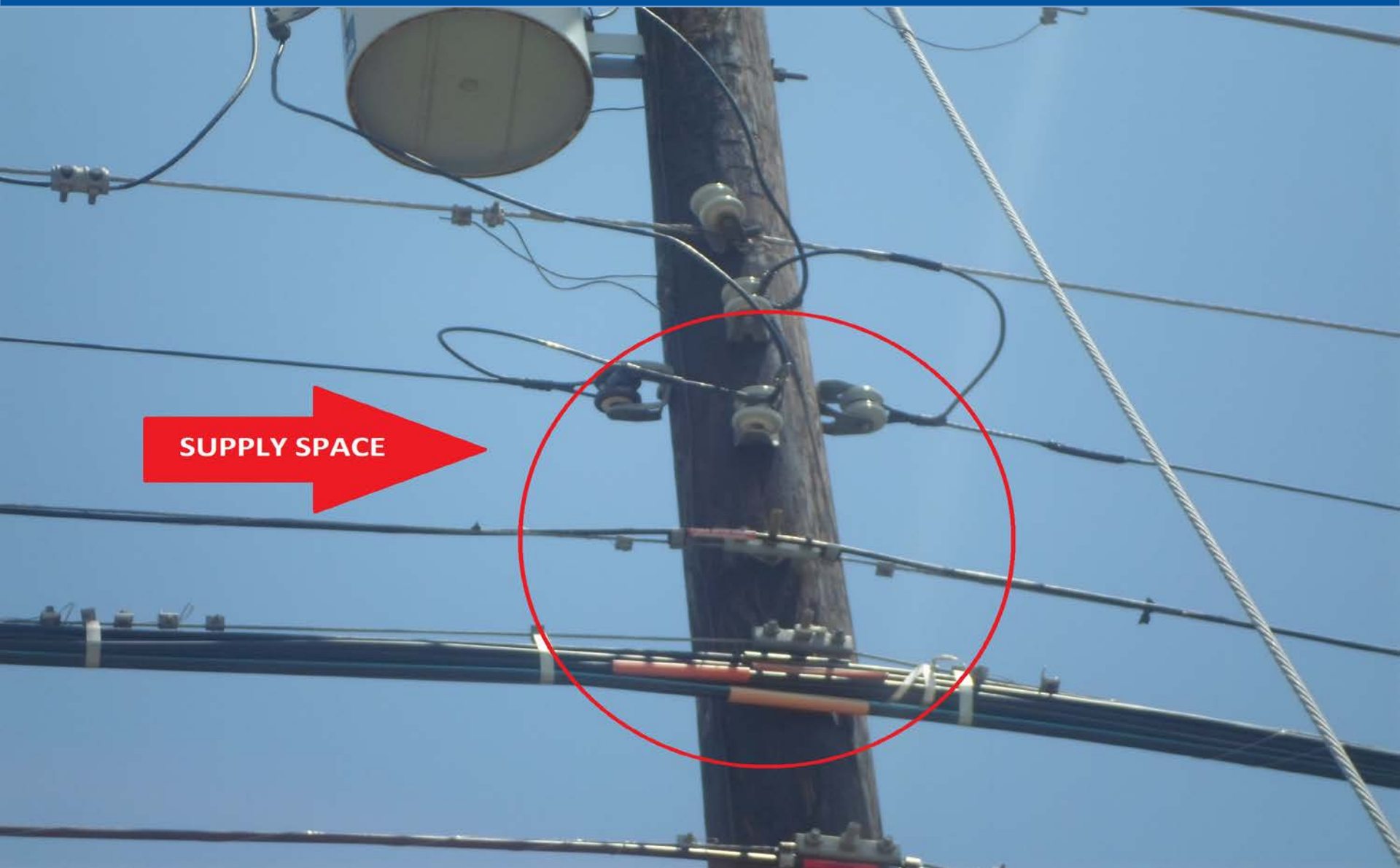
# Failure to maintain clearance over roadways







# Installation in the Supply Space







# Unauthorized Attachment







# Tree Trimming



**TRIM LIMBS**

**ADDED STRESS**





# Failure to tag attachments







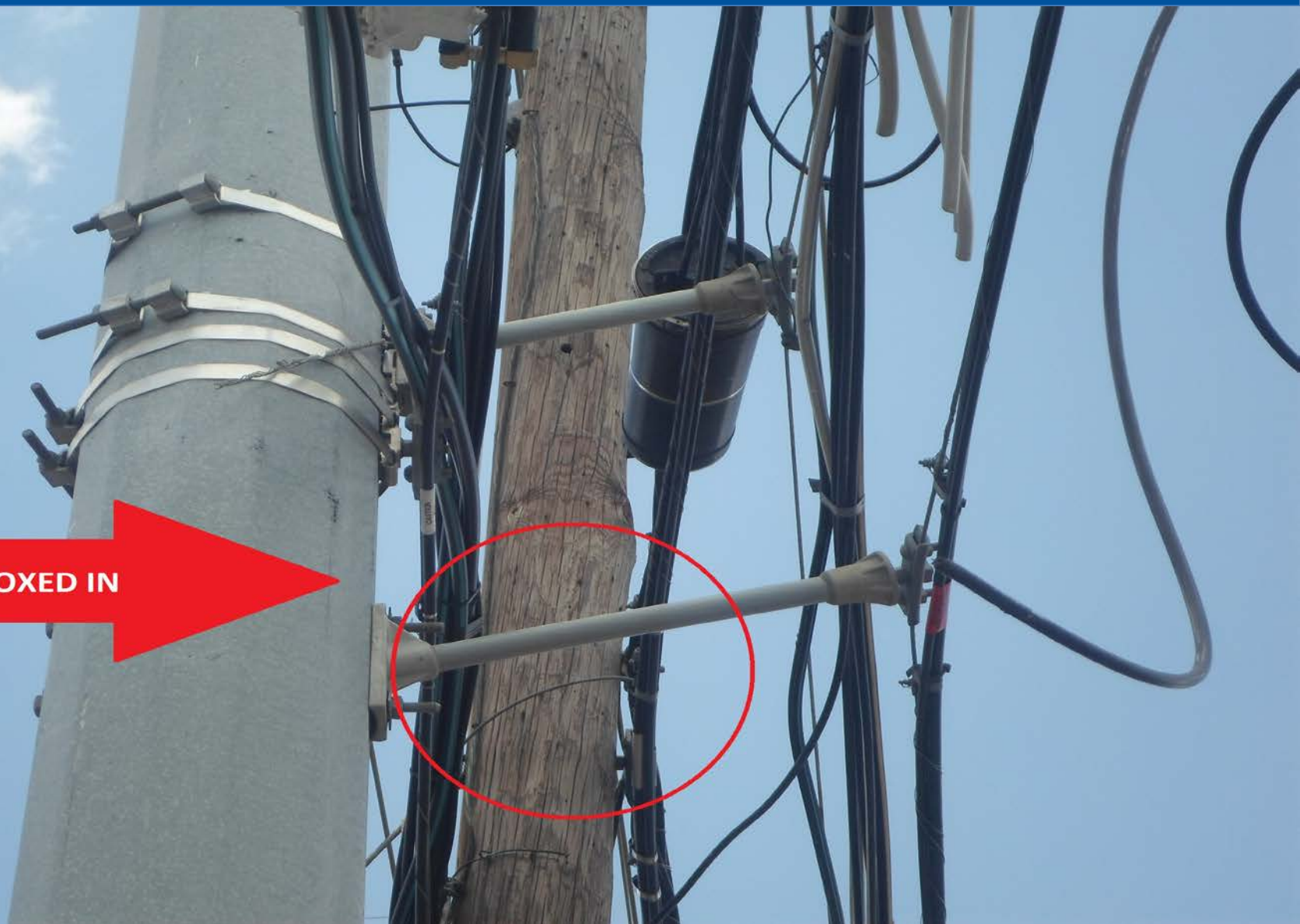
# Improper guying







# Boxed-In





### **Current Austin Energy initiatives to address pole attachment issues:**

- Development of new Pole Attachment Wireline Standards
- New pole attachment application process:
  - Require information regarding existing attachments
  - Require Pole Loading Analysis for poles with 5 or more attachments
- Communication company installation projects result in:
  - Increased review of pole inventory
  - Pole replacements initiated by communications companies
- Increased education and communication
- Online violation reporting process in development
- Increased enforcement of pole attachment violations



# Austin Energy

## Pole Attachment Management

### Current Status of efforts to address Violations and Clearance Issues:

- New application process – Final in 2015
- Pole attacher training - Conducted in 2015
- Pole replacements in 2015:
  - Approximately 400 replaced by communication companies
  - Approximately 500 replaced by Austin Energy
- New Pole Attachment Wireline Standards
  - Final in 2016



# Austin Energy Pole Attachment Management

QUESTIONS?