



Community Solar Update

Danielle Murray, Manager, Solar Energy Services





Community Solar Overview

- Community Solar will expand access to solar energy for customers unable to install solar panels on their own homes or dwellings, including:
 - Renters and apartment dwellers
 - Homeowners with shaded roofs
 - Customers unable to make the upfront investment in rooftop systems or qualify for financing
- Allows participants to receive the benefits of solar power without actually owning or hosting the solar panels on-site
 - No impacts on participant's roof
 - No maintenance for participant to worry about



First Community Solar Project: Kingsbery

- 2.0 MW-AC project
- Project Developer: Power Fin
- Currently in Site Plan Development Phase
- Completion: QTR 1 FY17



Kingsbery Site

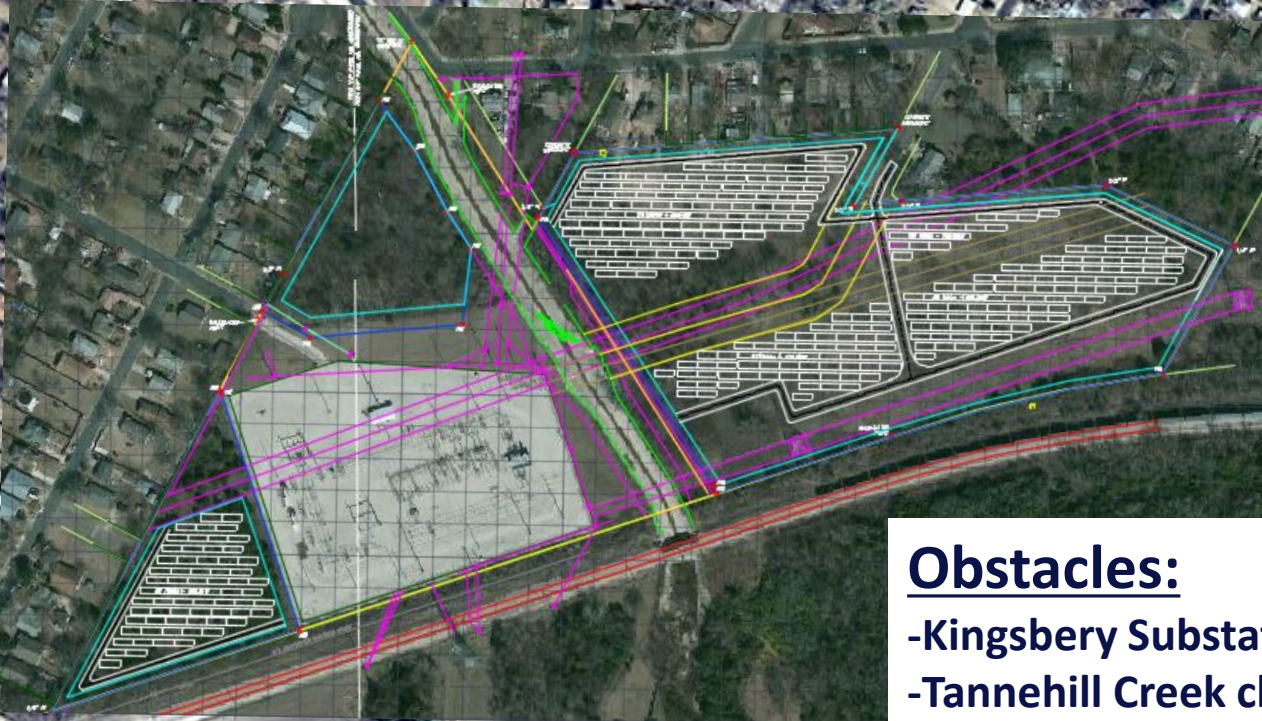
AE owns green
area around
substation



KINGSBERY
SUBSTATION

Obstacles:

- Kingsbery Substation
- Tannehill Creek channel
- CapMetro rail line
- Transmission Access
- Natural Gas Pipe Easement



Obstacles:

- Kingsbery Substation
- Tannehill Creek channel
- CapMetro rail line
- Transmission Access
- Natural Gas Easement
- Critical Water Quality Zone
- Protected & Heritage Trees



Major Milestones to Date

- Community outreach
 - Including: Solar Austin, ThinkEast, Springdale-Airport Neighborhood Association, PODER, La Loma/Johnston Terrace Connectivity Project, East MLK Neighborhood Contact Team, Austin Environmental Justice & Sierra Club, CM Renteria and Houston's offices
- Purchase Power Agreement and Lease signed with PowerFin
- Plan amendment and rezoning approved by Austin Planning Commission & City Council
- Environmental Resource Inventory Study by Watershed Dept
 - Critical Water Quality Zone identified in eastern portion of property
- Waters of US Assessment: jurisdictional waters/wetland delineation
 - Army Corps of Engineers approval of "No Permit" request
- Environmental Site Assessment for soil or groundwater contamination
- Geotechnical review of soils for construction
- Antiquities Report completed, submitted to Texas Historical Commission
- Tree Survey completed and Mitigation Plan developed
 - Survey: 388 total trees on the property, including 12 Heritage trees and 34 Protected trees
 - Proposed site plan: 248 trees maintained, including all of the Heritage trees and 26 protected trees
- TCEQ and US DOE grants awarded to AE for development of Energy Storage at Kingsbery
 - SHINES grant will enable AE to study integration of solar and storage onto the grid at Kingsbery and Mueller





Next Steps

KB Project Development

- Tree mitigation plan approval (April)
- Final engineering and site plan development (May-June)
- Site plan review by Development Services Dept and approval by Land Use & Planning Commissions (June-Sept)
- Construction (Oct-Dec)
- Project Completion: (Dec 2016)

Program Design

- Subscription model focus groups (April)
- Proposed subscription model & refinement of pricing based on system design (May-June)
- Subscription model in FY17 rates package to Council (June-Sept)
- Back end customer service, billing, enrollment tool development (June-Sept)
- Program marketing & enrollment (Oct-Dec)



Subscription Models

- Currently doing market research to determine most compelling subscription model
 - Capacity-based subscription
 - Options for upfront payment or monthly payments
 - Participant receives solar credits on bill
 - PSA Plus
 - Similar to GreenChoice, participants replace their power supply with 100% community solar for ~\$0.01 premium
 - PSA Lock
 - Participants lock in community solar rate in place of PSA; premium today, hedge against future PSA fluctuation
 - Low-Income Program
 - Requires subsidy by other ratepayers



EXTRA SLIDES



Capacity-Based Subscription Model

