



# City of Austin Parks and Recreation Department Parkland Dedication Operating Procedures Rules Adoption Process

Parks and Recreation Board

May 24, 2016

Presented by:

Randy Scott, Park Development Coordinator  
Marilyn Lamensdorf, Principal Planner



# Overview



- ❑ Why we are here
- ❑ Deficient Park Area Map
- ❑ Parkland Dedication  
Operating Procedures
- ❑ Process for Rules Posting



*Tom Lasseter South Lamar Neighborhood Park*

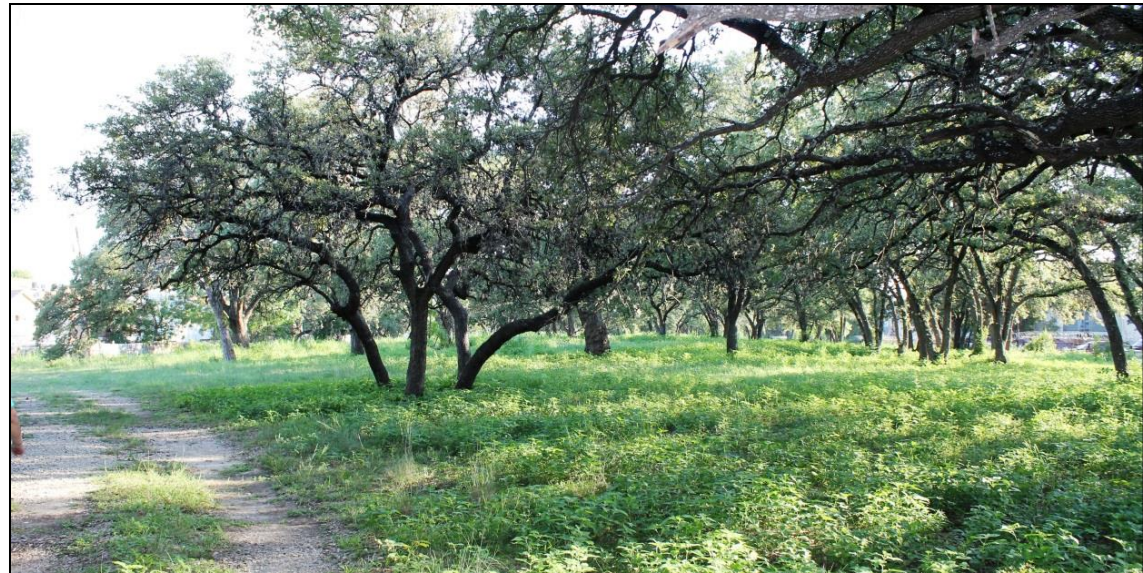


# Why Are We Here?



- ❑ City Council approved a new parkland dedication ordinance in January 2016
- ❑ Ordinance authorizes PARD Director to adopt administrative rules to implement the ordinance
- ❑ First, the Director must present proposed rules to the Parks Board for a recommendation

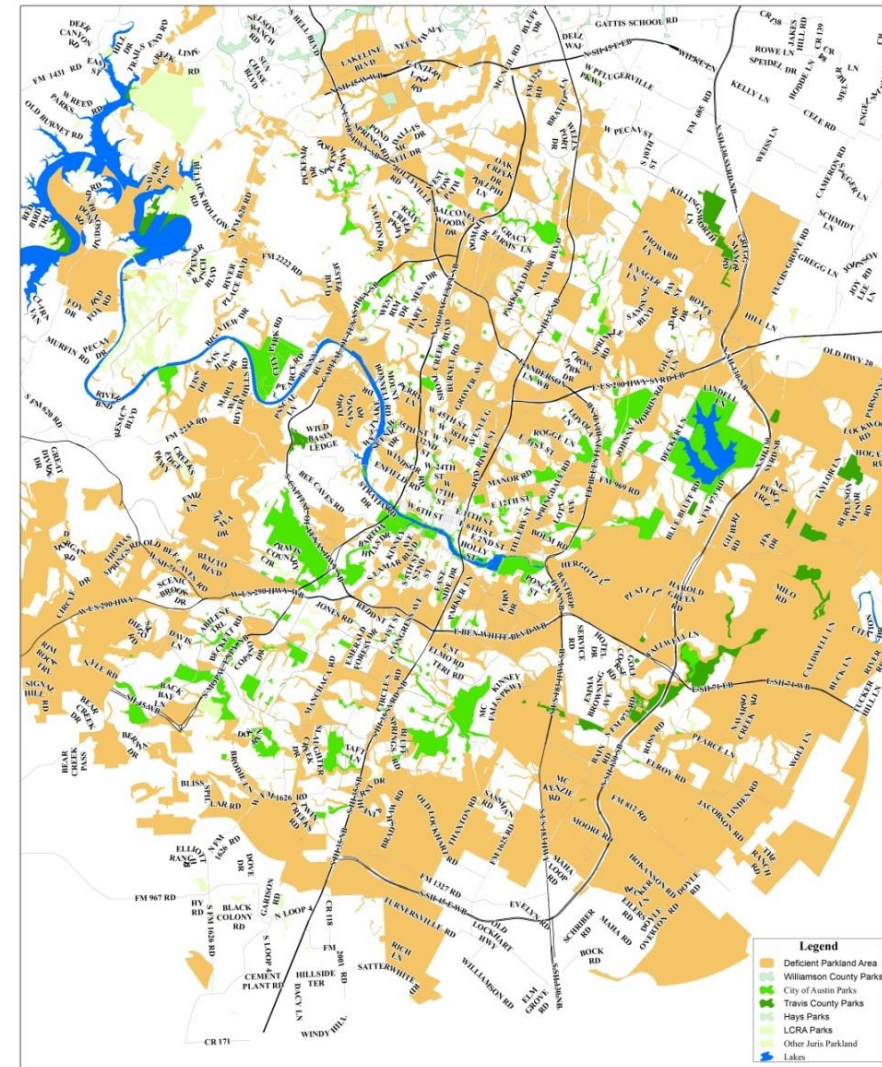
*Georgian Acres Park*



# Park Deficient Area Map



- ❑ Land within the Parkland Dedication Urban Core that has no parkland within ¼-mile;
- ❑ Land outside the urban core, including the ETJ, that has no parkland within ½ -mile;
- ❑ Potential Creek Greenways; and
- ❑ Urban Trails Master Plan corridors.



DEFICIENT PARKLAND AREAS



10 March 2016 "M1"  
This map was prepared by the City of Austin Parks and Recreation Department. It is not intended to be used for any other purpose. The City of Austin does not warrant the accuracy or completeness of the information shown on this map. The City of Austin is not responsible for any errors or omissions on this map. The City of Austin is not responsible for any damages, including consequential damages, arising from the use of this map. The City of Austin is not responsible for any claims, including consequential claims, arising from the use of this map. The City of Austin is not responsible for any losses, including consequential losses, arising from the use of this map. The City of Austin is not responsible for any injuries, including consequential injuries, arising from the use of this map. The City of Austin is not responsible for any deaths, including consequential deaths, arising from the use of this map. The City of Austin is not responsible for any damages, including consequential damages, arising from the use of this map. The City of Austin is not responsible for any claims, including consequential claims, arising from the use of this map. The City of Austin is not responsible for any losses, including consequential losses, arising from the use of this map. The City of Austin is not responsible for any injuries, including consequential injuries, arising from the use of this map. The City of Austin is not responsible for any deaths, including consequential deaths, arising from the use of this map.



# Spending Fee-in-lieu of Land



- ❑ PARD must attempt to acquire land within ½ mile of development.
- ❑ If not possible, the following priorities apply:
  1. Acquire land within an area to be of direct benefit to residents in a Parkland Deficient Area;
  2. Acquire land within a two-mile radius;
  3. Acquire land within the PARD Long-Range Planning Area (27 areas)



*Onion Creek*

# Spending Park Development Fee



- ❑ PARD must attempt to build amenities within ½- mile of development.
- ❑ If not possible, PARD will build amenities according to the following priorities:



1. Within an area to be of direct benefit to residents in a Parkland Deficient Area;
2. Within a two-mile radius;
3. Within the PARD Long-Range Planning Area (27 areas);
4. At the nearest Metro or District Park



# General Standards for Dedicated Parkland



- ❑ Park must front a public road
- ❑ Interior of park must be visible from a public street
- ❑ 50% of the property must be suitable for open play
- ❑ Partial credit may be given for environmental features, ponds, and green infrastructure designed as an amenity
- ❑ Partial credit for 100-year floodplain and no credit for 25-year floodplain

# Superior Parkland Dedication for MUDs, PIDs, and PUDs



Two factors determine superiority:

- ❑ A higher standard of land dedication equal to a District Park level of service (currently 10.4 acres per 1,000 residents)
- ❑ Park development according to a PARD-approved plan



*Bryant Park in Pilot Knob MUD No. 3*



# Standards for Private Parkland



- ❑ Establishes a point system for credits based on:
  - active play amenities,
  - public access,
  - group gathering spaces,
  - enhanced landscaping such as shade, wildlife habitat, and food forests
  - ability for PARD to provide programming



# Methodology for determining fees



- ❑ Fee in lieu of land to be adopted each Oct. 1
- ❑ Per City Code 25-1-605(D):

$$\text{Land cost per person} = \frac{\text{Parkland Cost Factor}}{\text{Parkland Level of Service}}$$

Variable	Description
<b>Parkland Cost Factor</b>	<ul style="list-style-type: none"><li>• Average per-acre cost of land purchased over the last five years</li><li>• Currently \$39,000</li></ul>
<b>Parkland Level of Service</b>	<ul style="list-style-type: none"><li>• City Population / Existing Park Acres</li><li>• Currently 106 people per acre (or 9.4 acres/1,000 people)</li></ul>



# Methodology for determining fees



- ❑ Park development fee to be adopted each Oct. 1
- ❑ Per City Code 25-1-606(B):

$$\text{Park Development Cost per person} = \frac{\text{Park Development Cost Factor}}{\text{Park Facilities Level of Service}}$$

Variable	Description
<b>Park Development Cost Factor</b>	<ul style="list-style-type: none"><li>• Average cost of last 5 neighborhood parks</li><li>• Currently \$800,000</li></ul>
<b>Park Facilities Level of Service</b>	<ul style="list-style-type: none"><li>• Population / Number of Developed Parks</li><li>• Currently 4,306 people per park</li></ul>

# Next Steps



## **Rules Adoption Process in Chapter 1-2 of the City Code**

- ❑ Director posts the rules for comment for 31 days
- ❑ Staff responds in writing to all comments received in the comment period
- ❑ Rules must be adopted by the Director of PARD by the 90<sup>th</sup> day

# Questions and Discussion

