



Transforming Care in Central Texas

*An update on the new
Dell Seton Medical Center
@ the University of Texas
and the work of the
Community Care Collaborative*

WELCOME TO
HUMANCARE



City of Austin
Health and Human Services Subcommittee
May 24, 2016



INTEGRATED SYSTEM



CENTRAL
HEALTH

NEW MEDICAL SCHOOL

THE UNIVERSITY OF
TEXAS
AT AUSTIN

PERSON
CENTERED,
HIGHER QUALITY
OF CARE,
COST EFFICIENT

NEW TEACHING HOSPITAL



Seton
Healthcare Family

Central Health and the Seton Healthcare Family partnered in 2013 to create the **CCC** to knit together fragmented pieces of the local health care system.

Central Health provides financial support to the CCC as well as matching federal dollars



Seton provides financial support and health care services including specialty care to the CCC, and is building the new DSMC@UT

The **Community Care Collaborative** is developing new, innovative and cost-effective health care delivery methods to serve the safety net population in Travis County

WELCOME TO
HUMANCARE



Building an Integrated Delivery System

The CCC is focused on developing an integrated delivery system to:

- Improve patient experience of care
- Improve health of Travis County's population, especially the underserved
- Improve cost effectiveness of health care



CCC DSRIP Implementation Accomplishments

In DY4:

15 CCC DSRIP projects
\$25.4M investment
93% success rate
\$59.1M incentives earned

DY4 success stories

Hepatitis C

- Cured 215 patients (372 total to date)

Improved blood pressure control for diabetics

- 4% improvement over DY3

Increased primary care access

- Opening of the Central Health
Southeast Health & Wellness Center



Seton DSRIP Innovation Projects

22 projects benefiting 150,000 patients

DSRIPS are Designed to:



Care for Medicaid recipients or low income individuals without insurance



Improve the health of the population



Lower costs through efficiencies and improvements

Areas of Focus:



Low Income Individuals



Patients with chronic disease



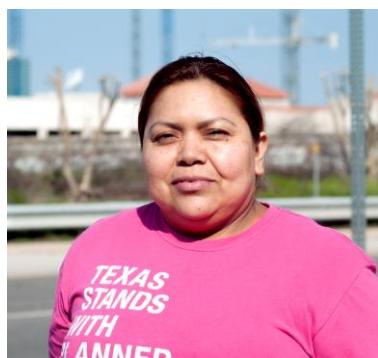
Special & Vulnerable Populations (children, pregnant women, homeless, behavioral health needs)

Ascension Texas DSRIPs

Focus Areas	Purpose
Prevention	Prevention and treatment of childhood obesity
Detection	Breast and cervical cancer screening Behavioral health assessments and referrals
Navigation and Transition	Prenatal and postnatal navigation services to Hispanics Cancer treatment navigation and survivorship support Transition services for Substance Abuse patients Care for complex medical diagnoses and psychosocial issues
Disease Management	Coordinated chronic disease patient care Successful diabetes patient discharges Comprehensive pediatric chronic disease care
New Services or Providers	Palliative care New Psychiatric Emergency Room Telemedicine psychiatric consultation Expand workforce of psychiatric providers
Service Delivery	Improved communication via language interpreters More awareness of racial and ethnic disparities in healthcare

Benefit Plan Redesign Update

- Rapid design sessions - Multiple stakeholders
- Developed guiding principles
- Evaluating proposals
- Goal is to include in FY2017 budget with implementation



Seton/Dell Medical School Collaboration Focus



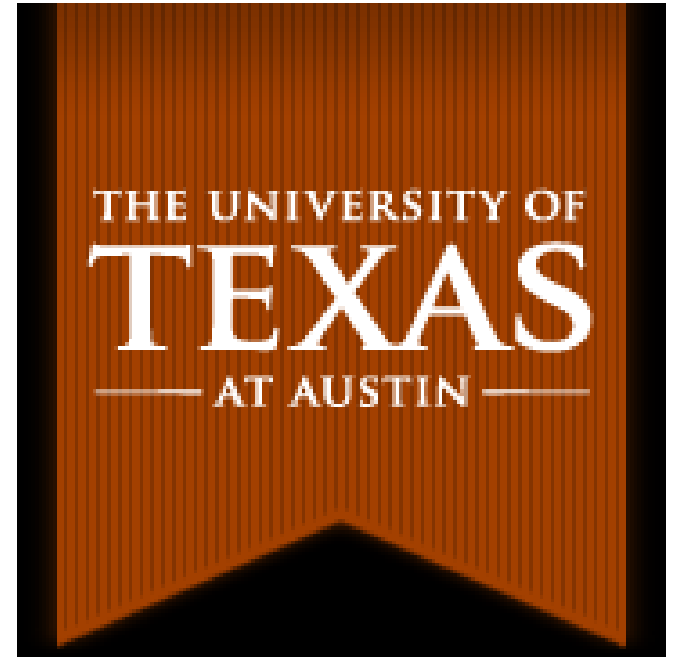
**New Chairs and staff
integrating into Seton
operations**



**Planning for Development
of Analytics and Simulation
Training Capabilities**



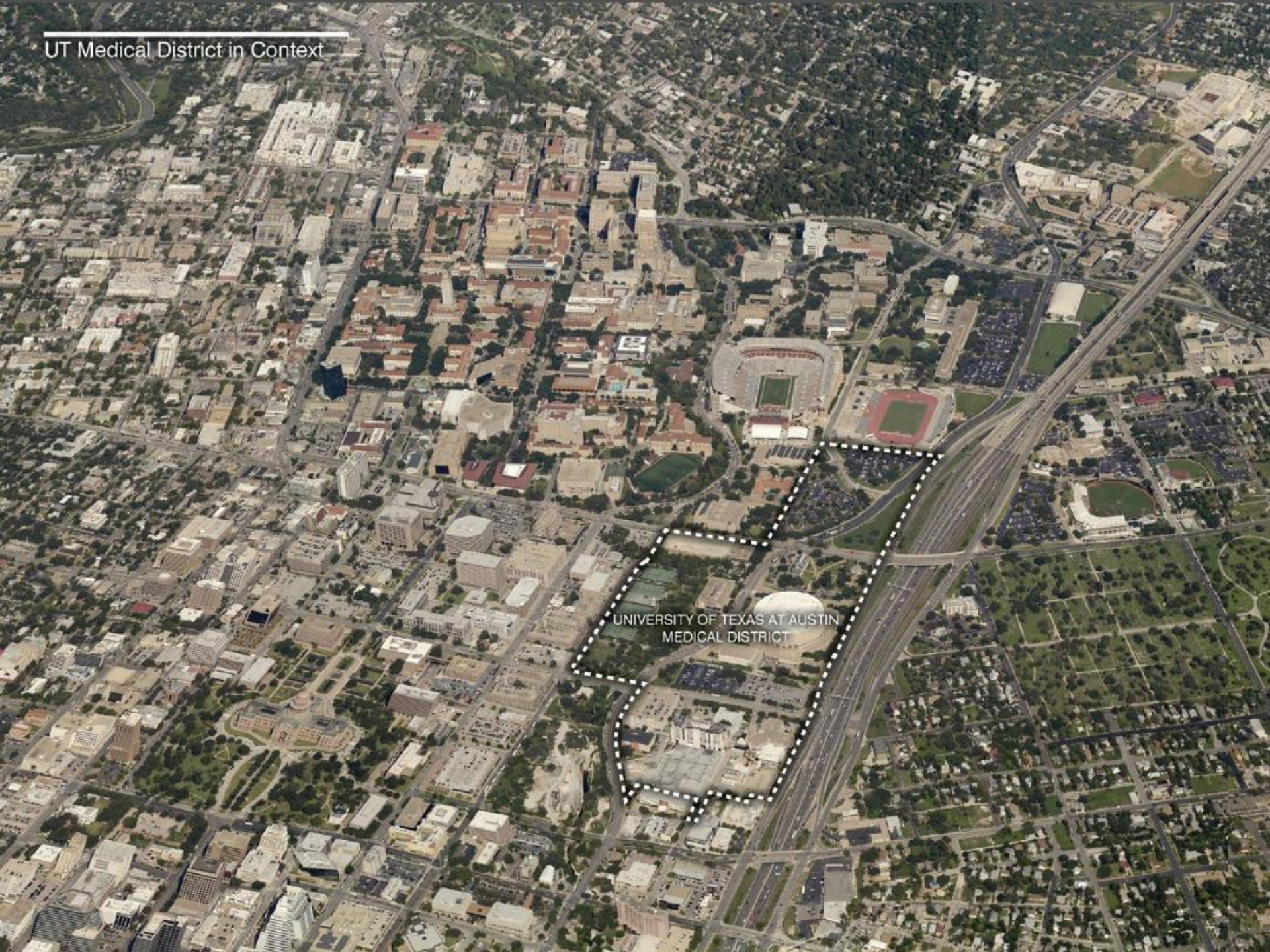
**Involvement in ICC
and CCC work groups**

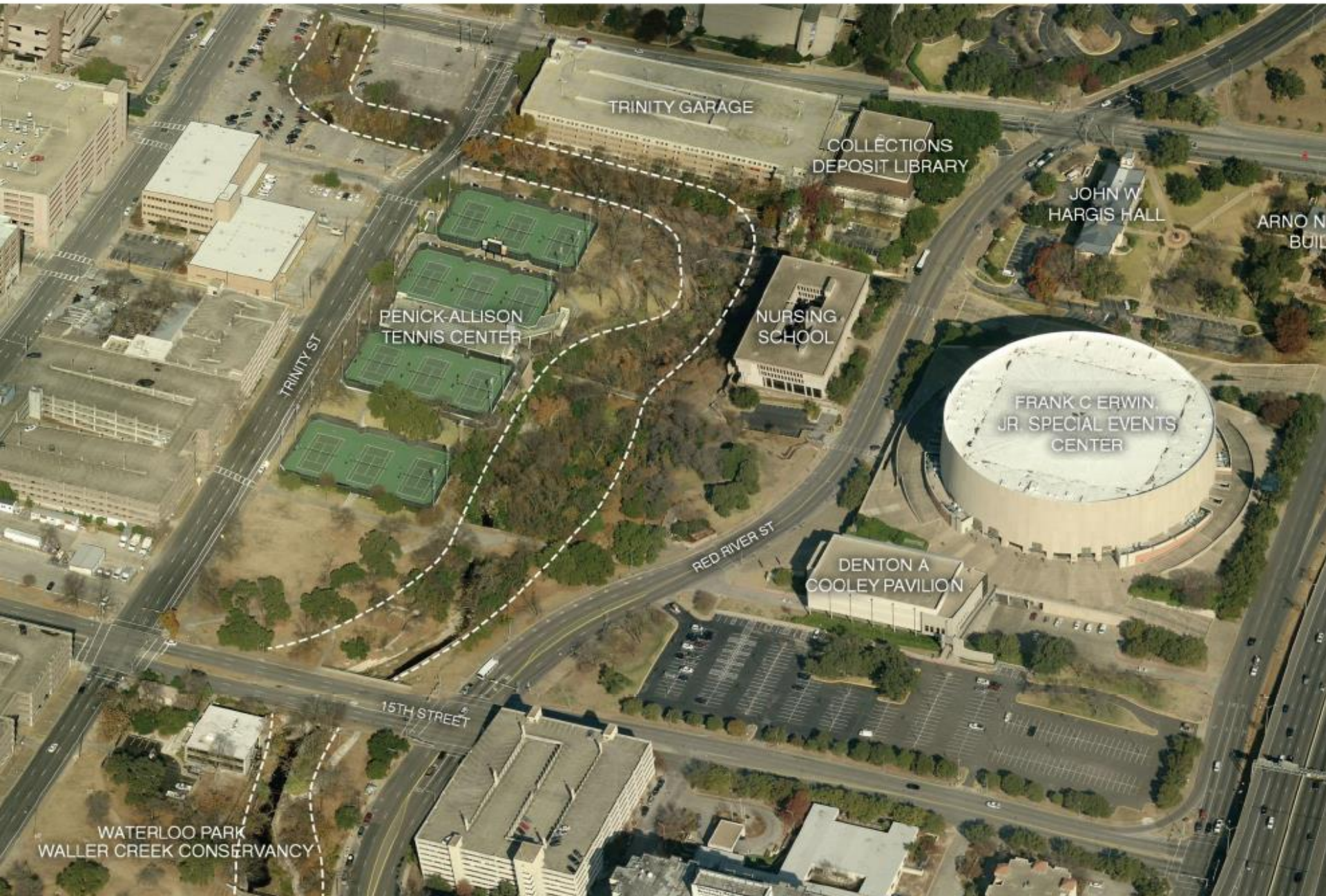


An Update on the New Facility



UT Medical District in Context





TRINITY GARAGE

COLLECTIONS
DEPOSIT LIBRARY

JOHN W.
HARGIS HALL

ARNO N.
BUL

PENICK-ALLISON
TENNIS CENTER

NURSING
SCHOOL

FRANK C. ERWIN,
JR. SPECIAL EVENTS
CENTER


DENTON A.
COOLEY PAVILION

15TH STREET

WATERLOO PARK
WALLER CREEK CONSERVANCY

Phase 1 Program



An aerial photograph of a city district, likely in Houston, Texas, showing various urban areas. The map is overlaid with color-coded zones: a red-shaded area in the upper right, a green-shaded area in the center, a blue-shaded area to the right of the green area, a yellow-shaded area on the left, and a light green-shaded area at the bottom. A major highway runs vertically along the right side of the map. The text labels are placed over their respective colored zones.

Medical District
Phase 1

Waller
Creek
Development

Potential Medical
District Phase 2

Innovation District





High-Tech District

Waller Creek Development

Innovation

Waller

Medical 2

Medical 1



High-Tech District

Waller Creek Development

Creative Arts
District

Medical 1

Medical 2

Waller

Innovation





DSMC-UT Perspective





UT MOB & Research Center























ELT (DSMC-UT Executive Leadership Team)

*Chris Vasquez, Debra Hernandez, Tom Gallagher, Greg Hartman, Kate Henderson,
Sue Cox, David Shackelford, Ken Gladish, Don Rosenberg, Ray Anderson*

PMT (DSMC-UT (Project Management Team)

*Chris Vasquez, Debra Hernandez, Tom Cave, David Shackelford, Steve Warach,
Sue Cox, Sydney Townsend, Alan Bell, Doug Strange, Todd Kemper*

Transition Consultants

RTKL

DSMC-UT Transition Lead

David Shackelford

Ascension Facilities Lead

Doug Strange

Transition Teams

Regulatory

*Susan Bujan &
Lori Brandes*

Construction

Doug Strange

FF&E

Martie Huggins

Information Technology

Todd Kemper

Operational Process Redesign

Marnie Wheeler

Communications

Ellen Decareau

Associate Relations

Bobby Garcia

Patient Move

Taya Murray

Education/Training

Maria Tappan

Physician Engagement

Carlos Meza

Department Activation

Laronica Humphrey

Deactivation

Herman Small