

The Contemporary Austin

Laguna Gloria

DRAFT

AUSTIN HISTORIC COMMISSION PRESENTATION
JULY 25 2016

**The
Contemporary
Austin**

BETTY AND EDWARD MARCUS SCULPTURE
PARK AT LAGUNA GLORIA

REED HILDERBRAND

INTRODUCTION
HISTORIC CONSIDERATION
EXISTING CONDITION
RECOMMENDATION
PROPOSAL

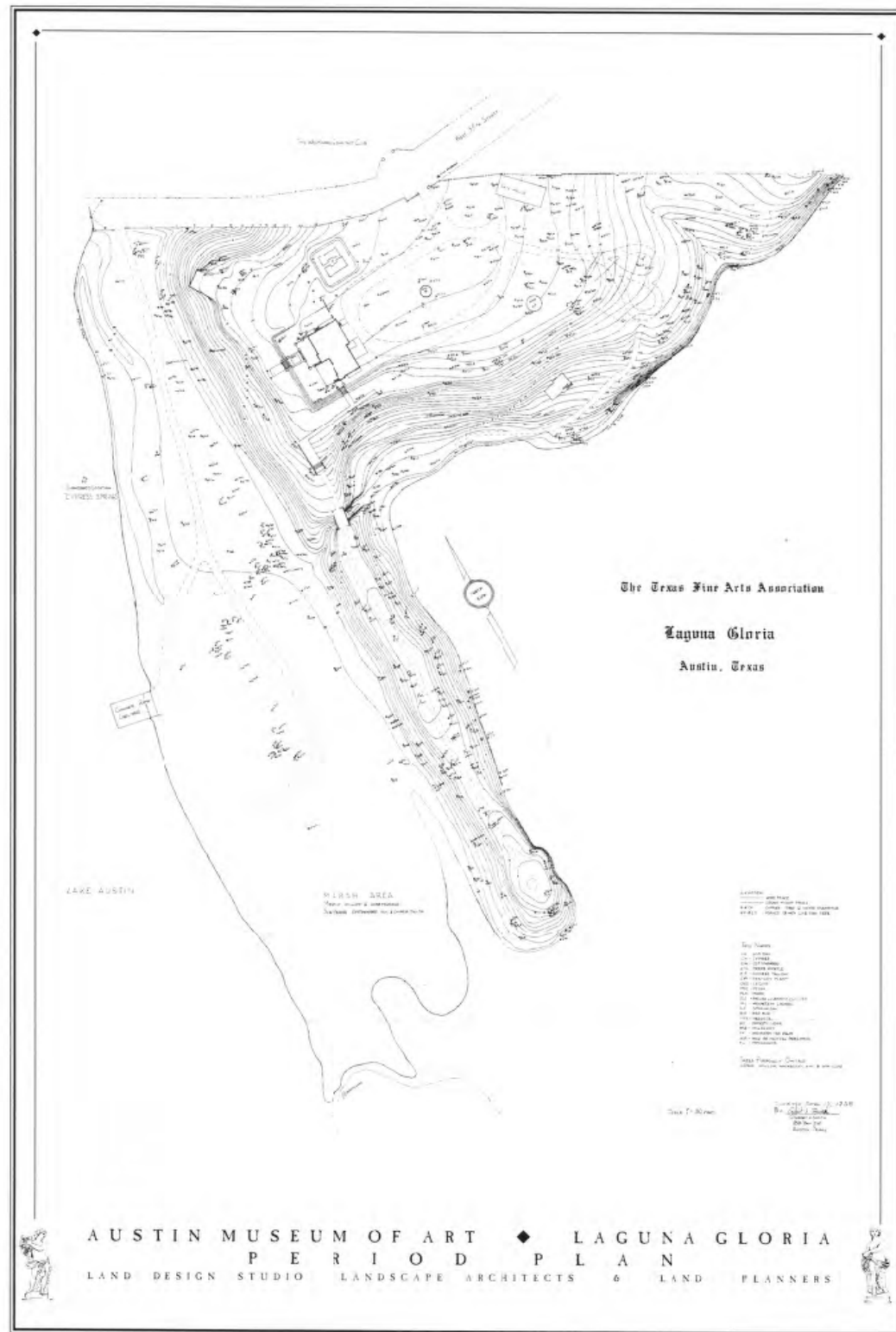
HISTORIC CONSIDERATION

Timeline of Significant Historic Events

1915-1938	Laguna Gloria Period of Significance during Driscoll Era
1975	National Register of Historic Places
1983	City of Austin Landmark Commission, Historic Landmark (2.26 AC Historic Villa Grounds)
1983	Texas Historical Commission, Texas Marker Program
1999	Cultural Landscape Report Prepared by Catherine O'Connor

HISTORIC CONSIDERATION

Period Plan per 1999 Cultural Landscape Report



ENLARGEMENT

HISTORIC CONSIDERATION

Entry Gates and Wall per 1999 Cultural Landscape Report

- Clara Driscoll purchased (2) sets of gates from the Texas State Capitol grounds for relocation to Laguna Gloria as early as 1925
- The original 35th St. entry gates were removed, whereabouts unknown
- Existing gates at 35th St. entry were originally located at the Temple of Love
- The exterior wall was reconfigured in the 1970s to incorporate a cul-de-sac and sidewalk
- The gates were modified from their original shape and width to incorporate (2) pedestrian gates on each side in the 1980s

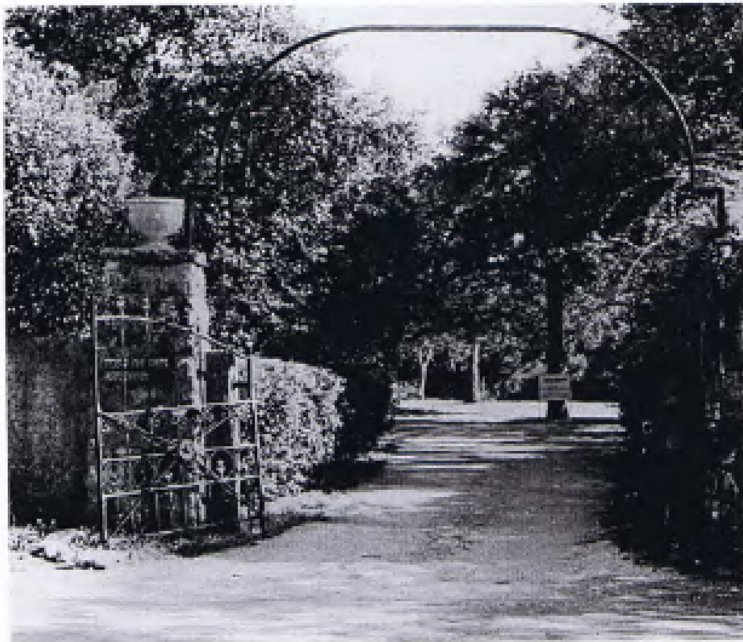


Photo 3.27 Original Front Gates, 1968 (earliest photo available)

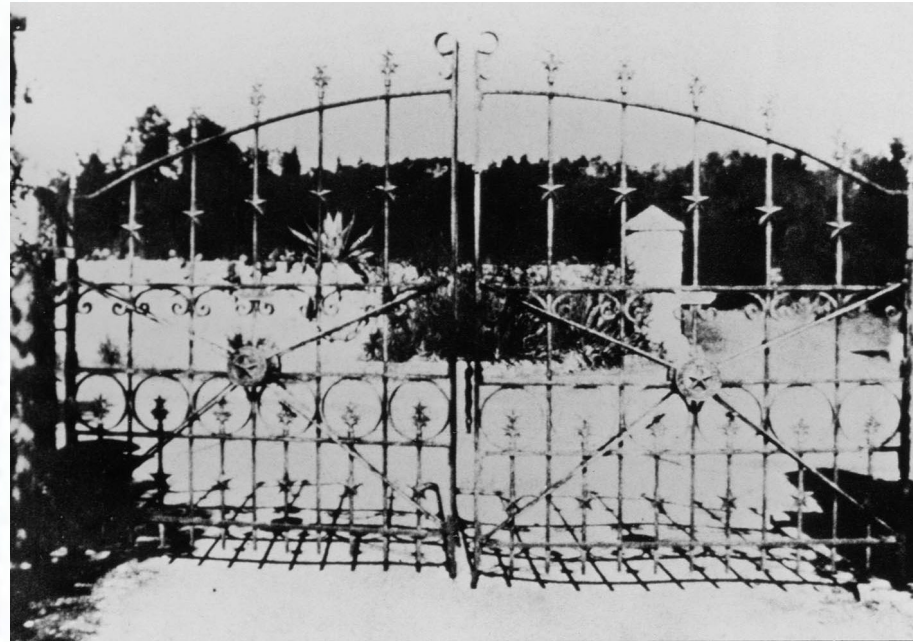


Photo 3.26 Existing Front Gates formerly at end of Path to the Point, 1998

HISTORIC CONSIDERATION

Oval Drive per 1999 Cultural Landscape Report

- Drive was crushed stone or gravel during Driscoll Period of Significance (1915-1938)
- The original width was that of a carriage drive (approx. 11 ft wide)
- The oval has been modified several times and has been paved in asphalt to accommodate parking



Photo 3.14 View of Oval Drive, c. 1919



EXISTING CONDITION

Site Plan



EXISTING CONDITION - GATES

Recommended Action per 1999 Cultural Landscape Report

- “The overall layout of the main entrance at 35th St. has changed significantly since the historic period. The walls have been reconfigured to accommodate a cul-de-sac turn-around with sidewalks.”
- “It is recommended that the gates that are currently located at the front entrance be returned to their historic location at the end of the Path to the Point.”


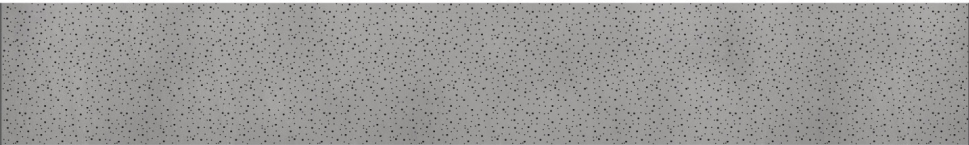




EXISTING CONDITION - OVAL

Recommended Action per 1999 Cultural Landscape Report

- “...considerations include reduce the scale of the driveway to its historic width, removing the asphalt, and replacing it with crushed stone to match the historic condition.”

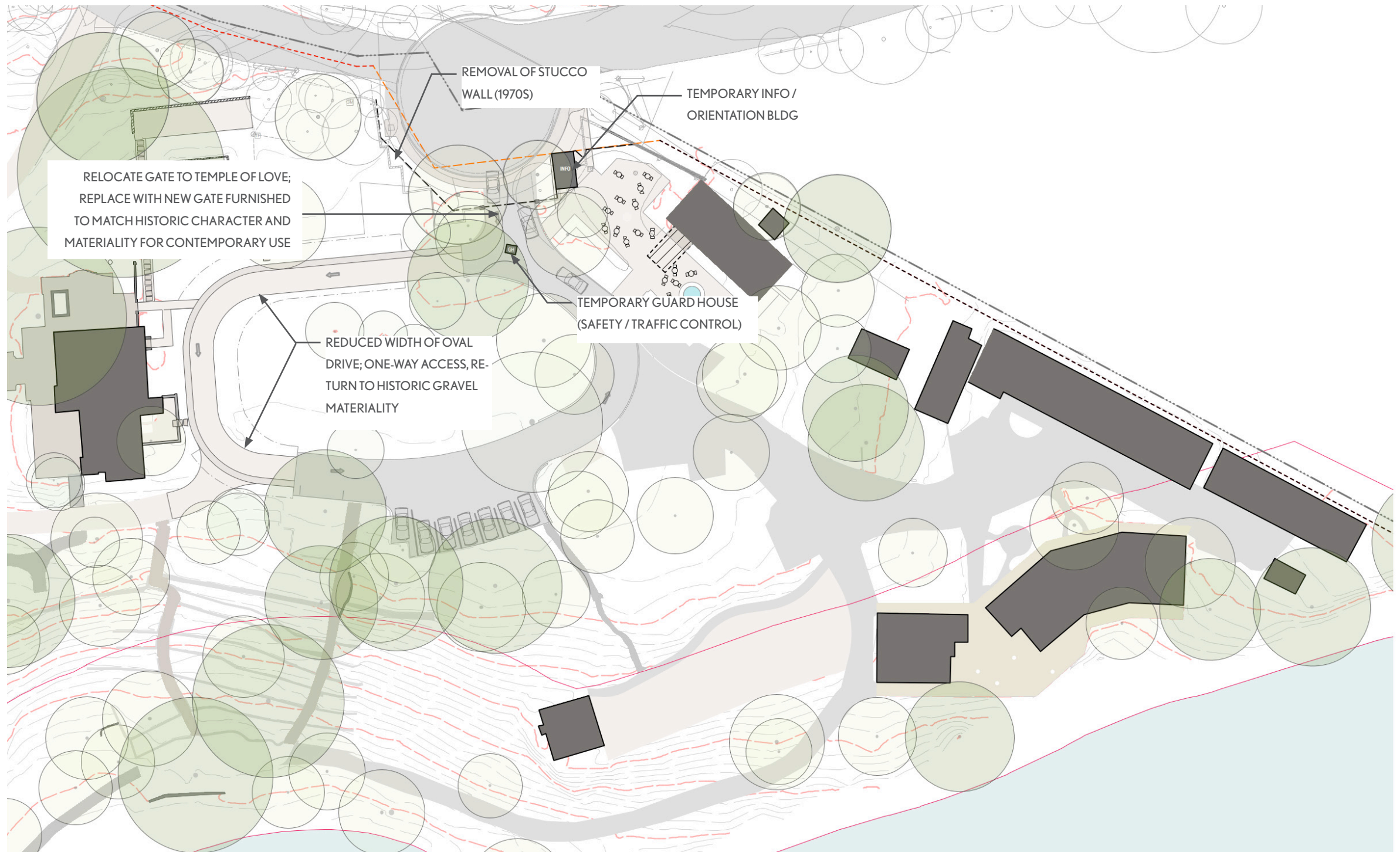


LAWN OVAL WITH CURB				
		19'-0" - 25'-0"	+/- 2'-0"	
		ASPHALT DRIVE	STONEDUST WITH CURB	LAWN



PROPOSAL

Site Plan Rehabilitation - Initial Phase per Recommendations



ENTRY GATE

Existing Condition - Before



View at Entry Gate

EXISTING CONDITION

PROPOSED ACTION

Entry Gate and Exterior Wall - Initial Phase of Rehabilitation

- Existing 35th St. gates to be “rehabilitated” to existing condition and relocated to the Temple of Love
- Existing stone gate piers to remain intact - any structural repair to be completed as part of “rehabilitation” according to historic character and appearance
- New front entry gates to be fabricated to replicate character and materiality consistent with original historic entry gates; “rehabilitated” to accommodate contemporary use - the gates will allow two-cars to pass through with the incorporation of a temporary guard house building to facilitate one-way traffic and increase safety in the historic zone
- Stucco wall to be removed



PROPOSED ACTION

Oval Drive - Initial Phase of Rehabilitation

- Oval width to be reduced to match historic character for partial length
- Asphalt to be removed and replaced with crushed stone to match historic character for partial length
- Traffic circulation to be controlled by temporary guardhouse and reduced to one-way loop

