

Shoal Creek Peninsula Repairs

Parks and Recreation Board

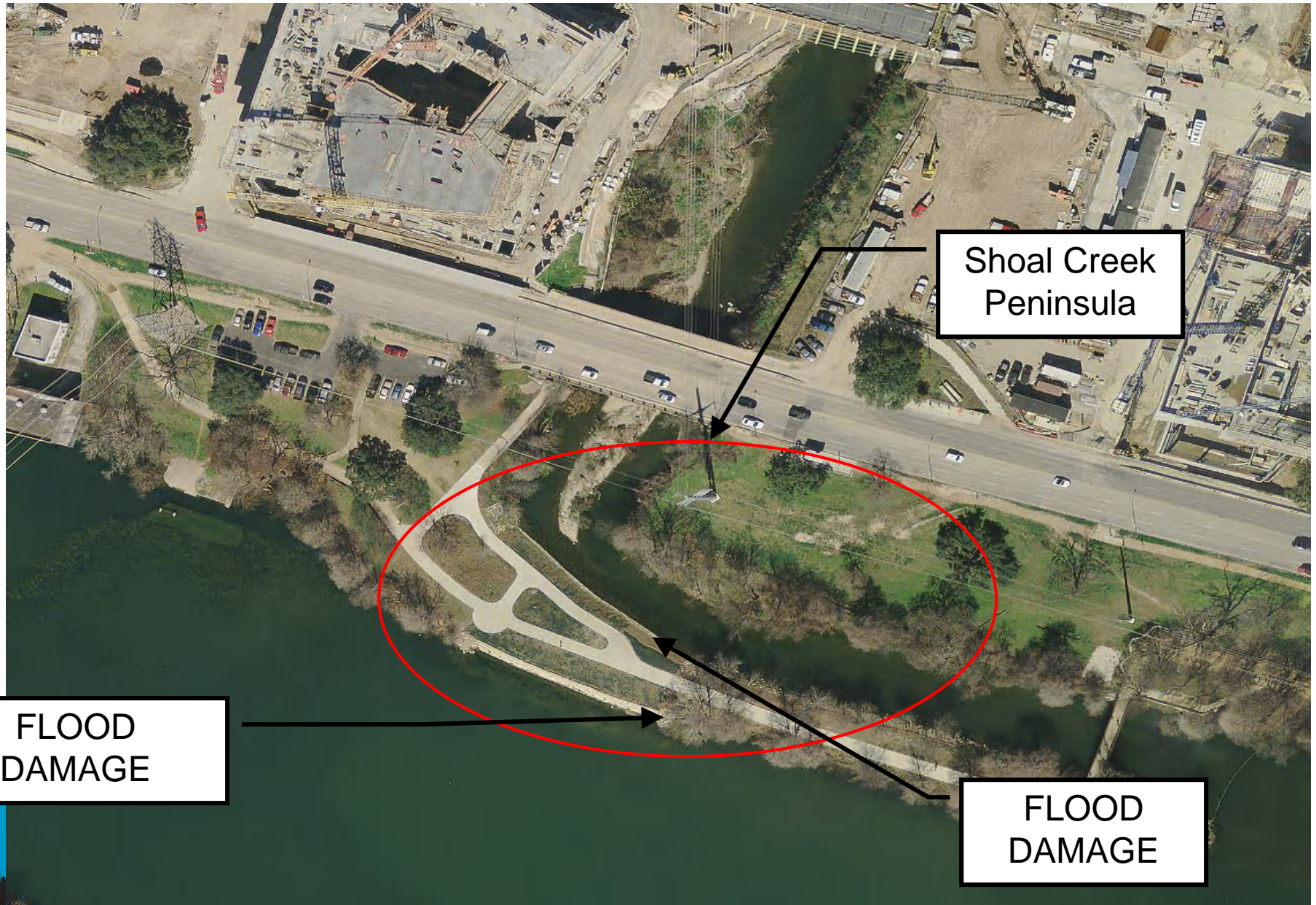
July 26 , 2016

Charles Kaough, PE

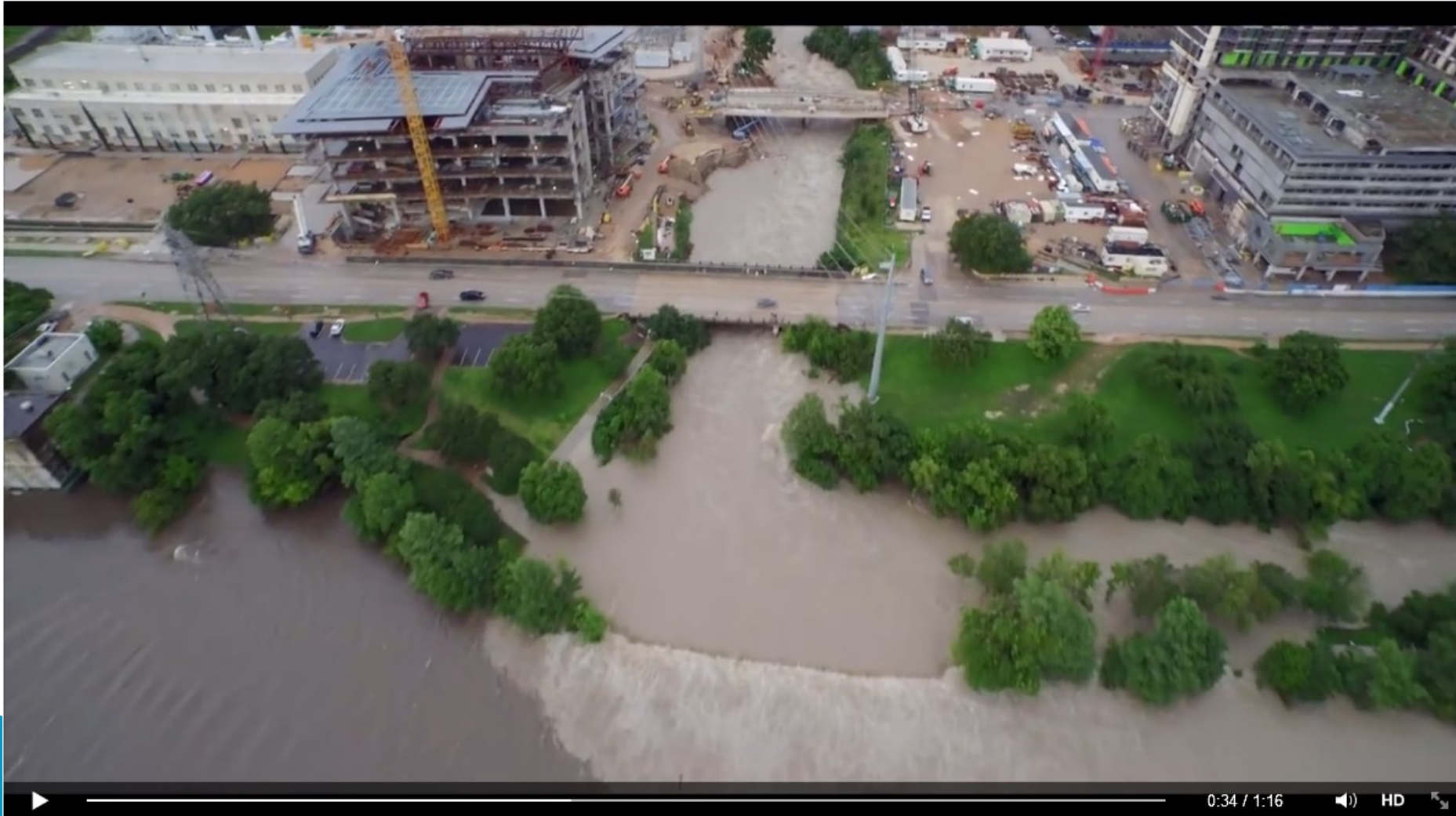
Watershed Protection Department



PROJECT AREA



May 25, 2015 – Approximately a 10-Year Flood Event
(Photo Taken From Facebook Video Post, DLR Productions)
Depth over Spillway in Photo Approx. 5 Feet

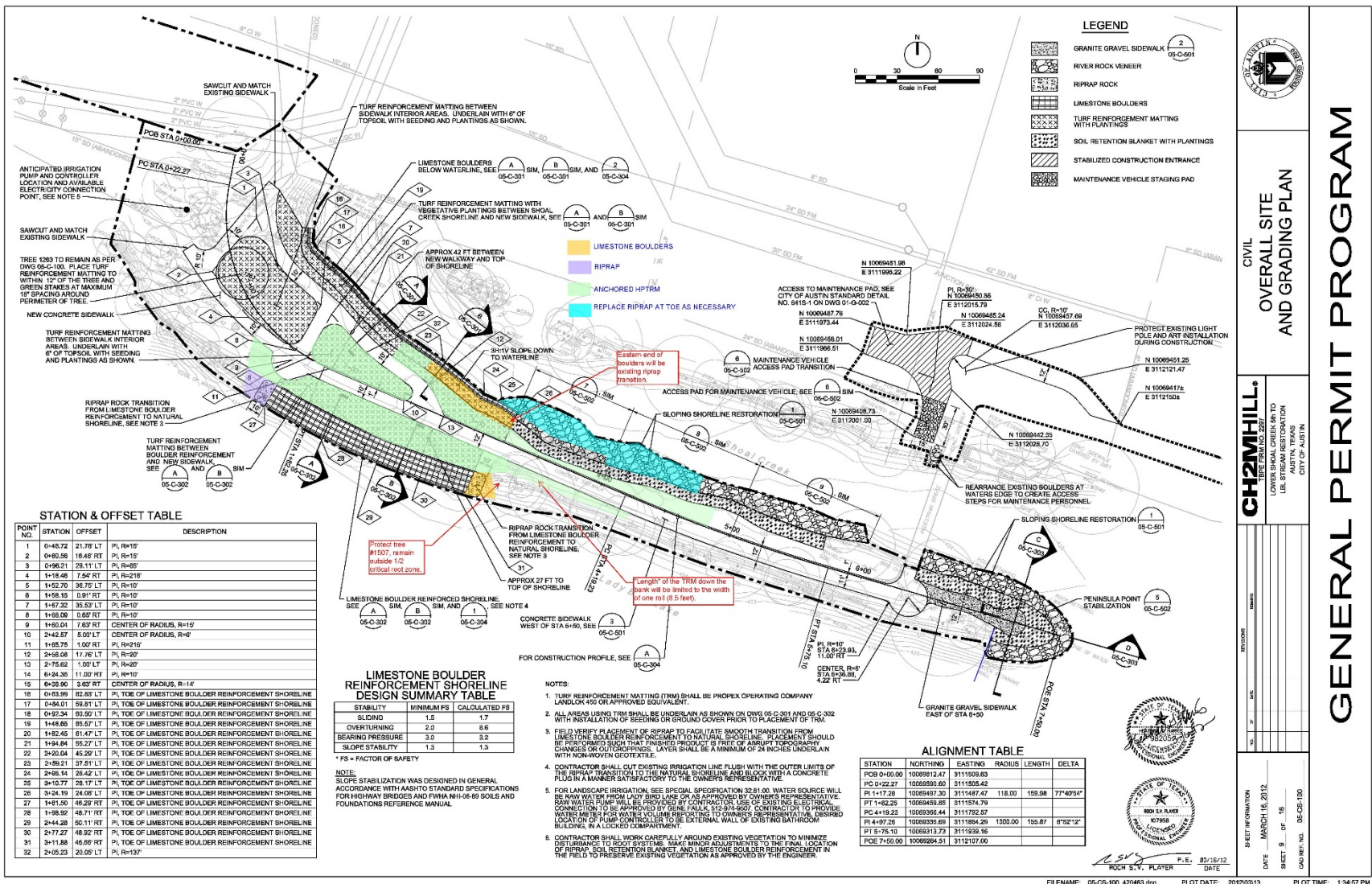


REPAIR SPILLWAY END TREATMENTS

- Spillway End Treatments Damaged



Repair Plan



GENERAL PERMIT PROGRAM

05-CS-100



REPAIR EROSION

- Erosion Damage from Shear forces
- Vegetation Not Yet Well Established at Time of Flood Event



REPAIR EROSION



Butler Trail Detour Required

-A temporary lane closure of a Eastbound lane of Cesar Chavez Street is required
Due to unsafe pedestrian conditions at Shoal Creek Bridge



Schedule Information

- Construction to begin July 27 – Trail use at a minimum due to heat and school recess
- Construction to be done by Watershed Protection Department Field Operations Crews
- Anticipate construction completion by early September
 - Existing parking lot will be closed during construction
 - Trail detour will be required during construction.
 - Trail to be opened for weekend use



Copyright © 2013 – City of Austin – Texas – All rights reserved
Images are property of the City of Austin

Cesar Chavez Traffic Control Plan

