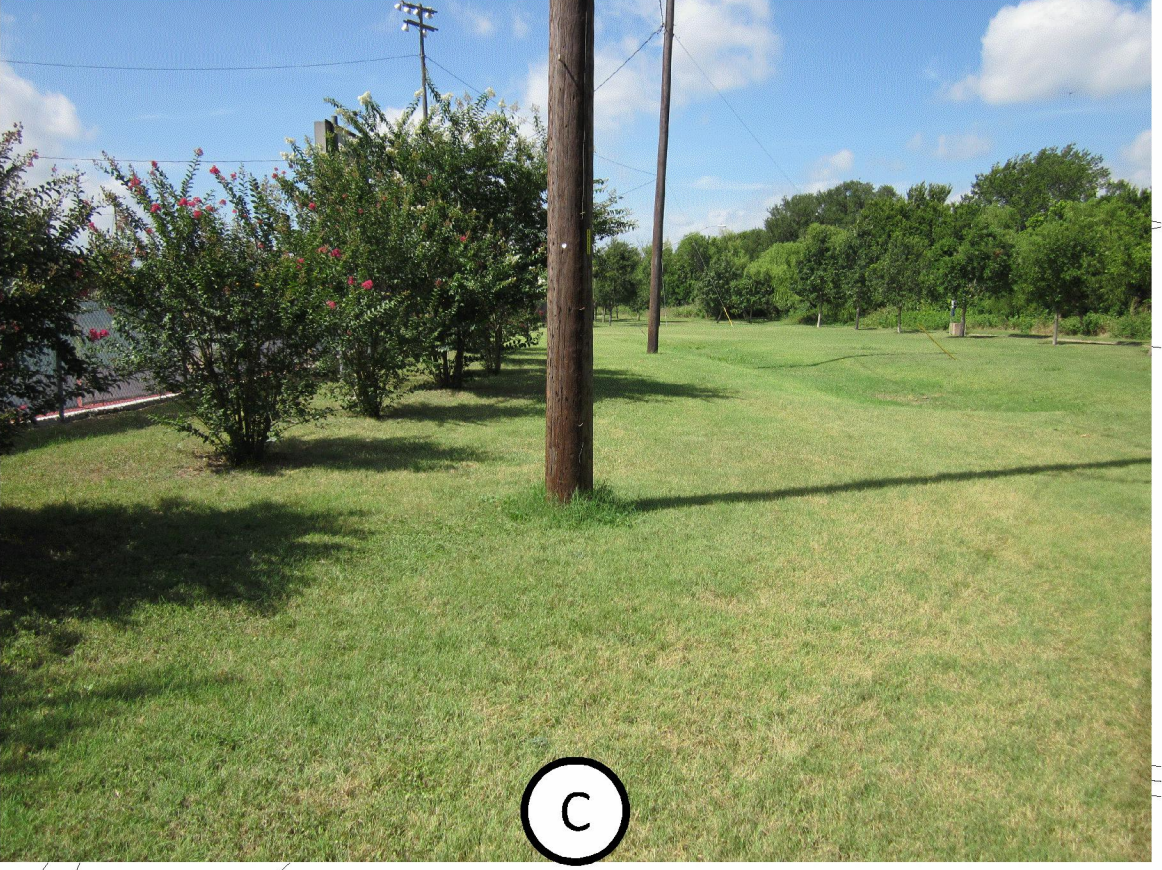
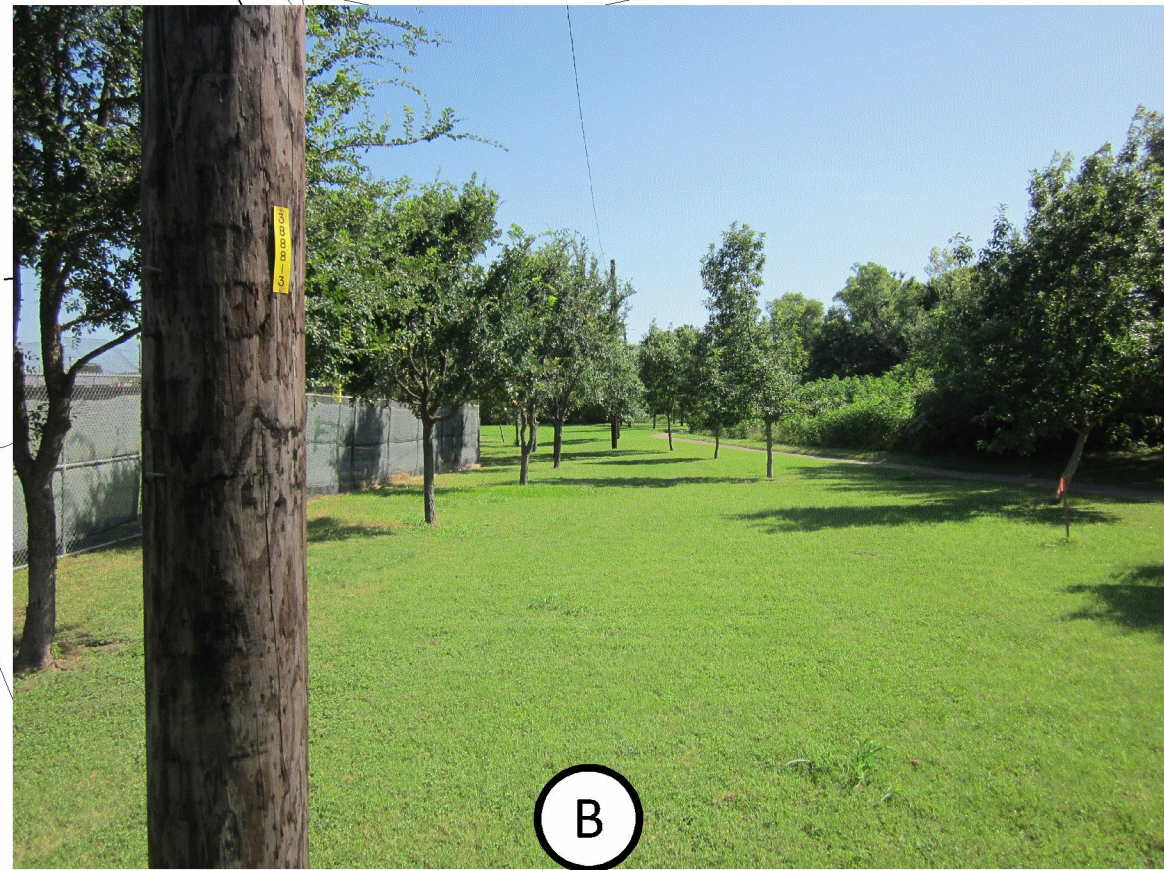
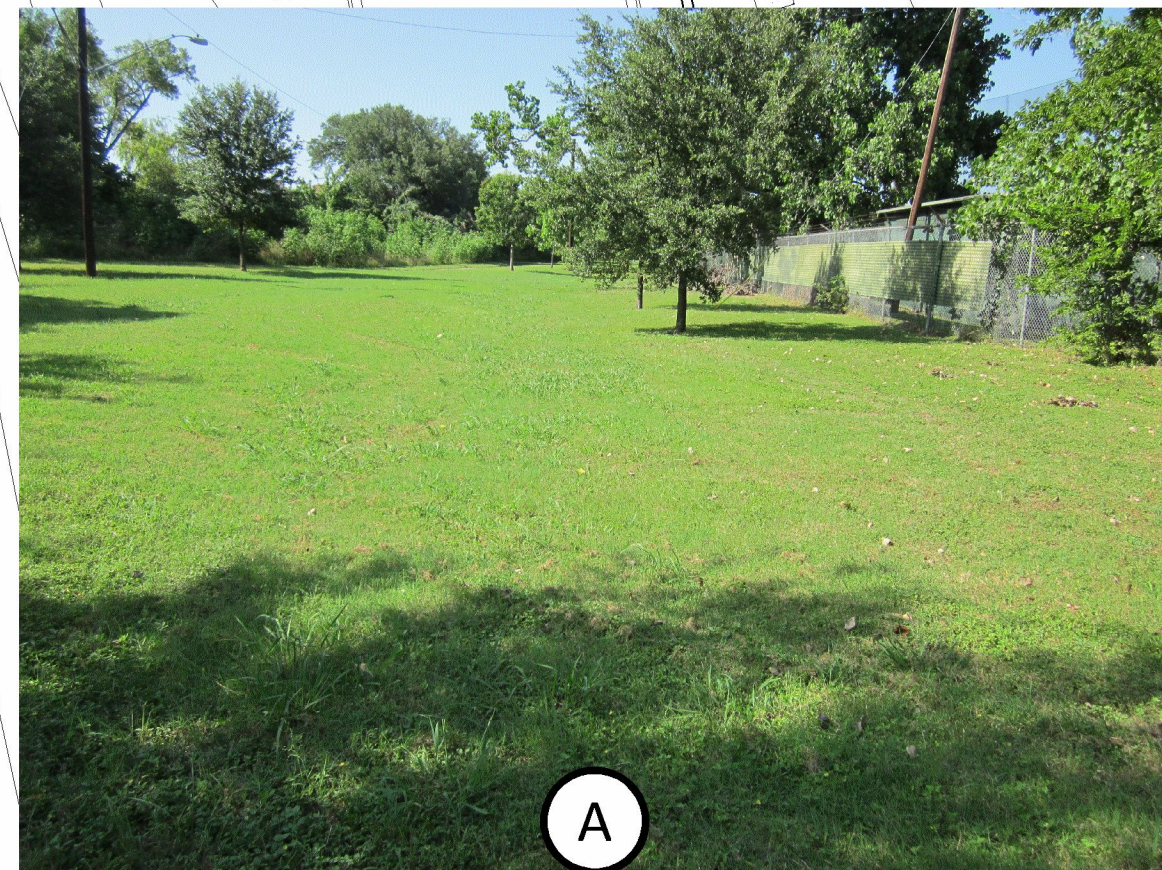
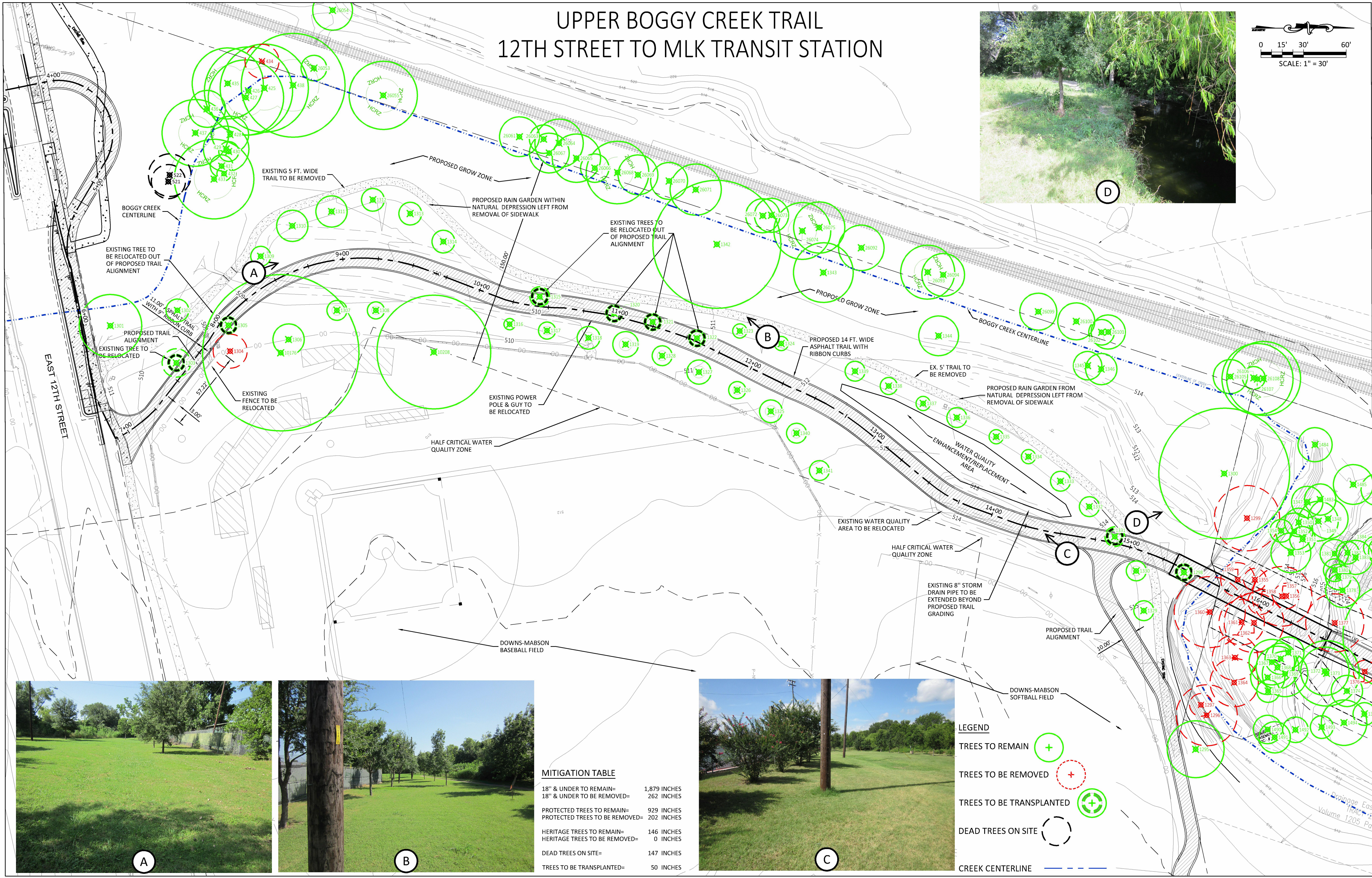
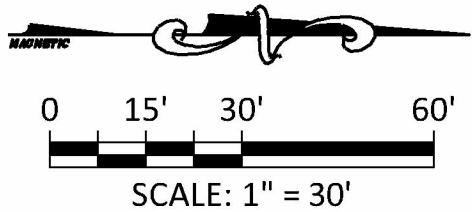


# UPPER BOGGY CREEK TRAIL 12TH STREET TO MLK TRANSIT STATION



MITIGATION TABLE	
18" & UNDER TO REMAIN=	1,879 INCHES
18" & UNDER TO BE REMOVED=	262 INCHES
PROTECTED TREES TO REMAIN=	929 INCHES
PROTECTED TREES TO BE REMOVED=	202 INCHES
HERITAGE TREES TO REMAIN=	146 INCHES
HERITAGE TREES TO BE REMOVED=	0 INCHES
DEAD TREES ON SITE=	147 INCHES
TREES TO BE TRANSPLANTED=	50 INCHES

### LEGEND

- TREES TO REMAIN
- TREES TO BE REMOVED
- TREES TO BE TRANSPLANTED
- DEAD TREES ON SITE
- CREEK CENTERLINE