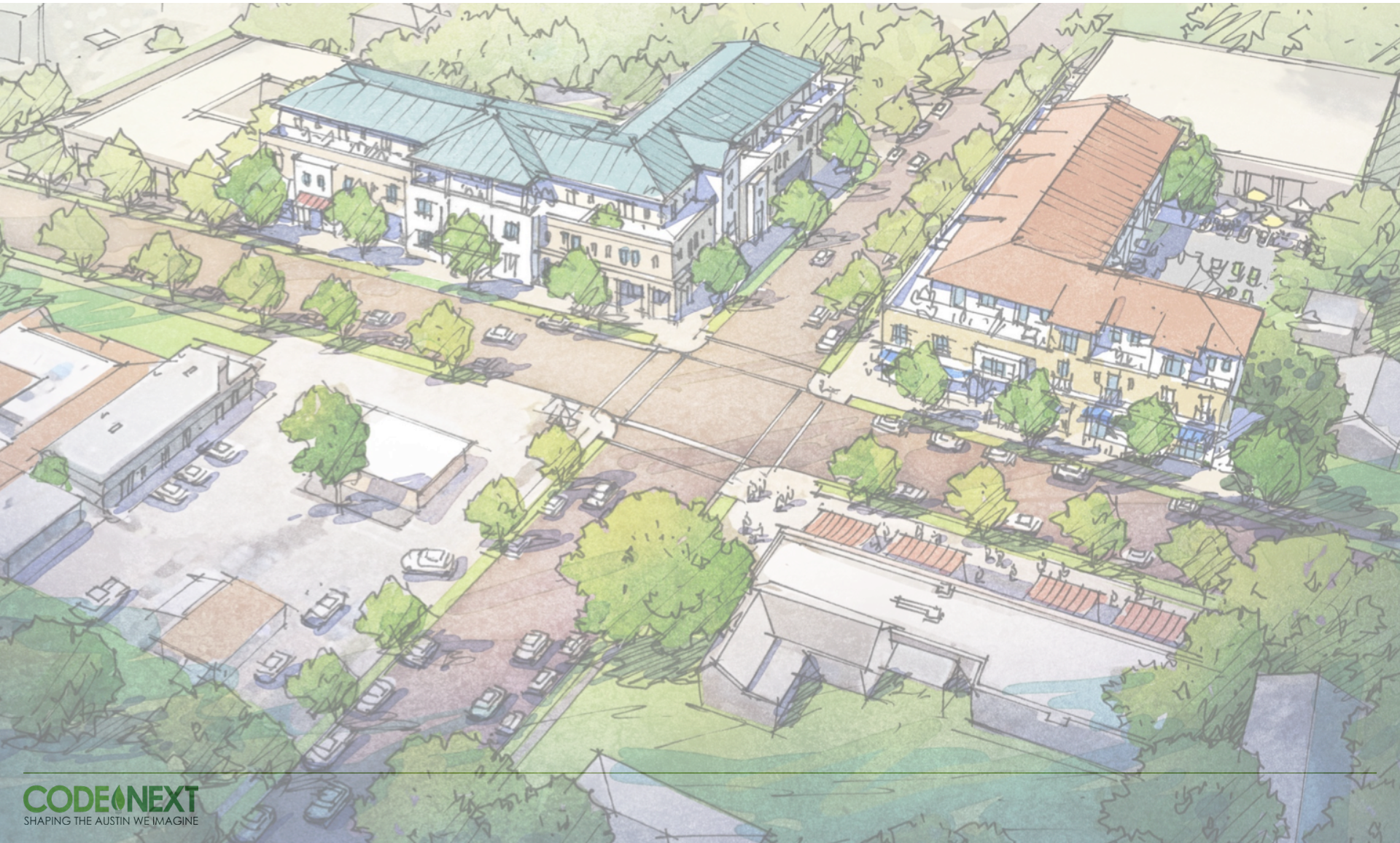


# Building Blocks of a Mapping Strategy

August 22, 2016

**CODENEXT**  
SHAPING THE AUSTIN WE IMAGINE  
**Code Development Team**





# What will inform Mapping?

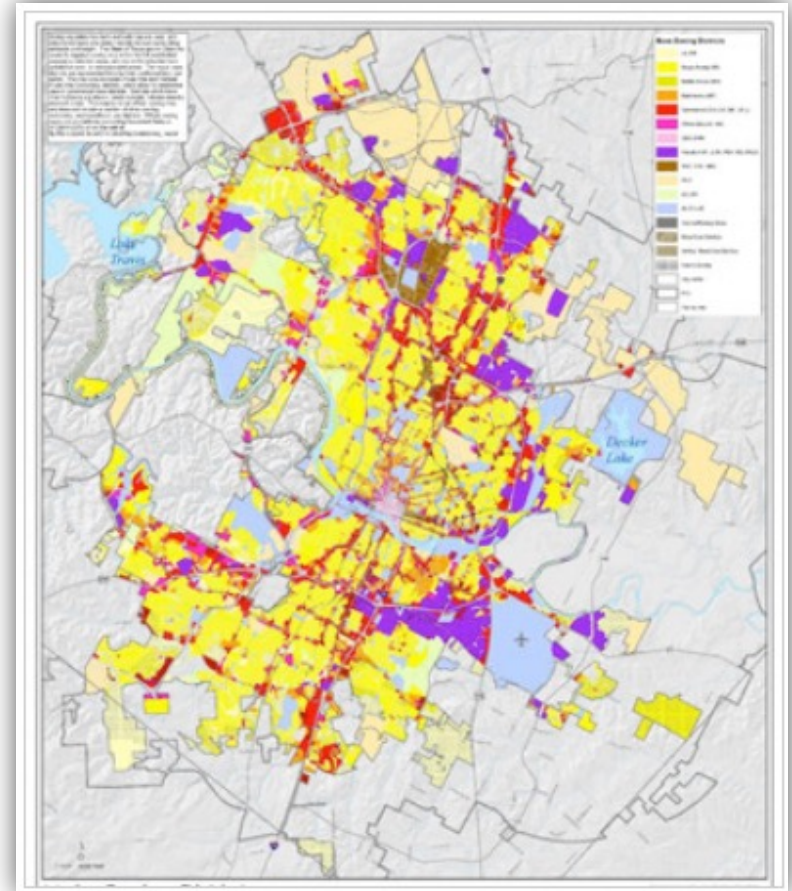




# Mapping Approaches

## Review of Mapping Approaches

1. New Code that uses existing district boundaries
2. Code first, map later based on priority
3. Code and map some areas based on priority
4. Code and map simultaneously



# How can mapping commence?

**To get to a mapping strategy, we need to study:**

1. Imagine Austin
2. Future land use maps and Neighborhood Plans
3. Existing land use and zoning patterns
4. Existing conditions, context, character



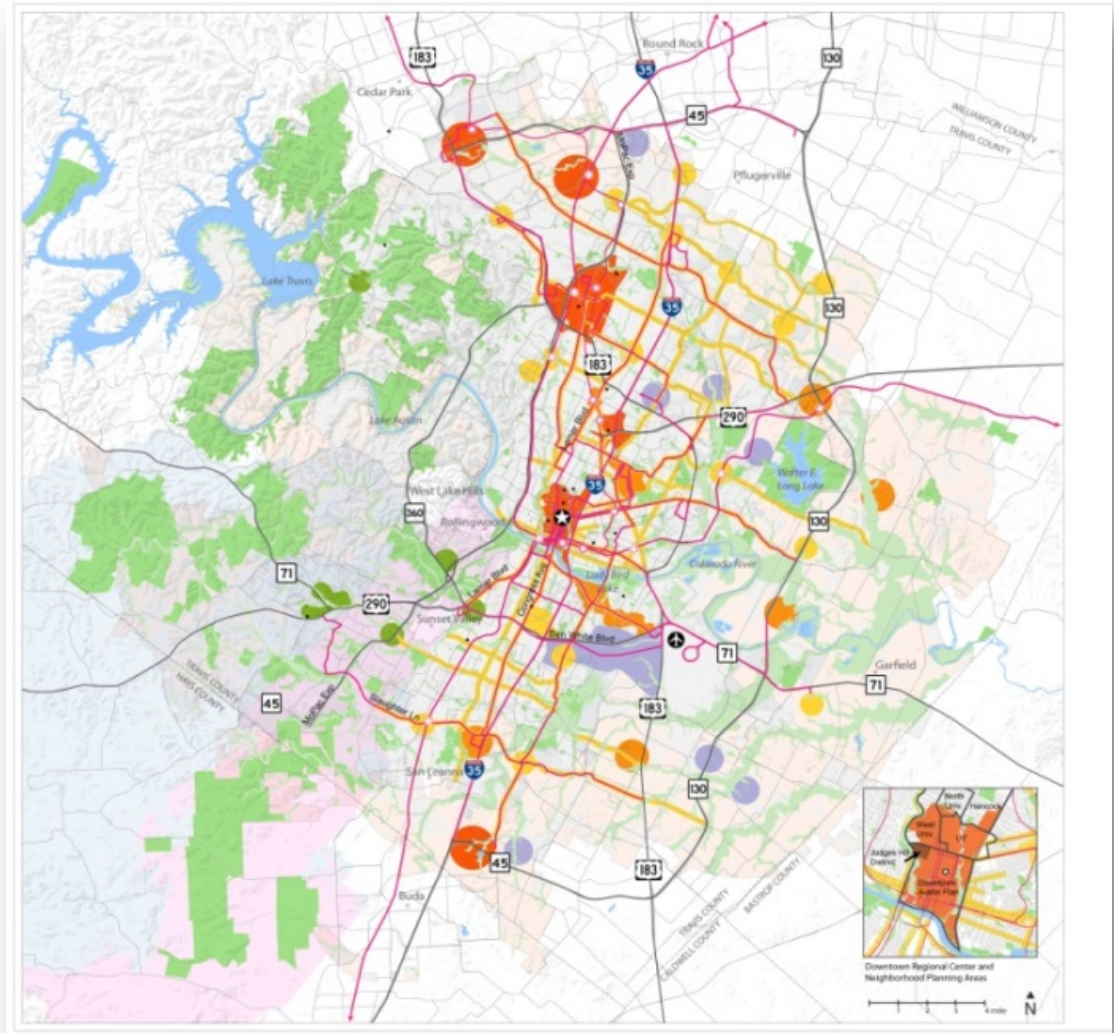


# How to get to a Mapping Strategy

## Imagine Austin

A **growth scenario** was created using public input, planned developments, and existing neighborhood plans to illustrate how Austin should grow through 2039.

The Growth Concept Map embodies the Imagine Austin vision statement and represents where the City will focus future investments to support **activity centers and corridors**, and an expanded transportation system.





# How to get to a Mapping Strategy

## Neighborhood Plans and Future Land Use Maps

- Neighborhood plans provide an opportunity for citizens to take an active role in the planning process and decide **how their neighborhoods will move into the future** while addressing land use, zoning, transportation and urban design issues.
- They include **vision recommendations** on growth, zoning changes, and specific land uses
- The **FLUMS** provide broad direction as to the type and location of future development. A FLUM depicts the **types of future development** using different colors for different types of development such as yellow for single-family, red for commercial, and green for parks and open space.



East Cesar Chavez FLUM



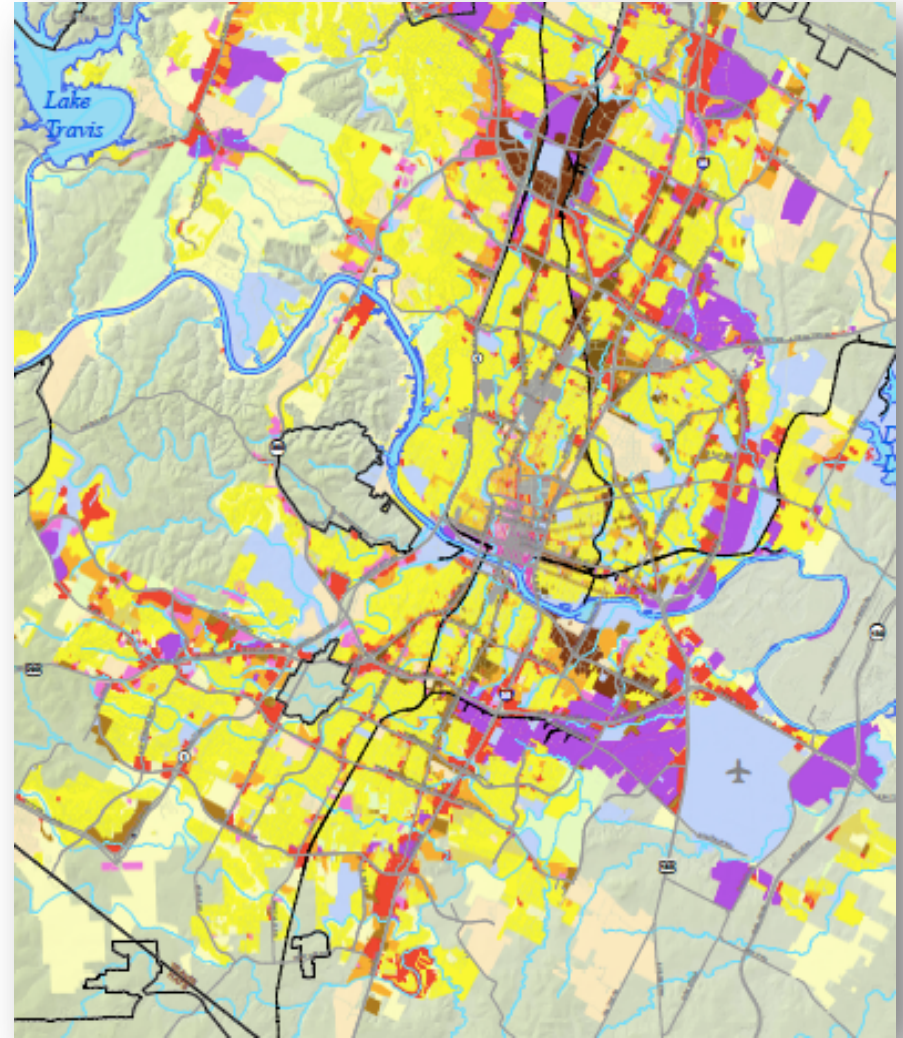
# How to get to a Mapping Strategy

## Existing land use and zoning

Analyze **land use and zoning patterns** along:

- Major and minor corridors;
- Established neighborhoods;
- Areas abutting corridors;
- Fast growing areas with emphasis on density trends; and
- Physical impacts of zoning regulations on existing development.

Composite Zoning Map





# How to get to a Mapping Strategy

## Existing conditions, context, character



The **Community Character Manual** provides maps and photographs of the neighborhood reporting areas and begins to define different broad contexts that exist in Austin.

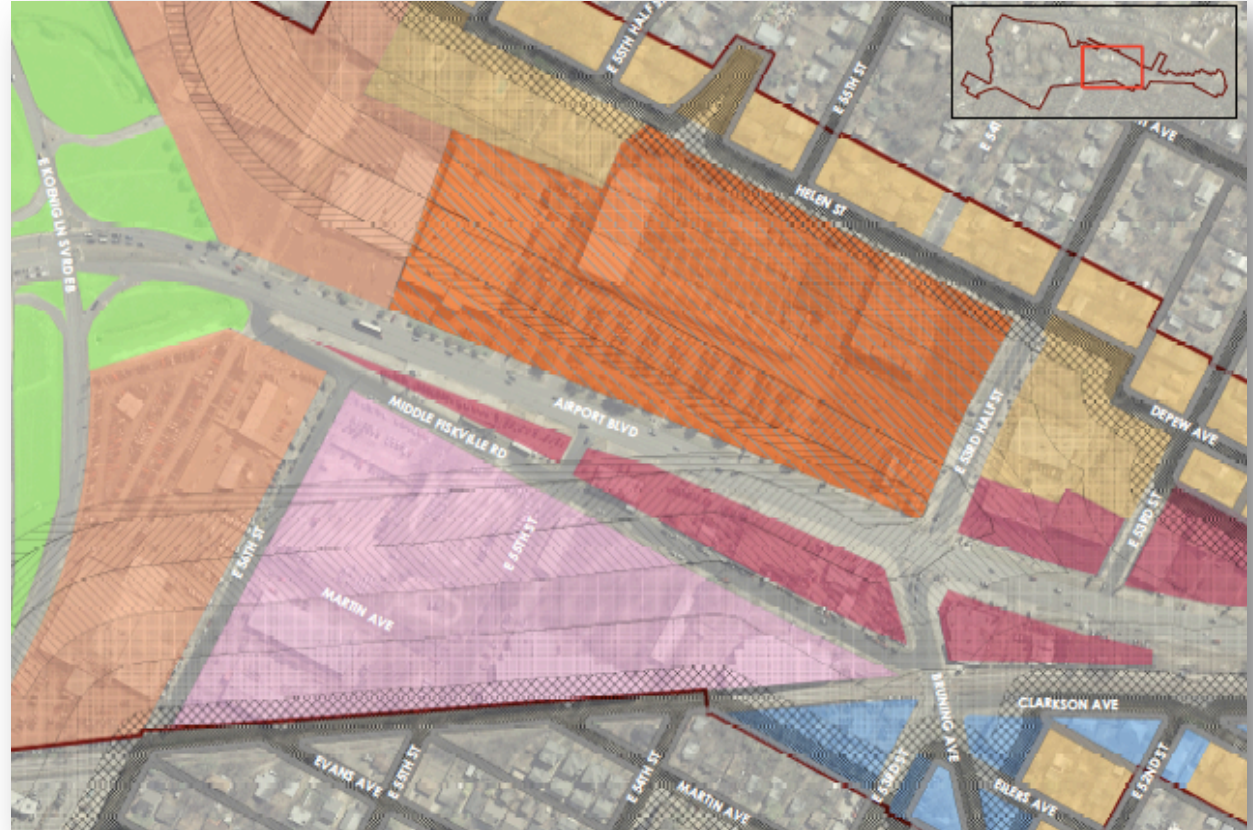
## Different contexts for different places



# Local Mapping Example

## Airport Boulevard

- Existing conditions;
- Existing land use and zoning;
- Neighborhood Plan recommendations;
- Effects of Compatibility; and
- Character District Integration.

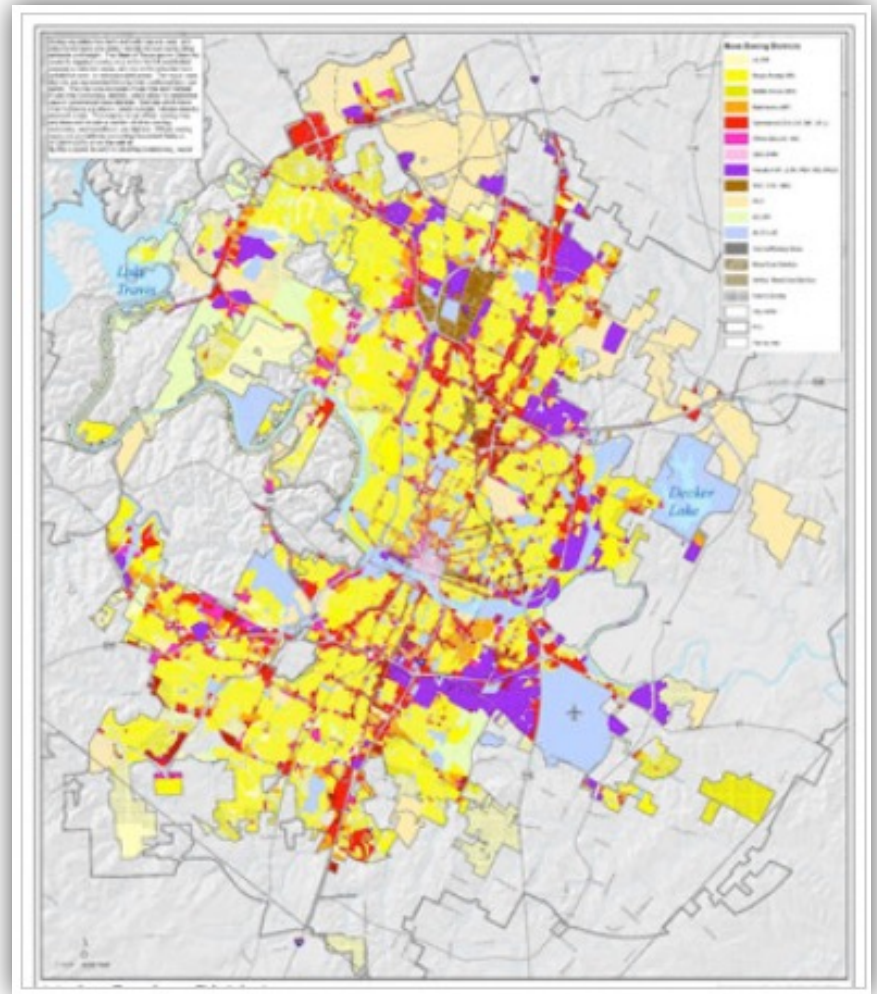




# Mapping Approach

## Next Steps

1. Craft a **draft** approach for discussion;
2. Outline how mapping will be applied;
3. Outline the integration of Imagine Austin and Neighborhood Plans; and
4. Solicit CAG feedback on approach





# Questions?

**CODENEXT**

SHAPING THE AUSTIN WE IMAGINE

Code Development Team

