



hill country alliance



Toward a Regional Plan for the Texas Hill Country

*Dripping Springs
Photo by: Tom Zinn
Source: Camp Lucy*

Presentation Overview

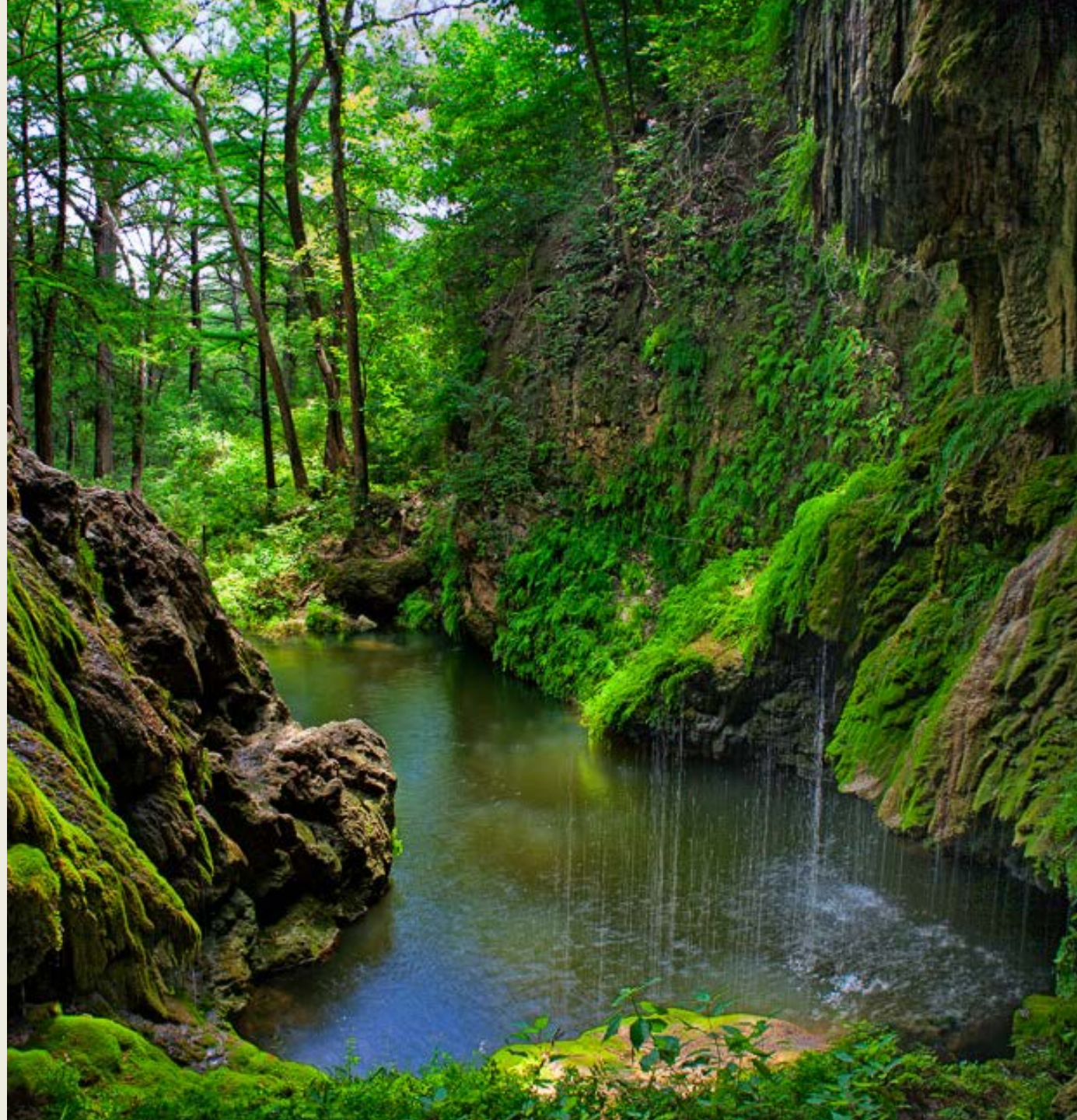
- Who is the Hill Country Alliance
- Value of the Hill Country to Austin
- Growth and its Impacts
- UT Design Studio
- Opportunity for collaboration





Value of the Hill Country:

- Water
- Clean Air
- Flood Mitigation
- Recreation
- Regional Identity
- Habitat
- Quality of Life
- Culture & History
- Economic Driver





facebook

USF[®]
US FARATHAN
CORPORATION

SAMSUNG

Google



STI legalzoom[®]

ebay



Host Gato[®]



Dimensional
DIMENSIONAL FUND ADVISORS LTD. TM

BLIZZARD



OneWest Bank

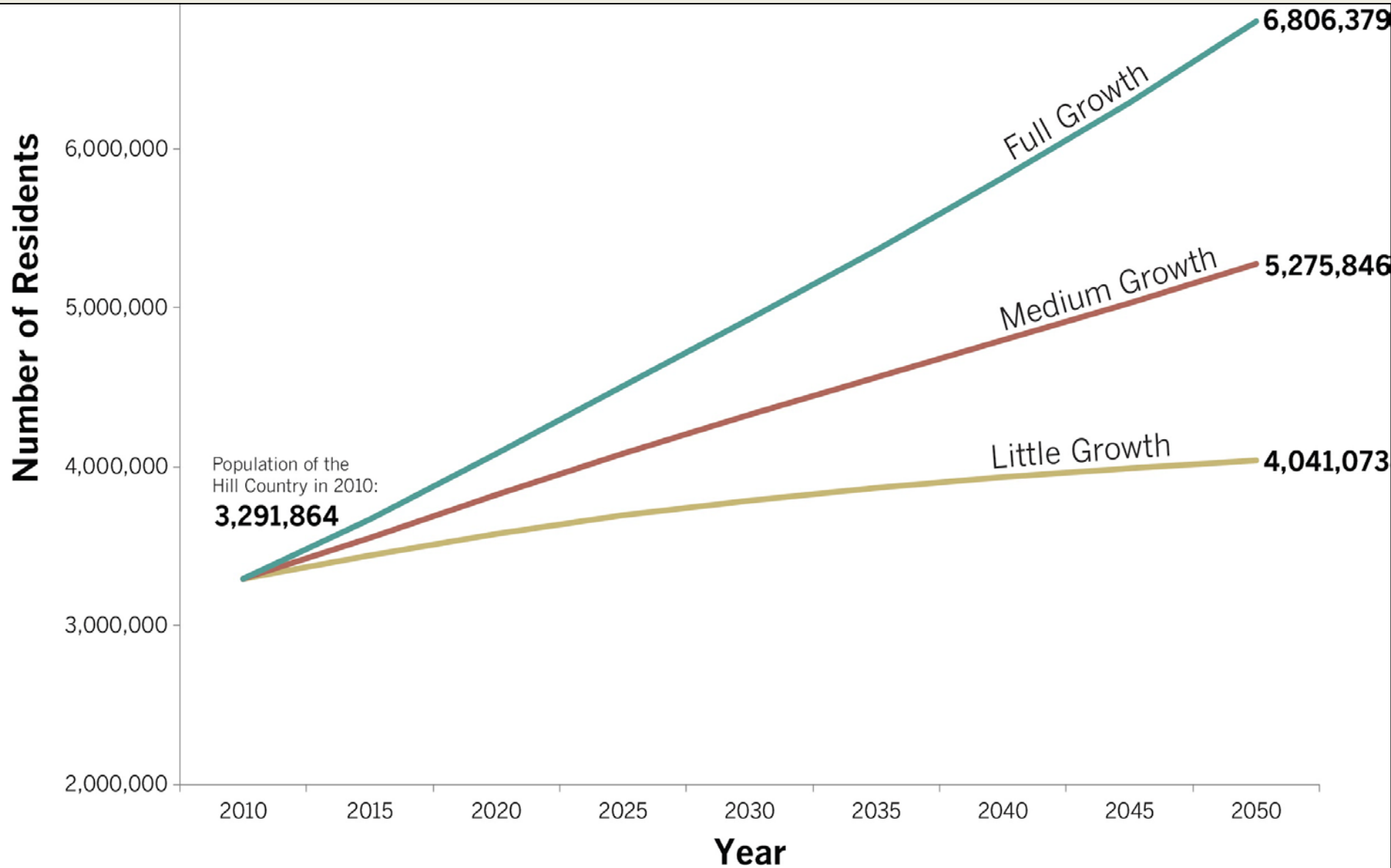
EA

ENTERTAINMENT

SUNPOWER[®]



Hill Country Population Projections

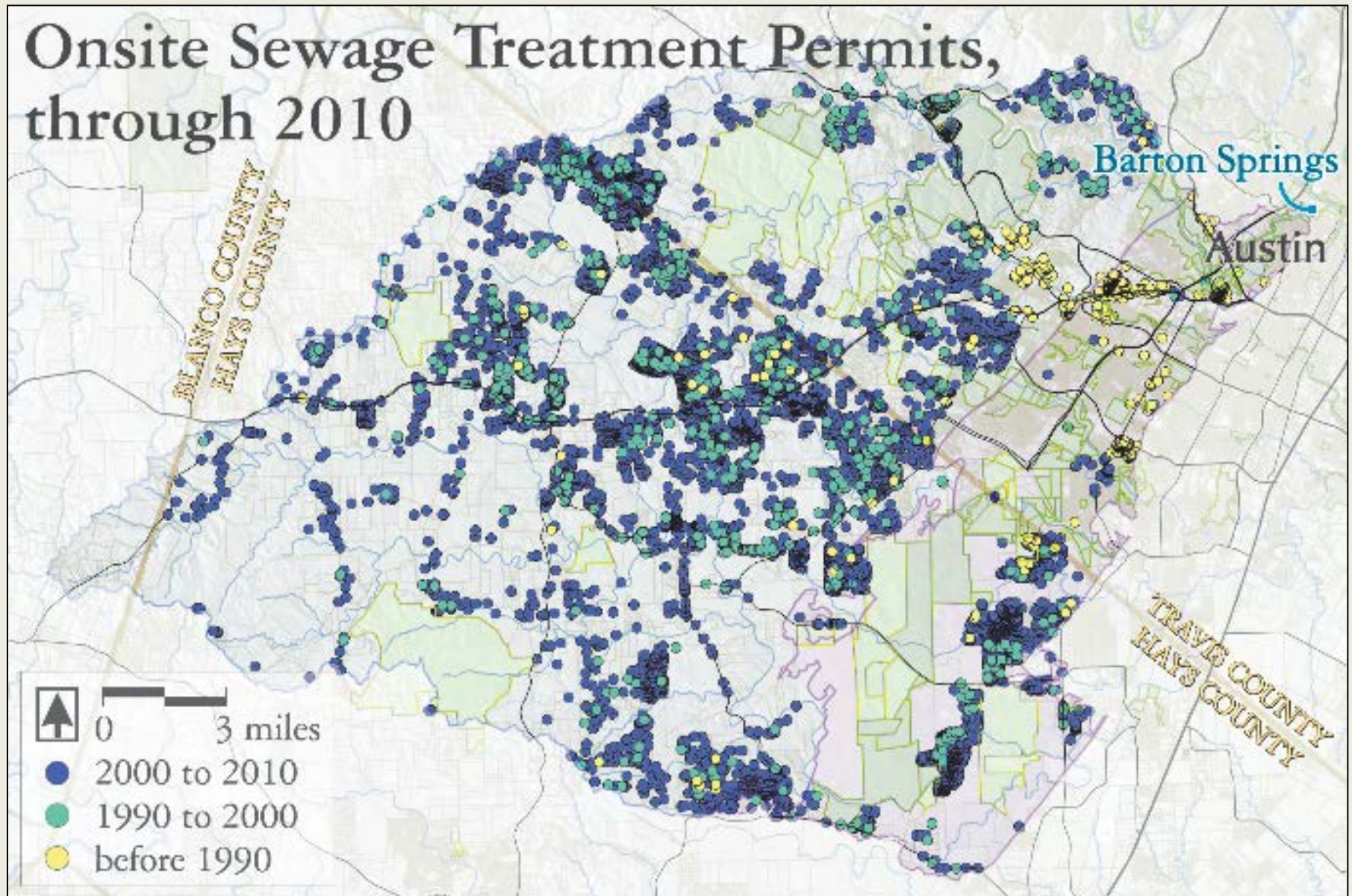








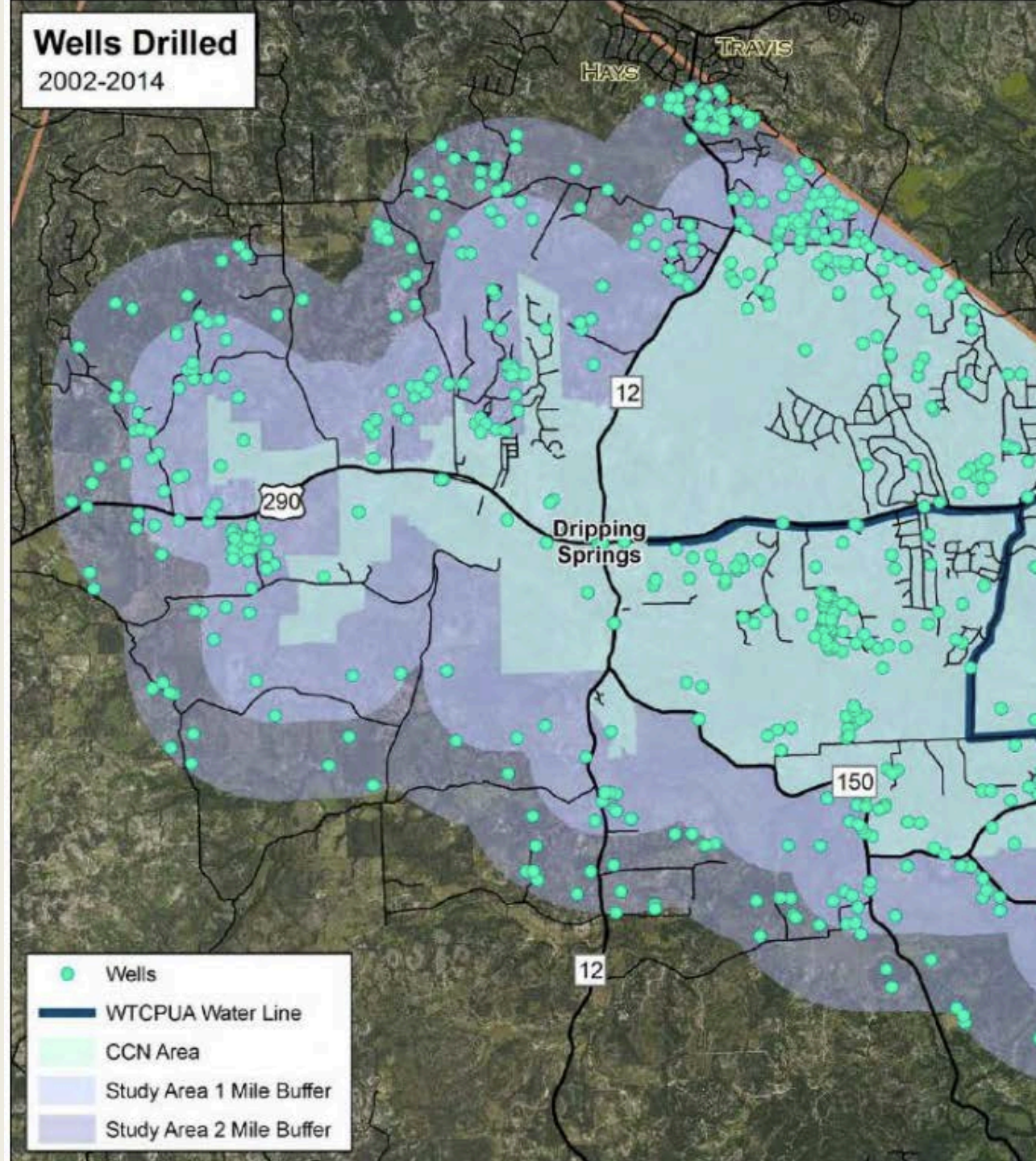
WATER QUALITY: Change in the Barton Springs Watershed



WATER QUANTITY

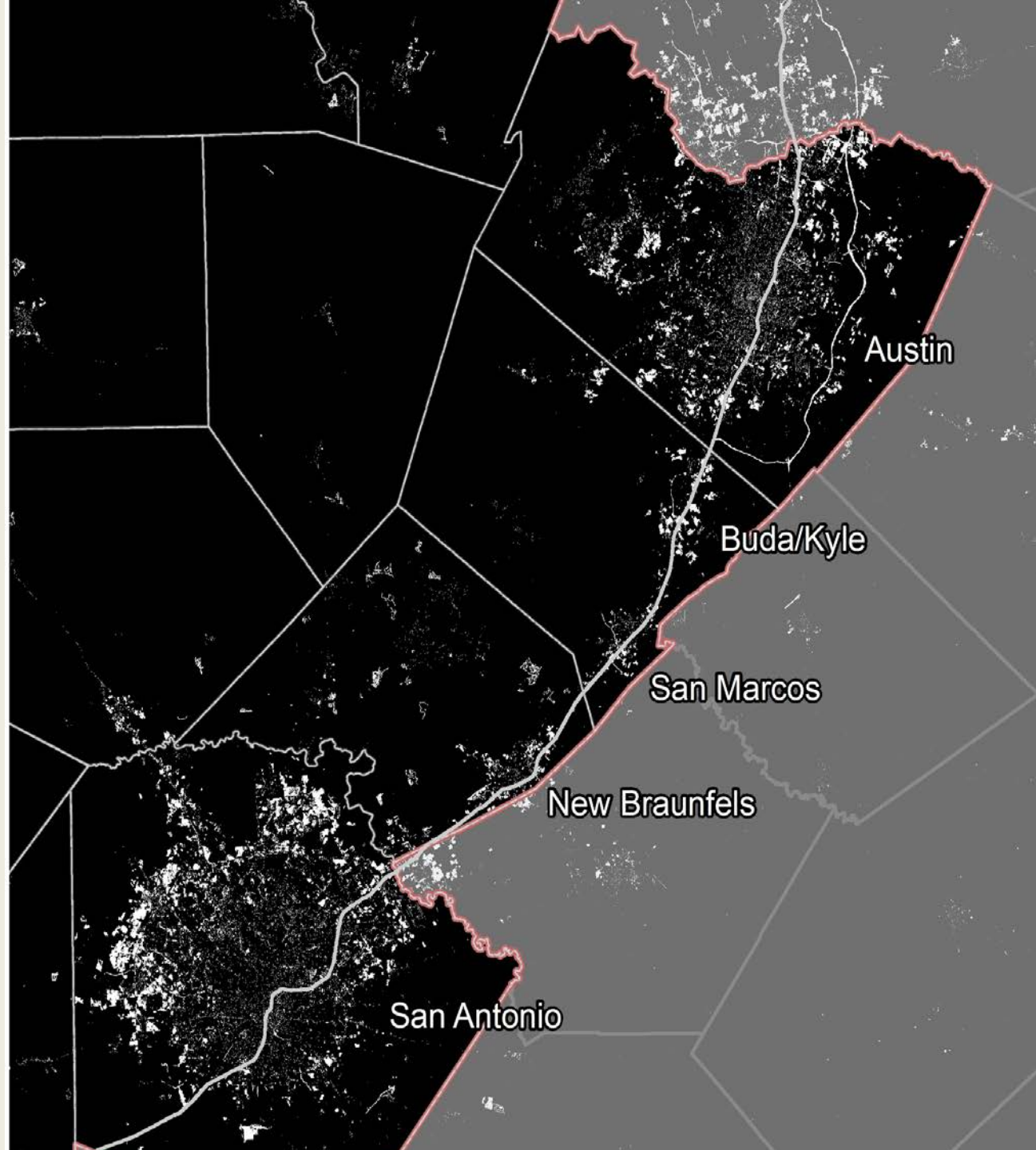
Groundwater Demand in Dripping Springs:

- More wells
- Estimated 3.5 million gallons per year in 2002
- Estimated 88 million gallons per year 2014.
- 2,354% increase.
- Impacts on spring flow?

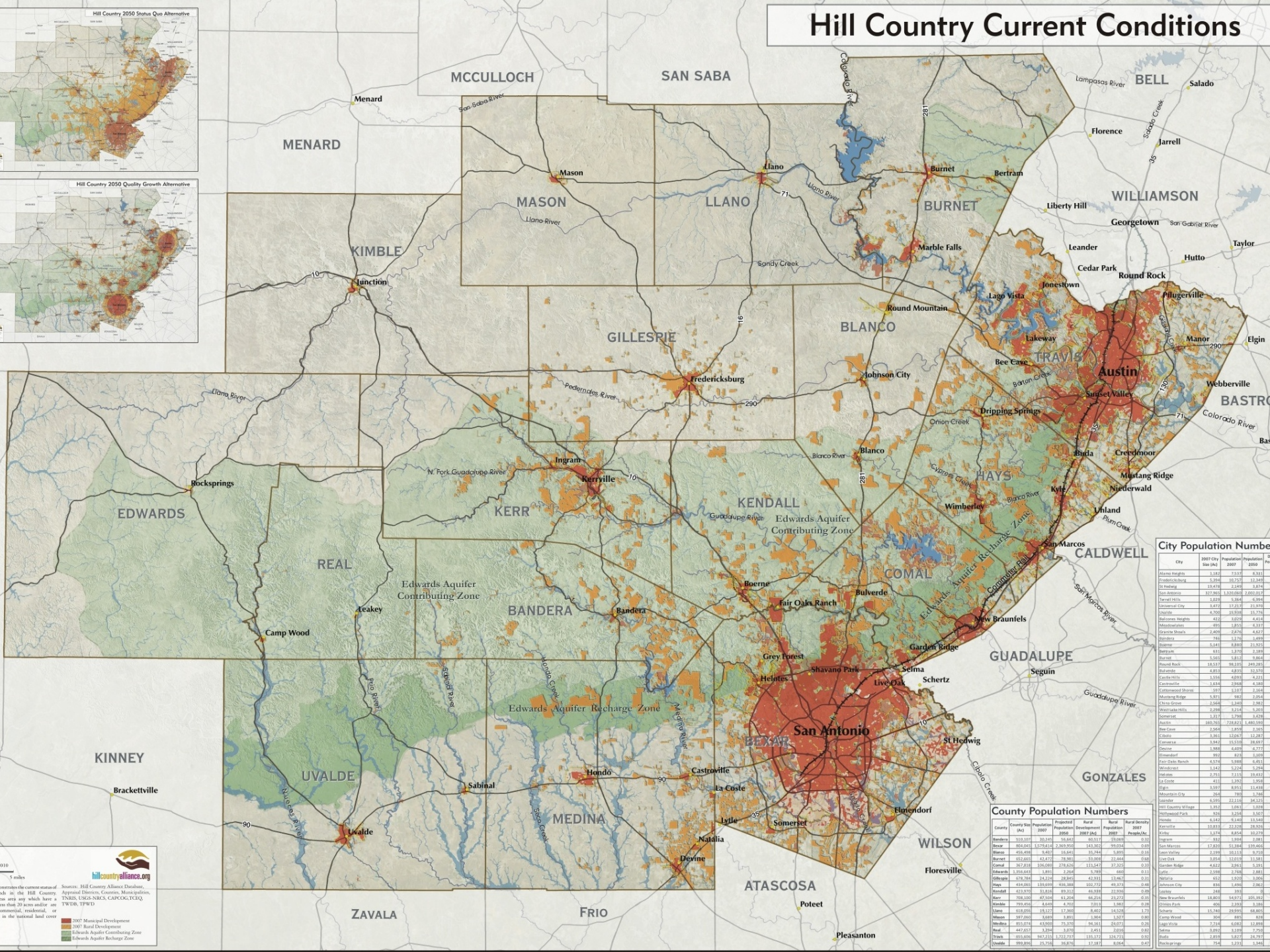


Increased impervious cover 2000 to 2010:

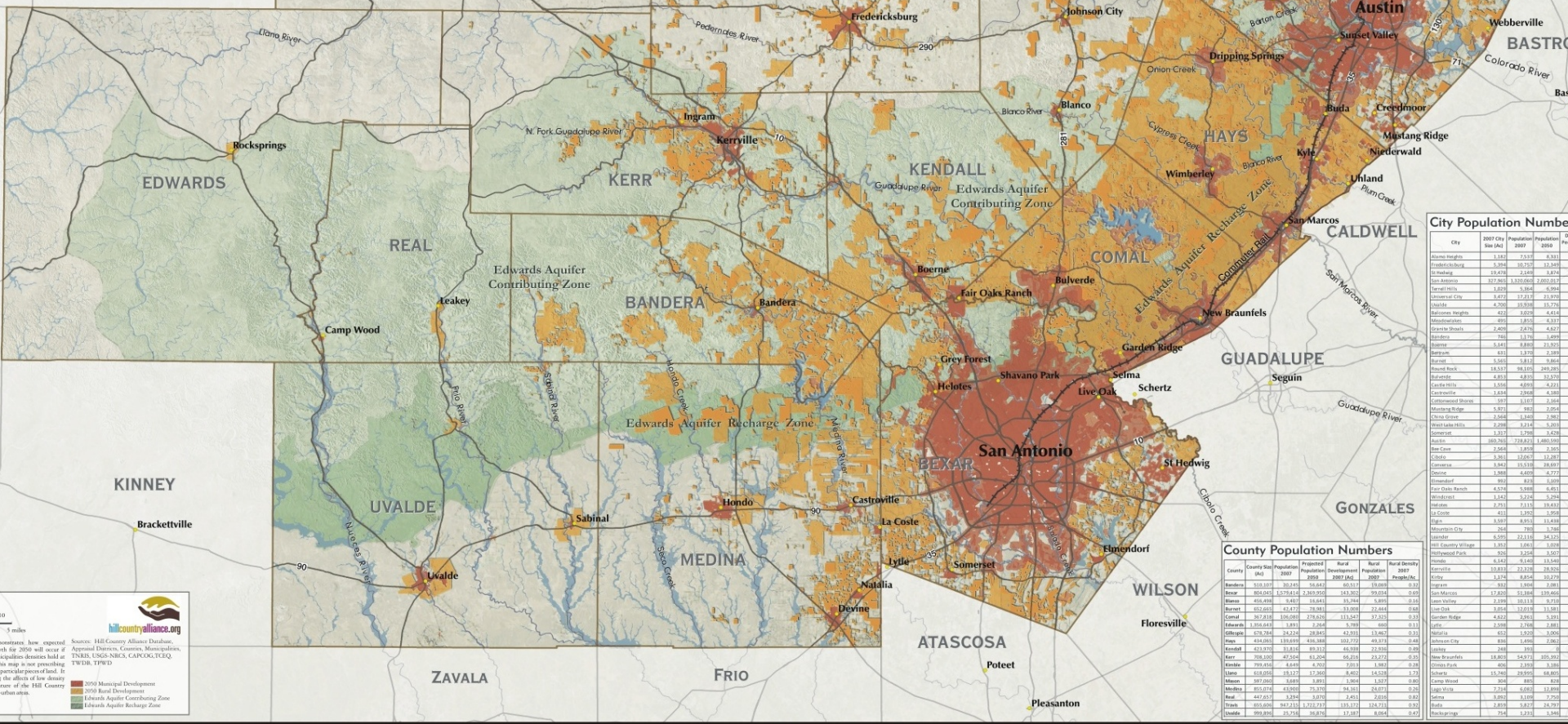
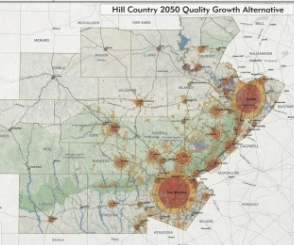
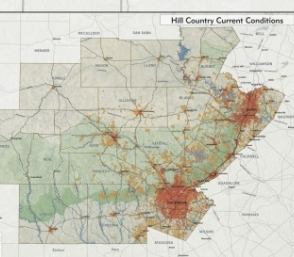
- 50,000 acres
- Preventing recharge and filtration
- Exacerbating flooding



Hill Country Current Conditions



Hill Country 2050 Status Quo Alternative

City Population Number

City	2007 Site (Ac)	Prehistoric 2007	Prehistoric 2008	Do F
Alamo Heights	1,140	75,315	8,811	
Albany	1,300	1,300	1,300	
Albany, Ga.	1,300	1,300	1,300	
Albany, Mo.	1,300	1,300	1,300	
Albany, N.Y.	1,300	1,300	1,300	
Albany, Or.	1,300	1,300	1,300	
Albany, S.D.	1,300	1,300	1,300	
Albany, W.V.	1,300	1,300	1,300	
Albany, Wyo.	1,300	1,300	1,300	
Albany, Z.	1,300	1,300	1,300	
Albany, A.	1,300	1,300	1,300	
Albany, B.	1,300	1,300	1,300	
Albany, C.	1,300	1,300	1,300	
Albany, D.	1,300	1,300	1,300	
Albany, E.	1,300	1,300	1,300	
Albany, F.	1,300	1,300	1,300	
Albany, G.	1,300	1,300	1,300	
Albany, H.	1,300	1,300	1,300	
Albany, I.	1,300	1,300	1,300	
Albany, J.	1,300	1,300	1,300	
Albany, K.	1,300	1,300	1,300	
Albany, L.	1,300	1,300	1,300	
Albany, M.	1,300	1,300	1,300	
Albany, N.	1,300	1,300	1,300	
Albany, O.	1,300	1,300	1,300	
Albany, P.	1,300	1,300	1,300	
Albany, Q.	1,300	1,300	1,300	
Albany, R.	1,300	1,300	1,300	
Albany, S.	1,3			

County Population Numbers

Country	Census (thousands)	Population 2007	Projected Population 2017	Rural Development 2007-2017	Rural Population 2007	Rural Population 2017	Rural Dev. 2007-2017
Bandera	531,357	20,245	26,645	40,537	19,008		
Bencar	804,045	15,791,614	15,569,550	143,302	99,684		
Burundi	458,498	4,407	16,641	35,744	35,744		
Burmet	132,665	41,473	78,305	33,009	22,444		
Cameroon	1,712,218	16,218,560	18,218,560	199,317	37,325		
Cameroon	1,506,643	1,991	2,264	5,789	400		
Chad	478,784	24,224	28,545	43,351	13,467		
Chad	454,085	49,939	63,388	102,772	49,939		
Kenya	427,937	31,616	39,116	46,939	22,376		
Kenya	708,149	56,456	62,364	66,218	23,522		
Kenya	709,849	56,456	62,364	66,218	23,522		
Kenya	630,654	19,127	17,860	8,402	14,578		
Kenya	587,060	3,689	3,931	3,964	3,931		
Malawi	953,074	43,009	53,730	84,361	24,031		
Malawi	767,573	34,000	40,000	66,000	24,000		
Malawi	653,006	947,215	1,222,715	135,172	124,715		
Uganda	999,896	25,758	36,667	17,387	18,718		

















Toward a Regional Plan for the Texas Hill Country

*Dripping Springs
Photo by: Tom Zinn
Source: Camp Lucy*

Hill Country Endowment

Directs funding to:

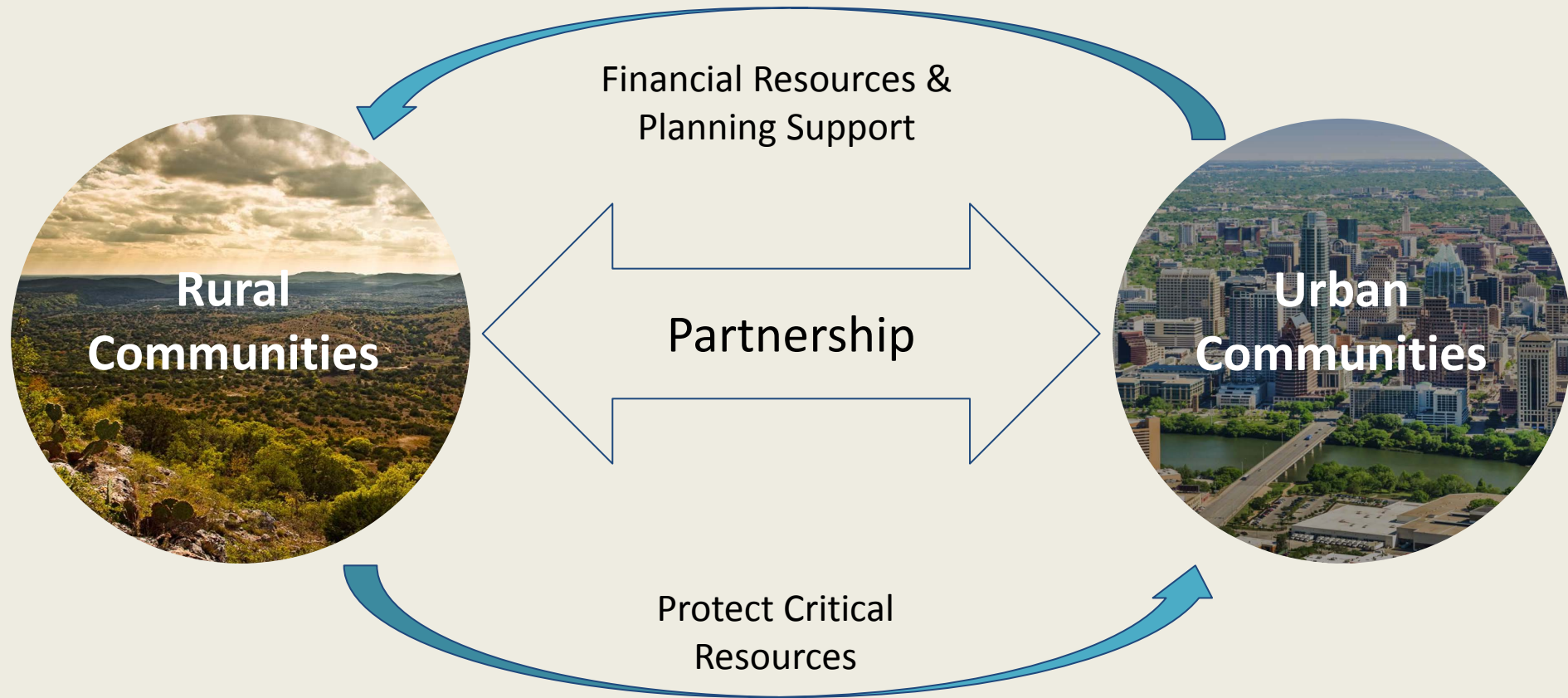
- Resource Protection
- Infrastructure improvements
- Regional Transit
- Density and Affordability

Regional collaboration between:

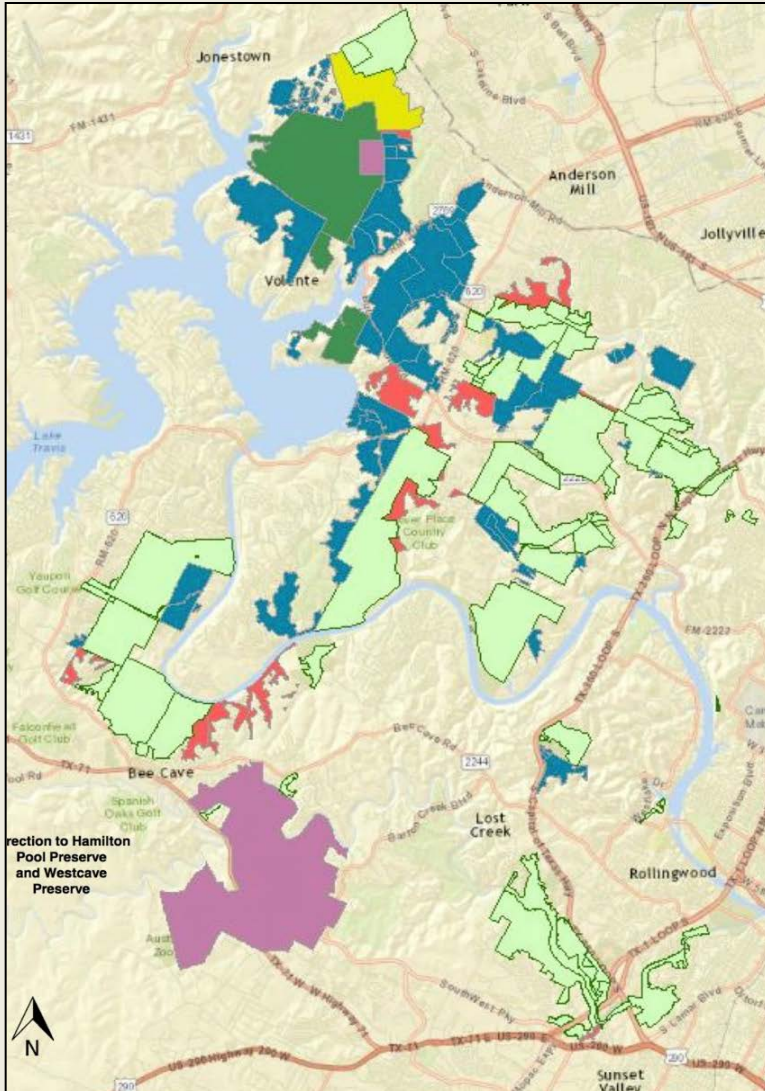
- Private Corporations
- Foundations
- Government



Hill Country Endowment



Hill Country Endowment: Local Precedents

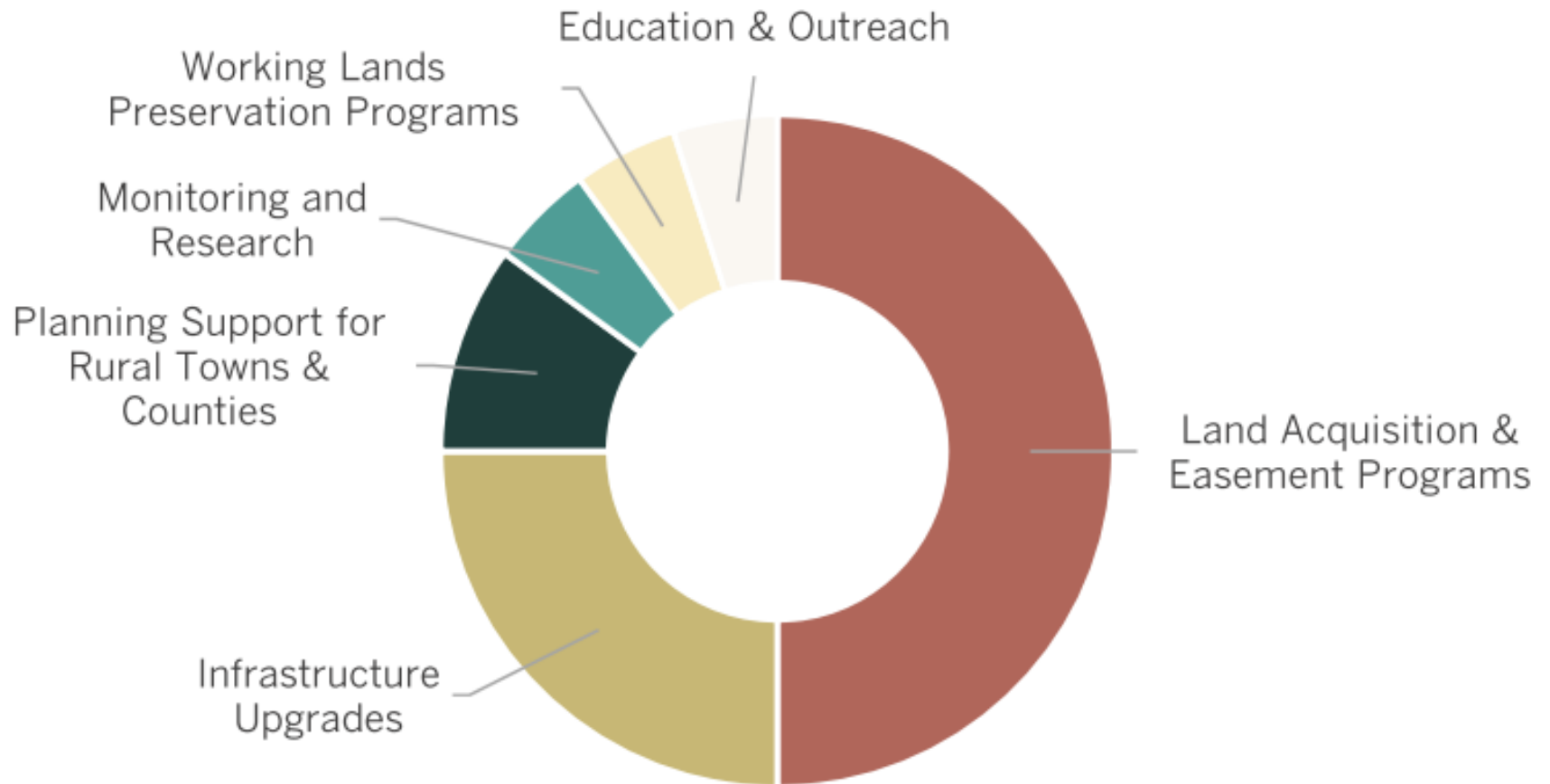


Balcones Canyonlands Preserve and Water Quality Protection Lands:

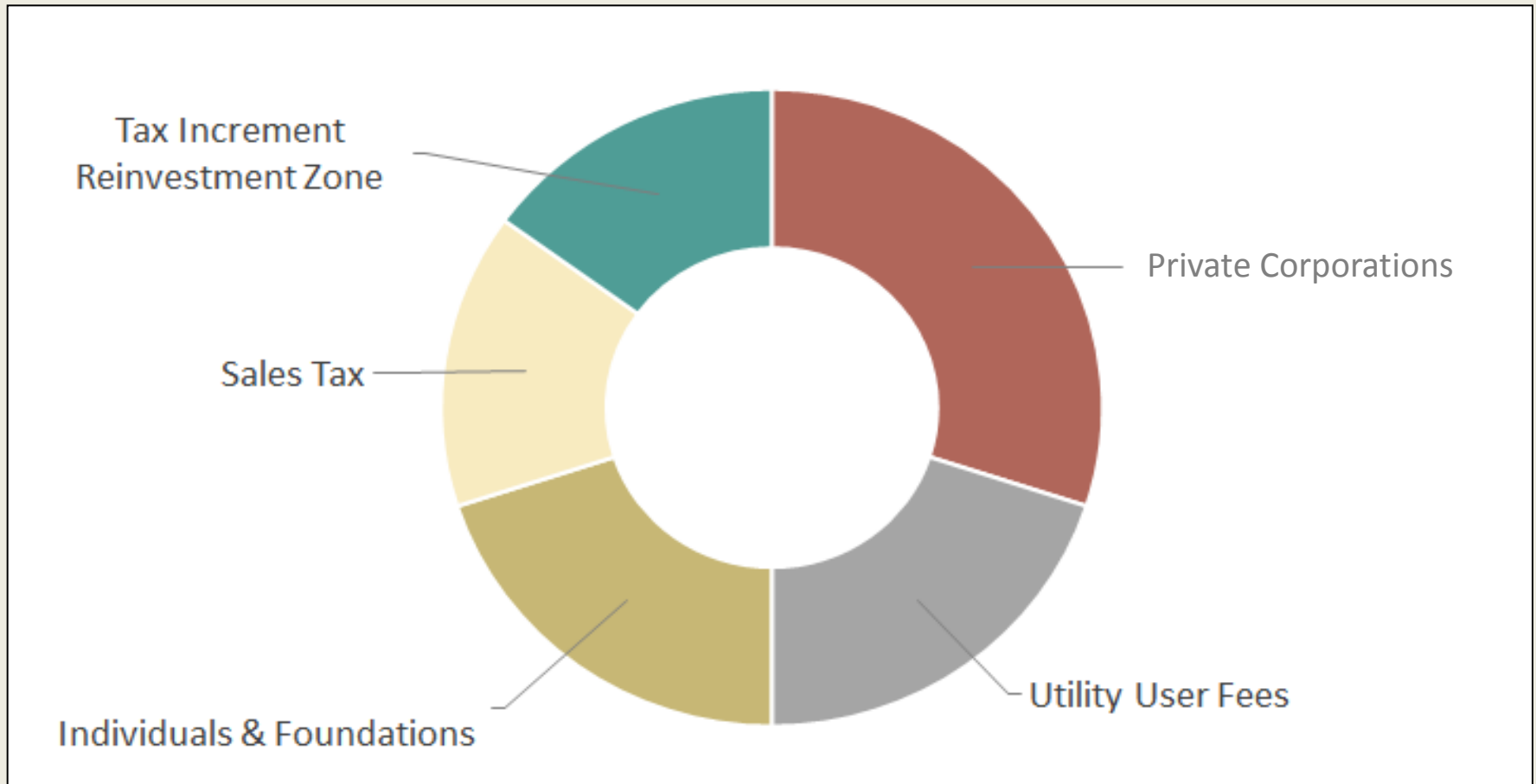
- Voters approved 9 bonds in 6 elections
- Between 1992 and 2012
- Investing approximately \$265 Million
- Conserving approximately 58,000 acres

Similar Success Story in San Antonio (\$325 million, 136,000 acres)

Hill Country Endowment: Potential Allocation of Funds



Hill Country Endowment: Diverse Funding Sources



Hill Country Endowment: Next Steps

HCA's Steps Moving forward:

- Fostering collaboration
- Soliciting support from other corridor cities
- Convening rural community leaders
- Exploring financial opportunities and legislative constraints



Hill Country Endowment: Next Steps

Partnership with the City of Austin:

- Austin City Council / Parks and Recreation Board statement of support
- Allow Hill Country Alliance to return in the Spring to update Parks and Recreation Board





Katherine Romans | katherine@hillcountryalliance.org | 512.410.9368
www.hillcountryalliance.org