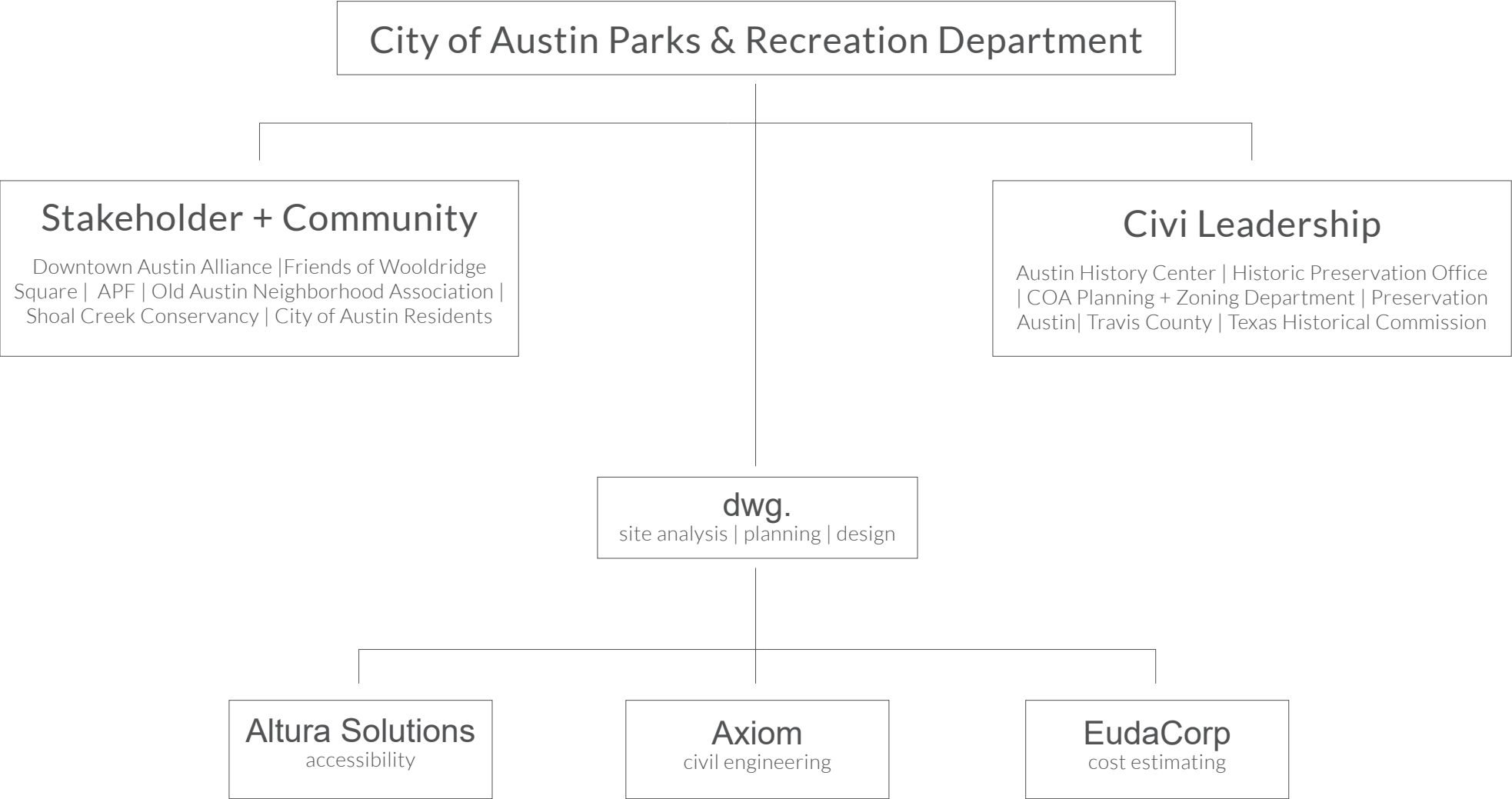




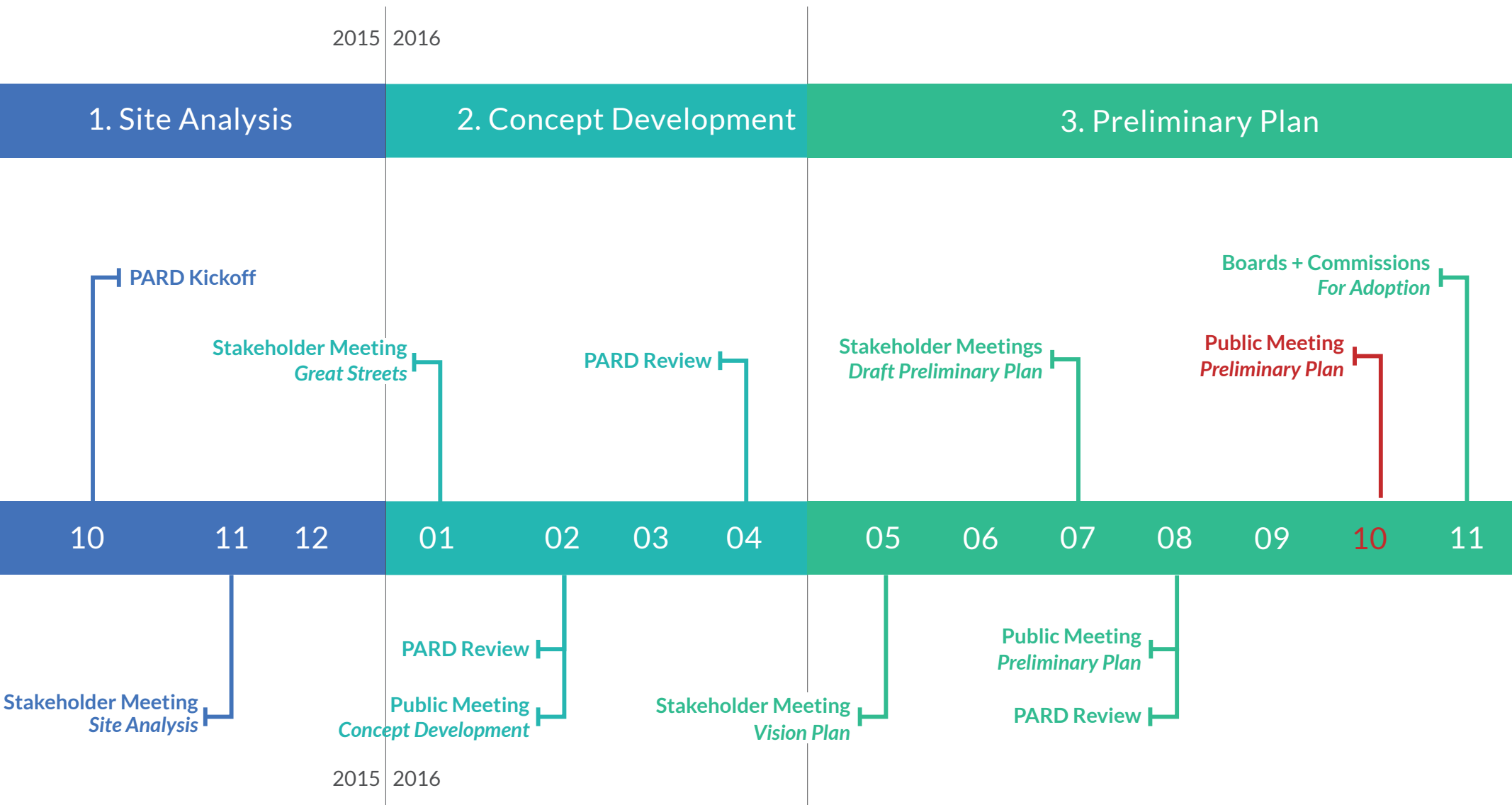
WOOLDRIDGE SQUARE PRELIMINARY PLAN

Public Meeting #3 | October 25, 2016

PROJECT TEAM



PROJECT SCHEDULE



An aerial photograph of a city, likely Chicago, showing various buildings, streets, and parks. Overlaid on the image are four callout bubbles, each containing a statistic. The bubbles are colored blue, teal, and green. The text is in a sans-serif font.

PROJECT REVIEW

100+

survey participants

7

meetings with civic
leadership

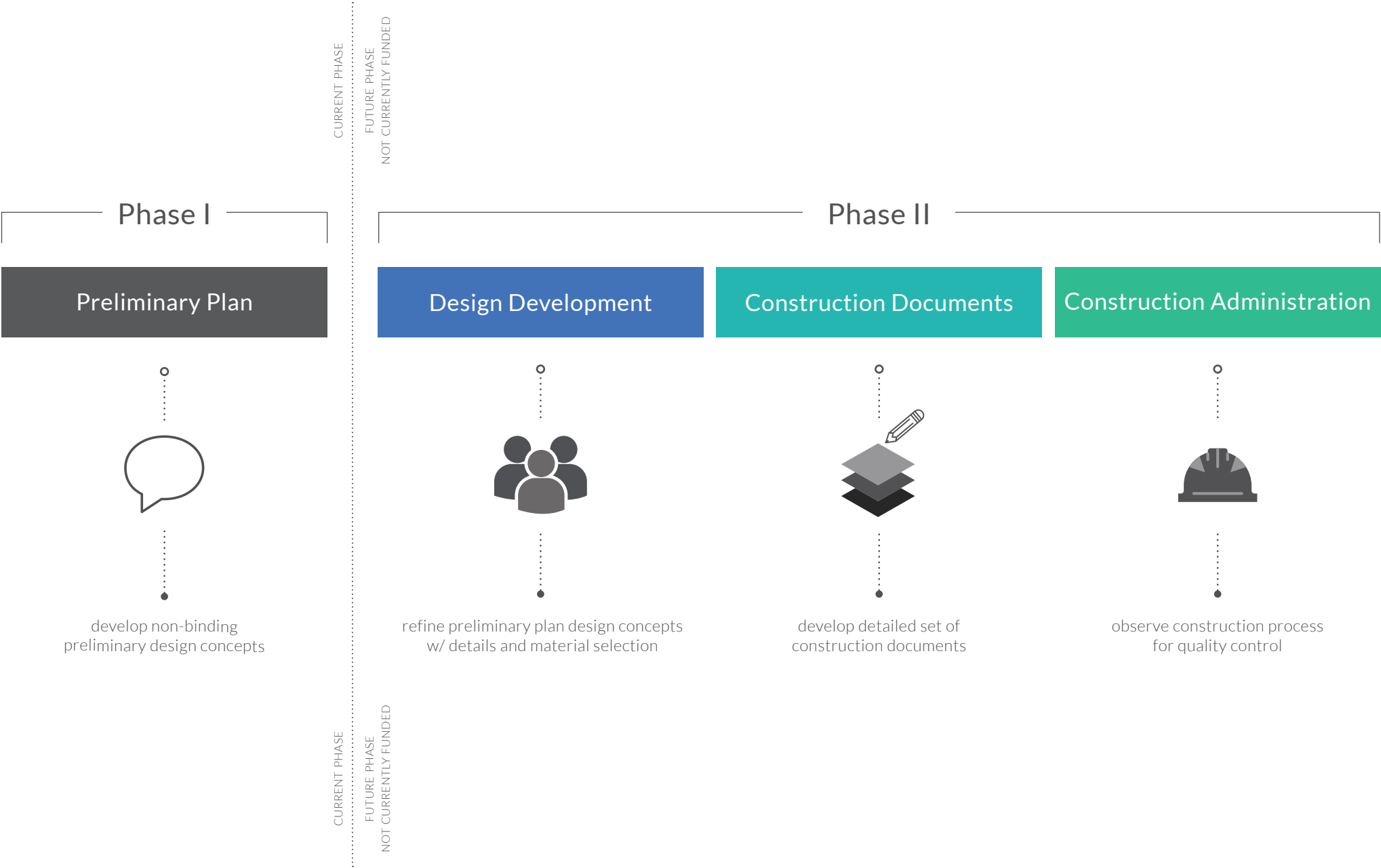
5

public meetings +
stakeholder workshops

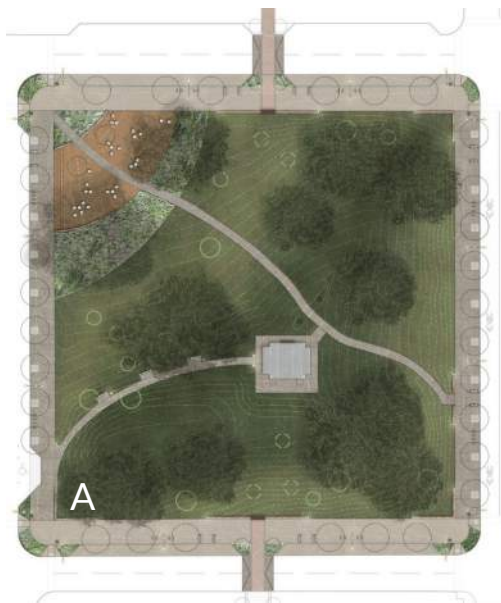
4

online +
print surveys

POTENTIAL NEXT STEPS

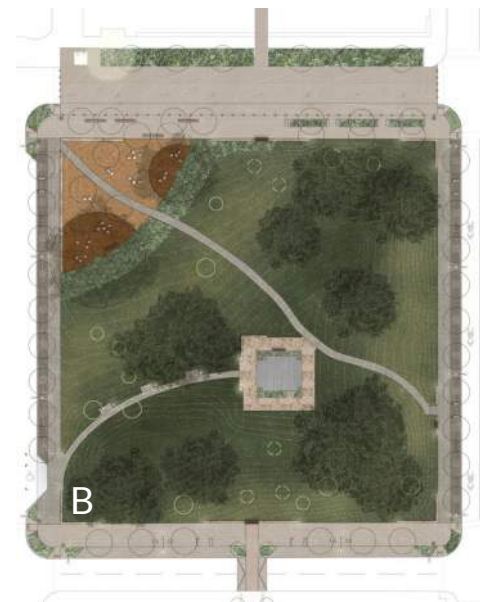


PUBLIC SURVEY RESULTS



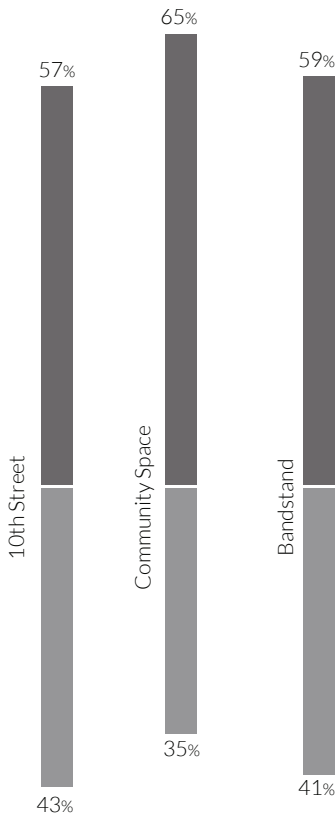
- Top Strengths
- 1. Visual Connection to TC + AHC
 - 2. Simple Design
 - 3. Signage + Lighting
 - 4. ADA Parking/Walk
 - 5. Steps at Community Space

- Top Concerns
- 1. Vertical Elements
 - 2. Wheelchair Lift Location
 - 3. Retaining Walls
 - 4. Planting in ROW
 - 5. Speed Table



- Top Strengths
- 1. 10th St. Sidewalk Layout
 - 2. On-site Restroom
 - 3. Proposed Trees + Silva Cells
 - 4. Preserved Viewsheds
 - 5. Moon Tower

- Top Concerns
- 1. 10th St. Closure
 - 2. Loss of Parking Spaces
 - 3. Width of Walk at Bandstand
 - 4. Material Selection
 - 5. Tree Deck



Wooldridge Square is a common ground, a civic space where Austin comes together as a community.

- Ted Lee Eubanks

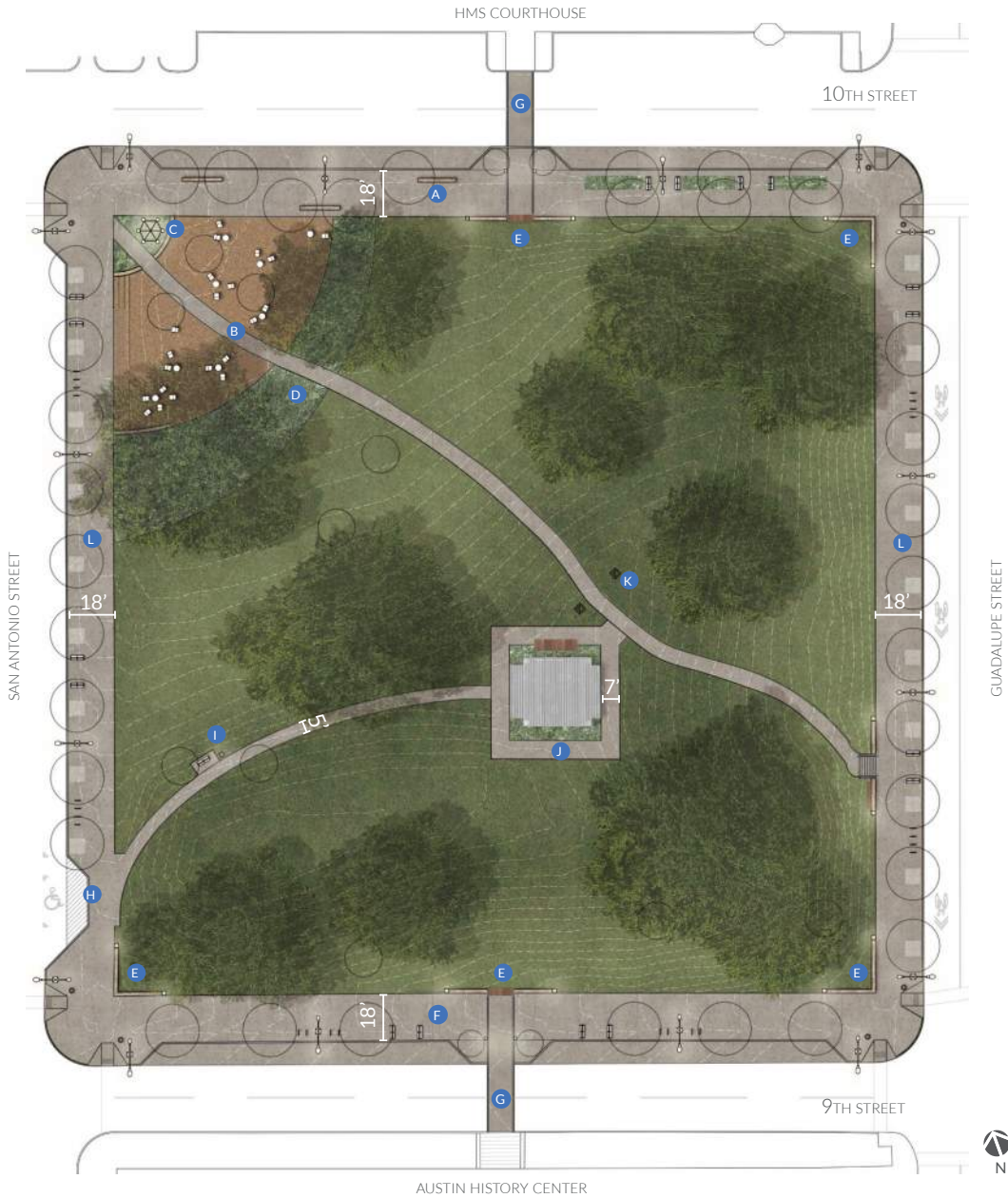
PRELIMINARY PLAN

SYMBOLS

	Street Light		Existing Young Tree
	Bike Rack		Proposed Tree
	Bench		Formal Planting Bed
	Trash Can		Interpretive Signage
	Cafe Table + Chairs		Silva Cell
	Sharrow Lane		

LEGEND

	Civic Promenade		Mid-block Crossing
	Community Space		ADA Walk + Parking Zone
	Relocated Moon Tower		Bench Resting Area
	Planting Band		Perimeter Walk + Wheelchair Lift
	Viewing Platform		Area Drains
	9th Street Promenade		Perimeter Streetscape





THANK YOU