

# Proposed Acquisition of AISD Property at Doris Dr at Hathaway Dr

Approximate size of site: 1.23 acres

 Property of Interest

2015 Aerial Imagery, City of Austin

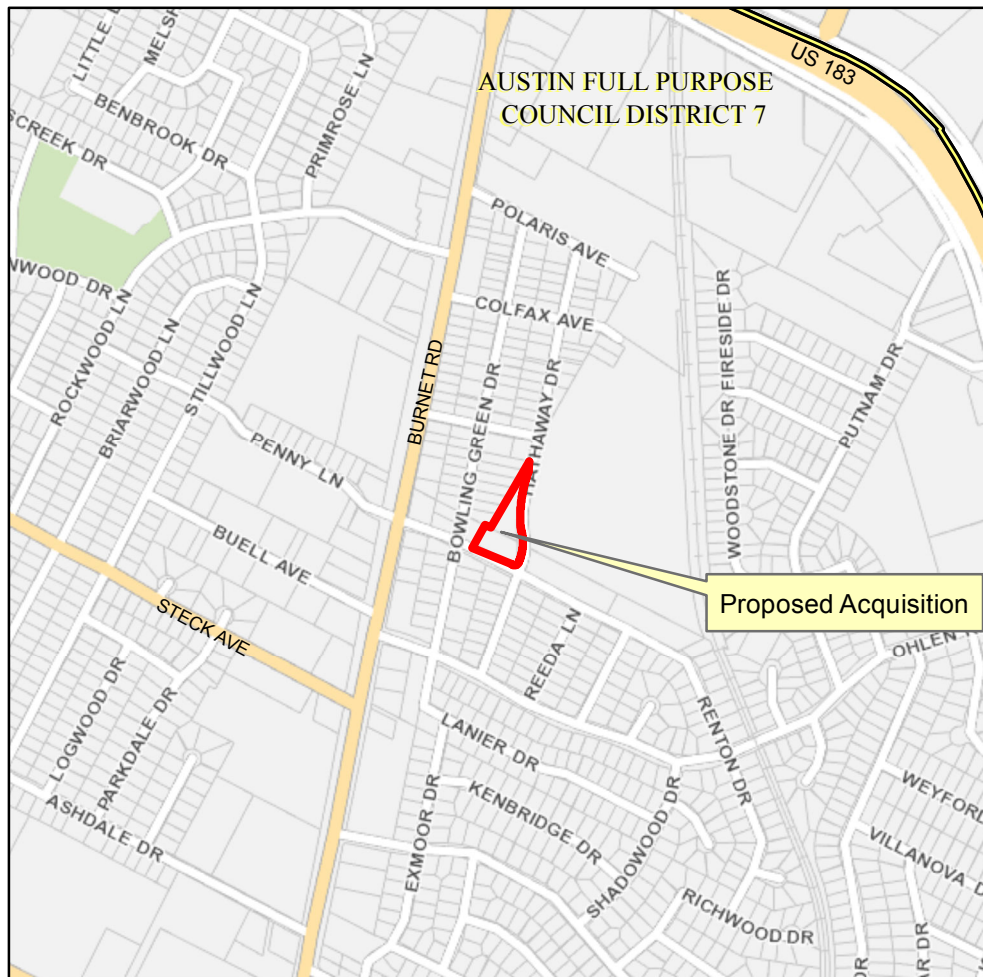
*City of Austin*  
*Real Estate Services*



This product is for informational purposes and may not have been prepared for or be suitable for legal, engineering, or surveying purposes. It does not represent an on-the-ground survey and represents only the approximate relative location of property boundaries.

This product has been produced by the Office of Real Estate Services for the sole purpose of geographic reference. No warranty is made by the City of Austin regarding specific accuracy or completeness.

Produced by CBoas, 12/1/2016



0 500 1,000  
Feet



0 50 100  
Feet