

Shipe Pool Improvements

Design Commission Presentation

December 19th, 2016



DESIGNWORKSHOP

Project Team



Stakeholder Outreach Quick Facts

Total from workshops and online participation



168+
Comments



9
Neighborhoods



151+
Participants

Background



Shipe Pool, originally built in 1934, is currently classified as a 'critical pool' per the Austin Aquatic Facilities Needs Assessment.



\$3.1 million total budget - funded through a onetime allocation from City of Austin City Council to the Parks and Recreation Aquatic Division.



Scope of project includes pool and associated facilities.



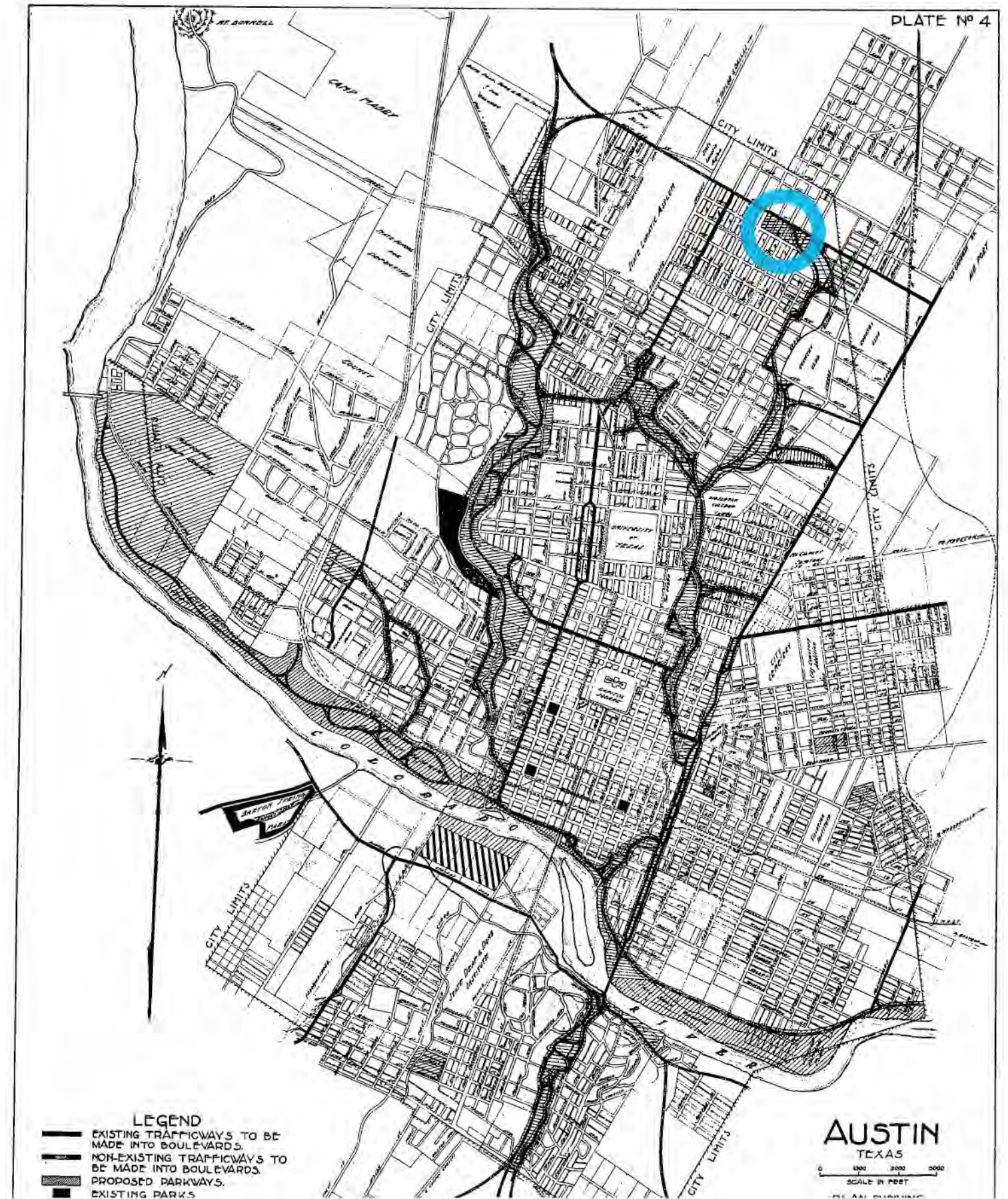
History

A City Plan for Austin Texas - 1928

Parks and Boulevards

This Neighborhood Park

- Park near 43rd Street
- Natural timber growth
- Elizabet Ney Studio
- Northern reach of "Waller Creek Driveway"



History

Parks and Public Playground Commission

1928, Recommendation

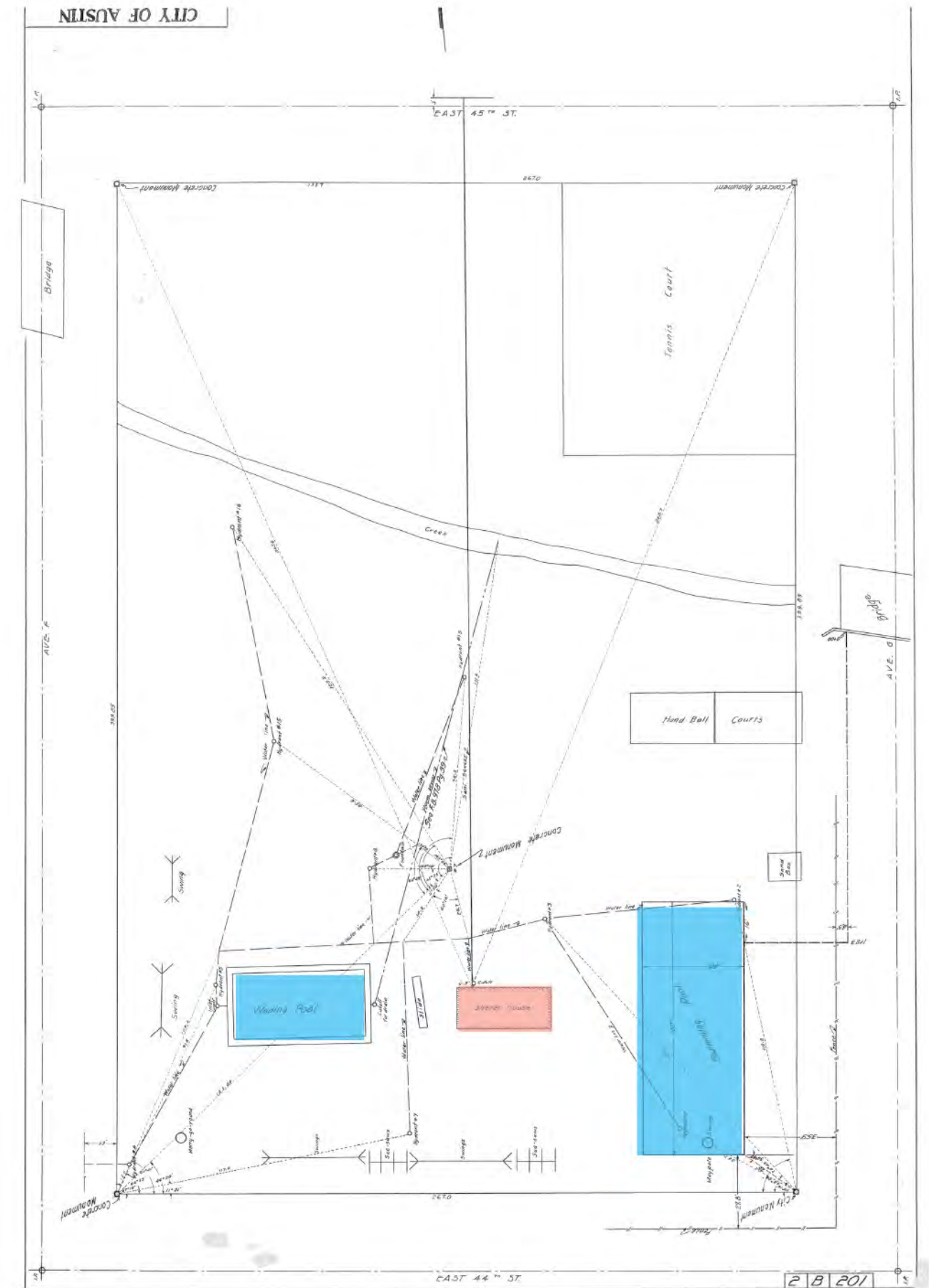
- Block 3, Hyde Park Addition, recommended to the City Council as a park site
- Initially called North Austin Park, later Hyde Park Playground

1929, Land Purchased

- Land purchased for \$6,500
- Sod and water lines installed

1930, Implementation

- Budget of \$3,000 approved for Hyde Park Playground Shelter House and fencing



History

Shelter House - 1930

Design attributed to [Hugo F. Kuehne](#)

Kuehne designed similar play shelter houses for several other parks in Austin, including West Austin Park and Little Stacy Park



History

Wading Pool - 1933

Piping as originally installed was apparently too small to carry sufficient water for both the wading pool and the watering of the grass.

Sanitary sewer costs exceeded original budget projections for this and other parks.



History

Swimming Pool - 1934

Civil Works Administration (CWA) labor was used to build the pool.

The City of Austin contributed \$1,500 for the materials and equipment used to build the pool.

The pool opened to the public on 5/15/1934.

In a joint meeting of the City Council and the Recreation Board, [the park was officially named Shipe Park in 1934.](#)



Historic Designations

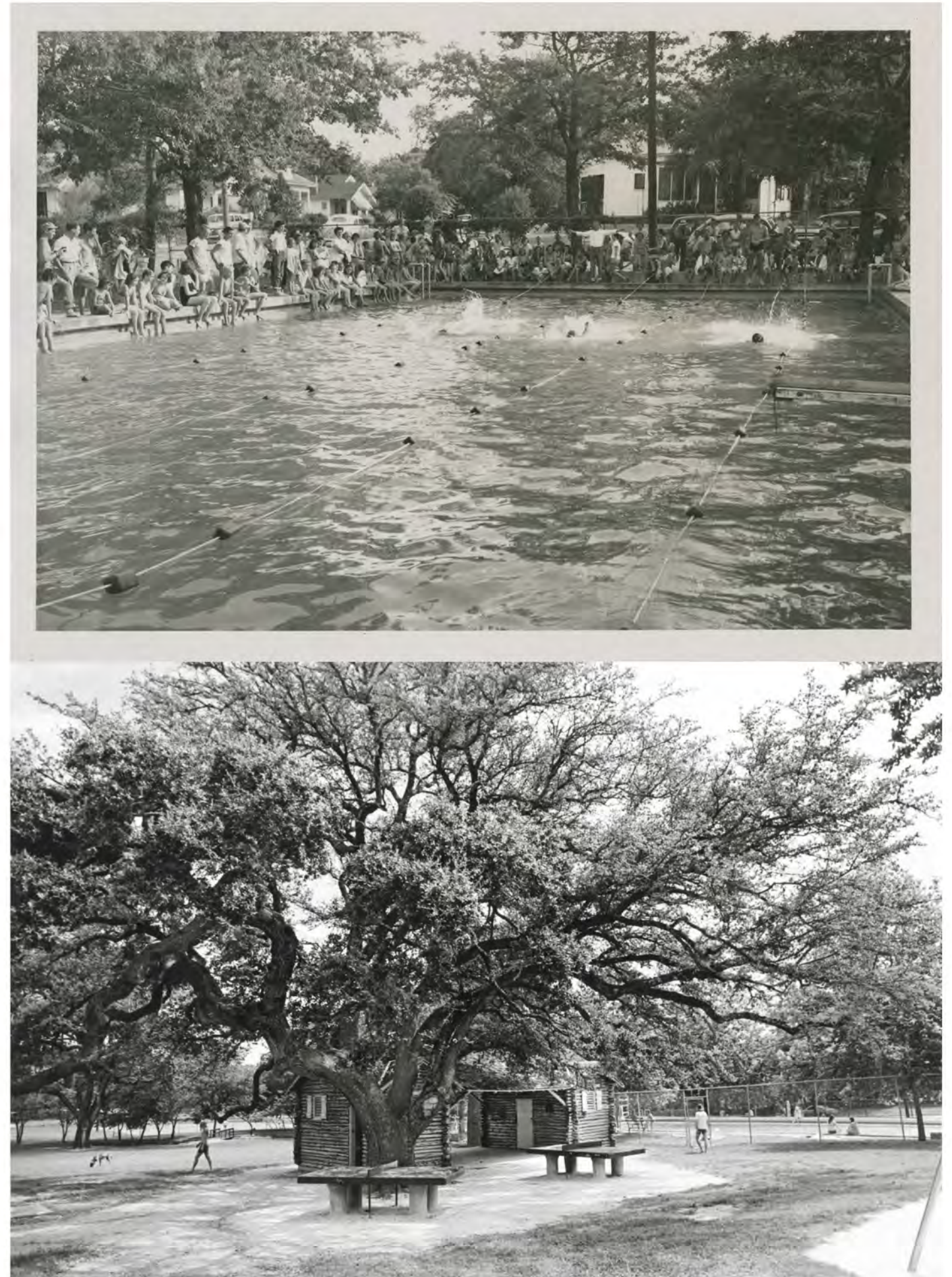
National Register - 1990

Shipe Park, which encompasses an entire block, comprises the largest open space in the District and is classified as a contributing landscape feature. Dedicated in 1928, the park contains two pools and a log clubhouse that predate 1941, as well as playground facilities and a tennis court that post-date the period of significance.

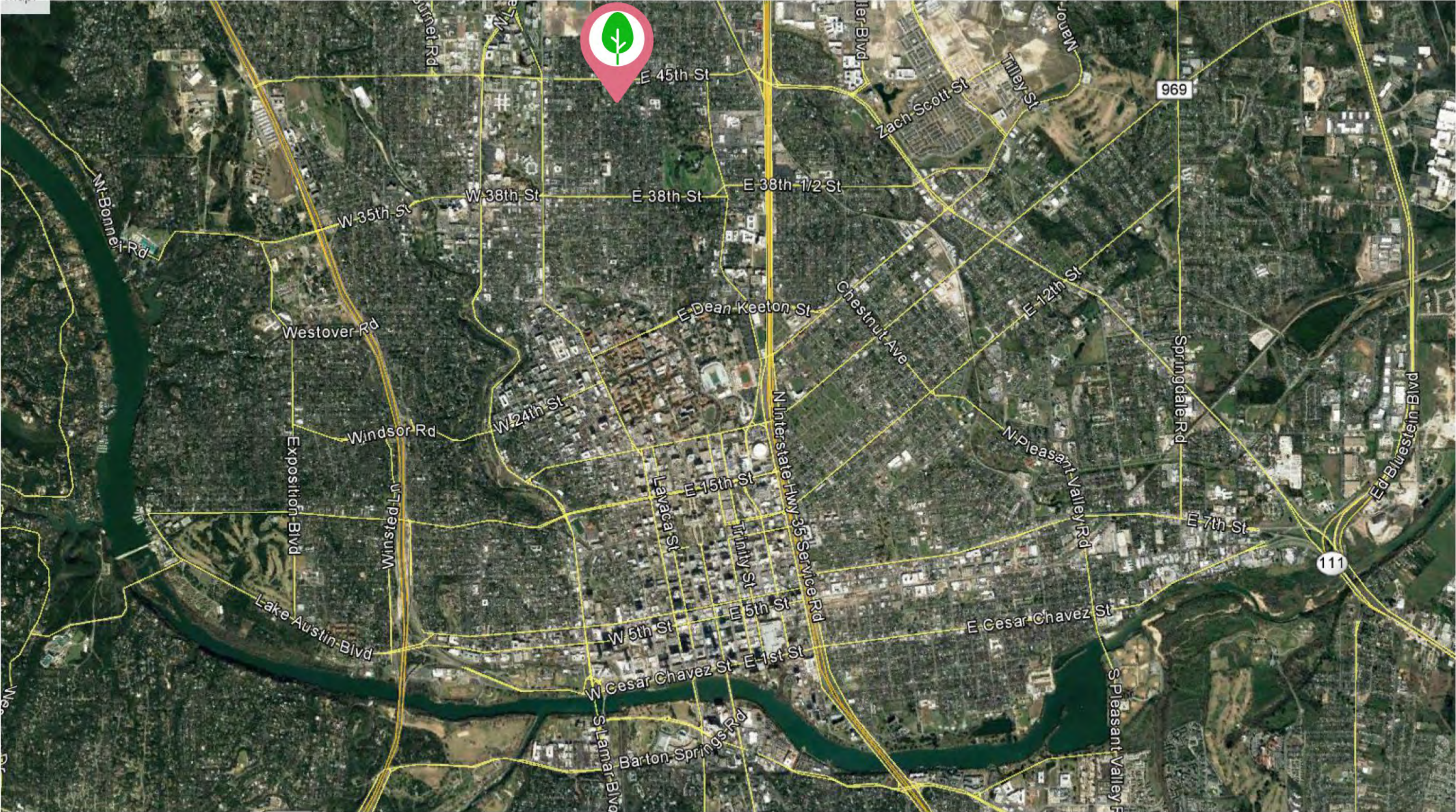
Local Historic District - 2010

8. Public Space Standards

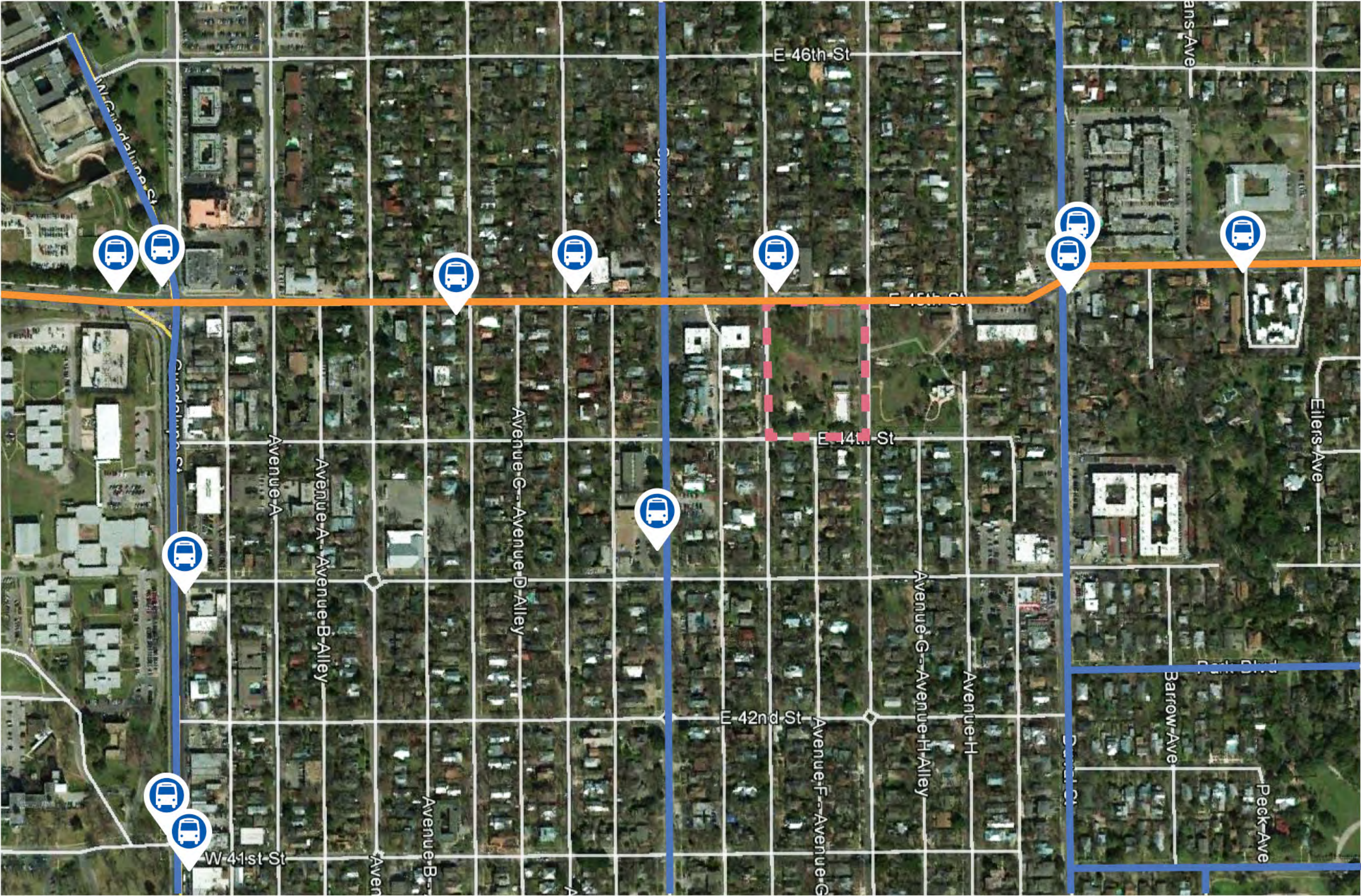
Hyde Park public space consists of streets, sidewalks, bridges, park space, public buildings, and alleys. School buildings are a significant historical feature of Hyde Park. Preserve and maintain the width, materials, and historic location of contributing civic structures, including sidewalks, retaining walls, and bridges. Maintain the historic facades of public buildings and park structures in compliance with the Secretary of the Interior's Standards.



Site Location in Austin



Site Location & Transportation in Hyde Park



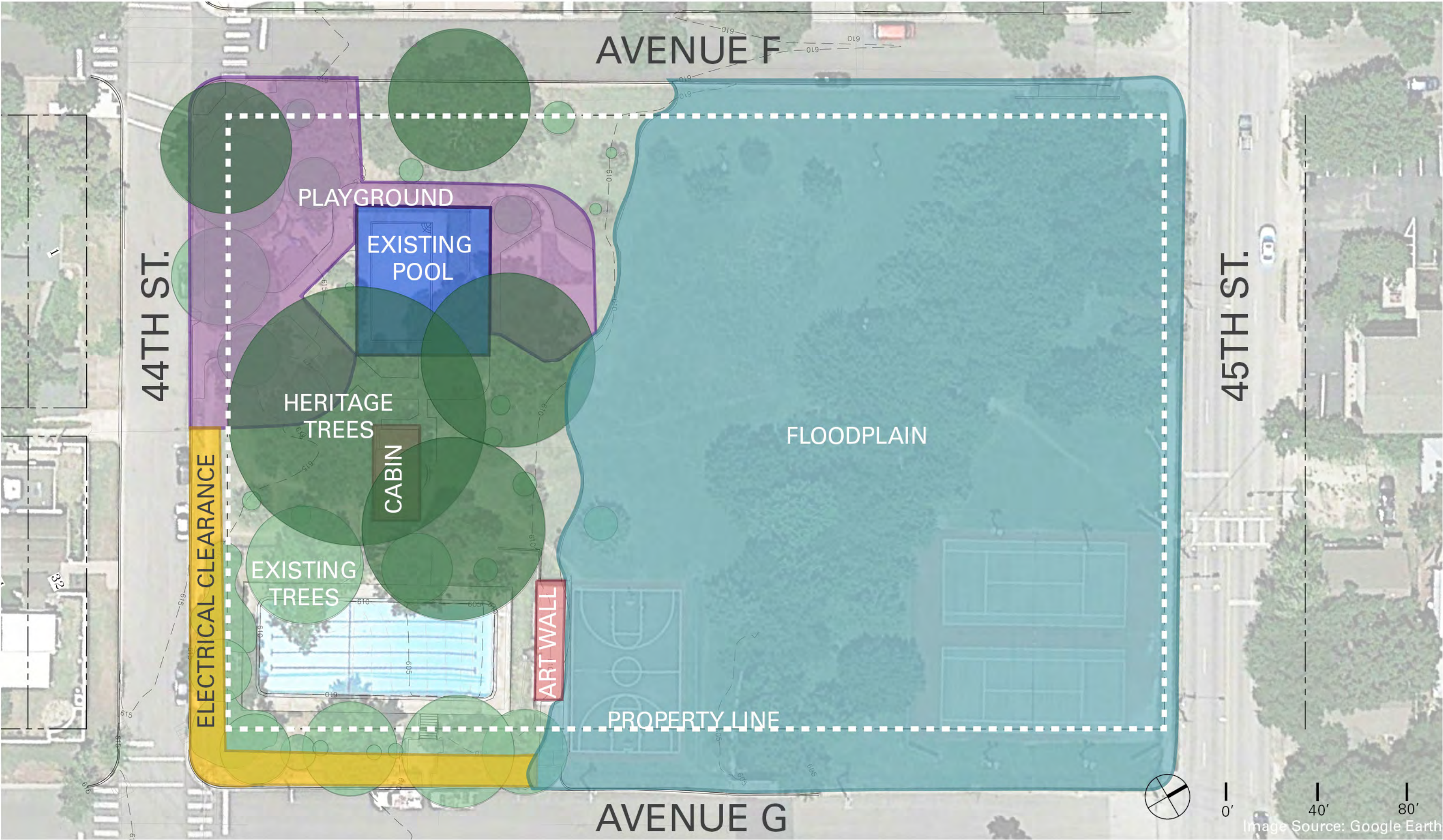
Transportation Survey Results

Bus:	.7%
Ride Share:	0%
Carpool:	0%
Drive:	23.5%
Walk:	59.4%
Bike:	15.7%
Other:	.7%

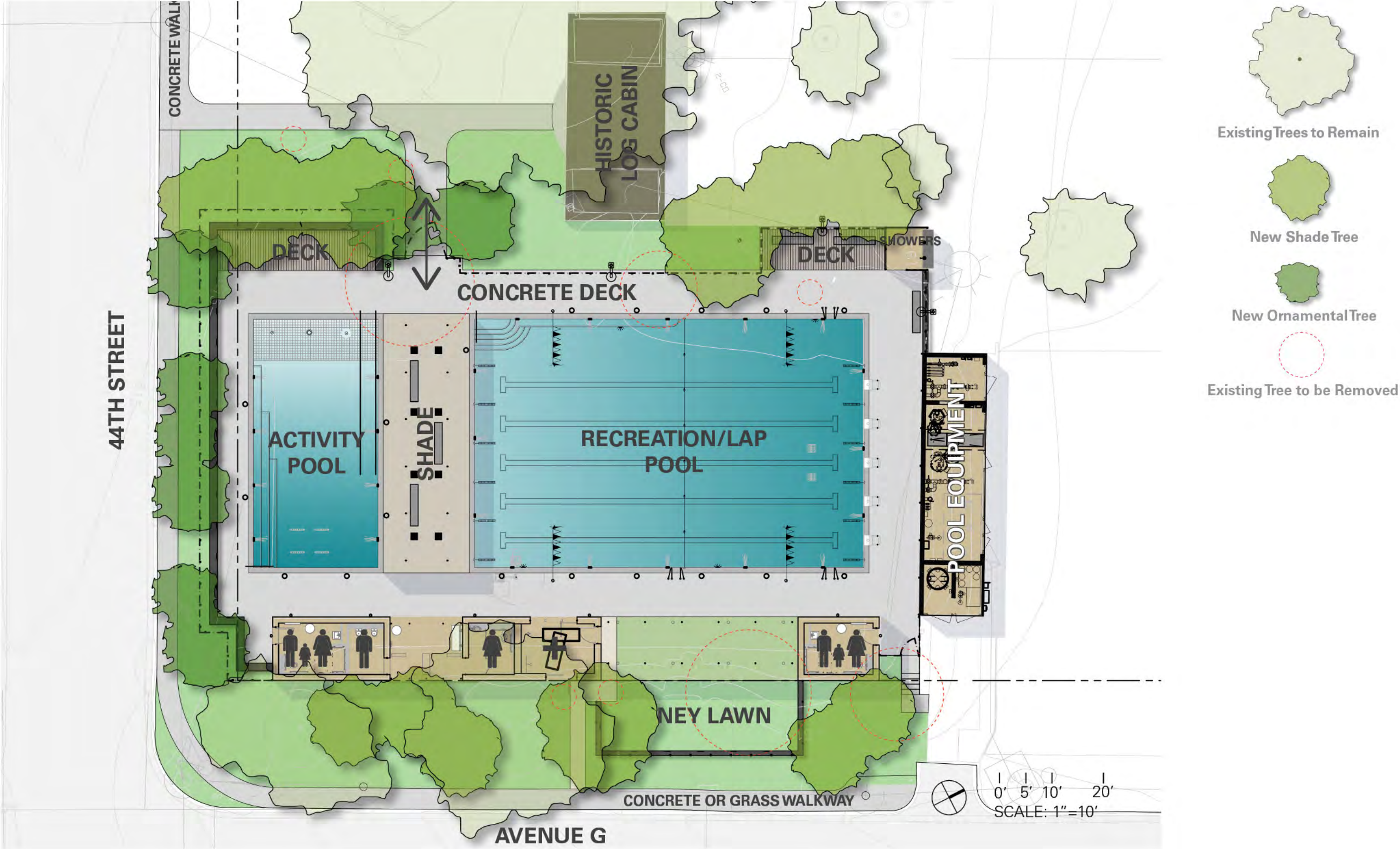
Total Participants: 140

- Site Boundary
- Bike Riding Conditions
 - Low-Comfort Road
 - Medium-Comfort Road

Site Constraints

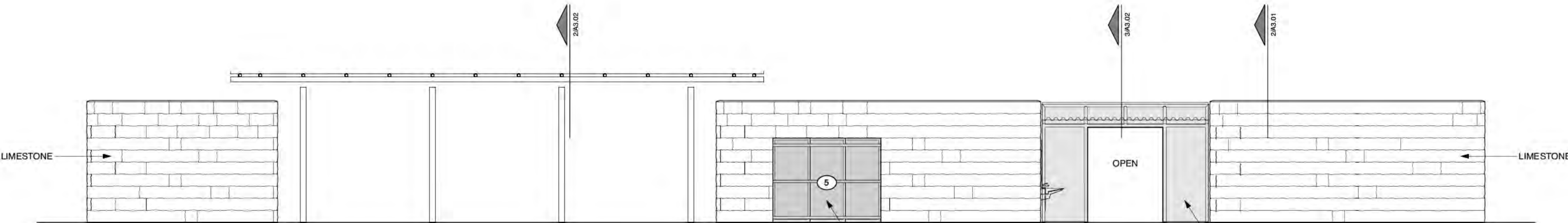


Design Development Plan





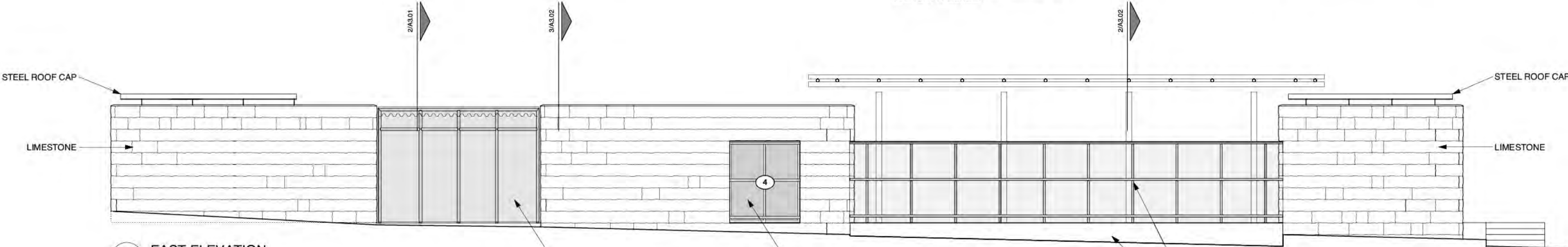
Architecture



5 WEST ELEVATION
3/16" = 1'-0"

PERFORATED CORRUGATED METAL PANELS
ON STEEL FRAME. INSTALL IN FRONT OF
DOOR TO ALLOW VENTILATION, BUT TO
PREVENT PASSAGE.

PERFORATED CORRUGATED METAL PANELS
ON STEEL FRAME.



6 EAST ELEVATION
3/16" = 1'-0"

PERFORATED CORRUGATED METAL PANELS
ON STEEL FRAME.

PERFORATED CORRUGATED METAL PANELS
ON STEEL FRAME. INSTALL IN FRONT OF
DOOR TO ALLOW VENTILATION, BUT TO
PREVENT PASSAGE.

FENCE

RETAINING WALL -
RUSTED STEEL











Subchapter E

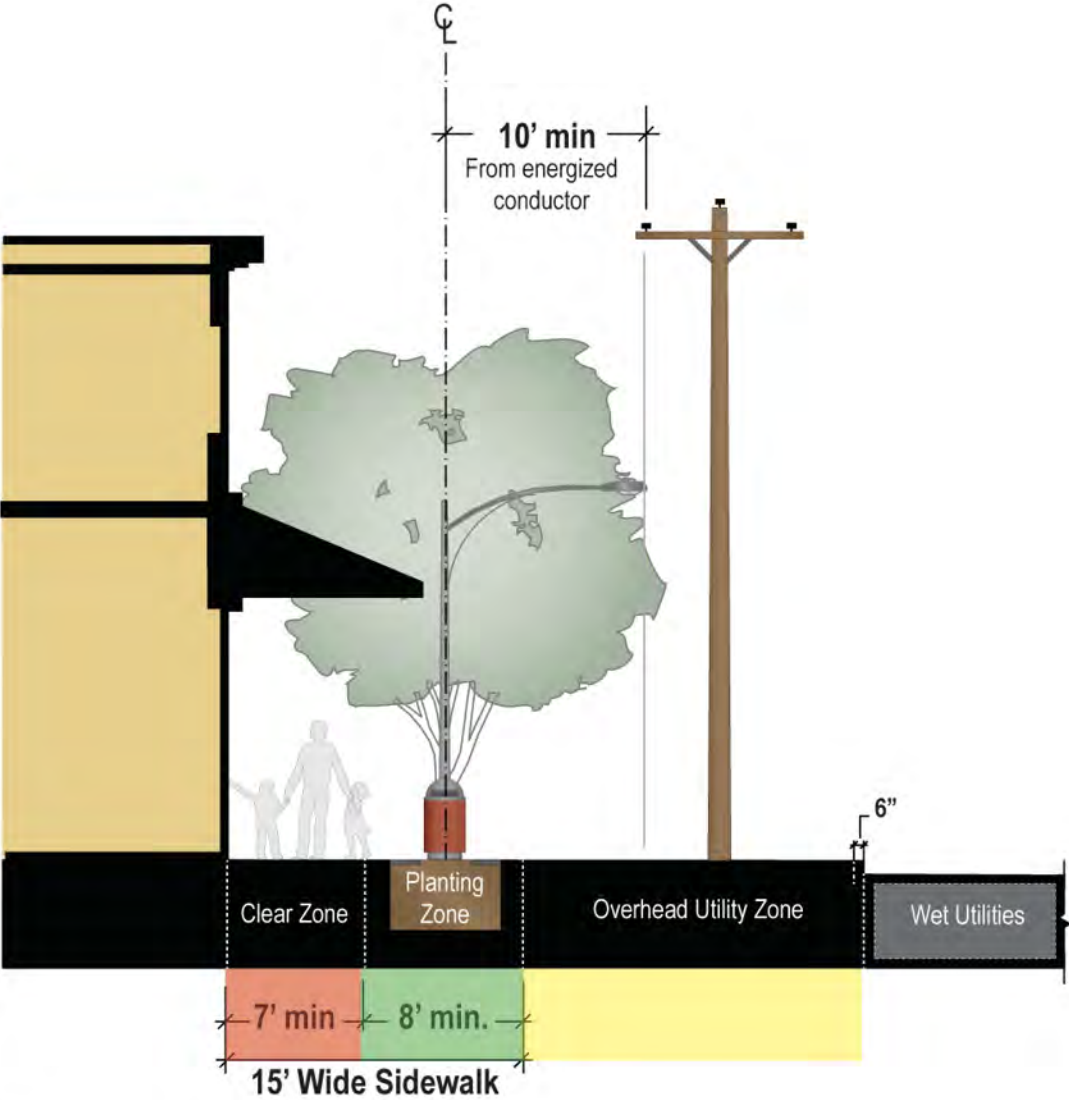
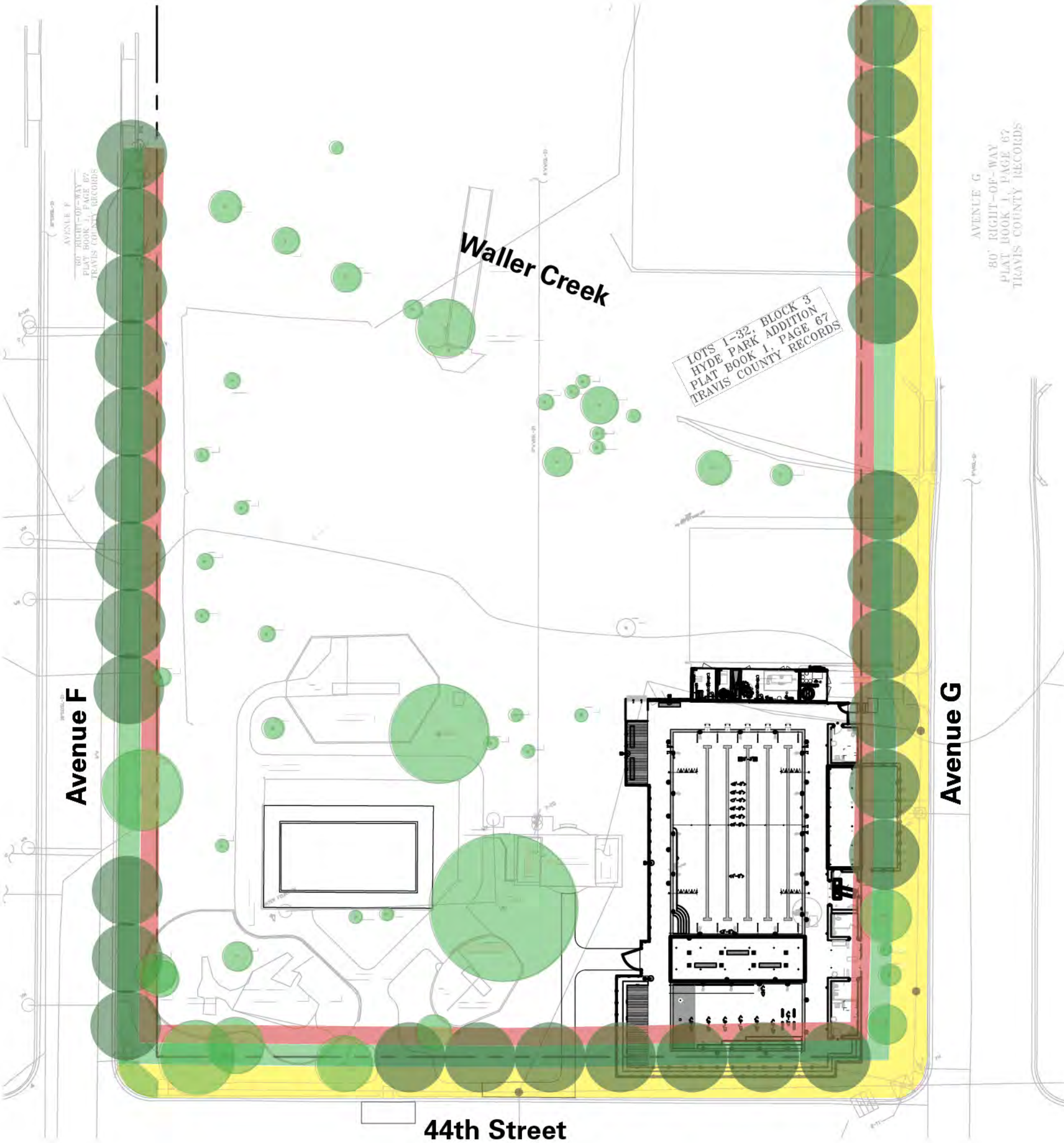
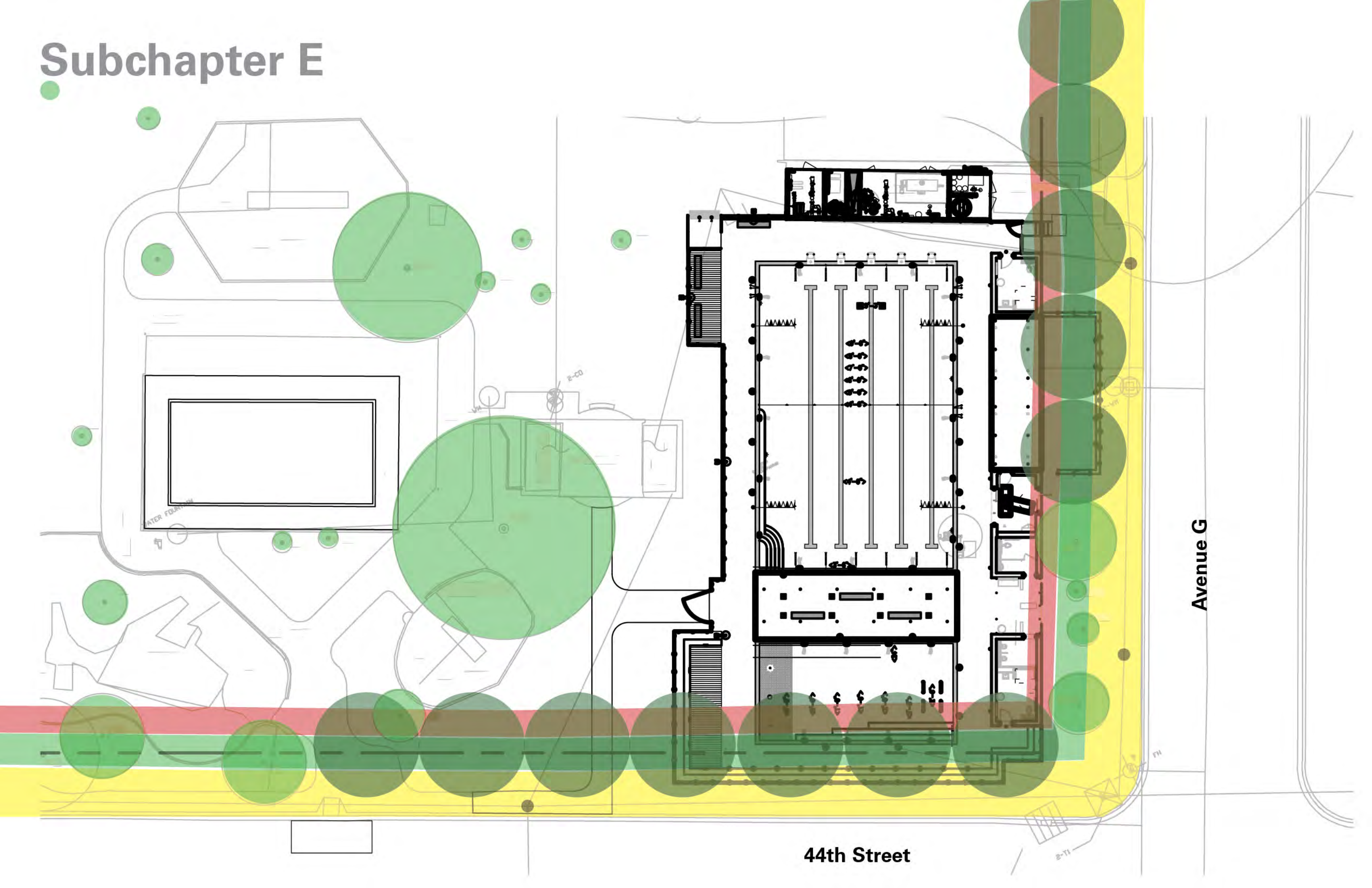


Figure 9:
Core transit corridor with overhead utility zone at curb.



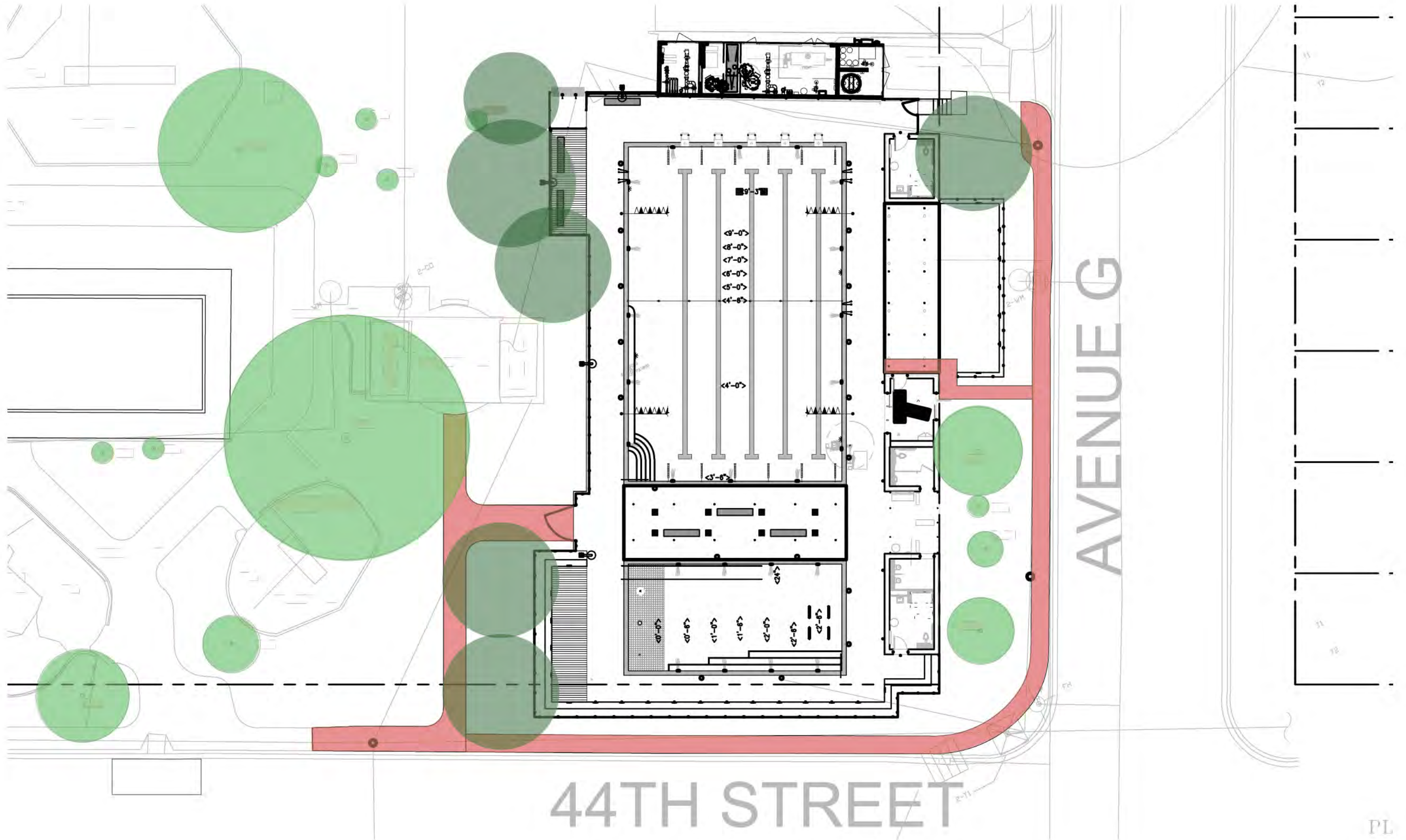
Subchapter E



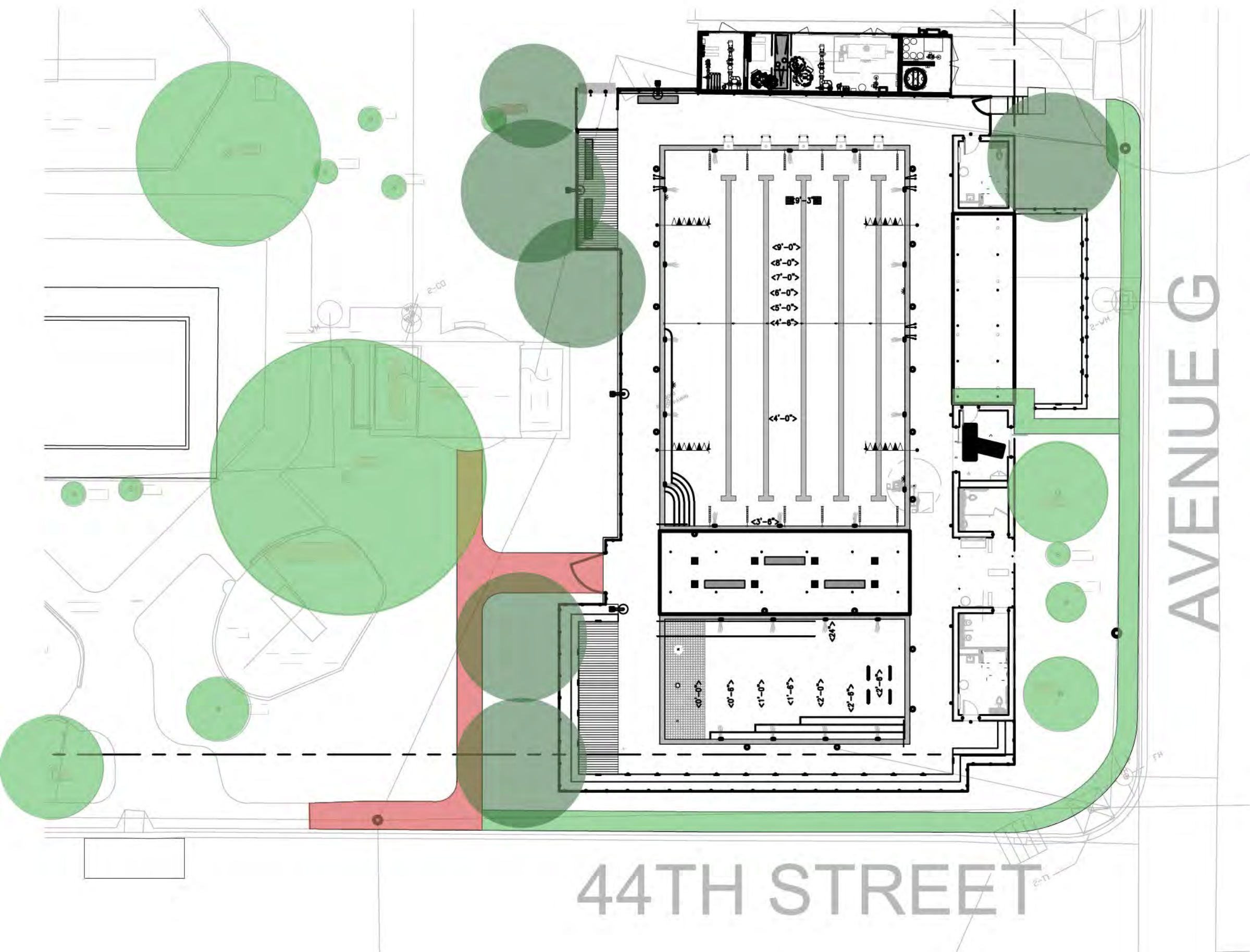
Existing Sidewalk Pattern



Proposed Sidewalk Pattern - Concrete



Proposed Sidewalk Pattern - Structural Grass



Design Development Plan

