

Equity in Connectivity Hike and Bike

For Urban Transportation Commission

By People of East Austin – East of Airport
April 11, 2017

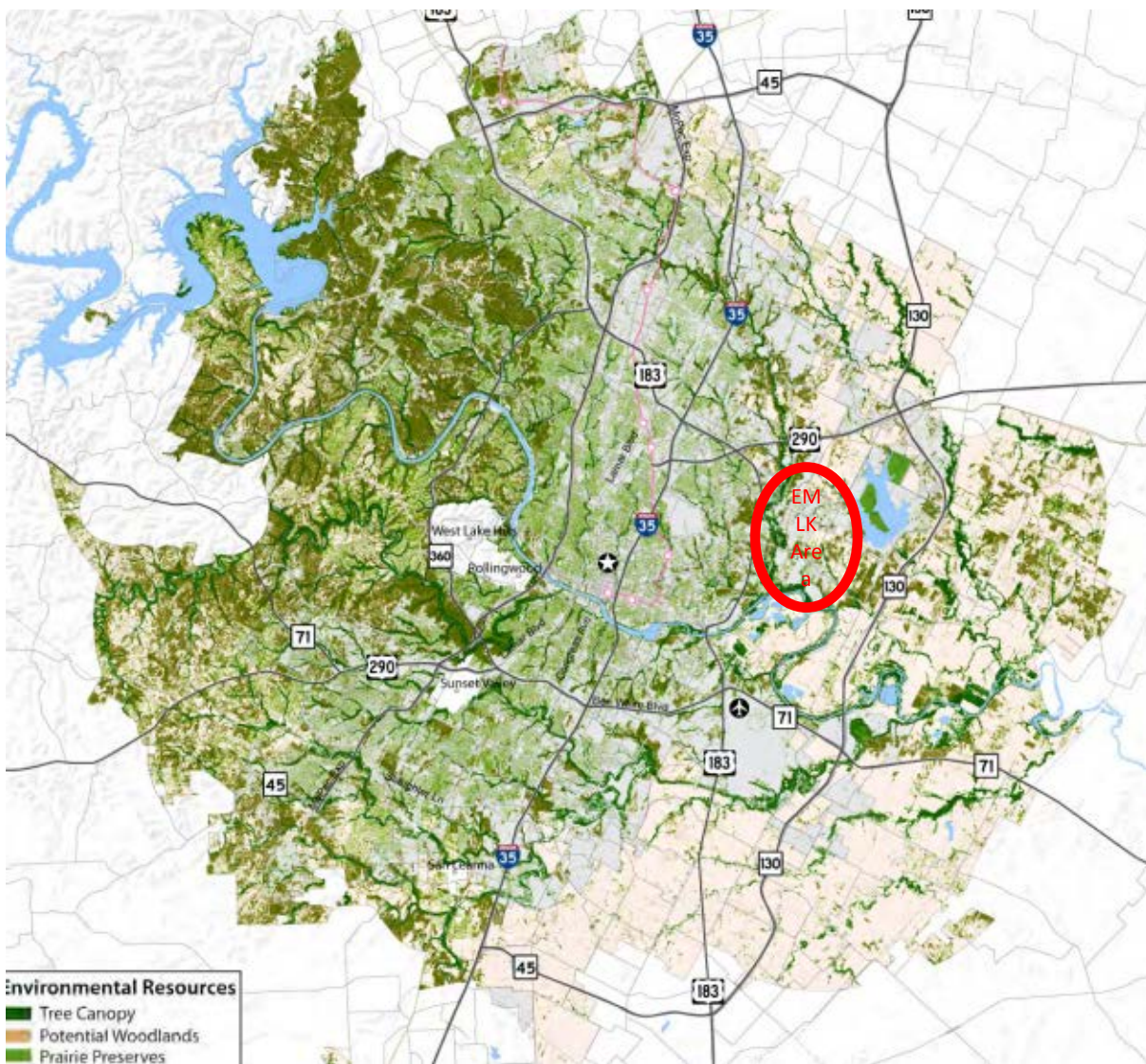
Agenda

- Goals, Assumptions, Objective
- Current Status, Deficiencies and Opportunities
- Solution
- Organizations included in planning and scope
- Solutions in Works – Eastlink/ Think-East
- Little Walnut Creek Park
- Morris Williams Golf Course
- Red-Bluff Nature Reserve

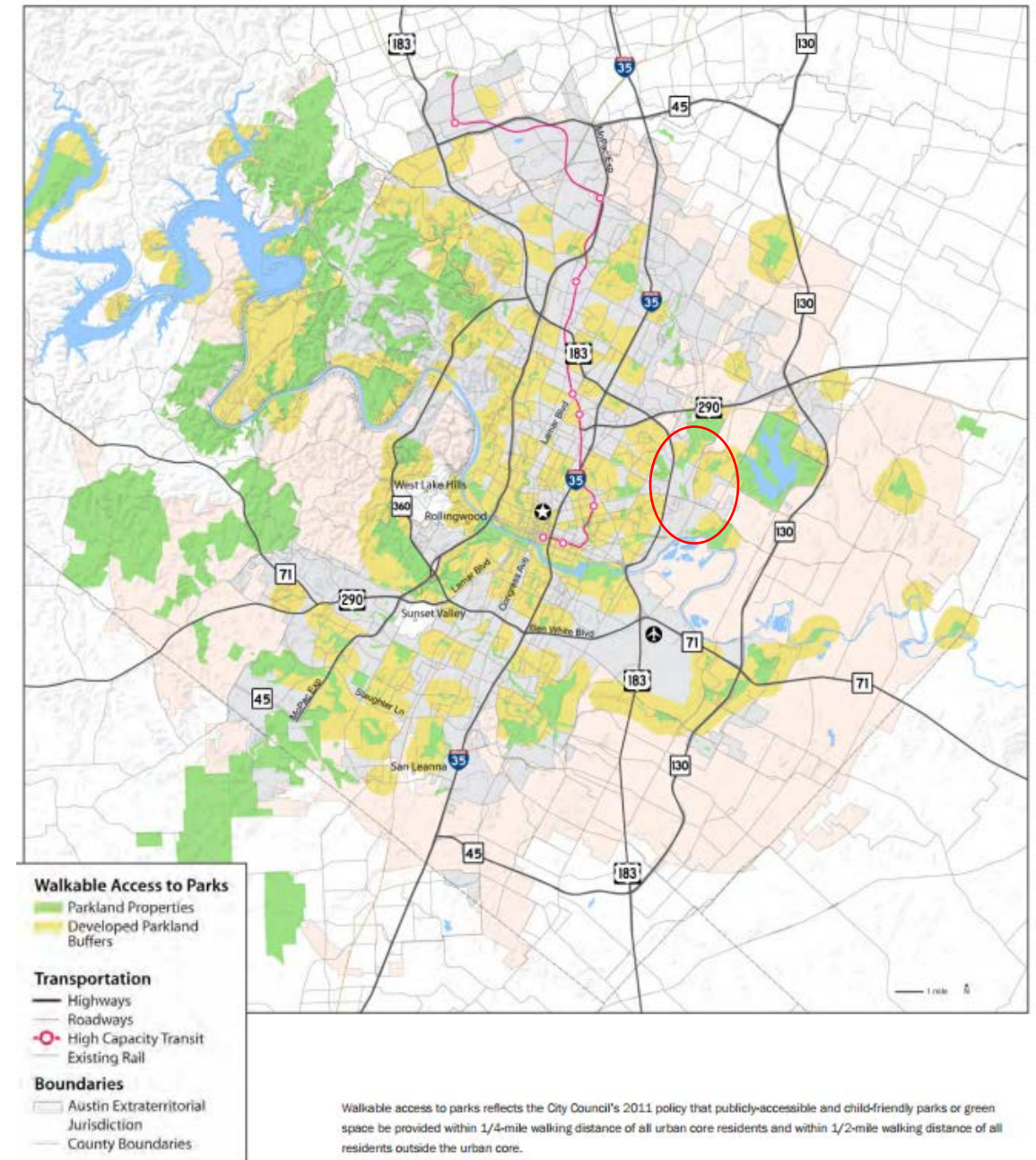
Goals, Assumptions, Objective

- Goal: Enablement not Entitlement
- Assumptions: Transportation models influence economic models which in turn affect all other models in modern society*
- Objective: Develop an “alternate” urban transportation model in EMLK area which facilitates cycling, walking and alternate** methods of transportation
- Case for Consideration: For somebody who does not have an automobile, an alternate method of transportation or mass-transport is not a choice but a “right”.

Figure 4.11 Walkable Access to Parks



As compared to West Austin East Side looks pretty bare – all neighborhoods should be within 1/4 mile walking distance of a park in the urban core



Walkable access to parks reflects the City Council's 2011 policy that publicly-accessible and child-friendly parks or green space be provided within 1/4-mile walking distance of all urban core residents and within 1/2-mile walking distance of all residents outside the urban core.

Current Mass Transit Status

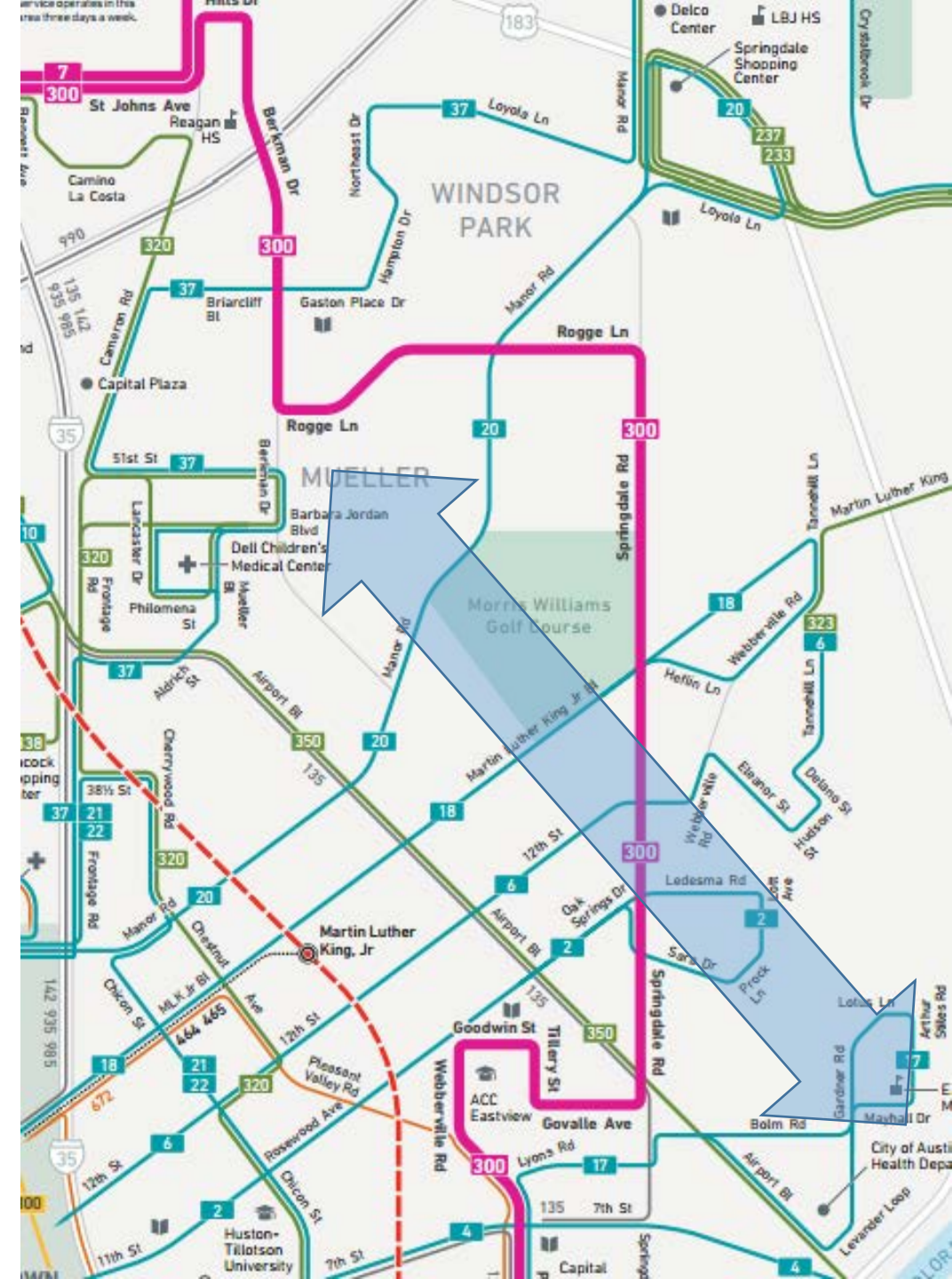
- Cap Metro Routes are East-West

Deficiencies

- There is not much way to move from North to South

Opportunities

- Creates an opportunity of North South Transit using alternate modes.
- Creates Opportunity for Companies like “Austin B cycle” to create a centers in “Mueller” and “Think East” and Connect them.



Organizations included in planning and scope

Organizations

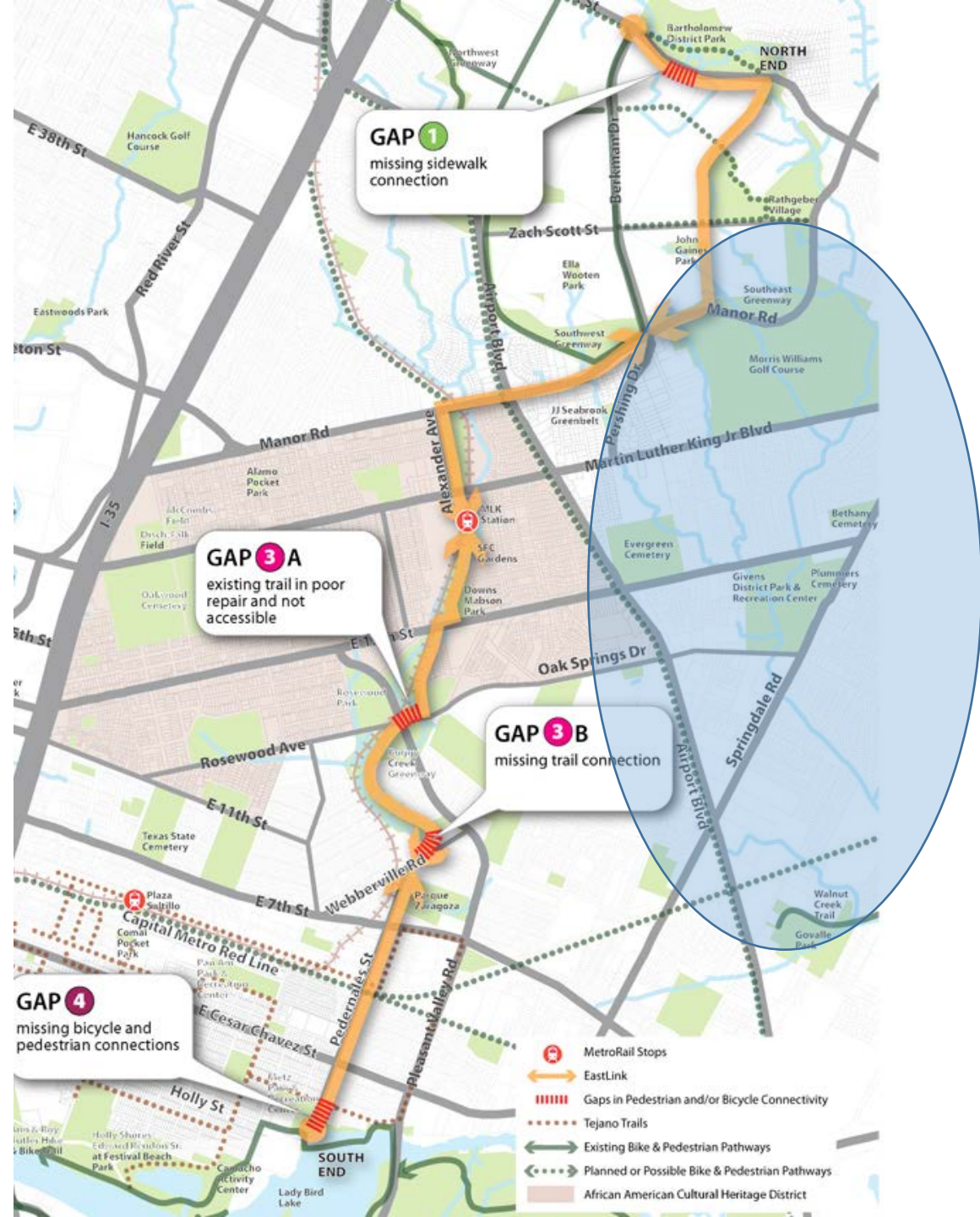
- EMLK Planning Contact Team
- Bike Austin
- Bike Texas
- District 1,3,9 CM offices
- PSSNA
- SANA
- EMLKNA
- Hogpen NA
- PARD

Scope of Planning

- Connects 4 schools
- Connects 4 green spaces
- Connects to Mueller
- Connects to 3 swimming pool
- Connects to Southern walnut Creek Trail to entire EMLK area.

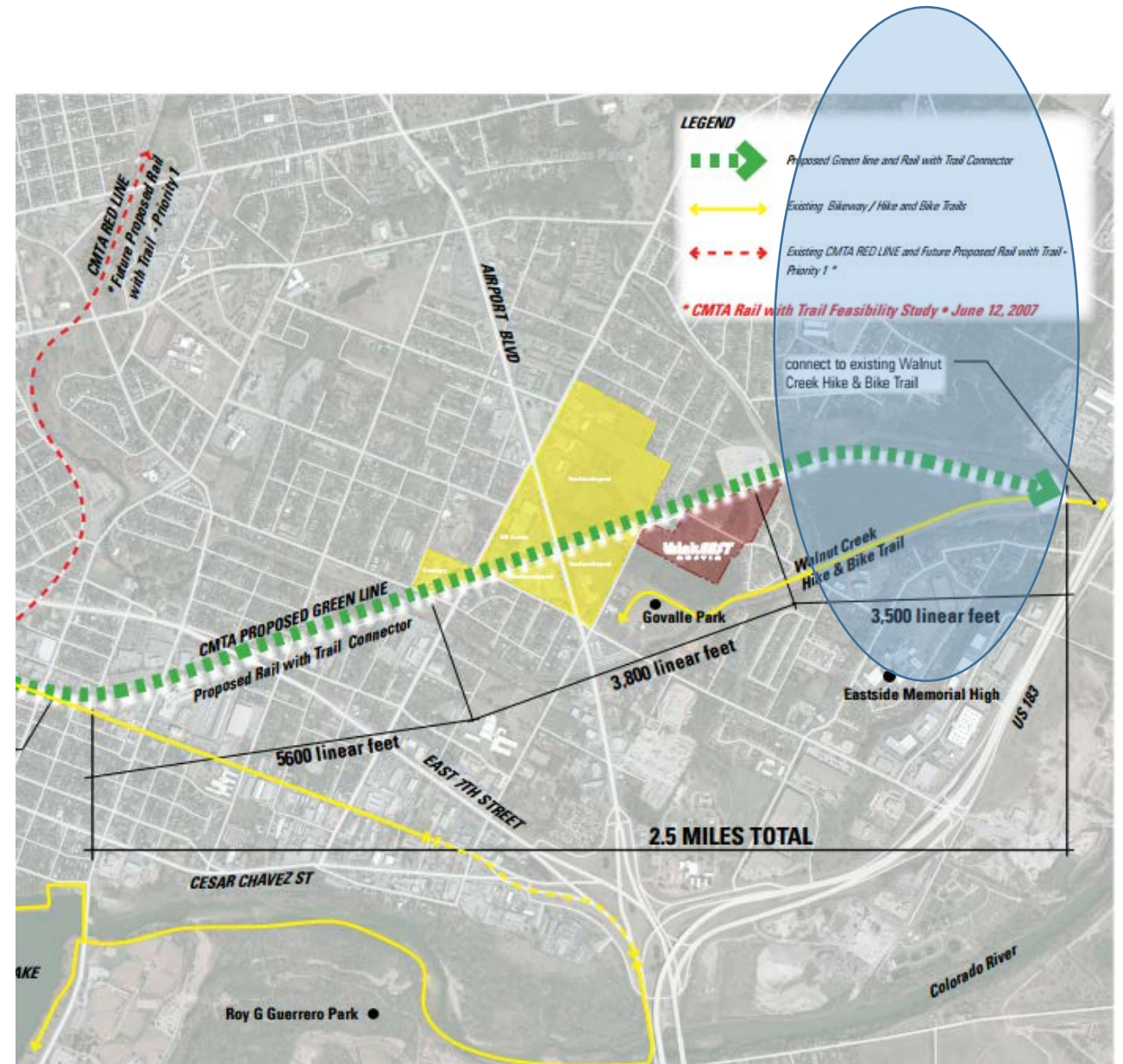
Solutions in Works - Eastlink

1. Eastlink Plan already exists
2. We are complementing the “Eastlink” plan with EMLK bicycle route (shaded area)
3. We want to connect to business centers “Mueller” in the North and “Think East” in the South
4. We want to connect to “Little Walnut Creek Park” in the North and “Red Bluff” in the South
5. This area connects 3 districts (1, 3, 9)



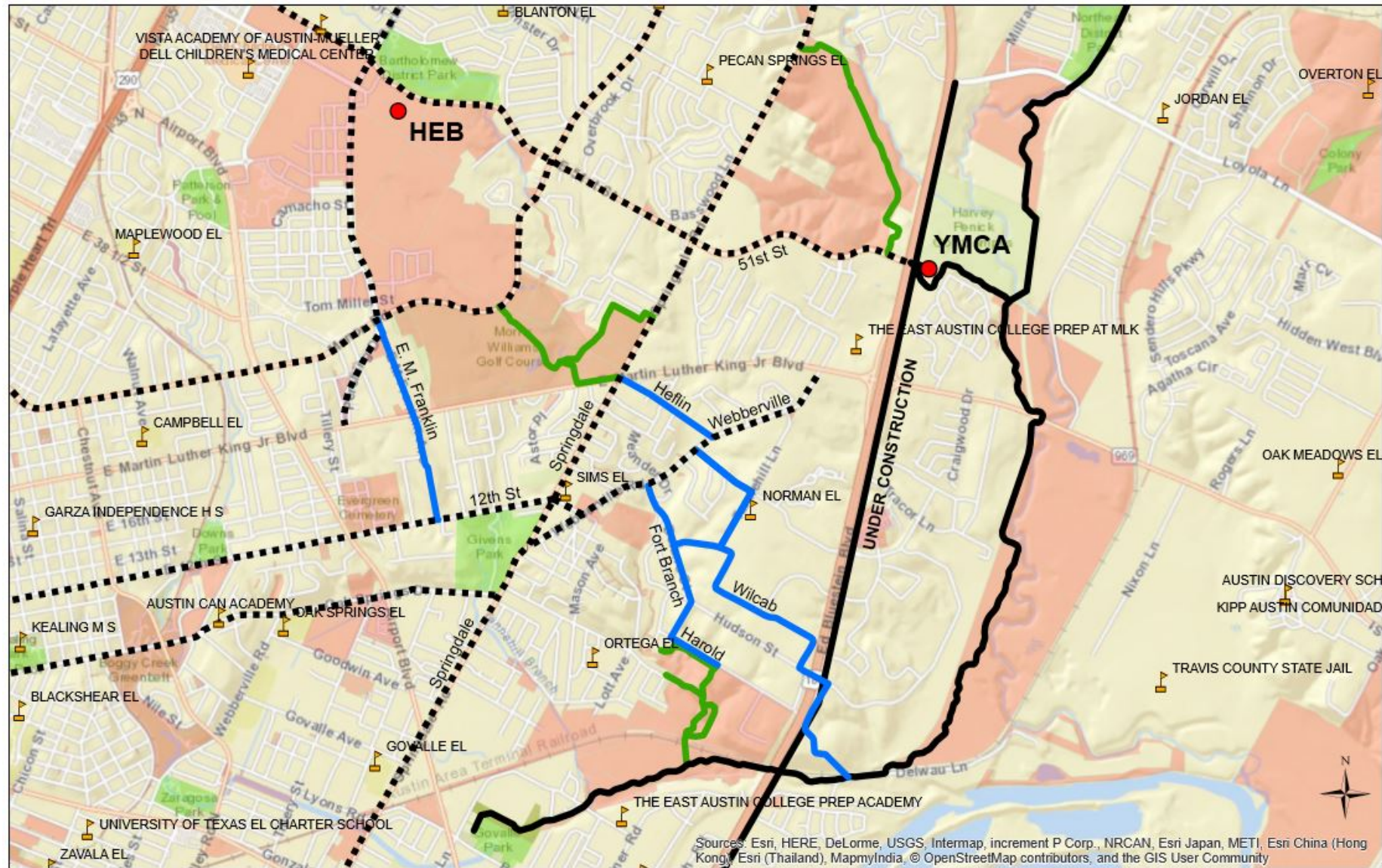
Solutions in Works – Think-East

1. Think East Plan already exists
2. We are complementing the “Think-East” plan with EMLK bicycle route (shaded area)
3. We want to connect to business centers “Mueller” in the North and “Think East” in the South
4. We want to connect to “Little Walnut Creek Park” in the North and “Red Bluff” in the South
5. This area connects 3 districts (1, 3, 9)



Goal: Build Equity through a set of routes North to South for walking and bicycles.

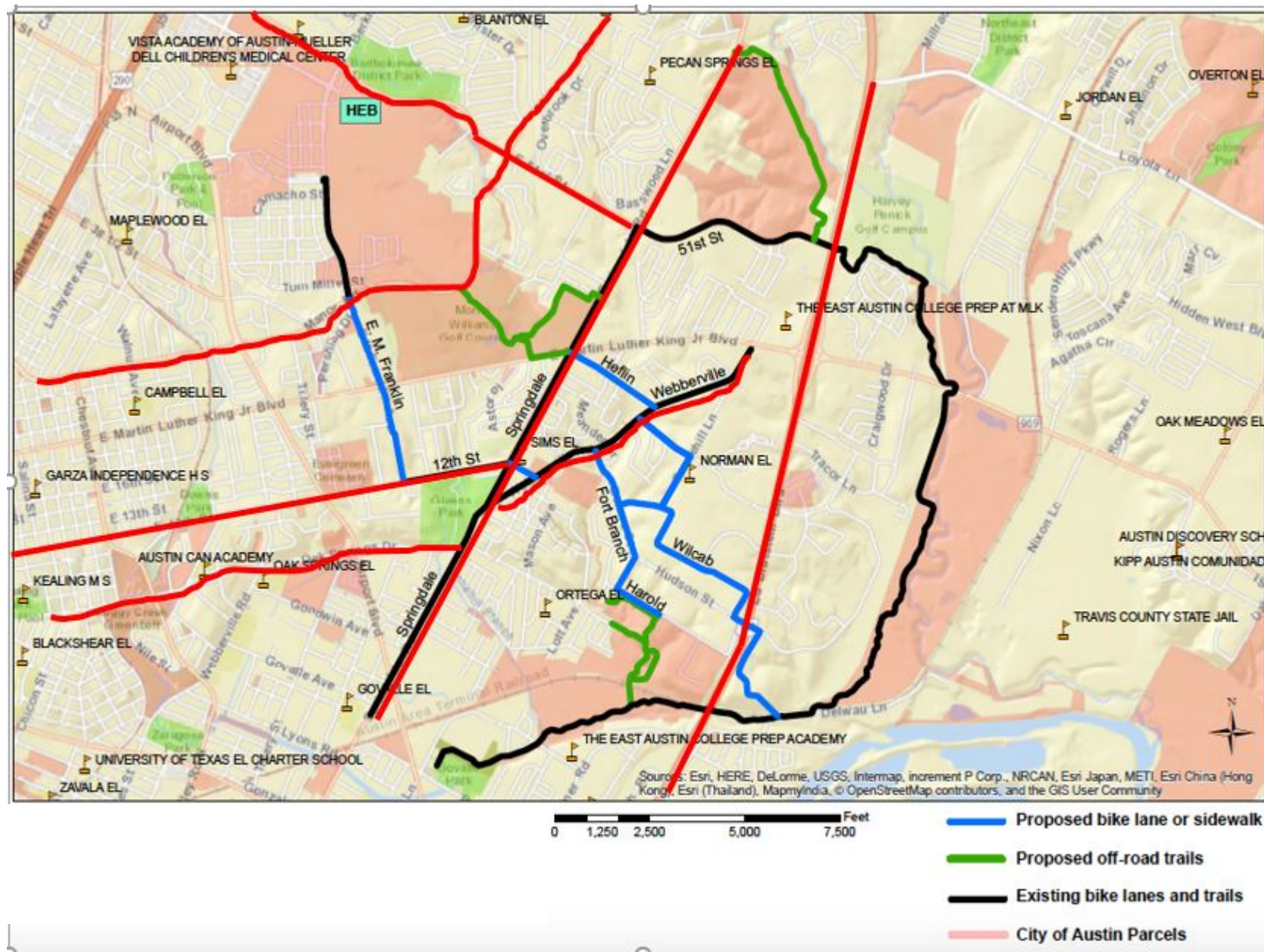
1. Hike and bike trail in the map attached (not just do part of it but complete)
2. Little walnut-creek park (in our plan since 2002)
3. Red-bluff nature reserve
4. Schools that are in the trail for connectivity purposes
5. Creation of “equity” through connectivity



East MLK Neighborhoods
Connectivity Trails

Thanks Charlie Duncan/
Lynn Haas

Superimposing bicycle master plan on EMLK plan



Proposed Little Walnut Creek District Park Trail (Phase I)

**Huge District Park
that few know exists.
Big opportunity for
our community!**

Value Proposition

- It's a 200 acres treasure for the entire east side
- The trail connects a large section of east side to YMCA
- Connects to Southern Walnut Creek Trail

Park and Trail
Development were
on the top of the
CIP List

Southern Walnut
Creek Trail

Google map:
<https://drive.google.com/open?id=14XzykdCBRAjMxOo8IcUCAcunAw&usp=sharing>



Proposed Red Bluff Nature Preserve



Value Proposition

- It's a 90 acres treasure for the entire east side
- The trail connects Hog Pen Neighborhood to a green space
- Connects to Southern Walnut Creek Trail

Proposed Morris Williams Trail (Phase I)

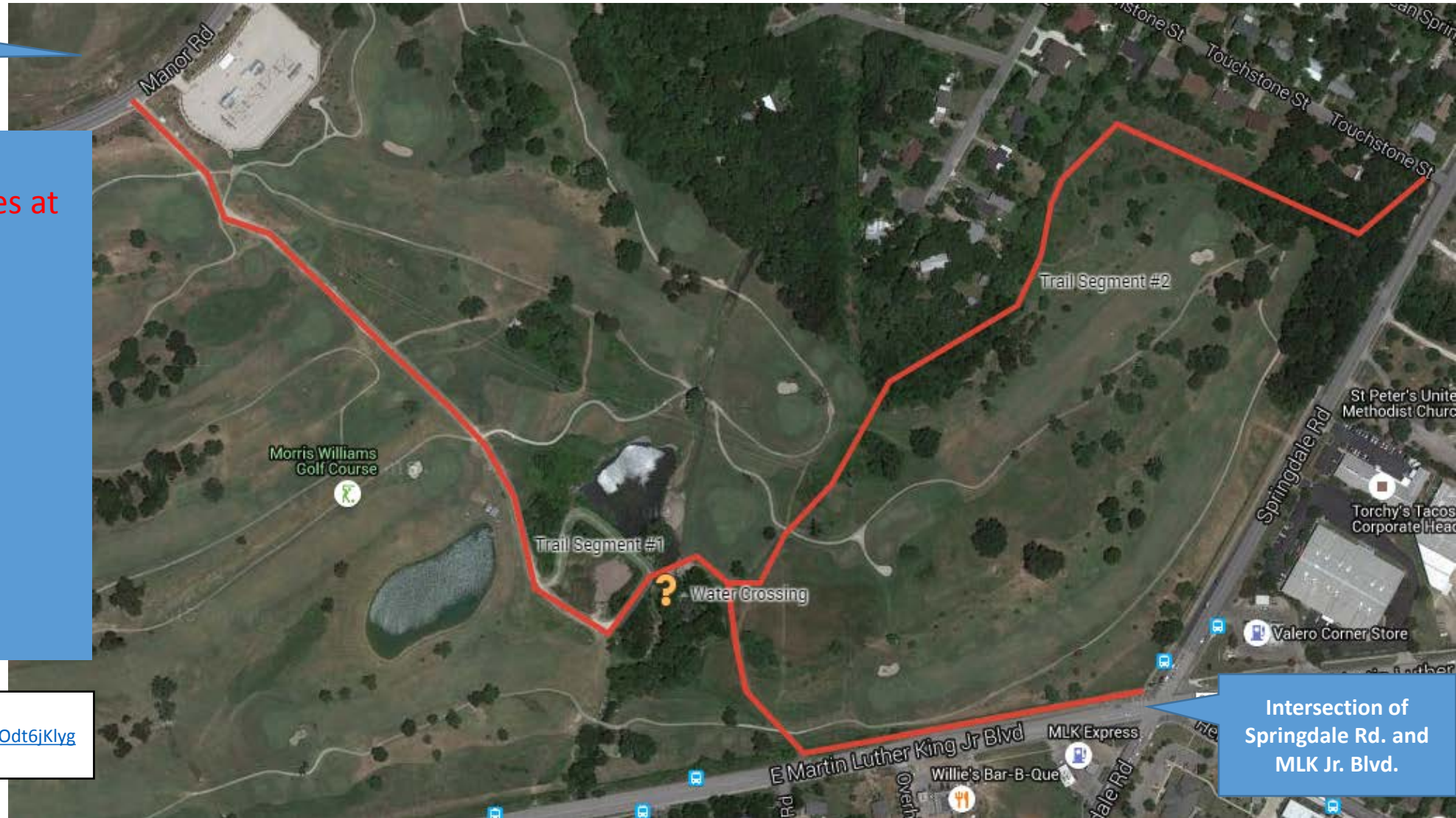
Mueller
Neighborhood

Connects several Distinct
Neighborhoods to amenities at
Mueller

- Marlo Heights East
- Creekwood
- Springdale Hills
- MLK BLVD – Route 183
- Givens Park
- Mueller
- Martin Luther King
- Ebony Acres
- Others too

Google map:

<https://www.google.com/maps/d/edit?mid=z900dt6jKlyg.kn-j9SU53T7o&usp=sharing>



Intersection of
Springdale Rd. and
MLK Jr. Blvd.

Requests

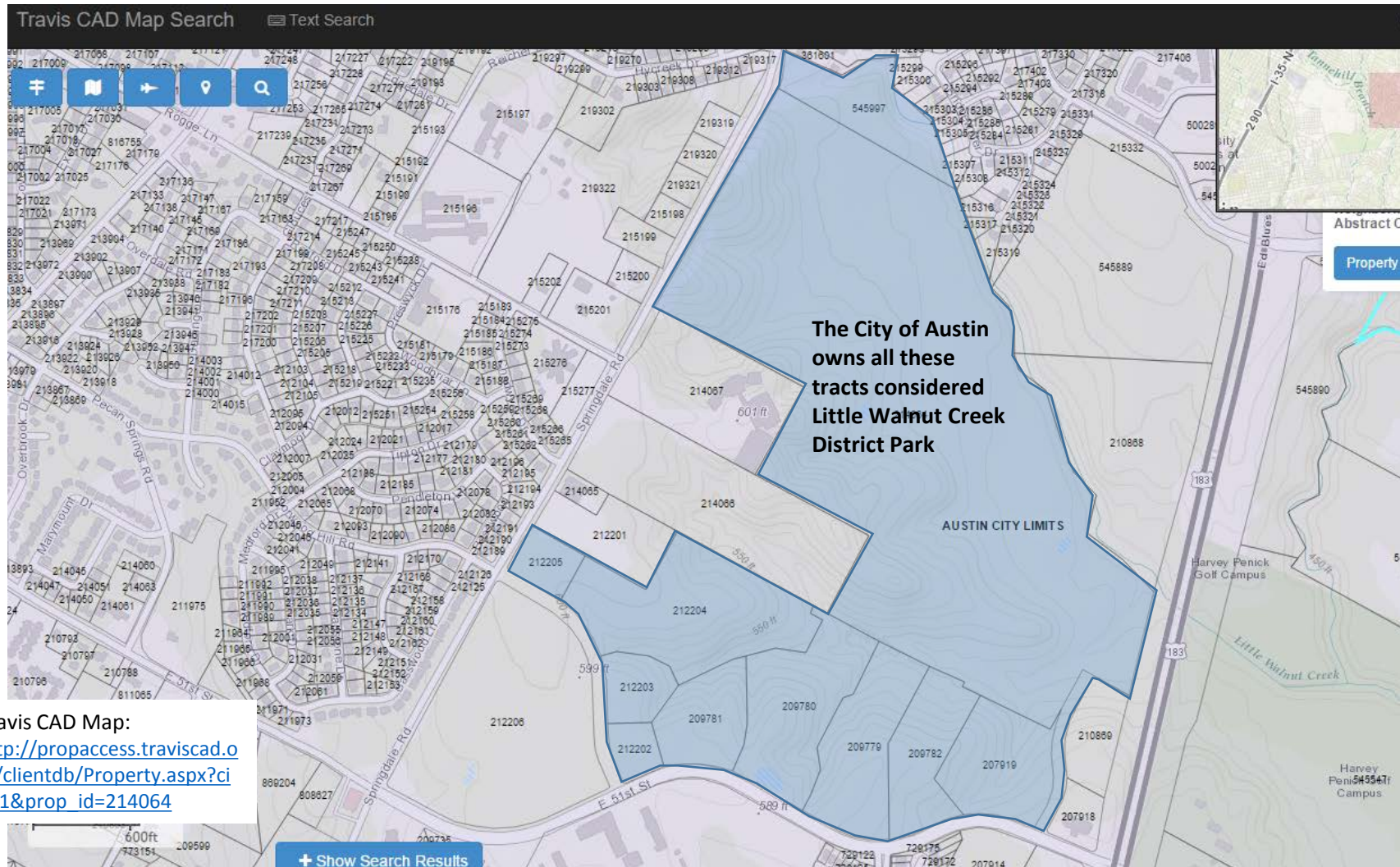
- A comprehensive EMLK Hike and Bike Connectivity Plan through partnership between city and citizens.
- Work with Morris Williams Golf Course to create the intended path (
- Identify time-line and resources to complete planning and execution
- Understand a basic “Equity” measurement base-line - Intended value vs. Actual value

Little Walnut Creek District Park Details

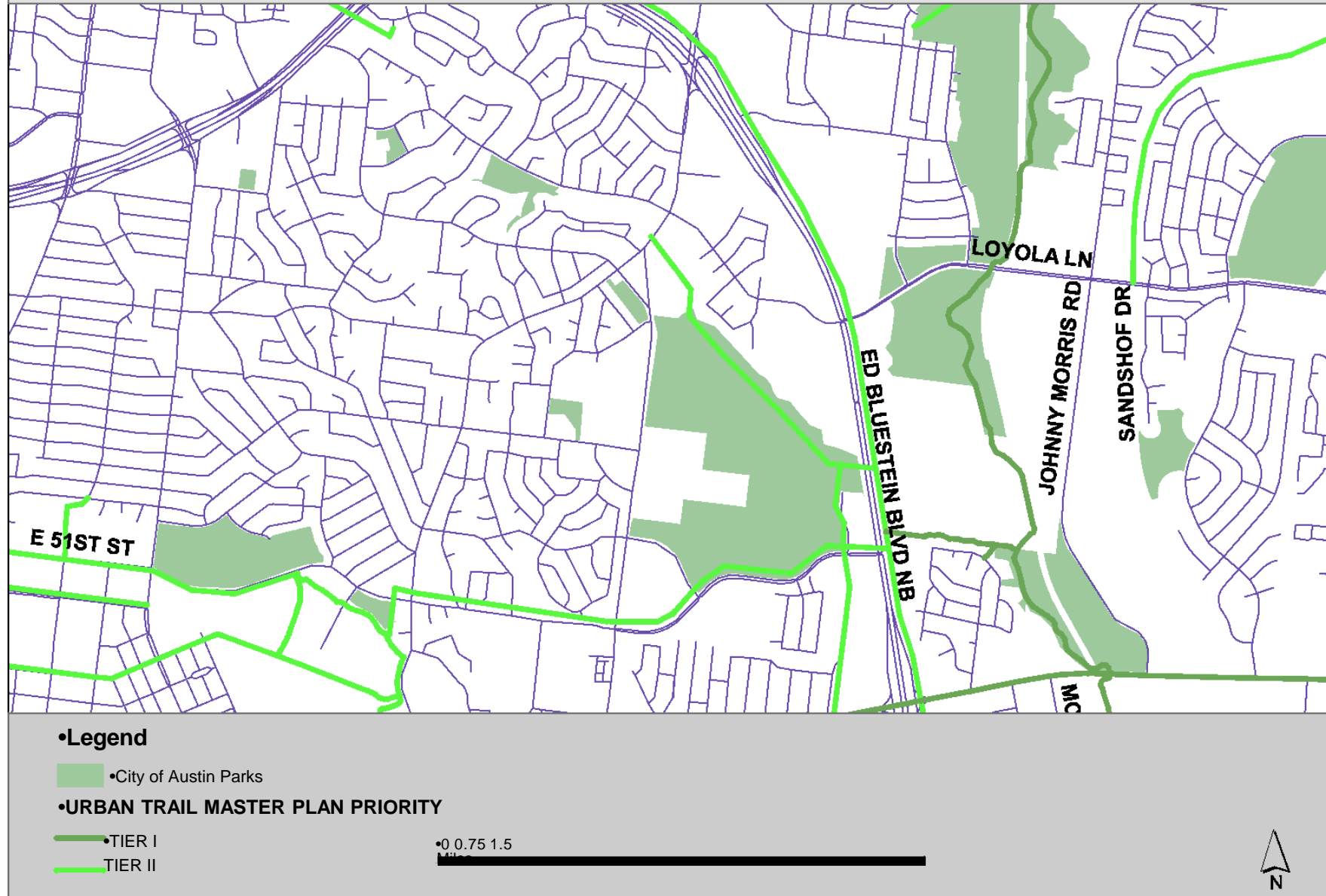
All this Proposed Little Walnut Creek District Park trail needs

- Designated entrances at north (partially exists now) and south with 10-15 parking spaces
- Trailhead signage
- Picnic tables
- Trash cans
- Gate to access the utility easement

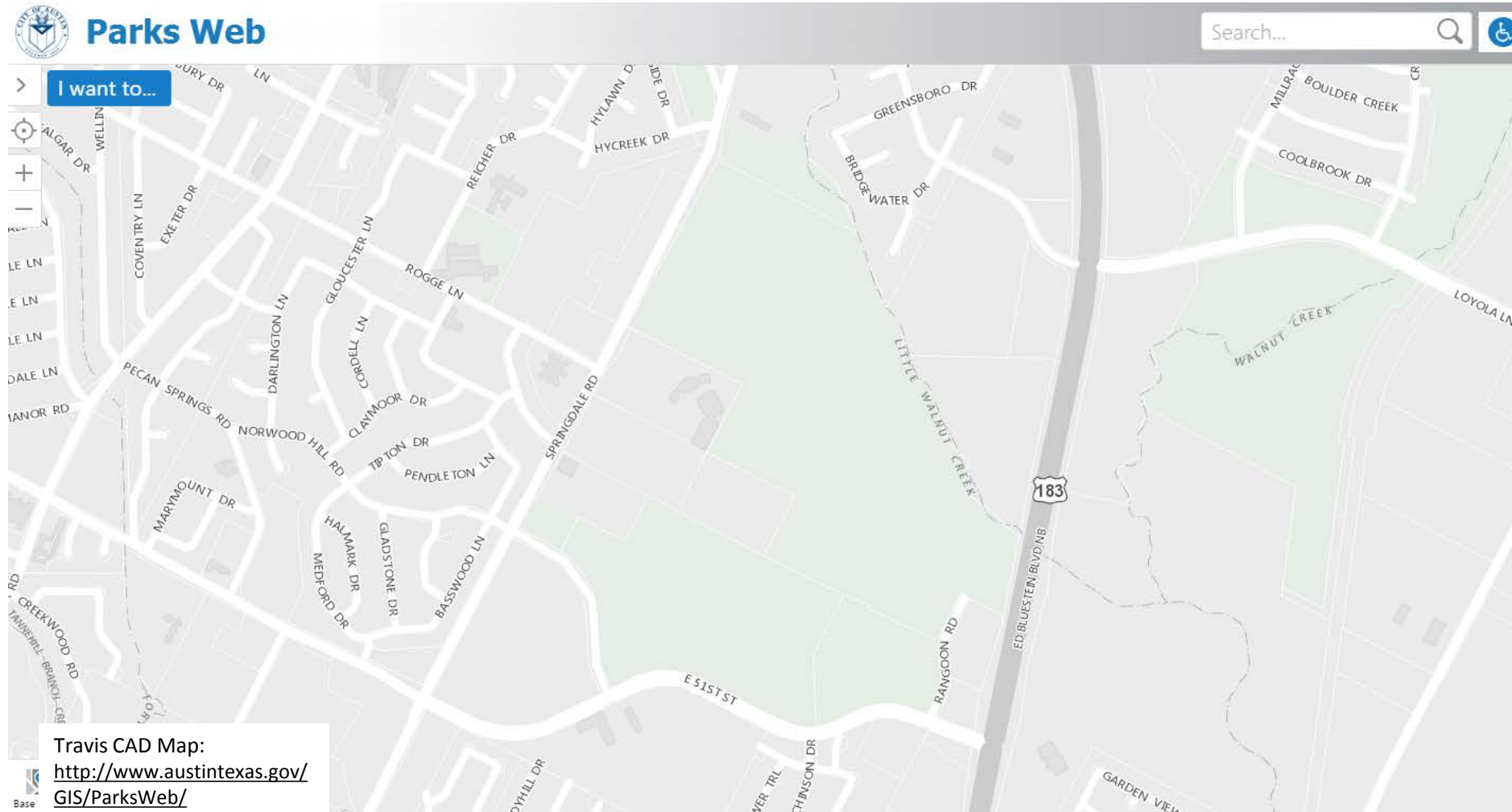
Proposed Little Walnut Creek District Park trail Owned by the City of Austin



•URBAN TRAIL MASTER PLAN - TIER I AND TIER II



Proposed Little Walnut Creek District Park trail seen on Parks Web

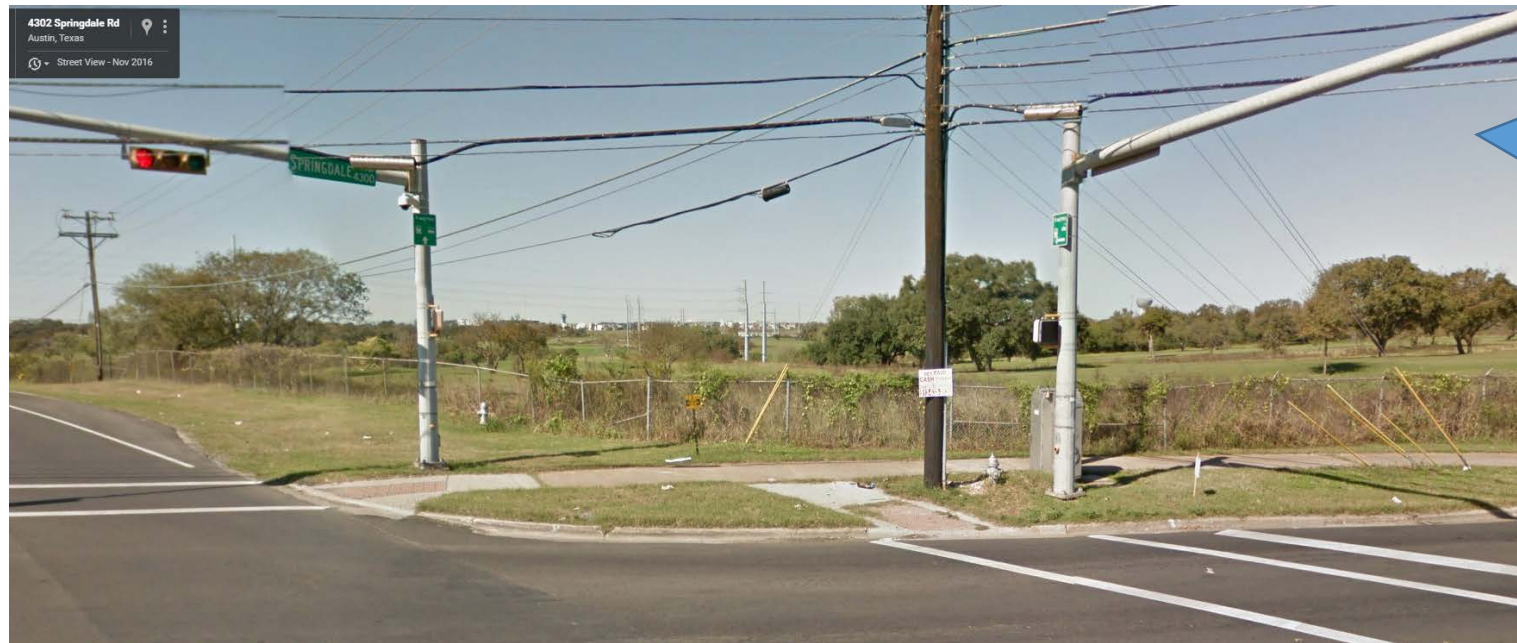


Morris Williams Golf Course Details

**MLK Jr.
Blvd.**

Vs.

**Manor
Road**



Intersection of
Springdale Rd. and MLK
Jr.. Blvd

- Dilapidated fence
- Was Overgrown
- Had Barbed Wire



Directly across from the
Mueller Neighborhood
on Manor Rd.

- No barrier
- Better maintained
- Tree lined

Aligns with East MLK Combined Neighborhood Plan Goals

East MLK Combined Neighborhood Plan Goals

- | | |
|---|---|
| 07. Create a transportation network that allows all residents to travel safely throughout the neighborhood by improving safety on major arterials and neighborhood streets. | • Public Safety |
| 08. Provide access to, from, and through the neighborhood for all residents by promoting a neighborhood-friendly system of transportation. | • Connectivity; • Traffic; • Transit |
| 09. Improve bicycle and pedestrian traffic safety on neighborhood streets. | • Public Safety; • Complete Streets |
| 13. Create more public open space, including parks and green spaces, improve existing parks and increase recreational amenities in the neighborhood. | • Create Additional Public/ Green Spaces |

Aligns with Pecan Springs/Springdale Hills Neighborhood Association (PSSNA) Goals

Pecan Springs ♦ Springdale Hills
NEIGHBORHOOD ASSOCIATION
"Showing We Care"

February 23, 2010

Austin City Council
City Hall
301 W 2nd Street
Austin, TX 78701

Dear Mayor and Council Members,

In January, the Pecan Springs/Springdale Hills Neighborhood Association submitted a letter expressing our concern and objection to the placement of an Austin Energy substation on the Morris Williams golf course. Since that time we have had an opportunity to meet with various parties involved in the project and to consider the plan more thoroughly. While it remains our belief that the substation would ideally be located within the Mueller Development, we now believe the placement of the substation on the golf course represents the best current option and wish to withdraw our previous objections.

During our meetings a number of assurances were made that allowed us to reverse our initial position and it is our hope the City Council and Austin Energy will formally commit to these assurances. They include:

- Neighborhood input on the design and aesthetics of the substation and its surrounding landscape.
- A pledge that the monies contributed by Austin Energy to Parks and Recreation Department will be used solely for the renovation of Morris Williams golf course.
- With increased responsiveness by the golf course to neighborhood concerns.
- A pledge that additional sources of monies will be sought, so that Morris Williams receives the entire \$4 million dollars that it needs for the renovations, so that work can begin sooner, rather than later.
- Enhancement of the Pecan Springs neighborhood's green space. Specifically with the development of a multi-use park on the Springdale property (currently planned as the Raul Alvarez disc golf course) as well as increased connectivity to the green space in and around Mueller and Bartholomew Park.
- Development of a safe pedestrian crossing on Manor Road that links to the Mueller development. Additionally, we would hope the Council would consider sidewalks along the south side of Manor to further increase safety for people attempting to access the Mueller green space.

P.O. Box 14206 * Austin, TX 78761 * (512) 461-8563 * pssnapresident@yahoo.com

Pecan Springs ♦ Springdale Hills
NEIGHBORHOOD ASSOCIATION
"Showing We Care"

We appreciate your consideration on these issues and look forward to working together as this project moves forward.

Sincerely,

DeWayne Lofton
President/Pecan Springs & Springdale Hills Neighborhood Association

Cc: Sonny Poole, Austin Energy

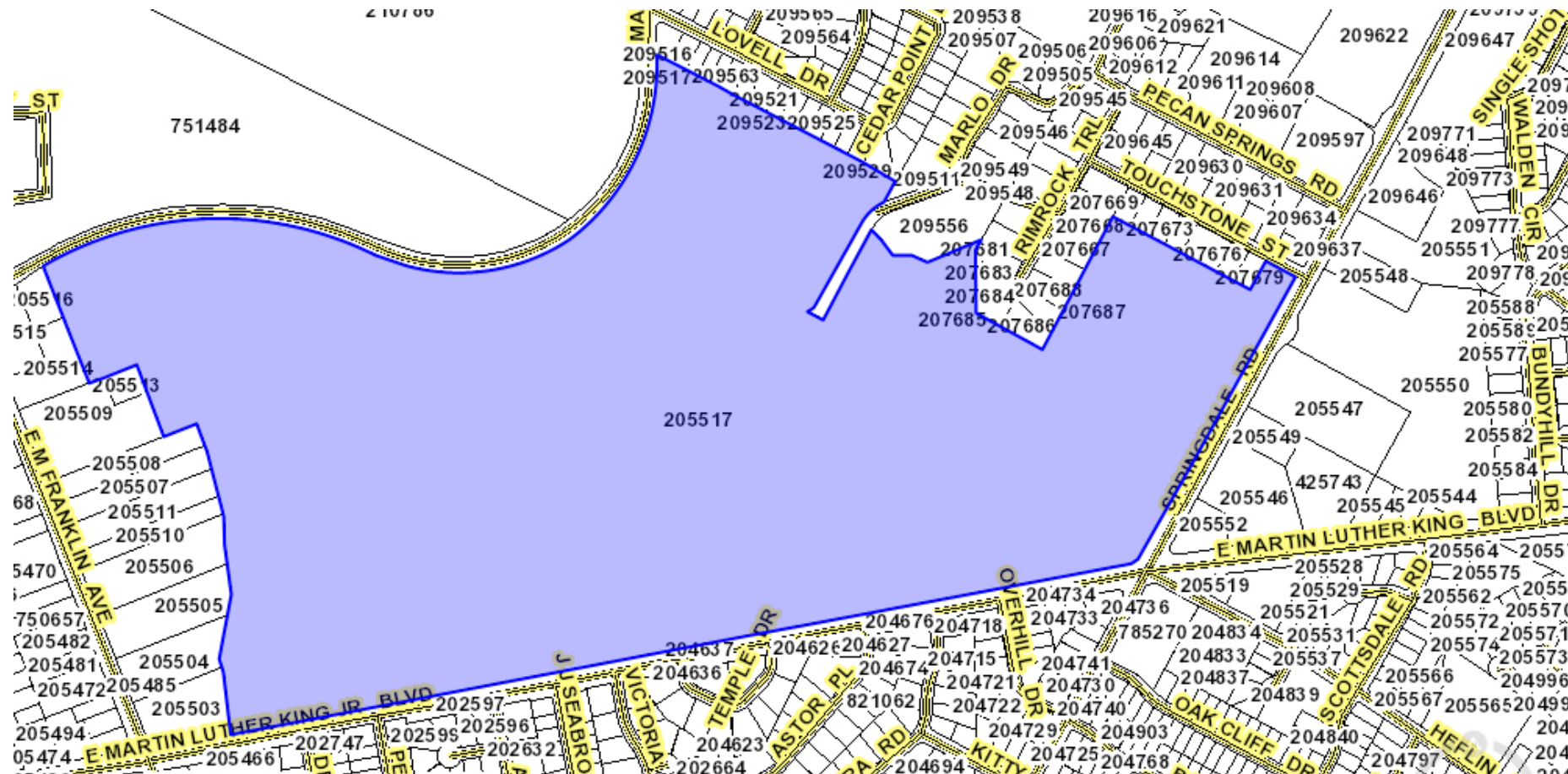
- Enhancement of the Pecan Springs neighborhood's green space. Specifically with the development of a multi-use park on the Springdale property (currently planned as the Raul Alvarez disc golf course) as well as increased connectivity to the green space in and around Mueller and Bartholomew Park.
- Development of a safe pedestrian crossing on Manor Road that links to the Mueller development. Additionally, we would hope the Council would consider sidewalks along the south side of Manor to further increase safety for people attempting to access the Mueller green space.



Aligns with Mueller Development Plan Goals

- “Compatibility with Surrounding Neighborhoods: Development must maintain and enhance the quality of life in adjacent neighborhoods, providing complementary linkages, land uses and transportation patterns.”
- <http://www.muelleraustin.com/plan/>

Proposed Morris Williams trail Owned by the City of Austin



The precedent has been set at Hancock Golf Course



An extension of Mueller's Path's connecting to the surrounding communities



Conditions of the Parks Department

1. The trail needs to be a firm, formal surface, not a nature or gravel trail
2. It needs to be ADA compliant
3. Given its condition, the low water crossing would need to be rebuilt or a new crossing would need to be provided.
4. Signage is a required item. Language about entering an active golf course, stay on the trail, curfew hours etc.
5. A split rail fence will be required along one side of the trail in a section near the water crossing to discourage cutting across the course
6. Part of the trail is proposed within an Electric and Water or Wastewater Easement. The easements may need to be amended to add the trail or if the Departments are agreeable MOU's will be required.
7. The Parks Department will have maintenance responsibility for the trail, fence, and signage.

Morris William Golf Course Path

4/20/2016

Example

| Quantity | Units | Unit Price | Item Description | Cost Estimate | Responsible Party |
|----------|-------|------------|-------------------------|---------------|-------------------|
| 16 | Each | \$120 | Fruit/nut tree saplings | \$1,920 | City of Austin |

Project Costs

Construction

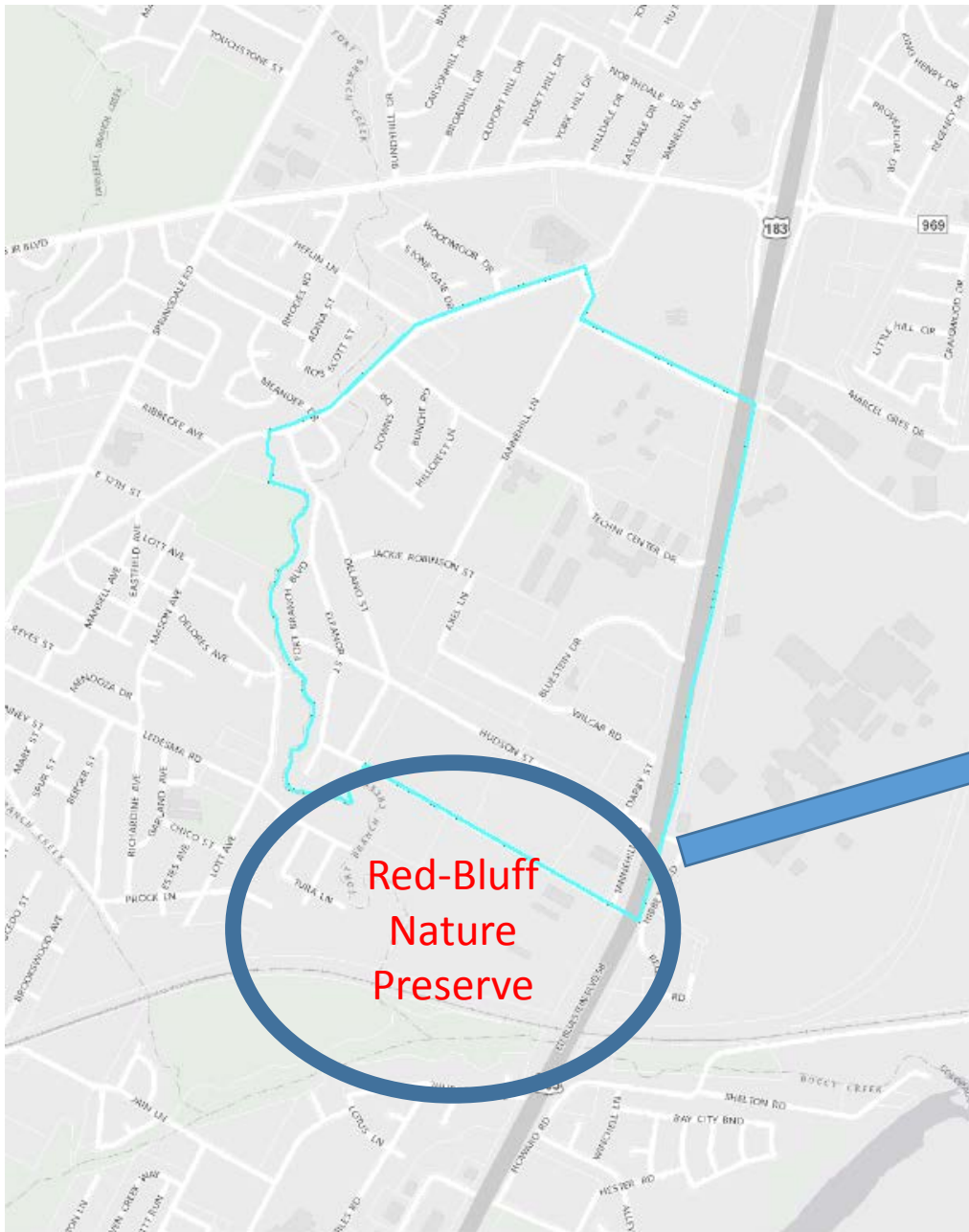
| Quantity | Units | Unit Price | Item Description | Cost Estimate | Responsible Party |
|----------|-------|-------------|--|---------------|-------------------|
| 27,000 | SF | \$18 | Concrete Sidewalk (10' for 2700 lf) (within the park) | \$486,000 | |
| 27,000 | SF | \$6 | Crushed Granite Path (10' for 2700 lf) | \$162,000 | |
| 1 | LS | \$1,000,000 | 60 foot span bridge over creek (includes engineering, permitting, inspection, project management and soft costs) | \$1,000,000 | |
| 5,000 | SF | \$30 | Sidewalk on MLK, Jr. Drive from Springdale Drive to path entrance. | \$150,000 | |
| | | | | \$0 | |
| | | | | \$0 | |
| | | | | \$0 | |

Contingency

| Quantity | Units | Unit Price | Item Description | Cost Estimate | Responsible Party |
|----------|-------|-------------|---|---------------|--------------------|
| 0.3 | LS | \$1,798,000 | 30% Contingency - Applies to all City of Austin Project Costs | \$539,400 | City of Austin |
| | | | | \$ 1,798,000 | Construction |
| | | | | \$ 539,400 | Contingency |
| | | | | \$ 2,337,400 | Project Total Cost |

Red Bluff Nature Reserve Details

Hog Pen Neighborhood and Red-Bluff Nature Preserve



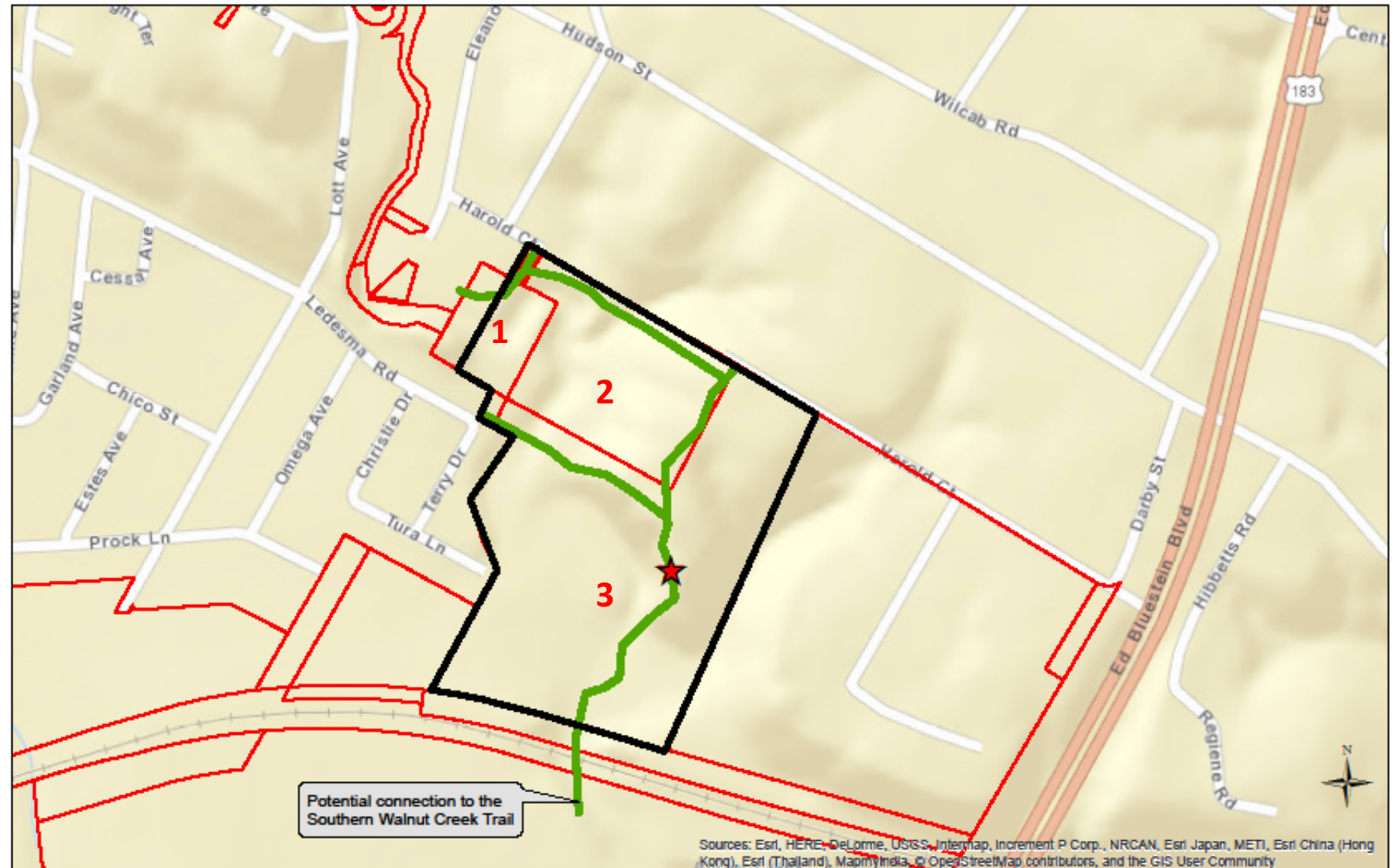
Land Parcels and Proposed Trails

Ownership

1. Watershed
2. Water Utilities
3. Public Works

Proposed Ownership

1. PARD (area inside black perimeter)



**Red Bluff Nature Preserve
Proposed Boundary and Trails**

- ★ Red Bluff View Point
- Proposed Trails
- Proposed Nature Preserve Boundary
- City of Austin Parcel Boundary

Thanks Charlie Duncan

Proposed Hike and Bike Trail Through Red Bluff Nature Preserve



Hog Penn
Neighborhood

Proposed Red
Bluff Nature
Preserve

Formally Connects
Neighborhood to the
Southern Walnut Creek Trail

Southern Walnut
Creek Trail

La Loma Connectivity Project

